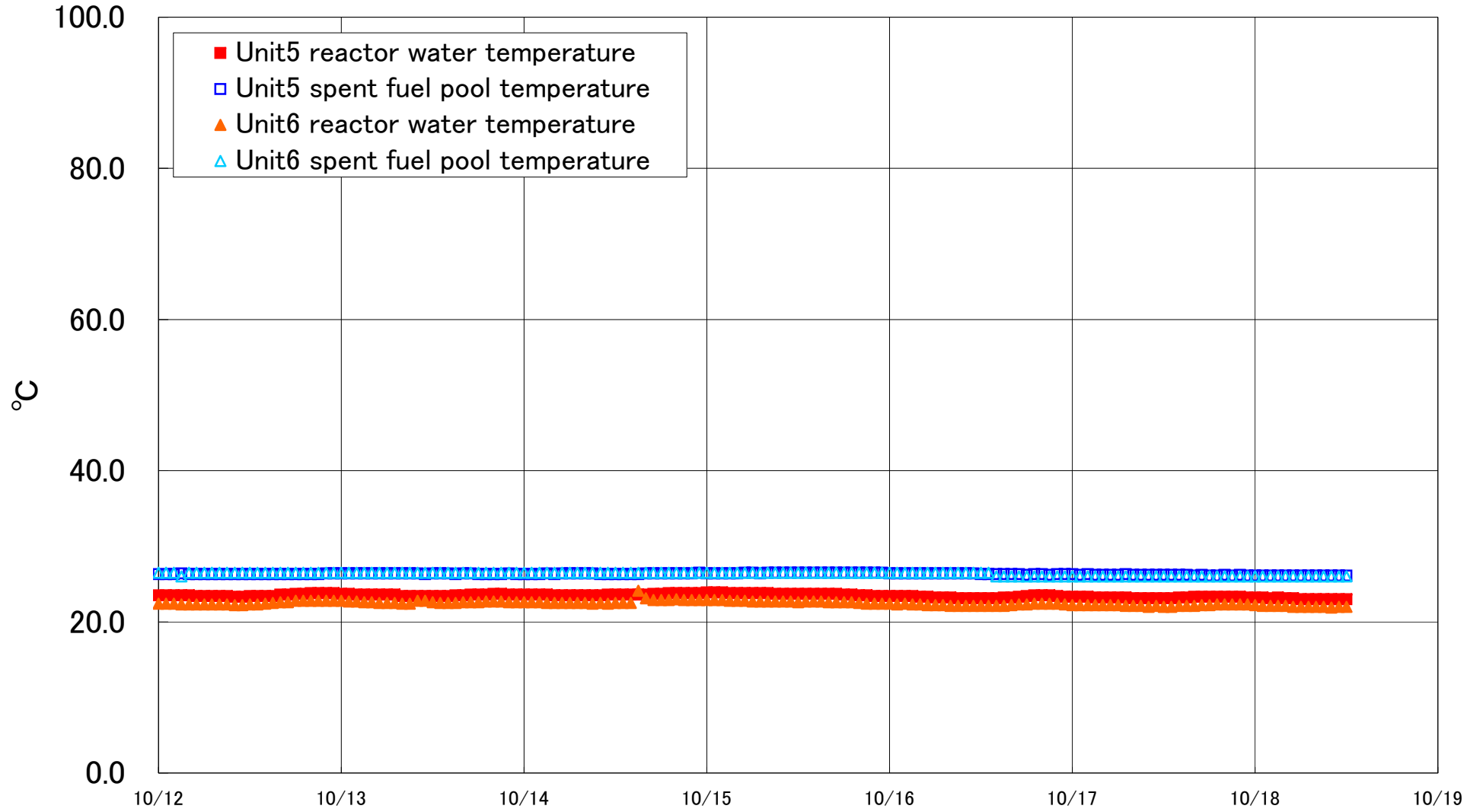


Fukushima Daiichi Nuclear Power Station Units 5·6 Reactor water /spent fuel pool temperature



Fukushima Daiichi Nuclear Power Station Unit5·6 Reactor water/spent fuel pool temperature

Date	Unit5 reactor water temperature	Unit5 spent fuel pool temperature	Unit6 reactor water temperature	Unit6 spent fuel pool temperature
10/15 20:00	23.5	26.5	22.5	26.5
10/15 21:00	23.5	26.5	22.4	26.5
10/15 22:00	23.4	26.5	22.4	26.5
10/15 23:00	23.4	26.5	22.4	26.5
10/16 0:00	23.4	26.4	22.4	26.5
10/16 1:00	23.4	26.4	22.3	26.5
10/16 2:00	23.4	26.4	22.4	26.5
10/16 3:00	23.4	26.4	22.3	26.5
10/16 4:00	23.3	26.4	22.3	26.5
10/16 5:00	23.3	26.4	22.2	26.5
10/16 6:00	23.2	26.4	22.2	26.5
10/16 7:00	23.2	26.4	22.2	26.5
10/16 8:00	23.2	26.4	22.1	26.5
10/16 9:00	23.1	26.4	22.1	26.5
10/16 10:00	23.1	26.4	22.1	26.5
10/16 11:00	23.1	26.4	22.1	26.5
10/16 12:00	23.1	26.3	22.1	26.5
10/16 13:00	23.1	26.3	22.1	26.5
10/16 14:00	23.1	26.3	22.1	26.0
10/16 15:00	23.2	26.3	22.1	26.0
10/16 16:00	23.2	26.3	22.2	26.0
10/16 17:00	23.3	26.3	22.3	26.0
10/16 18:00	23.4	26.2	22.3	26.0
10/16 19:00	23.5	26.3	22.4	26.0
10/16 20:00	23.5	26.3	22.4	26.0
10/16 21:00	23.5	26.2	22.4	26.0
10/16 22:00	23.4	26.3	22.4	26.0
10/16 23:00	23.3	26.3	22.3	26.0
10/17 0:00	23.3	26.3	22.2	26.0
10/17 1:00	23.3	26.2	22.2	26.0
10/17 2:00	23.3	26.3	22.2	26.0
10/17 3:00	23.2	26.2	22.2	26.0
10/17 4:00	23.2	26.2	22.2	26.0
10/17 5:00	23.2	26.2	22.2	26.0
10/17 6:00	23.2	26.2	22.2	26.0
10/17 7:00	23.2	26.3	22.1	26.0
10/17 8:00	23.1	26.2	22.1	26.0
10/17 9:00	23.1	26.2	22.1	26.0
10/17 10:00	23.1	26.2	22.0	26.0
10/17 11:00	23.1	26.2	22.1	26.0
10/17 12:00	23.1	26.2	22.0	26.0
10/17 13:00	23.1	26.2	22.0	26.0
10/17 14:00	23.2	26.2	22.1	26.0
10/17 15:00	23.2	26.2	22.1	26.0
10/17 16:00	23.3	26.1	22.1	26.0
10/17 17:00	23.3	26.2	22.2	26.0
10/17 18:00	23.3	26.1	22.2	26.0
10/17 19:00	23.3	26.1	22.3	26.0
10/17 20:00	23.3	26.2	22.3	26.0
10/17 21:00	23.3	26.1	22.3	26.0
10/17 22:00	23.3	26.2	22.3	26.0
10/17 23:00	23.2	26.1	22.3	26.0
10/18 0:00	23.2	26.1	22.2	26.0
10/18 1:00	23.2	26.1	22.1	26.0
10/18 2:00	23.1	26.1	22.1	26.0
10/18 3:00	23.2	26.1	22.1	26.0
10/18 4:00	23.1	26.1	22.1	26.0
10/18 5:00	23.1	26.1	22.0	26.0
10/18 6:00	23.0	26.1	22.0	26.0
10/18 7:00	23.0	26.1	22.0	26.0
10/18 8:00	23.0	26.1	22.0	26.0
10/18 9:00	23.0	26.1	22.0	26.0
10/18 10:00	23.0	26.1	21.9	26.0
10/18 11:00	23.0	26.1	22.0	26.0
10/18 12:00	23.0	26.1	22.0	26.0