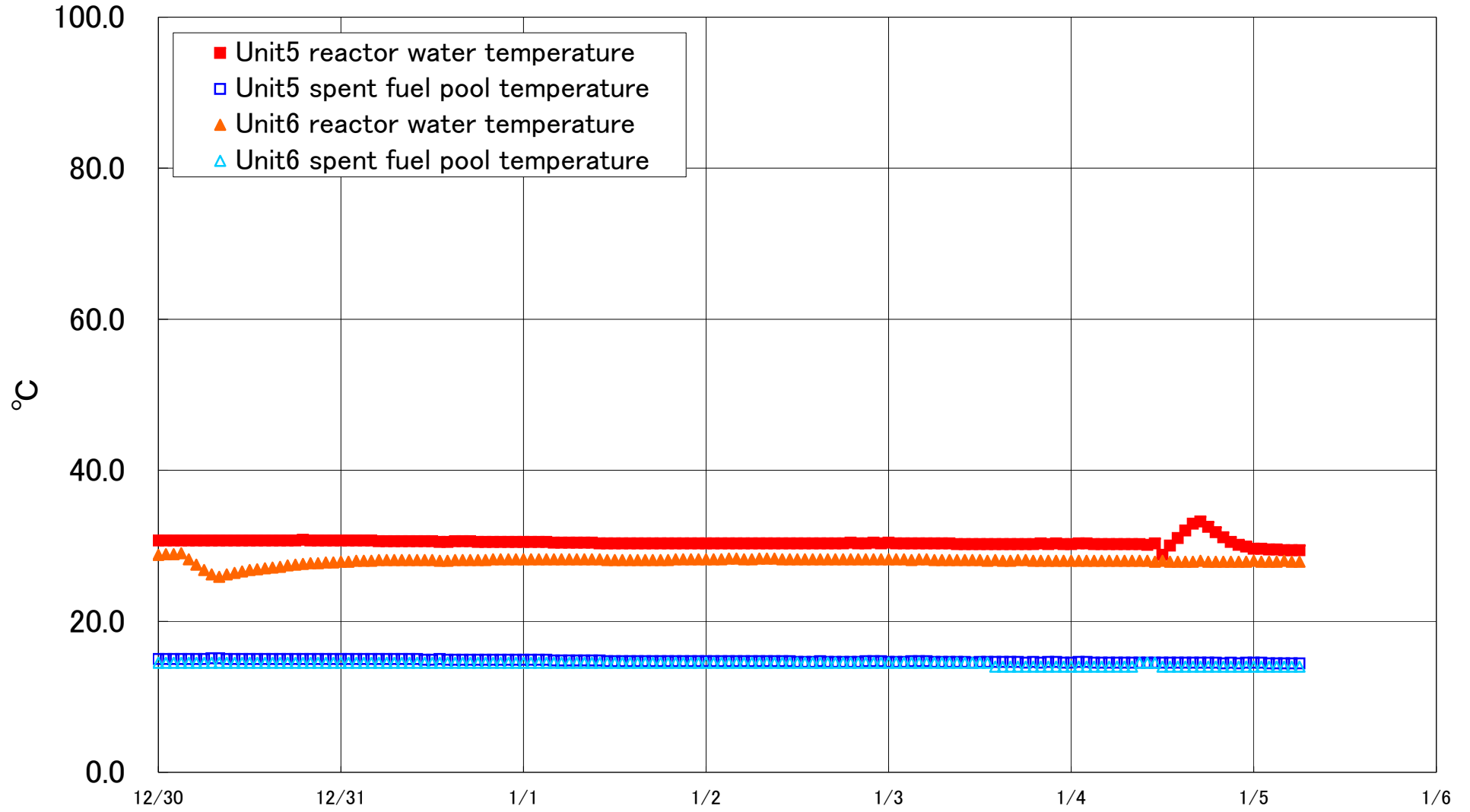


Fukushima Daiichi Nuclear Power Station Units 5·6 Reactor water /spent fuel pool temperature



Fukushima Daiichi Nuclear Power Station Unit5·6 Reactor water/spent fuel pool temperature

Date	Unit5 reactor water temperature	Unit5 spent fuel pool temperature	Unit6 reactor water temperature	Unit6 spent fuel pool temperature
1/2 14:00	30.3	14.6	28.2	14.5
1/2 15:00	30.3	14.7	28.2	14.5
1/2 16:00	30.3	14.6	28.2	14.5
1/2 17:00	30.3	14.6	28.2	14.5
1/2 18:00	30.3	14.6	28.2	14.5
1/2 19:00	30.4	14.6	28.2	14.5
1/2 20:00	30.3	14.6	28.2	14.5
1/2 21:00	30.3	14.7	28.2	14.5
1/2 22:00	30.4	14.7	28.2	14.5
1/2 23:00	30.3	14.7	28.2	14.5
1/3 0:00	30.4	14.6	28.2	14.5
1/3 1:00	30.3	14.6	28.2	14.5
1/3 2:00	30.3	14.6	28.2	14.5
1/3 3:00	30.3	14.7	28.1	14.5
1/3 4:00	30.3	14.7	28.2	14.5
1/3 5:00	30.3	14.7	28.2	14.5
1/3 6:00	30.3	14.6	28.1	14.5
1/3 7:00	30.3	14.6	28.1	14.5
1/3 8:00	30.3	14.6	28.1	14.5
1/3 9:00	30.2	14.6	28.1	14.5
1/3 10:00	30.2	14.6	28.1	14.5
1/3 11:00	30.2	14.5	28.1	14.5
1/3 12:00	30.2	14.6	28.1	14.5
1/3 13:00	30.2	14.6	28.0	14.5
1/3 14:00	30.2	14.6	28.1	14.0
1/3 15:00	30.2	14.6	28.0	14.0
1/3 16:00	30.2	14.6	28.0	14.0
1/3 17:00	30.2	14.6	28.1	14.0
1/3 18:00	30.2	14.5	28.1	14.0
1/3 19:00	30.2	14.6	28.0	14.0
1/3 20:00	30.3	14.5	28.0	14.0
1/3 21:00	30.2	14.6	28.0	14.0
1/3 22:00	30.3	14.6	28.0	14.0
1/3 23:00	30.2	14.5	28.0	14.0
1/4 0:00	30.2	14.5	28.0	14.0
1/4 1:00	30.3	14.6	28.0	14.0
1/4 2:00	30.3	14.6	28.0	14.0
1/4 3:00	30.2	14.5	28.0	14.0
1/4 4:00	30.2	14.5	28.0	14.0
1/4 5:00	30.2	14.5	28.0	14.0
1/4 6:00	30.2	14.5	28.0	14.0
1/4 7:00	30.2	14.5	28.0	14.0
1/4 8:00	30.2	14.5	28.0	14.0
1/4 9:00	30.2	14.5	28.0	14.5
1/4 10:00	30.1	14.5	28.0	14.5
1/4 11:00	30.3	14.5	27.9	14.5
1/4 12:00	28.8	14.5	28.0	14.0
1/4 13:00	30.0	14.5	27.9	14.0
1/4 14:00	31.0	14.5	27.9	14.0
1/4 15:00	32.0	14.5	27.9	14.0
1/4 16:00	32.9	14.5	27.9	14.0
1/4 17:00	33.2	14.5	28.0	14.0
1/4 18:00	32.5	14.5	27.9	14.0
1/4 19:00	31.8	14.5	27.9	14.0
1/4 20:00	31.1	14.4	27.9	14.0
1/4 21:00	30.5	14.5	27.9	14.0
1/4 22:00	30.1	14.4	27.9	14.0
1/4 23:00	29.9	14.5	27.9	14.0
1/5 0:00	29.6	14.5	28.0	14.0
1/5 1:00	29.6	14.5	27.9	14.0
1/5 2:00	29.5	14.4	27.9	14.0
1/5 3:00	29.5	14.4	27.9	14.0
1/5 4:00	29.4	14.4	28.0	14.0
1/5 5:00	29.4	14.4	27.9	14.0
1/5 6:00	29.4	14.4	27.9	14.0