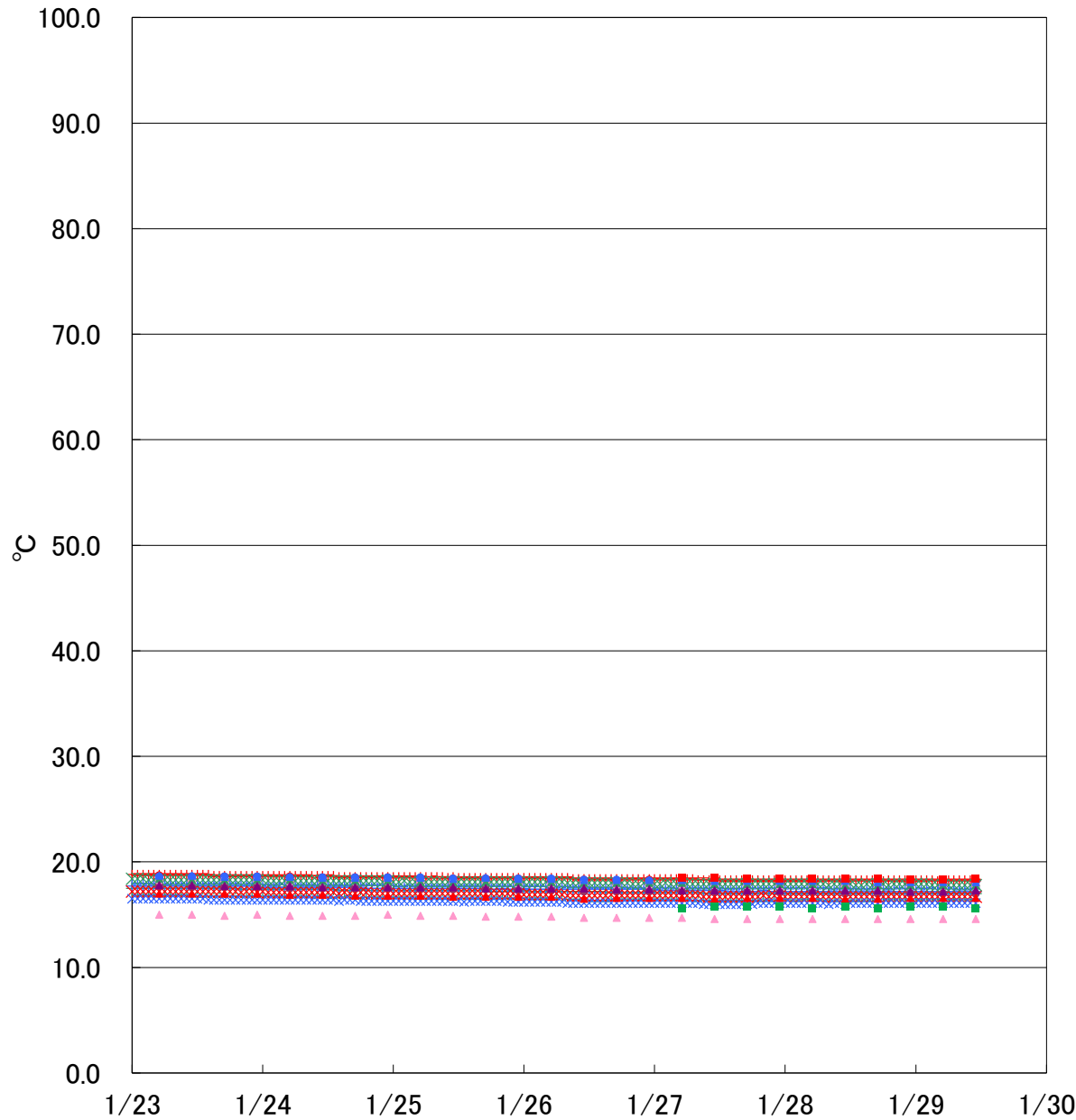


Fukushima Daiichi Nuclear Power Station Unit 3 Parameters of Temperature



- + VESSEL BOTTOM HEAD(TE-2-3-69L1)
- + VESSEL BOTTOM HEAD(TE-2-3-69L2)
- + VESSEL BOTTOM HEAD(TE-2-3-69L3)
- VESSEL BOTTOM ABOVE SKIRT JOT(TE-2-3-69F1)
- VESSEL BOTTOM ABOVE SKIRT JOT(TE-2-3-69F2)
- VESSEL BOTTOM ABOVE SKIRT JOT(TE-2-3-69F3)
- × VESSEL WALL ABOVE BOTTOM HEAD(TE-2-3-69H1)
- × VESSEL WALL ABOVE BOTTOM HEAD(TE-2-3-69H2)
- × VESSEL WALL ABOVE BOTTOM HEAD(TE-2-3-69H3)
- RETURN AIR DRYWELL COOLER(TE-16-114A)
- RETURN AIR DRYWELL COOLER(TE-16-114B)
- RETURN AIR DRYWELL COOLER(TE-16-114C)
- RETURN AIR DRYWELL COOLER(TE-16-114D)
- RETURN AIR DRYWELL COOLER(TE-16-114E)
- ▲ SUPPLY AIR D/W COOLER(TE-16-114F#1)
- ▲ SUPPLY AIR D/W COOLER(TE-16-114G#1)
- ▲ SUPPLY AIR D/W COOLER(TE-16-114H#1)
- ▲ SUPPLY AIR D/W COOLER(TE-16-114J#2)
- ▲ SUPPLY AIR D/W COOLER(TE-16-114K#1)
- PCV Temperature (TE-16-002)
- PCV Temperature (TE-16-004)

The temperatures measured at Unit 3 PCV thermometer (TE-16-002) and PCV thermometer (TE-16-004) were added to the graph because they were selected as the monitored thermometers.