

Sampling Results Regarding the Influence on the Water Leak at a Tank in the H6 Area in Fukushima Daiichi Nuclear Power Station (Around the H6 Area) Tokyo Electric Power Company

<Reference>
August 15, 2014

Unit: Bq/L

| | Groundwater around H6 area | | |
|------------------------|----------------------------|--------------|--------------|
| | G-1 | G-2 | G-3 |
| Date of Sampling | Aug 13, 2014 | Aug 13, 2014 | Aug 13, 2014 |
| Time of sampling | 8:45 AM | 8:55 AM | 8:35 AM |
| Gross β | ND(19) | 19 | 21 |
| H-3 (Approx. 12 years) | 190 | 1,800 | 740 |

* "ND" indicates that the measurement result is below the detection limit, and the detection limit of each nuclide is provided in parentheses.

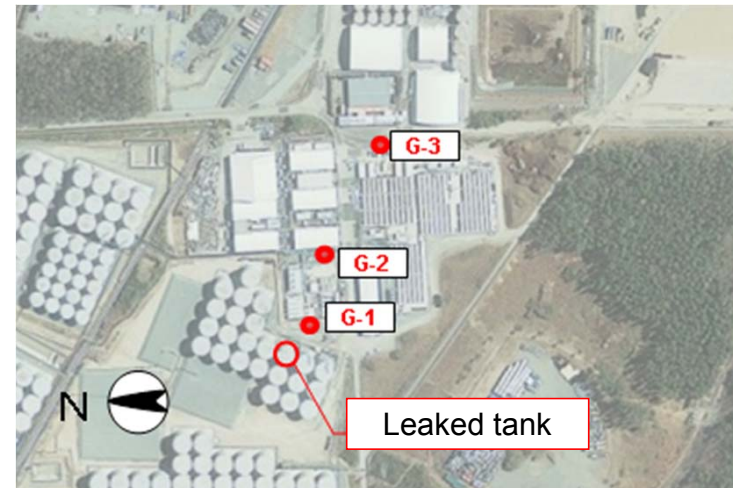


Photo offered by JAPAN SPACE IMAGING CORPORATION

<Reference> The Highest Dose Until the Previous Measurement

Unit: Bq/L

| | G-1 | G-2 | G-3 |
|------------------------|------------|--------------|--------------|
| Gross β | 54 <3/28> | 260 <6/10> | 46 <7/7> |
| H-3 (Approx. 12 years) | 480 <6/18> | 7,000 <3/24> | 2,600 <5/24> |

* The sampling date is provided in parentheses.