

Sampling Results Regarding the Influence on the Water Leak at a Tank in the H6 Area in Fukushima Daiichi Nuclear Power Station (Around the H6 Area) Tokyo Electric Power Company

<Reference>
August 26, 2014

Unit: Bq/L

	Groundwater around H6 area		
	G-1	G-2	G-3
Date of Sampling	/	Aug 24, 2014	Aug 24, 2014
Time of sampling		8:10 AM	8:17 AM
Gross β		32	24
H-3 (Approx. 12 years)		440	320

* "ND" indicates that the measurement result is below the detection limit, and the detection limit of each nuclide is provided in parentheses.

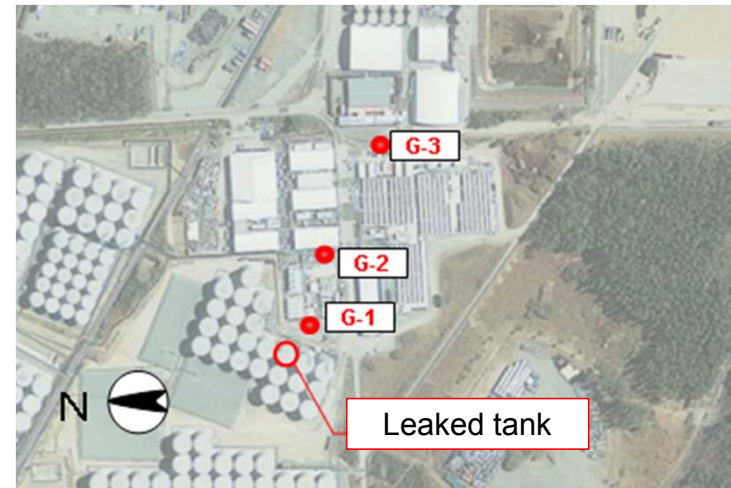


Photo offered by JAPAN SPACE IMAGING CORPORATION

<Reference> The Highest Dose Until the Previous Measurement

Unit: Bq/L

	G-1	G-2	G-3
Gross β	54 <3/28>	260 <6/10>	46 <7/7>
H-3 (Approx. 12 years)	480 <6/18>	7,000 <3/24>	2,600 <5/24>

* The sampling date is provided in parentheses.