

# Sampling Results Regarding the Water Leak at the Tanks in the H4 area in Fukushima Daiichi Nuclear Power Station (South Water Outlet, Drainage Channel)

<Reference>

July 4, 2014

Tokyo Electric Power Company

Unit: Bq/L

	Seawater of the south water outlet Note 1 (near the drainage channel exit) (T-2)	Drainage channel C OP.35 exit (C-2)	Point near the main gate in the drainage channel C Note 2 (C-0)	Point near Fureai Intersection in the drainage channel B Note 2 (B-0-1)
Date of Sampling	Jul 3, 2014	Jul 3, 2014		Jul 3, 2014
Time of sampling	8:00 AM	7:43 AM		7:30 AM
Cs-134(Approx. 2 years)	ND(1.1)	ND(17)		ND(18)
Cs-137(Approx.30 years)	ND(1.6)	ND(27)		ND(26)
Gross β	ND(22)	ND(16)		ND(16)

Unit: Bq/L

	Side ditch next to the tank (point immediately short of the junction with the drainage channel C) (X-1)
Date of Sampling	Jul 3, 2014
Time of sampling	7:33 AM
Cs-134(Approx. 2 years)	ND(18)
Cs-137(Approx.30 years)	30
Gross β	68

Note 1: Approx. 330m south from Unit 1-4 water outlet (T-2)

Note 2: Water inflow location of drainage channel to the tank area

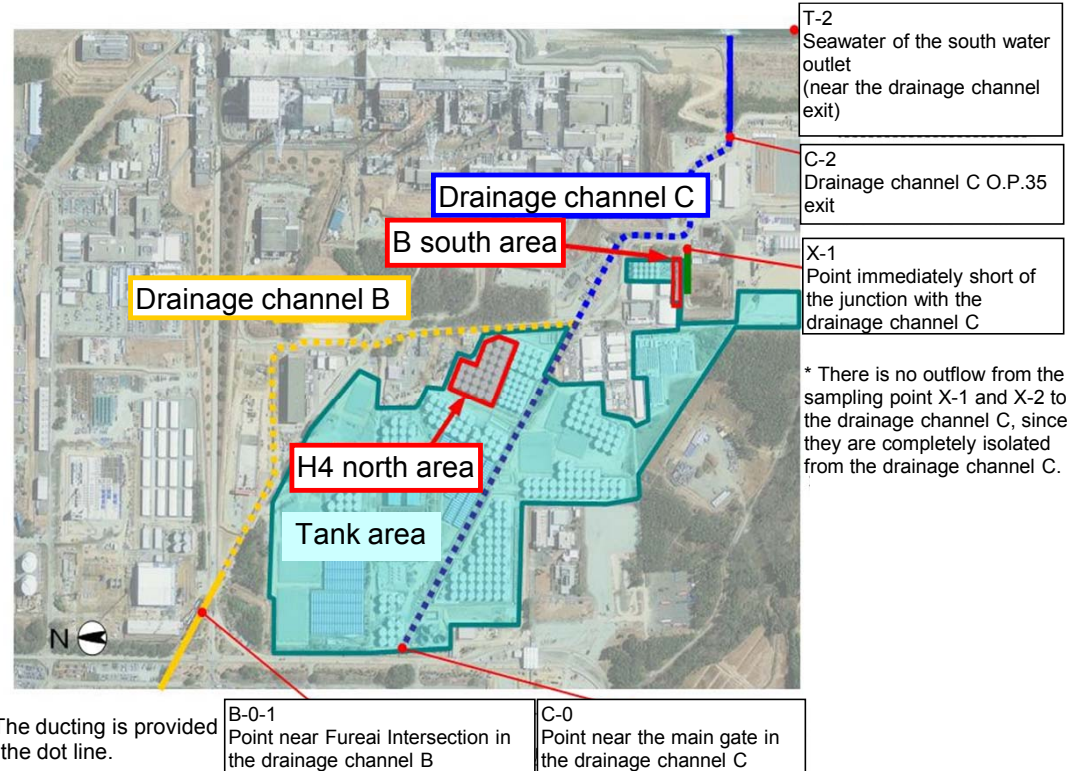
\* "ND" indicates that the measurement result is below the detection limit, and the detection limit of each nuclide is provided in parentheses.

<Reference> The Highest Dose Until the Previous Measurement

Unit: Bq/L

	Seawater of the south water outlet Note 1 (near the drainage channel exit) (T-2)	Drainage channel C OP.35 exit (C-2)	Point near the main gate in the drainage channel C Note 2 (C-0)
Cs-134(Approx. 2 years)	3.5 [11/9]	45 [9/26]	20 <2/15>
Cs-137(Approx.30 years)	8.1 [9/15,11/9]	130 [9/26]	51 <2/15>
Gross β	ND	2,500 [10/24]	120 <2/15>

	Point near Fureai Intersection in the drainage channel B Note 2 (B-0-1)	Side ditch next to the tank (point immediately short of the junction with the drainage channel C) (X-1)
Cs-134(Approx. 2 years)	110 <5/1>	450 [10/4]
Cs-137(Approx.30 years)	280 <5/1>	990 [10/4]
Gross β	380 [9/2]	15,000 [10/2]



\* The ducting is provided in the dot line.

\* Sampling date is provided in parentheses. [ ]: 2013, <>: 2014