

December 28, 2015
Tokyo Electric Power Company

Air Dose Rates inside the Buildings

Centralized Radioactive Waste
Treatment Facilities

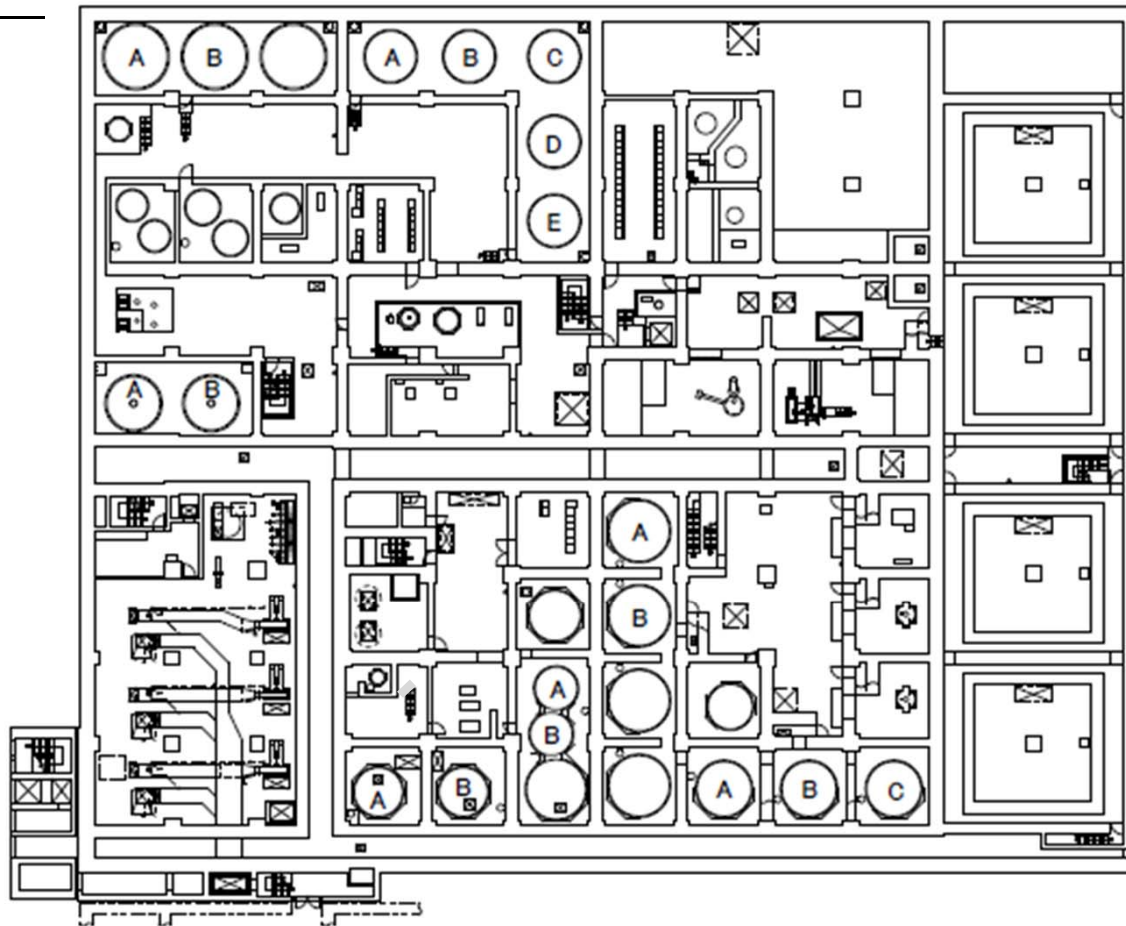
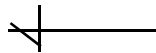
Sampling Period

- | | |
|---|--|
| · Process Main Building (PM) | : from October 1, 2015 to October 31, 2015 |
| · Incinerator and Machine Shop Building (MSW) | : from October 1, 2015 to October 31, 2015 |
| · High Temperature Incineration Building (HTI) | : from October 1, 2015 to October 31, 2015 |
| · Site Bunker Building (SB) | : from October 1, 2015 to October 31, 2015 |
| · Supression Pool Water Surge Tank Building (SPT) | : from October 1, 2015 to October 31, 2015 |
| · Spent Fuel Pool Building | : from October 1, 2015 to October 31, 2015 |

Fukushima Daiichi NPS

Process Main Building 1st Basement Floor

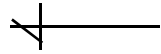
[mSv/h]



Fukushima Daiichi NPS

Process Main Building 1st Floor

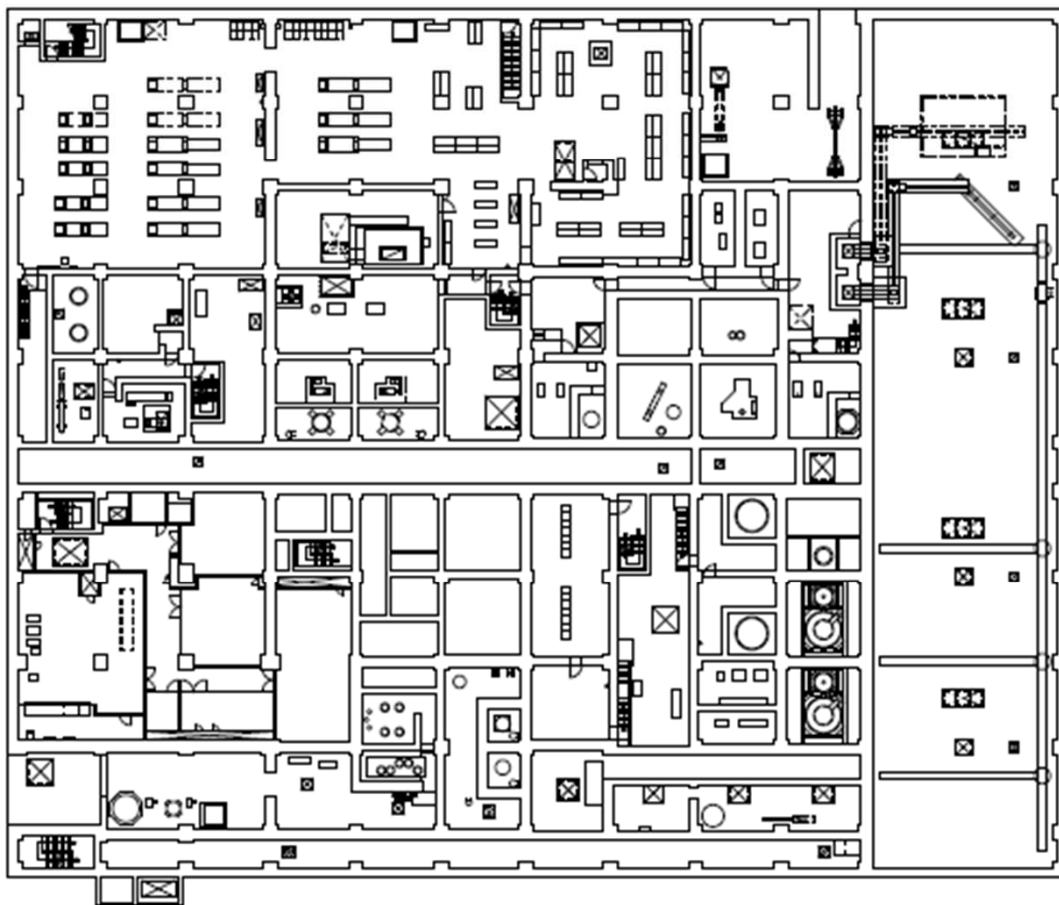
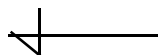
[mSv/h]

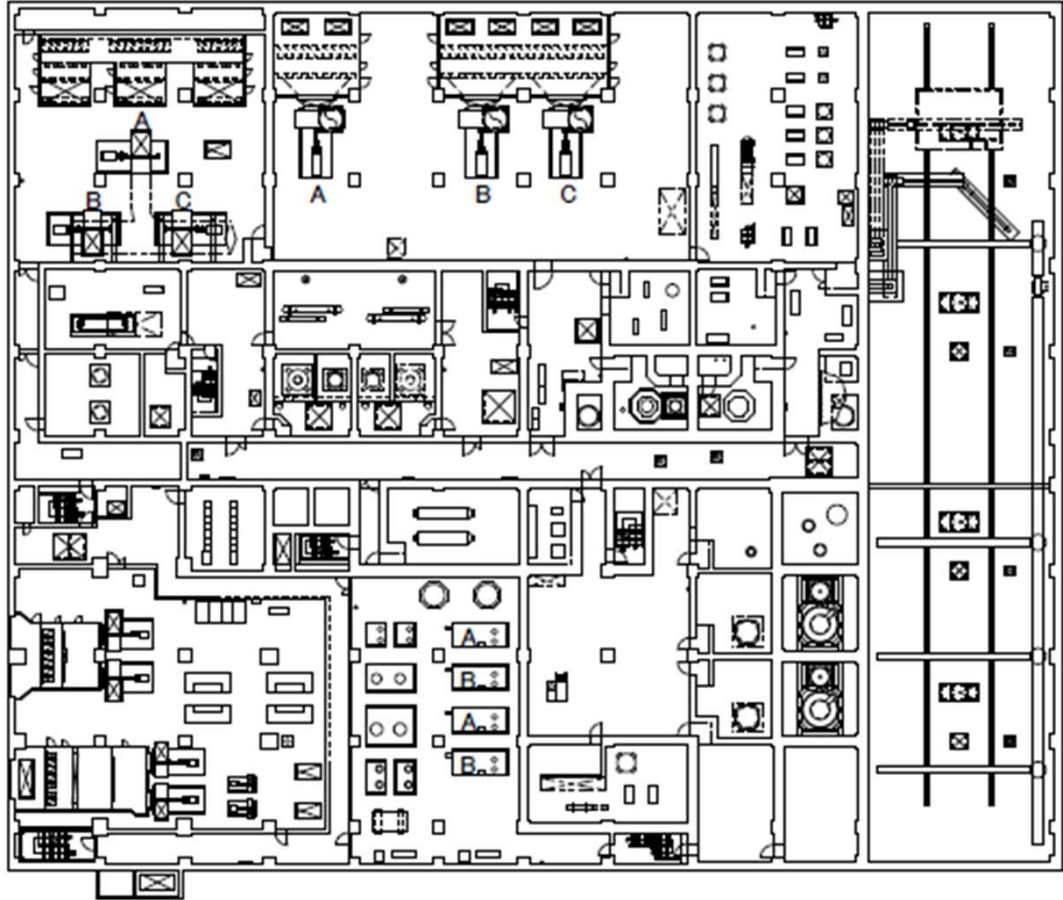
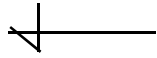


Fukushima Daiichi NPS

Process Main Building 2nd Floor

[mSv/h]

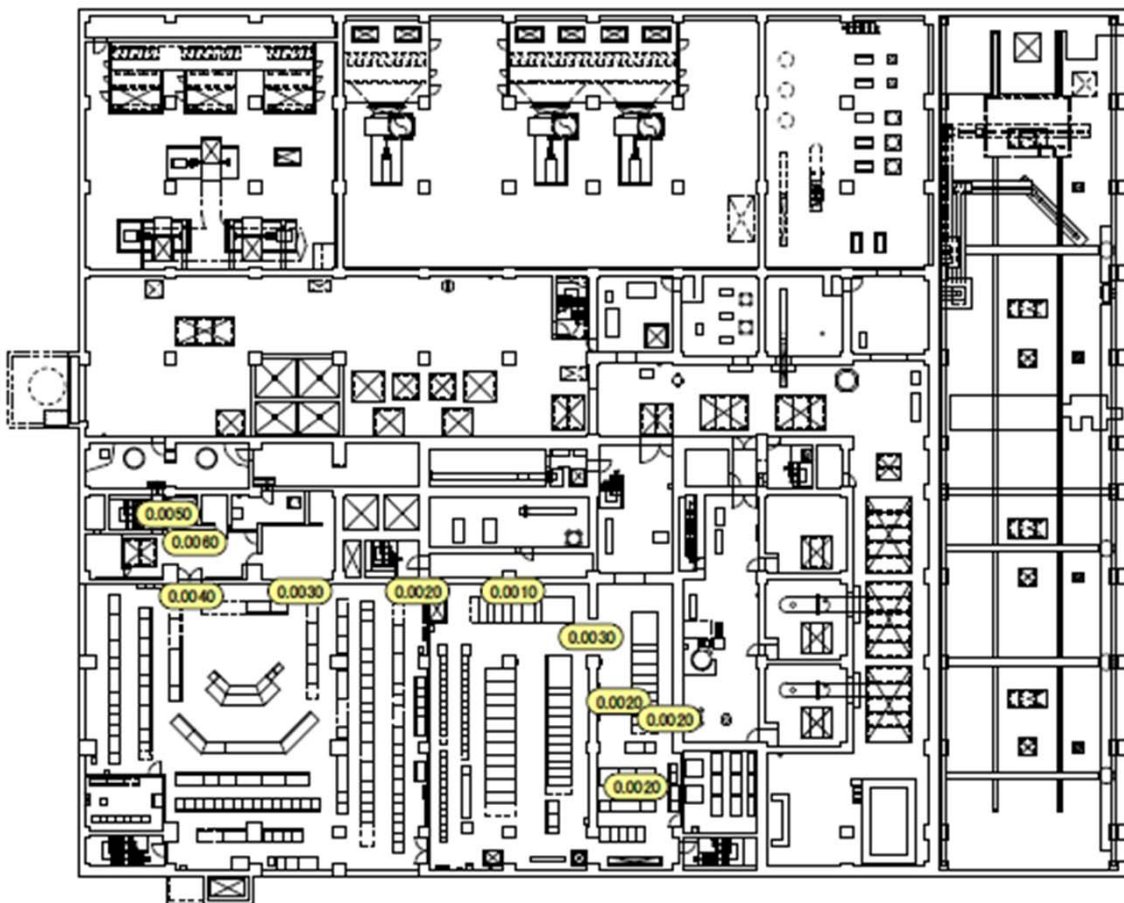
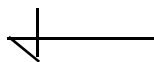




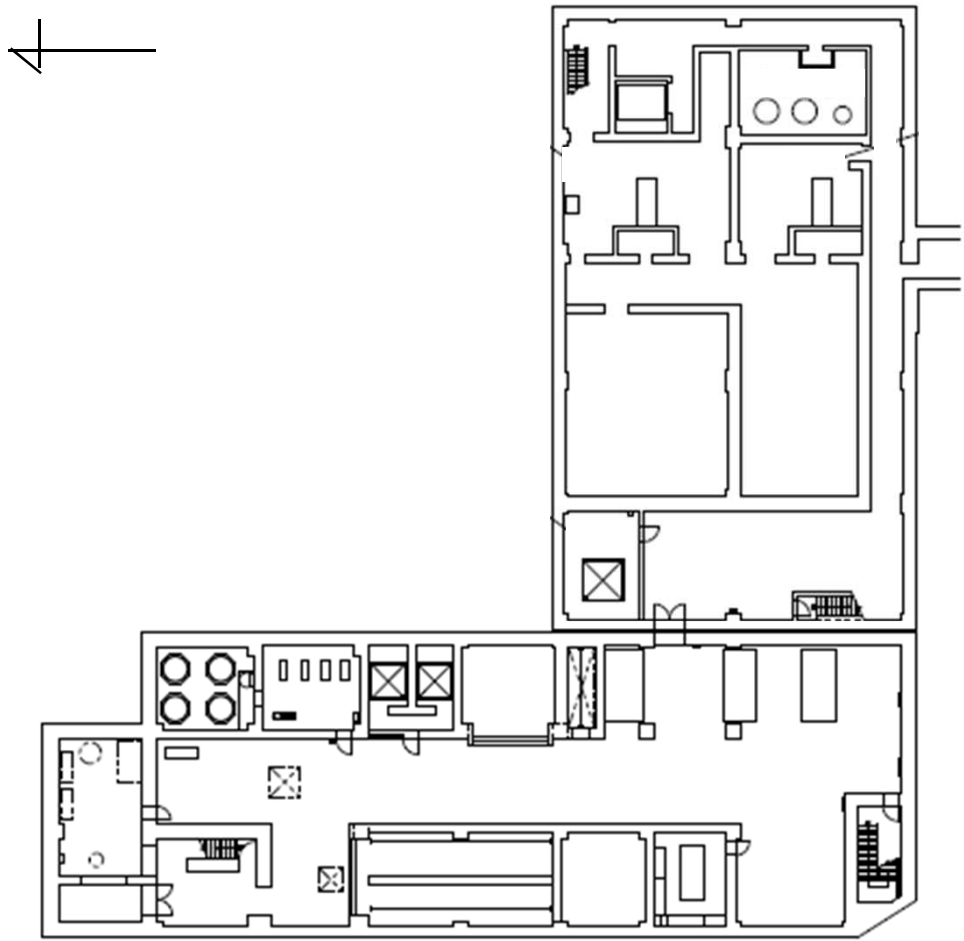
Fukushima Daiichi NPS

Process Main Building 4th Floor

[mSv/h]



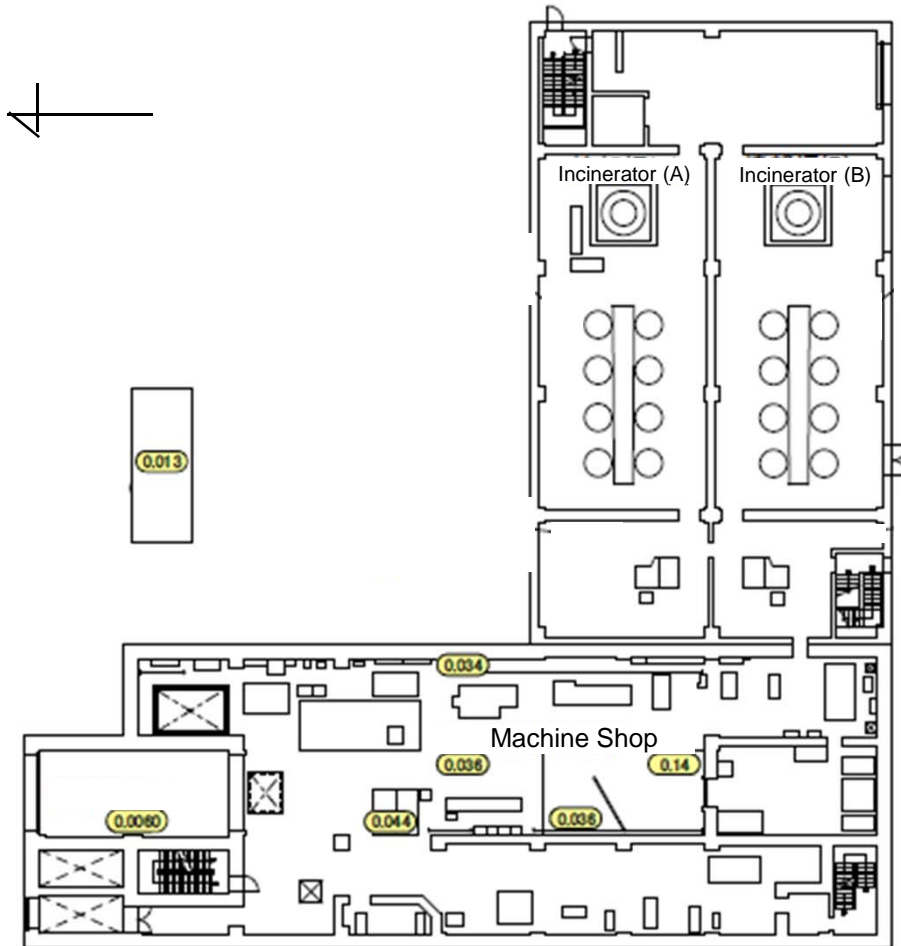
Fukushima Daiichi NPS	Incinerator and Machine Shop Building 1st Basement Floor	[mSv/h]
-----------------------	--	---------



Fukushima Daiichi NPS

Incinerator and Machine Shop Building 1st Floor

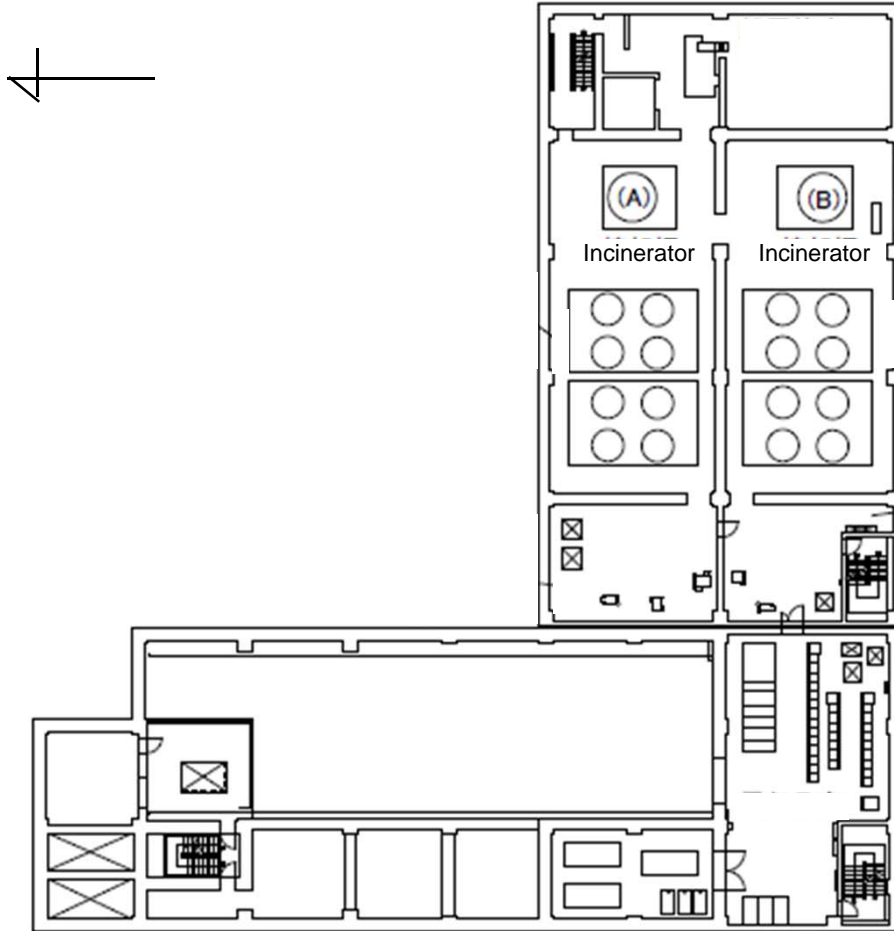
[mSv/h]



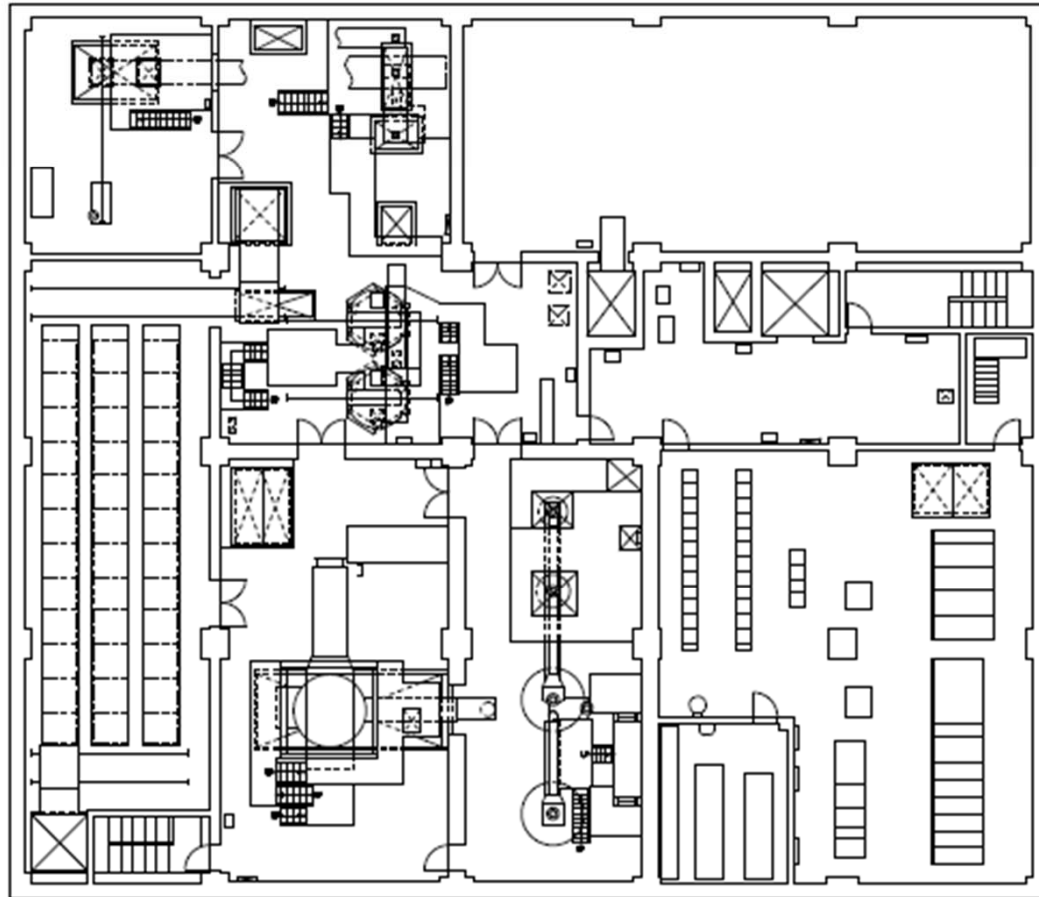
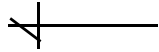
Fukushima Daiichi NPS

Incinerator and Machine Shop Building 2nd Floor

[mSv/h]



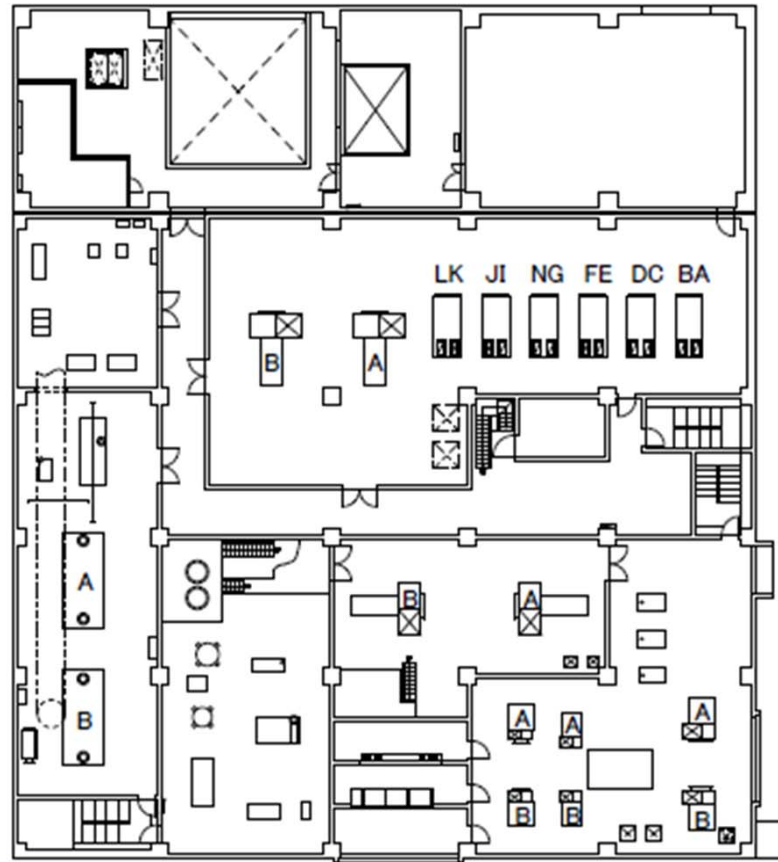
Fukushima Daiichi NPS	High Temperature Incineration Building 1st Basement Floor	[mSv/h]
-----------------------	---	---------



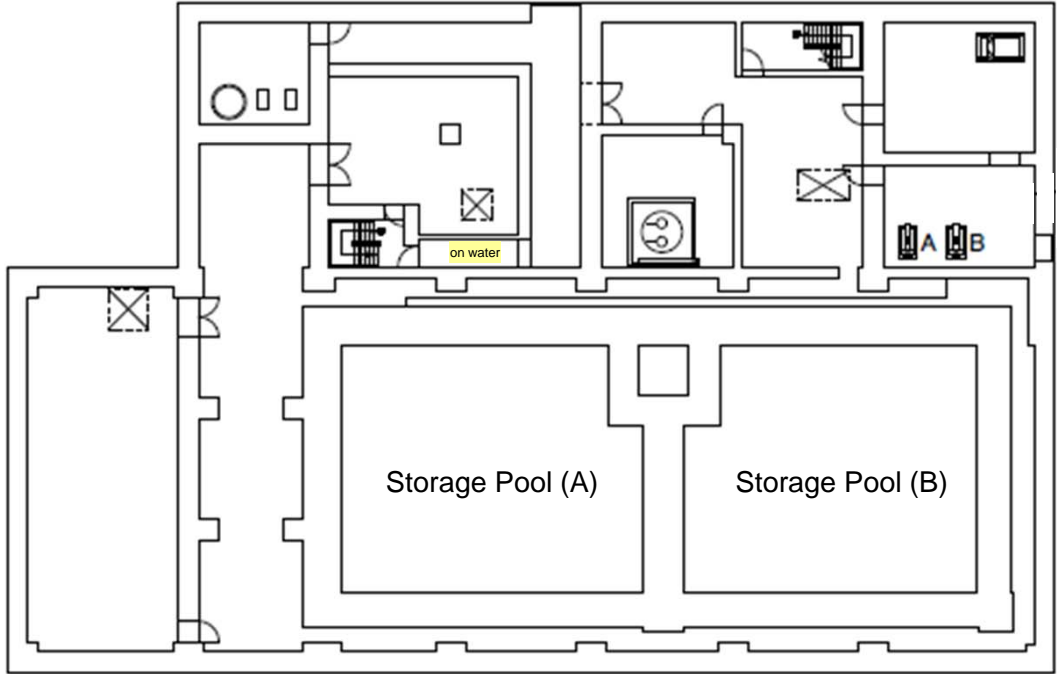
Fukushima Daiichi NPS

High Temperature Incineration Building 2nd Floor

[mSv/h]



Fukushima Daiichi NPS	Site Bunker Building 1st Basement Floor	[mSv/h]
-----------------------	---	---------

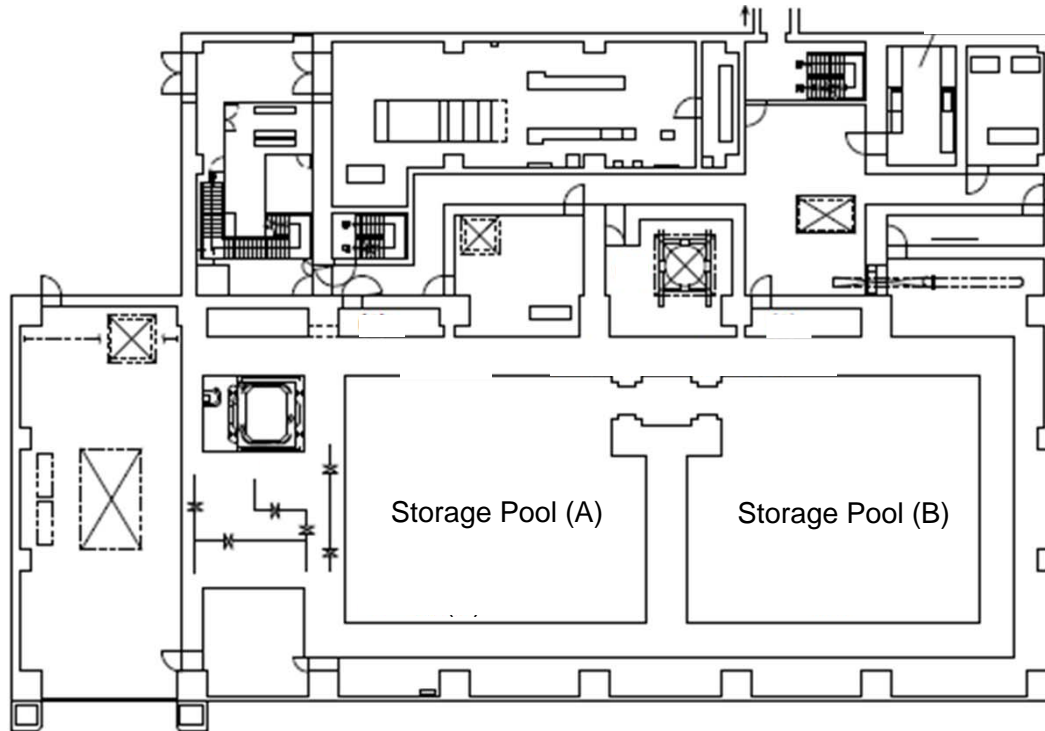


Fukushima Daiichi NPS

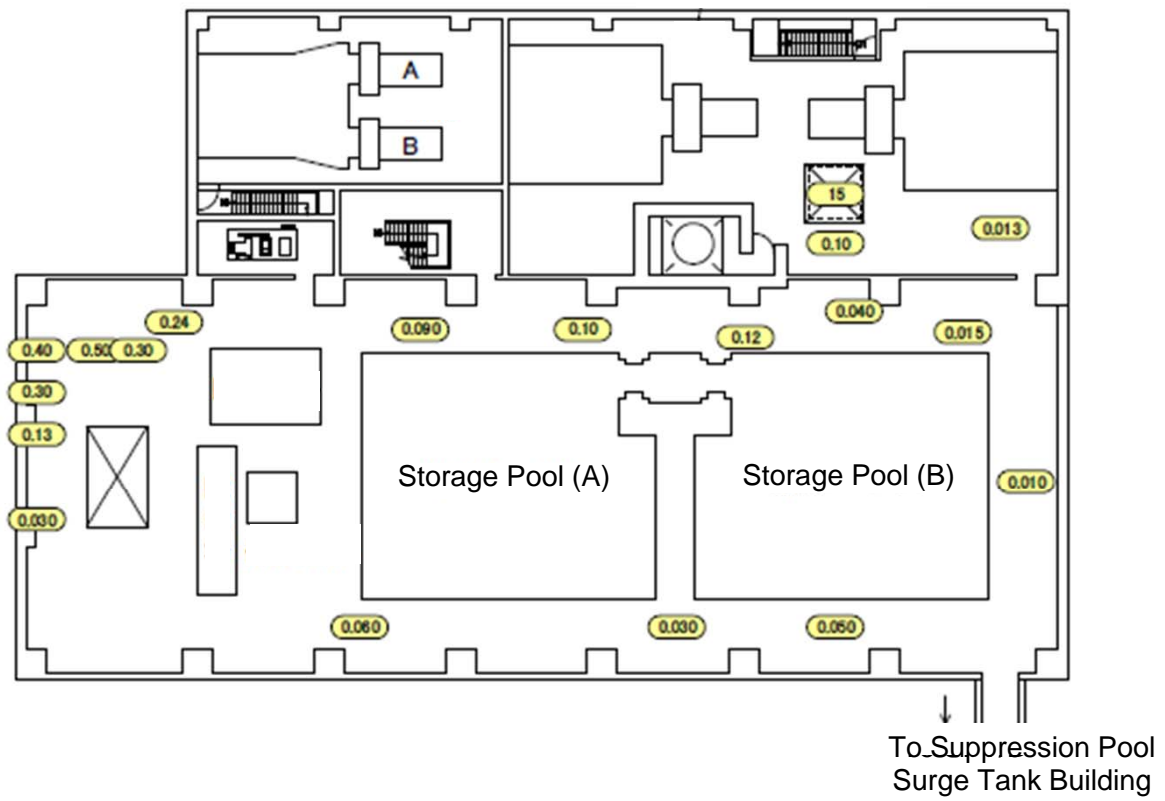
Site Bunker Building 1st Floor

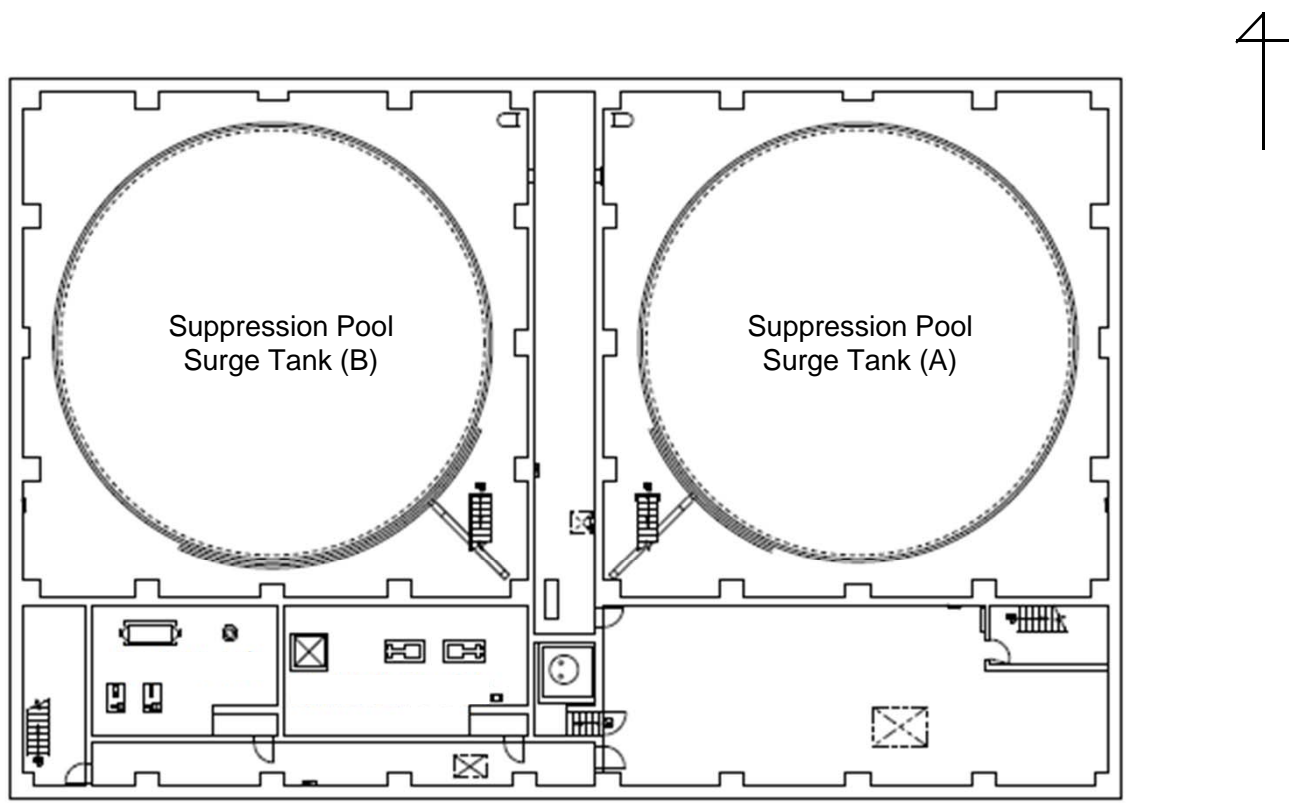
[mSv/h]

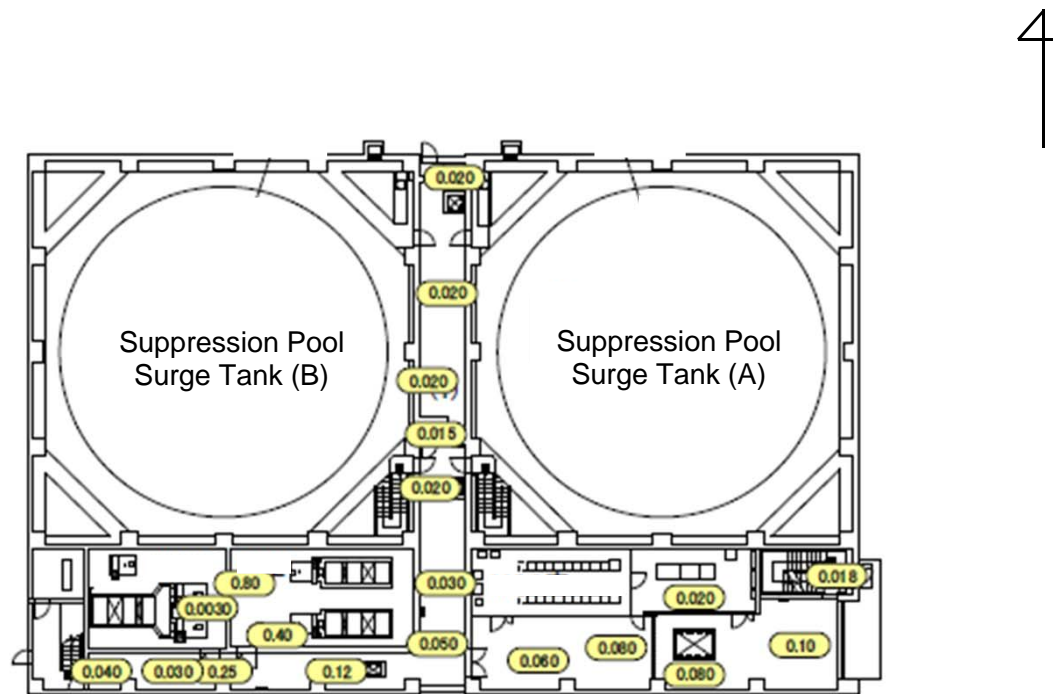
To Process Main Building



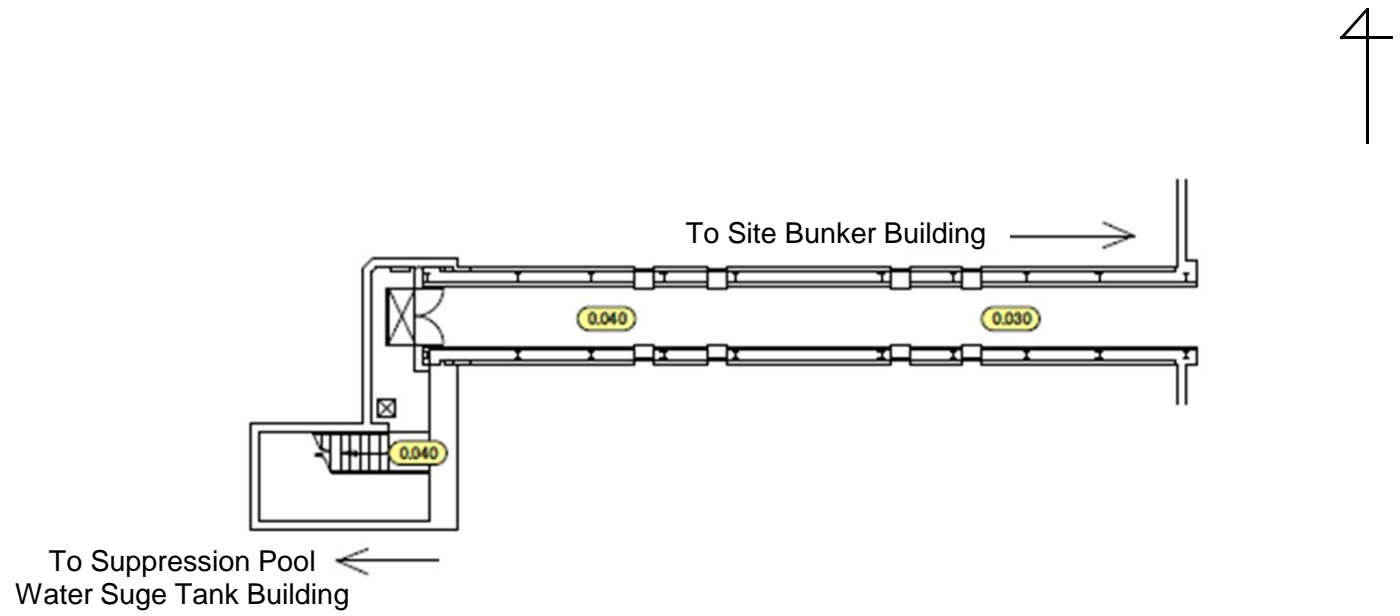
Fukushima Daiichi NPS	Site Bunker Building 2nd Floor	[mSv/h]
-----------------------	--------------------------------	---------







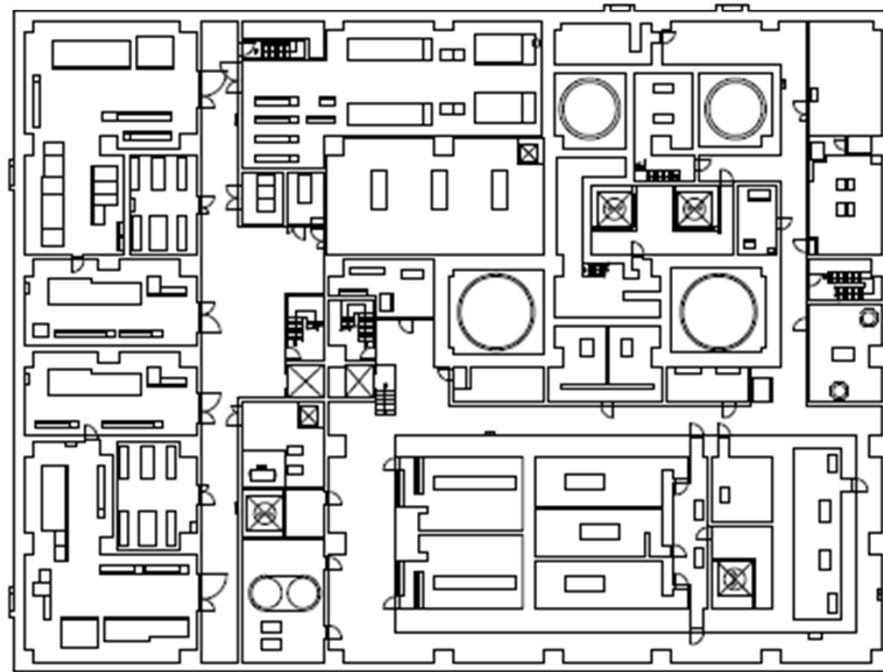
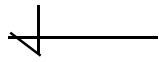
Fukushima Daiichi NPS	Suppression Pool Water Surge Tank Building 2nd Floor	[mSv/h]
-----------------------	--	---------



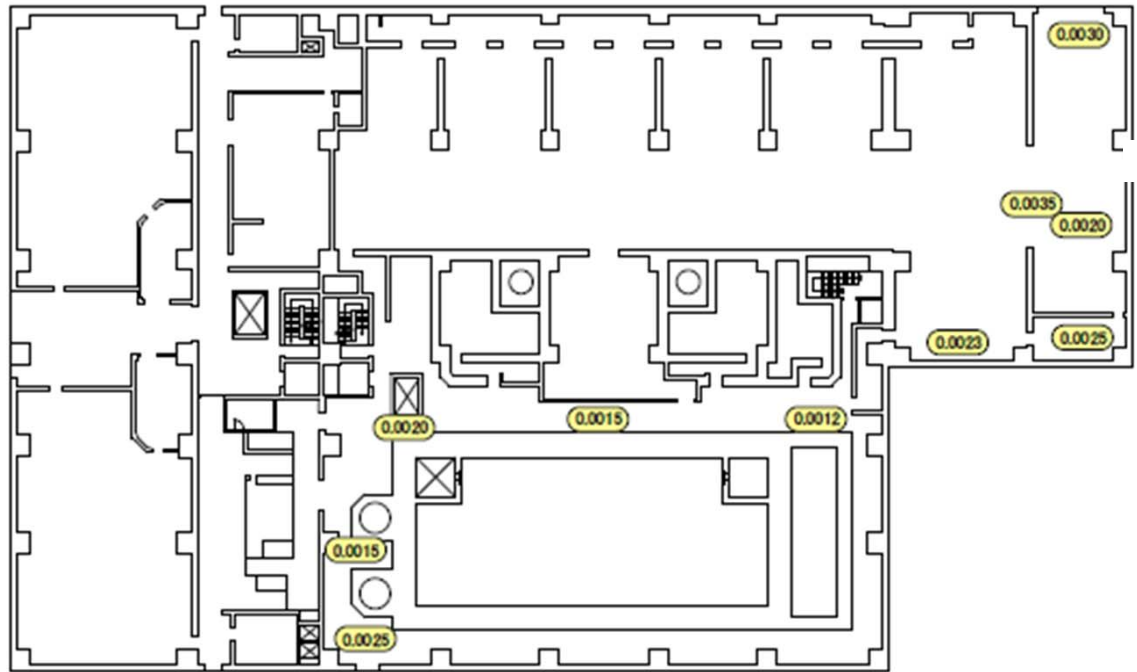
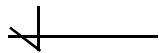
Fukushima Daiichi NPS

Spent Fuel Pool Building 1st Basement Floor

[mSv/h]



Fukushima Daiichi NPS	Spent Fuel Pool Building 1st Floor	[mSv/h]
-----------------------	------------------------------------	---------



Fukushima Daiichi NPS	Spent Fuel Pool Building 2nd Floor	[mSv/h]
-----------------------	------------------------------------	---------

