

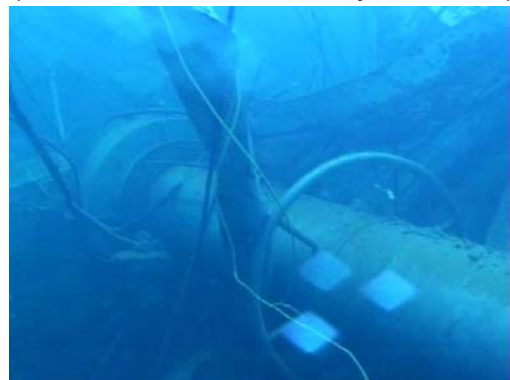
Investigation utilizing an underwater camera was performed to examine the condition of the fuel handling machine mast* which sunk into Unit 3 spent fuel pool while removing steel truss debris from the upper part of the pool on February 6, 2013.

Results

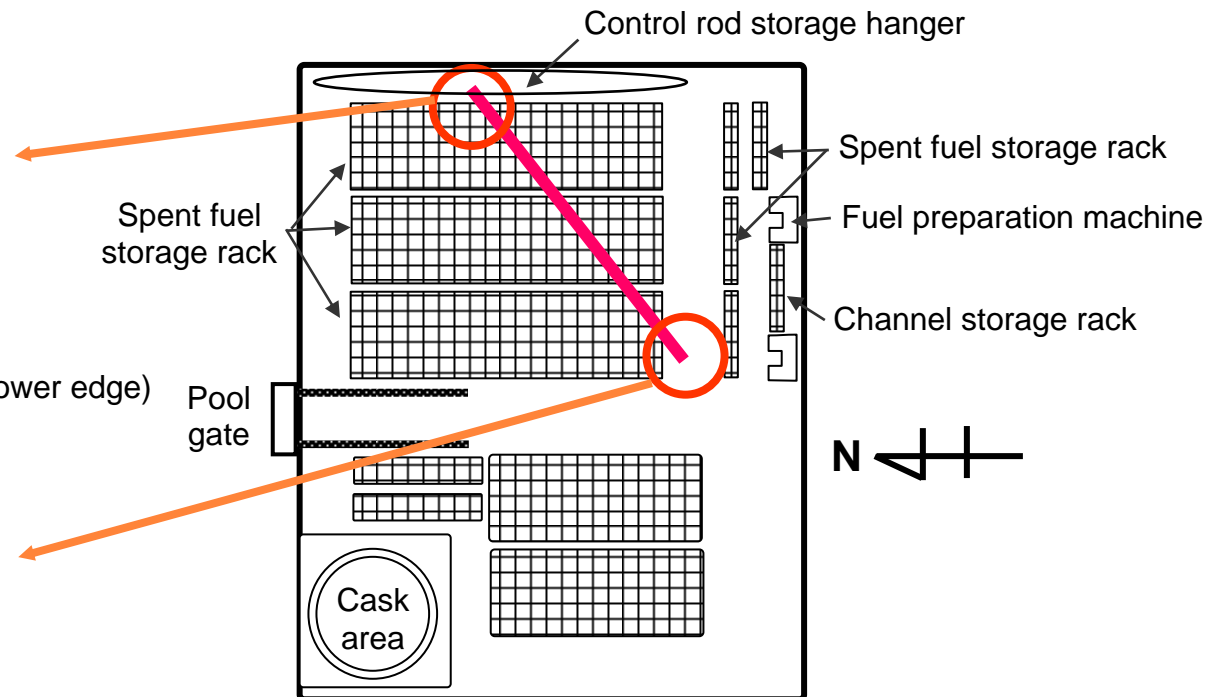
The fuel handling machine mast* was found on the fuel rack and was not directly contacting the spent fuel storage rack and the liner.



Condition of the fuel handling machine mast (Lower edge)
(Photo taken on February 13, 2013)



Condition of the fuel handling machine mast (Upper edge)
(Photo taken on February 13, 2013)



The area investigated by an underwater camera and the location of the fuel handling machine mast
(February 13, 2013)

*Fuel handling machine mast: Extendable pole used to lift the grip up and down when moving the fuel assemblies (Length: Approx. 5-23m, Weight: Approx. 1.5 tons)