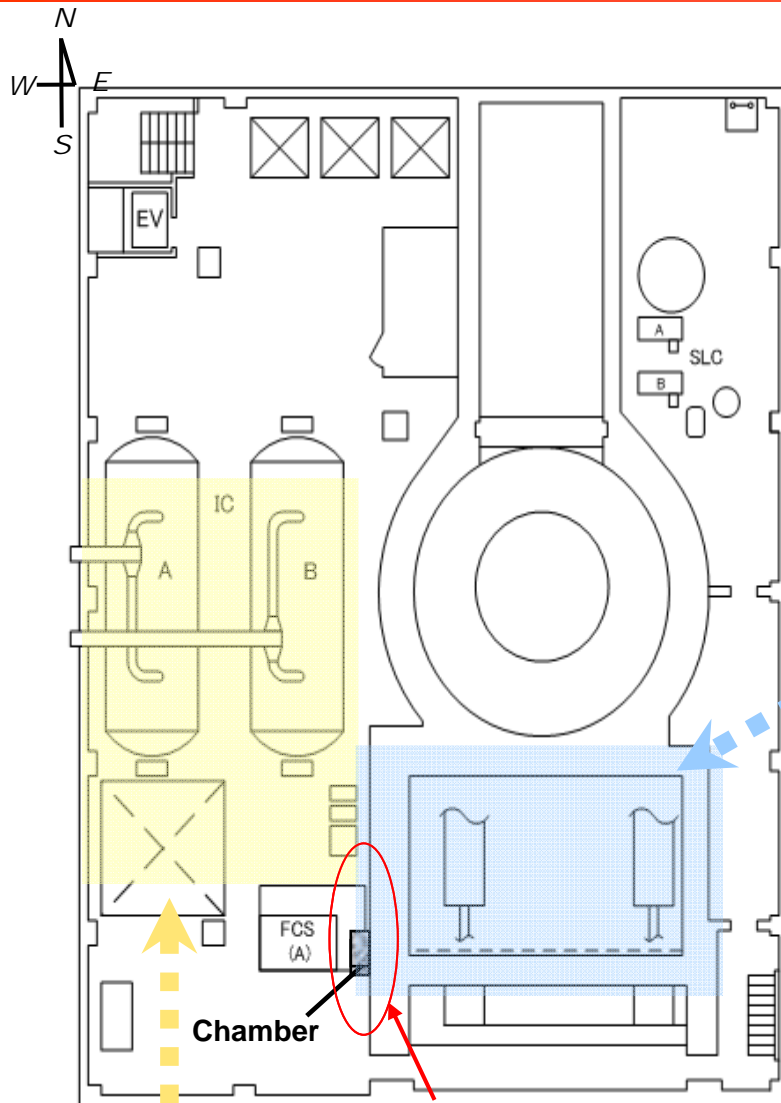
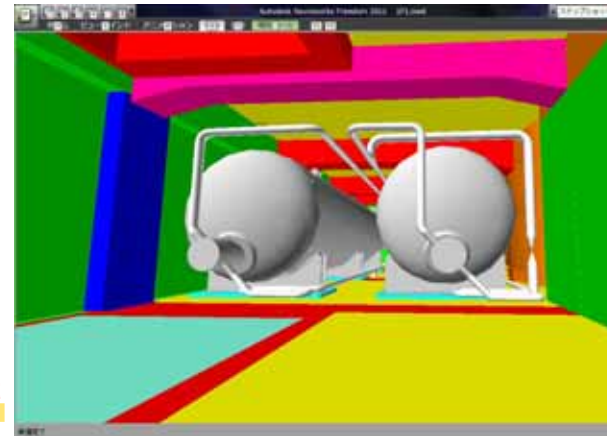
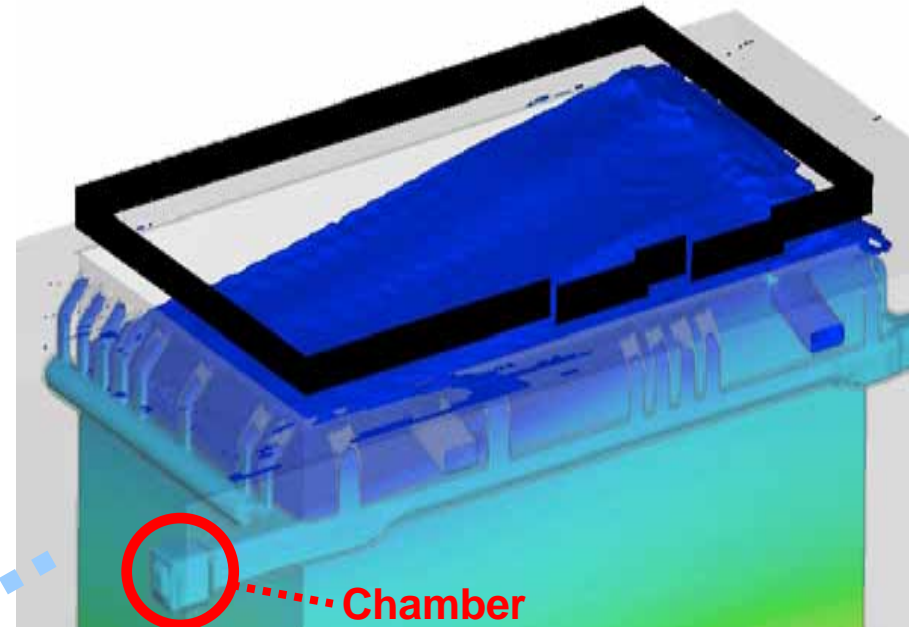


Simulated Images of the Spent Fuel Pool and the Duct at Unit 1 of Fukushima Daiichi Nuclear Power Station

< Reference >
 February 18, 2013
 Tokyo Electric Power Company



Water leakage location witnessed by the investigative panel appointed by the parliament

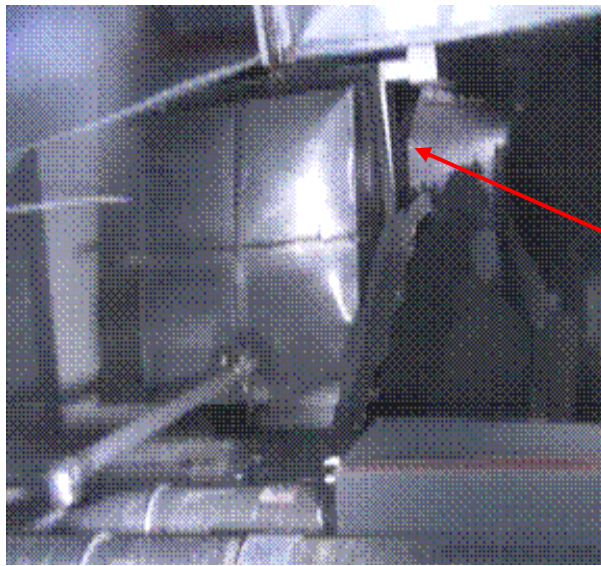


- The duct installation location and the water leakage location witnessed were found to be about the same.
- The water leakage on the fourth floor is assumed to have been caused by pool water generated by sloshing going through the air conditioning duct and overflowing from the chamber for overflow prevention.

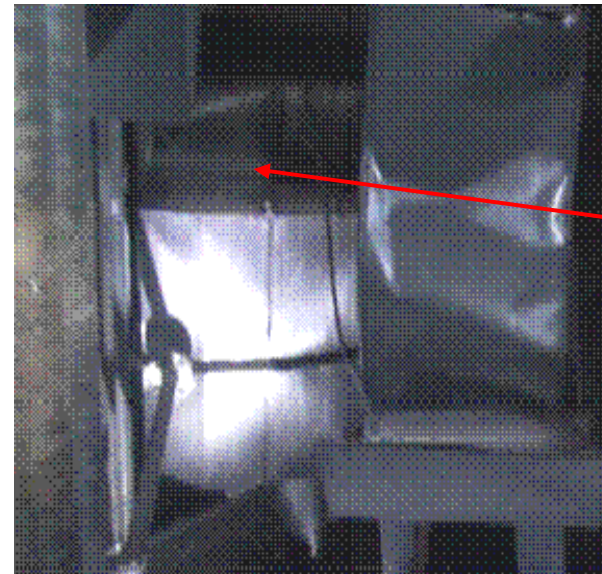
Note: The intensity of illumination and contrast of the images has been enhanced.

Conditions of the Closed Part of the Duct (Chamber, Closure Panel) at Site Investigation Performed on November 30, 2012

- The conditions of the overflow prevention chamber were as follows.
 - Major deformation was found on the closure panel installed on the south surface and an opening has been generated as a result.
 - The panel on the north surface has been deformed (bulged from the inside).
 - The inspection opening flange on the west surface could not be confirmed visually.
- Though the insulation material on the most part of the emergency condenser vent line pipe (in the upper part of the spent fuel pool wall near the overflow prevention chamber) has come off, no major damage (which can be easily found visually) was found on the pipe itself.



South surface of the chamber (closure panel)



North surface of the chamber

Note: The intensity of illumination and contrast of the photos has been enhanced.