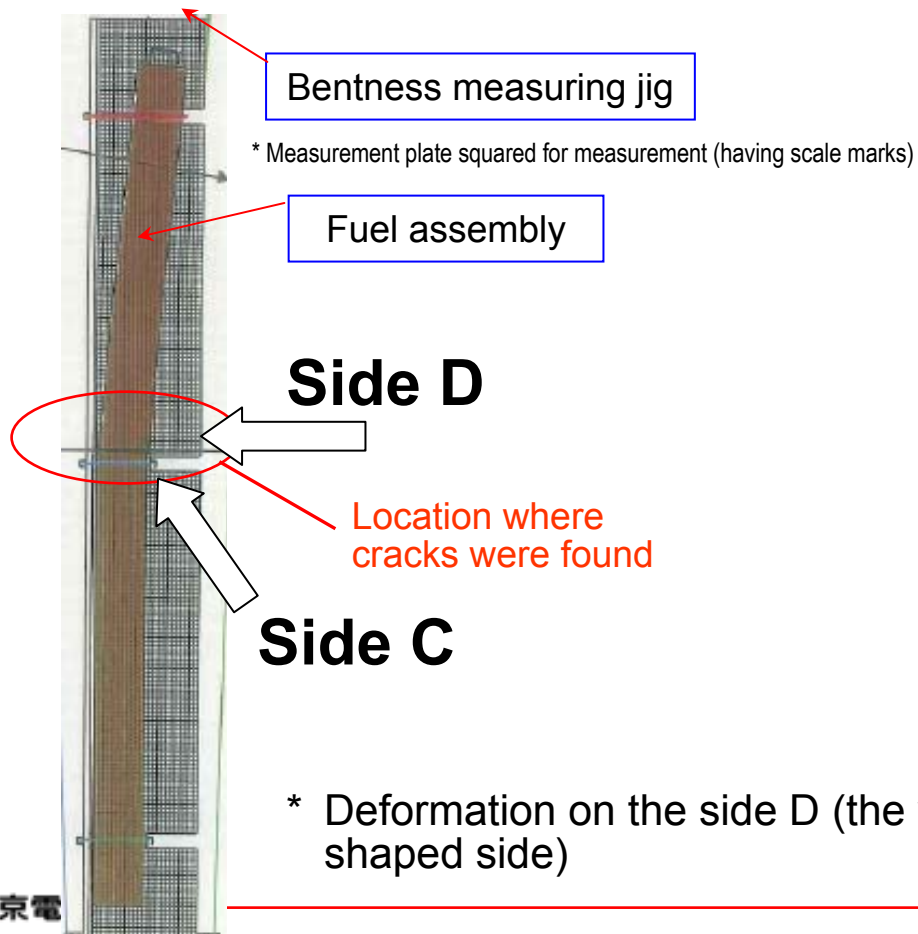


Cracks Found during Inspection on Fuel Assembly Having Deformation in Fukushima Daiichi NPS Unit 4 Spent Fuel Pool

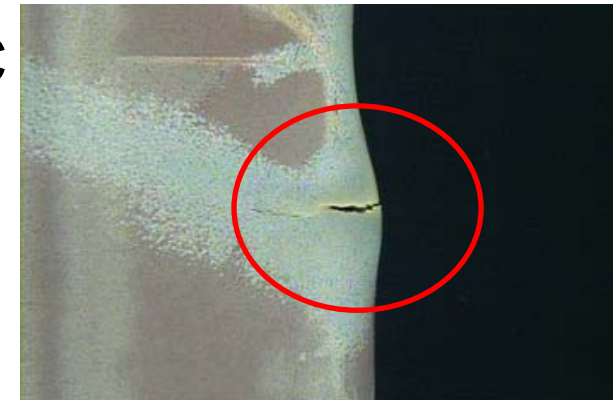
< Reference >
December 27, 2013
Tokyo Electric Power Company

- Regarding a fuel assembly having its handle/channel box deformed (*) due to mishandling in the past, an inspection of the shape was conducted to know the degree of deformation. During the inspection, cracks were found in the channel box of the fuel assembly. We consider these cracks were caused when the channel box was deformed in the past. During this inspection, there was no change in the radioactive material concentrations in water of the spent fuel pool and the doses obtained by area monitoring.

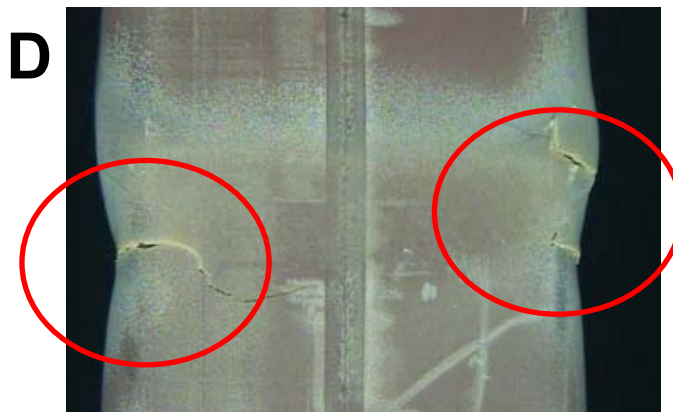
(*) The occurrence situation and the investigation summary have been disclosed in NUCIA (Nuclear Information Archives) (Report No. 1982-Tokyo-T003)



Side C



Side D



* Deformation on the side D (the valley-shaped side)