

<Reference>

Results of Investigation on Upper Parts of S/C (Suppression Chamber) of Unit 1 at Fukushima Daiichi NPS

May 27, 2014

Tokyo Electric Power Company



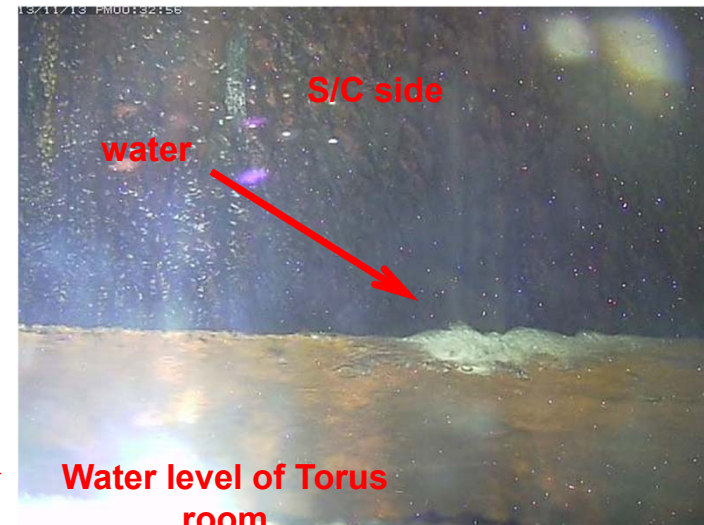
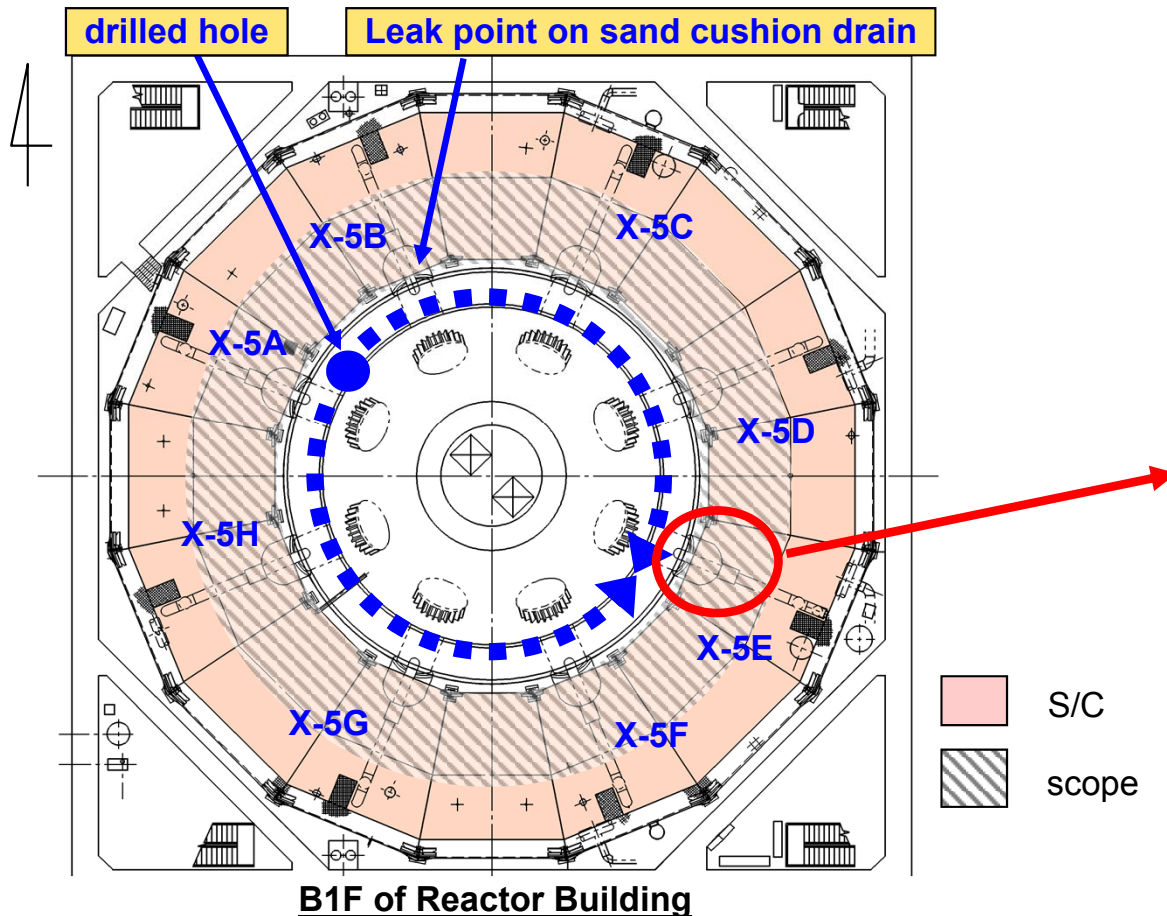
東京電力

IRID

Investigation inside the S/C using a water boat (November, 2013)

- In November 2013, the presence of water leakage was checked at inner part of S/C as investigation around lower parts of vent pipes
 - Water leakage from upper part of S/C (near X-5E, southeast) was found.
 - Water leakage from sand cushion drain (near X-5B, northwest) was found.

Investigation was conducted to find the leak point on upper part of S/C (near X-5E)



Leak point on inner part of S/C



Water boat: travel test at factory

overview

Equipment (under development for investigation and maintenance (water stop) for watering C/V) for investigation on upper part of S/C was put in from the drilled hole in northwest area, and investigation from outer cat walk was conducted.

- Confirmation of the leak point on S/C upper part (near X-5E)
- Inquire for leak on S/C upper Outboard * on Northern Outboard (May 27)

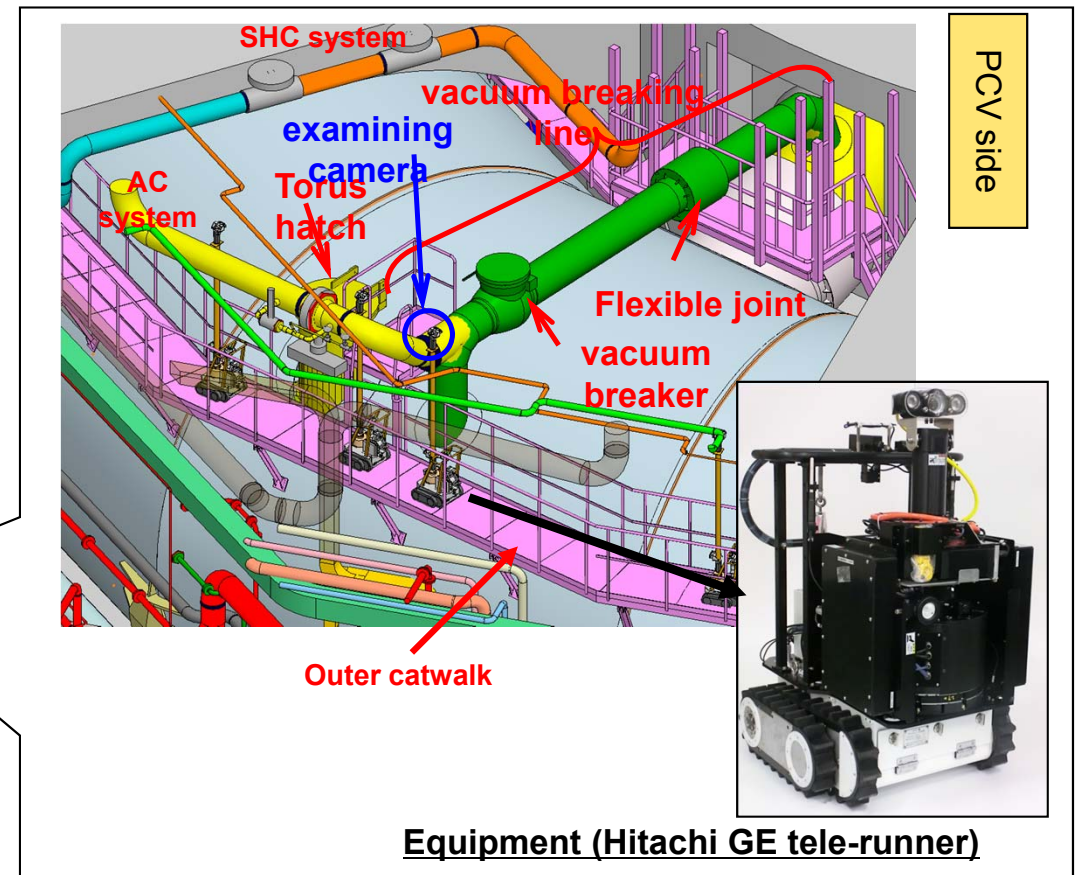
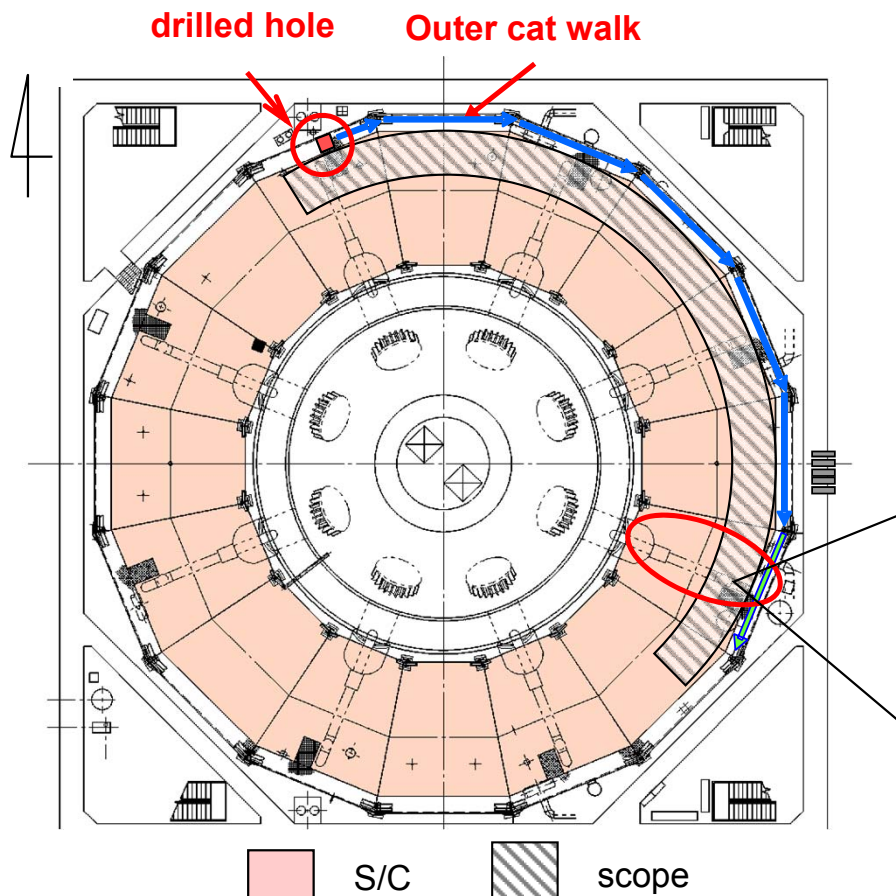


Image of the investigation on S/C upper part

B1F of the Reactor Building

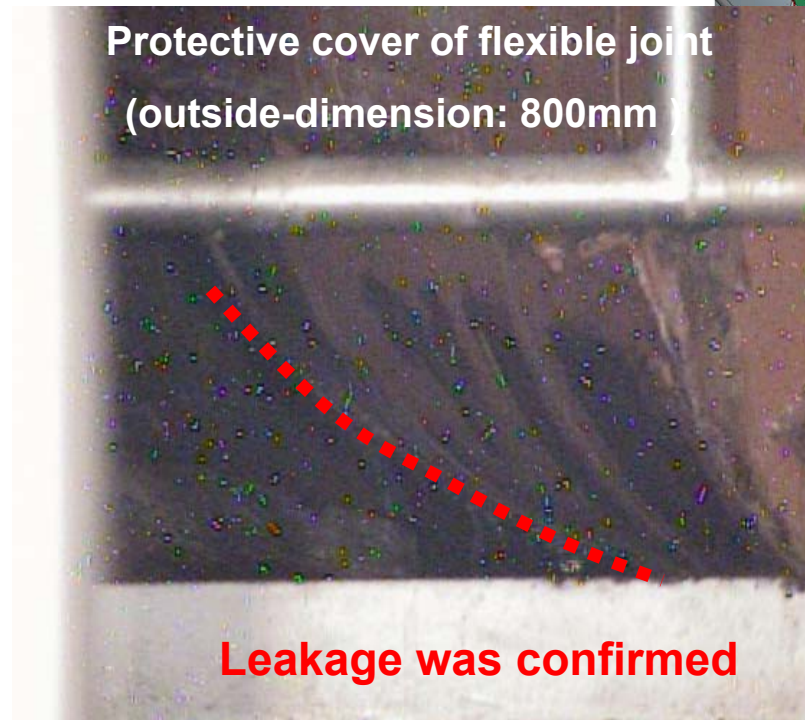
Results

■ Situation of the upper part of S/C (near X-5E)

- Leakage were found on both PCV side and opposite side of flexible joint cover of vacuum breaking line

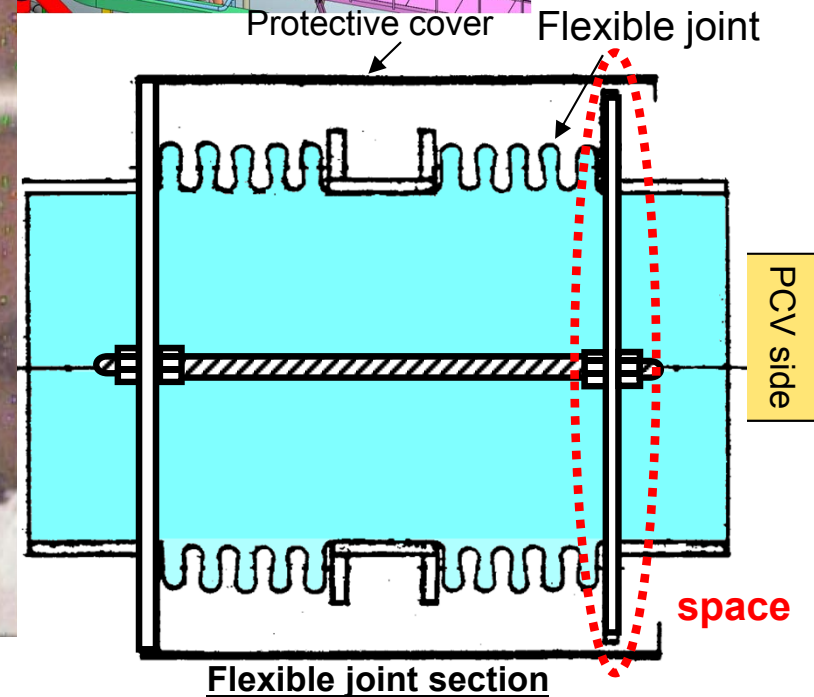
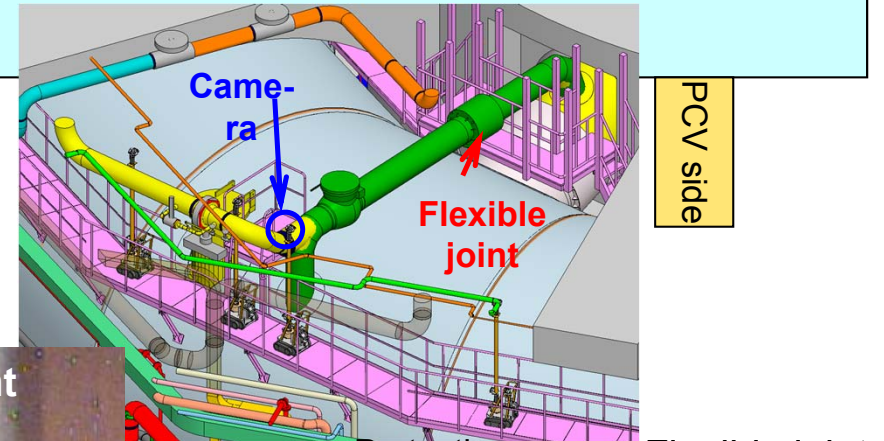


Flexible joint (PCV side)



Protective cover of flexible joint
(outside-dimension: 800mm)

Leakage was confirmed

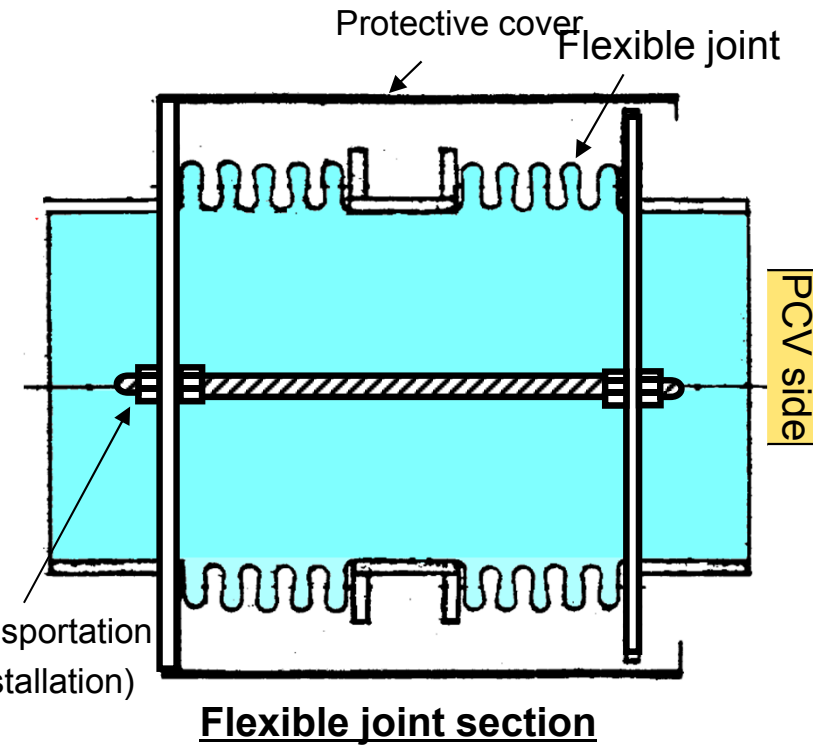
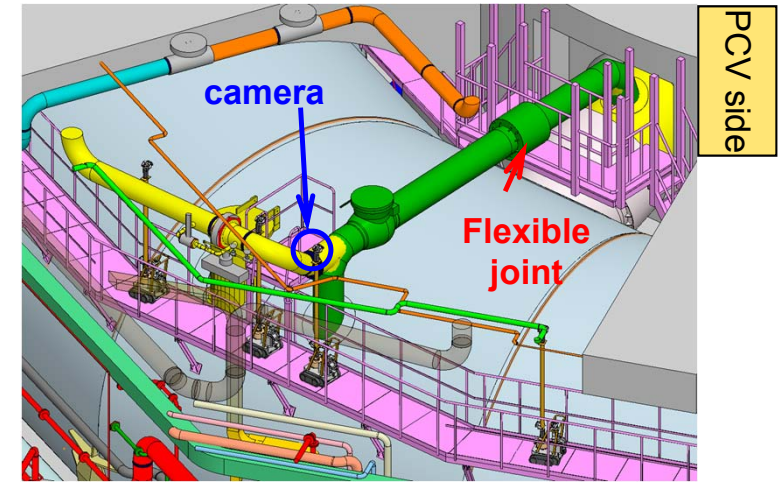


Results

Flexible joint (opposite side of PCV)



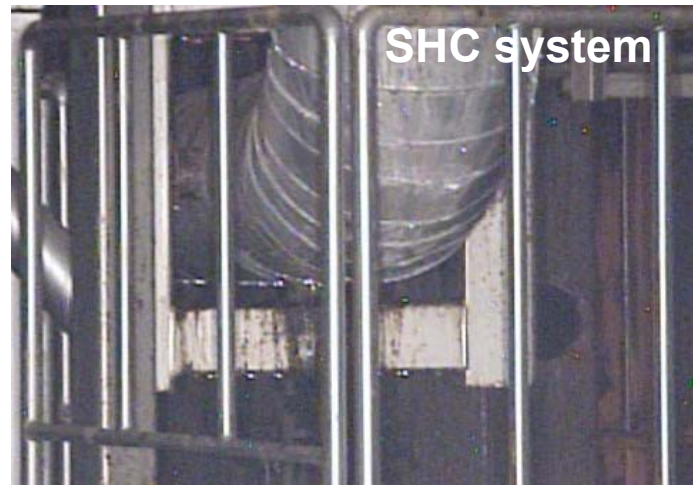
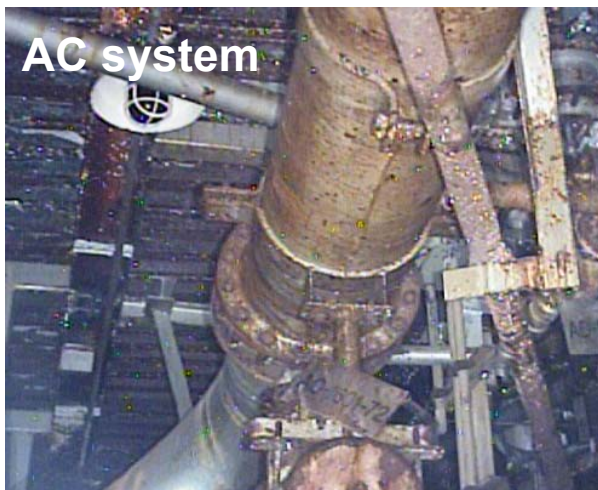
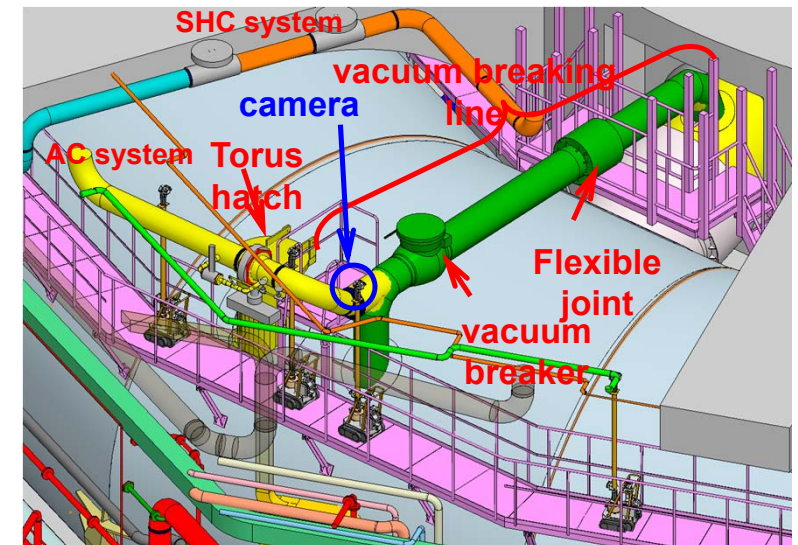
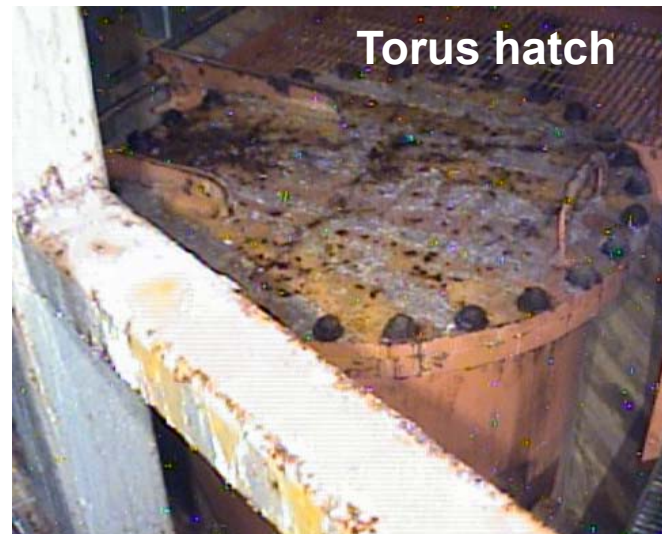
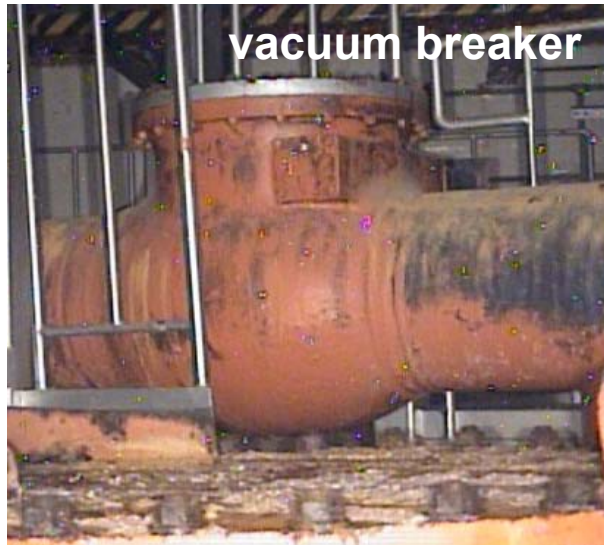
Leak point



Results

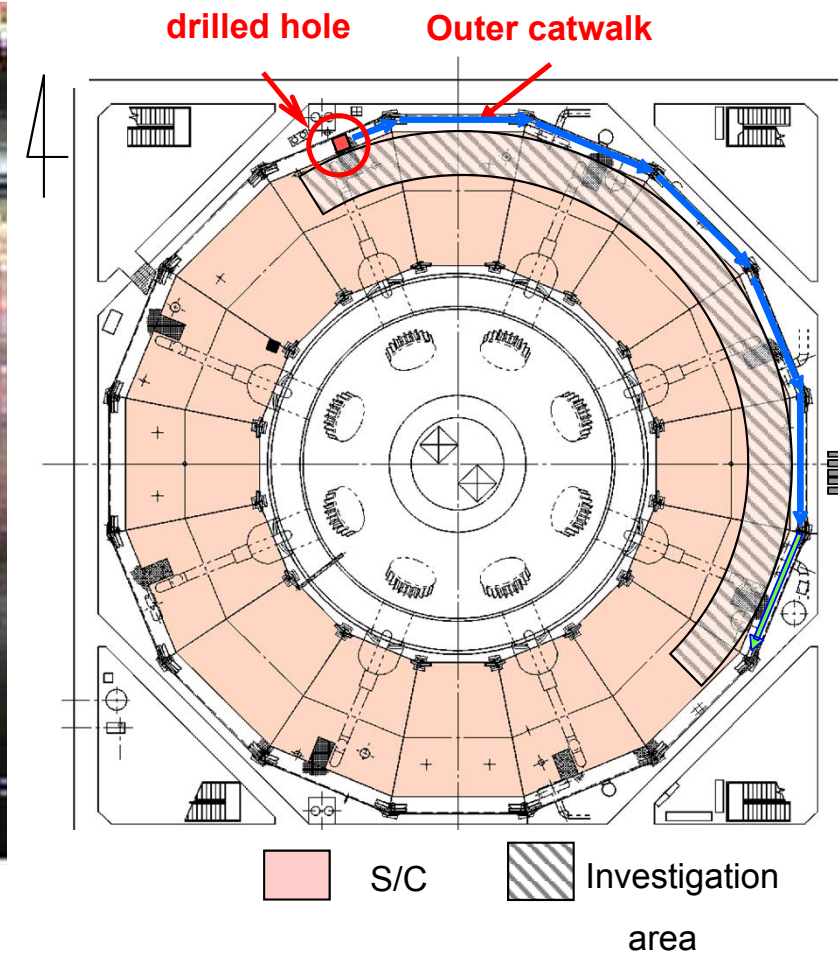
■ Situation of the upper part of S/C (near X-5E)

- No leakage was found on vacuum breaker, torus hatch, SHC system pipe, and AC system pipe.



Results

- Situation of outside of the upper part of S/C (North)
 - No leakage/serious damage on systems was found



Inquiry schedule

- Investigation of outside (southern side) of the upper part on S/C will be conducted tomorrow.

May (2014)		
schedule	drilling 20-26	Investigation on upper part of S/C
	27	28 extra day

