

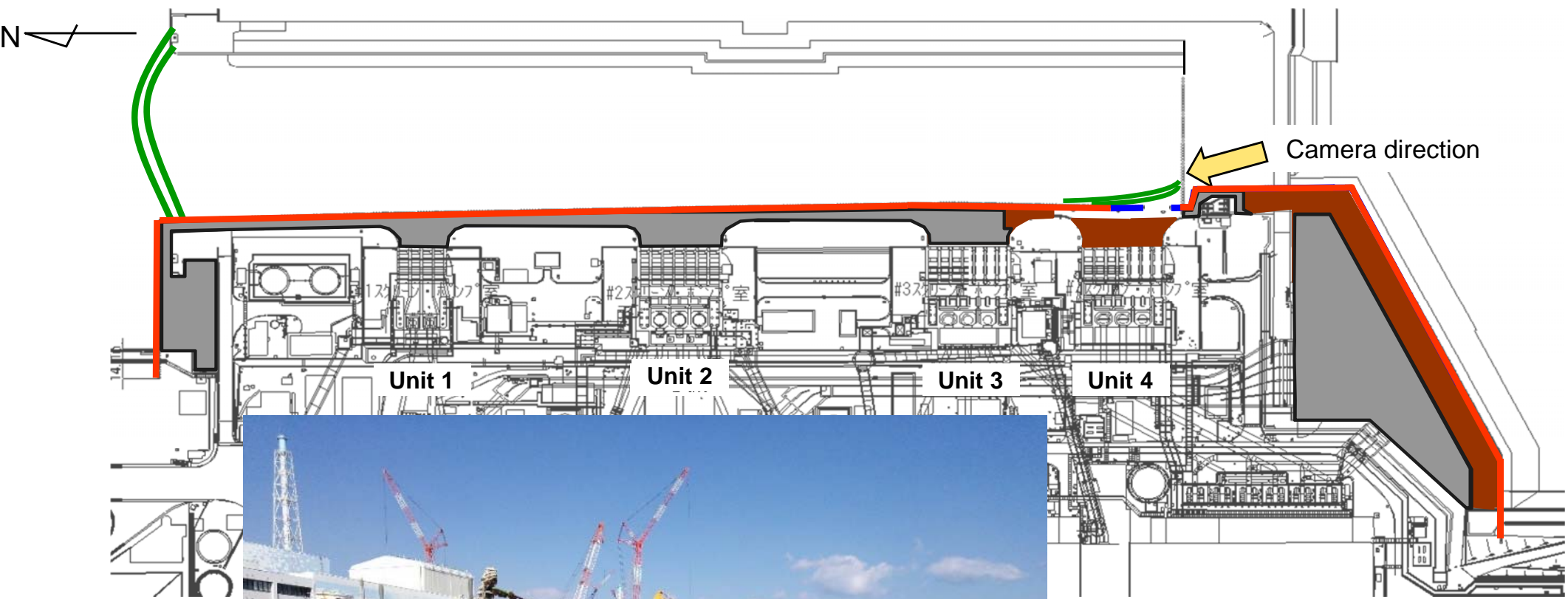
Seaside Impermeable Wall Closing Operation

September 9, 2015
Tokyo Electric Power Company



東京電力

Current status of seaside impermeable wall closing point



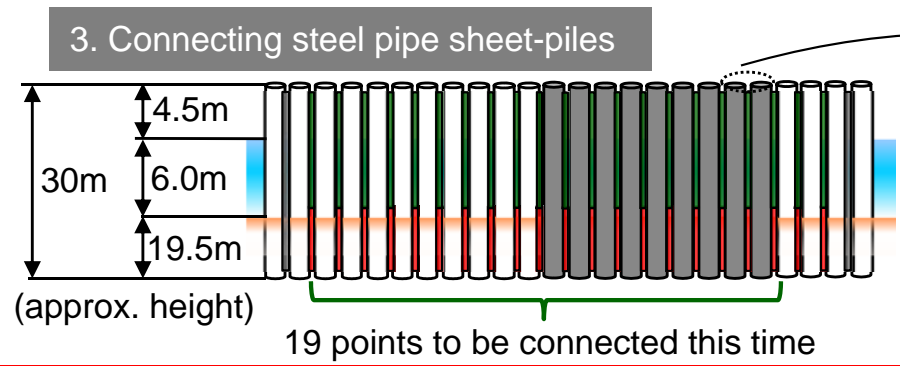
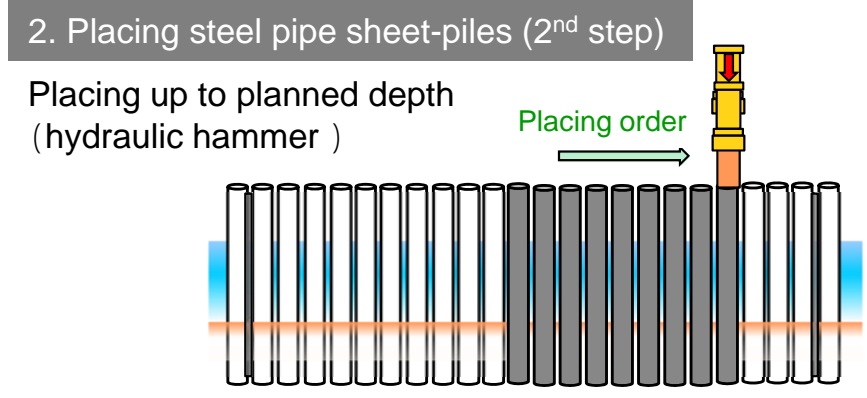
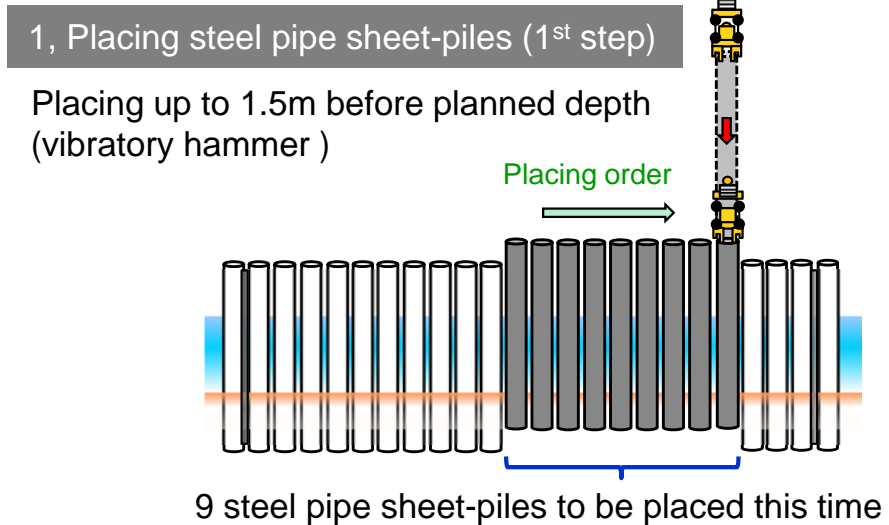
- : Silt fence
 - : Placing steel pipe sheet-piles completed
 - : Connecting steel pipe sheet-piles completed
 - : Filling with broken stone completed
 - : Pavement construction completed
- (As of September 9)

Seaside impermeable wall closing point: The open space for 9 steel pipe sheet-piles to be placed (approx. 10m extension)

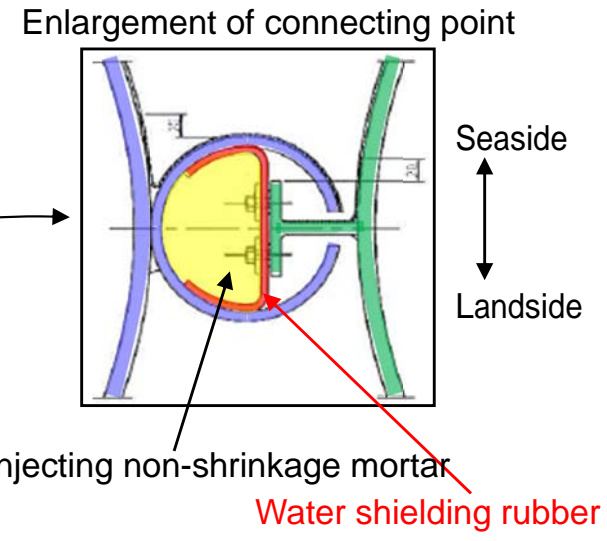
Seaside impermeable wall closing operation procedures

- The operation of subdrain system started on September 3 and has not been found any problems until today.
- Placing steel pipe sheet-piles will be resumed from September 10 and the placement will be conducted in two steps.
- After completing the placement of steel pipe sheet-piles, each pile will be connected to improve water shutoff.

The schedule is subject to change due to the bad weather and other prevailing conditions.



Placing steel pipe sheet-piles (1st step)



Seaside impermeable wall closing operation schedule

				Year 2015		
		August	September	October		
Preparation	Preparation of equipment etc.					
Placing steel pipe sheet-piles*			Start closing (September 10)			
Connecting steel pipe sheet-piles*			Completion of closing			

Discharging groundwater under the operation of subdrain water treatment facilities will start on September 14.

*The schedule is subject to change due to the bad weather and other prevailing conditions .