

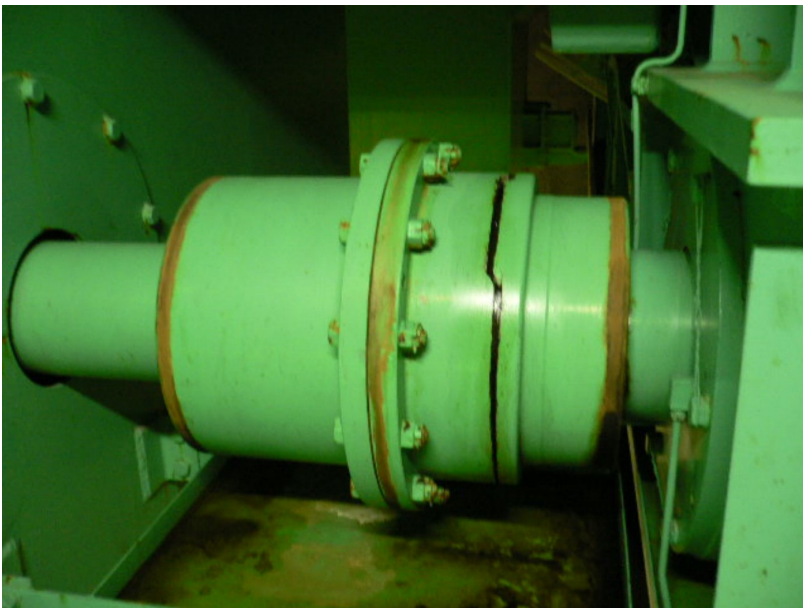
【Reference】

October 28, 2011  
Tokyo Electric Power Company

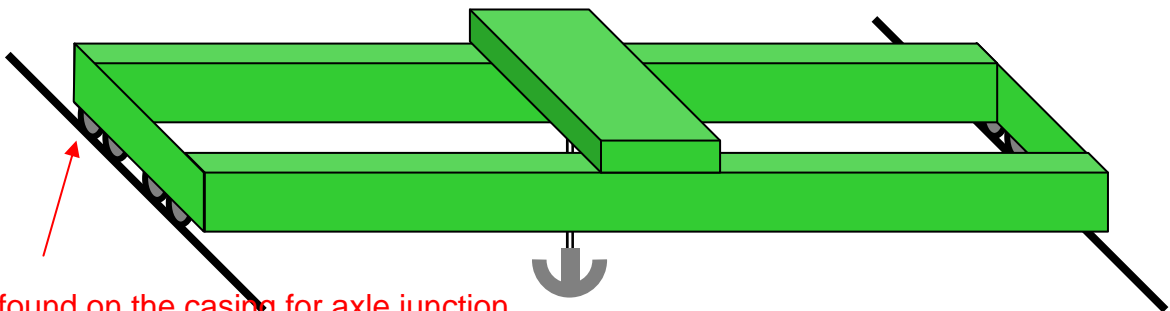
### Crack on the casing for axle junction of Ceiling Crane of Spent Fuel Pool Building at Fukushima Daiichi Nuclear Power Station



date : October 27, 2011  
source : Tokyo Electric Power Company



date : October 27, 2011  
source : Tokyo Electric Power Company



Crack was found on the casing for axle junction

Image of Ceiling Crane