

Result of the second investigation inside of Primary Containment Vessels, Unit 2, Fukushima Daiichi Nuclear Power Plant

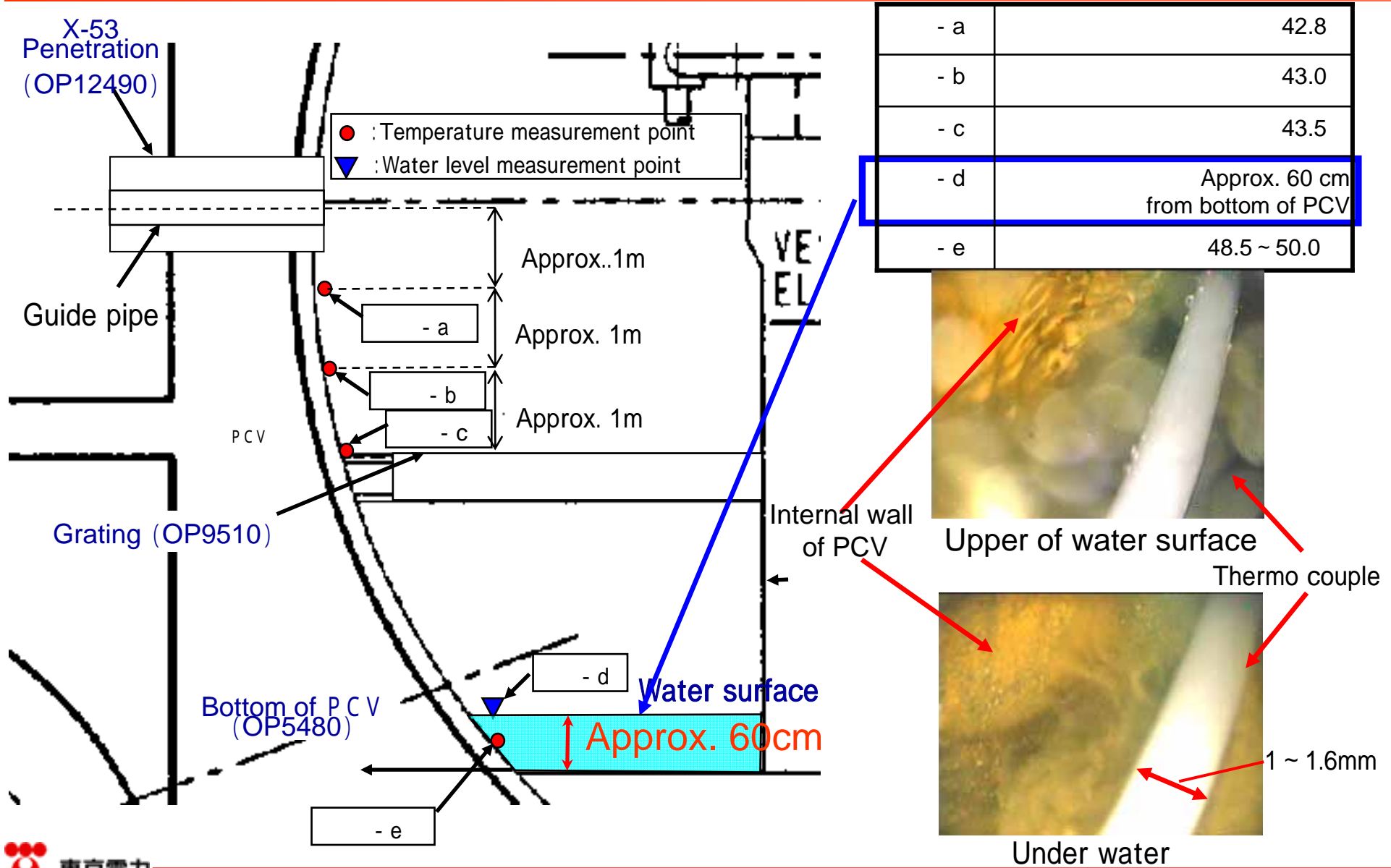
March 26, 2012

Tokyo Electric Power Company

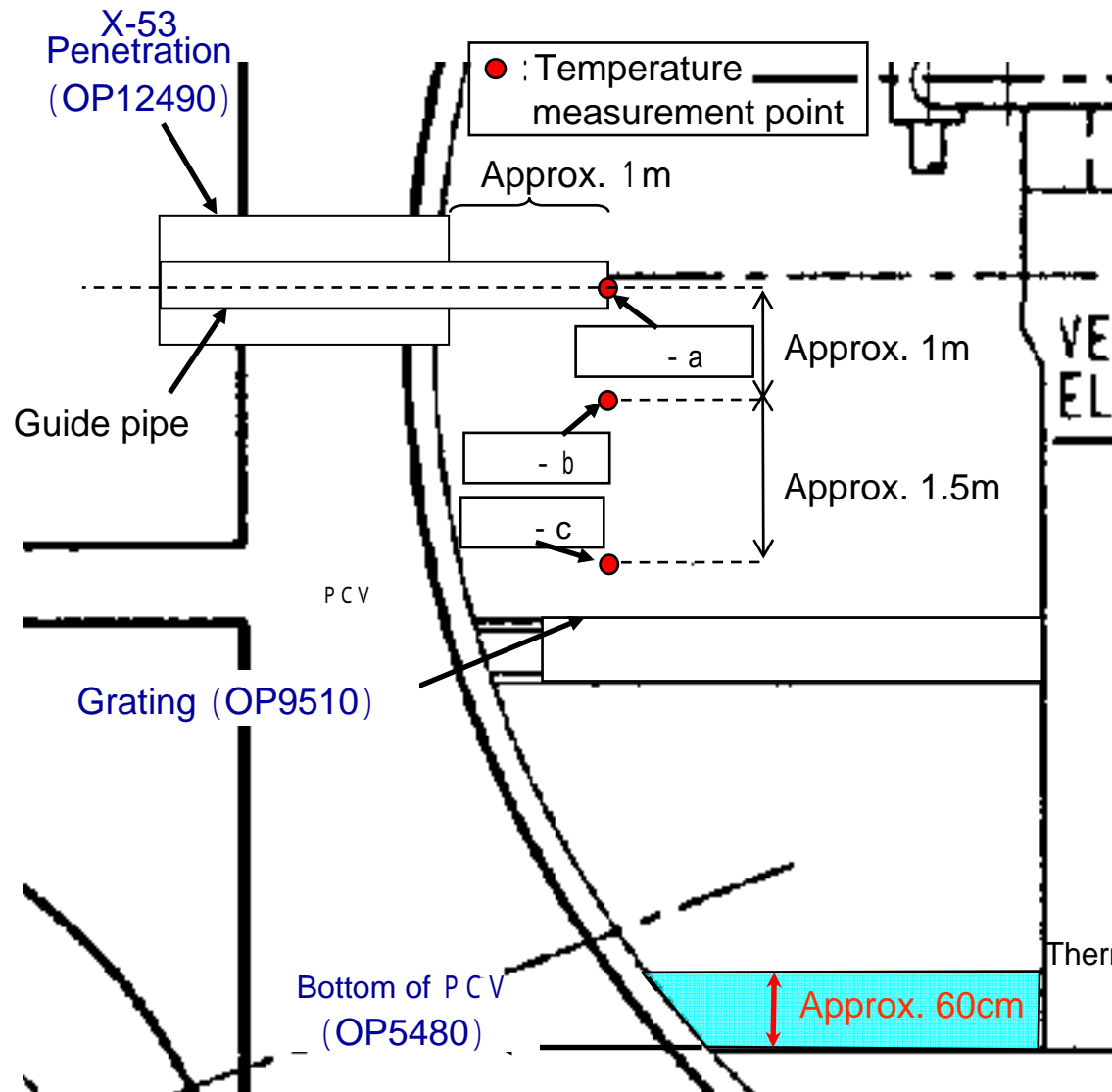


東京電力

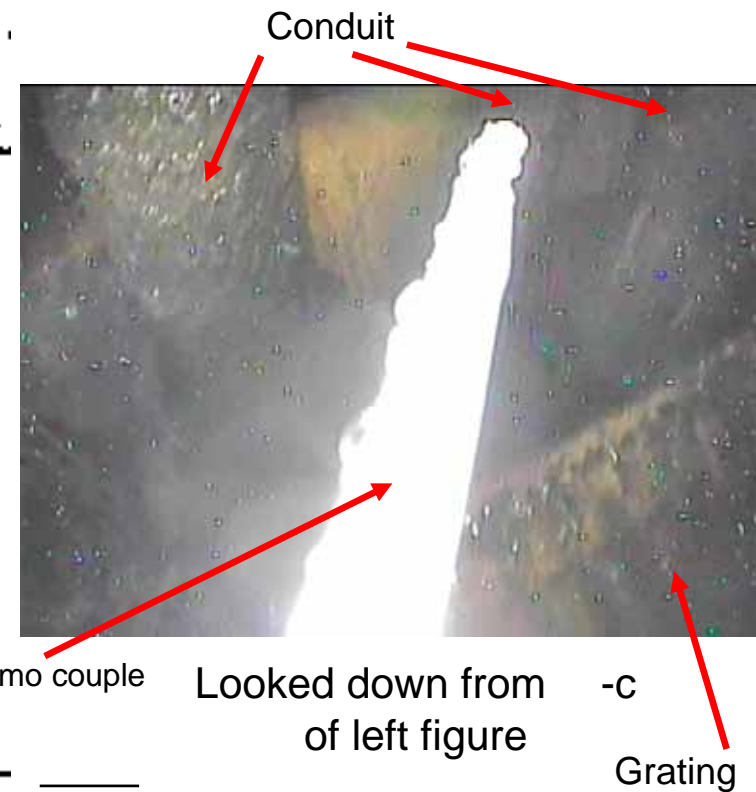
Water level and Ambient temperature of accumulated water of the PCV



Atmosphere temperature of centrally-direction of the PCV (Approx. 1m from X-53 penetration)



- a	44.9
- b	44.6
- c	44.5



Results of today's Investigation

- ✓ We assume the water level of accumulated water of Unit2 PCV is approx.60cm from bottom of PCV.
- ✓ We confirmed temperature of accumulated water was approx. 48.5 - 50 .
- ✓ Accumulated water was transparent but we confirmed there was sediment materials.

Details of Today's work

Date : From 9:40 to 12:30 ,March 26 (Mon), 2012

Technical support : Toshiba

Number of workers : Toshiba: 16, Tepco: 18

Maximum exposure dose: 5.29mSv/person · day

(Planned exposure dose:10mSv/person · day)



Scene of the working

(Reference) Spec of Video Image Scope



Display and Controller
< Main Spec >



Apical part of the camera

Outer diameter of insertion part	8.5mm(outer diameter of apical part : 12.7mm)
Active length of insertion part	20m
Usable temperature range of insertion part	~ 100 (in air)、 ~ 30 (in water)
radiation hardness	1000Gy