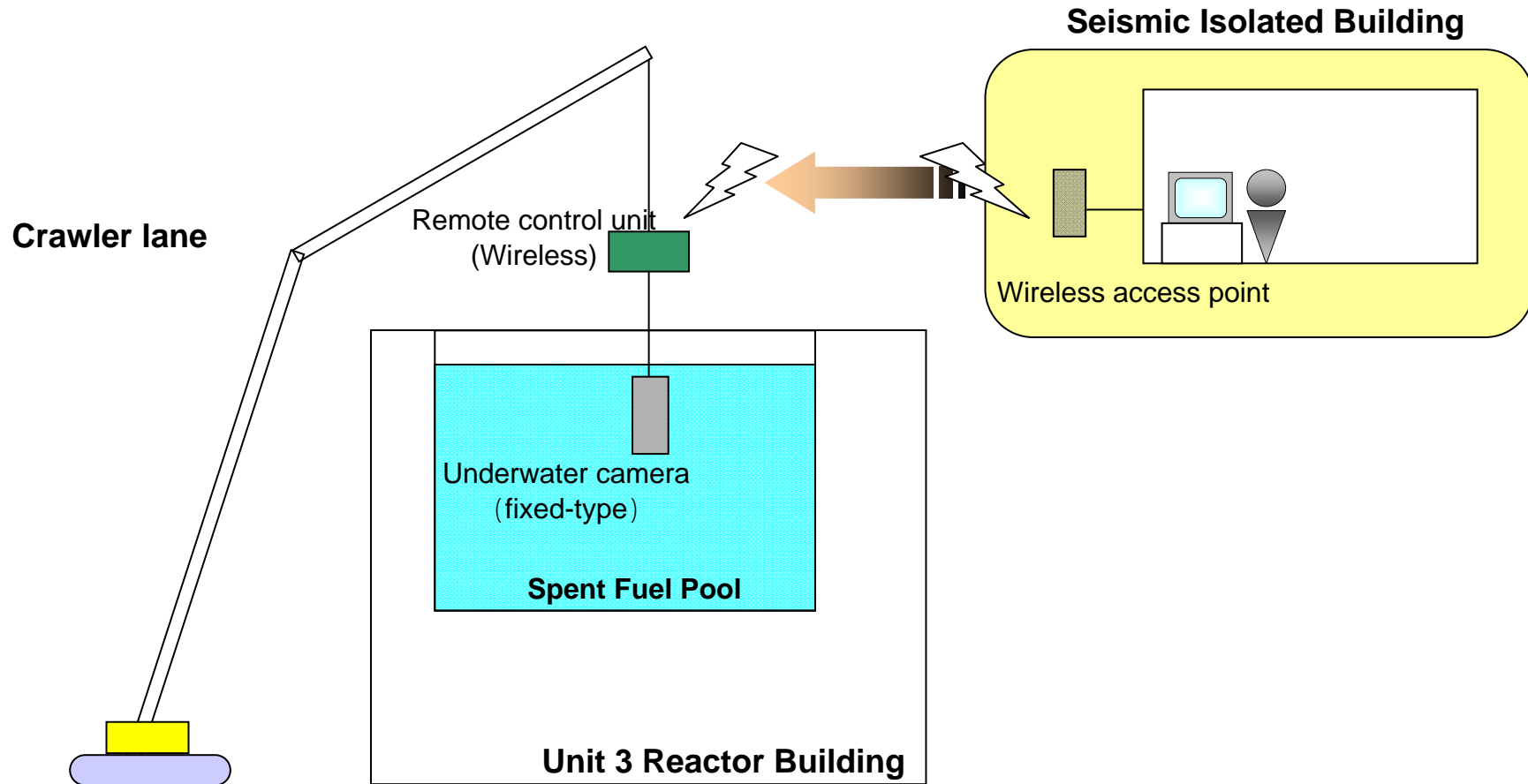
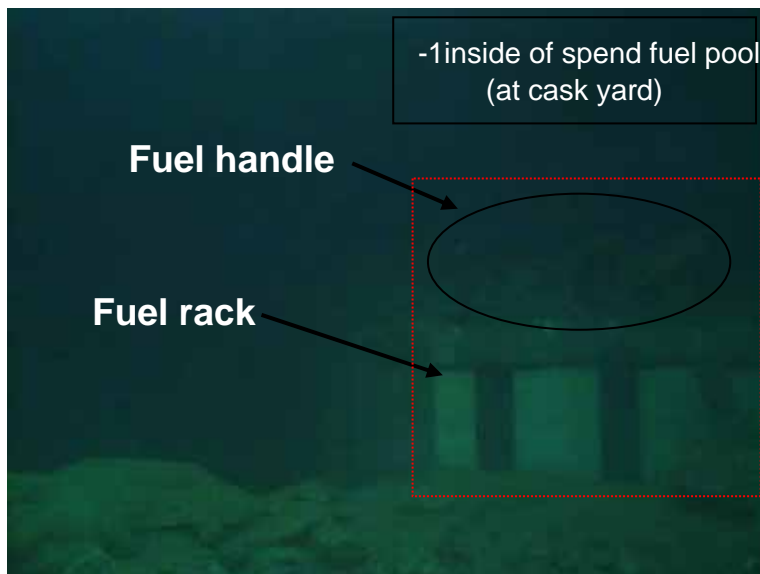
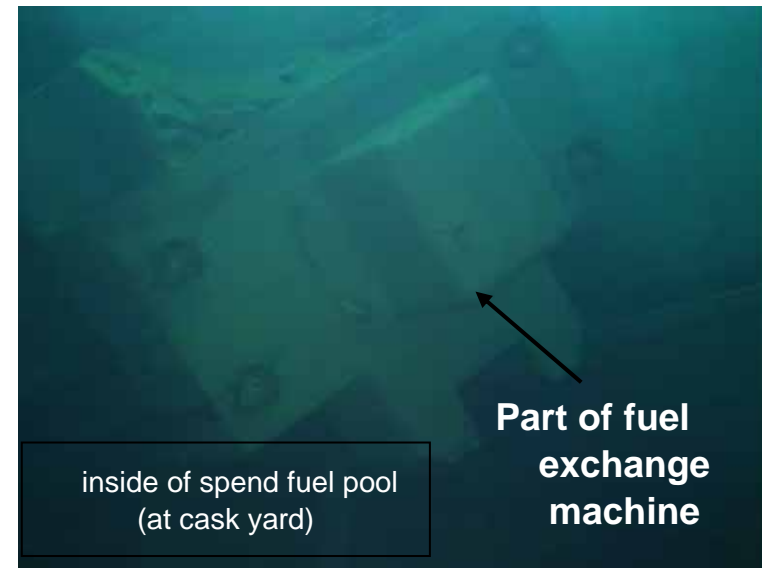
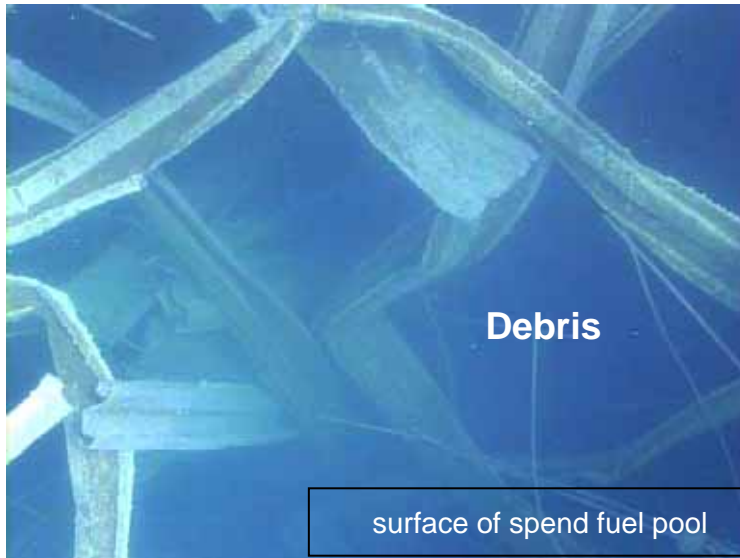


## Survey on the inside of Unit 3 Spent Fuel Pool for Removal of Debris , Fukushima Daiichi Nuclear Power Station

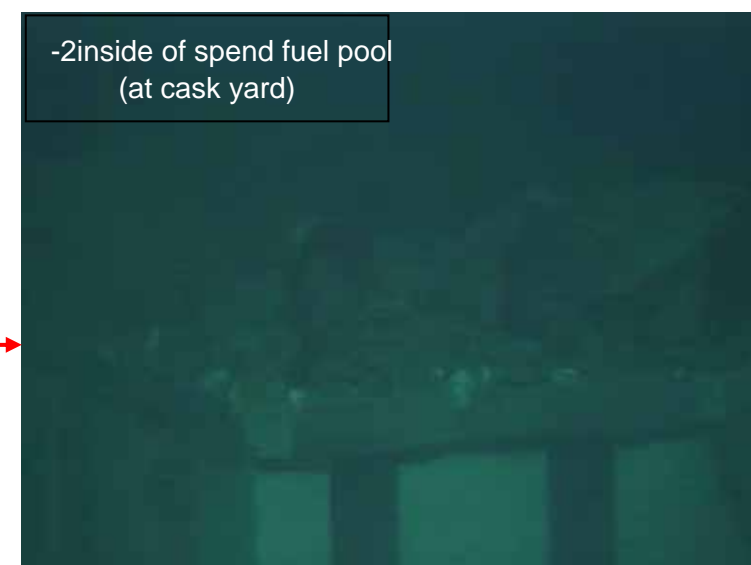


- The survey is conducted with a fixed-type underwater camera hung from the upper side of spend fuel pool using a crawler lane. The camera is operated by remote control unit from Seismic Isolated Building.

# Survey on the inside of Unit 3 Spent Fuel Pool for Removal of Debris , Fukushima Daiichi Nuclear Power Station



Zoom



Recorded on April 13, 2012  
by TEPCO