

Nuclide Analysis Results of Fish and Shellfish (The Ocean Area Within 20km Radius of Fukushima Daiichi NPS) <1/4>

(Data summarized on May 25)

Sample name (Region)	Place of sampling (Place No.)	Date of sampling	Radioactivity density[Bq/kg(raw)] (half life)		
			Cs-134 (approx. 2 years)	Cs-137 (approx. 30 years)	Total
Greenling (Muscle)	Around 1km offshore of Otagawa (T-S1)	May 9, 2012	110	160	270
Northern dogfish (Muscle)	Around 1km offshore of Otagawa (T-S1)	May 9, 2012	13	15	28
Blue crab (Whole)	Around 1km offshore of Otagawa (T-S1)	May 9, 2012	ND	ND	ND
Schlegel's black rockfish (Muscle)	Around 1km offshore of Otagawa (T-S1)	May 9, 2012	210	320	530
Sea raven (Muscle)	Around 1km offshore of Otagawa (T-S1)	May 9, 2012	63	88	151
Common Skete (Muscle)	Around 1km offshore of Otagawa (T-S1)	May 9, 2012	70	100	170
Pennahia argentata (Muscle)	Around 1km offshore of Otagawa (T-S1)	May 9, 2012	9.7	11	20.7
Starry flounder (Muscle)	Around 1km offshore of Otagawa (T-S1)	May 9, 2012	340	470	810
Ovalipes punctatus (Whole)	Around 1km offshore of Otagawa (T-S1)	May 9, 2012	ND	ND	ND
Flatfish (Muscle)	Around 1km offshore of Otagawa (T-S1)	May 9, 2012	70	94	164

* When the measurement value is below the detection limit, "ND" is marked. The detection limits are as follows.

Cs-134: approx. 6.9Bq/kg (raw), Cs-137: approx. 5.0Bq/kg (raw)

Please note that these nuclides are sometimes detected even when they are below the limits, contingent on the detector or samples.

* Standard Value (after April 1, 2012) Cs-134+Cs-137: 100Bq/kg

* Analyzed by Tokyo Electric Power Environmental Engineering Co., Inc.

Nuclide Analysis Results of Fish and Shellfish
(The Ocean Area Within 20km Radius of Fukushima Daiichi NPS) <2/4>

(Data summarized on May 25)

Sample name (Region)	Place of sampling (Place No.)	Date of sampling	Radioactivity density[Bq/kg(raw)] (half life)		
			Cs-134 (approx. 2 years)	Cs-137 (approx. 30 years)	Total
Marbled sole (Muscle)	Around 1km offshore of Otagawa (T-S1)	May 9, 2012	29	39	68
Greenling (Muscle)	Around 3km offshore of Odaka Ward (T-S2)	May 9, 2012	94	130	224
Northern dogfish (Muscle)	Around 3km offshore of Odaka Ward (T-S2)	May 9, 2012	ND	8.0	8.0
Stone flounder (Muscle)	Around 3km offshore of Odaka Ward (T-S2)	May 9, 2012	170	220	390
Sebastes cheni (Muscle)	Around 3km offshore of Odaka Ward (T-S2)	May 9, 2012	360	540	900
Sea raven (Muscle)	Around 3km offshore of Odaka Ward (T-S2)	May 9, 2012	120	190	310
Common Skete (Muscle)	Around 3km offshore of Odaka Ward (T-S2)	May 9, 2012	86	110	196
Pennahia argentata (Muscle)	Around 3km offshore of Odaka Ward (T-S2)	May 9, 2012	13	25	38
Alaska pollack (Muscle)	Around 3km offshore of Odaka Ward (T-S2)	May 9, 2012	ND	ND	ND
Microstomus achne (Muscle)	Around 3km offshore of Odaka Ward (T-S2)	May 9, 2012	100	160	260

* When the measurement value is below the detection limit, "ND" is marked. The detection limits are as follows.

Cs-134: approx. 4.1Bq/kg (raw), Cs-137: approx. 4.3Bq/kg (raw)

Please note that these nuclides are sometimes detected even when they are below the limits, contingent on the detector or samples.

* Standard Value (after April 1, 2012) Cs-134+Cs-137: 100Bq/kg

* Analyzed by Tokyo Electric Power Environmental Engineering Co., Inc.

Nuclide Analysis Results of Fish and Shellfish
(The Ocean Area Within 20km Radius of Fukushima Daiichi NPS) <3/4>

(Data summarized on May 25)

Sample name (Region)	Place of sampling (Place No.)	Date of sampling	Radioactivity density[Bq/kg(raw)] (half life)		
			Cs-134 (approx. 2 years)	Cs-137 (approx. 30 years)	Total
Ovalipes punctatus (Whole)	Around 3km offshore of Odaka Ward (T-S2)	May 9, 2012	ND	ND	ND
Flatfish (Muscle)	Around 3km offshore of Odaka Ward (T-S2)	May 9, 2012	490	700	1190
Marbled sole (Muscle)	Around 3km offshore of Odaka Ward (T-S2)	May 9, 2012	75	100	175
Octopus (Enteroctopus) dofleini (Muscle)	Around 3km offshore of Odaka Ward (T-S2)	May 9, 2012	ND	5.1	5.1
Greenling (Muscle)	Around 10km offshore of Fukushima Daiichi NPS (T-B3)	May 10, 2012	110	150	260
Lepidotrigla microptera (Muscle)	Around 10km offshore of Fukushima Daiichi NPS (T-B3)	May 10, 2012	11	19	30
Common Skete (Muscle)	Around 10km offshore of Fukushima Daiichi NPS (T-B3)	May 10, 2012	130	190	320
Shark-skin flounder (Muscle)	Around 10km offshore of Fukushima Daiichi NPS (T-B3)	May 10, 2012	ND	ND	ND
Loliginid (Whole)	Around 10km offshore of Fukushima Daiichi NPS (T-B3)	May 10, 2012	ND	ND	ND
Microstomus achne (Muscle)	Around 10km offshore of Fukushima Daiichi NPS (T-B3)	May 10, 2012	25	38	63

* When the measurement value is below the detection limit, "ND" is marked. The detection limits are as follows.

Cs-134: approx. 5.7Bq/kg (raw), Cs-137: approx. 4.9Bq/kg (raw)

Please note that these nuclides are sometimes detected even when they are below the limits, contingent on the detector or samples.

* Standard Value (after April 1, 2012) Cs-134+Cs-137: 100Bq/kg

* Analyzed by Tokyo Electric Power Environmental Engineering Co., Inc.

Nuclide Analysis Results of Fish and Shellfish
(The Ocean Area Within 20km Radius of Fukushima Daiichi NPS) <4/4>

(Data summarized on May 25)

Sample name (Region)	Place of sampling (Place No.)	Date of sampling	Radioactivity density[Bq/kg(raw)] (half life)		
			Cs-134 (approx. 2 years)	Cs-137 (approx. 30 years)	Total
Flatfish (Muscle)	Around 10km offshore of Fukushima Daiichi NPS (T-B3)	May 10, 2012	66	100	166
Sea robin (Muscle)	Around 10km offshore of Fukushima Daiichi NPS (T-B3)	May 10, 2012	6.9	13	19.9
Common Japanese conger (Muscle)	Around 10km offshore of Fukushima Daiichi NPS (T-B3)	May 10, 2012	27	39	66
Marbled sole (Muscle)	Around 10km offshore of Fukushima Daiichi NPS (T-B3)	May 10, 2012	28	51	79
Pacific cod (Muscle)	Around 10km offshore of Fukushima Daiichi NPS (T-B3)	May 10, 2012	19	31	50
Octopus (Enteroctopus dofleini) (Muscle)	Around 10km offshore of Fukushima Daiichi NPS (T-B3)	May 10, 2012	ND	ND	ND
Roundnose flounder (Muscle)	Around 10km offshore of Fukushima Daiichi NPS (T-B3)	May 10, 2012	7.1	17	24.1
Loligo bleekeri (Whole)	Around 10km offshore of Fukushima Daiichi NPS (T-B3)	May 10, 2012	ND	ND	ND

* When the measurement value is below the detection limit, "ND" is marked. The detection limits are as follows.

Cs-134: approx. 4.5Bq/kg (raw), Cs-137: approx. 4.9Bq/kg (raw)

Please note that these nuclides are sometimes detected even when they are below the limits, contingent on the detector or samples.

* Standard Value (after April 1, 2012) Cs-134+Cs-137: 100Bq/kg

* Analyzed by Tokyo Electric Power Environmental Engineering Co., Inc.

Sample Photos of Fish and Shellfish (May 9-10, 2012)

Sampling locations: Around 3km Offshore of Ohta River (T-S1), Around 3km Offshore of Odaka Ward (T-S2), Around 10km Offshore of 1F (T-B3)

1. Greenling



2. Northern dogfish



3. Blue crab



4. Schlegel's black rockfish



5. Sea raven



6. Common Skete



7. Pennahia argentata



8. Starry flounder



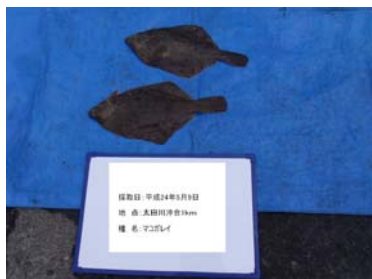
9. Ovalipes punctatus



10. Flatfish



11. Marbled sole



12. Stone flounder



13. Sebastes cheni



14. Alaska pollack



15. Microstomus achne



Sample Photos of Fish and Shellfish (May 9-10, 2012)

Sampling locations: Around 3km Offshore of Ohta River (T-S1), Around 3km Offshore of Odaka Ward (T-S2), Around 10km Offshore of 1F (T-B3)

16. Octopus (*Enteroctopus dofleini*)



17. *Lepidotrigla microptera*



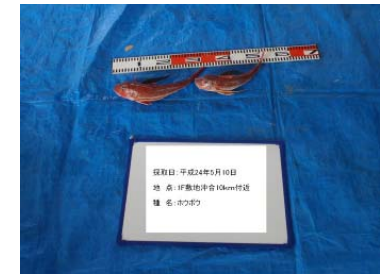
18. Shark-skin flounder



19. Loliginid



20. Sea robin



21. Common Japanese conger



22. Pacific cod



23. Roundnose flounder



24. *Loligo bleekeri*

