

< Reference >
June 26, 2012

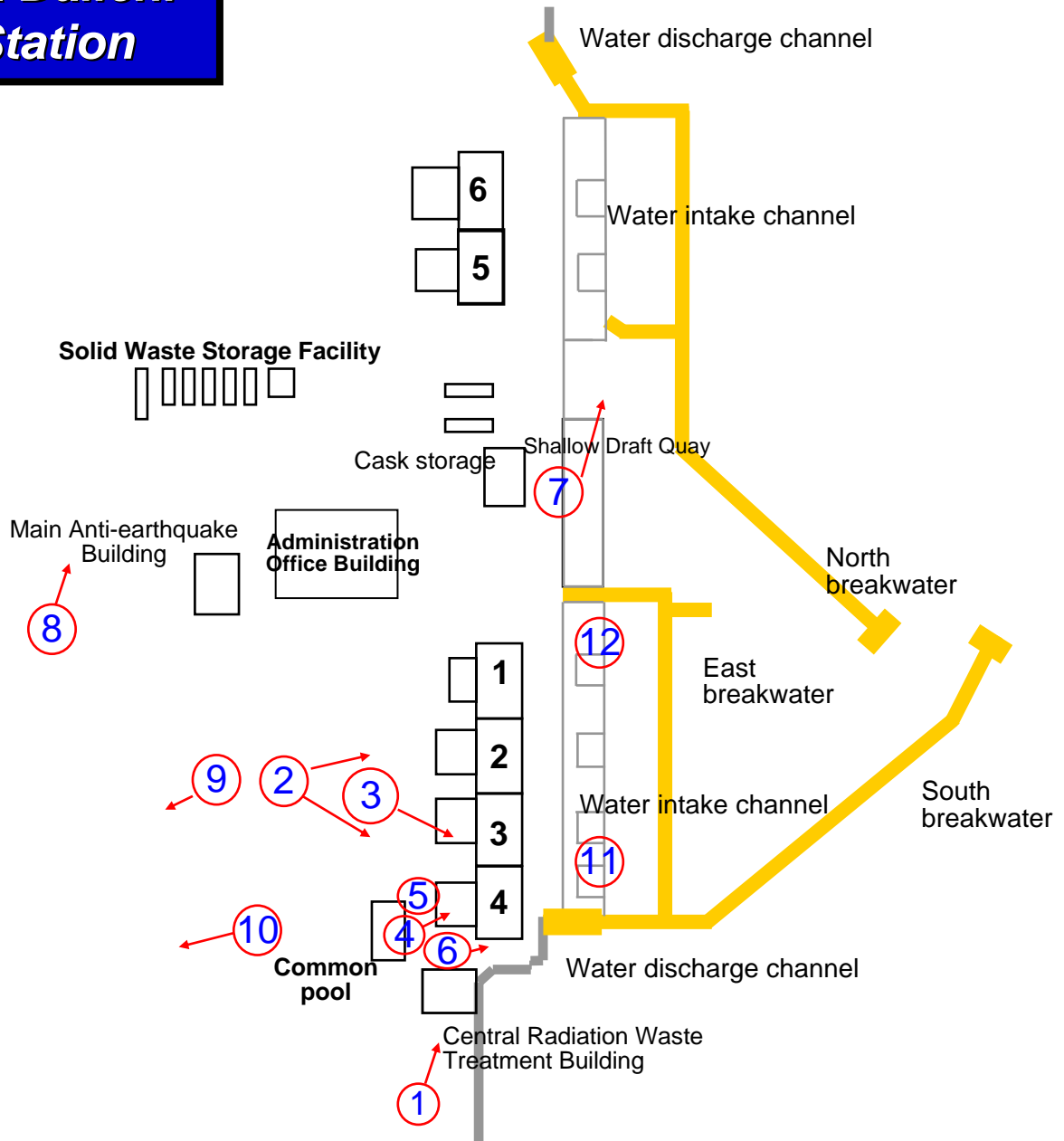
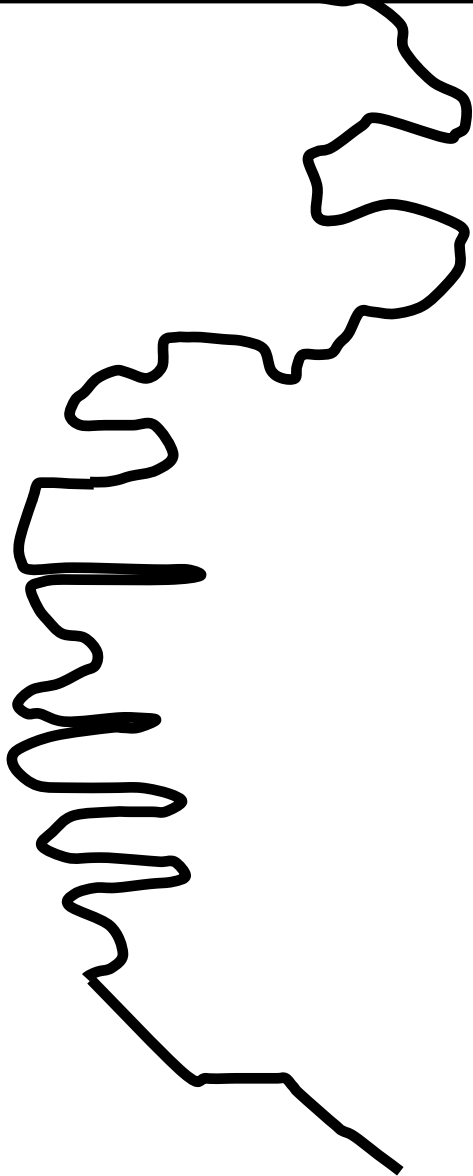
Tokyo Electric Power Company

Corrected

We replaced the photo for physical protection of nuclear materials. (September 4, 2012)

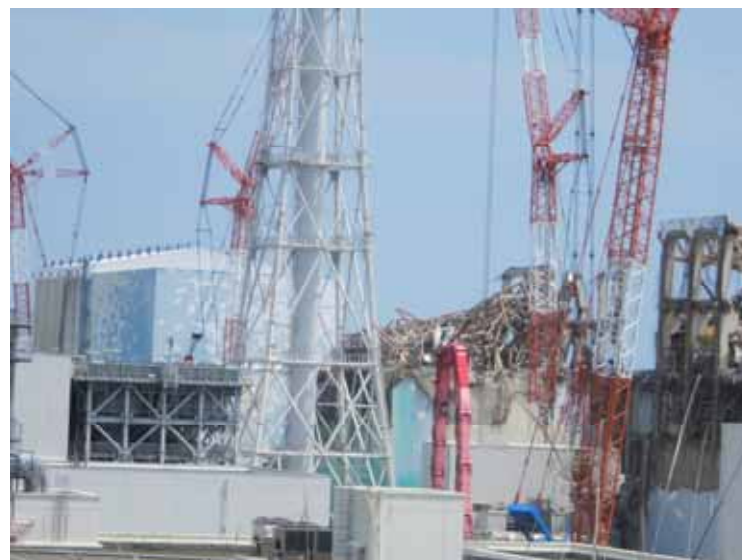
Current Condition of Fukushima Daiichi Nuclear Power Station

Map of Fukushima Daiichi Nuclear Power Station





-1 Appearance of Unit 2-4 (View from the southern hill)
Photo taken by a TEPCO employee on June 18, 2012



-2 Appearance of Unit 3 (View from the southern hill)
Photo taken by a TEPCO employee on June 18, 2012



-3 Appearance of Unit 4 (View from the southern hill):
Lifting heavy machinery down from the operation floor
Photo taken by a TEPCO employee on June 18, 2012



-4 Appearance of Unit 4 (View from the southern hill):
Lifting heavy machinery down from the operation floor
Photo taken by a TEPCO employee on June 18, 2012



-1 Appearance of Unit 3-4

(View from the hill on the mountain side between Unit 2 and 3)

Photo taken by a TEPCO employee on June 18, 2012



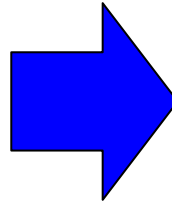
-2 Appearance of Unit 2

(View from the hill on the mountain side between Unit 2 and 3)

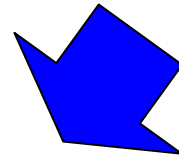
Photo taken by a TEPCO employee on June 18, 2012



-1 Upper part of Unit 3 Reactor Building (Before debris removal)
Photo taken by a TEPCO employee on September 15, 2011



-2 Upper part of Unit 3 Reactor Building
Photo taken by a TEPCO employee on January 10, 2012

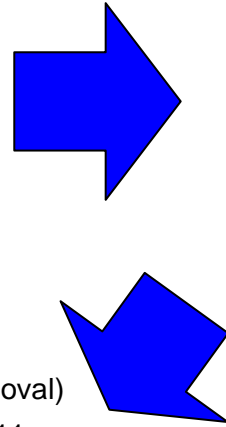


-3 Upper part of Unit 3 Reactor Building
Photo taken by a TEPCO employee on June 18, 2012

Since last September, the pillars hanging down (left on photo -1) have been taken apart and removed along with debris removal, and a platform was installed (Photo -3)



-1 Upper part of Unit 4 Reactor Building (Before debris removal)
Photo taken by a TEPCO employee on September 22, 2011



-2 Upper part of Unit 4 Reactor Building (During debris removal)
Photo taken by a TEPCO employee on January 5, 2012



-3 Unit 4 Reactor Building
Photo taken by a TEPCO employee on June 18, 2012

Since last September, the panels and pillars in the upper part of the Reactor Building have been taken apart and removed.



Unit 4 Spent Fuel Pool protection platform
Photo taken by a TEPCO employee on June 7, 2012



Lifting up the protection platform
(As announced on June 15, 2012)



Platform installation completed
(As announced on June 15, 2012)



-1 Unit 4 south side foundation improvement work:
Foundation improvement equipment
Photo taken by a TEPCO employee on June 7, 2012



-2 Unit 4 south side foundation improvement work: Cement silo
Photo taken by a TEPCO employee on June 7, 2012



-1 Marine soil covering work:
Solidification agent mixer ship (Left), Silo ship (Right)
Photo taken by a TEPCO employee on June 7, 2012



-2 Marine soil covering work: Solidified soil placing ship
Photo taken by a TEPCO employee on June 7, 2012



-1 Multi-nuclide Removal Facility construction site (Full-view)
Photo taken by a TEPCO employee on June 11, 2012



-2 Multi-nuclide Removal Facility construction site (Full-view):
Foundation improvement work
Photo taken by a TEPCO employee on June 11, 2012



-1 Underground water storage tank installation
Photo taken by a TEPCO employee on June 18, 2012



-2 Underground water storage tank installation
Photo taken by a TEPCO employee on June 18, 2012



-1 PE pipe installation condition
Photo taken by a TEPCO employee on June 18, 2012



-2 PE pipe installation condition
Photo taken by a TEPCO employee on June 18, 2012



Impermeable wall piling ship
Photo taken by a TEPCO employee on June 18, 2012



Impermeable wall piling ship
Photo taken by a TEPCO employee on June 18, 2012