

Progress Status of Covering the Marine Soil of the Port of Fukushima Daiichi Nuclear Power Station

< Reference >

July 18, 2012

Tokyo Electric Power Company

[Unit 1-4]

March 14: Started working on the first covering layer

March 29: The first covering layer completed

April 5: Started working on the second covering layer

May 11: The second covering layer completed

[Unit 5-6]

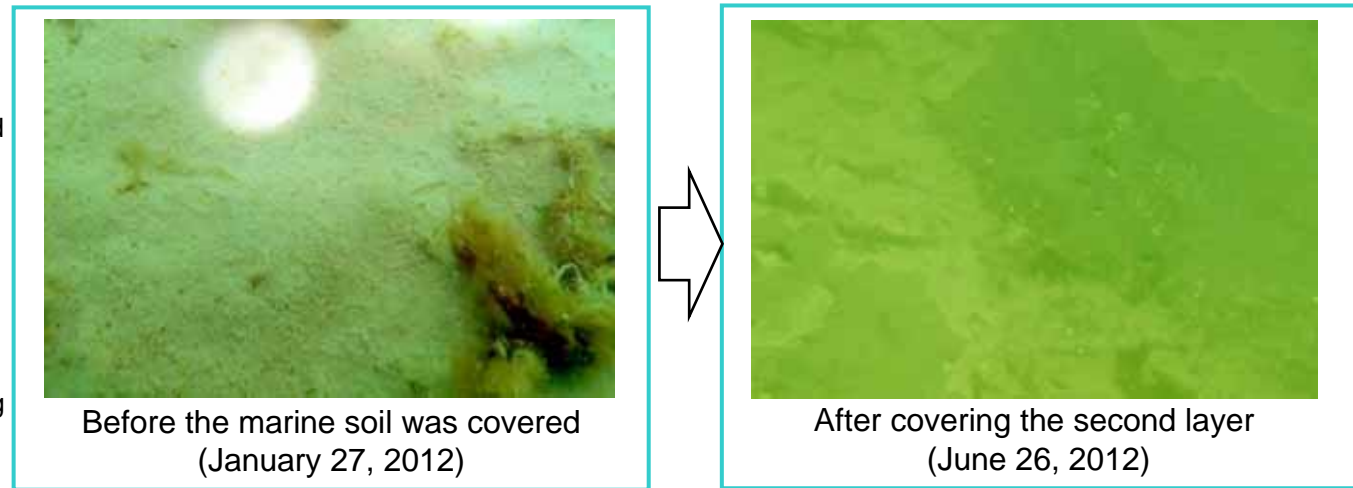
May 16: Silt fence installation

May 17: Started working on the first covering layer

May 29: The first covering layer completed

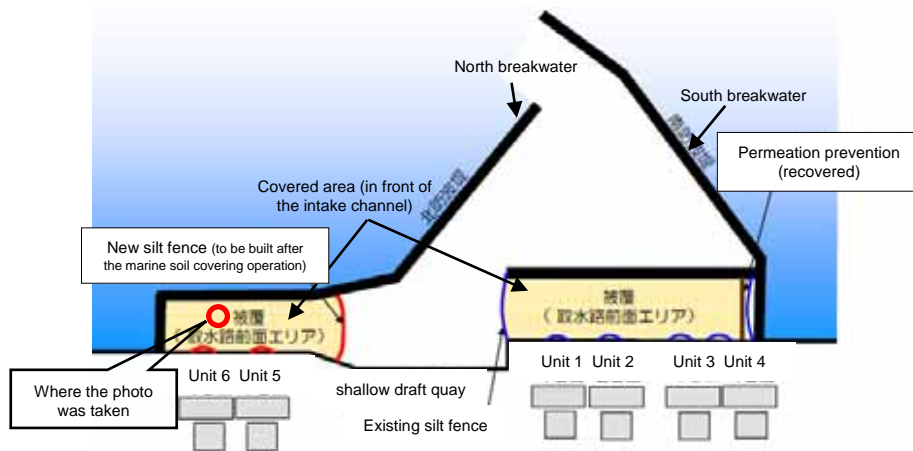
May 31: Started working on the second covering layer

July 5: The second covering layer completed



Before the marine soil was covered
(January 27, 2012)

After covering the second layer
(June 26, 2012)



Progress

	Unit	Unit 1-4	Unit 5-6	Total
Area covered	m ²	34,000	38,600	72,600
Placement amount (1st layer)	m ³	6,100	7,700	13,800
Placement amount (2nd layer)	m ³	9,500	9,700	19,200
1st layer average thickness	cm	Approx. 25	Approx. 25	
2nd layer average thickness	cm	Approx. 25	Approx. 30	

*The average thickness is the average of the measurement results.

The first layer is covering the marine soil surface properly.
The second layer is covering the first layer, and the required thickness is maintained.