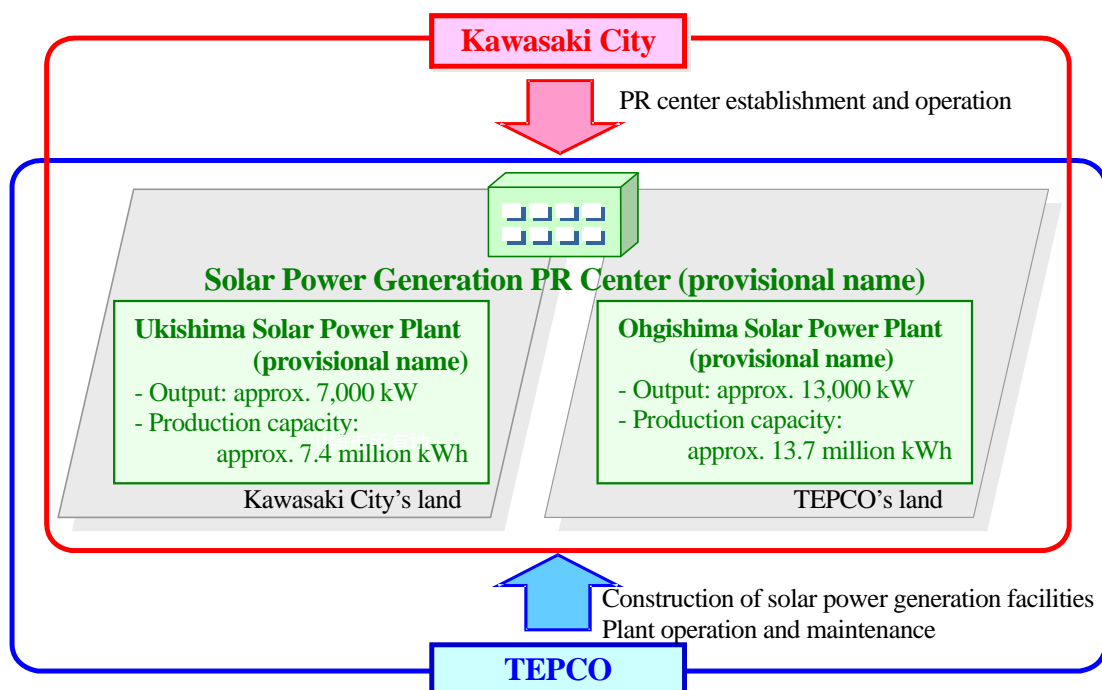


## Outline of the Mega Solar Power Generation Project in the Kawasaki Waterfront District

### 1. Plan overview



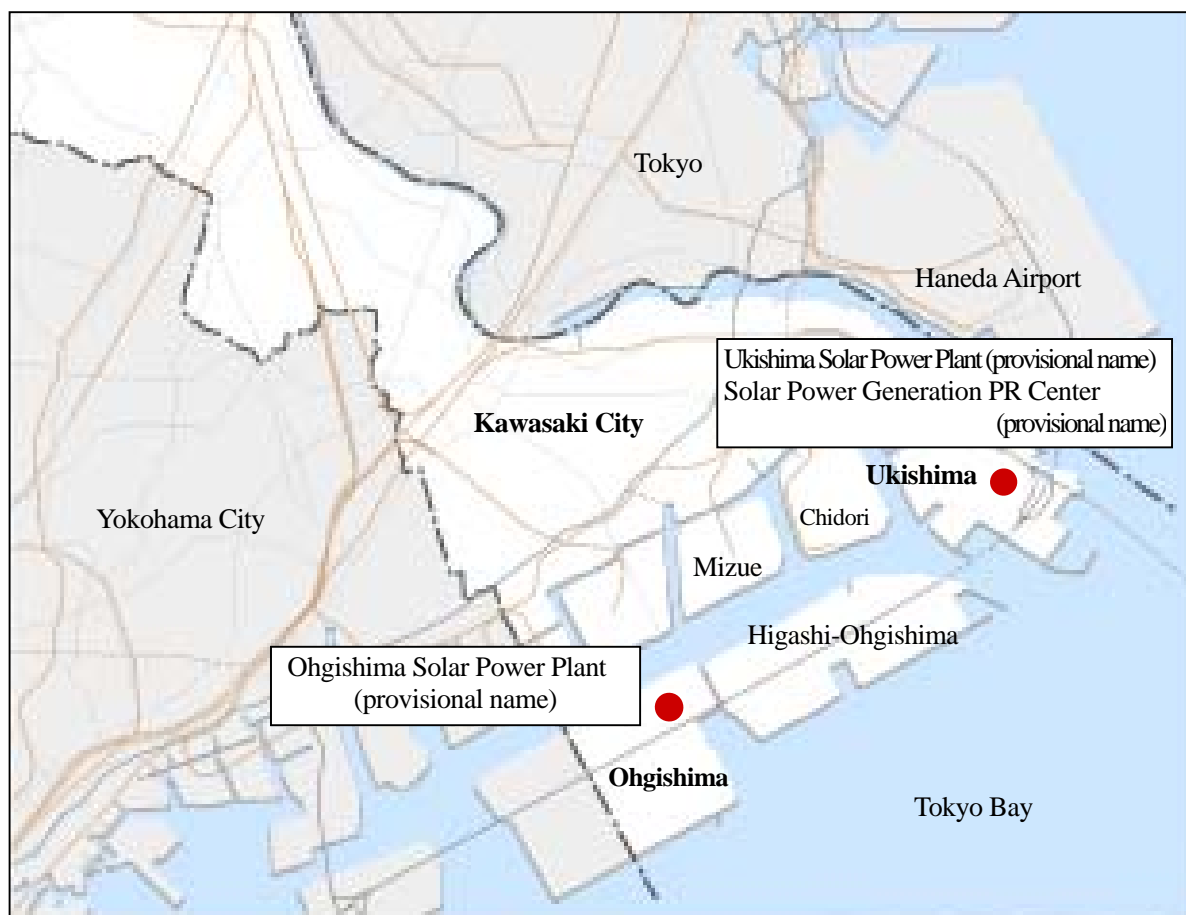
### 2. Solar power generation facility overview

Plant name		Ukishima Solar Power Plant (provisional name)	Ohgishima Solar Power Plant (provisional name)
Location		Ukishima-cho, Kawasaki-ku, Kawasaki, Kanagawa	Ohgishima, Kawasaki-ku, Kawasaki, Kanagawa
Specifications	Solar cell output	Approx. 7,000 kW	Approx. 13,000 kW
	Estimated annual power production	Approx. 7.4 million kWh	Approx. 13.7 million kWh
	Estimated CO <sub>2</sub> emission reduction	Approx. 3,100 t	Approx. 5,800 t
	Land area	Approx. 11 ha (owned by Kawasaki)	Approx. 23 ha (owned by TEPCO)
	Solar panel installation area	Approx 10 ha	Approx 20 ha
Schedule	Start of construction	FY 2009 (slated)	FY 2009 (slated)
	Start of operation	FY 2011 (slated)	FY 2011 (slated)

### 3. PR Center overview

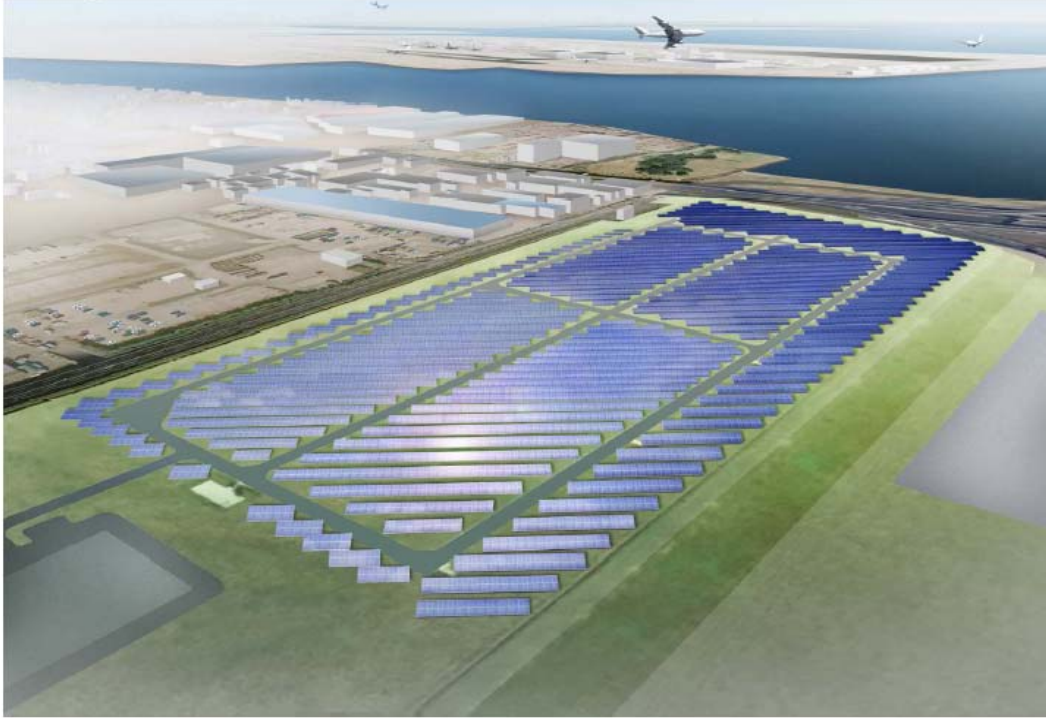
Facility name	Solar Power Generation PR Center (provisional name)
Operator	Kawasaki City
Location	Ukishima-cho, Kawasaki-ku, Kawasaki, Kanagawa (within the Ukishima Incineration Plant)
Opening	FY 2011 (slated)
Description	A PR facility operated to promote solar power generation and provide hands-on experience of related technologies, to be built by remodeling the Public Waste Management Learning Room in the Ukishima Incineration Plant.

### 4. Map



## 5. Artist's renderings

(1) Ukishima Solar Power Plant (provisional name)



(2) Ohgishima Solar Power Plant (provisional name)

