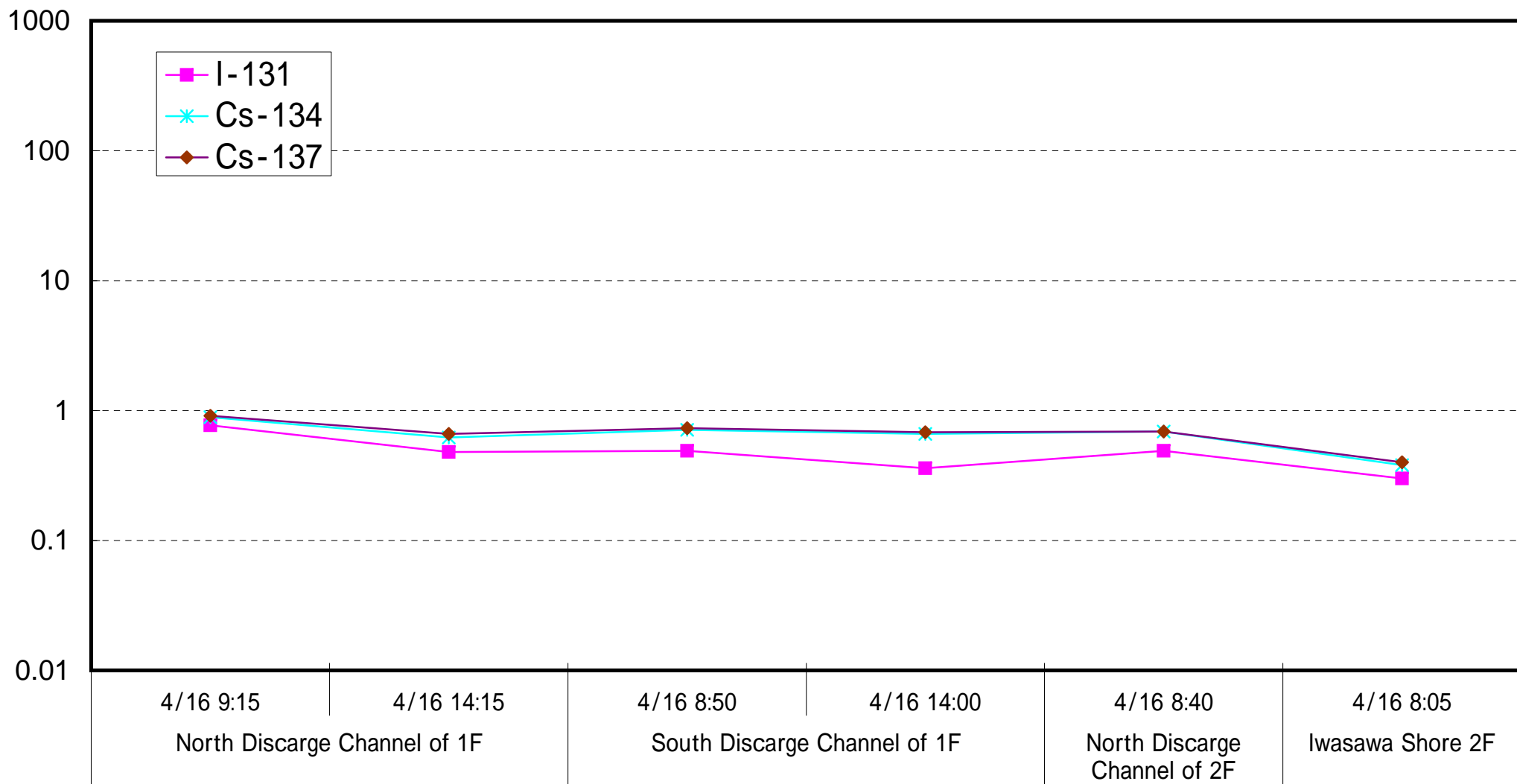
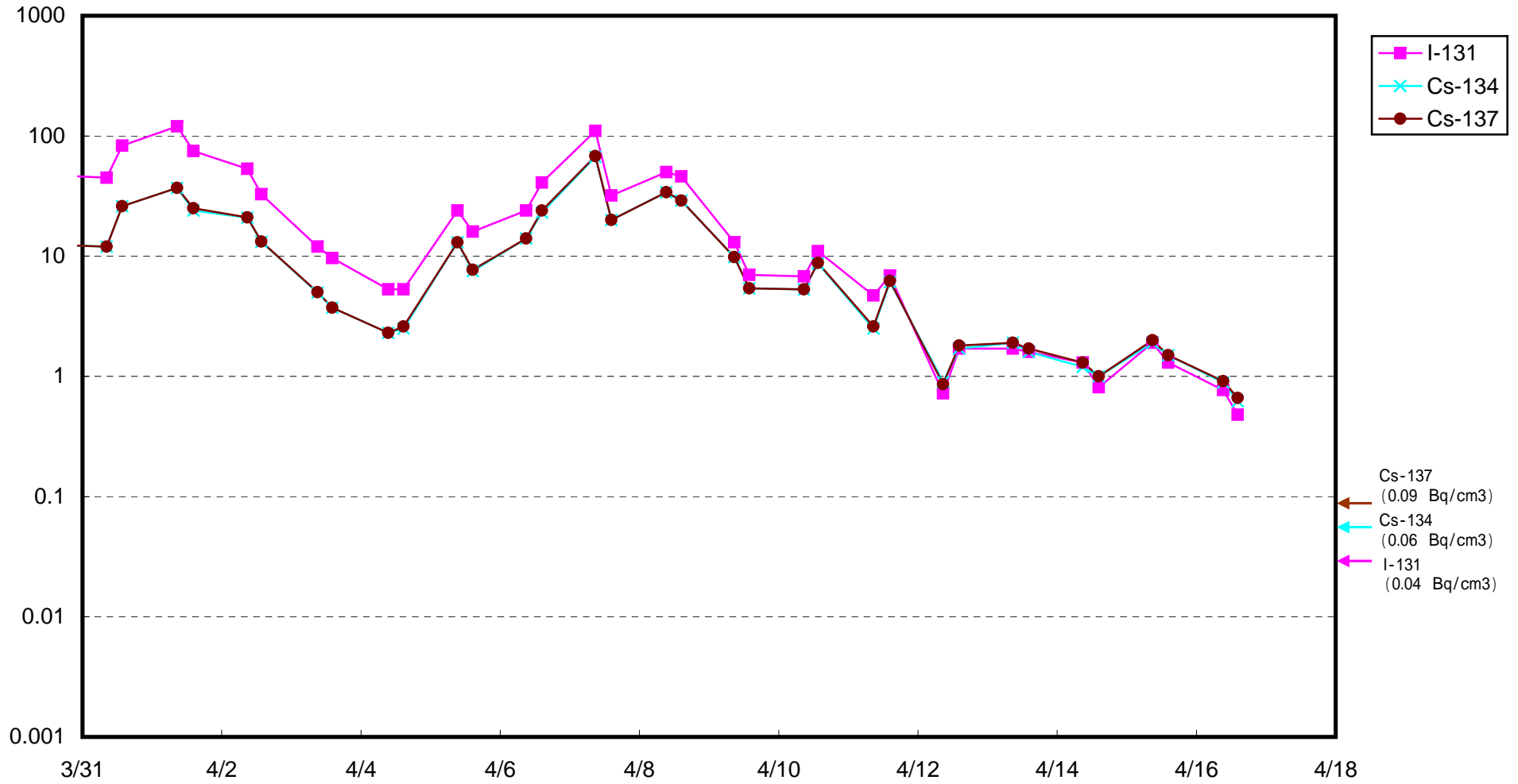


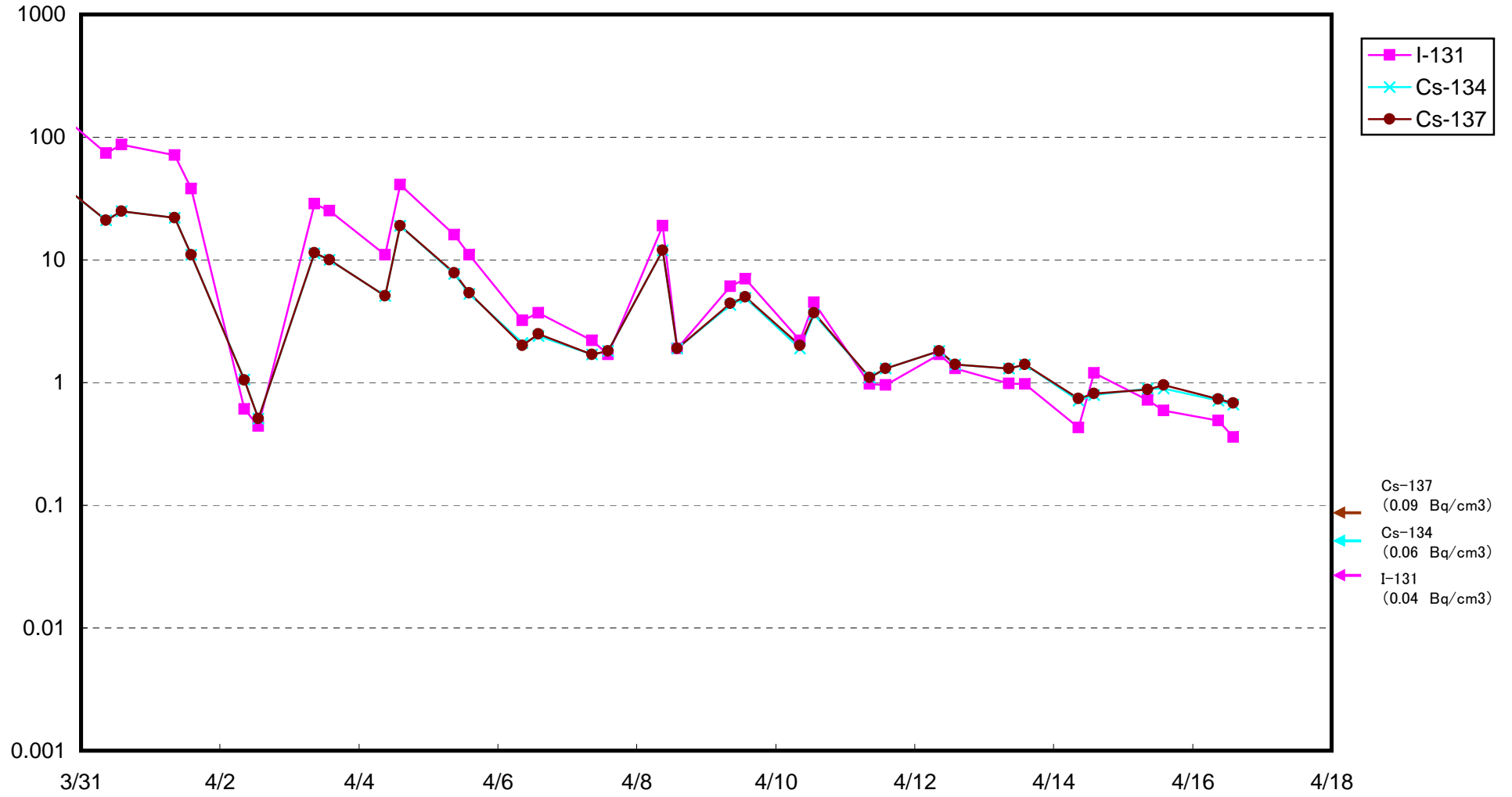
Radioactivity Density of Seawater (B q / c m3)



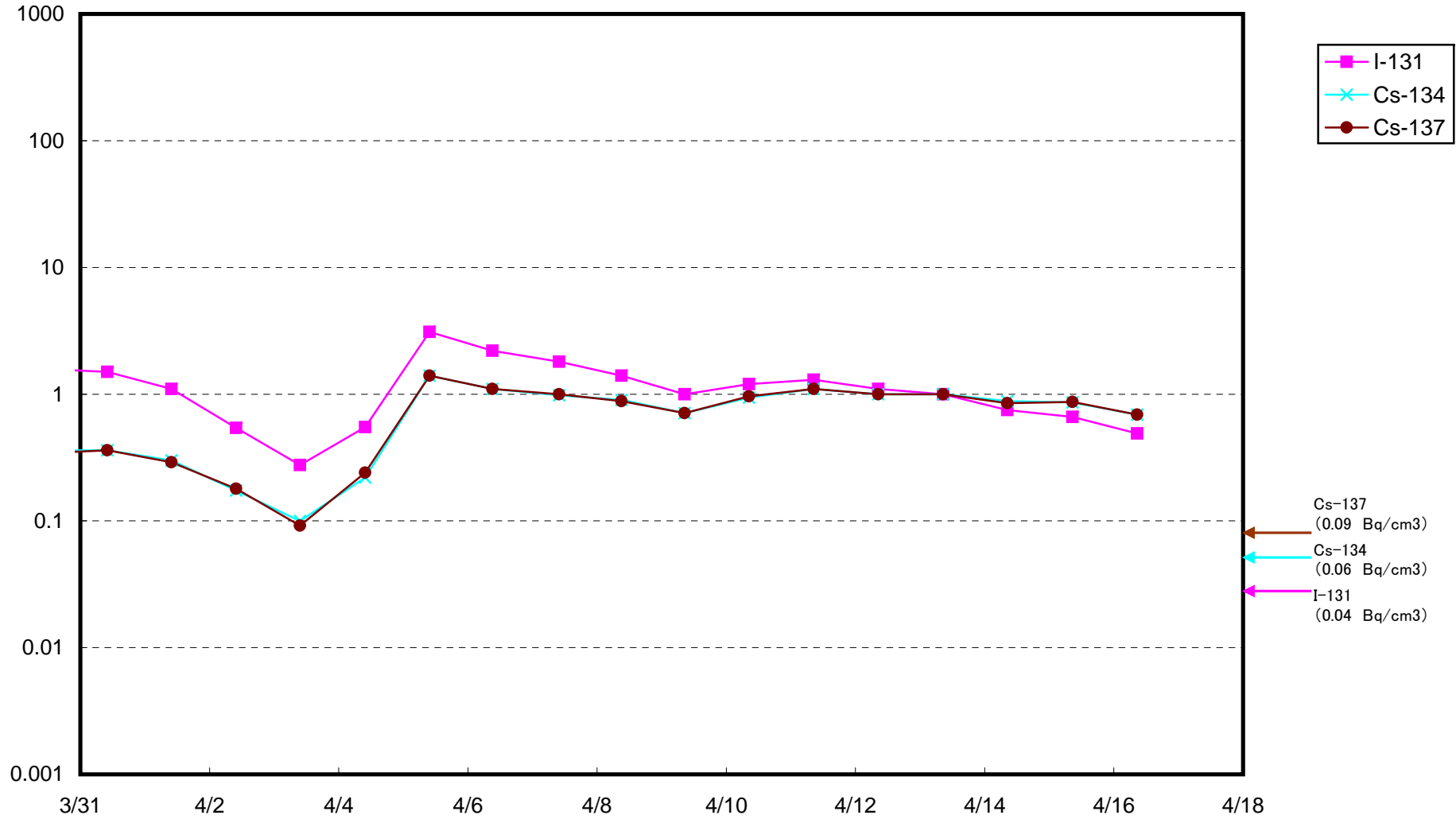
Radioactivity Density of Seawater at North of 1F5-6 Discharge Channel (approx. 30m north of 5-6 discharge channel) (Bq / cm³)



Radioactivity Density of Seawater at South Discharge Channel of 1F(Bq/cm³)



Radioactivity Density of Seawater at North Discharge Channel of 2F(Bq/cm³)



Radioactivity Density of Seawater at North Discharge Channel of 2F (Bq/cm³)

