

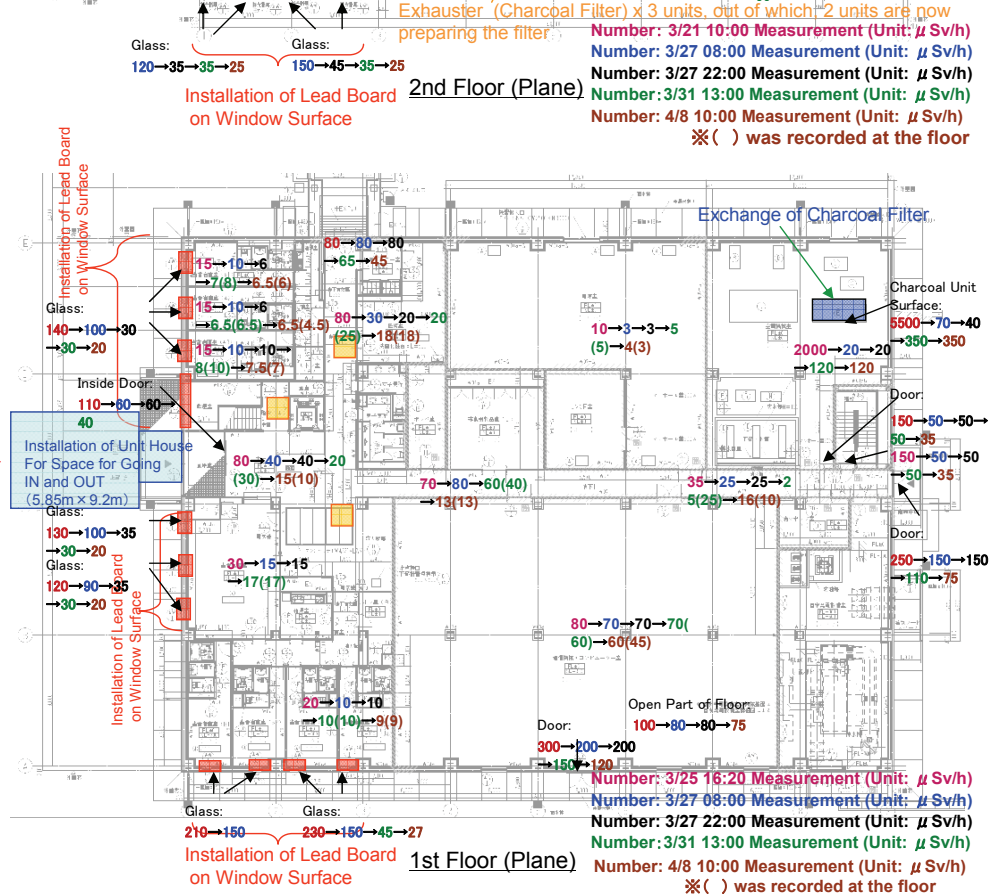
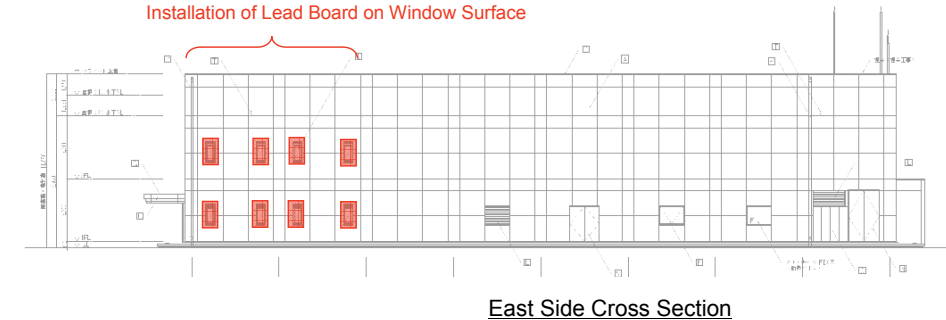
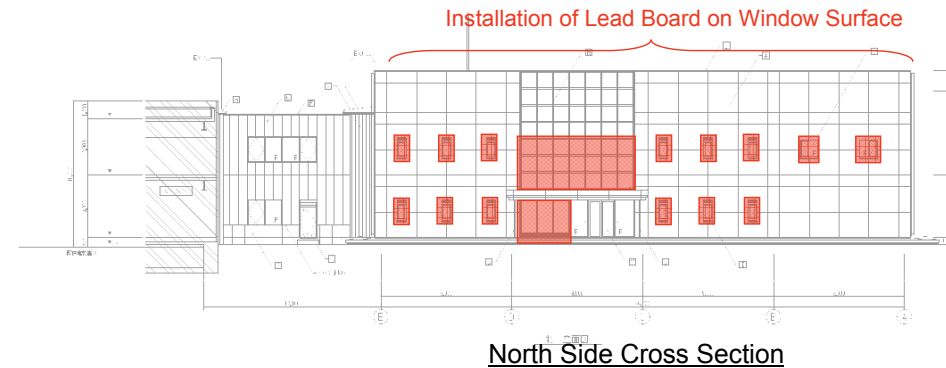
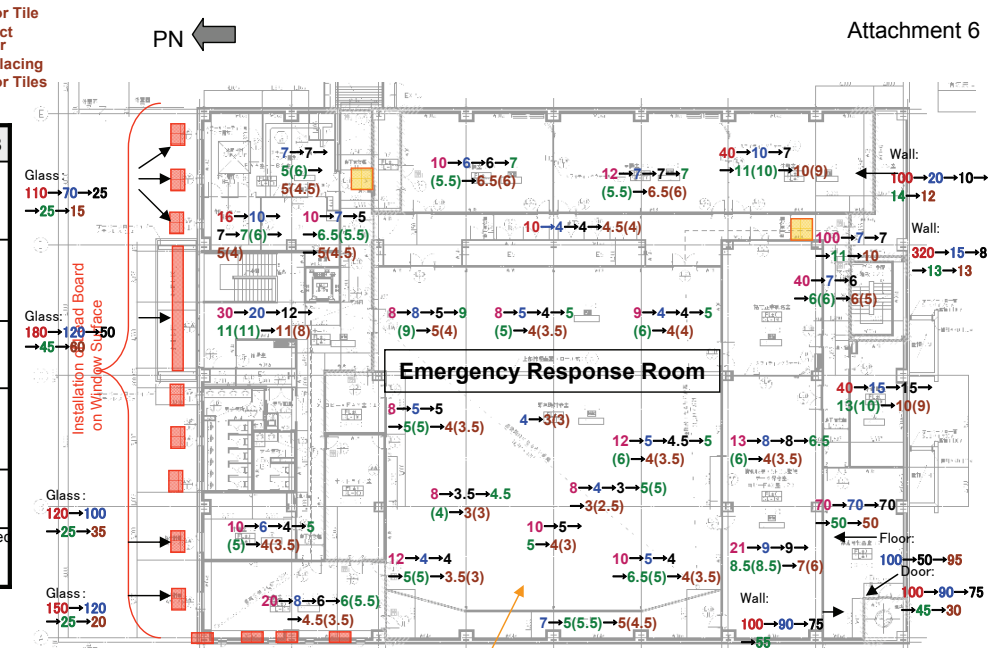
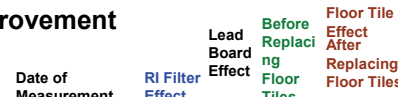
Overview and Effects of Countermeasures for Environment Improvement In the Main Anti-Earthquake Building of Fukushima Daiichi NPS

Protection of Pollution and Reduction of Radioactive Volume in the Building

Work Contents	Objective	Support of the HQ	Date of Measurement						
			3/25	26	27	28	4/1	4/8	
① Installation of Unit House for Space for Going IN and OUT (Fire proofing sheet, charcoal filter AC 2 units)	Enlargement of the Space		Completed						
② Exchange of Permanent Charcoal Filter	Removal of Polluted Substances	Procurement of the Filters (every 2 weeks)	Completed						
③ Installation of Floor Sheet for Main Passages	Protection of Diffusion of Polluted Substances				Replacing by Each Group				
④ Installation of Lead Board on Window Surface	Reduction of Radioactive Level inside the Building	Work Planning, Procurement and Supervision	Completed						
⑤ Installation of Exhauster with Charcoal Filter (Cable Installation)	Removal of Polluted Substances	Procurement and Arrangement, etc.	Completed						
⑥ Floor P Tiles (Tile Carpet→P Tile)※1	Reduction of Radioactive Level inside the Building	4/1~4/8 Supervision during Night						Completed	

Other Improvement Work in the Building

Work Contents	Objective
⑦ Service of Clean Water and Semi-Clean Water	Provision of Life Water
⑧ Recovery of Purification Tank and Sewage Tank	Maintenance of Sanitary



PN ←