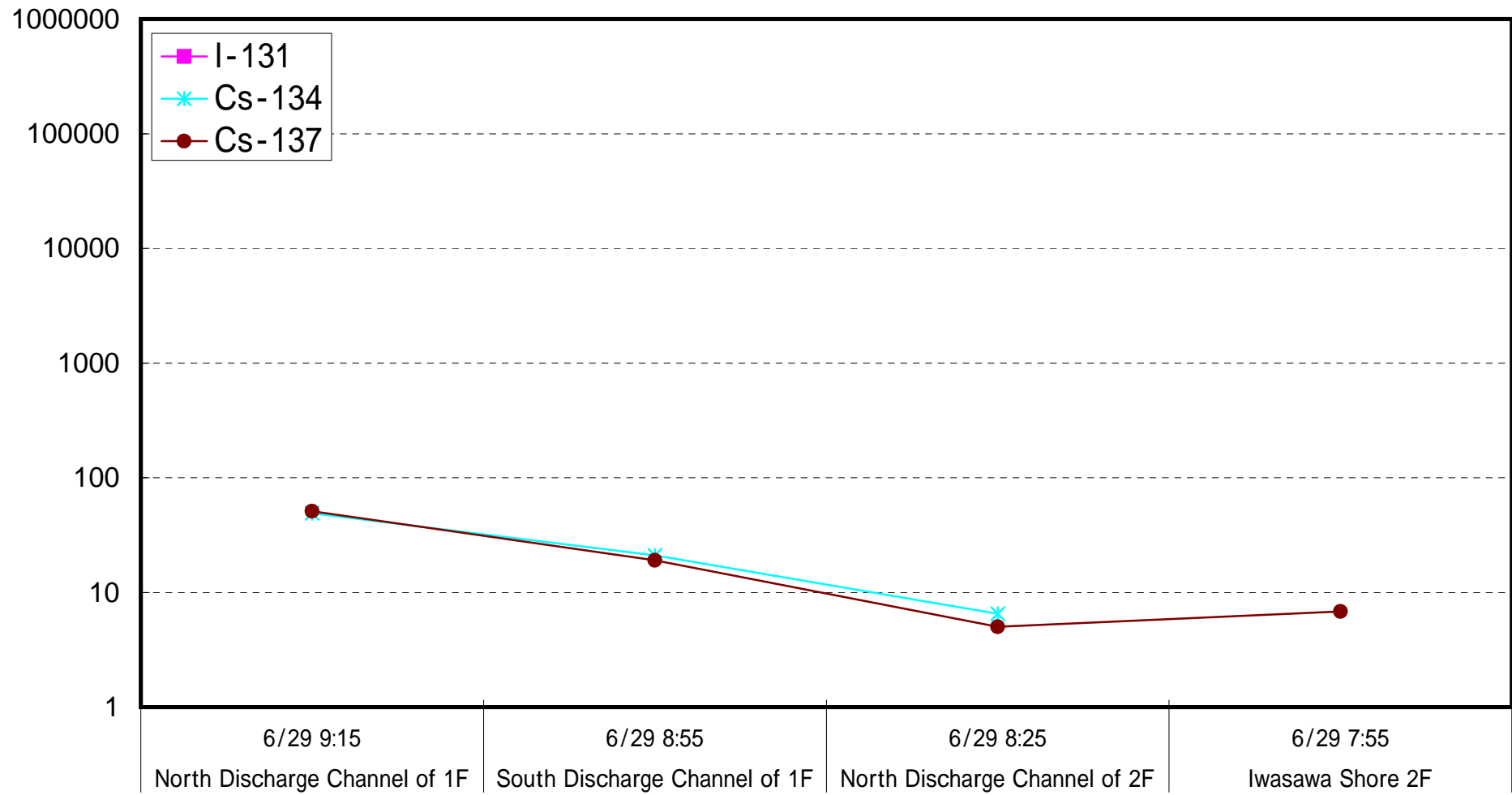
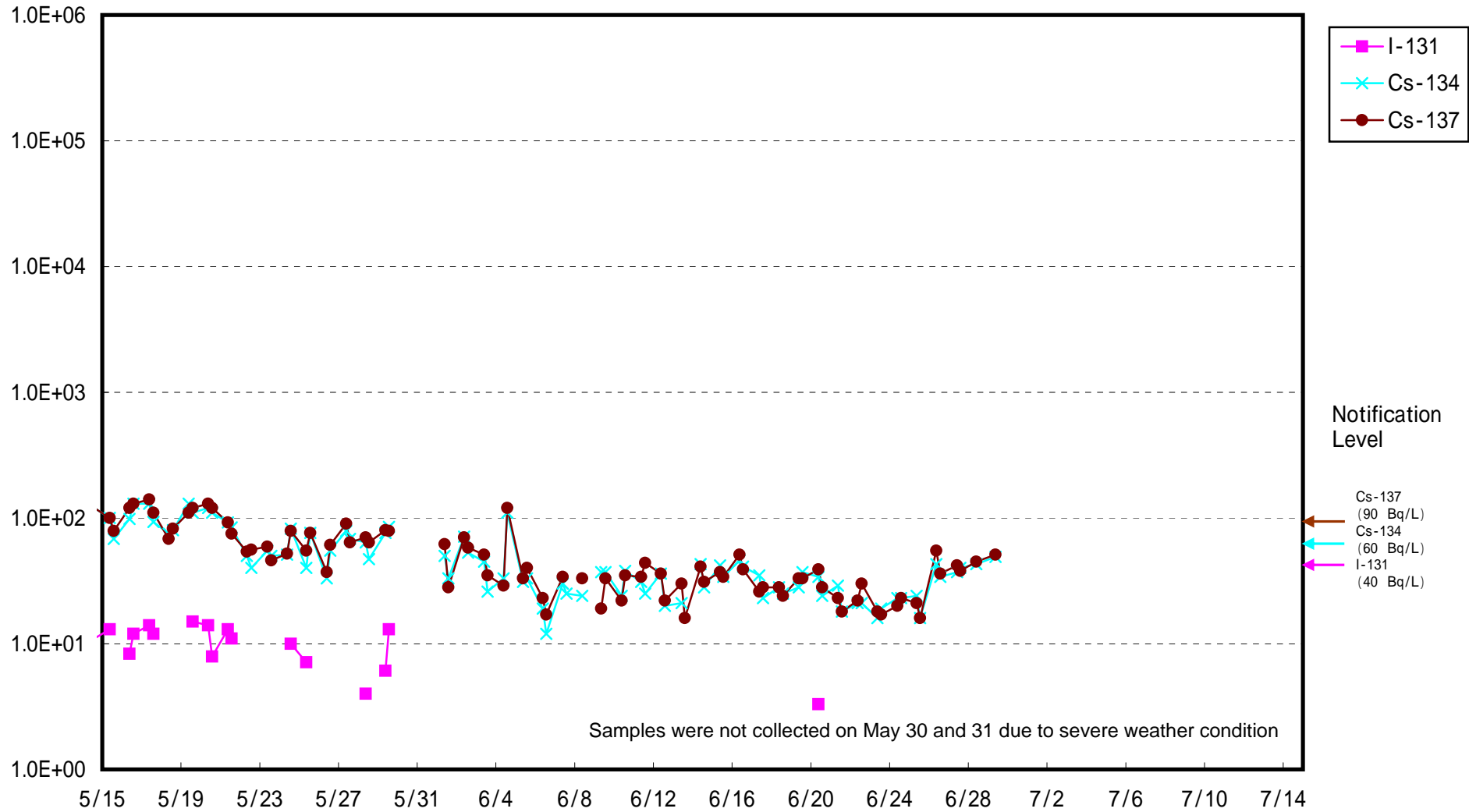


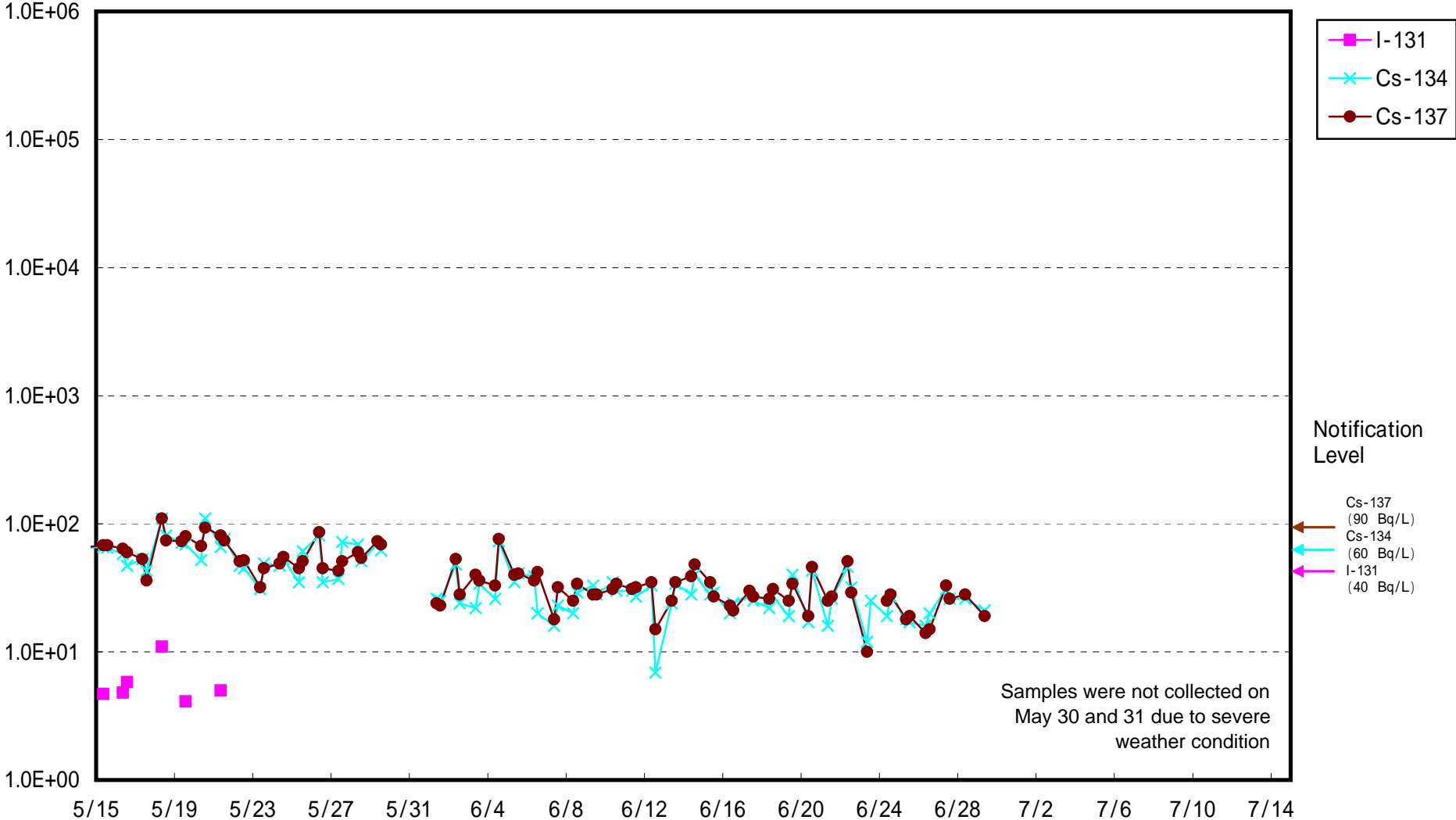
Radioactivity Density of Seawater (Bq/L)



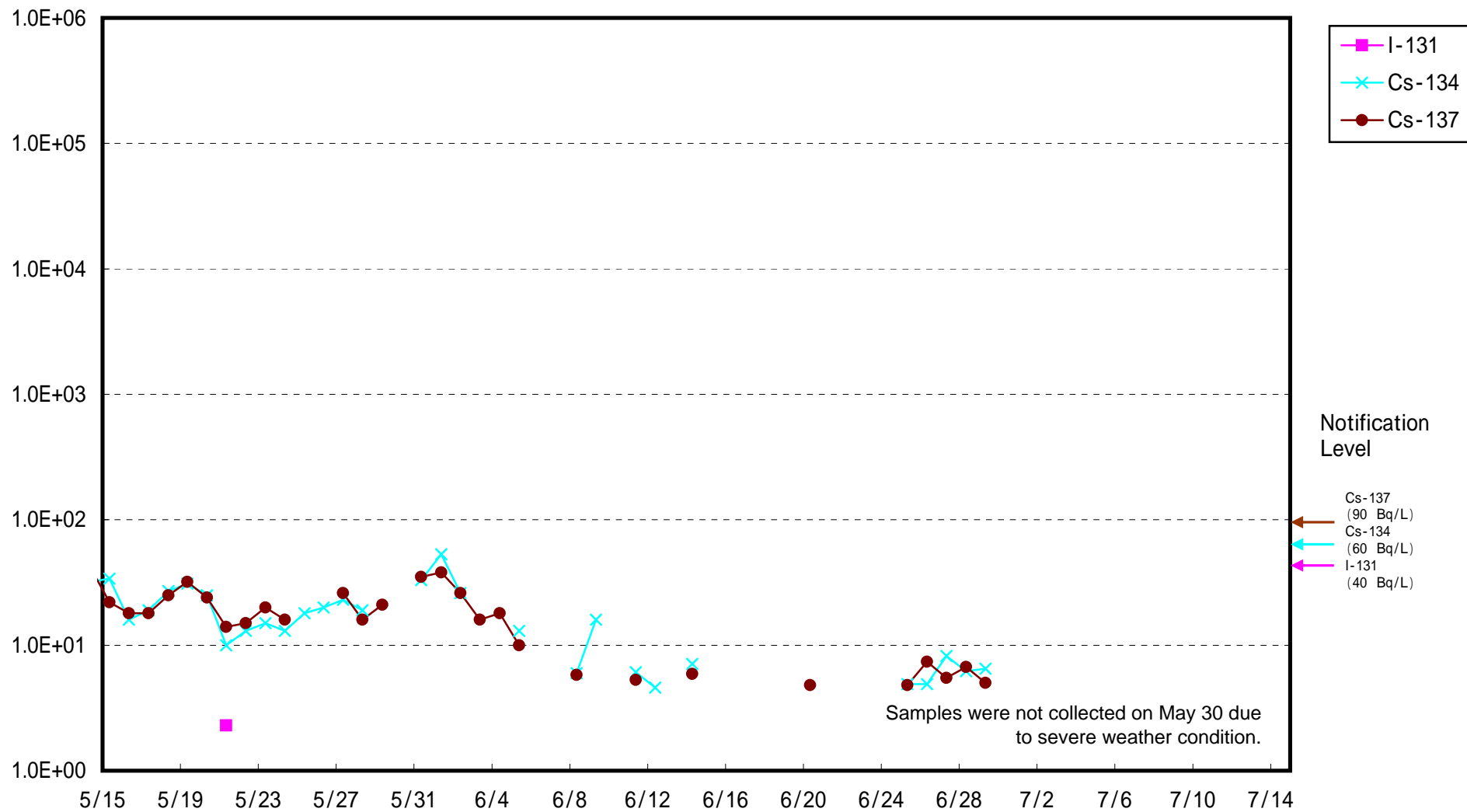
Radioactivity Density of Seawater at North of 1F5-6 Discharge Channel
 (approx.30m north of 5-6 discharge channel) (Bq/L)



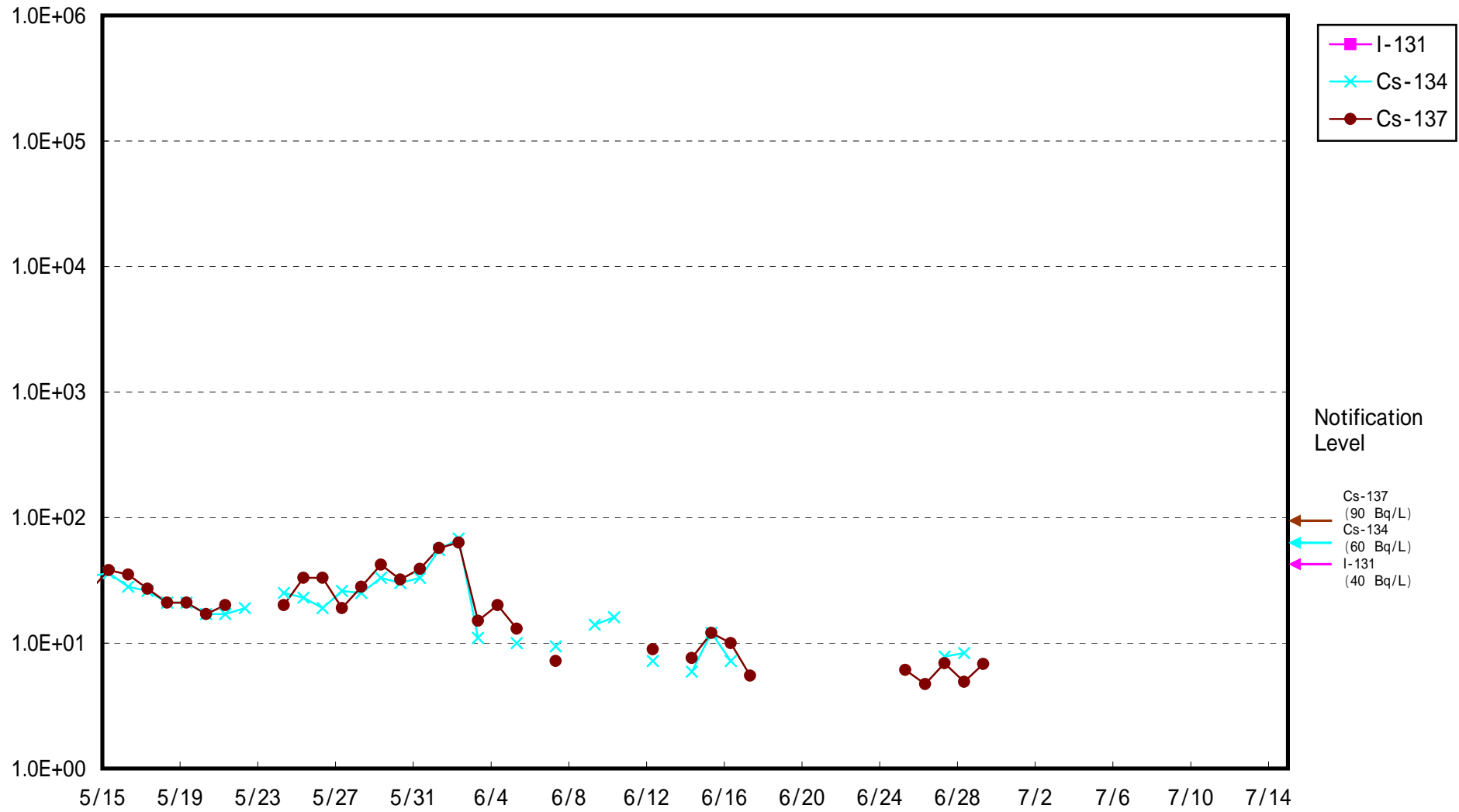
Radioactivity Density of Seawater at South Discharge Channel of 1F (Bq/L)



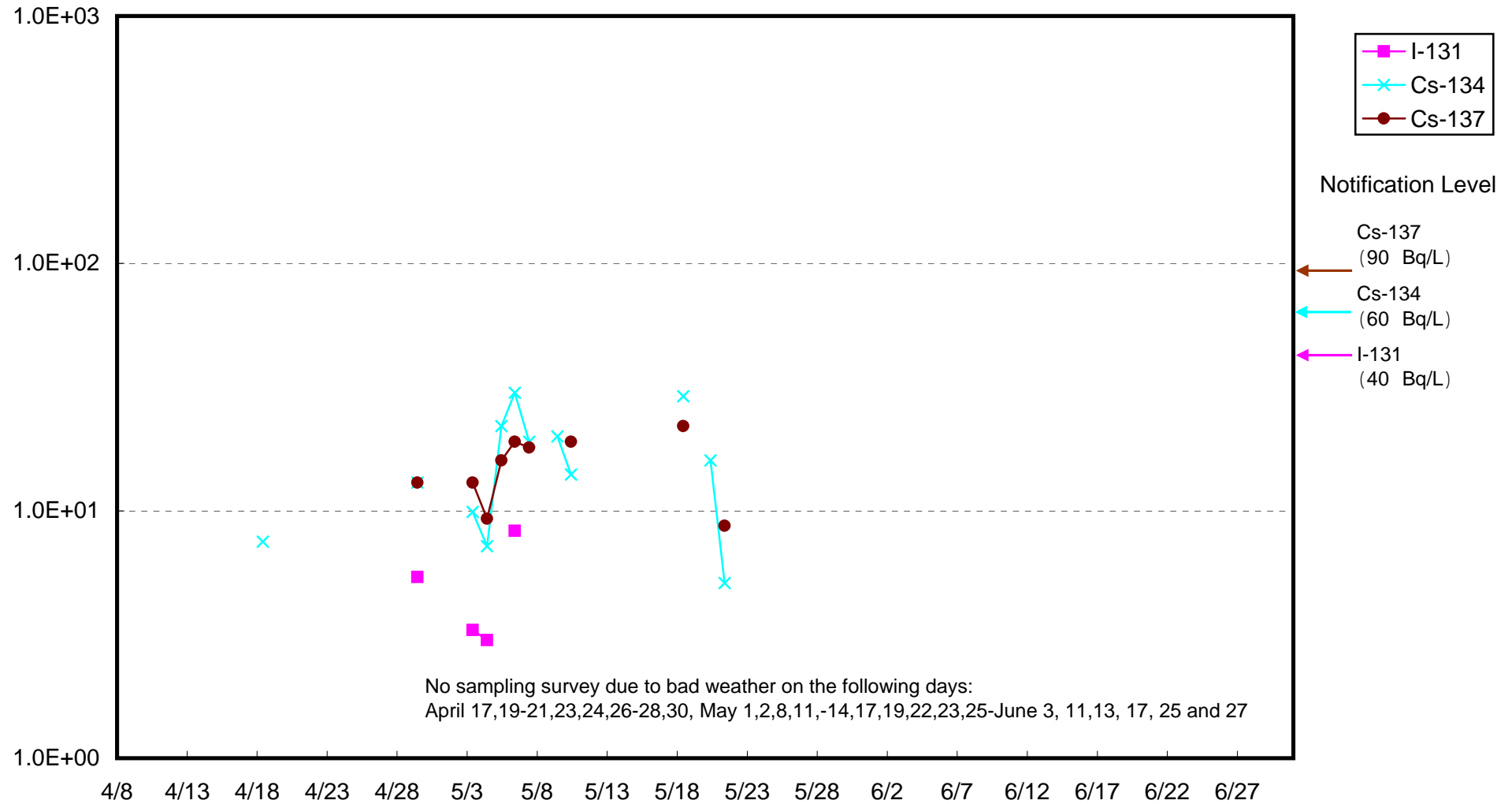
Radioactivity Density of Seawater at North Discharge Channel of 2F (Bq/L)



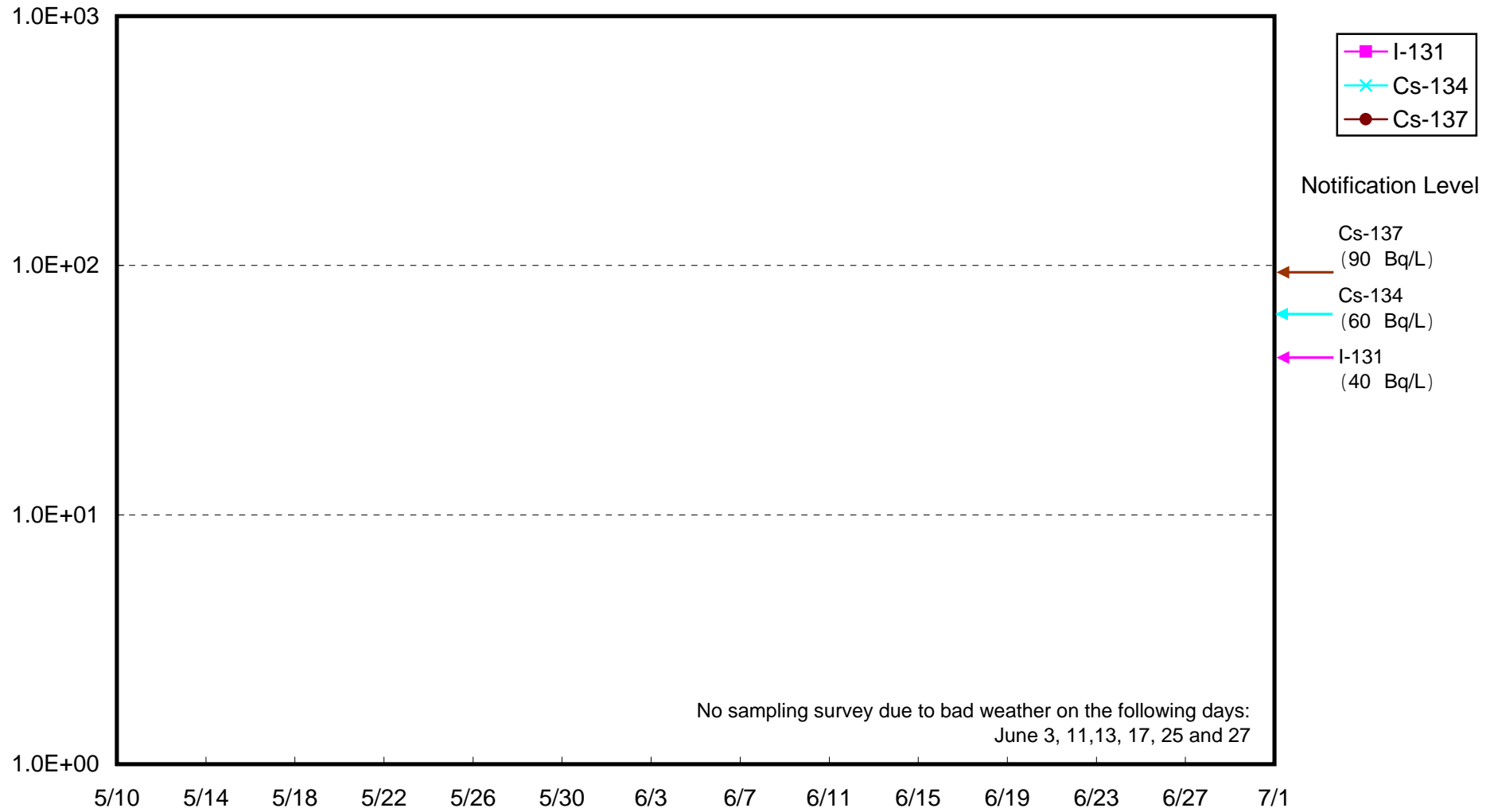
Radioactivity Density of Seawater at Iwasawa Shore 2F (Bq/L)



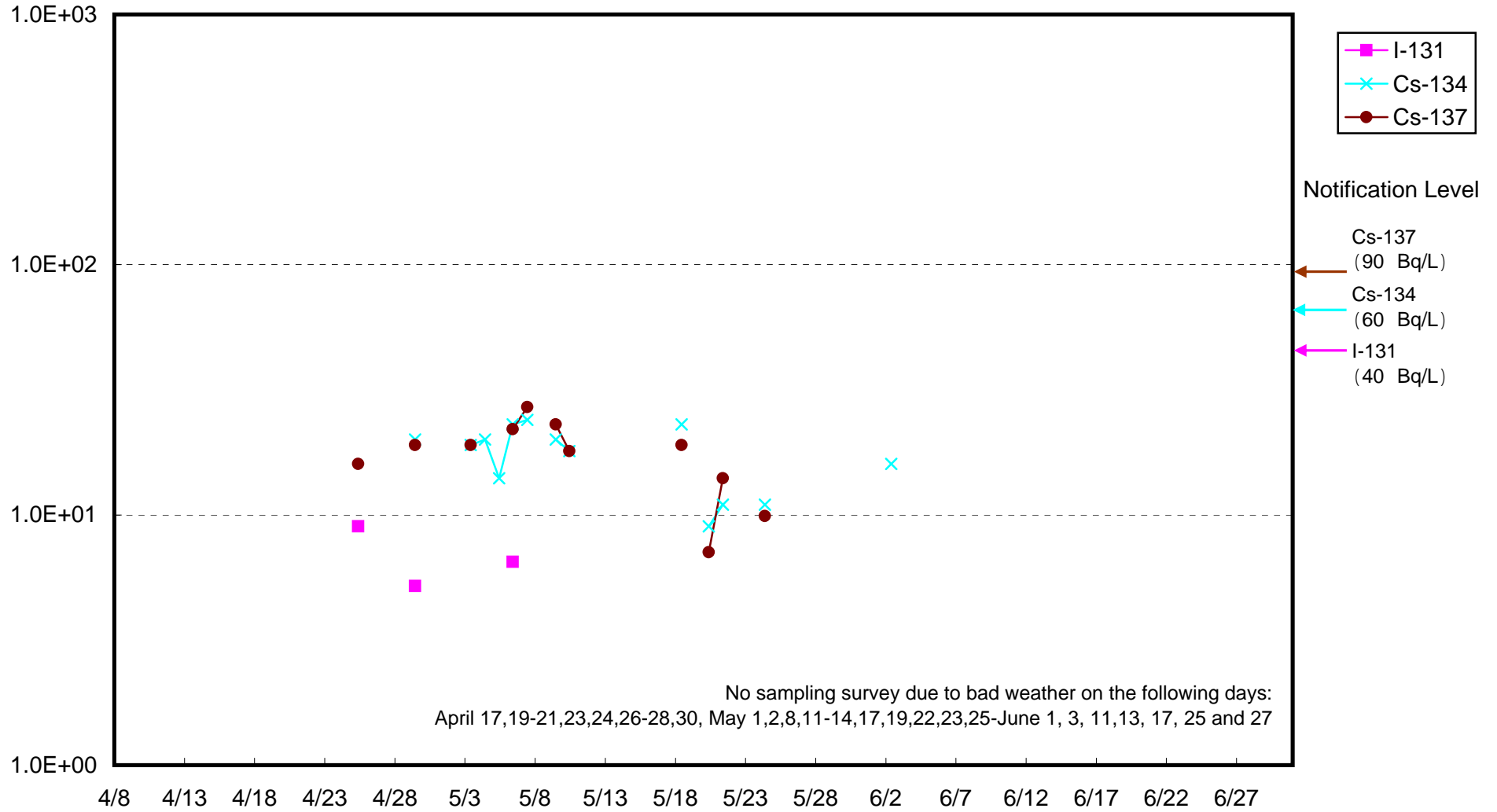
Radioactivity Density of Seawater around approx. 3km offshore of Haramachi district Upper Layer (Bq/L)



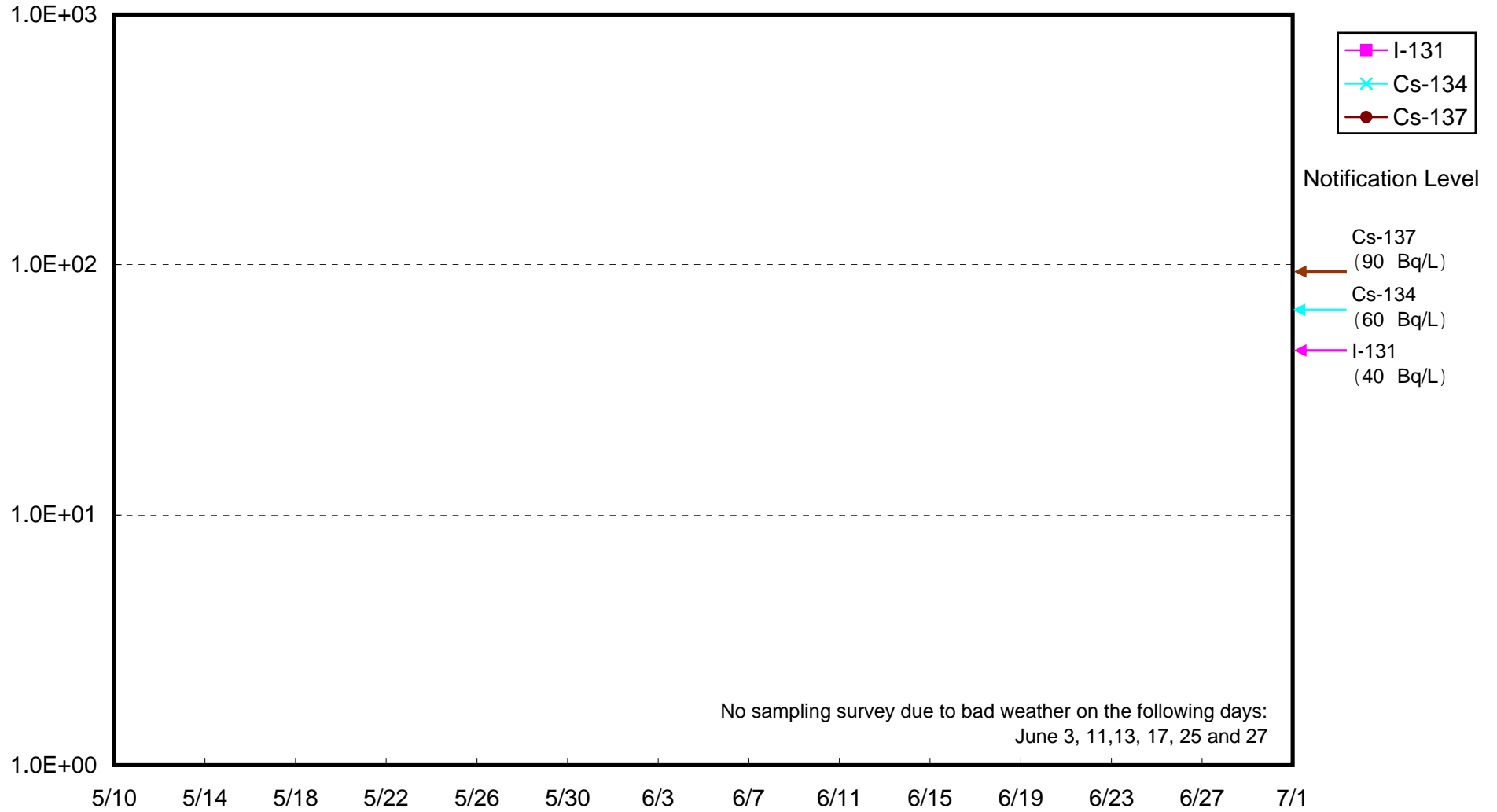
Radioactivity Density of Seawater around approx. 3km offshore of Haramachi district Lower Layer (Bq/L)



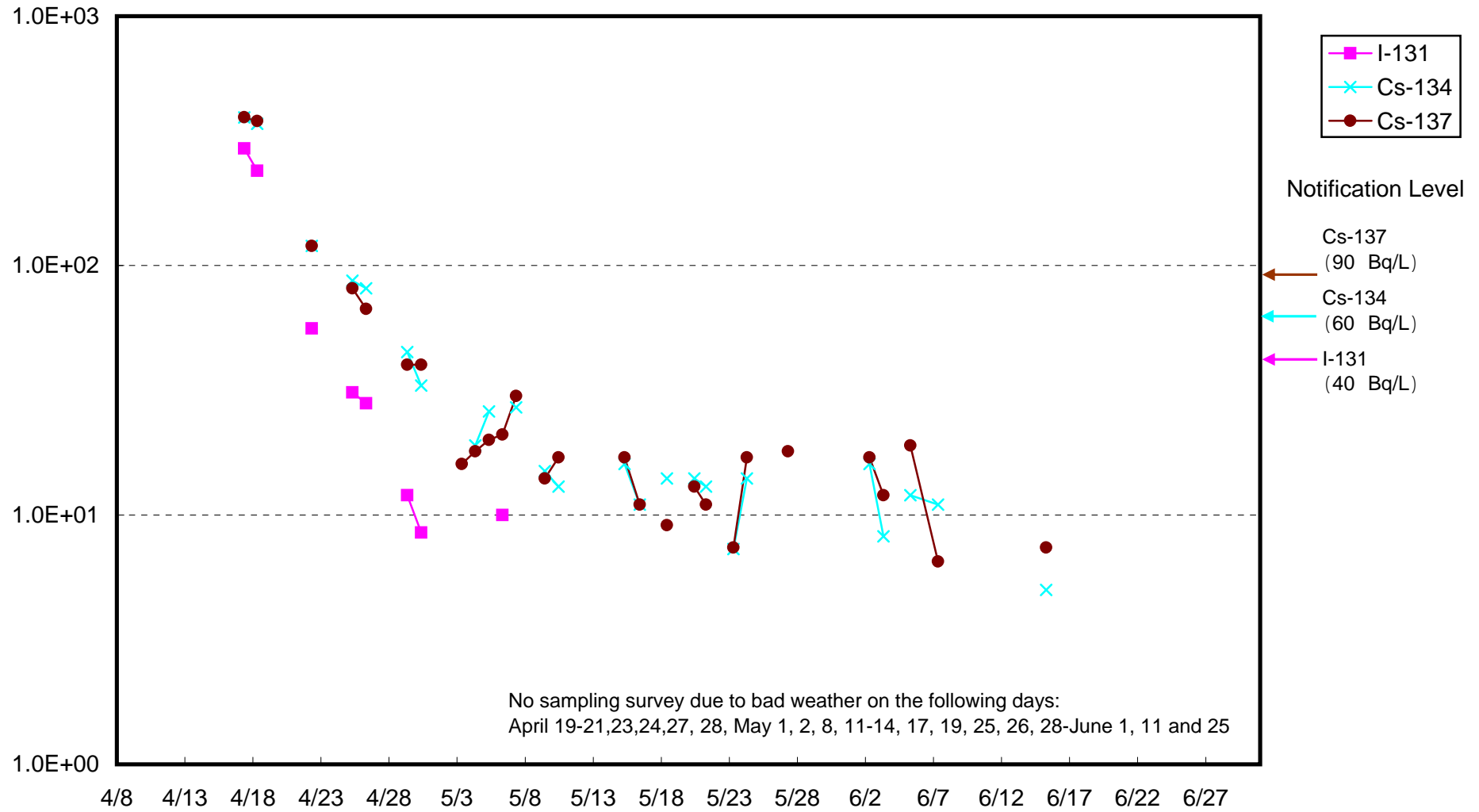
Radioactivity Density of Seawater around approx. 3km offshore of Odaka district Upper Layer (Bq/L)



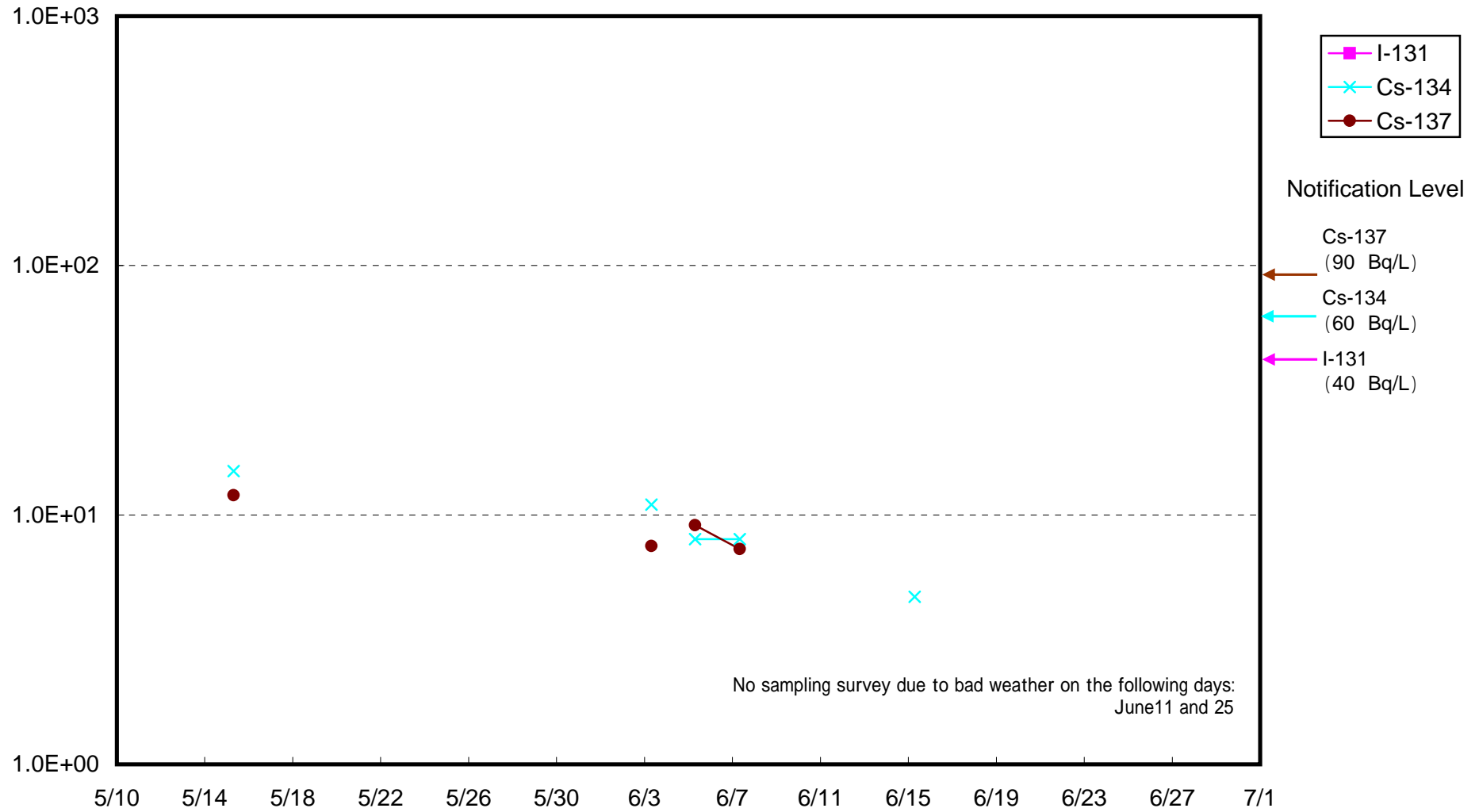
Radioactivity Density of Seawater around approx. 3km offshore of Odaka district Lower Layer (Bq/L)



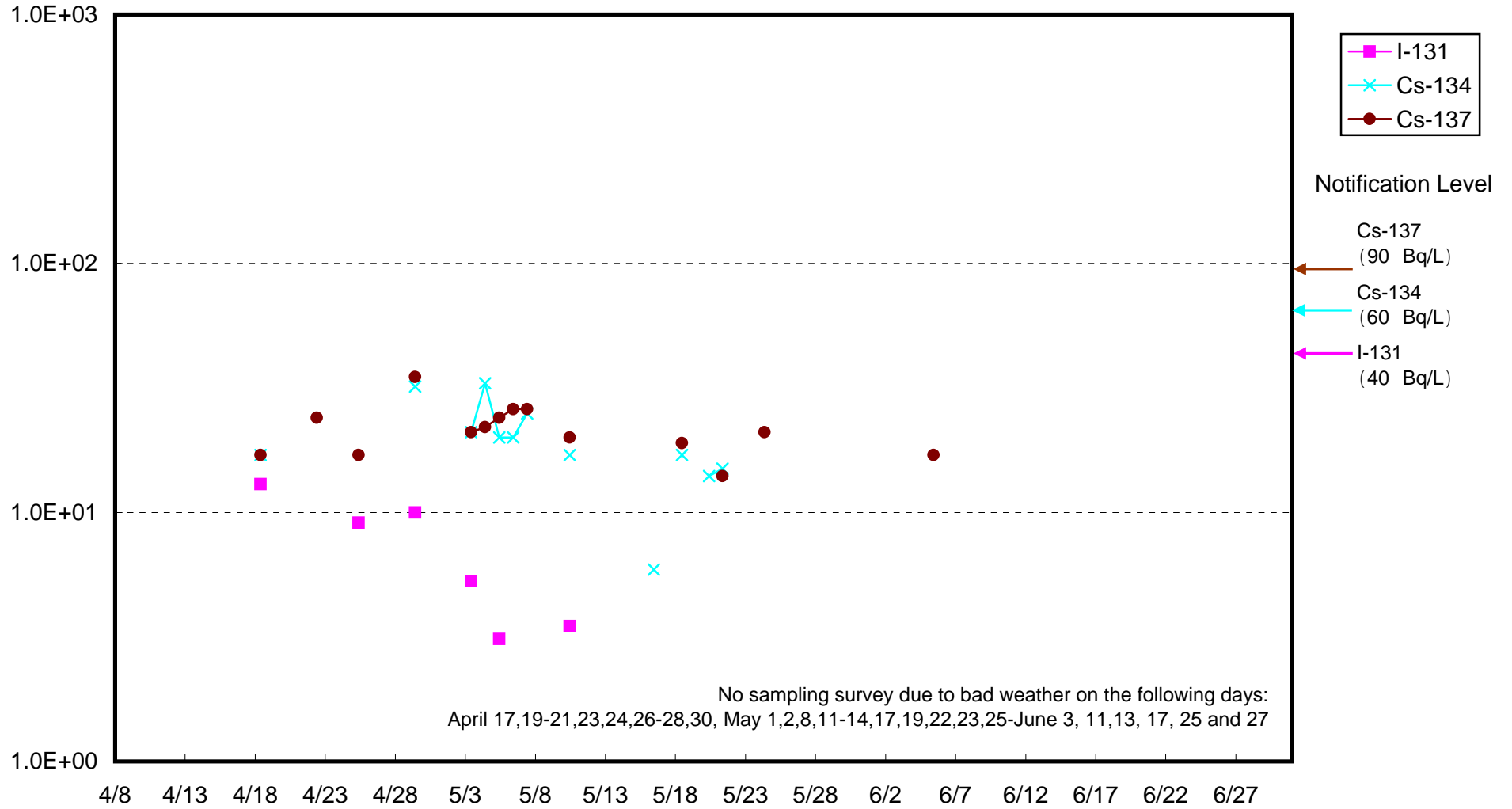
Radioactivity Density of Seawater around approx. 3km offshore of Iwasawa coast Upper Layer (Bq/L)



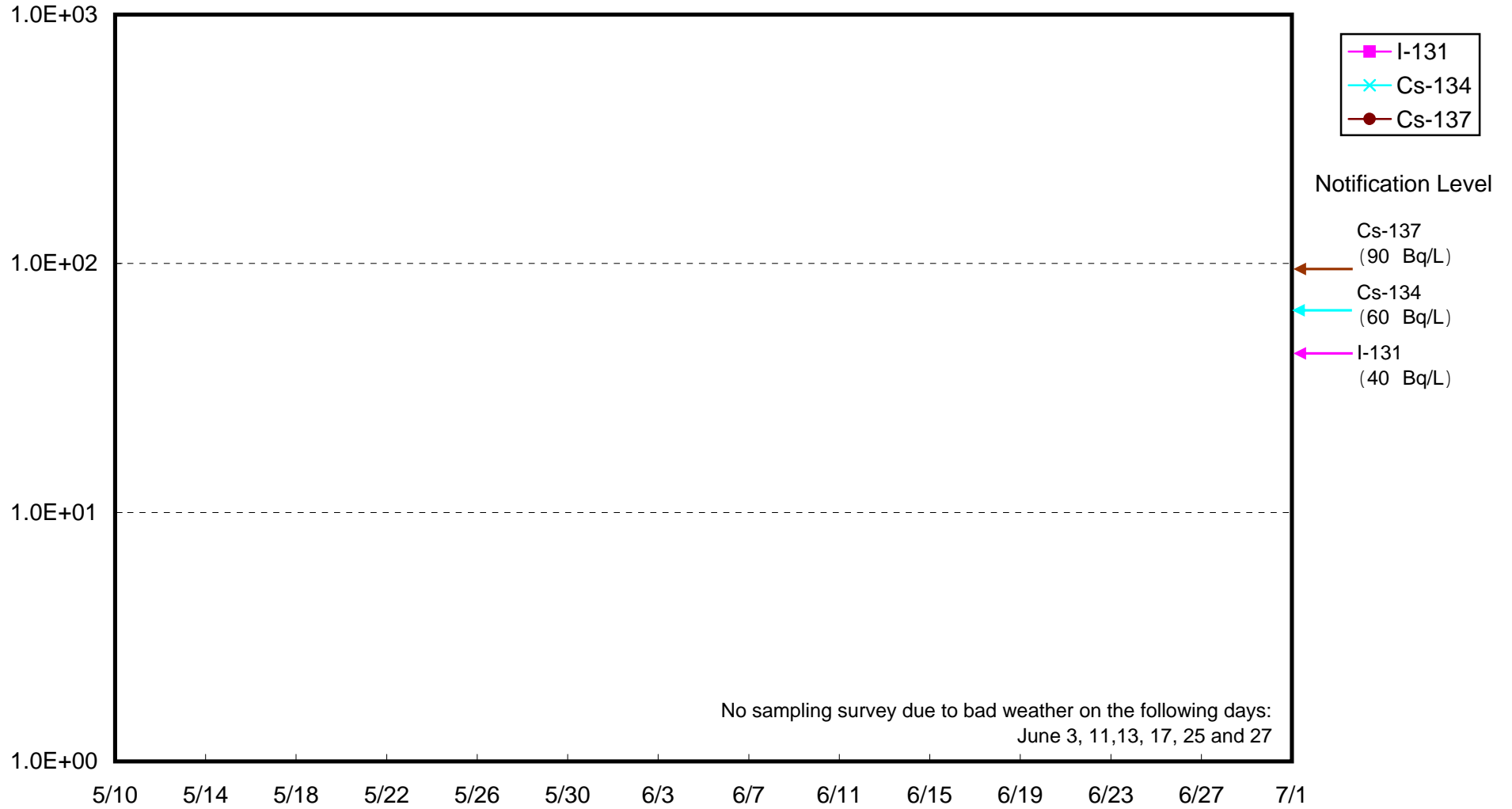
Radioactivity Density of Seawater around approx. 3km offshore of Iwasawa coast Lower Layer (Bq/L)



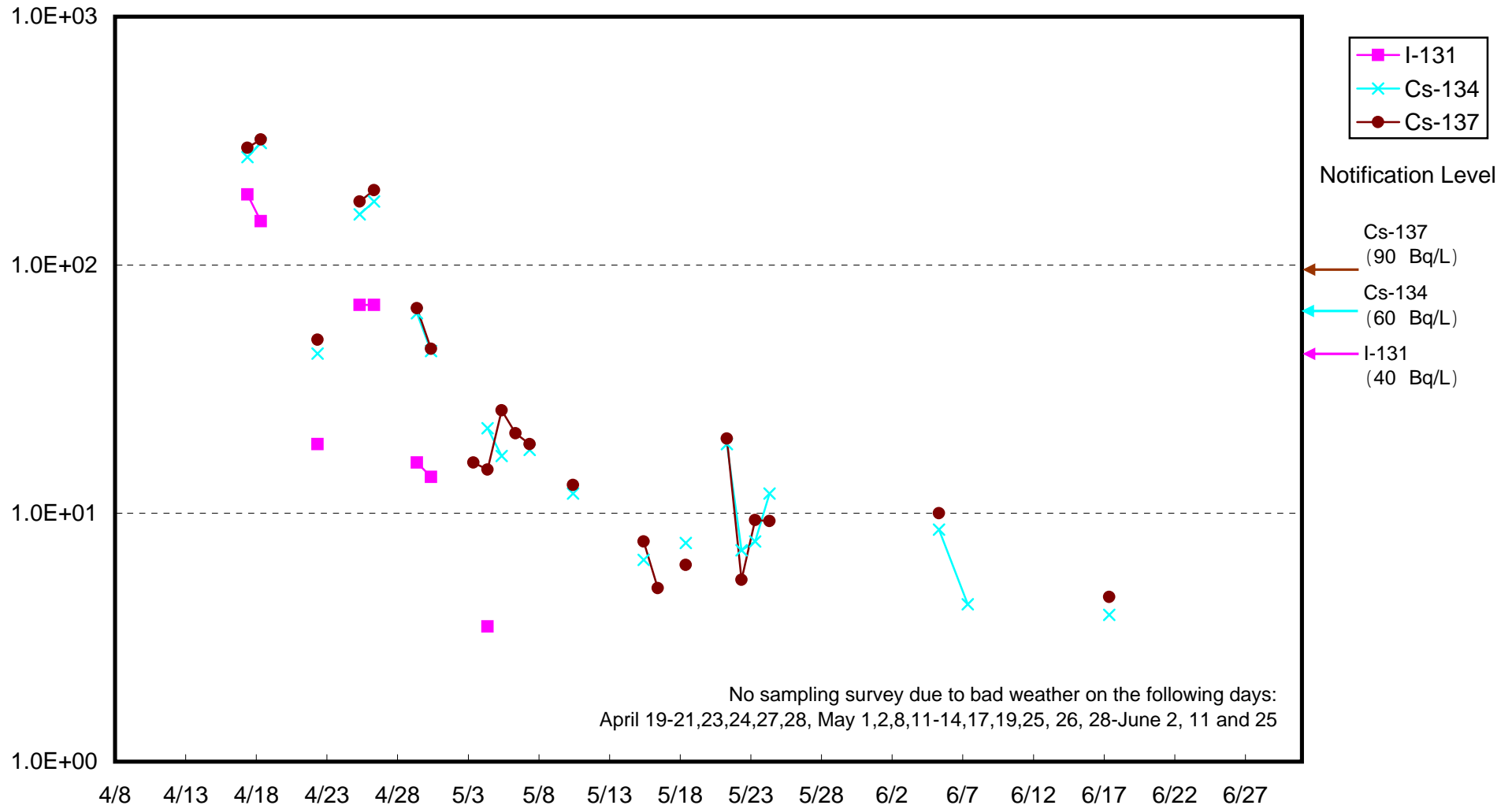
Radioactivity Density of Seawater around approx. 8km offshore of Odaka district Upper Layer (Bq/L)



Radioactivity Density of Seawater around approx. 8km offshore of Odaka district Lower Layer (Bq/L)



Radioactivity Density of Seawater around approx. 8km offshore of Iwasawa coast Upper Layer (Bq/L)



Radioactivity Density of Seawater around approx. 8km offshore of Iwasawa coast Lower Layer (Bq/L)

