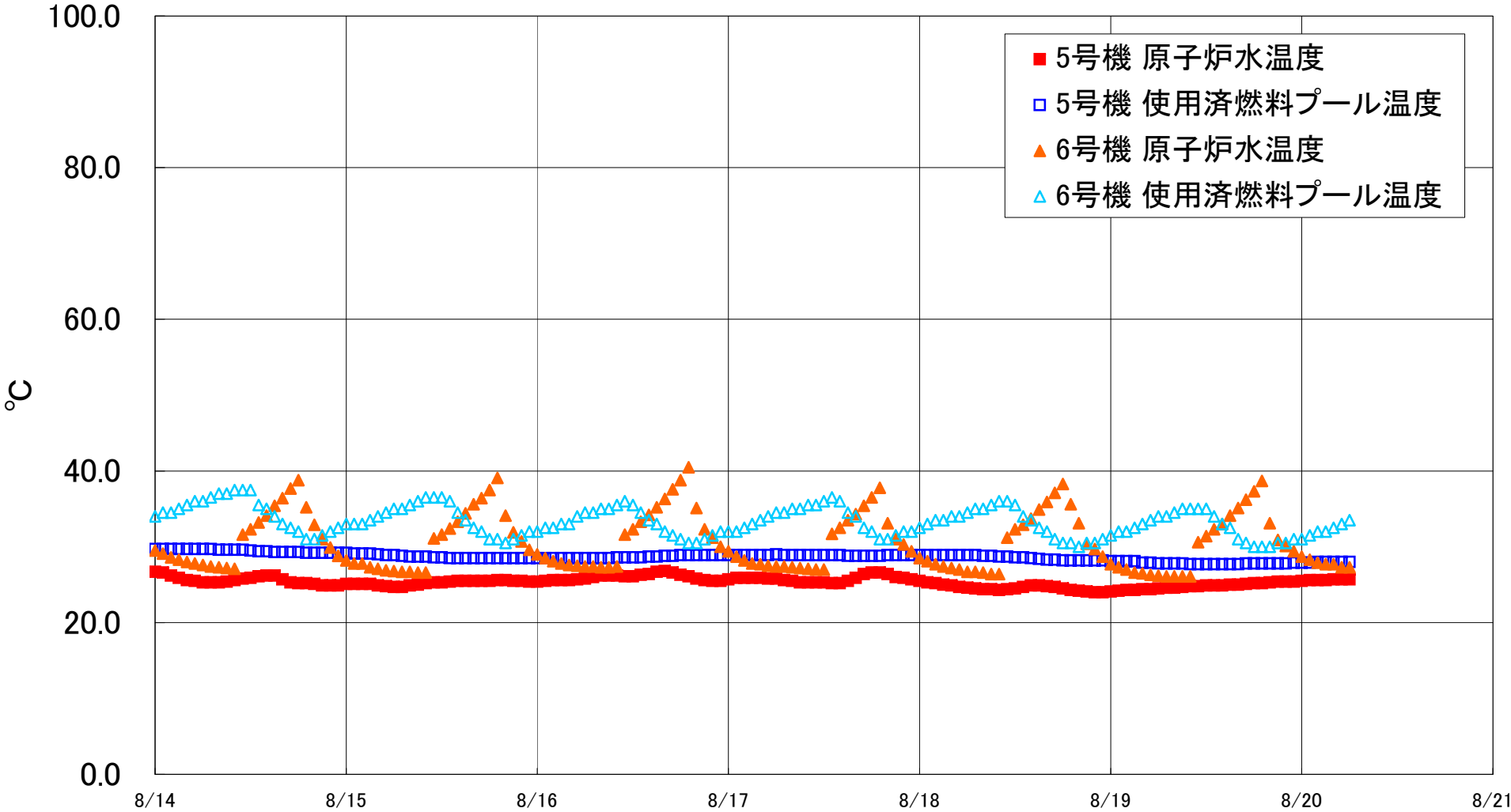


福島第一原子力発電所 5・6号機 原子炉水温度、使用済燃料プール温度推移



福島第一原子力発電所 5・6号機 原子炉水温度・使用済燃料プール温度

| 日時         | 5号機 原子炉水温度 | 5号機 使用済燃料プール温度 | 6号機 原子炉水温度 | 6号機 使用済燃料プール温度 |
|------------|------------|----------------|------------|----------------|
| 8/17 14:00 | 25.2       | 28.9           | 32.5       | 36.0           |
| 8/17 15:00 | 25.5       | 28.8           | 33.5       | 34.5           |
| 8/17 16:00 | 25.9       | 28.8           | 34.3       | 34.0           |
| 8/17 17:00 | 26.4       | 28.8           | 35.4       | 32.5           |
| 8/17 18:00 | 26.6       | 28.8           | 36.5       | 32.0           |
| 8/17 19:00 | 26.6       | 28.8           | 37.8       | 31.0           |
| 8/17 20:00 | 26.4       | 28.9           | 33.1       | 31.0           |
| 8/17 21:00 | 26.0       | 28.9           | 31.0       | 31.5           |
| 8/17 22:00 | 25.9       | 28.9           | 30.3       | 32.0           |
| 8/17 23:00 | 25.7       | 28.9           | 29.4       | 32.0           |
| 8/18 0:00  | 25.5       | 28.9           | 28.5       | 32.5           |
| 8/18 1:00  | 25.3       | 28.9           | 28.1       | 33.0           |
| 8/18 2:00  | 25.2       | 28.9           | 27.7       | 33.5           |
| 8/18 3:00  | 25.0       | 28.9           | 27.4       | 33.5           |
| 8/18 4:00  | 24.9       | 28.9           | 27.2       | 34.0           |
| 8/18 5:00  | 24.7       | 28.9           | 27.0       | 34.0           |
| 8/18 6:00  | 24.6       | 28.9           | 26.7       | 34.5           |
| 8/18 7:00  | 24.5       | 28.9           | 26.7       | 35.0           |
| 8/18 8:00  | 24.4       | 28.8           | 26.6       | 35.0           |
| 8/18 9:00  | 24.4       | 28.8           | 26.4       | 35.5           |
| 8/18 10:00 | 24.3       | 28.7           | 26.4       | 36.0           |
| 8/18 11:00 | 24.4       | 28.7           | 31.2       | 36.0           |
| 8/18 12:00 | 24.5       | 28.6           | 32.3       | 35.5           |
| 8/18 13:00 | 24.7       | 28.6           | 32.9       | 34.0           |
| 8/18 14:00 | 24.9       | 28.5           | 33.7       | 33.5           |
| 8/18 15:00 | 24.9       | 28.4           | 34.9       | 32.5           |
| 8/18 16:00 | 24.8       | 28.3           | 35.9       | 32.0           |
| 8/18 17:00 | 24.7       | 28.3           | 37.1       | 31.0           |
| 8/18 18:00 | 24.5       | 28.2           | 38.3       | 30.5           |
| 8/18 19:00 | 24.3       | 28.2           | 35.6       | 30.5           |
| 8/18 20:00 | 24.2       | 28.2           | 33.1       | 30.0           |
| 8/18 21:00 | 24.1       | 28.2           | 30.4       | 30.5           |
| 8/18 22:00 | 24.0       | 28.2           | 29.7       | 30.5           |
| 8/18 23:00 | 24.0       | 28.2           | 28.7       | 31.0           |
| 8/19 0:00  | 24.1       | 28.1           | 27.7       | 31.5           |
| 8/19 1:00  | 24.2       | 28.1           | 27.3       | 32.0           |
| 8/19 2:00  | 24.3       | 28.1           | 27.0       | 32.0           |
| 8/19 3:00  | 24.3       | 28.1           | 26.6       | 32.5           |
| 8/19 4:00  | 24.4       | 27.9           | 26.5       | 33.0           |
| 8/19 5:00  | 24.4       | 27.9           | 26.3       | 33.5           |
| 8/19 6:00  | 24.5       | 27.8           | 26.2       | 34.0           |
| 8/19 7:00  | 24.6       | 27.8           | 26.1       | 34.0           |
| 8/19 8:00  | 24.6       | 27.8           | 26.1       | 34.5           |
| 8/19 9:00  | 24.7       | 27.8           | 26.1       | 35.0           |
| 8/19 10:00 | 24.8       | 27.7           | 26.1       | 35.0           |
| 8/19 11:00 | 24.8       | 27.7           | 30.6       | 35.0           |
| 8/19 12:00 | 24.9       | 27.7           | 31.4       | 35.0           |
| 8/19 13:00 | 24.9       | 27.7           | 32.3       | 34.0           |
| 8/19 14:00 | 24.9       | 27.7           | 33.0       | 33.0           |
| 8/19 15:00 | 25.0       | 27.7           | 34.1       | 32.5           |
| 8/19 16:00 | 25.0       | 27.7           | 35.1       | 31.0           |
| 8/19 17:00 | 25.1       | 27.8           | 36.2       | 30.5           |
| 8/19 18:00 | 25.2       | 27.8           | 37.3       | 30.0           |
| 8/19 19:00 | 25.2       | 27.8           | 38.7       | 30.0           |
| 8/19 20:00 | 25.3       | 27.8           | 33.1       | 30.0           |
| 8/19 21:00 | 25.4       | 27.8           | 30.9       | 30.5           |
| 8/19 22:00 | 25.4       | 27.8           | 30.1       | 30.5           |
| 8/19 23:00 | 25.4       | 27.9           | 29.4       | 31.0           |
| 8/20 0:00  | 25.5       | 27.9           | 28.7       | 31.0           |
| 8/20 1:00  | 25.6       | 27.9           | 28.3       | 31.5           |
| 8/20 2:00  | 25.6       | 28.0           | 27.9       | 32.0           |
| 8/20 3:00  | 25.6       | 28.0           | 27.7       | 32.0           |
| 8/20 4:00  | 25.7       | 28.0           | 27.7       | 32.5           |
| 8/20 5:00  | 25.7       | 28.0           | 27.3       | 33.0           |
| 8/20 6:00  | 25.7       | 28.0           | 27.3       | 33.5           |