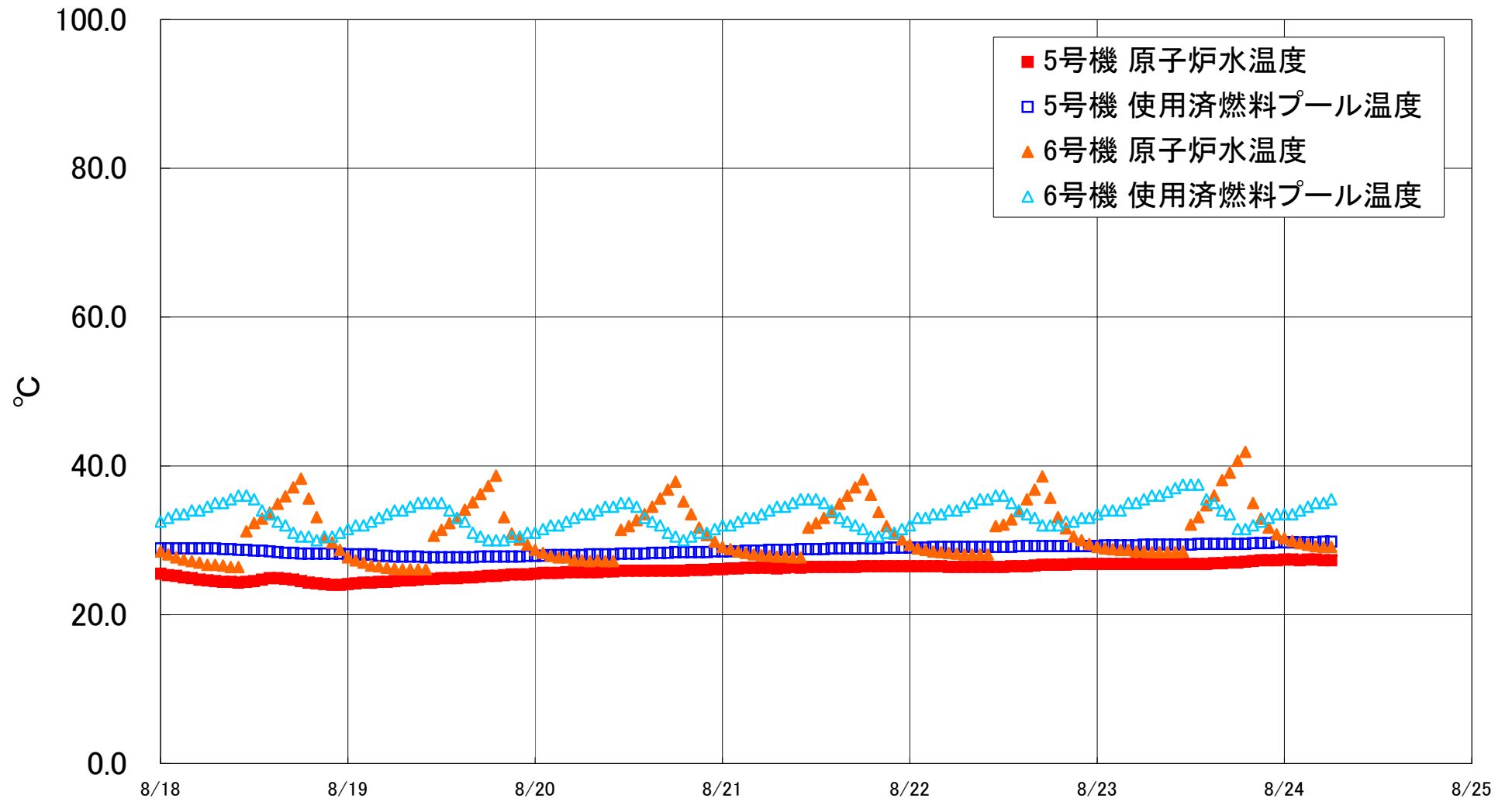


福島第一原子力発電所 5・6号機 原子炉水温度、使用済燃料プール温度推移



福島第一原子力発電所 5・6号機 原子炉水温度・使用済燃料プール温度

| 日時 | 5号機 原子炉水温度 | 5号機 使用済燃料プール温度 | 6号機 原子炉水温度 | 6号機 使用済燃料プール温度 |
|------------|------------|----------------|------------|----------------|
| 8/21 14:00 | 26.4 | 28.9 | 33.8 | 34.0 |
| 8/21 15:00 | 26.4 | 28.9 | 34.9 | 33.0 |
| 8/21 16:00 | 26.4 | 28.9 | 36.0 | 32.5 |
| 8/21 17:00 | 26.4 | 28.9 | 37.1 | 32.0 |
| 8/21 18:00 | 26.5 | 28.9 | 38.2 | 31.5 |
| 8/21 19:00 | 26.5 | 28.9 | 36.1 | 30.5 |
| 8/21 20:00 | 26.5 | 28.9 | 33.8 | 30.5 |
| 8/21 21:00 | 26.5 | 29.0 | 31.9 | 31.0 |
| 8/21 22:00 | 26.5 | 29.0 | 30.9 | 31.0 |
| 8/21 23:00 | 26.5 | 29.0 | 30.1 | 31.5 |
| 8/22 0:00 | 26.5 | 29.0 | 29.4 | 32.0 |
| 8/22 1:00 | 26.5 | 29.0 | 28.9 | 33.0 |
| 8/22 2:00 | 26.5 | 29.0 | 28.7 | 33.0 |
| 8/22 3:00 | 26.5 | 29.1 | 28.5 | 33.5 |
| 8/22 4:00 | 26.5 | 29.1 | 28.4 | 33.5 |
| 8/22 5:00 | 26.4 | 29.1 | 28.3 | 34.0 |
| 8/22 6:00 | 26.4 | 29.1 | 28.2 | 34.0 |
| 8/22 7:00 | 26.4 | 29.1 | 28.1 | 34.5 |
| 8/22 8:00 | 26.4 | 29.1 | 28.1 | 35.0 |
| 8/22 9:00 | 26.4 | 29.1 | 28.1 | 35.5 |
| 8/22 10:00 | 26.4 | 29.1 | 28.1 | 35.5 |
| 8/22 11:00 | 26.4 | 29.1 | 31.9 | 36.0 |
| 8/22 12:00 | 26.4 | 29.1 | 32.1 | 36.0 |
| 8/22 13:00 | 26.5 | 29.1 | 32.8 | 35.0 |
| 8/22 14:00 | 26.5 | 29.2 | 33.9 | 34.0 |
| 8/22 15:00 | 26.5 | 29.2 | 35.5 | 33.5 |
| 8/22 16:00 | 26.6 | 29.2 | 36.8 | 33.0 |
| 8/22 17:00 | 26.7 | 29.2 | 38.6 | 32.0 |
| 8/22 18:00 | 26.7 | 29.2 | 35.7 | 32.0 |
| 8/22 19:00 | 26.7 | 29.2 | 33.1 | 32.0 |
| 8/22 20:00 | 26.7 | 29.2 | 31.6 | 32.5 |
| 8/22 21:00 | 26.8 | 29.2 | 30.5 | 32.5 |
| 8/22 22:00 | 26.8 | 29.2 | 30.0 | 33.0 |
| 8/22 23:00 | 26.8 | 29.2 | 29.5 | 33.0 |
| 8/23 0:00 | 26.8 | 29.2 | 29.1 | 33.5 |
| 8/23 1:00 | 26.8 | 29.3 | 28.9 | 34.0 |
| 8/23 2:00 | 26.8 | 29.3 | 28.8 | 34.0 |
| 8/23 3:00 | 26.8 | 29.3 | 28.7 | 34.0 |
| 8/23 4:00 | 26.8 | 29.3 | 28.7 | 35.0 |
| 8/23 5:00 | 26.8 | 29.3 | 28.5 | 35.0 |
| 8/23 6:00 | 26.8 | 29.4 | 28.5 | 35.5 |
| 8/23 7:00 | 26.8 | 29.4 | 28.4 | 36.0 |
| 8/23 8:00 | 26.8 | 29.4 | 28.4 | 36.0 |
| 8/23 9:00 | 26.8 | 29.4 | 28.4 | 36.5 |
| 8/23 10:00 | 26.8 | 29.4 | 28.4 | 37.0 |
| 8/23 11:00 | 26.8 | 29.4 | 28.5 | 37.5 |
| 8/23 12:00 | 26.8 | 29.4 | 32.1 | 37.5 |
| 8/23 13:00 | 26.8 | 29.5 | 33.1 | 37.5 |
| 8/23 14:00 | 26.8 | 29.5 | 34.7 | 35.5 |
| 8/23 15:00 | 26.9 | 29.5 | 36.0 | 35.0 |
| 8/23 16:00 | 26.9 | 29.5 | 38.1 | 34.0 |
| 8/23 17:00 | 27.0 | 29.5 | 39.1 | 33.5 |
| 8/23 18:00 | 27.0 | 29.5 | 40.7 | 31.5 |
| 8/23 19:00 | 27.1 | 29.5 | 41.9 | 31.5 |
| 8/23 20:00 | 27.2 | 29.6 | 35.0 | 32.0 |
| 8/23 21:00 | 27.3 | 29.6 | 32.9 | 32.5 |
| 8/23 22:00 | 27.3 | 29.6 | 31.7 | 33.0 |
| 8/23 23:00 | 27.3 | 29.7 | 30.8 | 33.5 |
| 8/24 0:00 | 27.4 | 29.7 | 30.3 | 33.5 |
| 8/24 1:00 | 27.4 | 29.7 | 29.9 | 33.5 |
| 8/24 2:00 | 27.3 | 29.7 | 29.6 | 34.0 |
| 8/24 3:00 | 27.4 | 29.7 | 29.4 | 34.5 |
| 8/24 4:00 | 27.4 | 29.7 | 29.2 | 35.0 |
| 8/24 5:00 | 27.3 | 29.8 | 29.1 | 35.0 |
| 8/24 6:00 | 27.3 | 29.8 | 29.1 | 35.5 |