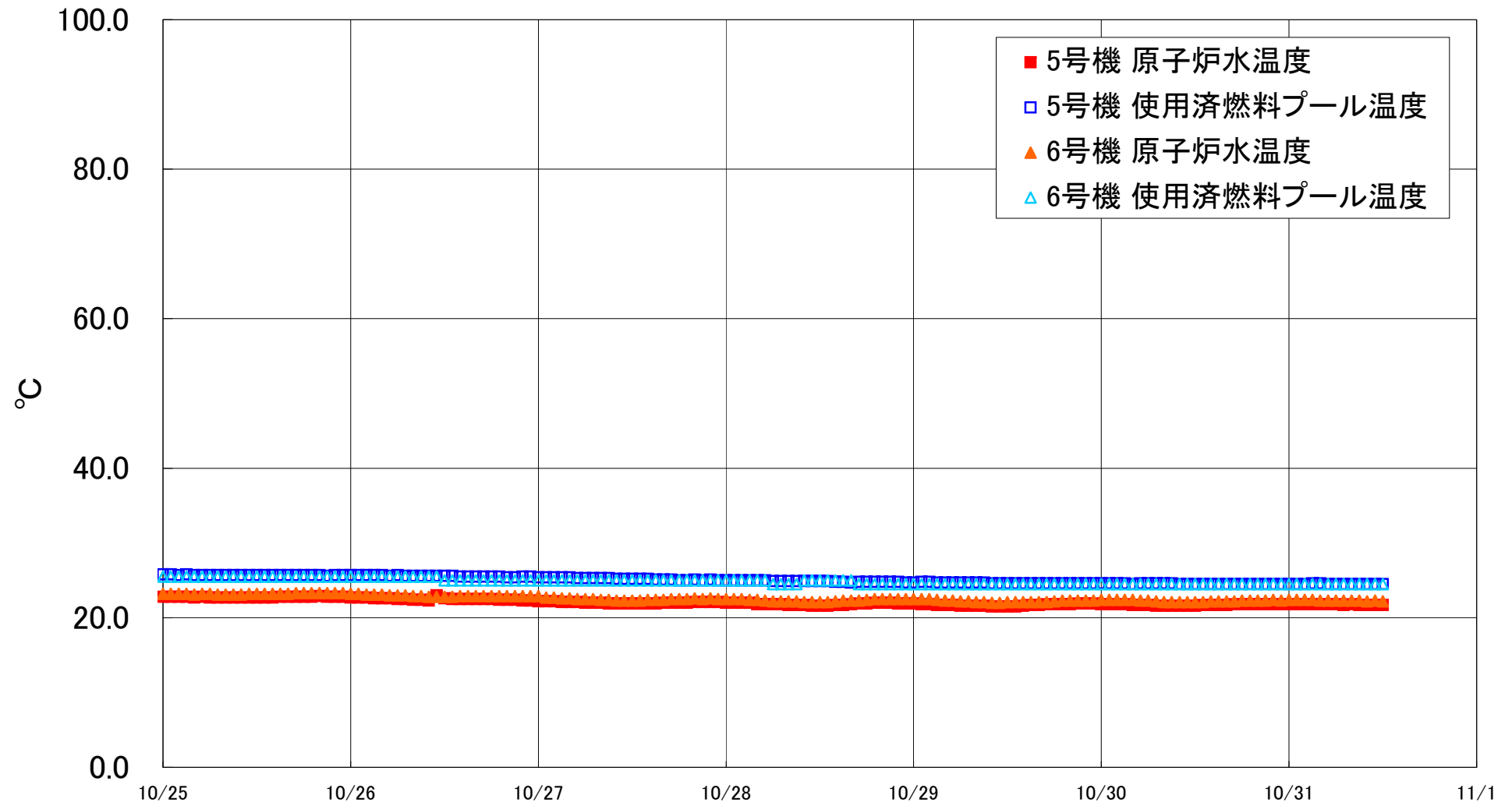


福島第一原子力発電所 5・6号機 原子炉水温度、使用済燃料プール温度推移



福島第一原子力発電所 5・6号機 原子炉水温度・使用済燃料プール温度

| 日時 | 5号機 原子炉水温度 | 5号機 使用済燃料プール温度 | 6号機 原子炉水温度 | 6号機 使用済燃料プール温度 |
|-------------|------------|----------------|------------|----------------|
| 10/28 20:00 | 22.0 | 24.8 | 22.5 | 24.5 |
| 10/28 21:00 | 22.0 | 24.8 | 22.5 | 24.5 |
| 10/28 22:00 | 21.9 | 24.8 | 22.5 | 24.5 |
| 10/28 23:00 | 21.9 | 24.7 | 22.5 | 24.5 |
| 10/29 0:00 | 21.9 | 24.7 | 22.5 | 24.5 |
| 10/29 1:00 | 21.8 | 24.8 | 22.5 | 24.5 |
| 10/29 2:00 | 21.8 | 24.8 | 22.5 | 24.5 |
| 10/29 3:00 | 21.7 | 24.7 | 22.4 | 24.5 |
| 10/29 4:00 | 21.7 | 24.7 | 22.3 | 24.5 |
| 10/29 5:00 | 21.7 | 24.7 | 22.3 | 24.5 |
| 10/29 6:00 | 21.6 | 24.7 | 22.2 | 24.5 |
| 10/29 7:00 | 21.6 | 24.7 | 22.2 | 24.5 |
| 10/29 8:00 | 21.6 | 24.7 | 22.1 | 24.5 |
| 10/29 9:00 | 21.6 | 24.7 | 22.1 | 24.5 |
| 10/29 10:00 | 21.5 | 24.6 | 22.0 | 24.5 |
| 10/29 11:00 | 21.5 | 24.6 | 22.0 | 24.5 |
| 10/29 12:00 | 21.5 | 24.6 | 22.1 | 24.5 |
| 10/29 13:00 | 21.5 | 24.6 | 22.1 | 24.5 |
| 10/29 14:00 | 21.6 | 24.6 | 22.1 | 24.5 |
| 10/29 15:00 | 21.7 | 24.6 | 22.1 | 24.5 |
| 10/29 16:00 | 21.7 | 24.6 | 22.1 | 24.5 |
| 10/29 17:00 | 21.8 | 24.6 | 22.1 | 24.5 |
| 10/29 18:00 | 21.8 | 24.6 | 22.2 | 24.5 |
| 10/29 19:00 | 21.8 | 24.6 | 22.3 | 24.5 |
| 10/29 20:00 | 21.8 | 24.6 | 22.3 | 24.5 |
| 10/29 21:00 | 21.9 | 24.6 | 22.3 | 24.5 |
| 10/29 22:00 | 21.9 | 24.6 | 22.3 | 24.5 |
| 10/29 23:00 | 21.9 | 24.6 | 22.3 | 24.5 |
| 10/30 0:00 | 21.8 | 24.6 | 22.4 | 24.5 |
| 10/30 1:00 | 21.8 | 24.6 | 22.4 | 24.5 |
| 10/30 2:00 | 21.8 | 24.6 | 22.4 | 24.5 |
| 10/30 3:00 | 21.8 | 24.6 | 22.4 | 24.5 |
| 10/30 4:00 | 21.7 | 24.5 | 22.4 | 24.5 |
| 10/30 5:00 | 21.7 | 24.6 | 22.3 | 24.5 |
| 10/30 6:00 | 21.7 | 24.6 | 22.3 | 24.5 |
| 10/30 7:00 | 21.6 | 24.6 | 22.2 | 24.5 |
| 10/30 8:00 | 21.6 | 24.6 | 22.1 | 24.5 |
| 10/30 9:00 | 21.6 | 24.6 | 22.1 | 24.5 |
| 10/30 10:00 | 21.6 | 24.5 | 22.1 | 24.5 |
| 10/30 11:00 | 21.6 | 24.5 | 22.1 | 24.5 |
| 10/30 12:00 | 21.6 | 24.5 | 22.1 | 24.5 |
| 10/30 13:00 | 21.7 | 24.5 | 22.1 | 24.5 |
| 10/30 14:00 | 21.7 | 24.5 | 22.2 | 24.5 |
| 10/30 15:00 | 21.7 | 24.5 | 22.2 | 24.5 |
| 10/30 16:00 | 21.7 | 24.5 | 22.2 | 24.5 |
| 10/30 17:00 | 21.8 | 24.5 | 22.2 | 24.5 |
| 10/30 18:00 | 21.8 | 24.5 | 22.3 | 24.5 |
| 10/30 19:00 | 21.8 | 24.5 | 22.3 | 24.5 |
| 10/30 20:00 | 21.8 | 24.5 | 22.3 | 24.5 |
| 10/30 21:00 | 21.8 | 24.5 | 22.3 | 24.5 |
| 10/30 22:00 | 21.8 | 24.5 | 22.4 | 24.5 |
| 10/30 23:00 | 21.8 | 24.5 | 22.3 | 24.5 |
| 10/31 0:00 | 21.8 | 24.5 | 22.4 | 24.5 |
| 10/31 1:00 | 21.8 | 24.5 | 22.4 | 24.5 |
| 10/31 2:00 | 21.8 | 24.5 | 22.4 | 24.5 |
| 10/31 3:00 | 21.8 | 24.6 | 22.4 | 24.5 |
| 10/31 4:00 | 21.8 | 24.6 | 22.3 | 24.5 |
| 10/31 5:00 | 21.8 | 24.5 | 22.3 | 24.5 |
| 10/31 6:00 | 21.8 | 24.5 | 22.3 | 24.5 |
| 10/31 7:00 | 21.7 | 24.5 | 22.3 | 24.5 |
| 10/31 8:00 | 21.8 | 24.5 | 22.3 | 24.5 |
| 10/31 9:00 | 21.7 | 24.5 | 22.3 | 24.5 |
| 10/31 10:00 | 21.7 | 24.5 | 22.2 | 24.5 |
| 10/31 11:00 | 21.7 | 24.5 | 22.3 | 24.5 |
| 10/31 12:00 | 21.7 | 24.5 | 22.2 | 24.5 |