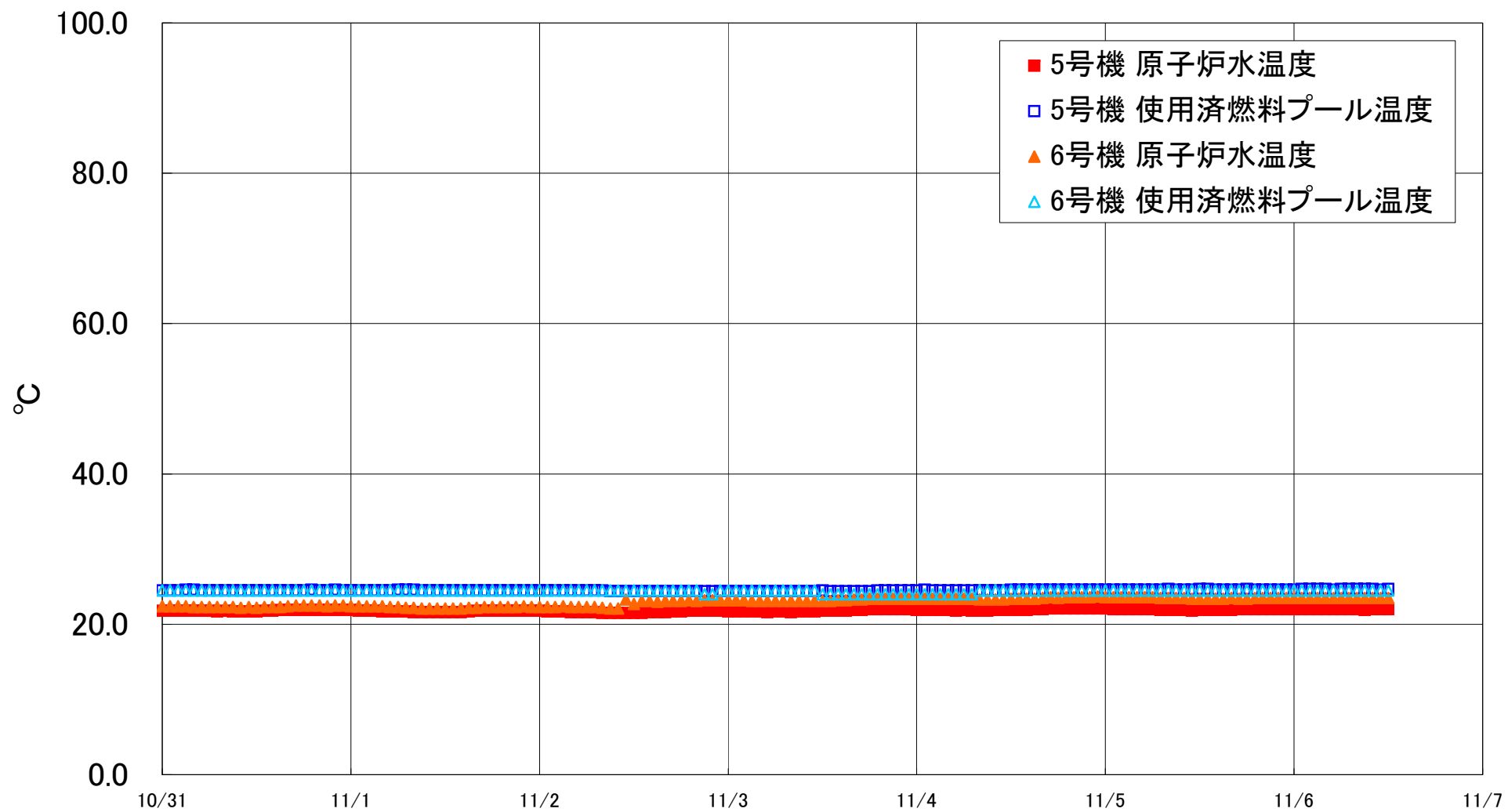


福島第一原子力発電所 5・6号機 原子炉水温度、使用済燃料プール温度推移



福島第一原子力発電所 5・6号機 原子炉水温度・使用済燃料プール温度

| 日時 | 5号機 原子炉水温度 | 5号機 使用済燃料プール温度 | 6号機 原子炉水温度 | 6号機 使用済燃料プール温度 |
|------------|------------|----------------|------------|----------------|
| 11/3 20:00 | 22.0 | 24.5 | 23.4 | 24.0 |
| 11/3 21:00 | 22.0 | 24.5 | 23.4 | 24.0 |
| 11/3 22:00 | 22.0 | 24.5 | 23.4 | 24.0 |
| 11/3 23:00 | 22.0 | 24.5 | 23.4 | 24.0 |
| 11/4 0:00 | 21.9 | 24.5 | 23.4 | 24.0 |
| 11/4 1:00 | 21.9 | 24.6 | 23.4 | 24.0 |
| 11/4 2:00 | 21.9 | 24.5 | 23.4 | 24.0 |
| 11/4 3:00 | 21.9 | 24.5 | 23.4 | 24.0 |
| 11/4 4:00 | 21.9 | 24.5 | 23.4 | 24.0 |
| 11/4 5:00 | 21.8 | 24.5 | 23.4 | 24.0 |
| 11/4 6:00 | 21.9 | 24.5 | 23.4 | 24.0 |
| 11/4 7:00 | 21.8 | 24.5 | 23.4 | 24.0 |
| 11/4 8:00 | 21.8 | 24.5 | 23.3 | 24.5 |
| 11/4 9:00 | 21.8 | 24.5 | 23.3 | 24.5 |
| 11/4 10:00 | 21.9 | 24.5 | 23.3 | 24.5 |
| 11/4 11:00 | 21.9 | 24.5 | 23.3 | 24.5 |
| 11/4 12:00 | 21.9 | 24.6 | 23.4 | 24.5 |
| 11/4 13:00 | 21.9 | 24.6 | 23.4 | 24.5 |
| 11/4 14:00 | 21.9 | 24.6 | 23.4 | 24.5 |
| 11/4 15:00 | 22.0 | 24.6 | 23.4 | 24.5 |
| 11/4 16:00 | 22.0 | 24.6 | 23.5 | 24.5 |
| 11/4 17:00 | 22.1 | 24.6 | 23.6 | 24.5 |
| 11/4 18:00 | 22.1 | 24.6 | 23.5 | 24.5 |
| 11/4 19:00 | 22.1 | 24.6 | 23.6 | 24.5 |
| 11/4 20:00 | 22.1 | 24.6 | 23.6 | 24.5 |
| 11/4 21:00 | 22.1 | 24.6 | 23.6 | 24.5 |
| 11/4 22:00 | 22.1 | 24.6 | 23.6 | 24.5 |
| 11/4 23:00 | 22.1 | 24.6 | 23.7 | 24.5 |
| 11/5 0:00 | 22.1 | 24.6 | 23.6 | 24.5 |
| 11/5 1:00 | 22.0 | 24.6 | 23.6 | 24.5 |
| 11/5 2:00 | 22.0 | 24.6 | 23.6 | 24.5 |
| 11/5 3:00 | 22.0 | 24.6 | 23.6 | 24.5 |
| 11/5 4:00 | 22.0 | 24.6 | 23.6 | 24.5 |
| 11/5 5:00 | 22.0 | 24.6 | 23.6 | 24.5 |
| 11/5 6:00 | 22.0 | 24.6 | 23.6 | 24.5 |
| 11/5 7:00 | 21.9 | 24.6 | 23.5 | 24.5 |
| 11/5 8:00 | 21.9 | 24.7 | 23.5 | 24.5 |
| 11/5 9:00 | 21.9 | 24.6 | 23.5 | 24.5 |
| 11/5 10:00 | 21.9 | 24.6 | 23.5 | 24.5 |
| 11/5 11:00 | 21.8 | 24.6 | 23.4 | 24.5 |
| 11/5 12:00 | 21.9 | 24.7 | 23.4 | 24.5 |
| 11/5 13:00 | 21.9 | 24.7 | 23.4 | 24.5 |
| 11/5 14:00 | 21.9 | 24.6 | 23.4 | 24.5 |
| 11/5 15:00 | 21.9 | 24.6 | 23.4 | 24.5 |
| 11/5 16:00 | 21.9 | 24.6 | 23.5 | 24.5 |
| 11/5 17:00 | 22.0 | 24.6 | 23.4 | 24.5 |
| 11/5 18:00 | 22.0 | 24.7 | 23.4 | 24.5 |
| 11/5 19:00 | 22.0 | 24.6 | 23.5 | 24.5 |
| 11/5 20:00 | 22.0 | 24.6 | 23.5 | 24.5 |
| 11/5 21:00 | 22.0 | 24.6 | 23.5 | 24.5 |
| 11/5 22:00 | 22.0 | 24.6 | 23.5 | 24.5 |
| 11/5 23:00 | 22.0 | 24.6 | 23.5 | 24.5 |
| 11/6 0:00 | 22.0 | 24.6 | 23.5 | 24.5 |
| 11/6 1:00 | 22.0 | 24.7 | 23.5 | 24.5 |
| 11/6 2:00 | 22.0 | 24.7 | 23.5 | 24.5 |
| 11/6 3:00 | 22.0 | 24.7 | 23.5 | 24.5 |
| 11/6 4:00 | 22.0 | 24.7 | 23.5 | 24.5 |
| 11/6 5:00 | 22.0 | 24.6 | 23.5 | 24.5 |
| 11/6 6:00 | 22.0 | 24.7 | 23.5 | 24.5 |
| 11/6 7:00 | 22.0 | 24.7 | 23.5 | 24.5 |
| 11/6 8:00 | 22.0 | 24.7 | 23.5 | 24.5 |
| 11/6 9:00 | 21.9 | 24.7 | 23.5 | 24.5 |
| 11/6 10:00 | 22.0 | 24.7 | 23.5 | 24.5 |
| 11/6 11:00 | 22.0 | 24.6 | 23.5 | 24.5 |
| 11/6 12:00 | 22.0 | 24.7 | 23.5 | 24.5 |