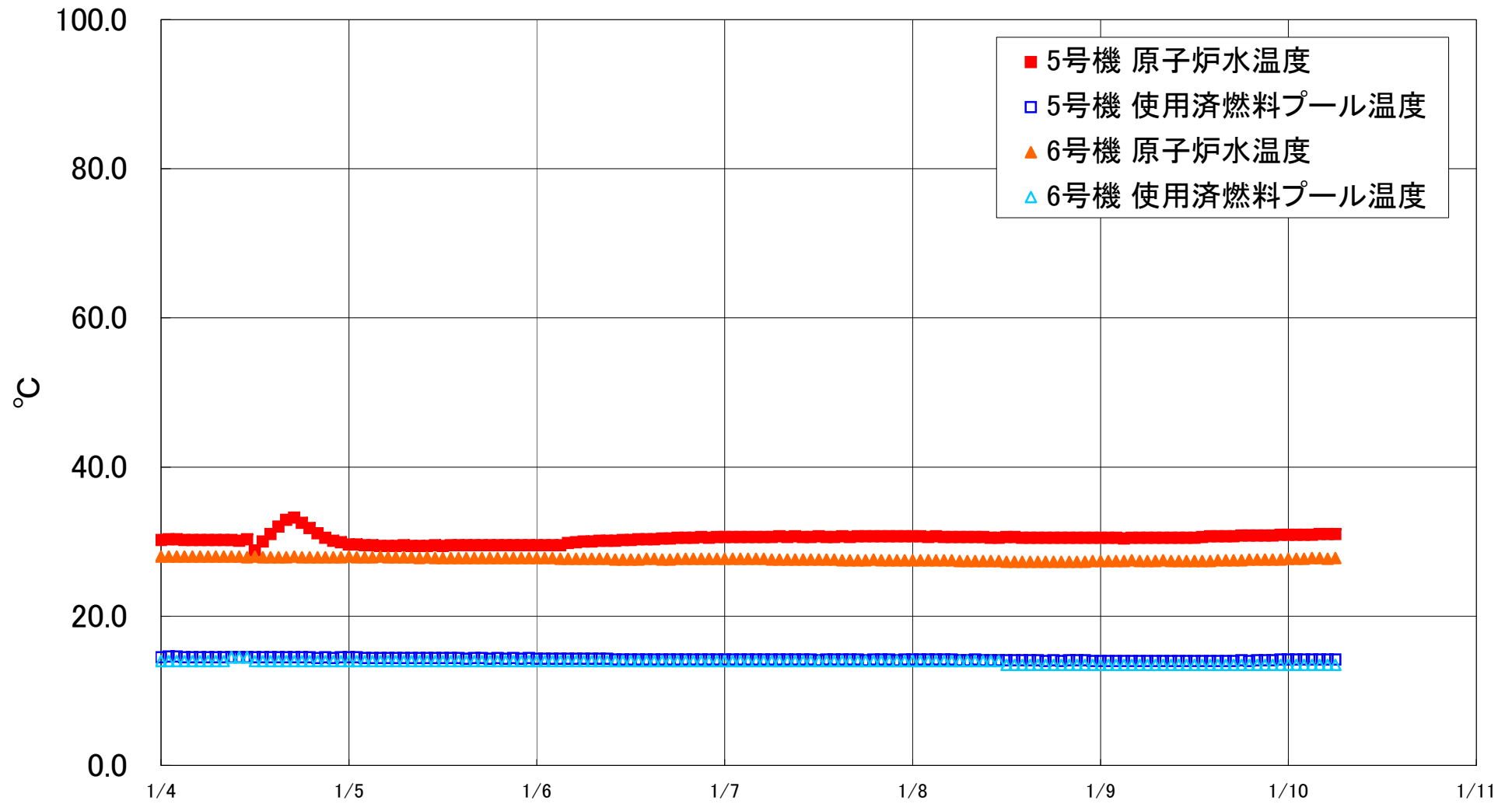


福島第一原子力発電所 5・6号機 原子炉水温度、使用済燃料プール温度推移



福島第一原子力発電所 5・6号機 原子炉水温度・使用済燃料プール温度

| 日時 | 5号機 原子炉水温度 | 5号機 使用済燃料プール温度 | 6号機 原子炉水温度 | 6号機 使用済燃料プール温度 |
|-----------|------------|----------------|------------|----------------|
| 1/7 14:00 | 30.6 | 14.2 | 27.6 | 14.0 |
| 1/7 15:00 | 30.7 | 14.2 | 27.5 | 14.0 |
| 1/7 16:00 | 30.6 | 14.2 | 27.5 | 14.0 |
| 1/7 17:00 | 30.7 | 14.2 | 27.5 | 14.0 |
| 1/7 18:00 | 30.7 | 14.1 | 27.5 | 14.0 |
| 1/7 19:00 | 30.7 | 14.2 | 27.6 | 14.0 |
| 1/7 20:00 | 30.7 | 14.2 | 27.5 | 14.0 |
| 1/7 21:00 | 30.7 | 14.2 | 27.5 | 14.0 |
| 1/7 22:00 | 30.7 | 14.1 | 27.5 | 14.0 |
| 1/7 23:00 | 30.7 | 14.2 | 27.5 | 14.0 |
| 1/8 0:00 | 30.7 | 14.2 | 27.5 | 14.0 |
| 1/8 1:00 | 30.7 | 14.2 | 27.5 | 14.0 |
| 1/8 2:00 | 30.6 | 14.2 | 27.5 | 14.0 |
| 1/8 3:00 | 30.7 | 14.2 | 27.5 | 14.0 |
| 1/8 4:00 | 30.6 | 14.2 | 27.5 | 14.0 |
| 1/8 5:00 | 30.6 | 14.2 | 27.5 | 14.0 |
| 1/8 6:00 | 30.6 | 14.1 | 27.4 | 14.0 |
| 1/8 7:00 | 30.6 | 14.1 | 27.4 | 14.0 |
| 1/8 8:00 | 30.6 | 14.2 | 27.4 | 14.0 |
| 1/8 9:00 | 30.6 | 14.1 | 27.4 | 14.0 |
| 1/8 10:00 | 30.5 | 14.1 | 27.4 | 14.0 |
| 1/8 11:00 | 30.5 | 14.1 | 27.4 | 14.0 |
| 1/8 12:00 | 30.6 | 14.1 | 27.3 | 13.5 |
| 1/8 13:00 | 30.6 | 14.1 | 27.3 | 13.5 |
| 1/8 14:00 | 30.5 | 14.1 | 27.3 | 13.5 |
| 1/8 15:00 | 30.5 | 14.1 | 27.3 | 13.5 |
| 1/8 16:00 | 30.5 | 14.1 | 27.3 | 13.5 |
| 1/8 17:00 | 30.5 | 14.0 | 27.3 | 13.5 |
| 1/8 18:00 | 30.5 | 14.1 | 27.3 | 13.5 |
| 1/8 19:00 | 30.5 | 14.0 | 27.3 | 13.5 |
| 1/8 20:00 | 30.5 | 14.1 | 27.3 | 13.5 |
| 1/8 21:00 | 30.5 | 14.1 | 27.3 | 13.5 |
| 1/8 22:00 | 30.5 | 14.1 | 27.3 | 13.5 |
| 1/8 23:00 | 30.5 | 14.0 | 27.4 | 13.5 |
| 1/9 0:00 | 30.5 | 14.0 | 27.4 | 13.5 |
| 1/9 1:00 | 30.5 | 14.0 | 27.4 | 13.5 |
| 1/9 2:00 | 30.5 | 14.0 | 27.4 | 13.5 |
| 1/9 3:00 | 30.4 | 14.0 | 27.4 | 13.5 |
| 1/9 4:00 | 30.5 | 14.0 | 27.5 | 13.5 |
| 1/9 5:00 | 30.5 | 14.0 | 27.4 | 13.5 |
| 1/9 6:00 | 30.5 | 14.0 | 27.4 | 13.5 |
| 1/9 7:00 | 30.5 | 14.0 | 27.4 | 13.5 |
| 1/9 8:00 | 30.5 | 14.0 | 27.5 | 13.5 |
| 1/9 9:00 | 30.5 | 14.0 | 27.4 | 13.5 |
| 1/9 10:00 | 30.5 | 14.0 | 27.4 | 13.5 |
| 1/9 11:00 | 30.5 | 14.0 | 27.4 | 13.5 |
| 1/9 12:00 | 30.5 | 14.0 | 27.4 | 13.5 |
| 1/9 13:00 | 30.6 | 14.0 | 27.4 | 13.5 |
| 1/9 14:00 | 30.7 | 14.0 | 27.4 | 13.5 |
| 1/9 15:00 | 30.7 | 14.0 | 27.5 | 13.5 |
| 1/9 16:00 | 30.7 | 14.0 | 27.5 | 13.5 |
| 1/9 17:00 | 30.7 | 14.0 | 27.5 | 13.5 |
| 1/9 18:00 | 30.8 | 14.1 | 27.5 | 13.5 |
| 1/9 19:00 | 30.8 | 14.0 | 27.6 | 13.5 |
| 1/9 20:00 | 30.8 | 14.1 | 27.6 | 13.5 |
| 1/9 21:00 | 30.8 | 14.1 | 27.6 | 13.5 |
| 1/9 22:00 | 30.8 | 14.1 | 27.6 | 13.5 |
| 1/9 23:00 | 30.9 | 14.2 | 27.6 | 13.5 |
| 1/10 0:00 | 30.9 | 14.2 | 27.7 | 13.5 |
| 1/10 1:00 | 30.9 | 14.2 | 27.7 | 13.5 |
| 1/10 2:00 | 30.9 | 14.2 | 27.7 | 13.5 |
| 1/10 3:00 | 30.9 | 14.2 | 27.8 | 13.5 |
| 1/10 4:00 | 31.0 | 14.2 | 27.8 | 13.5 |
| 1/10 5:00 | 31.0 | 14.2 | 27.7 | 13.5 |
| 1/10 6:00 | 31.0 | 14.2 | 27.8 | 13.5 |