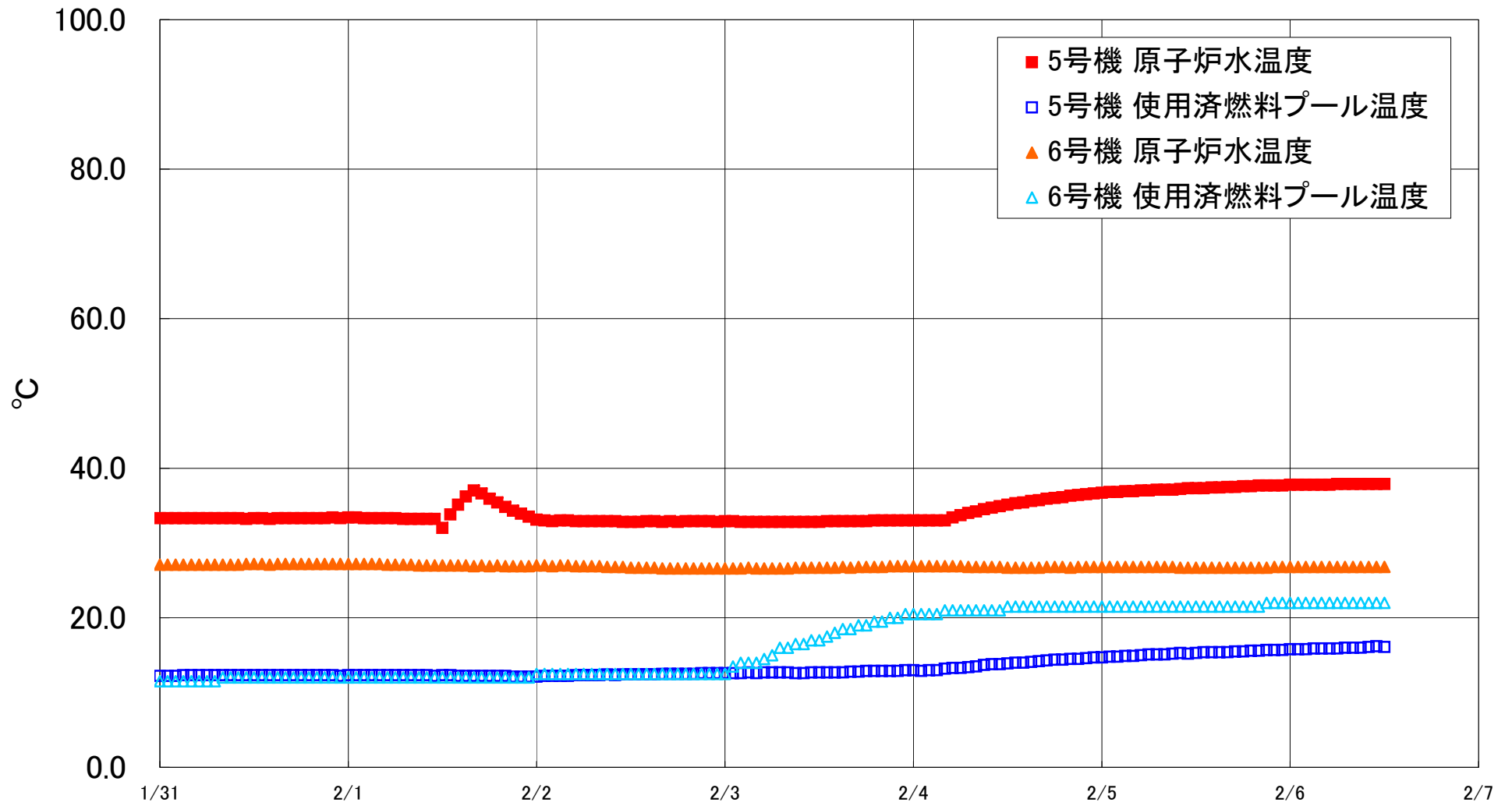


福島第一原子力発電所 5・6号機 原子炉水温度、使用済燃料プール温度推移



福島第一原子力発電所 5・6号機 原子炉水温度・使用済燃料プール温度

| 日時 | 5号機 原子炉水温度 | 5号機 使用済燃料プール温度 | 6号機 原子炉水温度 | 6号機 使用済燃料プール温度 |
|-----------|------------|----------------|------------|----------------|
| 2/3 20:00 | 33.0 | 12.9 | 26.8 | 19.5 |
| 2/3 21:00 | 33.0 | 12.9 | 26.9 | 20.0 |
| 2/3 22:00 | 33.0 | 12.9 | 26.9 | 20.0 |
| 2/3 23:00 | 33.0 | 13.0 | 26.9 | 20.5 |
| 2/4 0:00 | 33.0 | 13.0 | 26.9 | 20.5 |
| 2/4 1:00 | 33.0 | 12.9 | 26.9 | 20.5 |
| 2/4 2:00 | 33.0 | 13.0 | 26.9 | 20.5 |
| 2/4 3:00 | 33.0 | 13.0 | 26.9 | 20.5 |
| 2/4 4:00 | 33.0 | 13.2 | 26.9 | 21.0 |
| 2/4 5:00 | 33.4 | 13.3 | 26.9 | 21.0 |
| 2/4 6:00 | 33.7 | 13.3 | 26.9 | 21.0 |
| 2/4 7:00 | 34.0 | 13.4 | 26.8 | 21.0 |
| 2/4 8:00 | 34.2 | 13.5 | 26.8 | 21.0 |
| 2/4 9:00 | 34.5 | 13.7 | 26.8 | 21.0 |
| 2/4 10:00 | 34.7 | 13.8 | 26.8 | 21.0 |
| 2/4 11:00 | 34.9 | 13.8 | 26.8 | 21.0 |
| 2/4 12:00 | 35.1 | 13.9 | 26.7 | 21.5 |
| 2/4 13:00 | 35.3 | 14.0 | 26.7 | 21.5 |
| 2/4 14:00 | 35.4 | 14.0 | 26.7 | 21.5 |
| 2/4 15:00 | 35.6 | 14.1 | 26.7 | 21.5 |
| 2/4 16:00 | 35.7 | 14.2 | 26.7 | 21.5 |
| 2/4 17:00 | 35.9 | 14.3 | 26.8 | 21.5 |
| 2/4 18:00 | 36.0 | 14.4 | 26.8 | 21.5 |
| 2/4 19:00 | 36.1 | 14.4 | 26.8 | 21.5 |
| 2/4 20:00 | 36.3 | 14.5 | 26.7 | 21.5 |
| 2/4 21:00 | 36.4 | 14.5 | 26.8 | 21.5 |
| 2/4 22:00 | 36.5 | 14.6 | 26.8 | 21.5 |
| 2/4 23:00 | 36.6 | 14.7 | 26.8 | 21.5 |
| 2/5 0:00 | 36.7 | 14.7 | 26.8 | 21.5 |
| 2/5 1:00 | 36.8 | 14.8 | 26.8 | 21.5 |
| 2/5 2:00 | 36.8 | 14.8 | 26.8 | 21.5 |
| 2/5 3:00 | 36.9 | 14.9 | 26.8 | 21.5 |
| 2/5 4:00 | 36.9 | 14.9 | 26.8 | 21.5 |
| 2/5 5:00 | 37.0 | 15.0 | 26.8 | 21.5 |
| 2/5 6:00 | 37.0 | 15.1 | 26.8 | 21.5 |
| 2/5 7:00 | 37.1 | 15.1 | 26.8 | 21.5 |
| 2/5 8:00 | 37.1 | 15.1 | 26.8 | 21.5 |
| 2/5 9:00 | 37.1 | 15.2 | 26.8 | 21.5 |
| 2/5 10:00 | 37.2 | 15.3 | 26.7 | 21.5 |
| 2/5 11:00 | 37.3 | 15.2 | 26.7 | 21.5 |
| 2/5 12:00 | 37.3 | 15.3 | 26.7 | 21.5 |
| 2/5 13:00 | 37.3 | 15.4 | 26.7 | 21.5 |
| 2/5 14:00 | 37.4 | 15.4 | 26.7 | 21.5 |
| 2/5 15:00 | 37.4 | 15.4 | 26.7 | 21.5 |
| 2/5 16:00 | 37.5 | 15.4 | 26.7 | 21.5 |
| 2/5 17:00 | 37.5 | 15.5 | 26.7 | 21.5 |
| 2/5 18:00 | 37.6 | 15.5 | 26.7 | 21.5 |
| 2/5 19:00 | 37.6 | 15.6 | 26.7 | 21.5 |
| 2/5 20:00 | 37.7 | 15.6 | 26.7 | 21.5 |
| 2/5 21:00 | 37.7 | 15.7 | 26.7 | 22.0 |
| 2/5 22:00 | 37.7 | 15.7 | 26.8 | 22.0 |
| 2/5 23:00 | 37.7 | 15.7 | 26.8 | 22.0 |
| 2/6 0:00 | 37.8 | 15.8 | 26.8 | 22.0 |
| 2/6 1:00 | 37.8 | 15.8 | 26.8 | 22.0 |
| 2/6 2:00 | 37.8 | 15.8 | 26.8 | 22.0 |
| 2/6 3:00 | 37.8 | 15.9 | 26.8 | 22.0 |
| 2/6 4:00 | 37.8 | 15.9 | 26.8 | 22.0 |
| 2/6 5:00 | 37.8 | 15.9 | 26.8 | 22.0 |
| 2/6 6:00 | 37.9 | 15.9 | 26.8 | 22.0 |
| 2/6 7:00 | 37.9 | 16.0 | 26.8 | 22.0 |
| 2/6 8:00 | 37.9 | 16.0 | 26.8 | 22.0 |
| 2/6 9:00 | 37.9 | 16.0 | 26.8 | 22.0 |
| 2/6 10:00 | 37.9 | 16.1 | 26.8 | 22.0 |
| 2/6 11:00 | 37.9 | 16.2 | 26.8 | 22.0 |
| 2/6 12:00 | 37.9 | 16.1 | 26.8 | 22.0 |