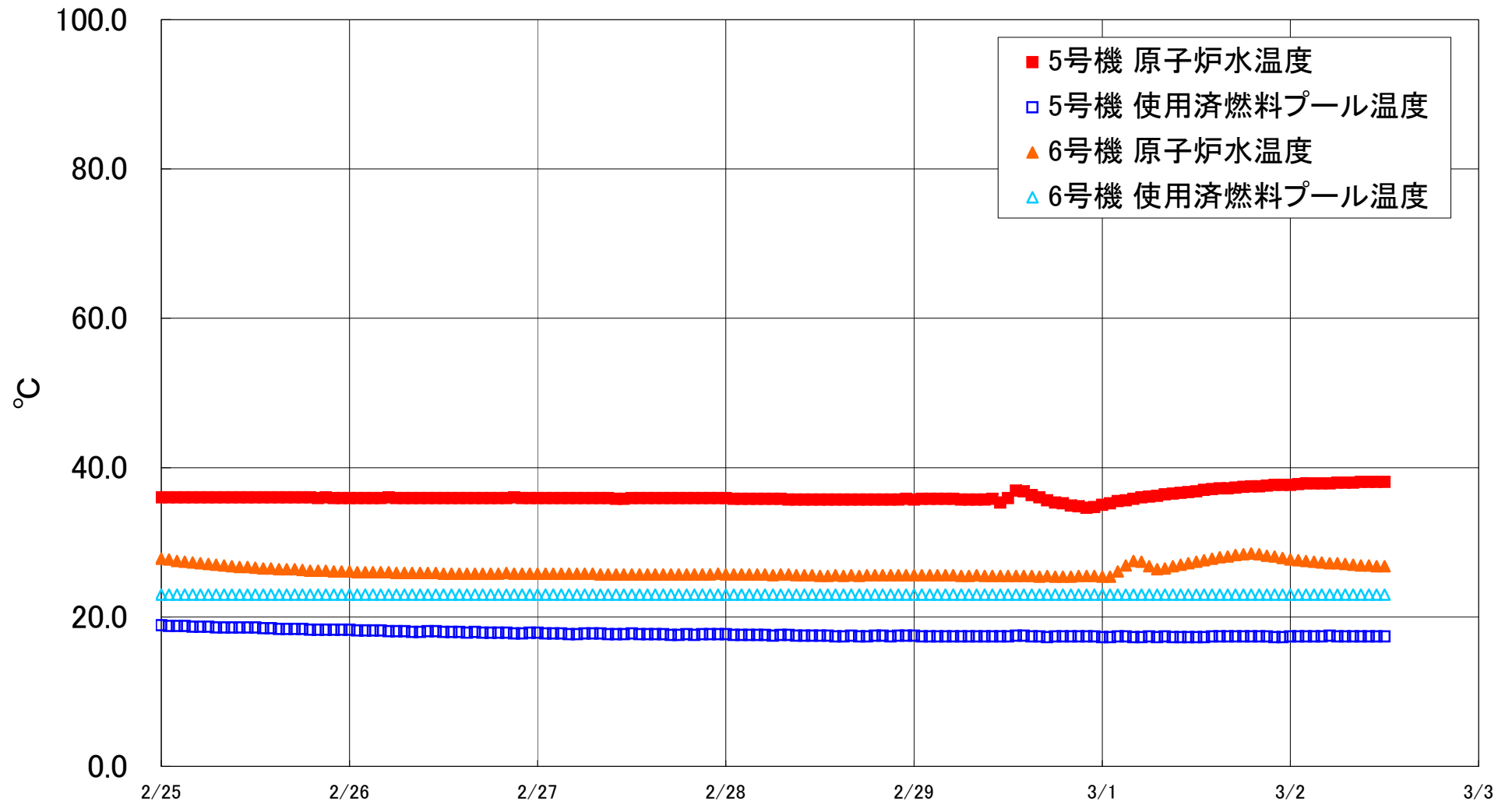


福島第一原子力発電所 5・6号機 原子炉水温度、使用済燃料プール温度推移



福島第一原子力発電所 5・6号機 原子炉水温度・使用済燃料プール温度

| 日時 | 5号機 原子炉水温度 | 5号機 使用済燃料プール温度 | 6号機 原子炉水温度 | 6号機 使用済燃料プール温度 |
|------------|------------|----------------|------------|----------------|
| 2/28 20:00 | 35.7 | 17.5 | 25.6 | 23.0 |
| 2/28 21:00 | 35.7 | 17.4 | 25.6 | 23.0 |
| 2/28 22:00 | 35.7 | 17.5 | 25.6 | 23.0 |
| 2/28 23:00 | 35.8 | 17.5 | 25.6 | 23.0 |
| 2/29 0:00 | 35.7 | 17.5 | 25.6 | 23.0 |
| 2/29 1:00 | 35.8 | 17.4 | 25.6 | 23.0 |
| 2/29 2:00 | 35.8 | 17.4 | 25.6 | 23.0 |
| 2/29 3:00 | 35.8 | 17.4 | 25.6 | 23.0 |
| 2/29 4:00 | 35.8 | 17.4 | 25.6 | 23.0 |
| 2/29 5:00 | 35.8 | 17.4 | 25.6 | 23.0 |
| 2/29 6:00 | 35.7 | 17.4 | 25.5 | 23.0 |
| 2/29 7:00 | 35.7 | 17.4 | 25.5 | 23.0 |
| 2/29 8:00 | 35.7 | 17.4 | 25.6 | 23.0 |
| 2/29 9:00 | 35.7 | 17.4 | 25.5 | 23.0 |
| 2/29 10:00 | 35.8 | 17.4 | 25.5 | 23.0 |
| 2/29 11:00 | 35.3 | 17.4 | 25.5 | 23.0 |
| 2/29 12:00 | 35.9 | 17.4 | 25.5 | 23.0 |
| 2/29 13:00 | 36.9 | 17.5 | 25.5 | 23.0 |
| 2/29 14:00 | 36.8 | 17.5 | 25.5 | 23.0 |
| 2/29 15:00 | 36.3 | 17.4 | 25.5 | 23.0 |
| 2/29 16:00 | 36.0 | 17.4 | 25.4 | 23.0 |
| 2/29 17:00 | 35.6 | 17.3 | 25.5 | 23.0 |
| 2/29 18:00 | 35.3 | 17.4 | 25.4 | 23.0 |
| 2/29 19:00 | 35.2 | 17.4 | 25.4 | 23.0 |
| 2/29 20:00 | 34.9 | 17.4 | 25.4 | 23.0 |
| 2/29 21:00 | 34.8 | 17.4 | 25.5 | 23.0 |
| 2/29 22:00 | 34.6 | 17.4 | 25.5 | 23.0 |
| 2/29 23:00 | 34.7 | 17.4 | 25.5 | 23.0 |
| 3/1 0:00 | 35.0 | 17.3 | 25.4 | 23.0 |
| 3/1 1:00 | 35.2 | 17.3 | 25.4 | 23.0 |
| 3/1 2:00 | 35.5 | 17.4 | 26.1 | 23.0 |
| 3/1 3:00 | 35.6 | 17.4 | 26.9 | 23.0 |
| 3/1 4:00 | 35.8 | 17.3 | 27.5 | 23.0 |
| 3/1 5:00 | 36.0 | 17.3 | 27.4 | 23.0 |
| 3/1 6:00 | 36.1 | 17.4 | 26.8 | 23.0 |
| 3/1 7:00 | 36.2 | 17.3 | 26.4 | 23.0 |
| 3/1 8:00 | 36.4 | 17.4 | 26.5 | 23.0 |
| 3/1 9:00 | 36.5 | 17.3 | 26.8 | 23.0 |
| 3/1 10:00 | 36.6 | 17.3 | 27.0 | 23.0 |
| 3/1 11:00 | 36.7 | 17.3 | 27.2 | 23.0 |
| 3/1 12:00 | 36.8 | 17.3 | 27.4 | 23.0 |
| 3/1 13:00 | 37.0 | 17.3 | 27.6 | 23.0 |
| 3/1 14:00 | 37.1 | 17.4 | 27.8 | 23.0 |
| 3/1 15:00 | 37.2 | 17.4 | 28.0 | 23.0 |
| 3/1 16:00 | 37.2 | 17.4 | 28.1 | 23.0 |
| 3/1 17:00 | 37.3 | 17.4 | 28.3 | 23.0 |
| 3/1 18:00 | 37.4 | 17.4 | 28.4 | 23.0 |
| 3/1 19:00 | 37.5 | 17.4 | 28.5 | 23.0 |
| 3/1 20:00 | 37.5 | 17.4 | 28.4 | 23.0 |
| 3/1 21:00 | 37.6 | 17.4 | 28.2 | 23.0 |
| 3/1 22:00 | 37.7 | 17.3 | 28.1 | 23.0 |
| 3/1 23:00 | 37.7 | 17.3 | 27.9 | 23.0 |
| 3/2 0:00 | 37.7 | 17.4 | 27.7 | 23.0 |
| 3/2 1:00 | 37.8 | 17.4 | 27.6 | 23.0 |
| 3/2 2:00 | 37.9 | 17.4 | 27.5 | 23.0 |
| 3/2 3:00 | 37.9 | 17.4 | 27.4 | 23.0 |
| 3/2 4:00 | 37.9 | 17.4 | 27.3 | 23.0 |
| 3/2 5:00 | 37.9 | 17.5 | 27.2 | 23.0 |
| 3/2 6:00 | 38.0 | 17.4 | 27.2 | 23.0 |
| 3/2 7:00 | 38.0 | 17.4 | 27.1 | 23.0 |
| 3/2 8:00 | 38.0 | 17.4 | 27.0 | 23.0 |
| 3/2 9:00 | 38.1 | 17.4 | 26.9 | 23.0 |
| 3/2 10:00 | 38.1 | 17.4 | 26.9 | 23.0 |
| 3/2 11:00 | 38.1 | 17.4 | 26.8 | 23.0 |
| 3/2 12:00 | 38.1 | 17.4 | 26.8 | 23.0 |