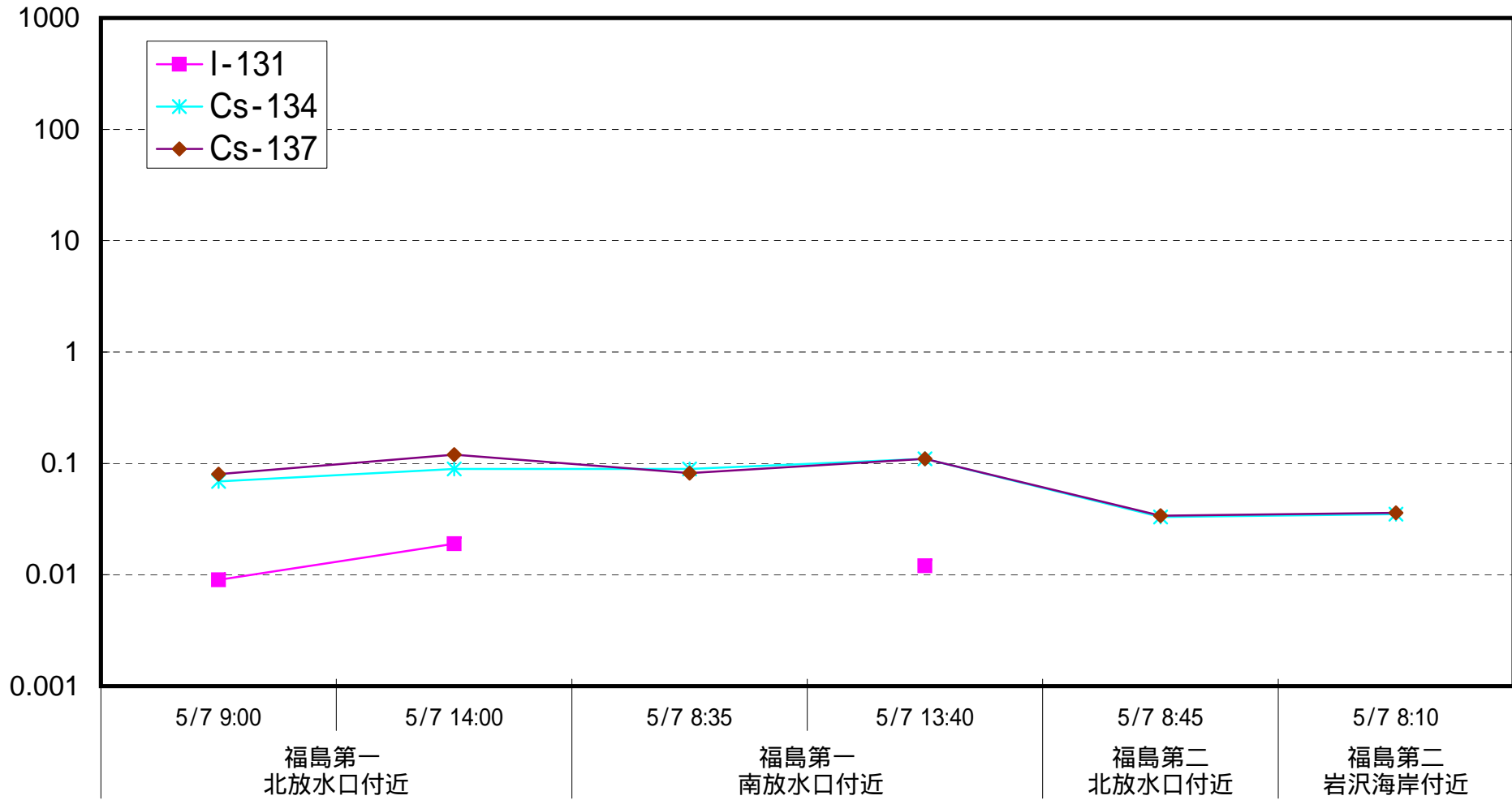
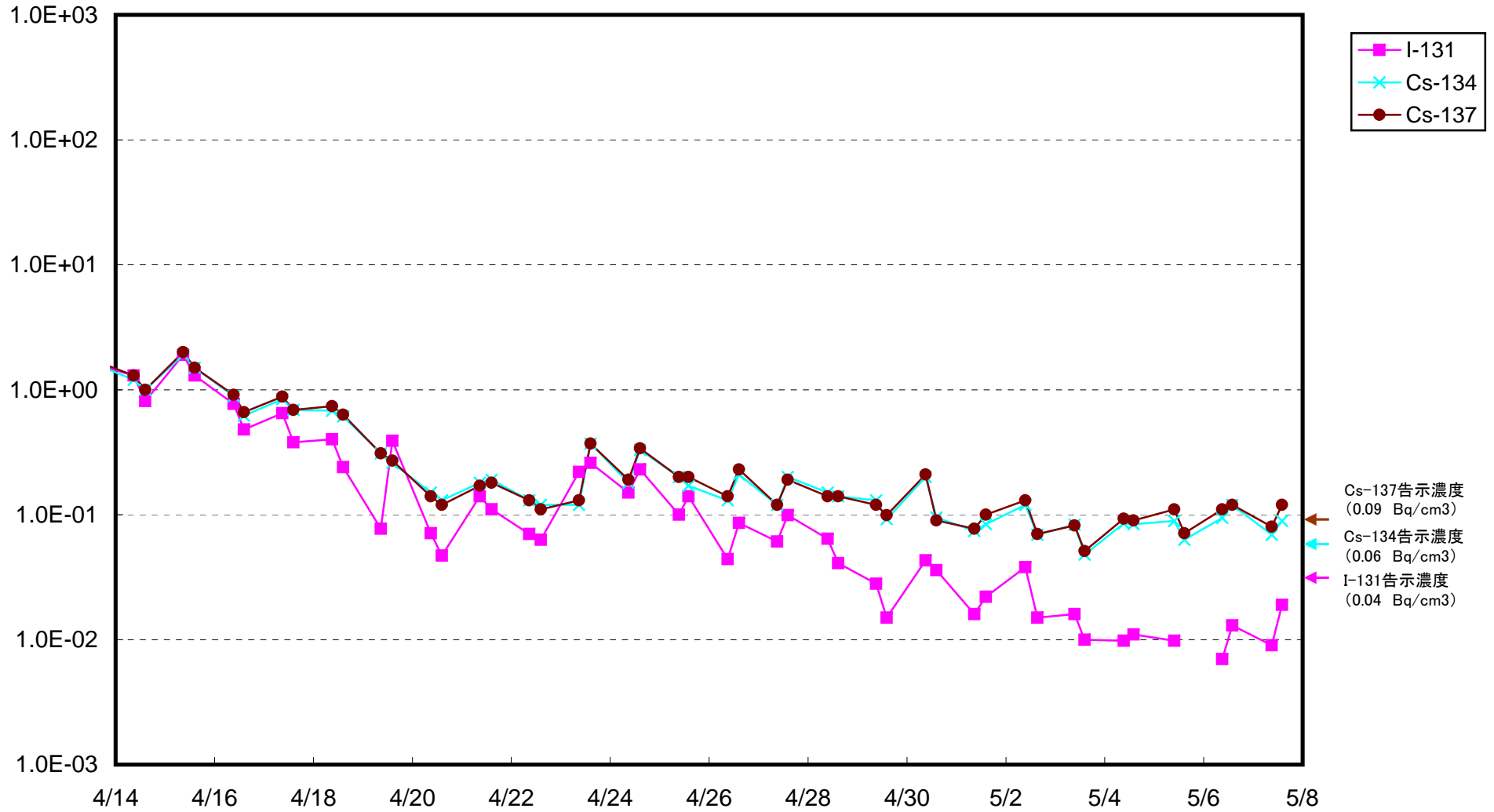


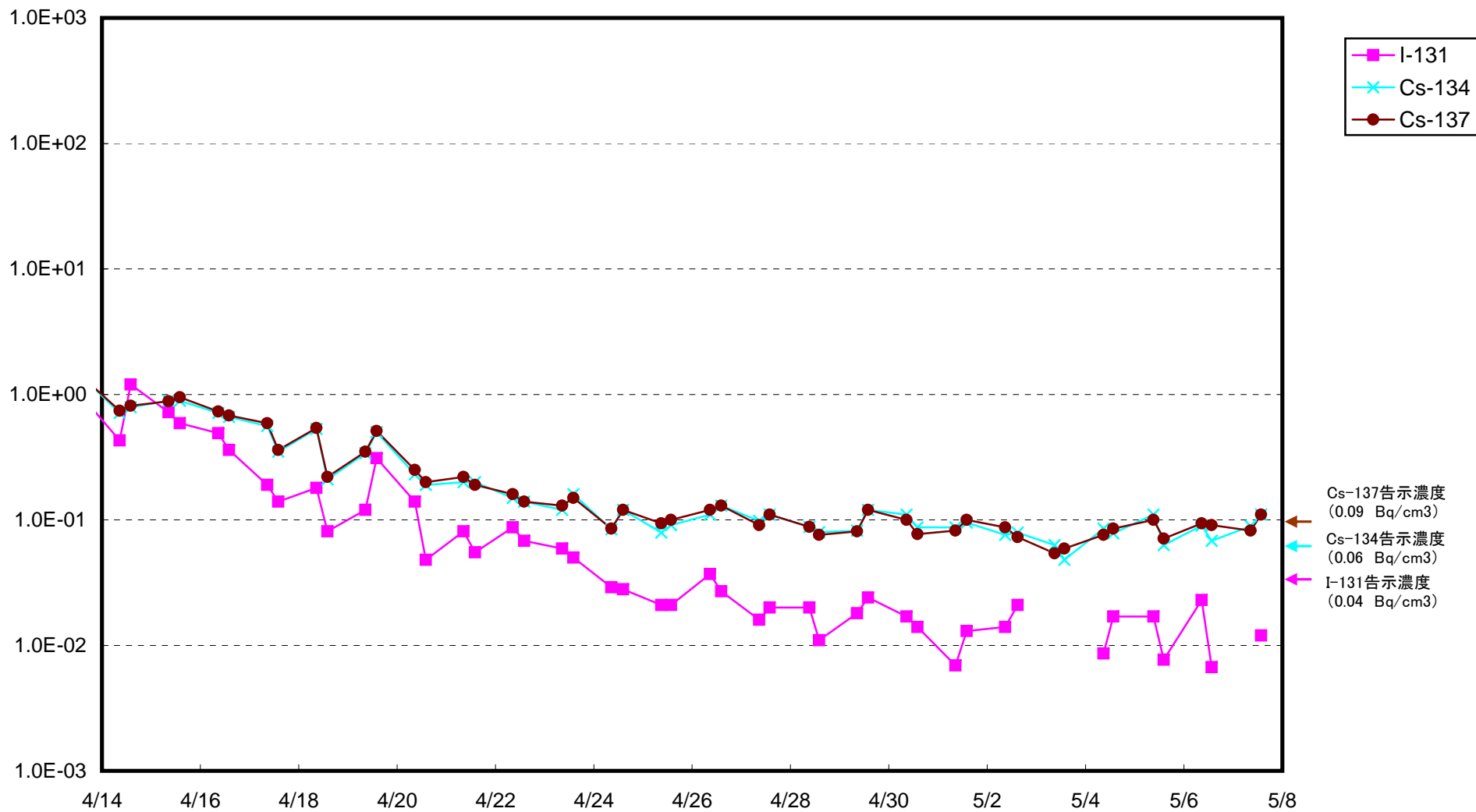
海水放射能濃度 (Bq / cm<sup>3</sup>)



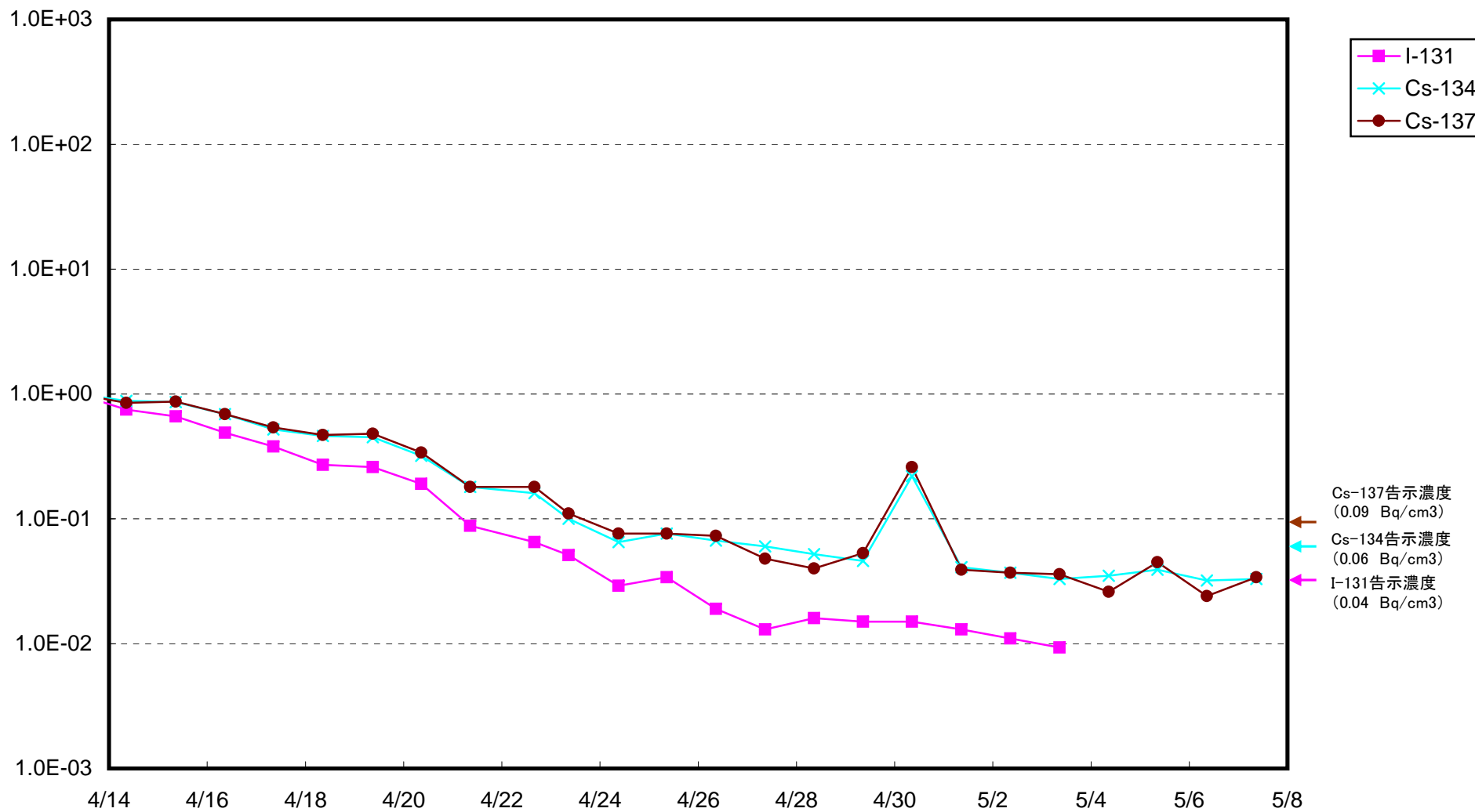
福島第一 5,6放水口北側(5,6u放水口から北側に約30m地点)放射能濃度(Bq/cm<sup>3</sup>)



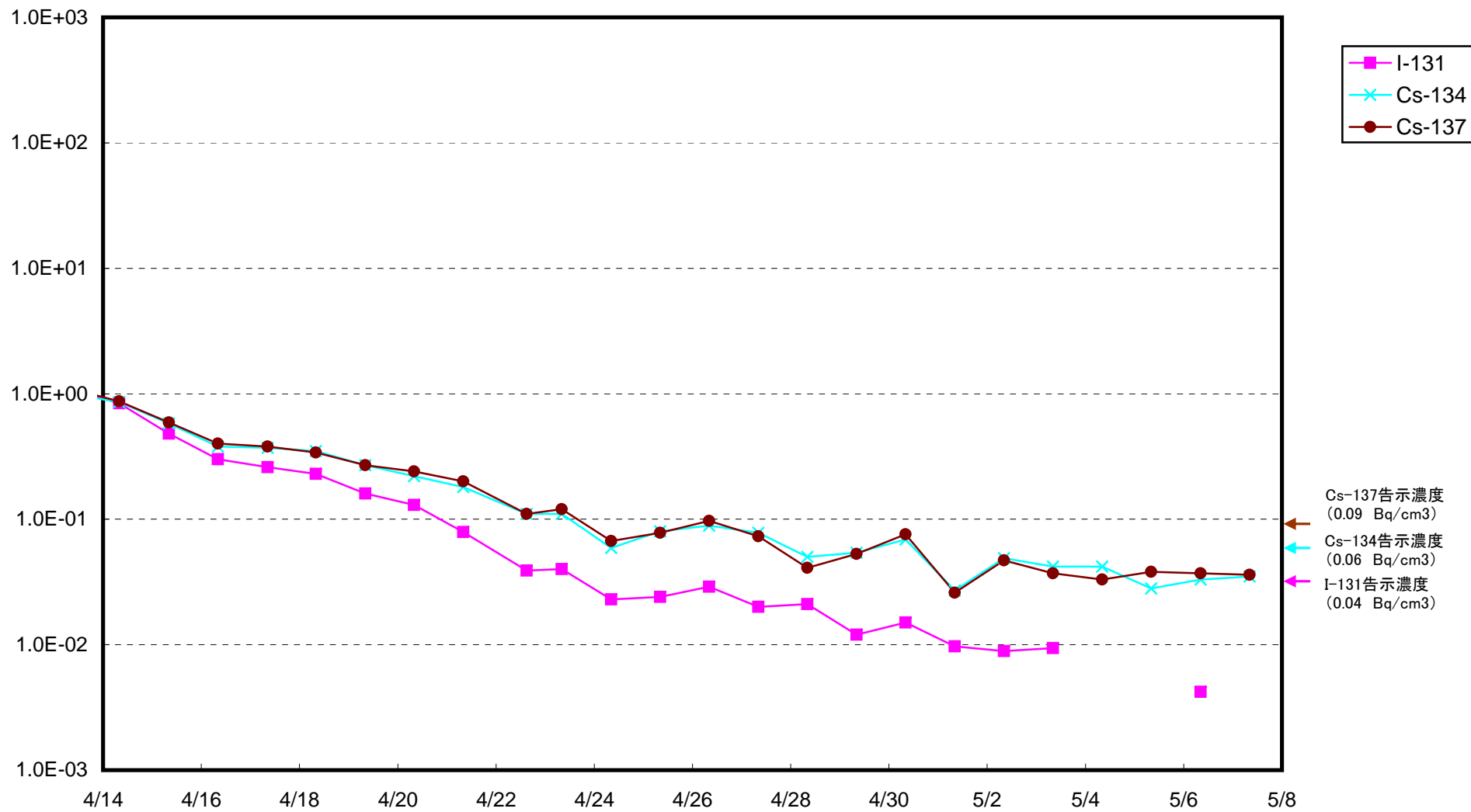
福島第一 南放水口付近 海水放射能濃度(Bq/cm<sup>3</sup>)



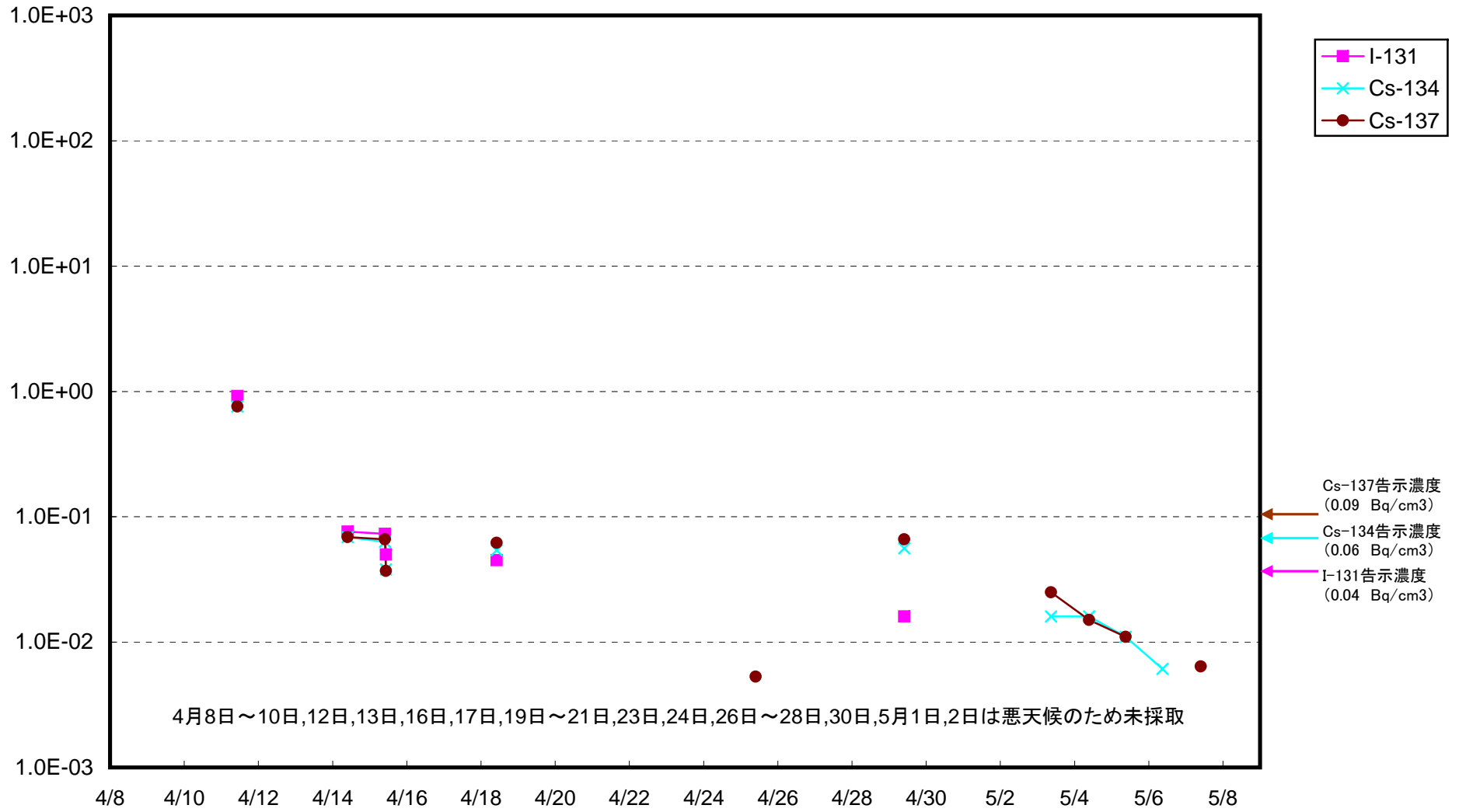
福島第二 北側放水口付近 海水放射能濃度(Bq/cm<sup>3</sup>)



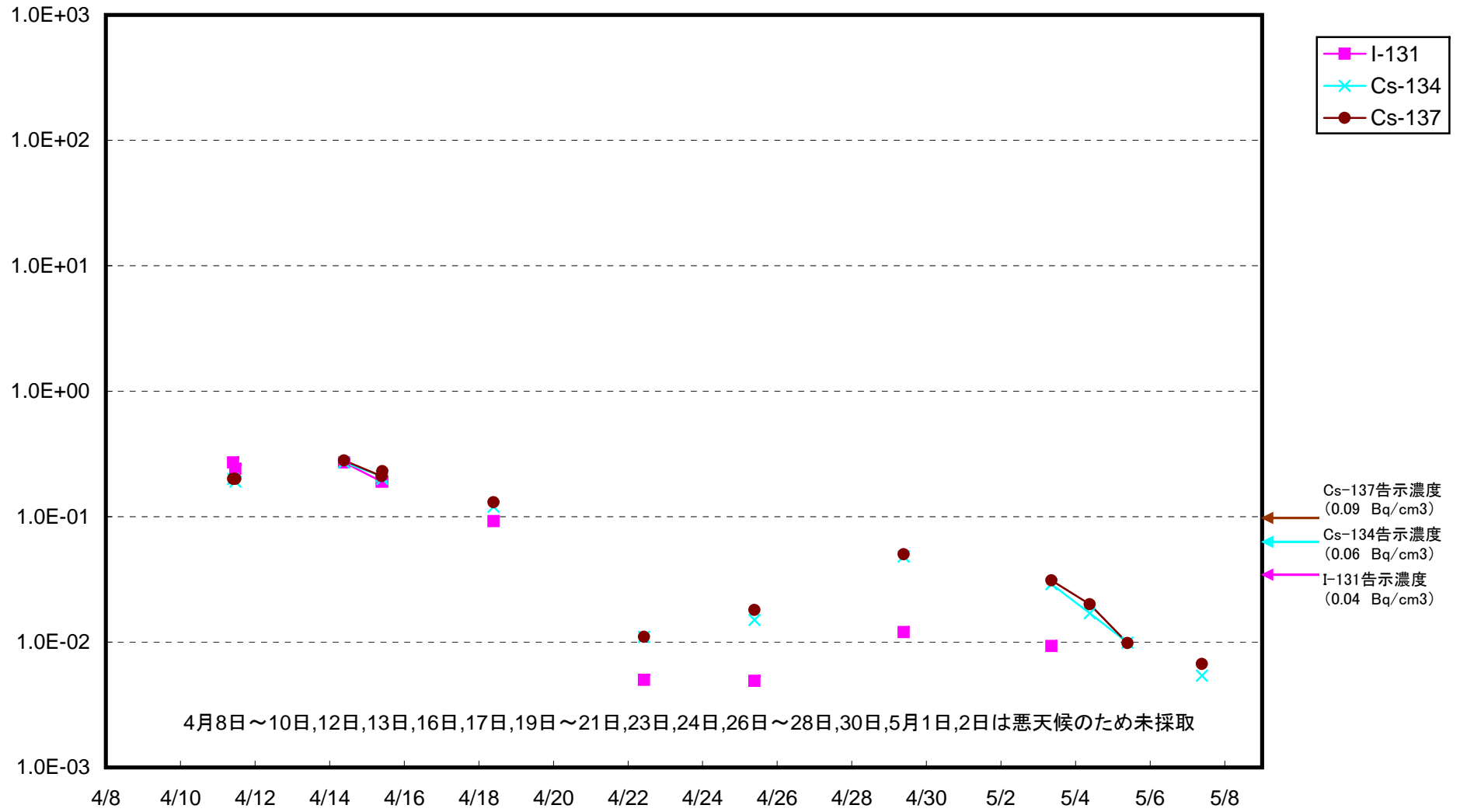
福島第二 岩沢海岸付近 海水放射能濃度(Bq/cm<sup>3</sup>)



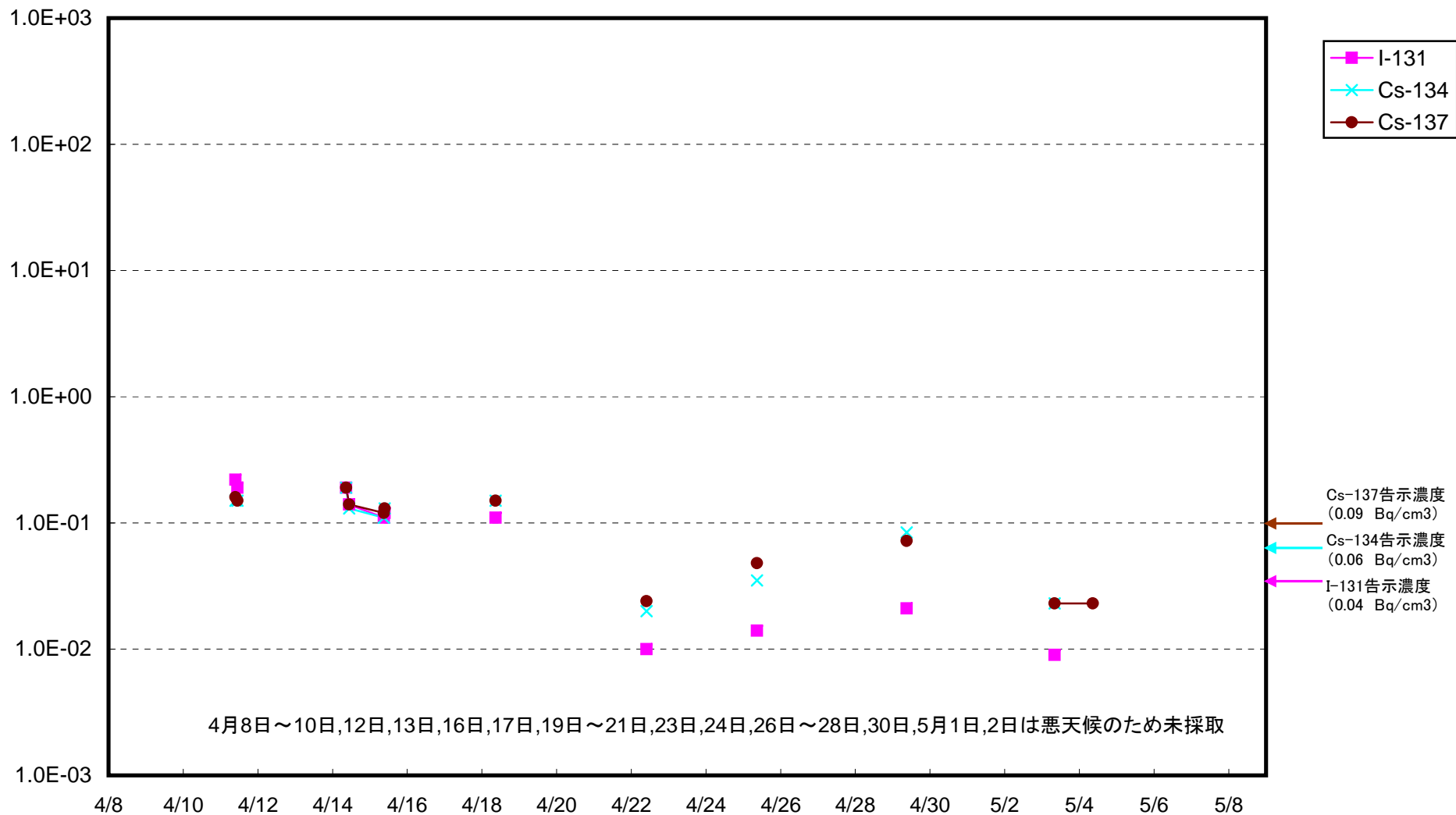
南相馬市沖合約15km付近 海水放射能濃度 (Bq/cm<sup>3</sup>)



請戸川沖合約15km付近 海水放射能濃度(Bq/cm<sup>3</sup>)

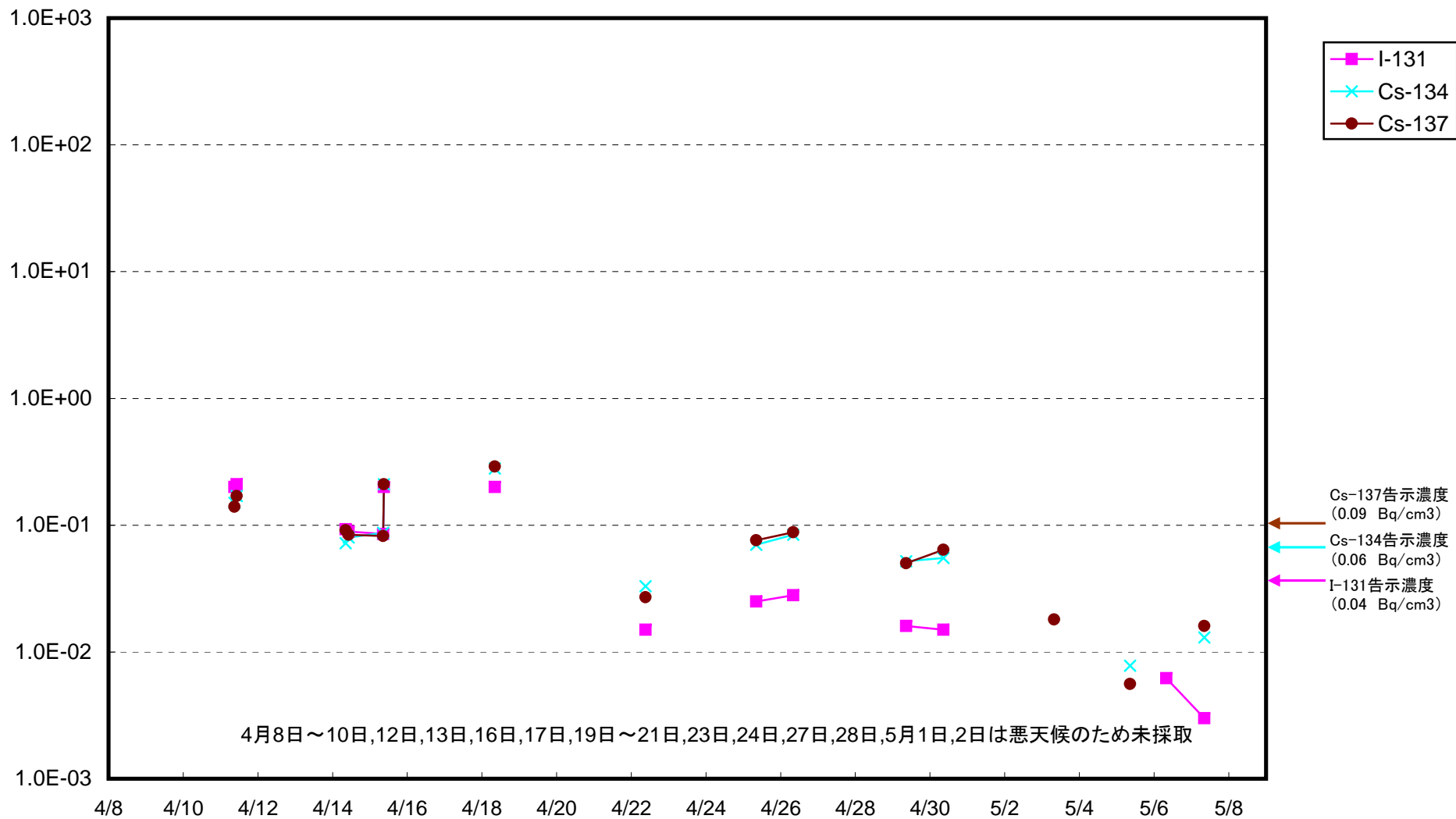


福島第一 敷地沖合約15km付近 海水放射能濃度(Bq/cm<sup>3</sup>)

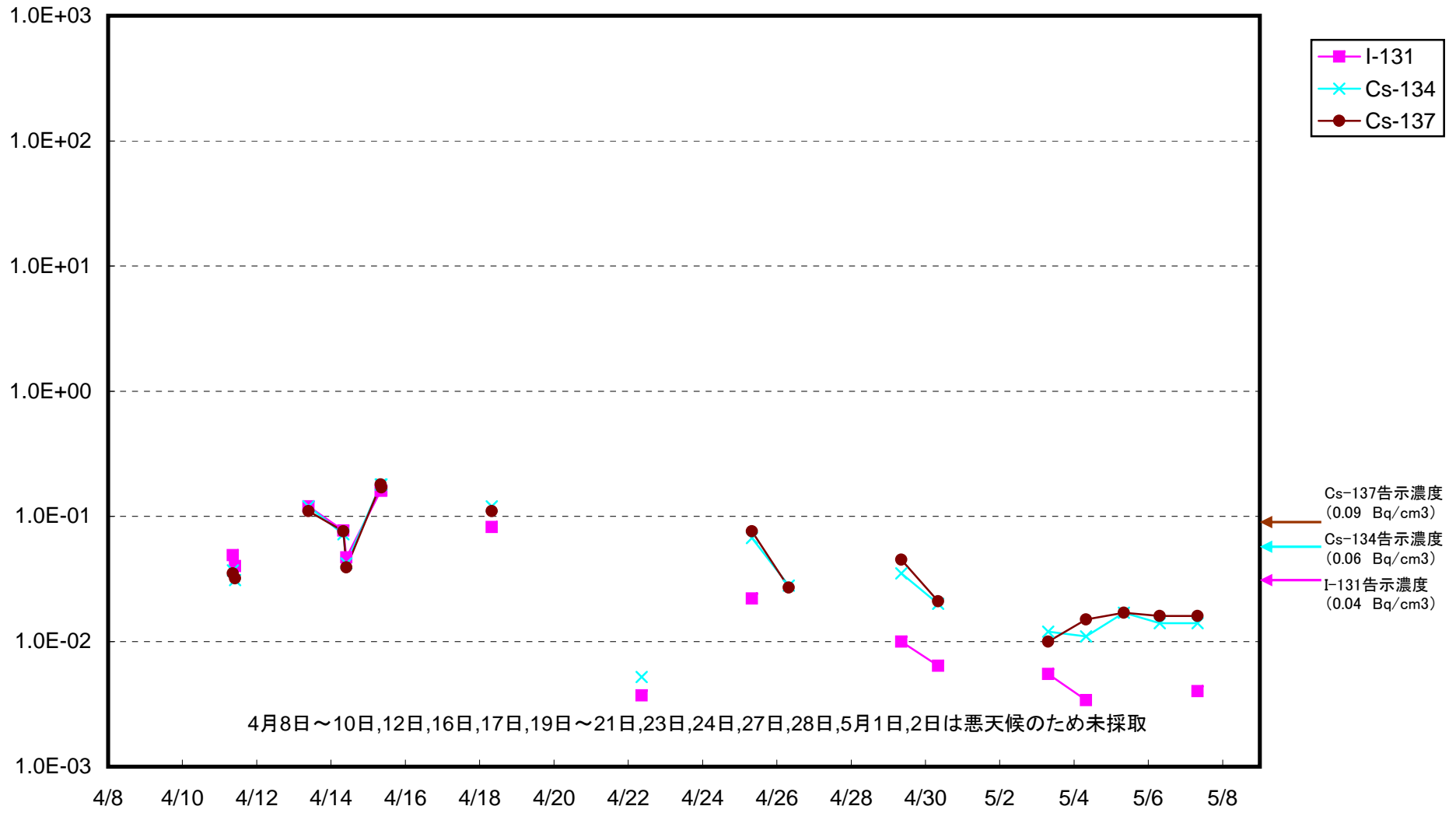




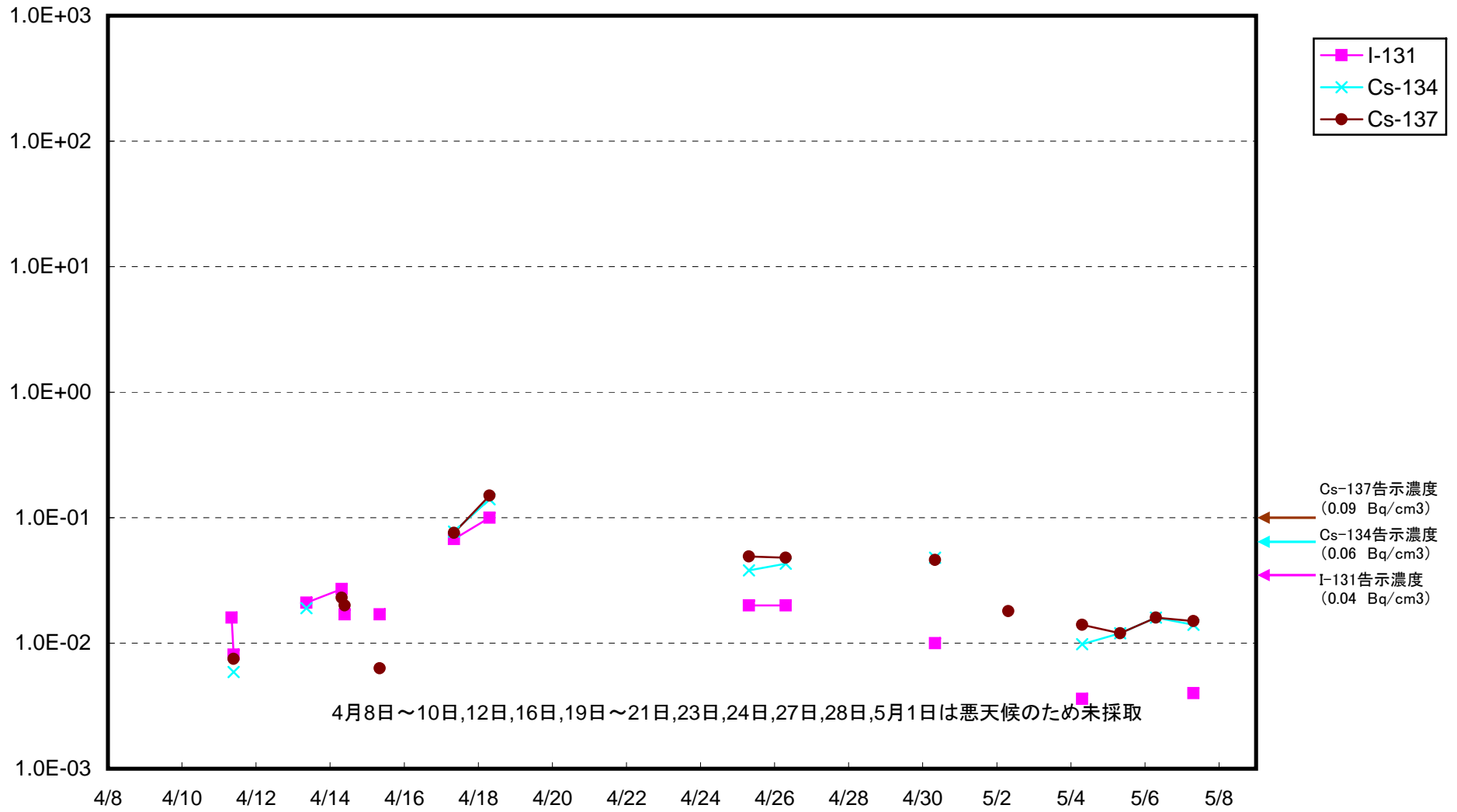
福島第二 敷地沖合約15km付近 海水放射能濃度(Bq/cm<sup>3</sup>)



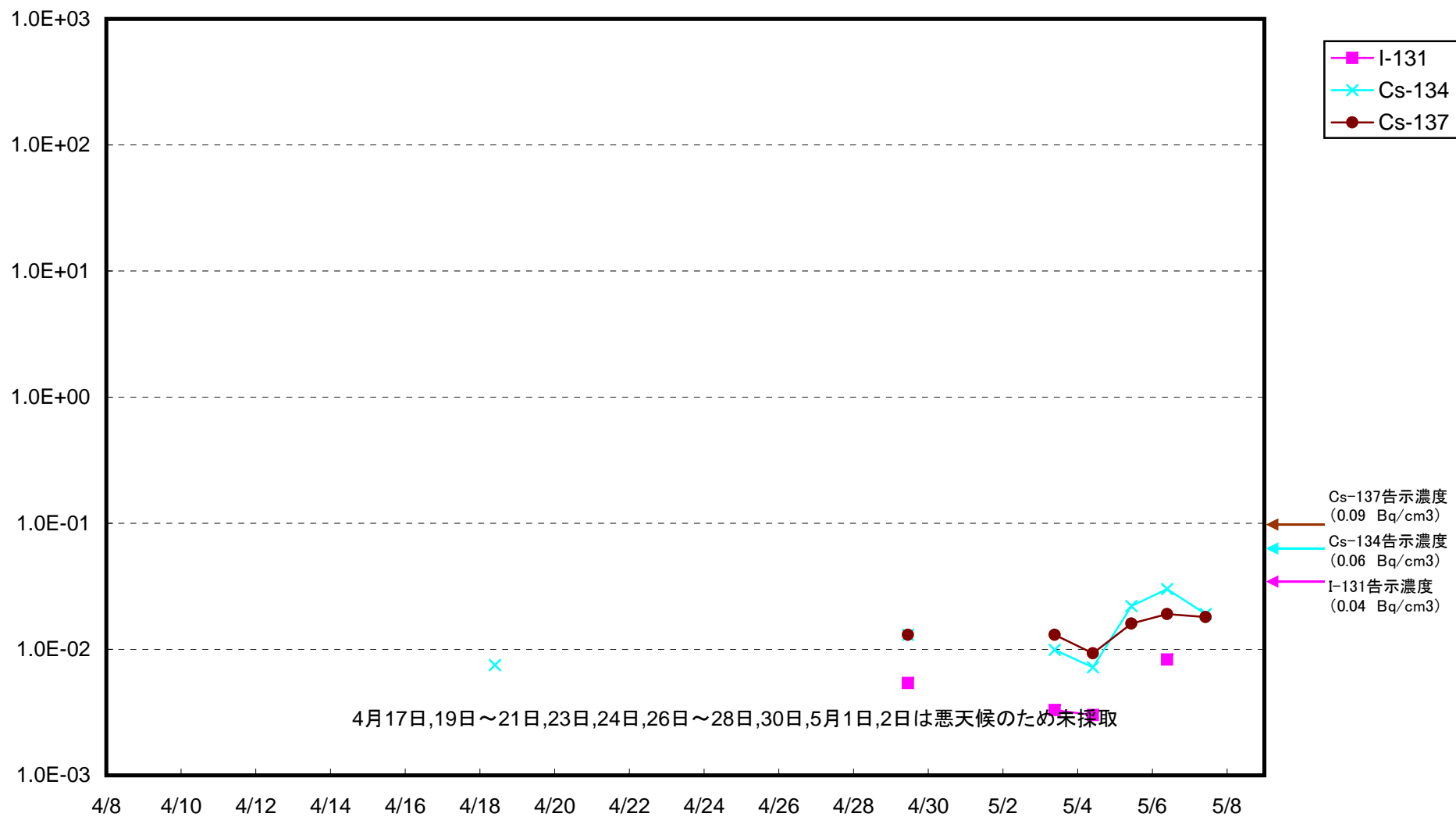
岩沢海岸沖合約15km付近 海水放射能濃度 (Bq/cm<sup>3</sup>)



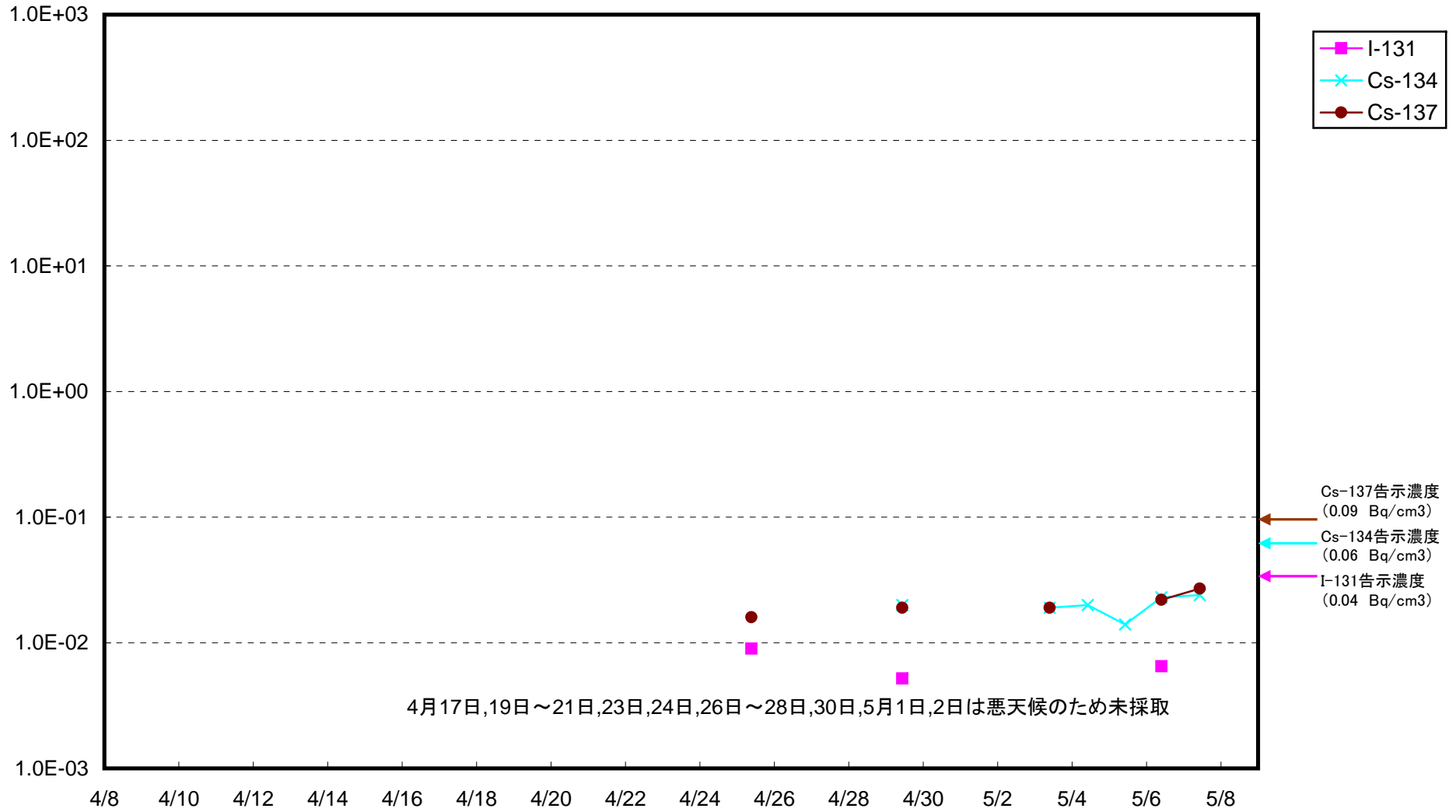
広野町沖合約15km付近 海水放射能濃度(Bq/cm<sup>3</sup>)



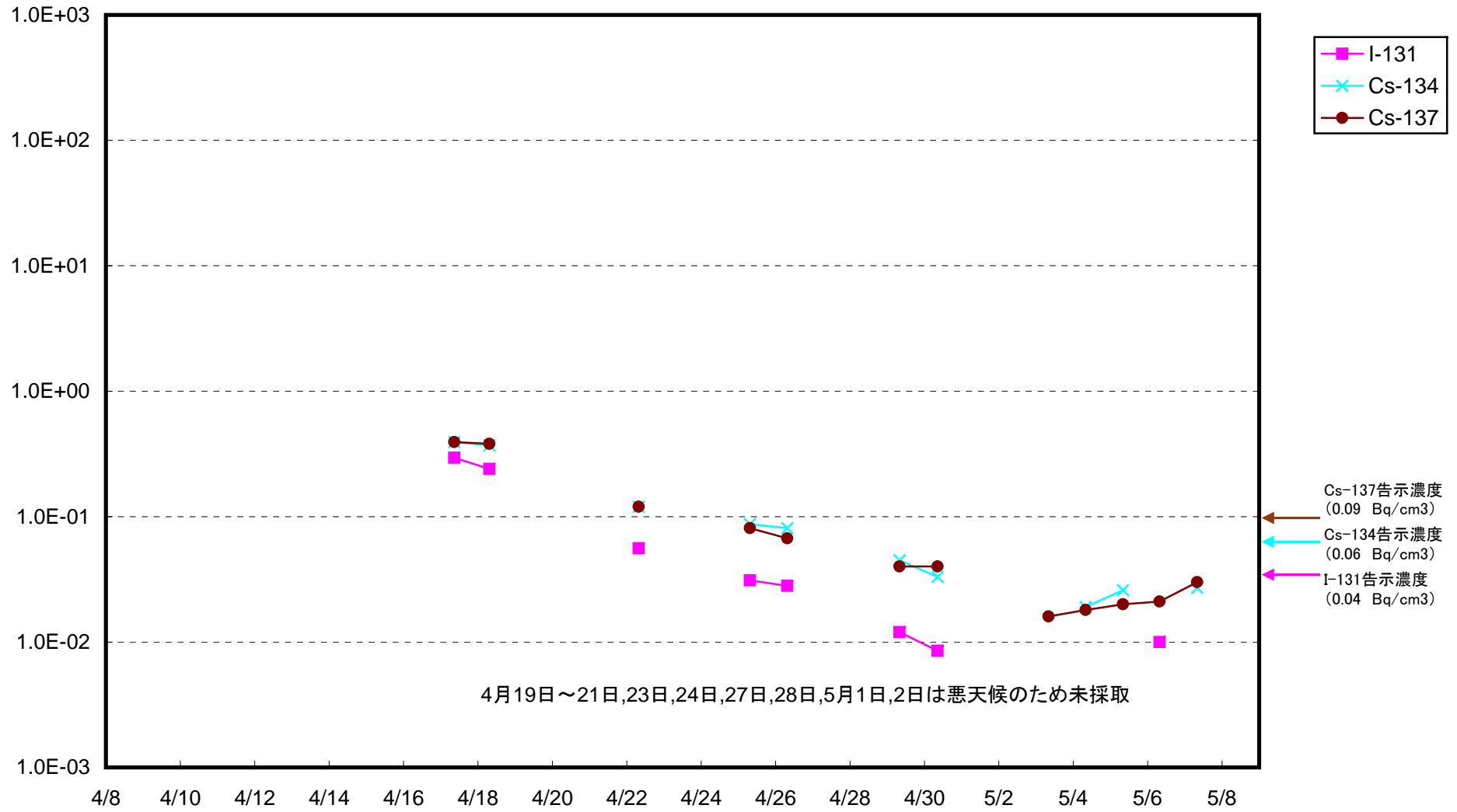
原町区沖合3km付近 海水放射能濃度(Bq/cm<sup>3</sup>)



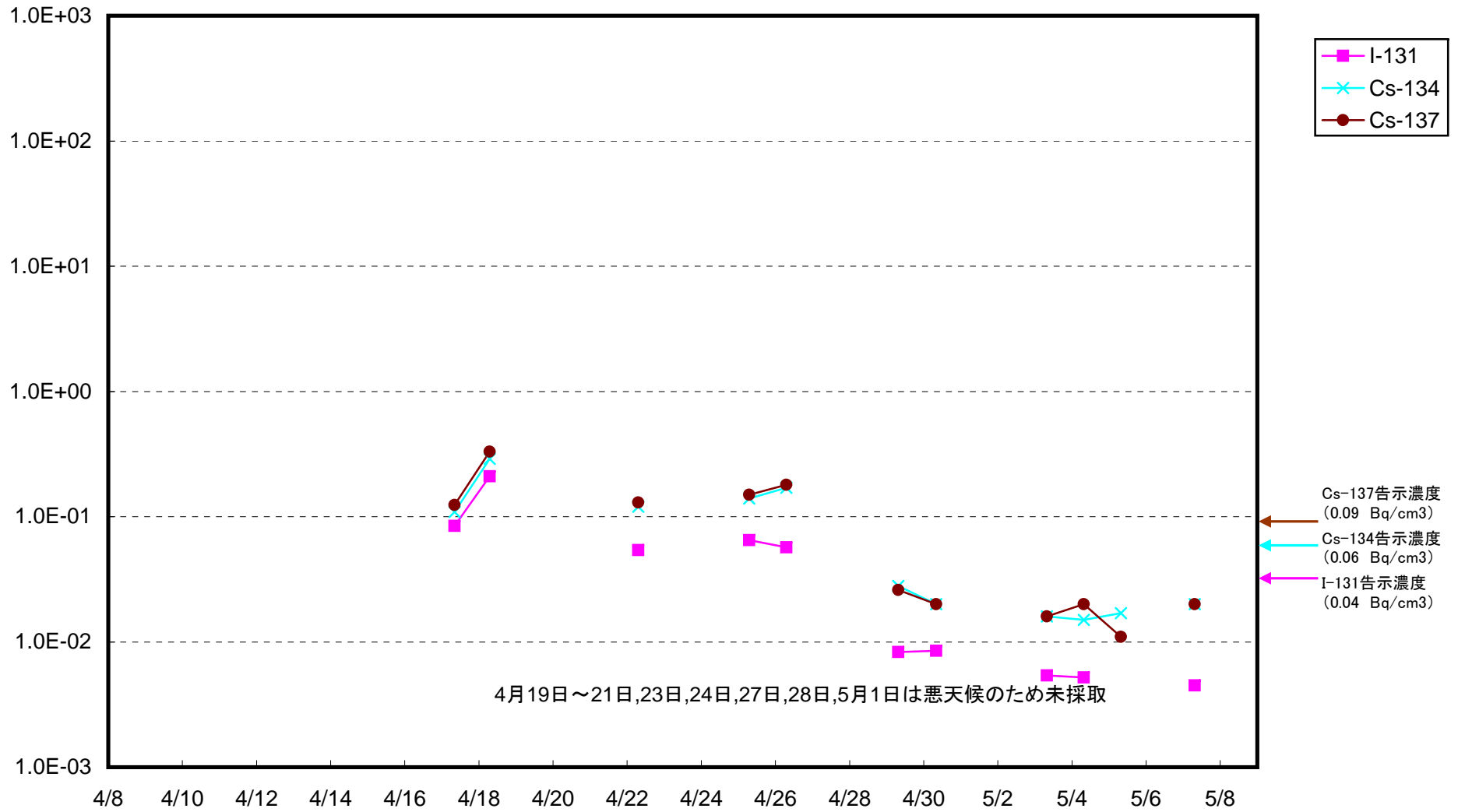
小高区沖合3km付近 海水放射能濃度(Bq/cm<sup>3</sup>)



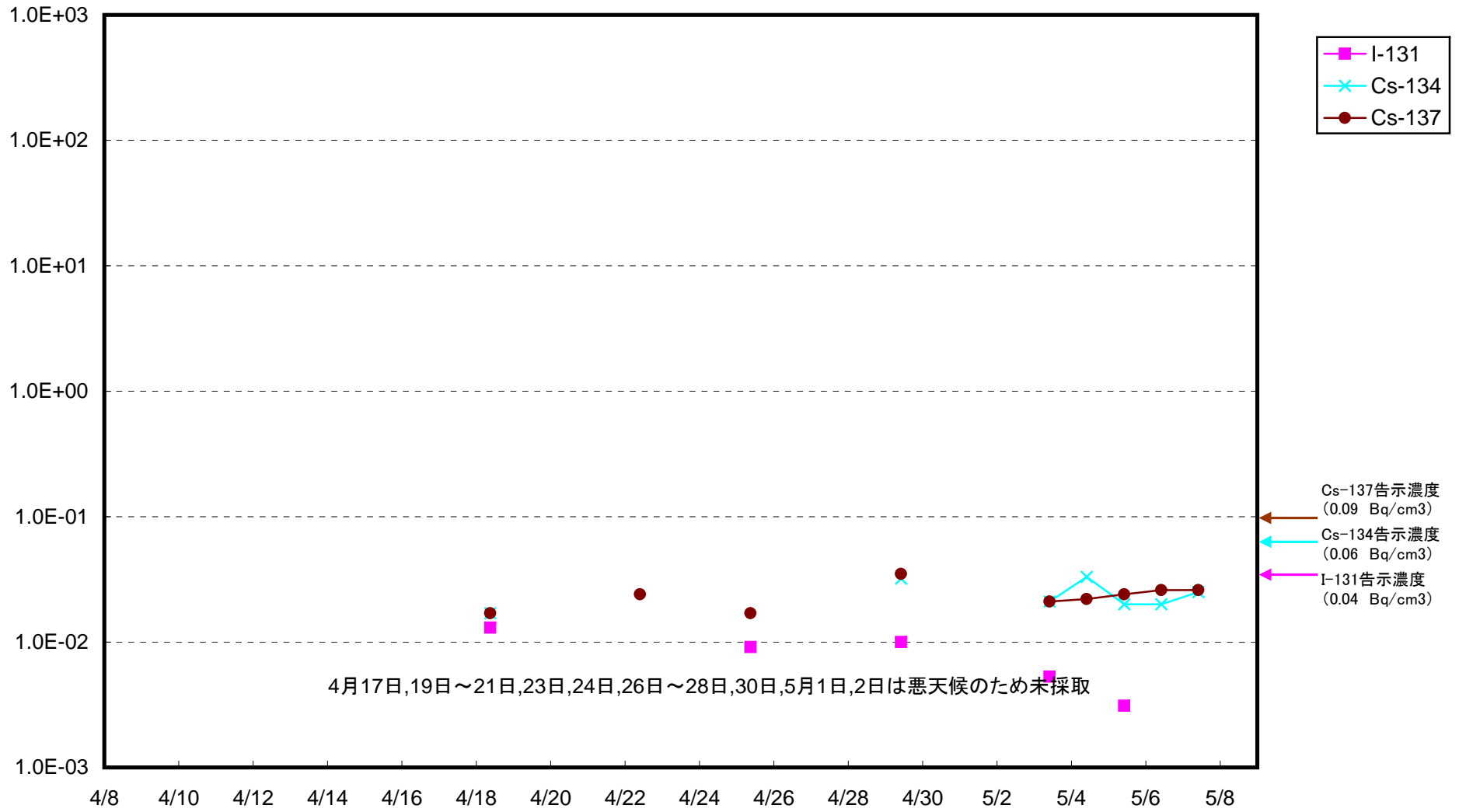
岩沢海岸沖合3km付近 海水放射能濃度 (Bq/cm<sup>3</sup>)



いわき市北部沖合3km付近 海水放射能濃度(Bq/cm<sup>3</sup>)

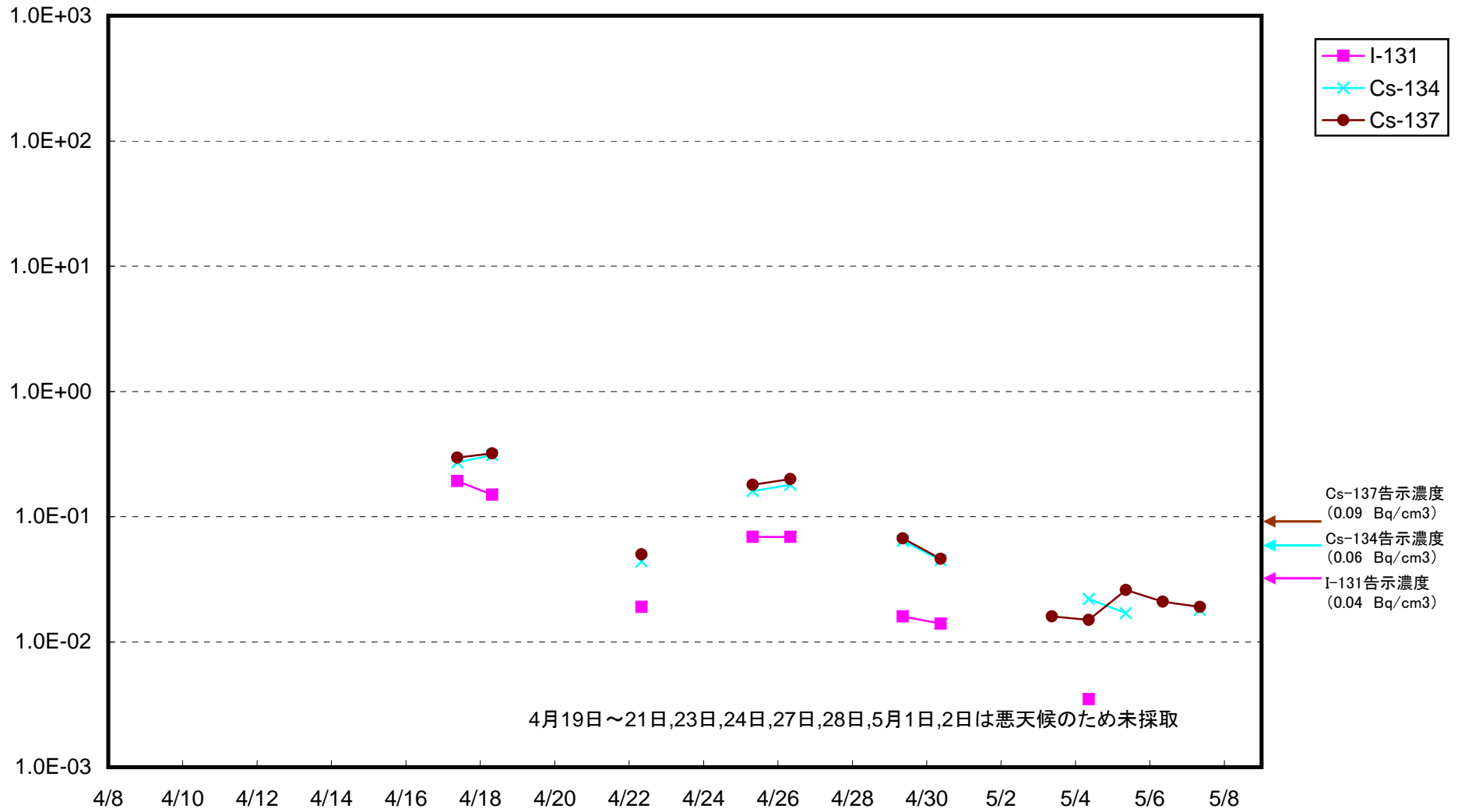


小高区沖合8km付近 海水放射能濃度(Bq/cm<sup>3</sup>)

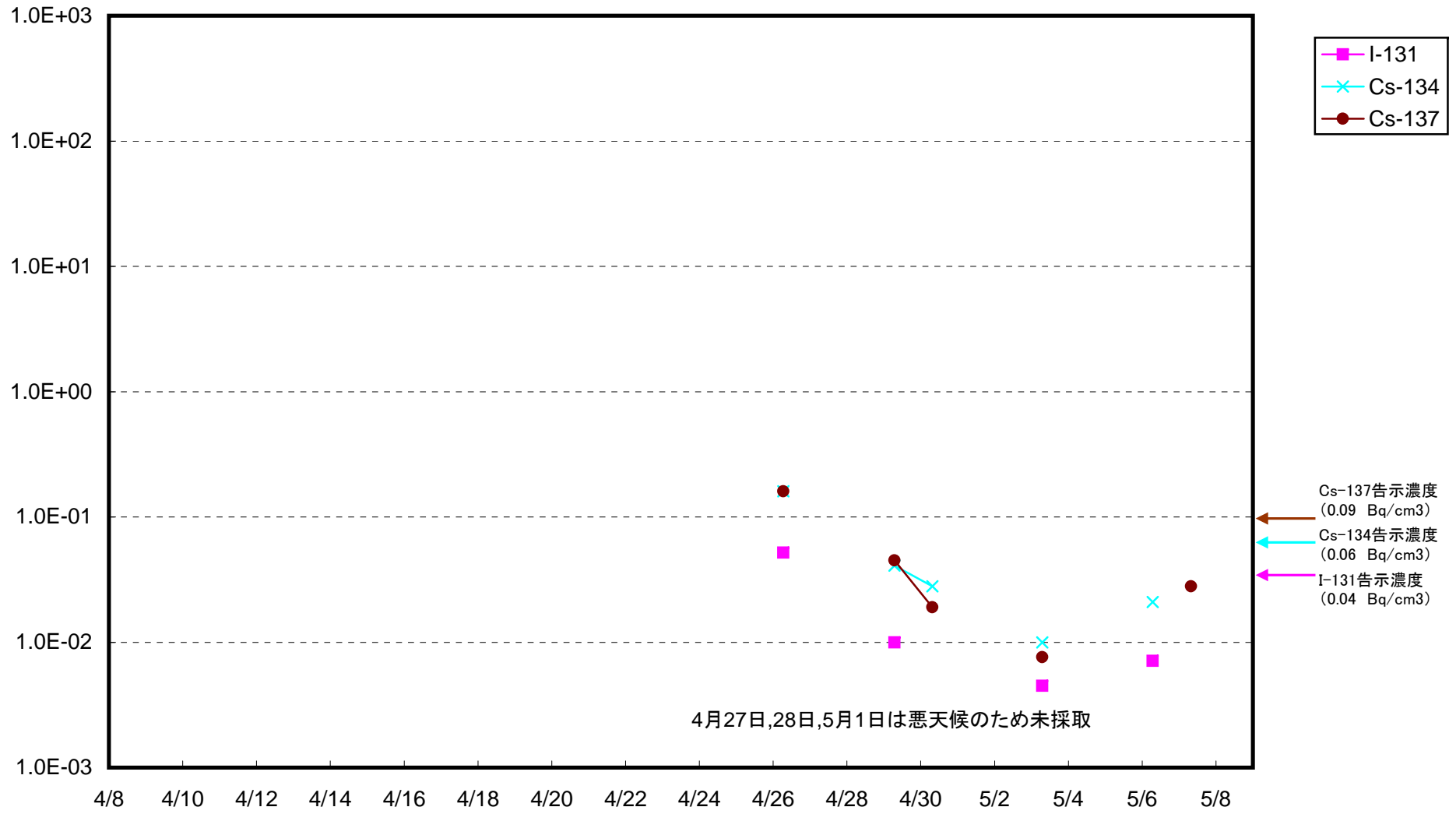




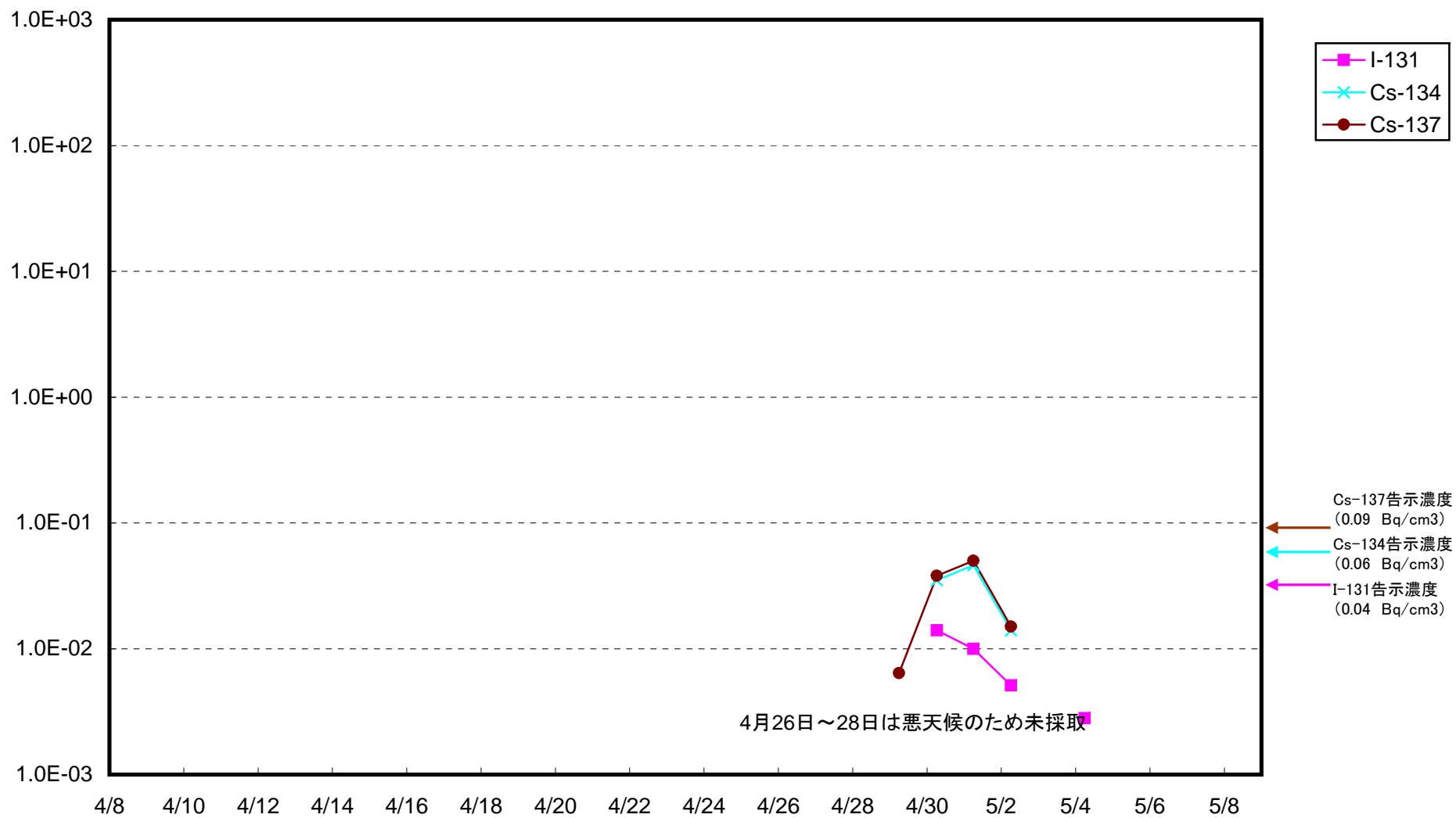
岩沢海岸沖8km付近 海水放射能濃度(Bq/cm<sup>3</sup>)



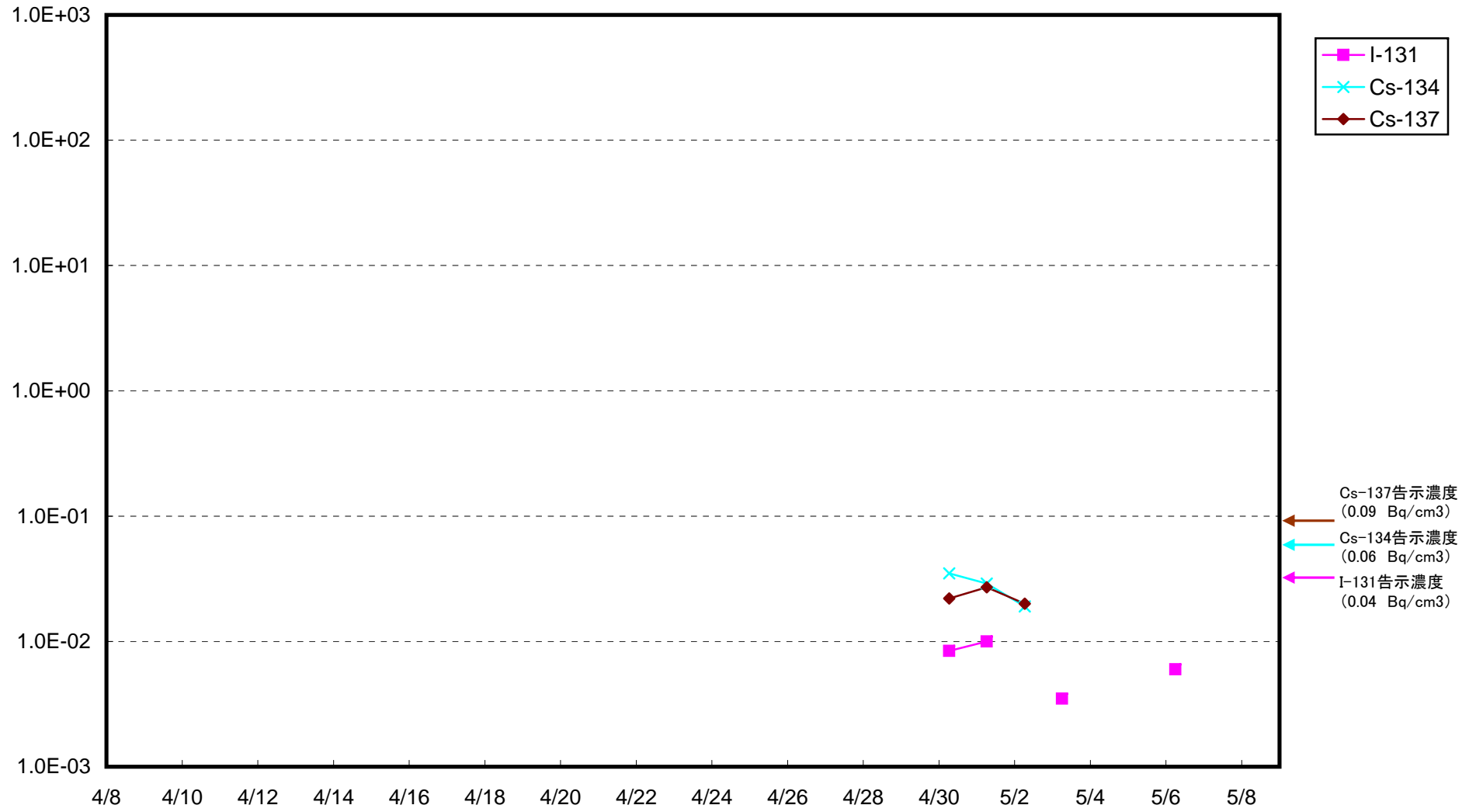
夏井川沖合3km付近 海水放射能濃度 (Bq/cm<sup>3</sup>)



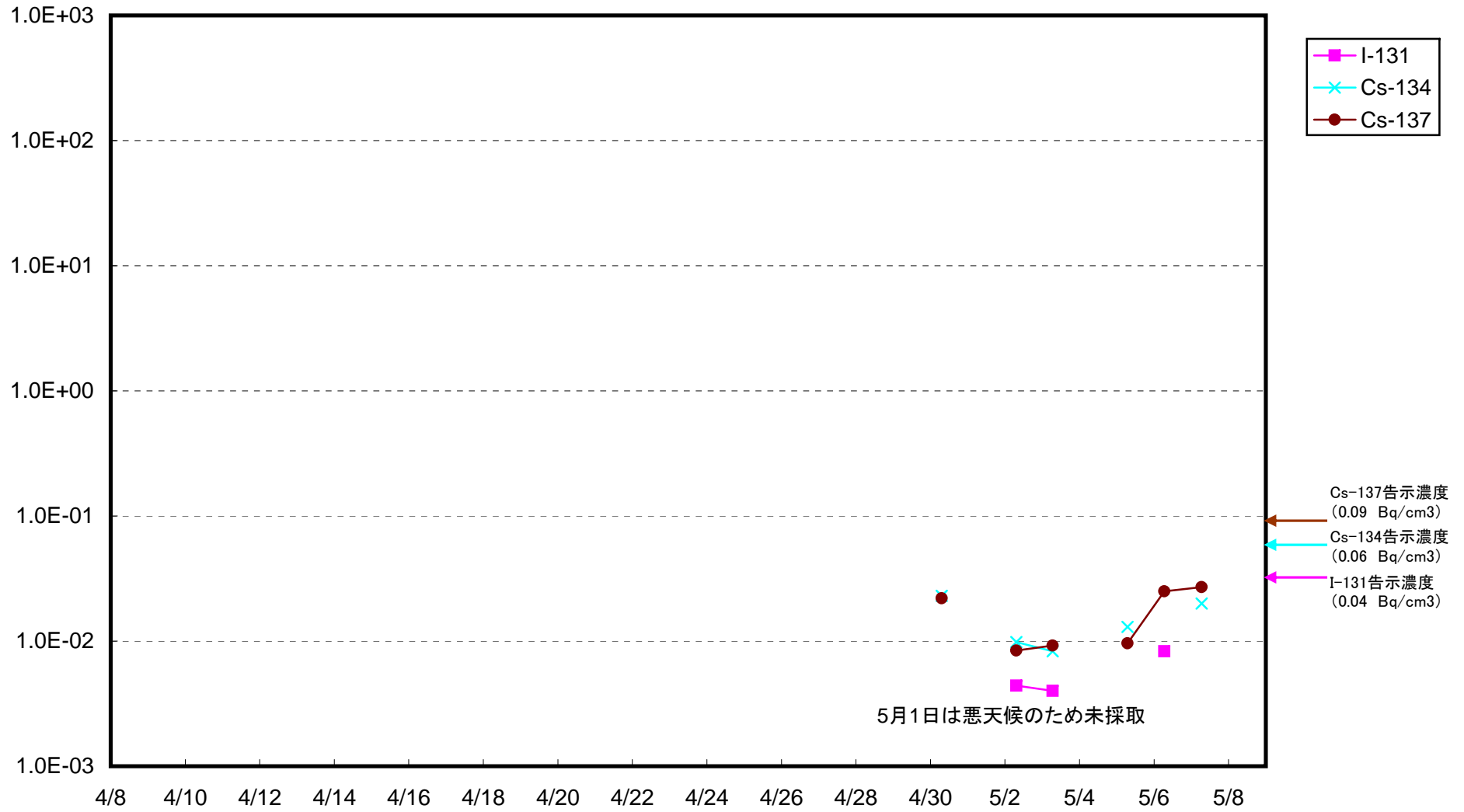
小名浜港沖合3km付近 海水放射能濃度 (Bq/cm<sup>3</sup>)



江名沖合3km付近 海水放射能濃度(Bq/cm<sup>3</sup>)



沼の内沖合3km付近 海水放射能濃度 (Bq/cm<sup>3</sup>)



豊間沖合3km付近 海水放射能濃度(Bq/cm<sup>3</sup>)

