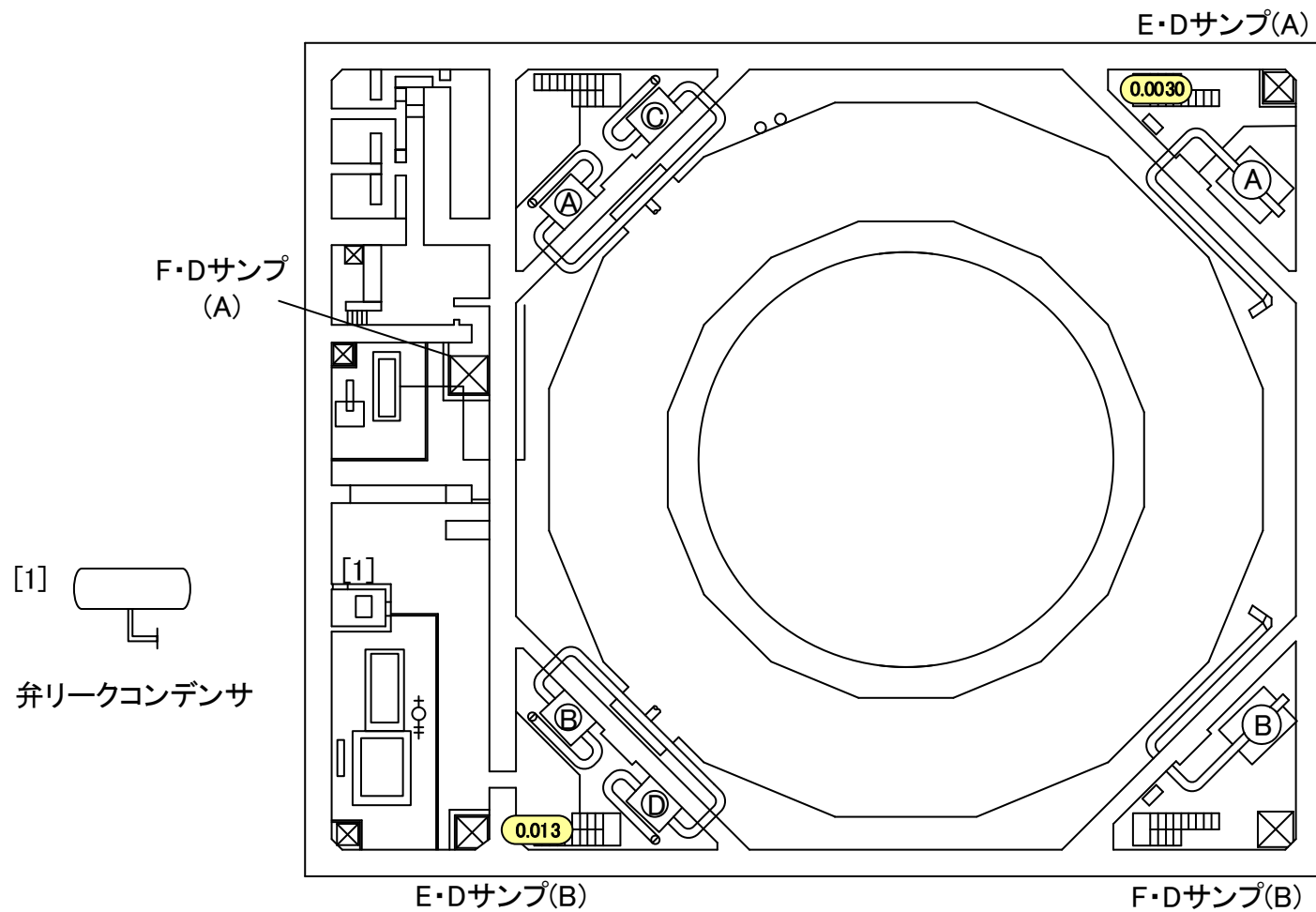


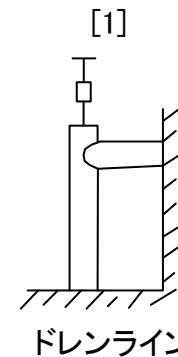
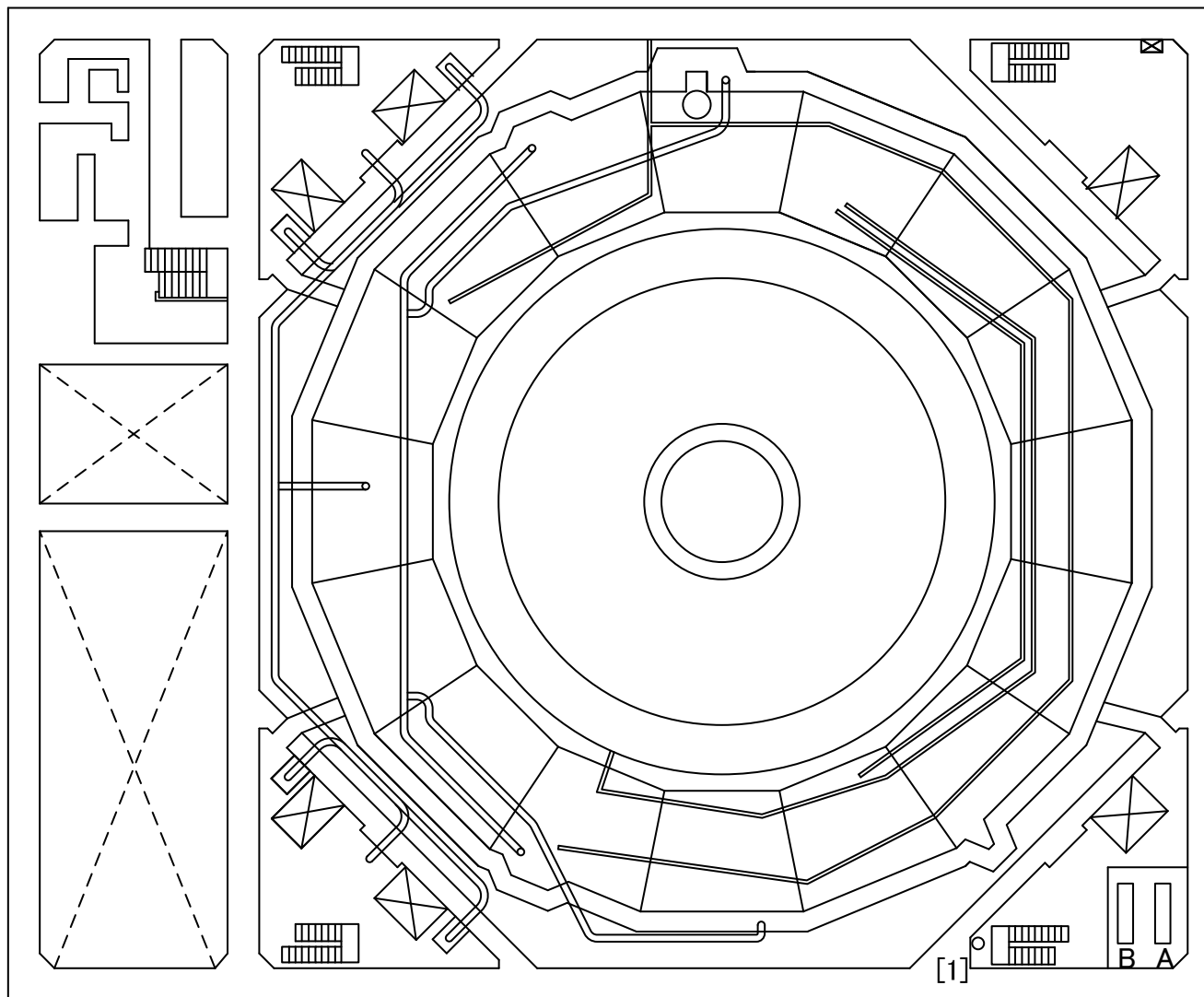
2017年4月28日  
東京電力ホールディングス株式会社

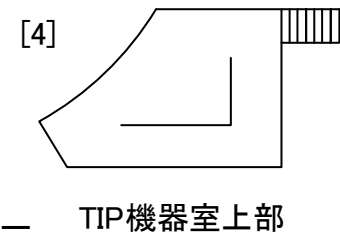
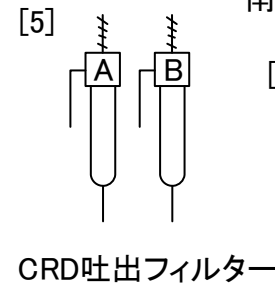
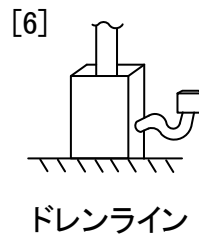
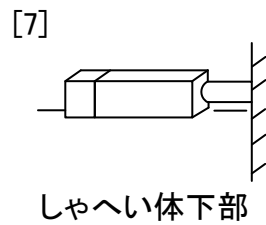
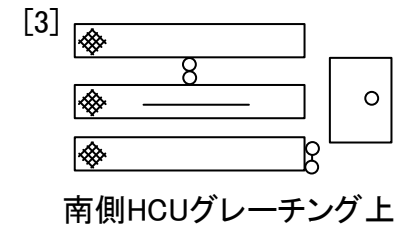
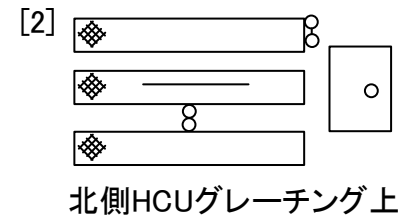
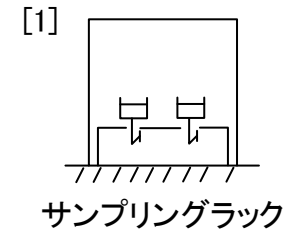
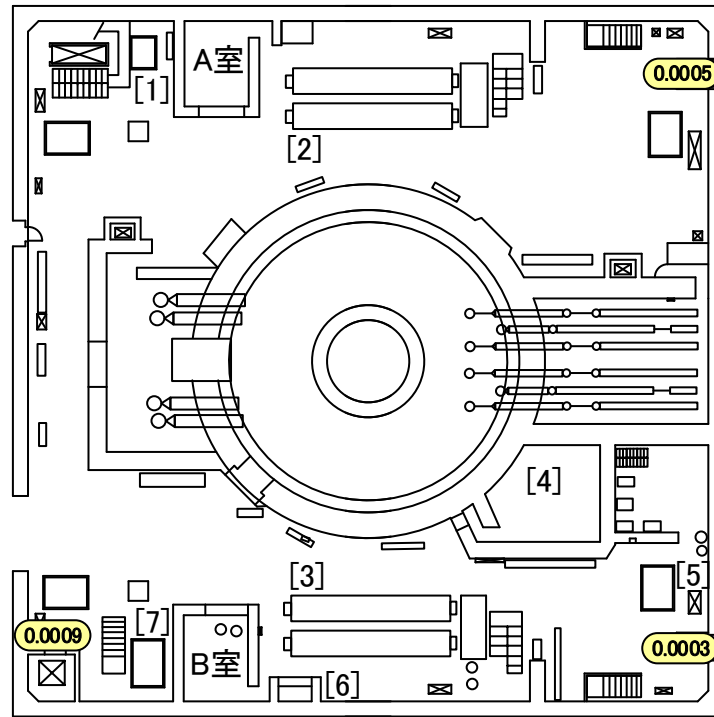
# 建屋内の空間線量率について

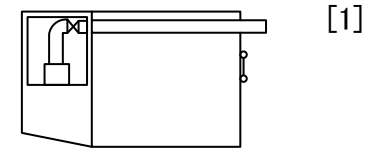
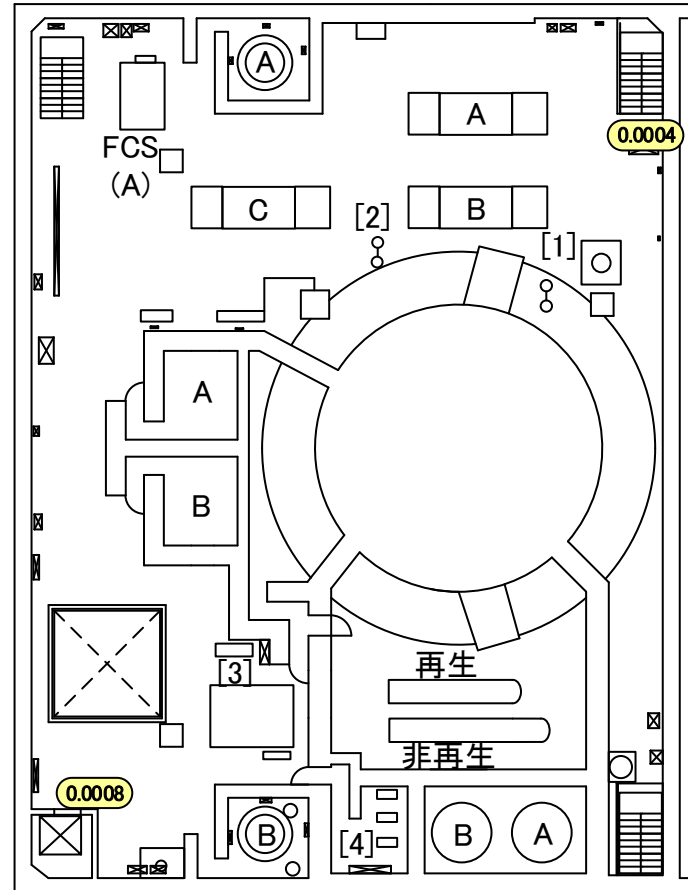
データ採取期間

- ・ 5号機 : 2017年2月1日～2017年2月28日

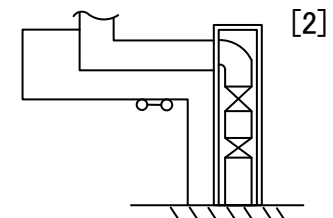




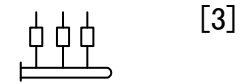




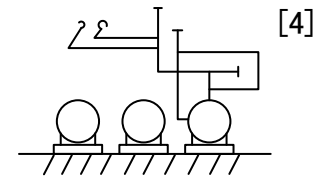
北東側グレーチング上



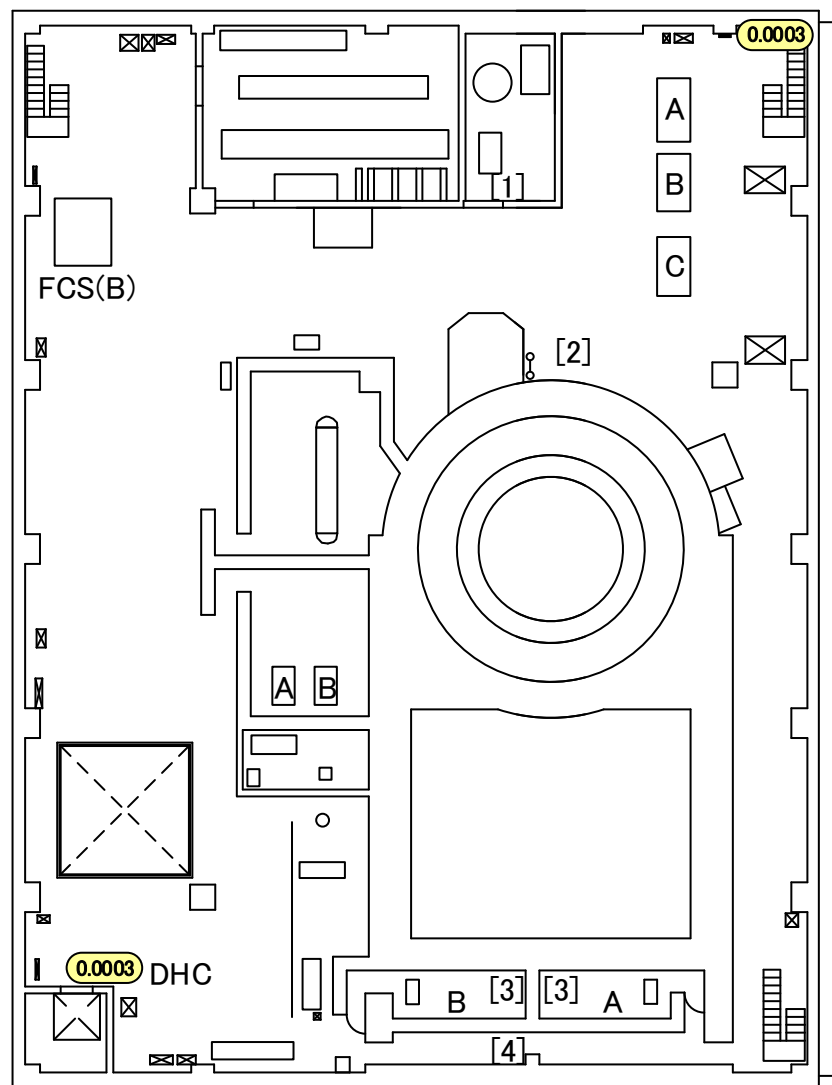
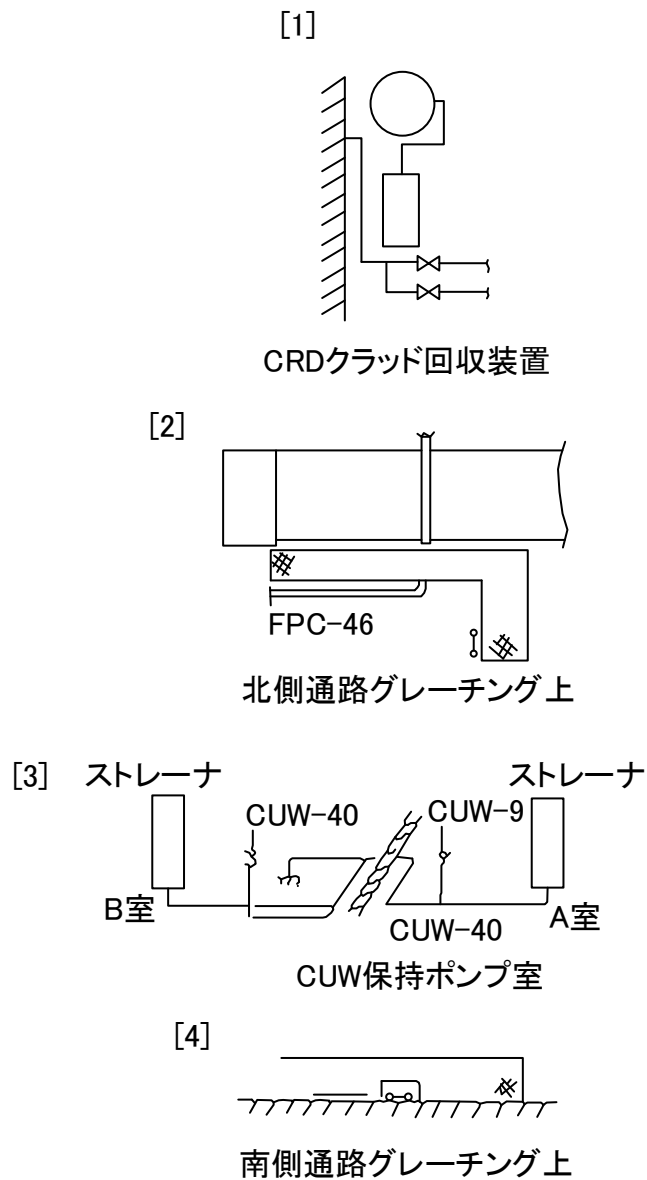
北側グレーチング上

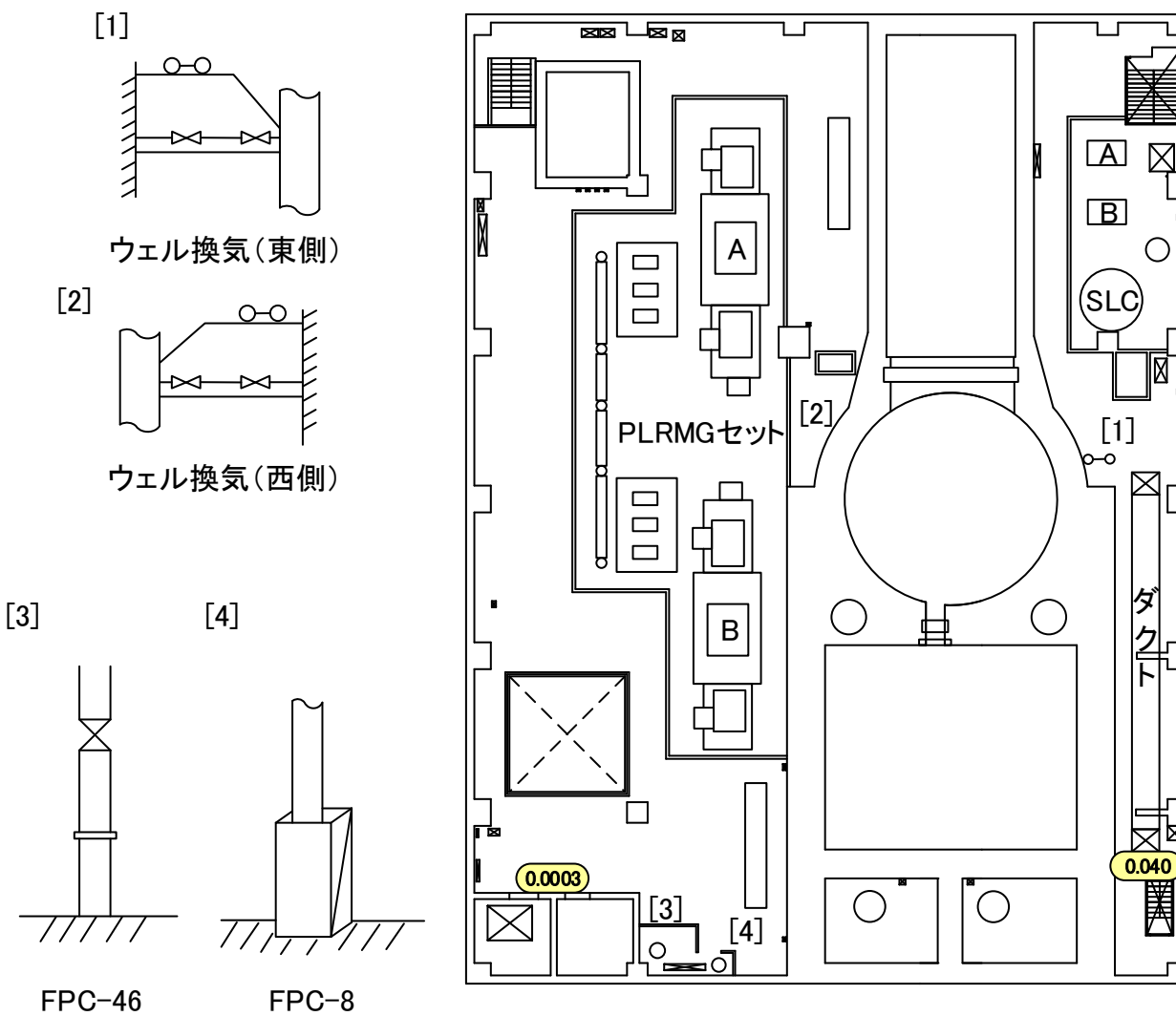


計装ラック下部



スラッジ放出混合ポンプ



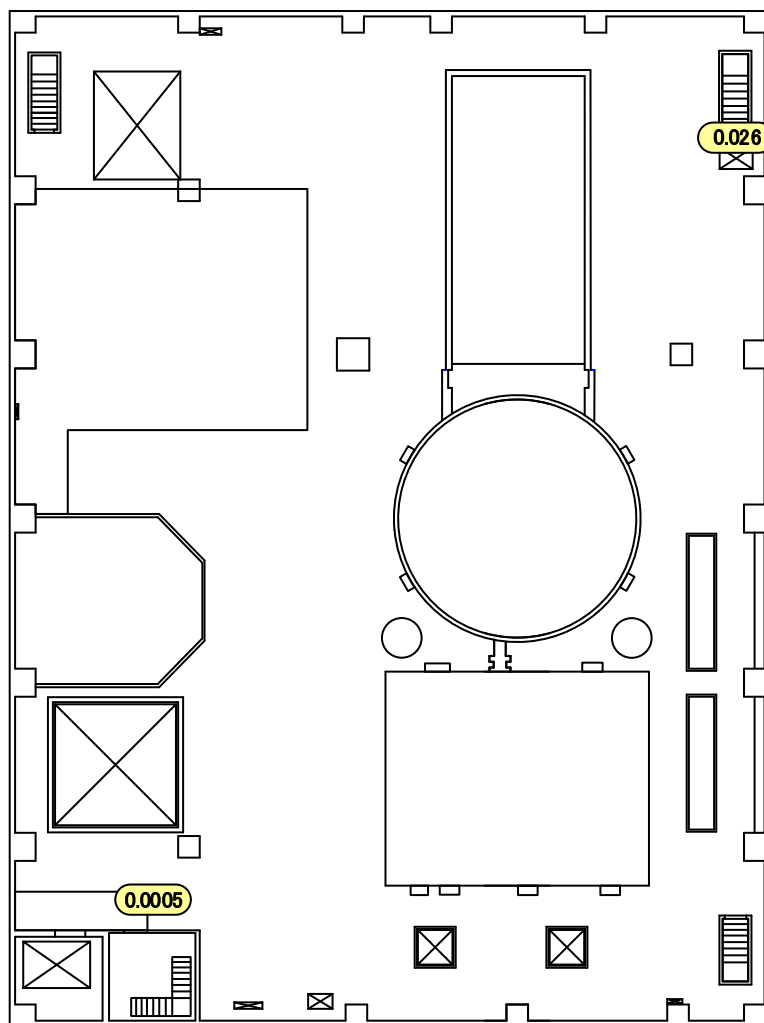


福島第一 原子力発電所

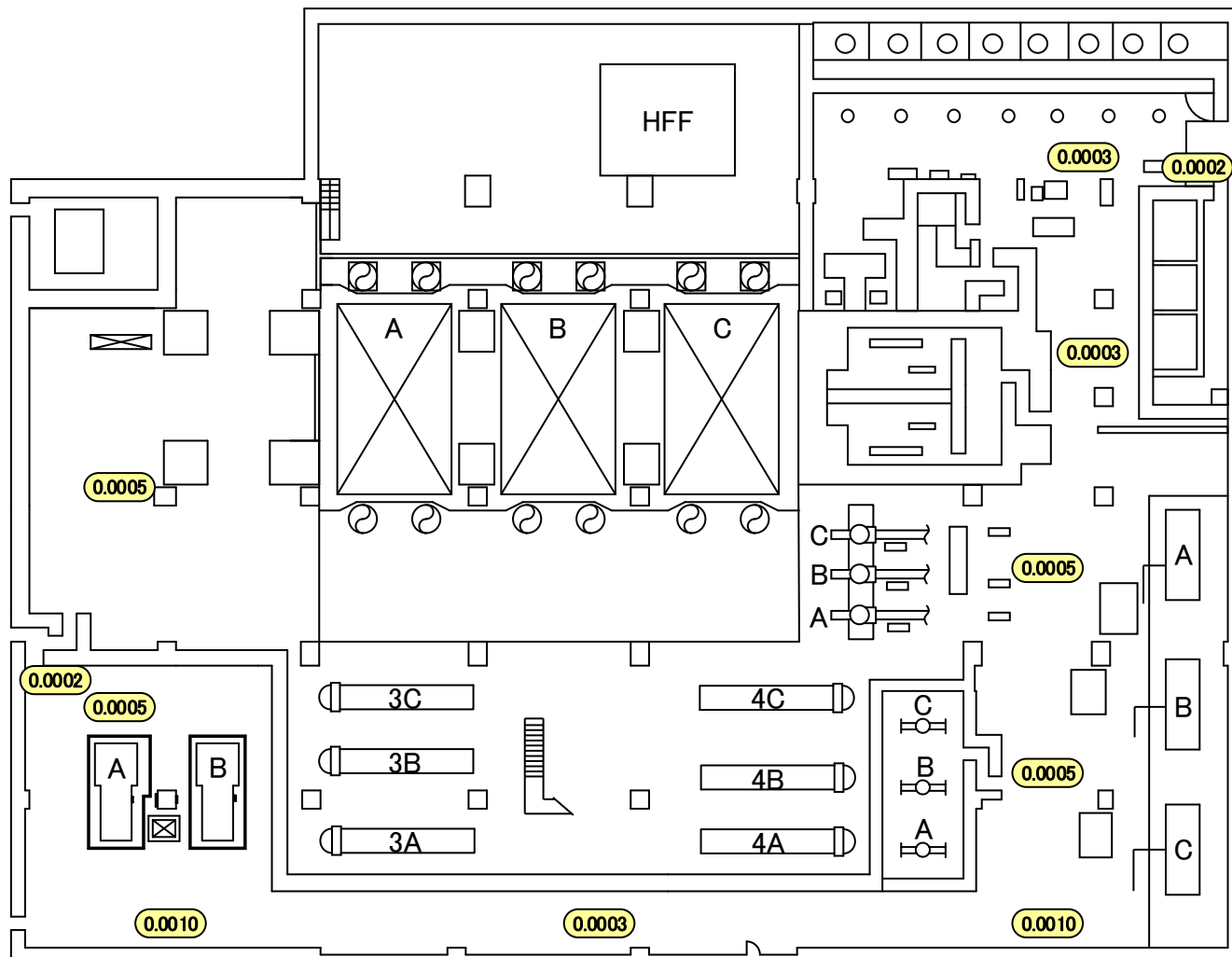
図面名称:

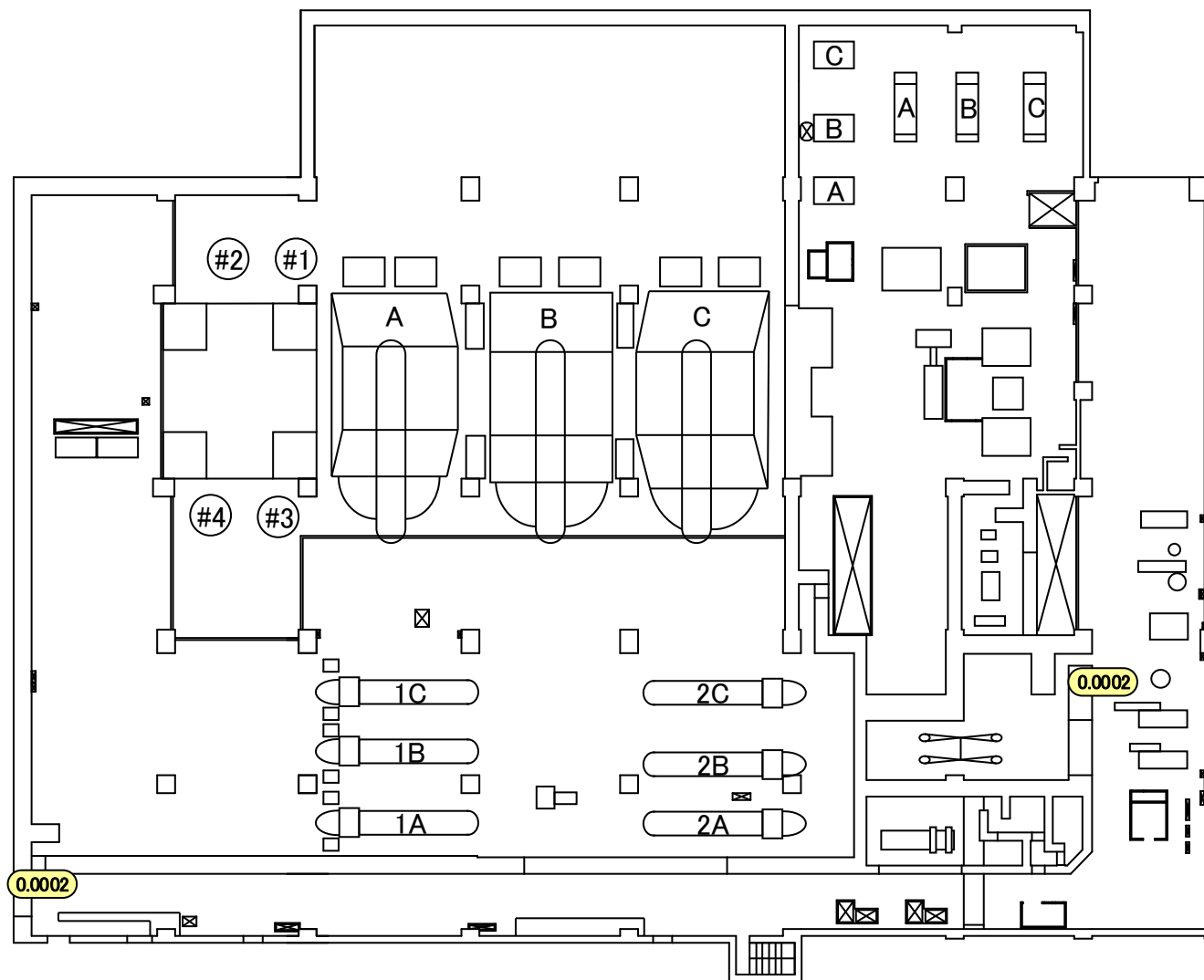
5号機 原子炉建屋 5階

[ 単位: mSv/h ]



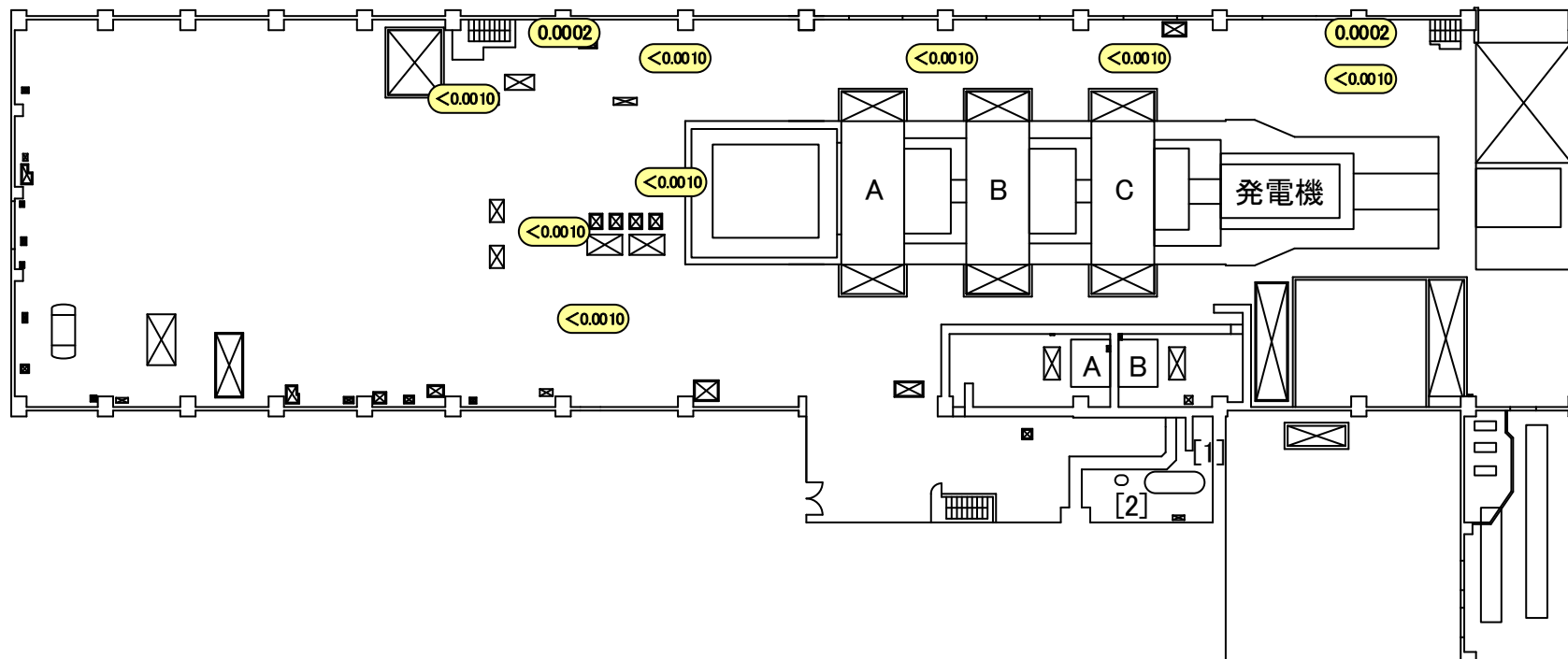
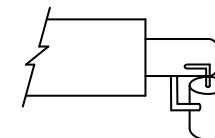
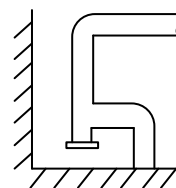


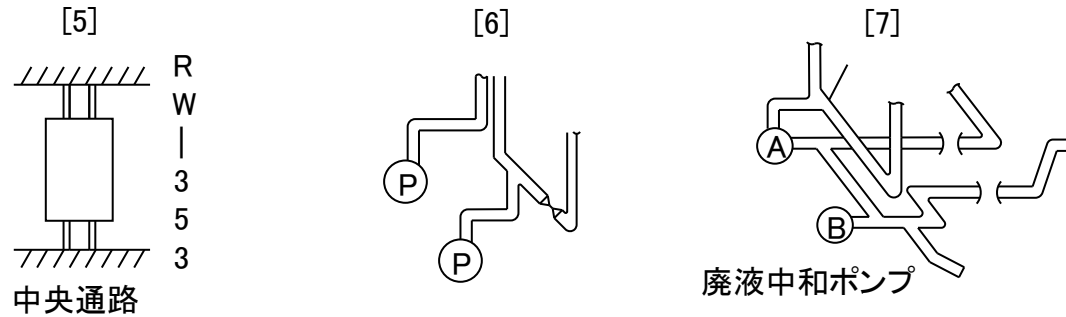
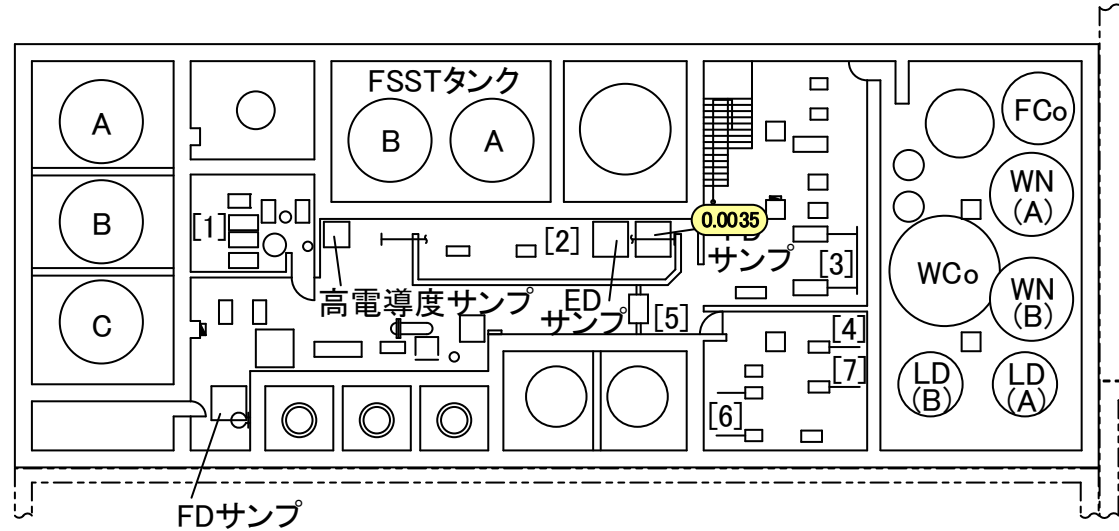
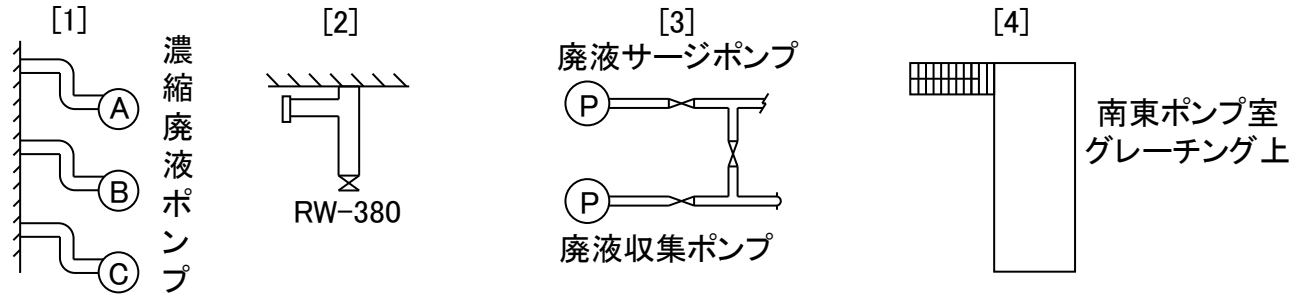


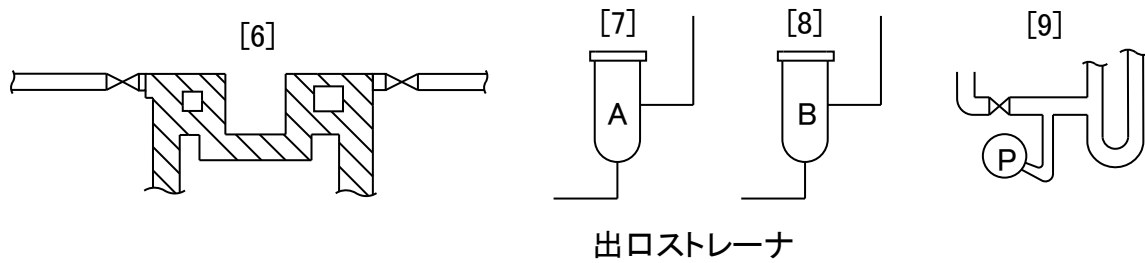
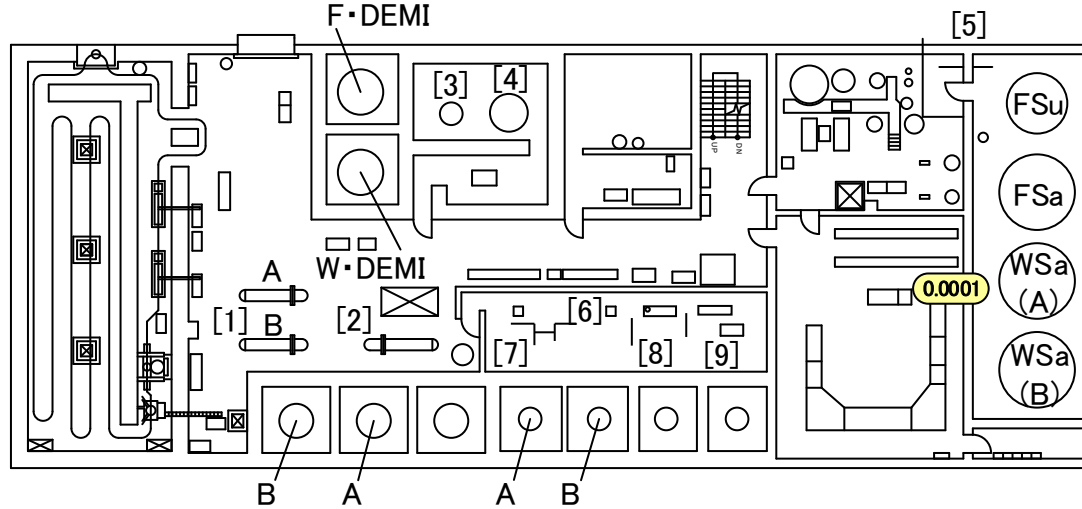
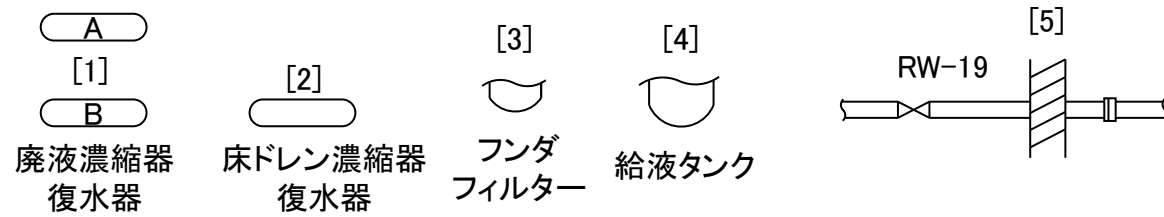


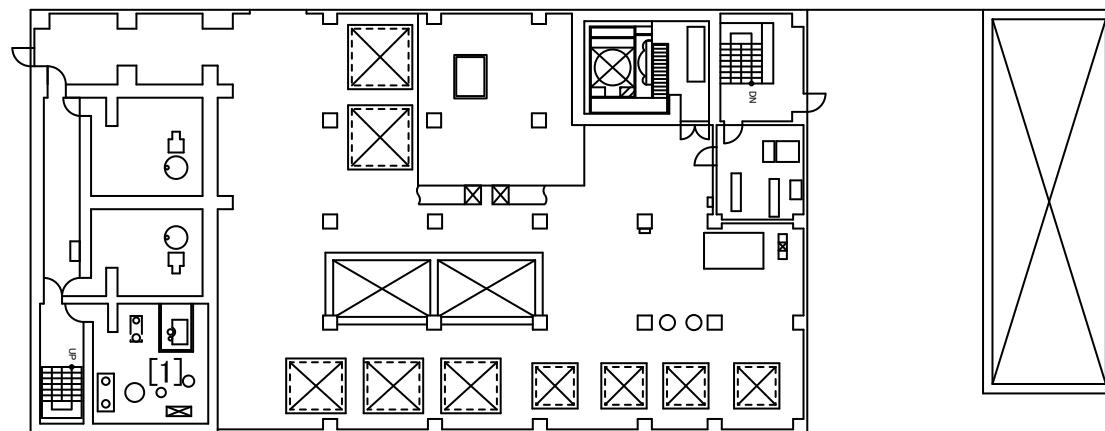
[1]  
AS-23

[2]  
エバポレータ









[1]



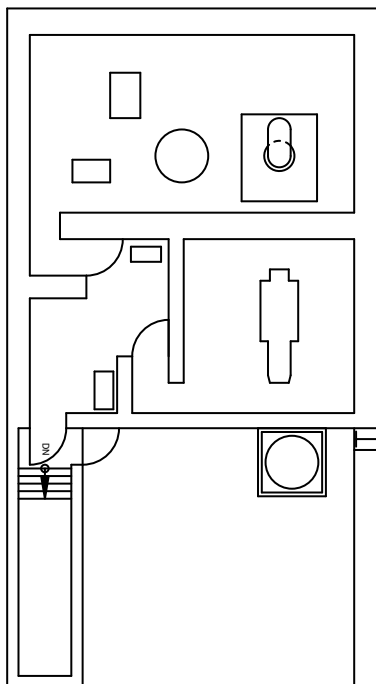
濃縮廃液計量タンク

福島第一 原子力発電所

図面名称:

5号機 廃棄物処理建屋 3階

[ 単位: mSv/h ]

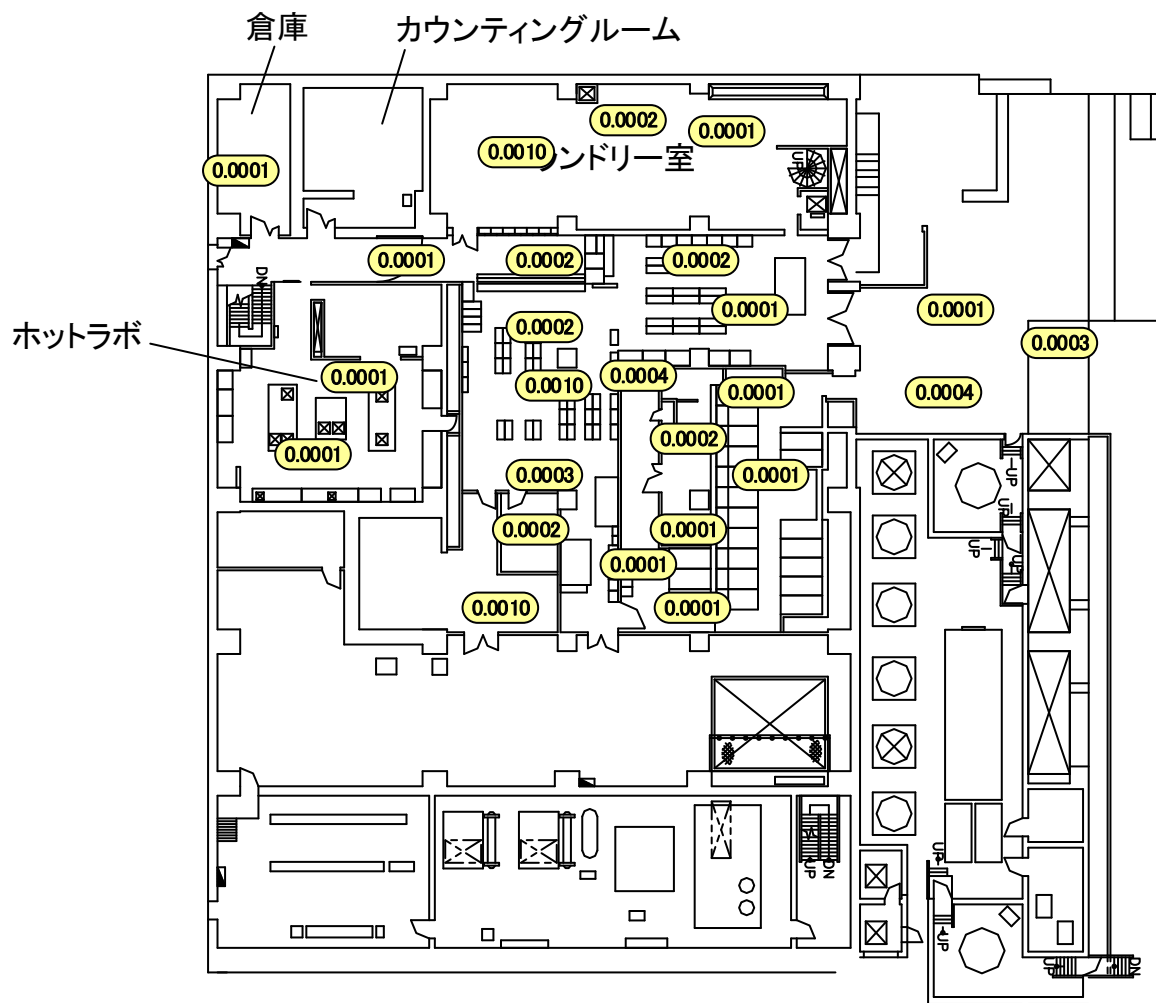


福島第一 原子力発電所

図面名称:

5・6号機 サービス建屋 1階

[ 単位: mSv/h ]





福島第一 原子力発電所

図面名称:

5・6号機 サービス建屋 2階

[ 単位: mSv/h ]

