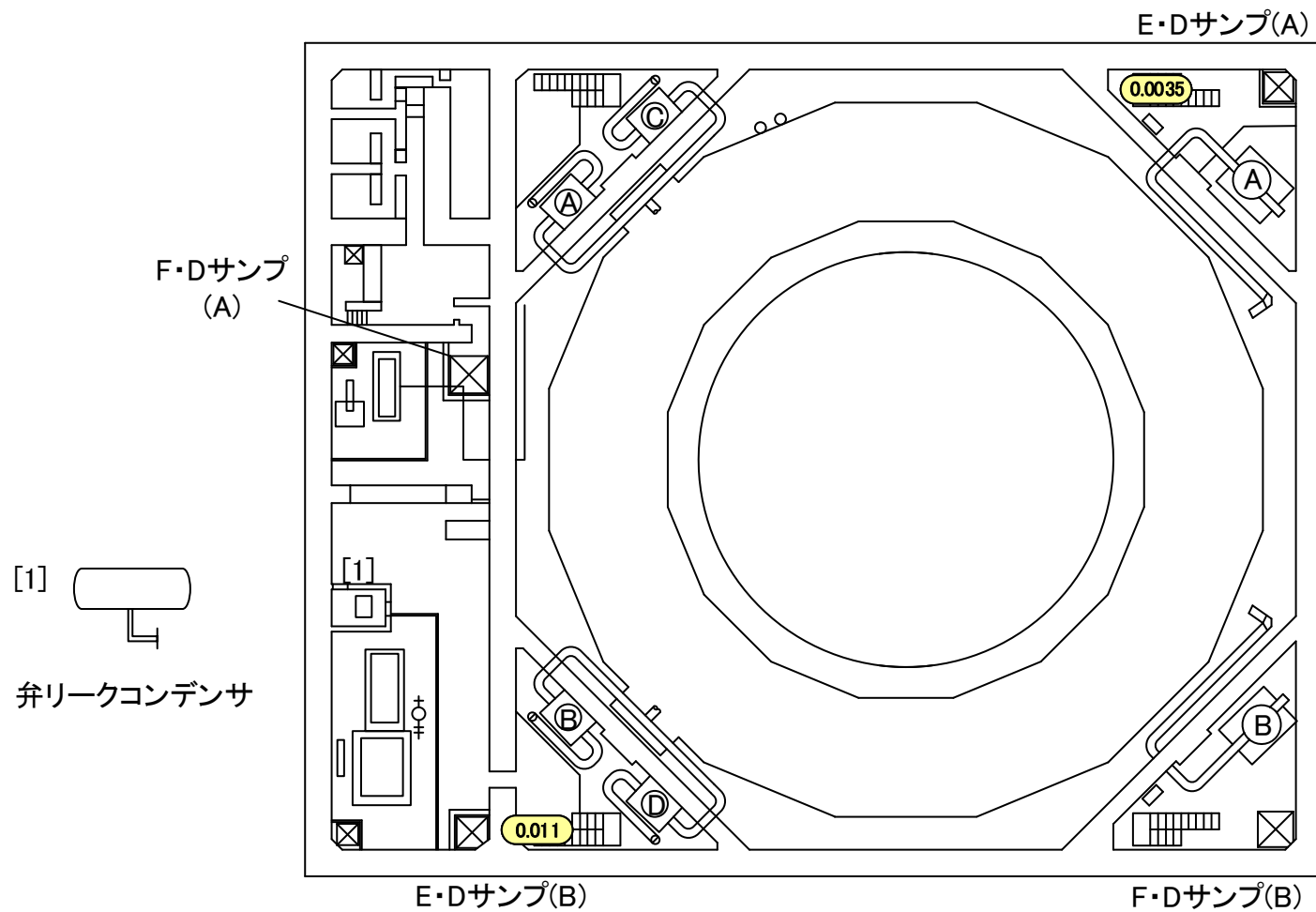


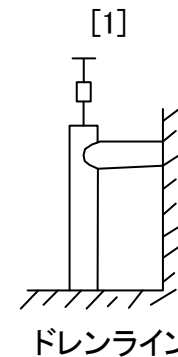
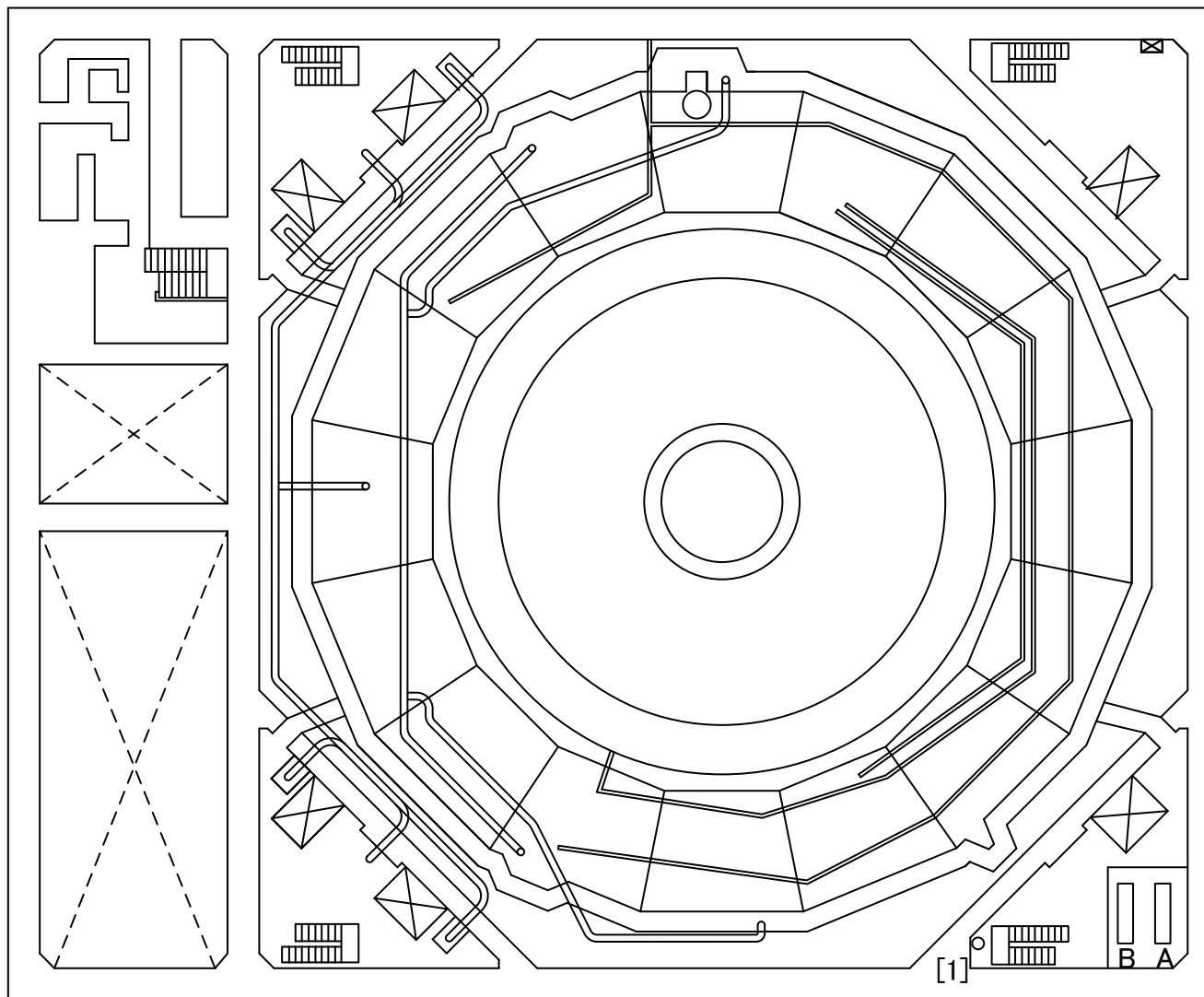
2017年9月 4 日  
東京電力ホールディングス株式会社

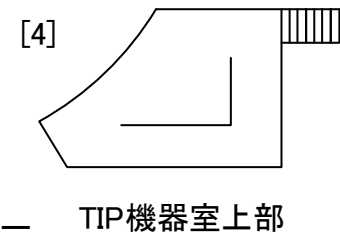
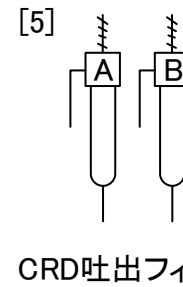
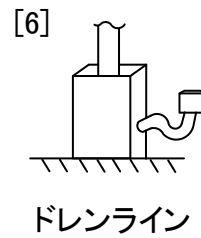
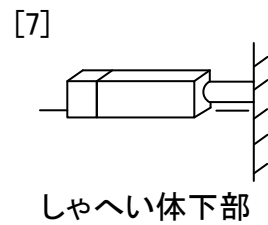
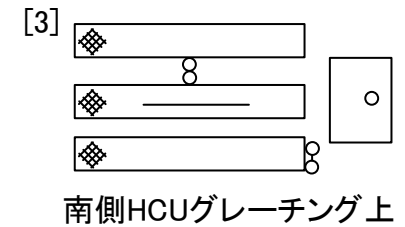
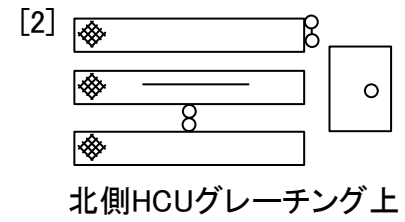
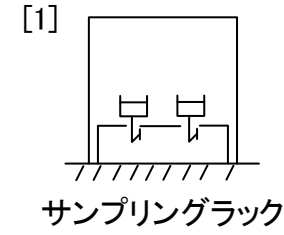
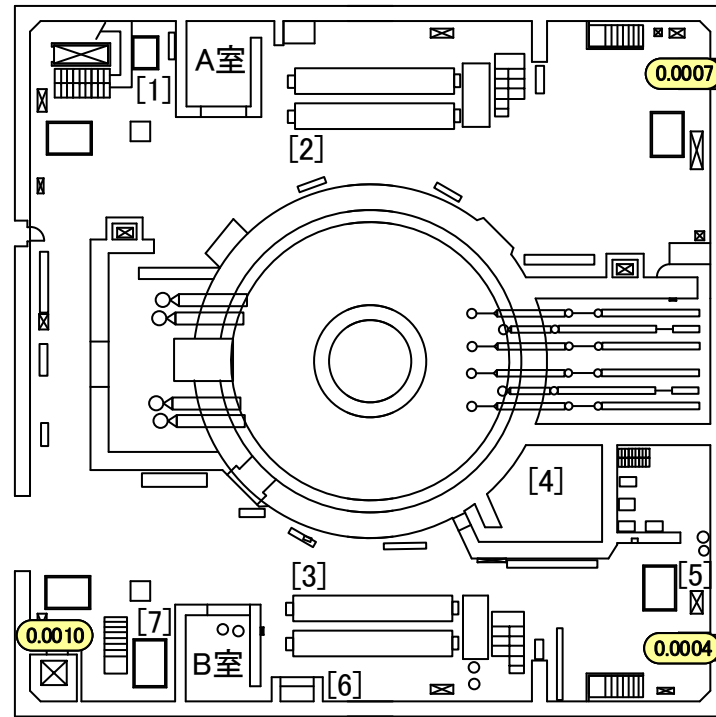
# 建屋内の空間線量率について

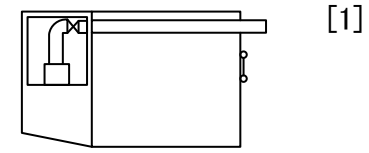
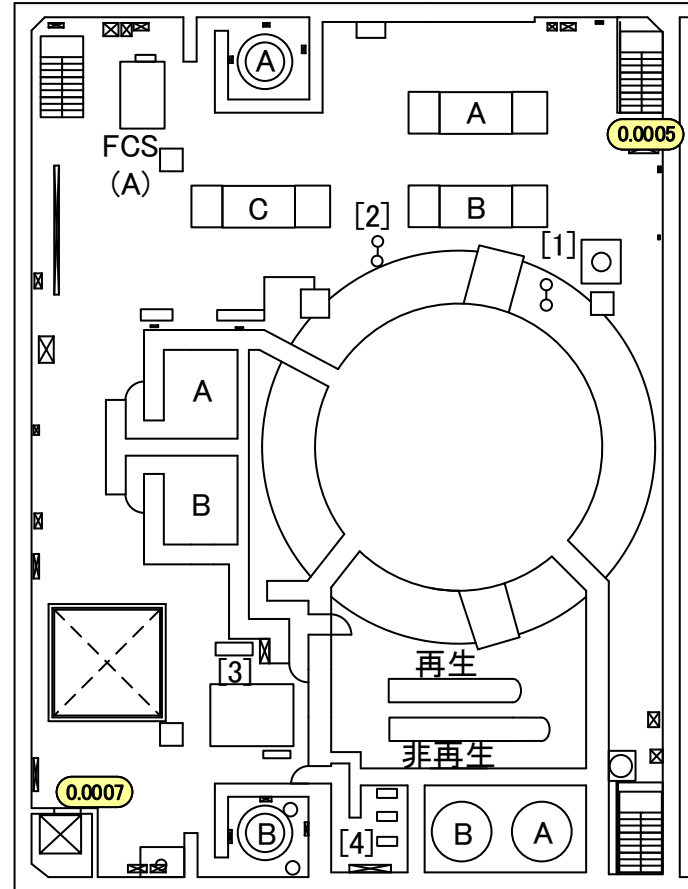
データ採取期間

- ・ 5号機 : 2017年6月1日～2017年6月30日

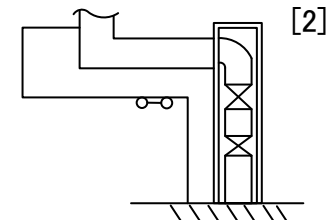




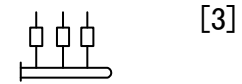




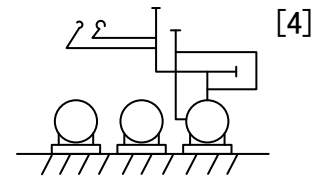
北東側グレーチング上



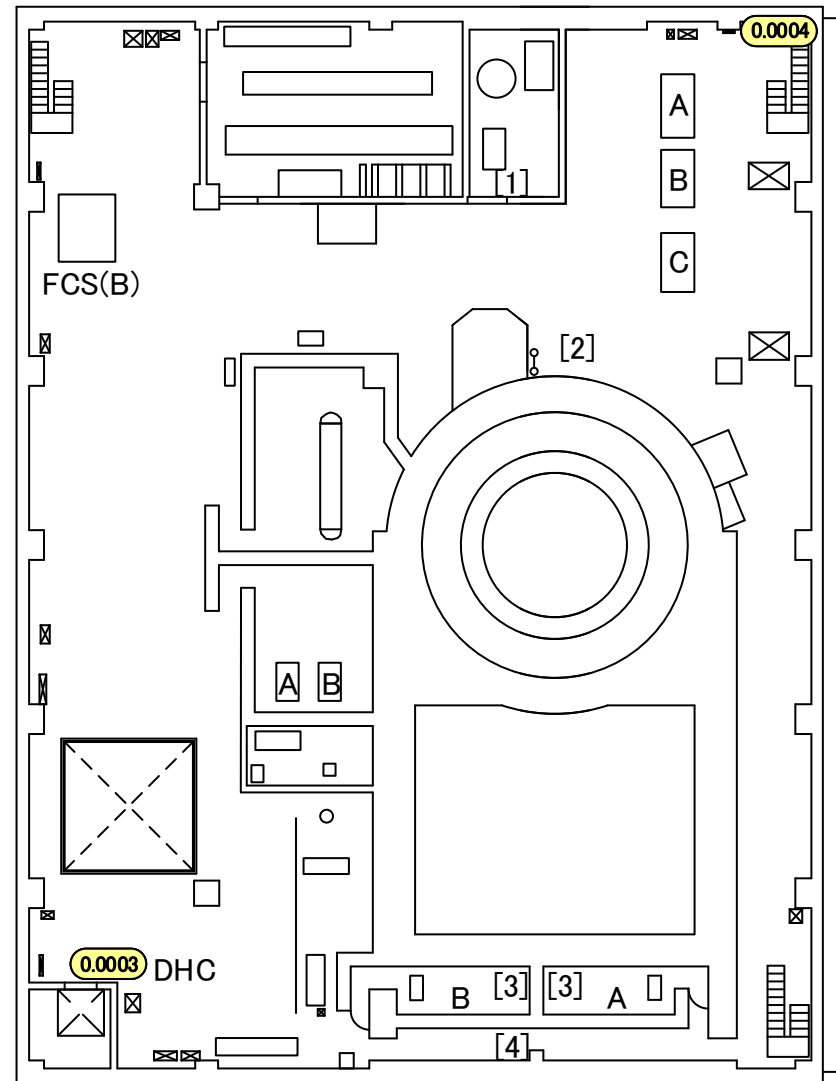
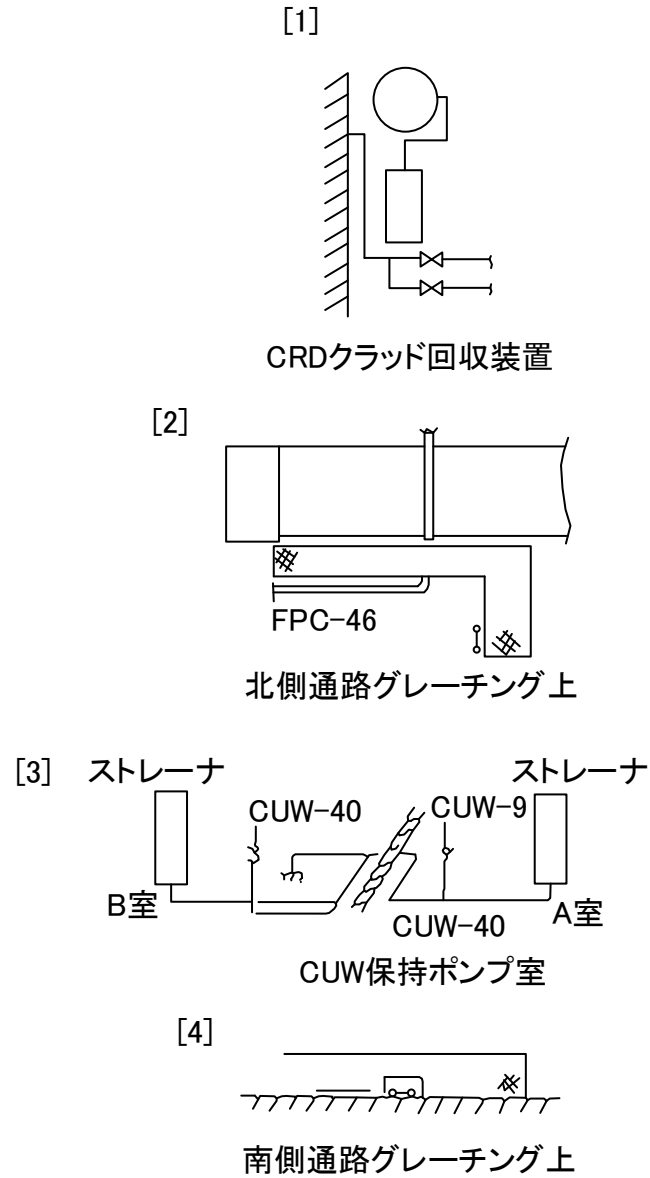
北側グレーチング上

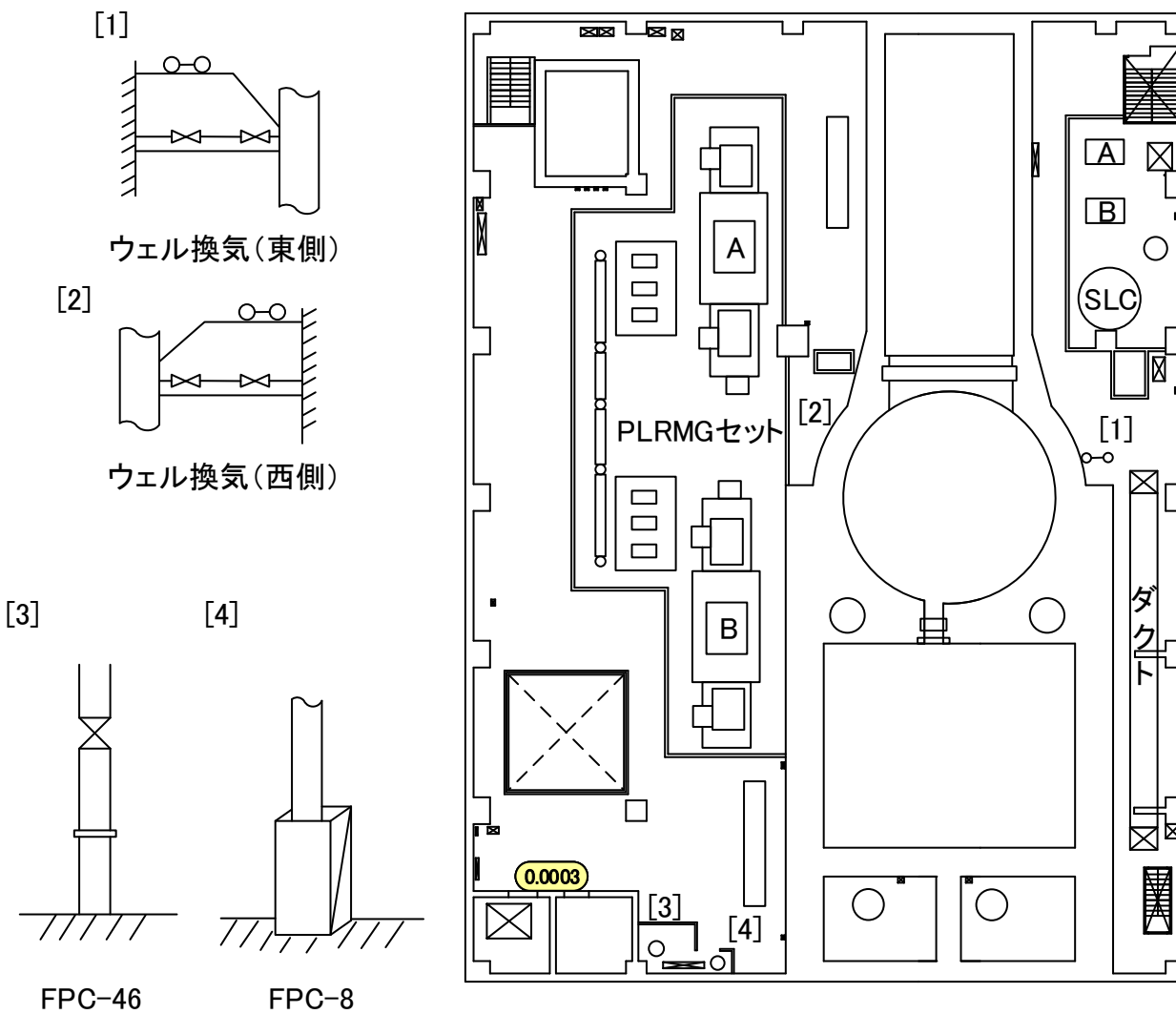


計装ラック下部



スラッジ放出混合ポンプ



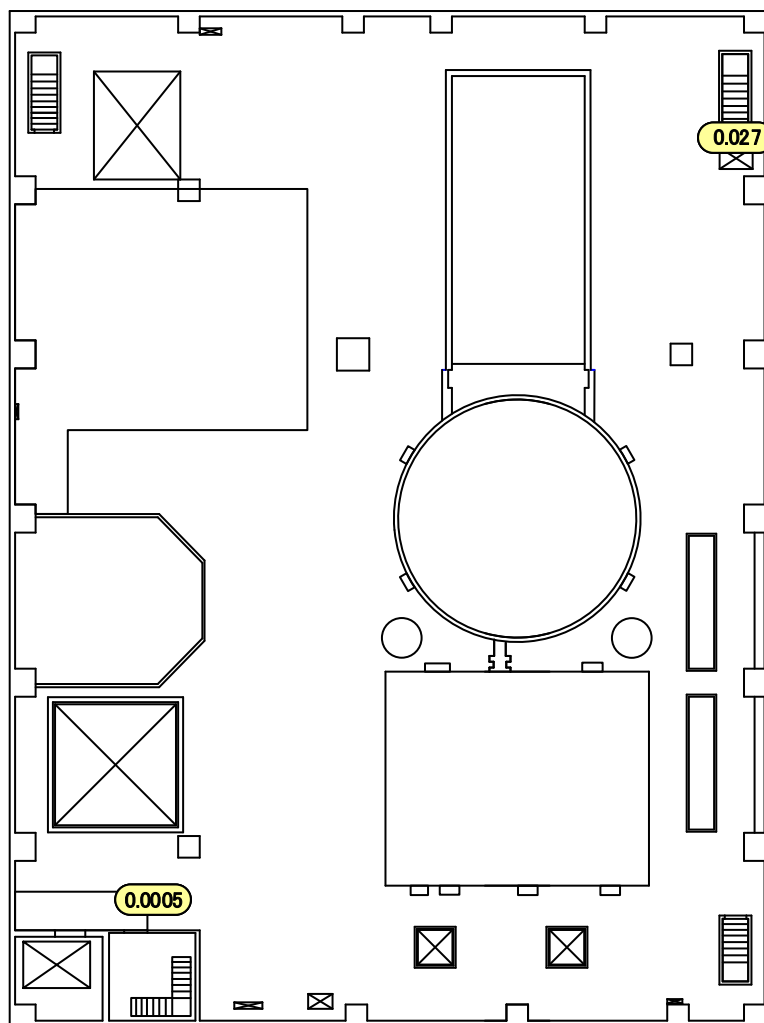


福島第一 原子力発電所

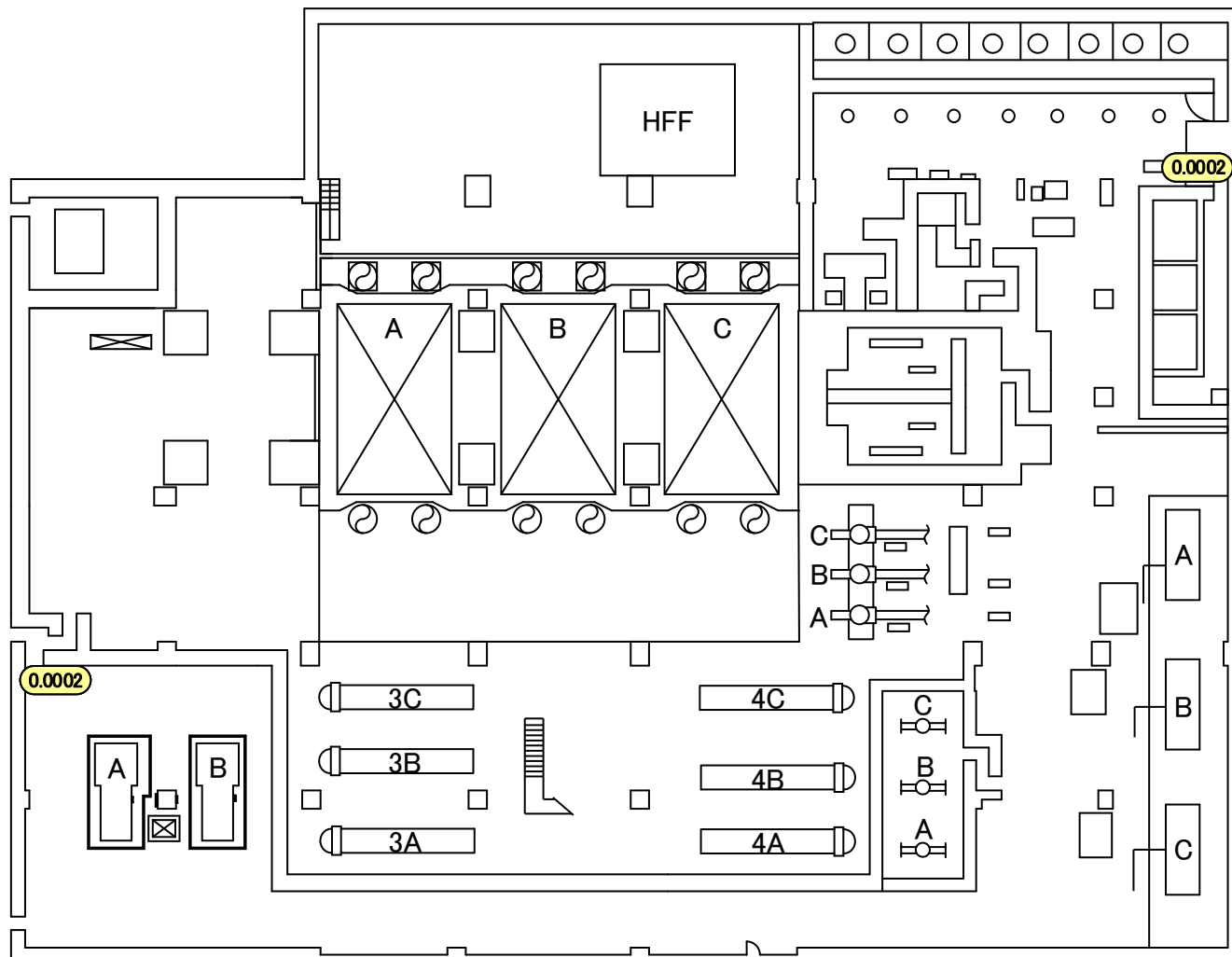
図面名称:

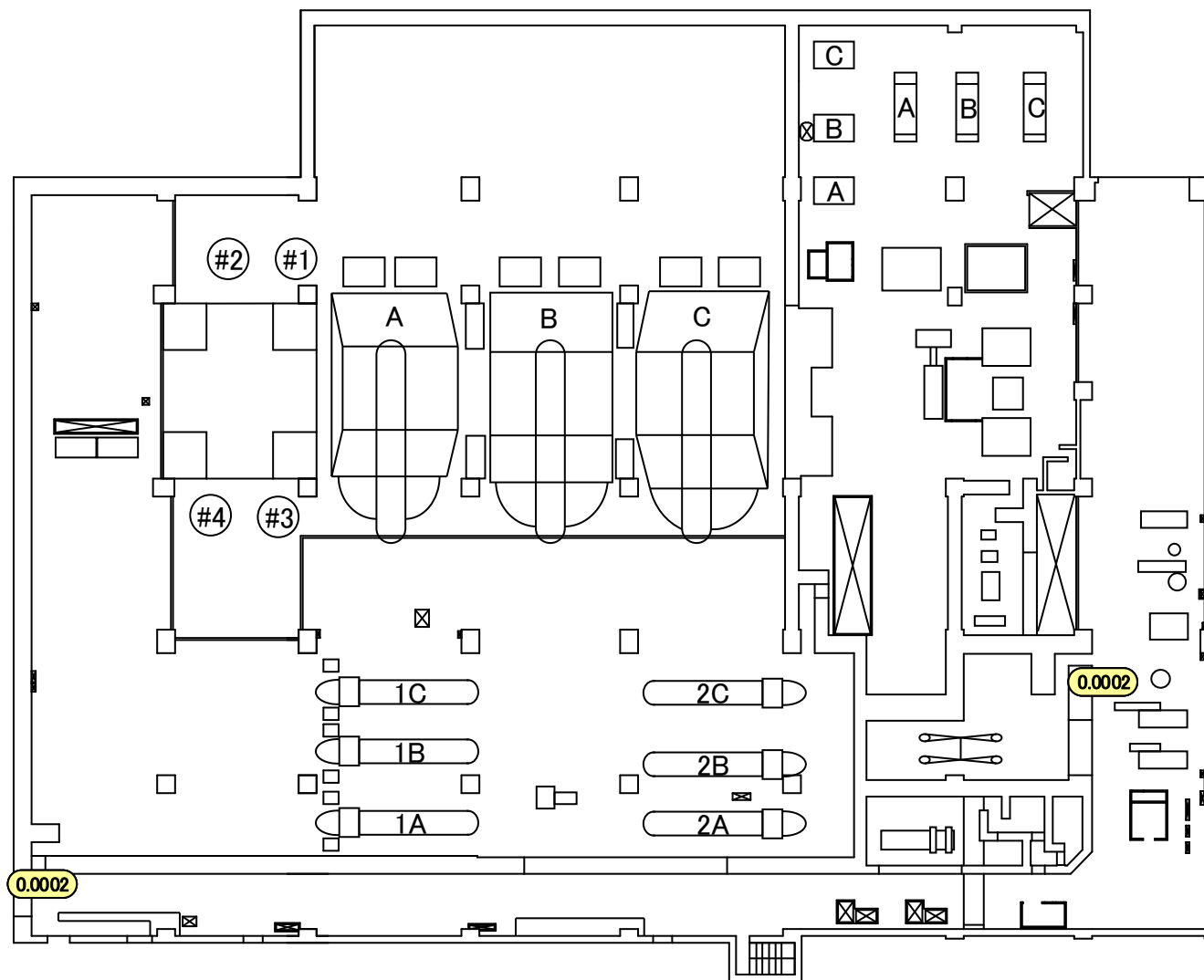
5号機 原子炉建屋 5階

[ 単位: mSv/h ]

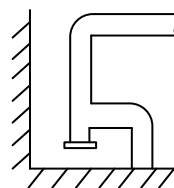




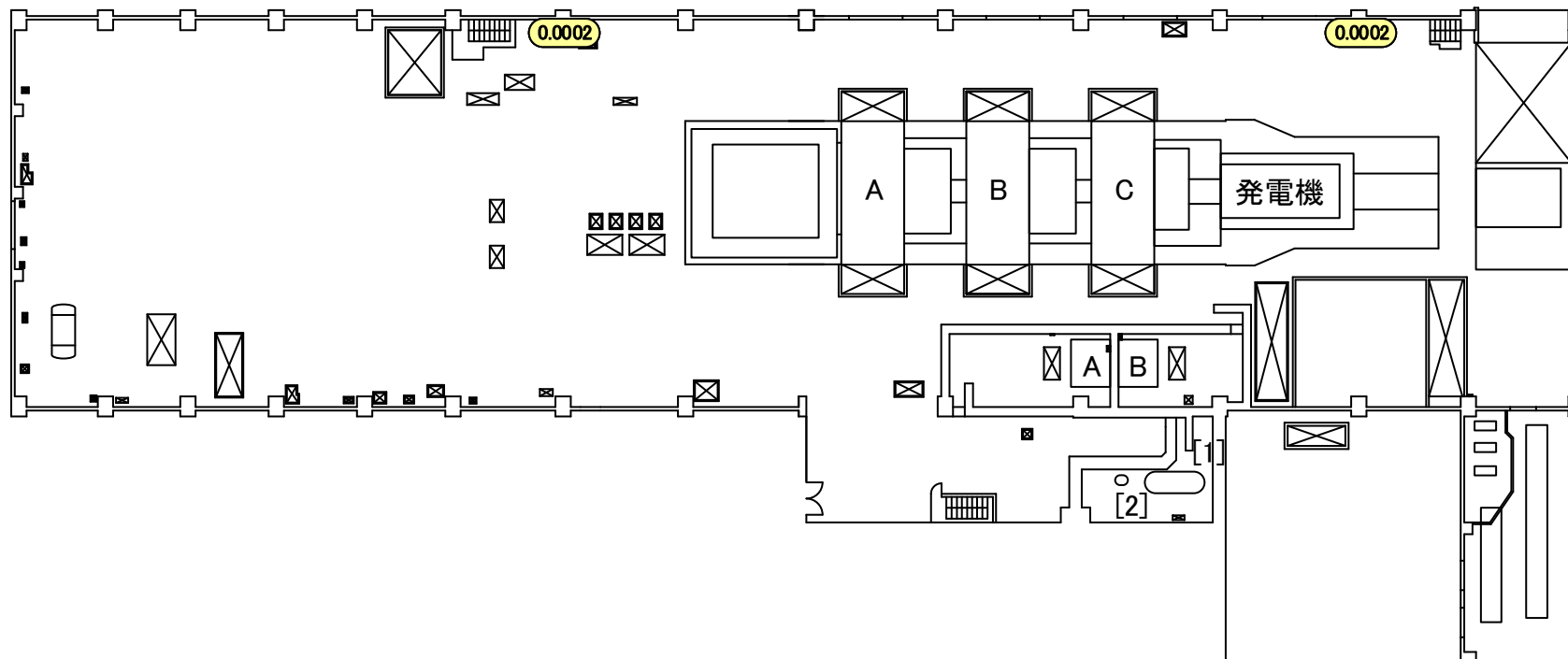
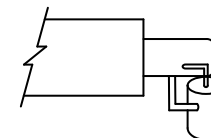


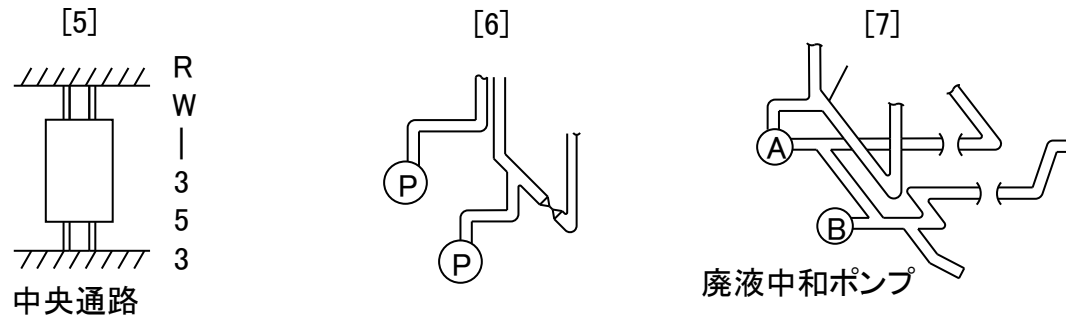
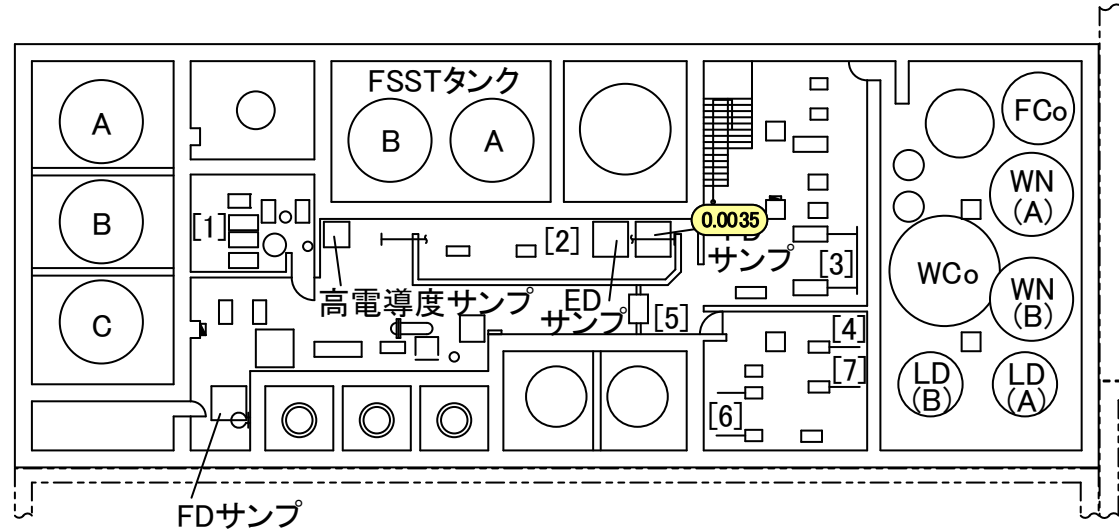
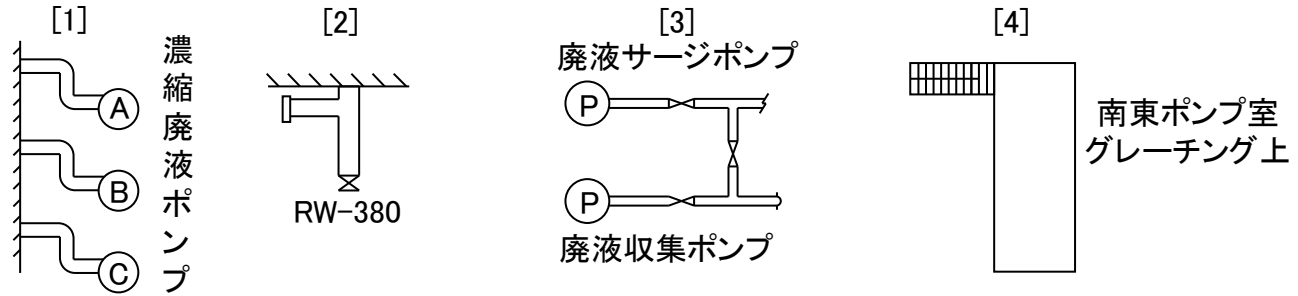


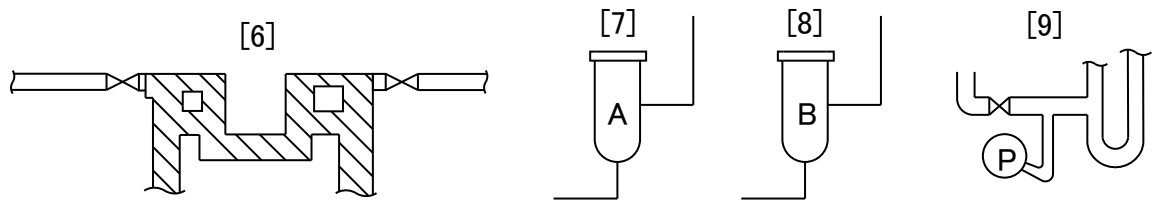
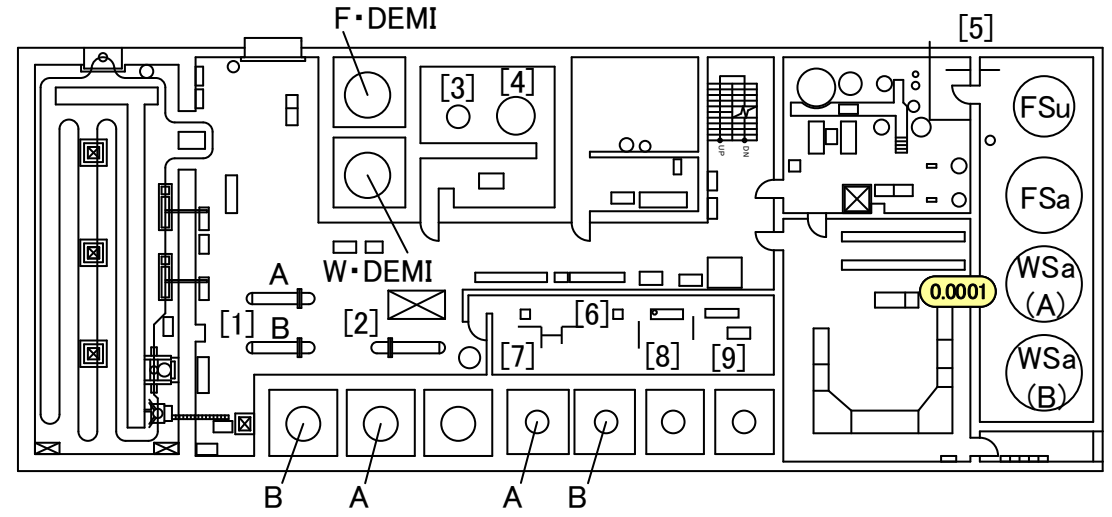
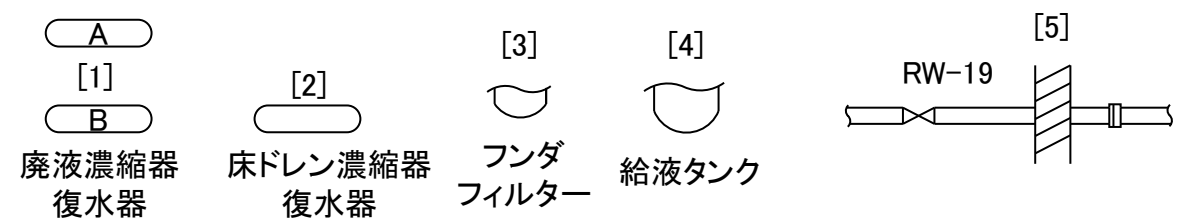
[1]  
AS-23



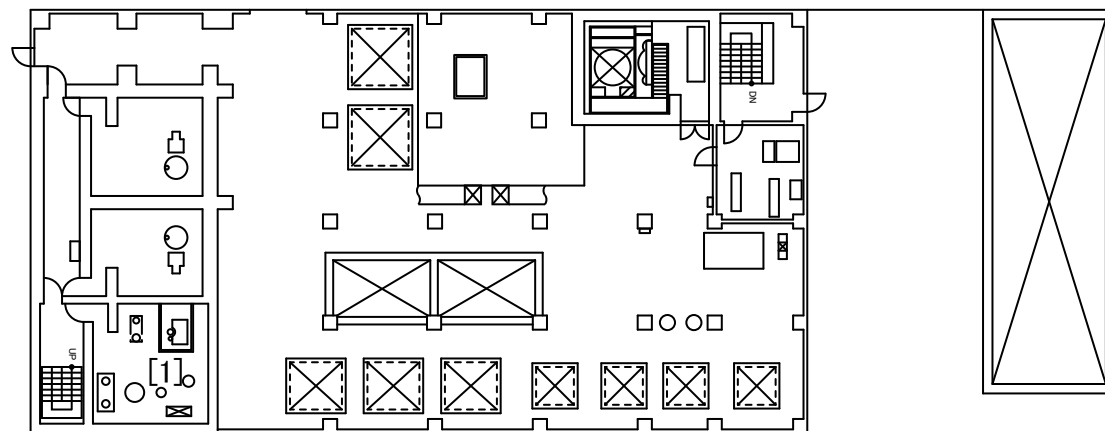
[2]  
エバポレータ







出口ストレーナ



[1]



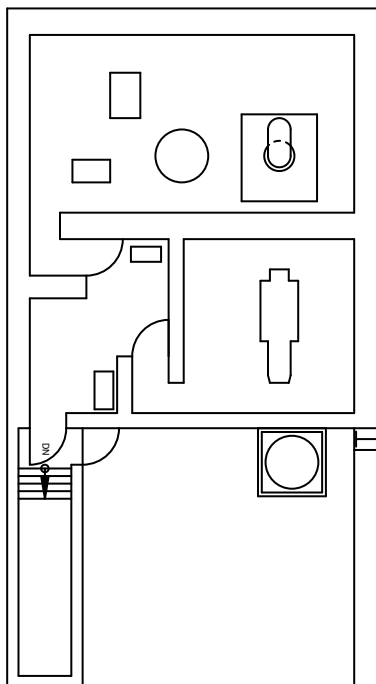
濃縮廃液計量タンク

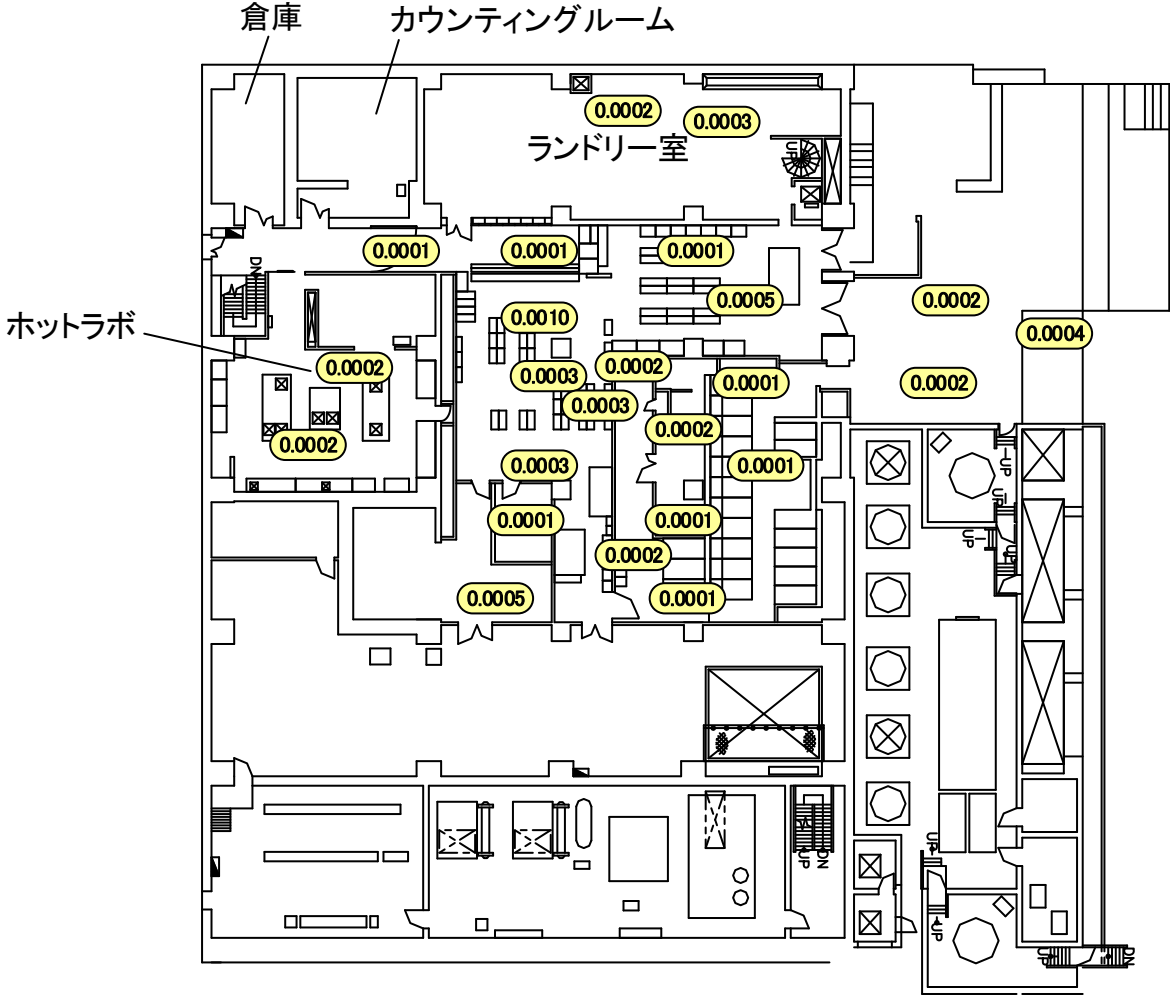
福島第一 原子力発電所

図面名称:

5号機 廃棄物処理建屋 3階

[ 単位: mSv/h ]







福島第一 原子力発電所

図面名称:

5・6号機 サービス建屋 2階

[ 単位: mSv/h ]

