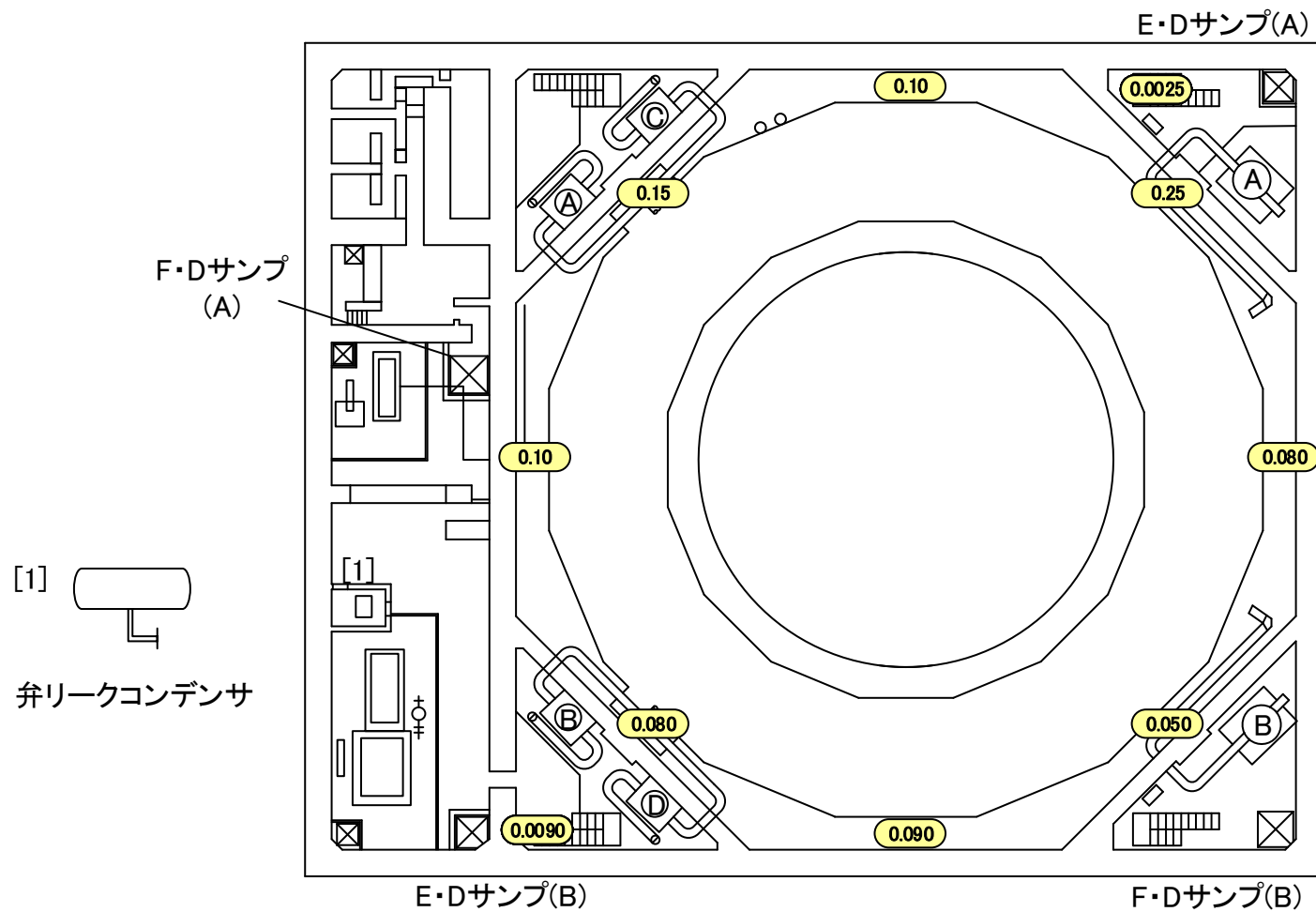


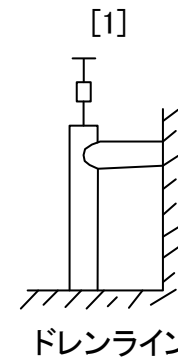
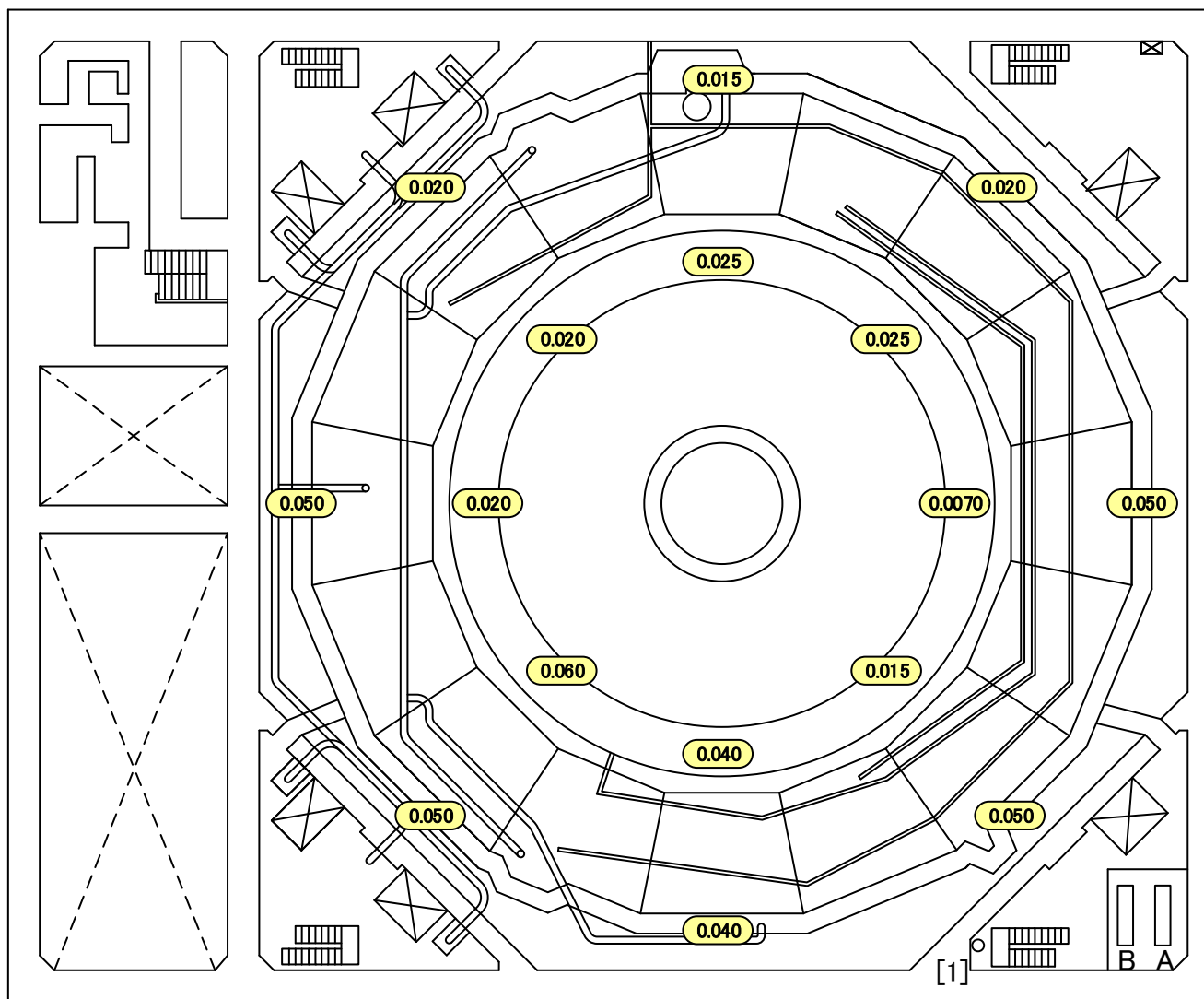
2018年2月28日  
東京電力ホールディングス株式会社  
福島第一廃炉推進カンパニー

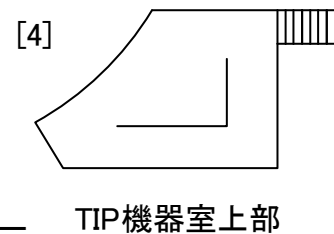
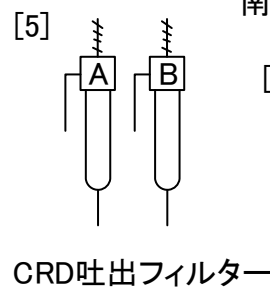
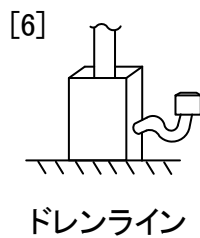
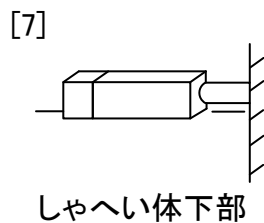
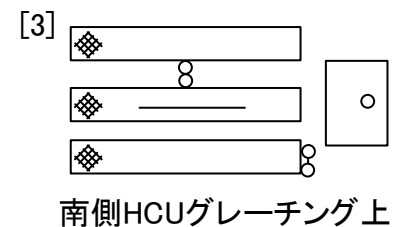
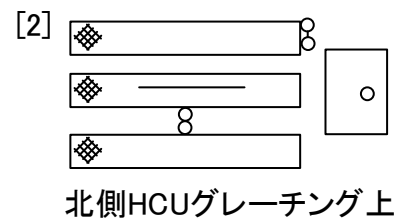
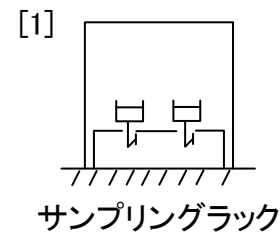
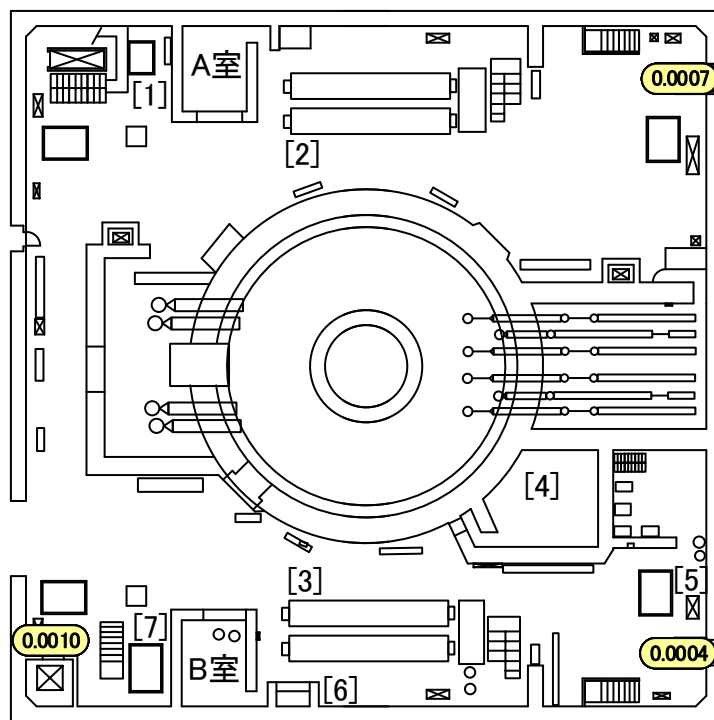
# 建屋内の空間線量率について

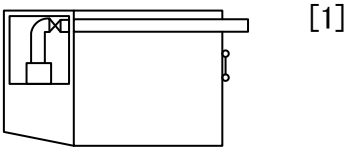
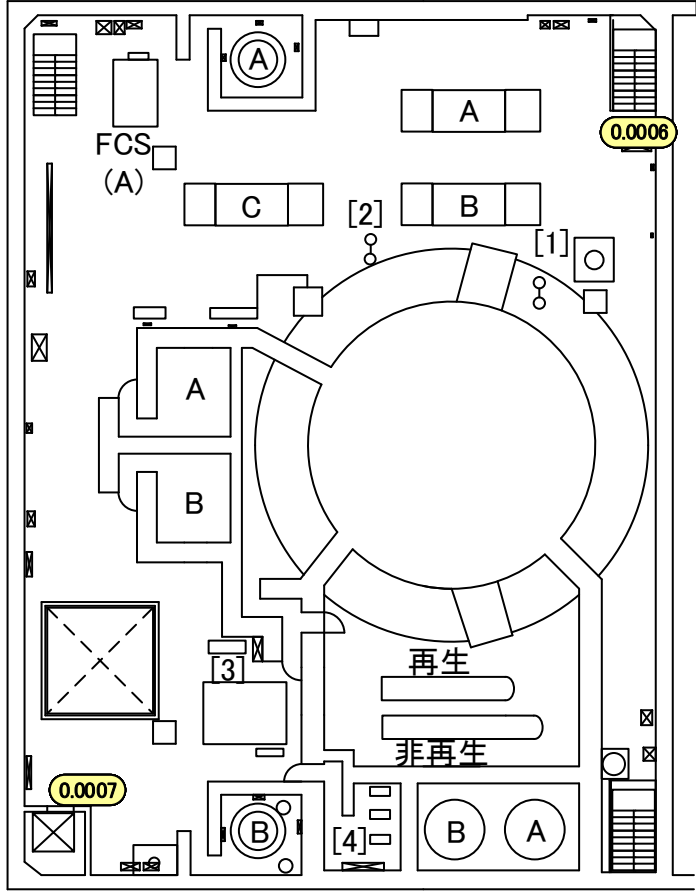
データ採取期間

- ・ 5号機 : 2017年12月1日～2017年12月31日

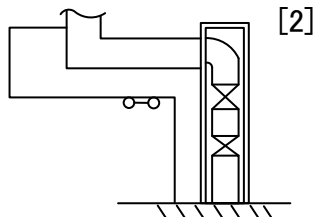




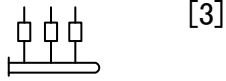




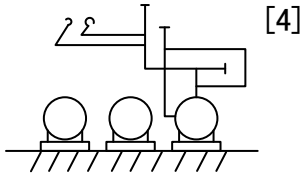
[1] 北東側グレーチング上



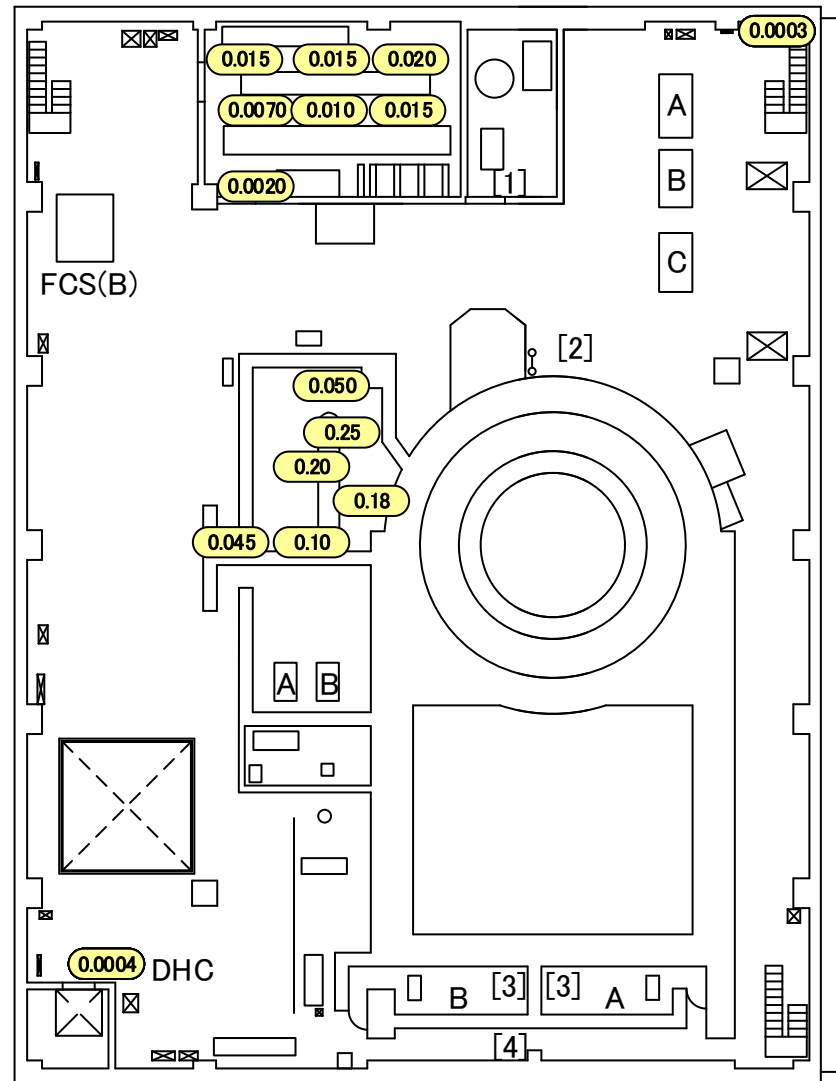
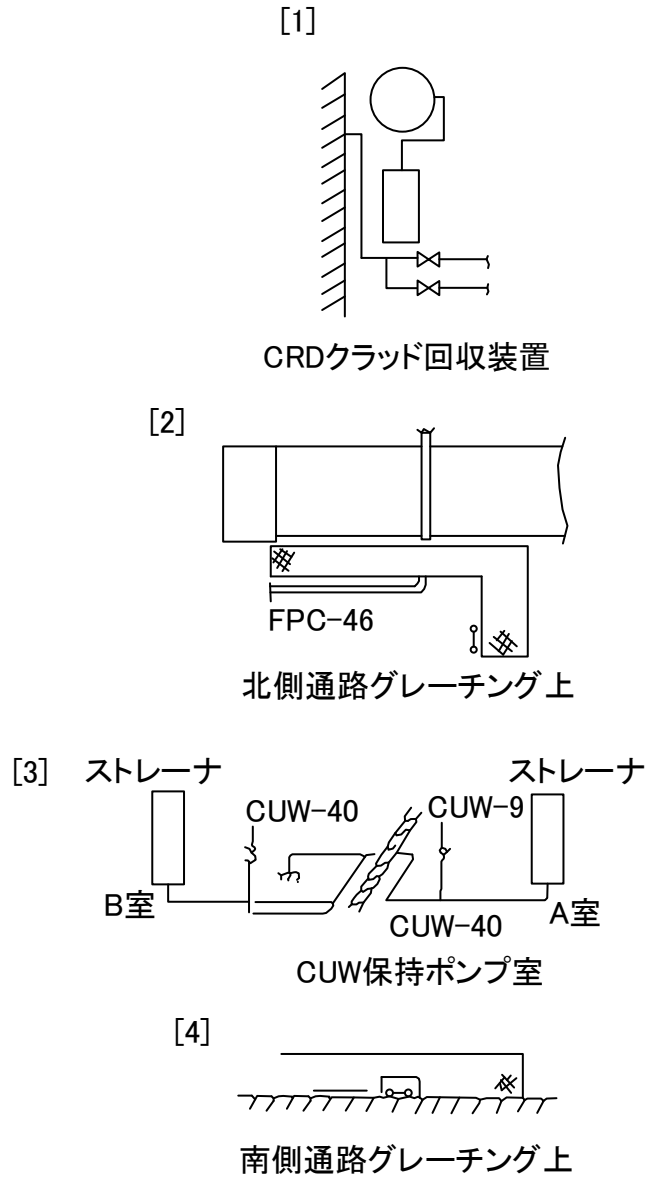
[2] 北側グレーチング上

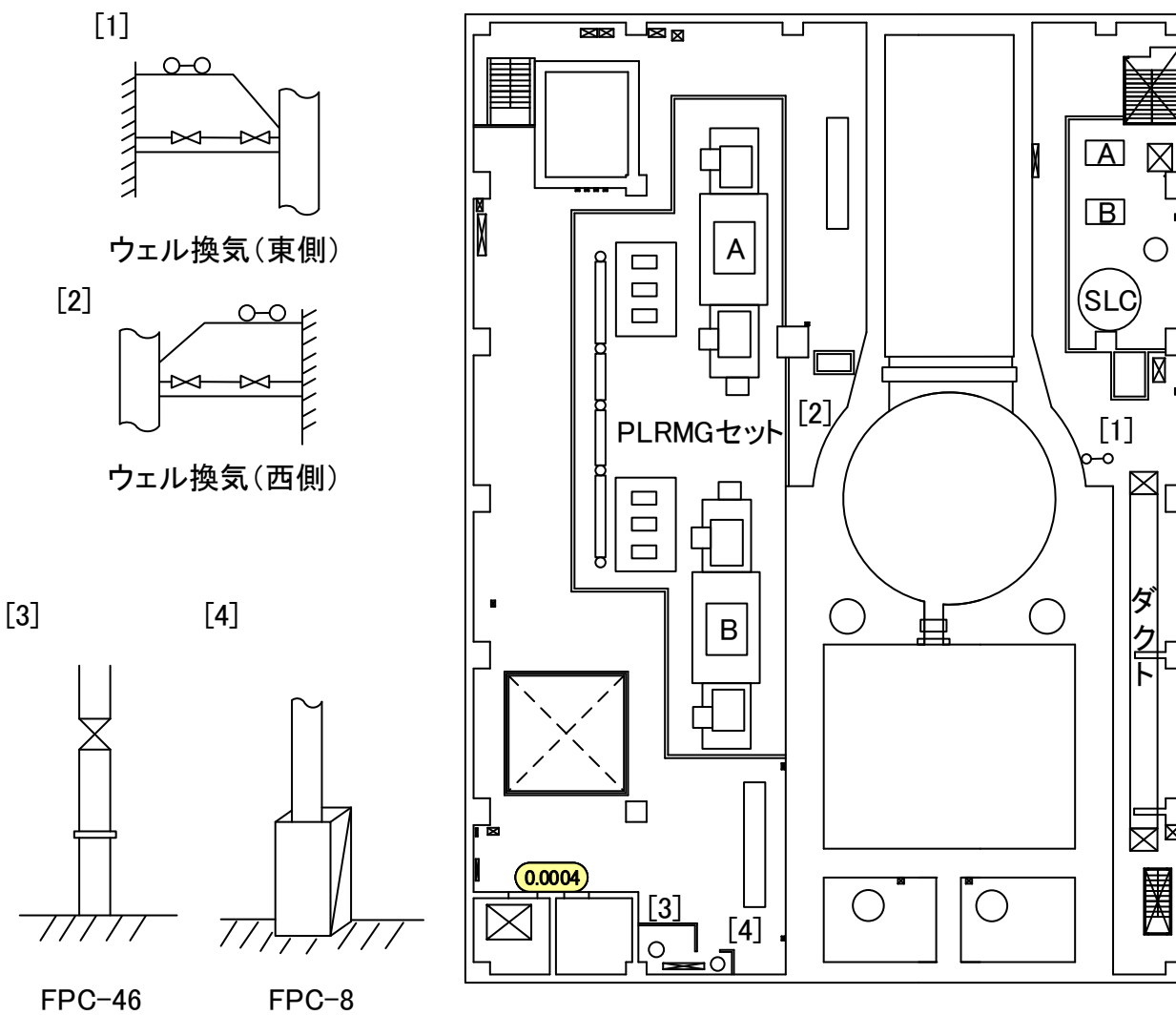


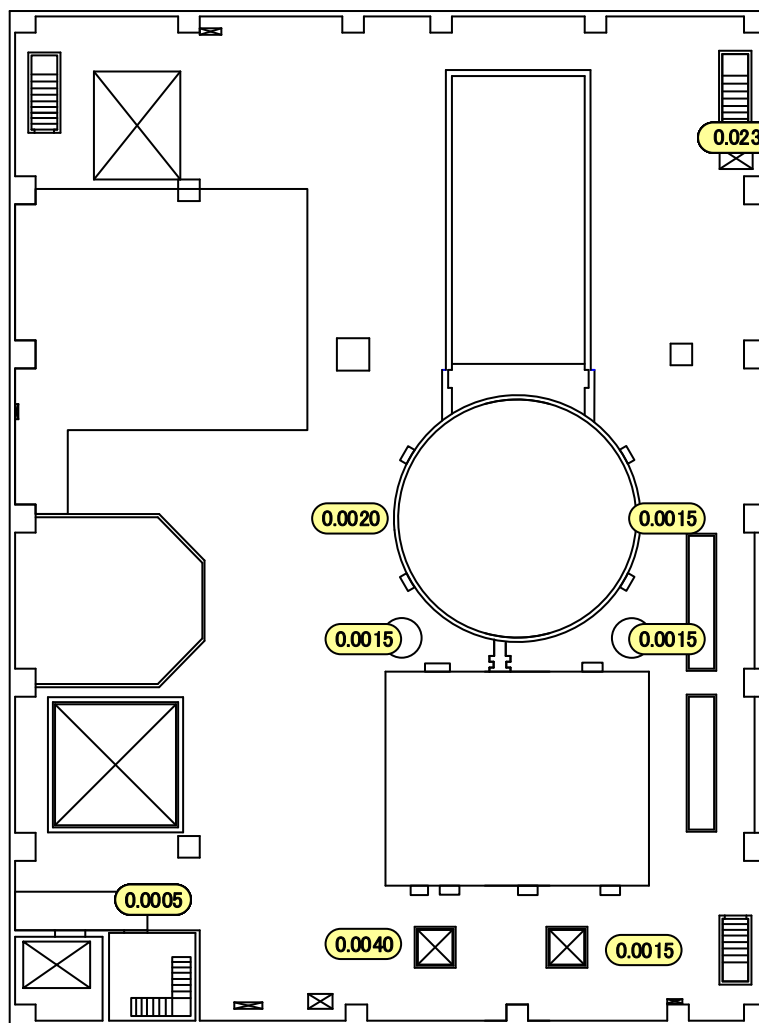
[3] 計装ラック下部



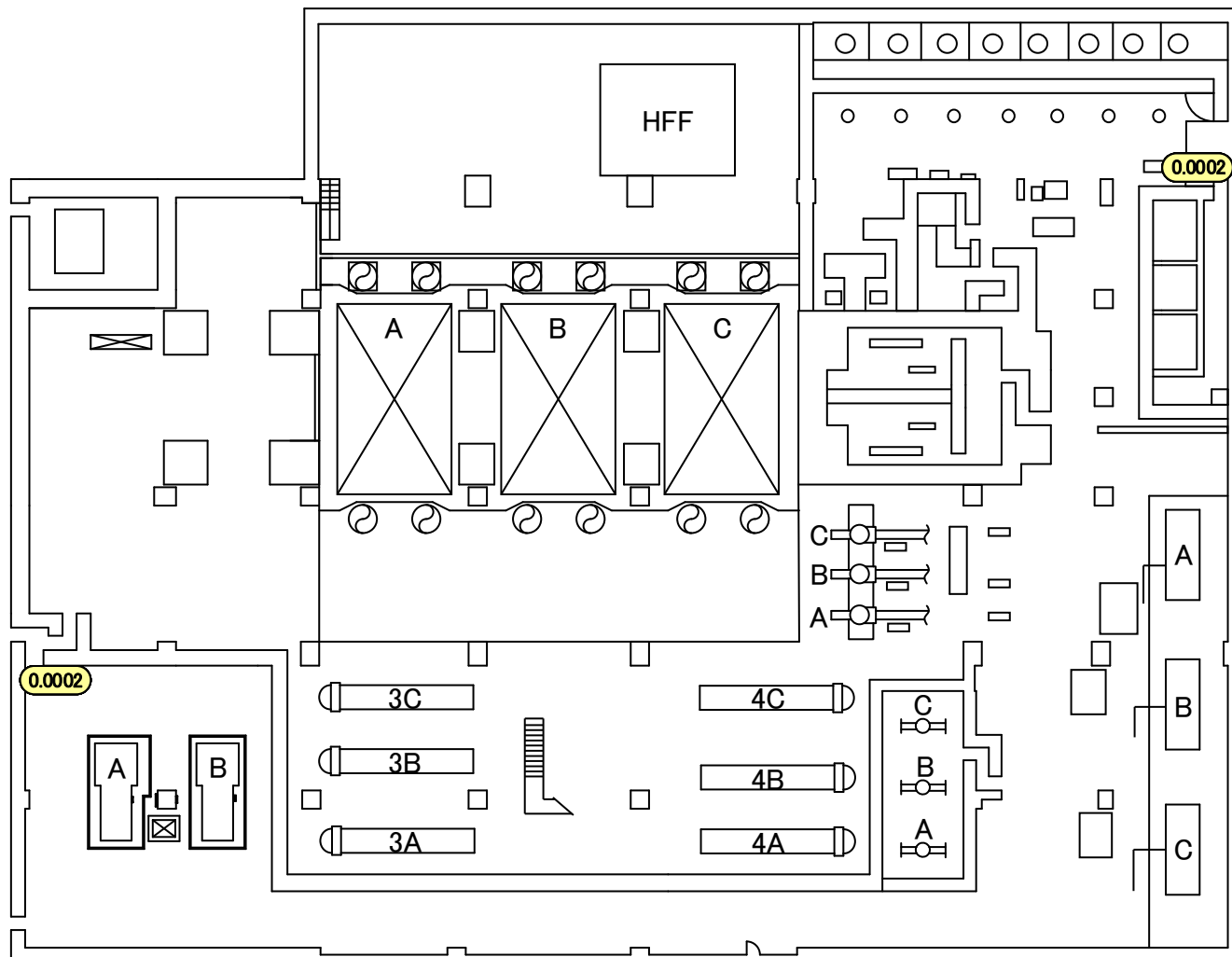
[4] スラッジ放出混合ポンプ

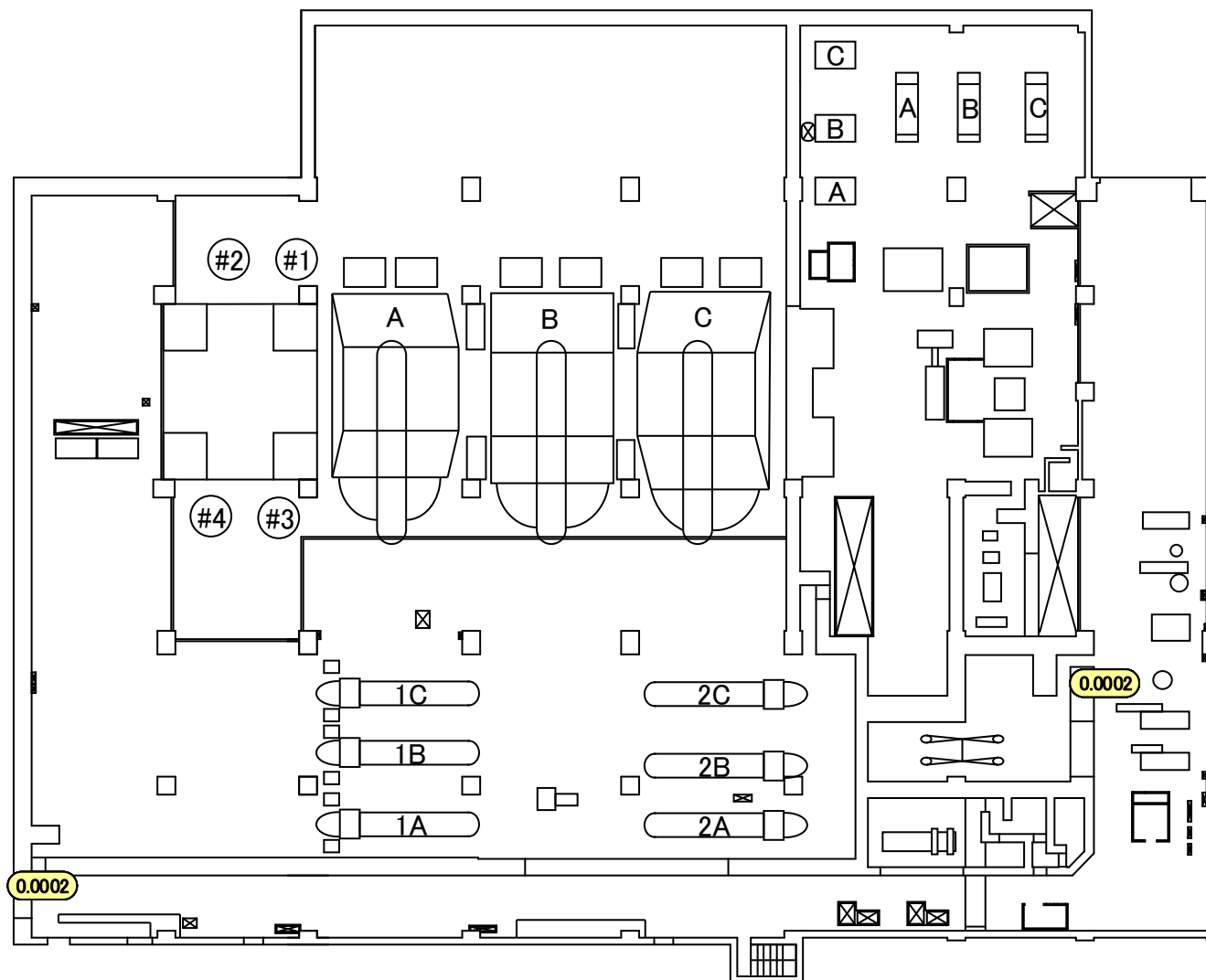






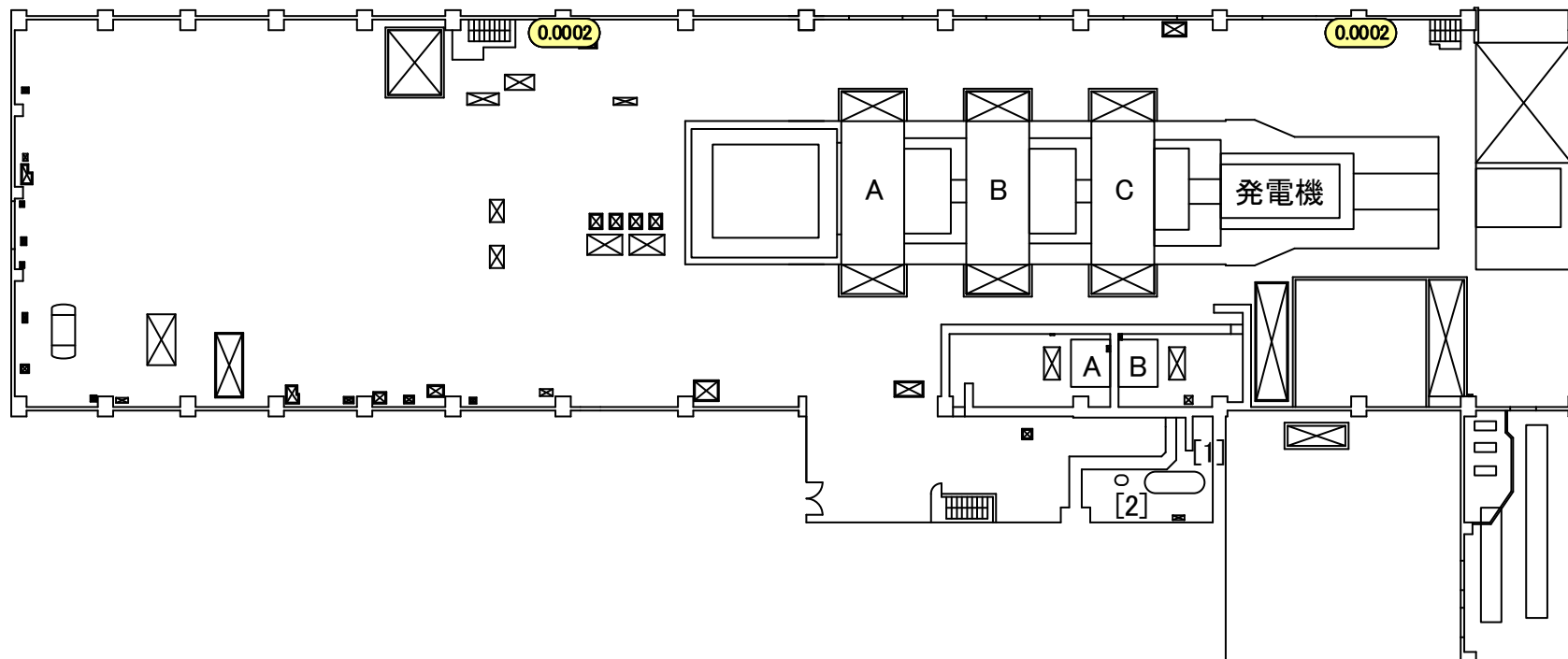
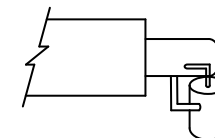
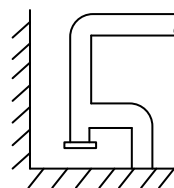


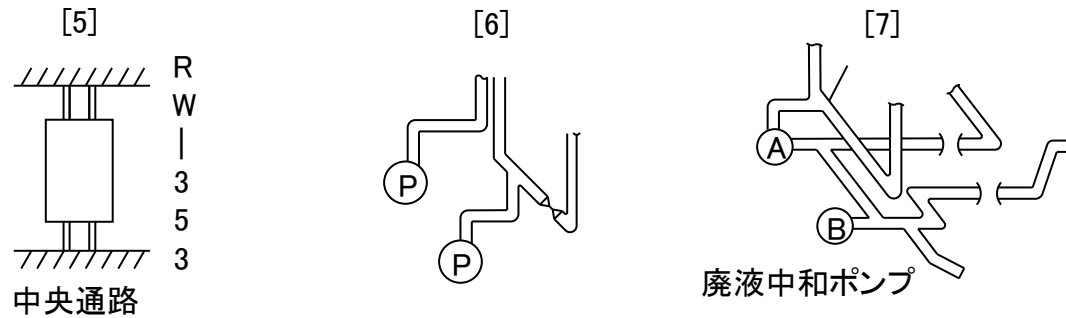
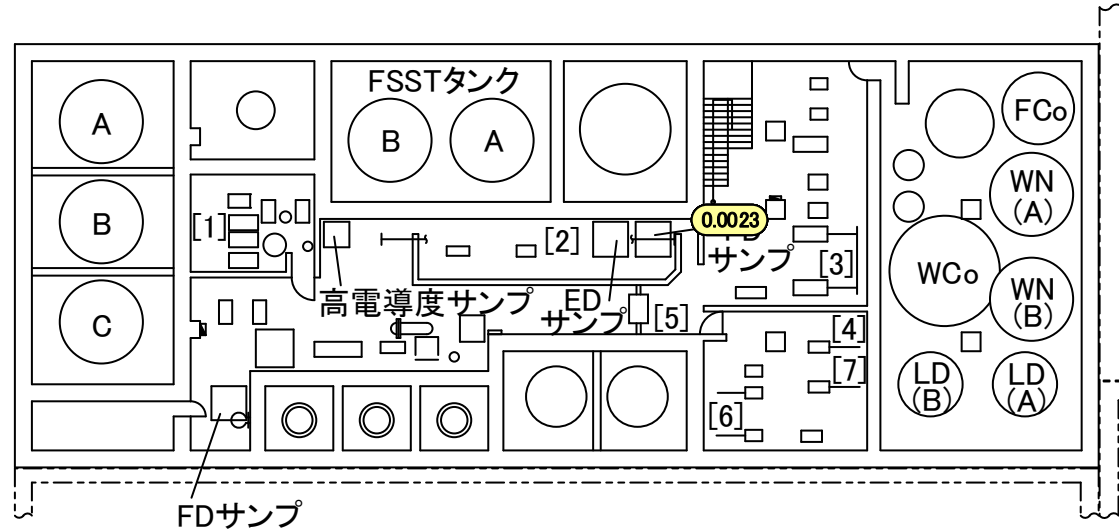
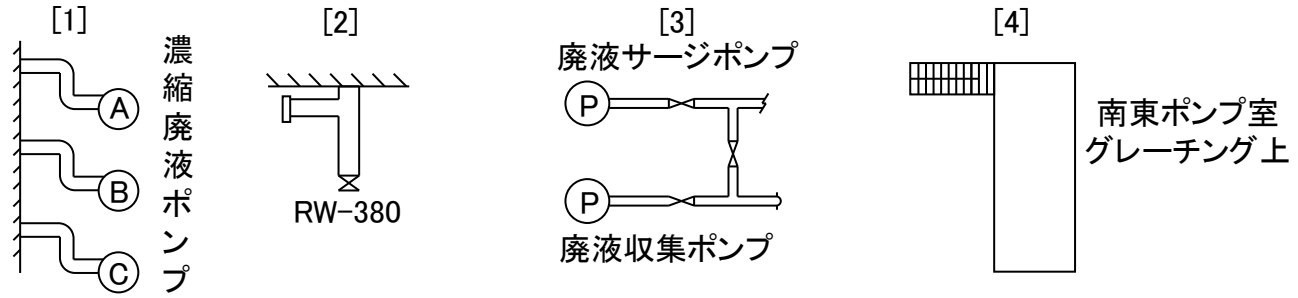


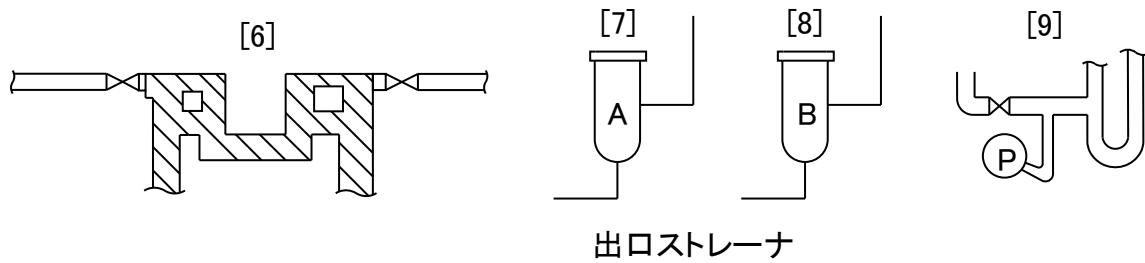
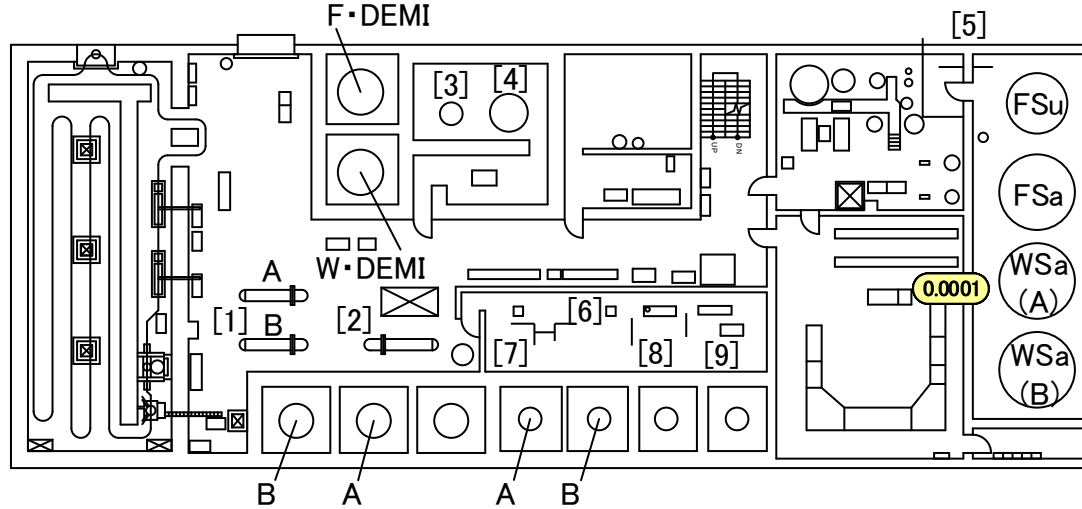
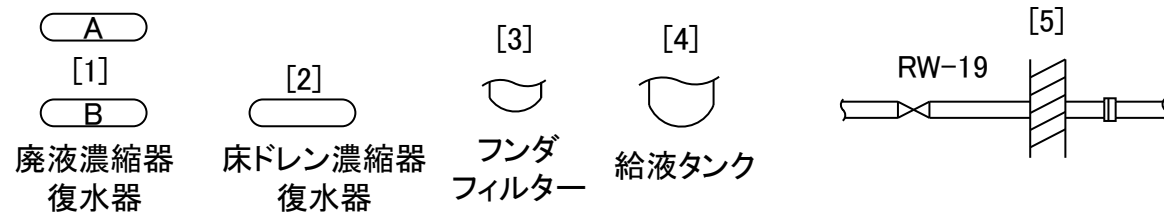


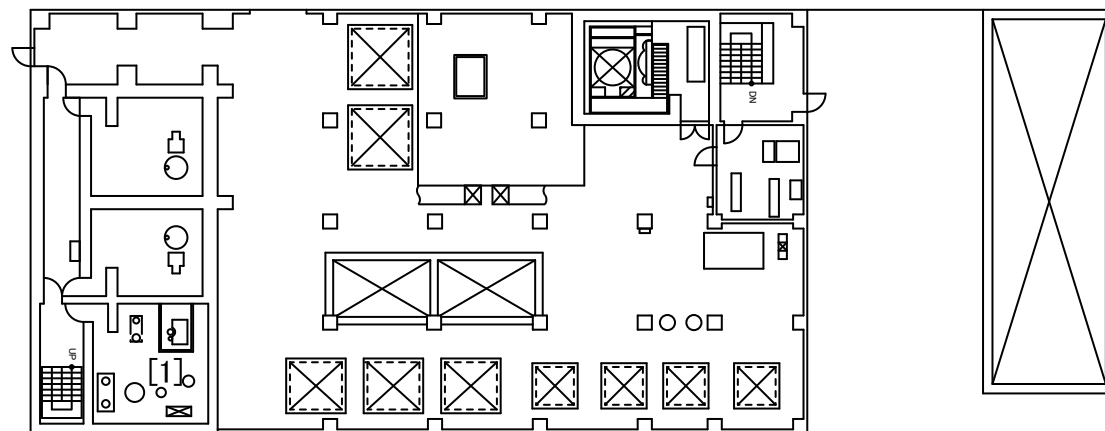
[1]  
AS-23

[2]  
エバポレータ









[1]



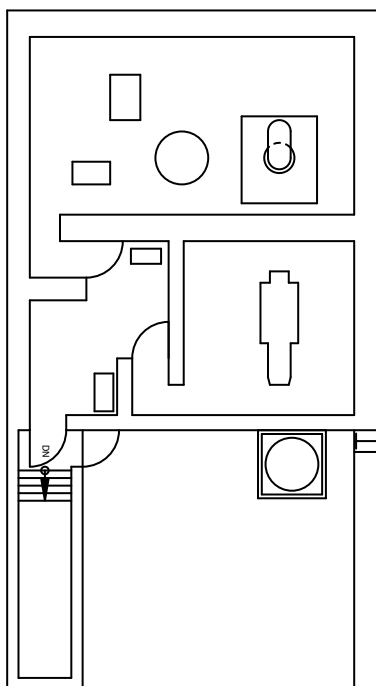
濃縮廃液計量タンク

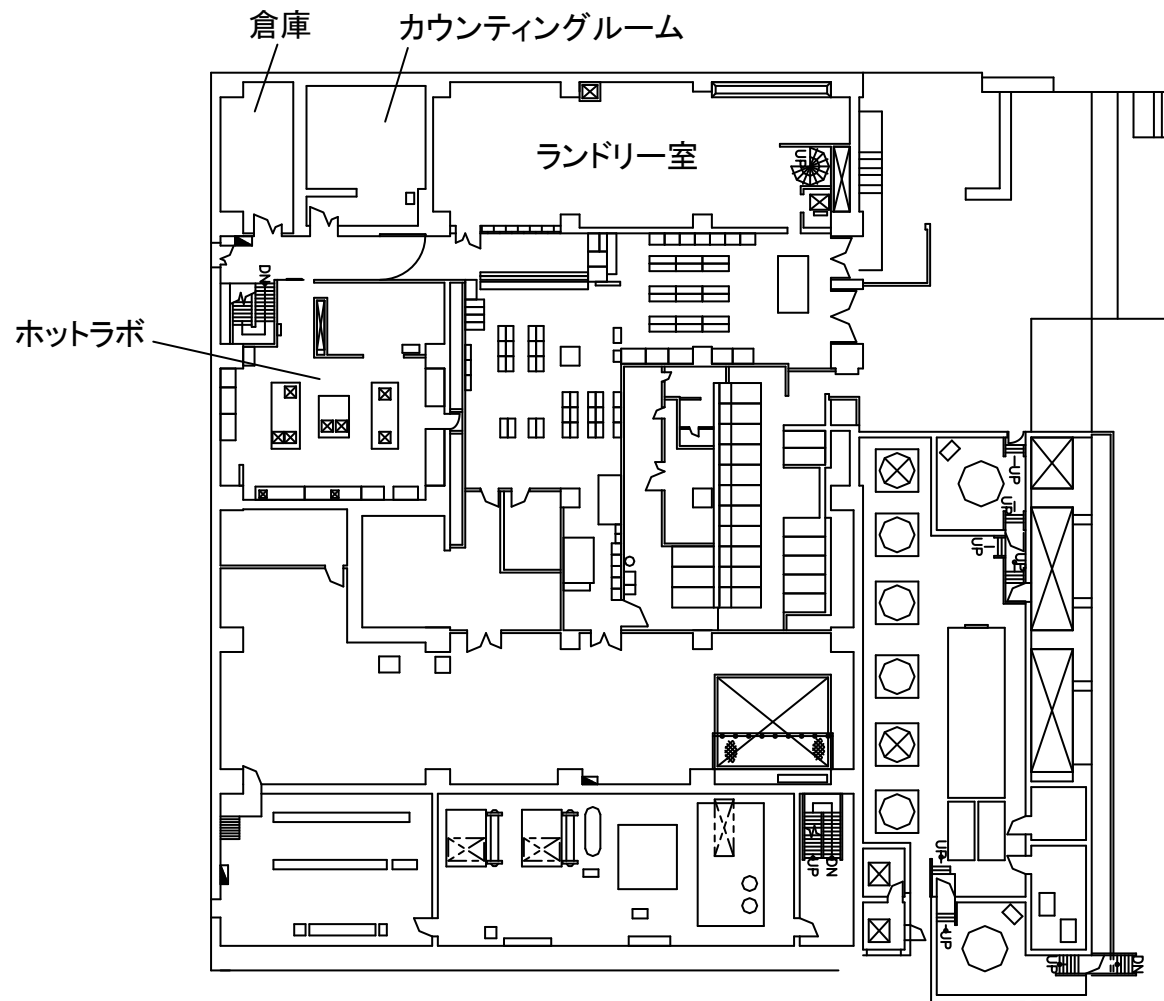
福島第一 原子力発電所

図面名称:

5号機 廃棄物処理建屋 3階

[ 単位: mSv/h ]







福島第一 原子力発電所

図面名称:

5・6号機 サービス建屋 2階

[ 単位: mSv/h ]

