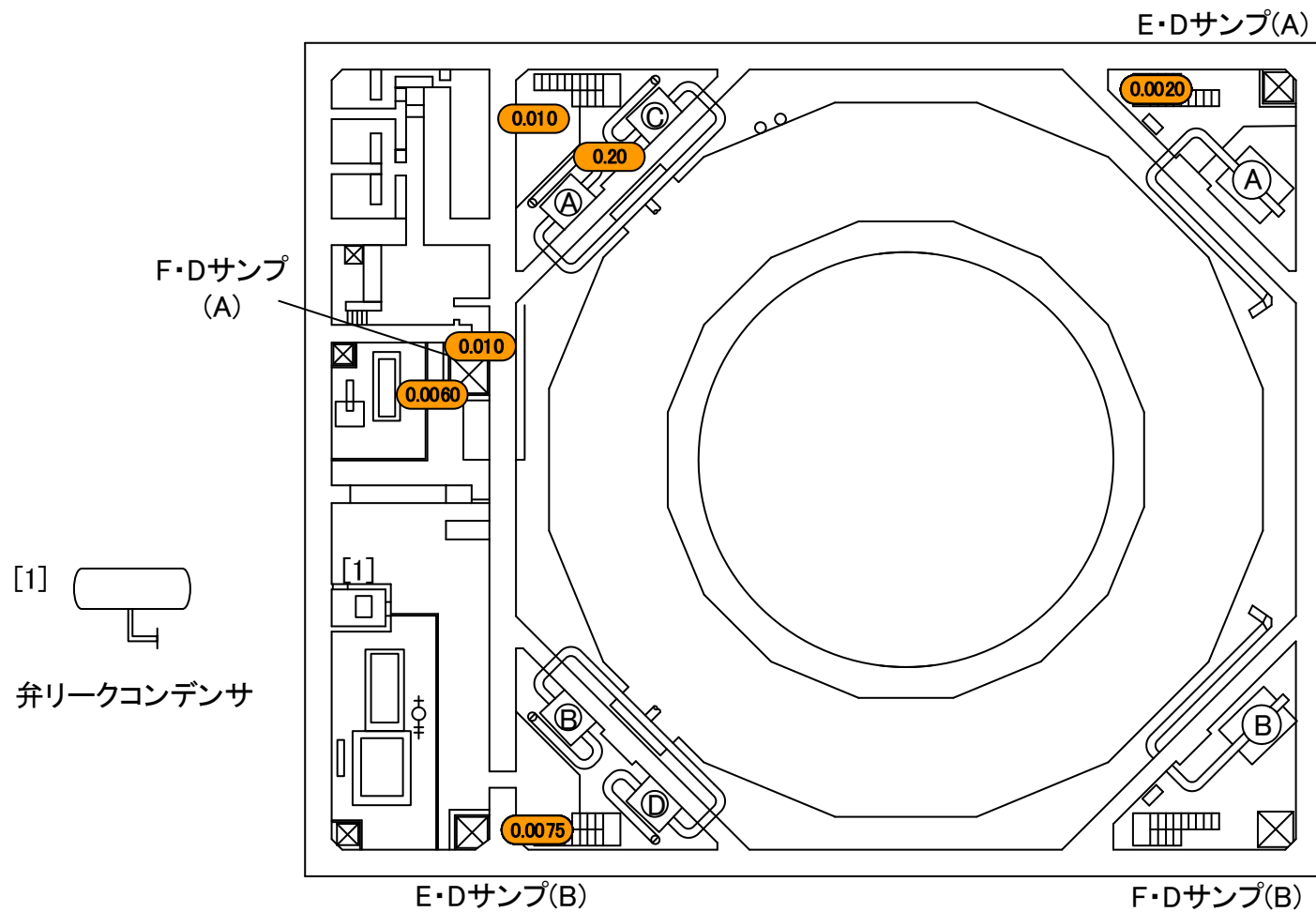


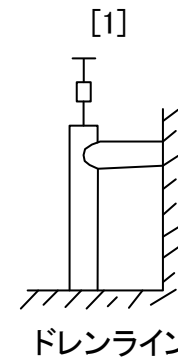
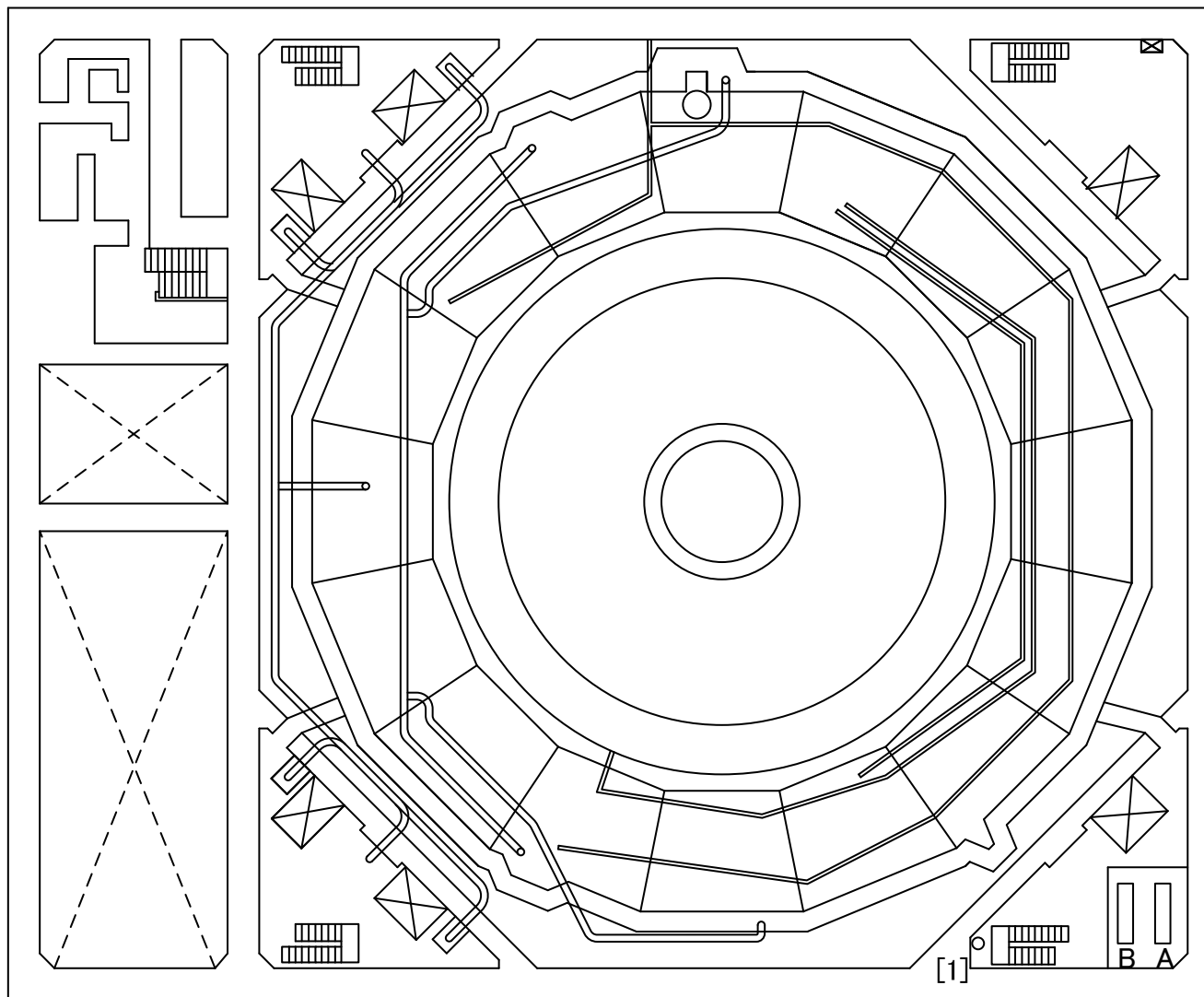
2020年8月31日
東京電力ホールディングス株式会社
福島第一廃炉推進カンパニー

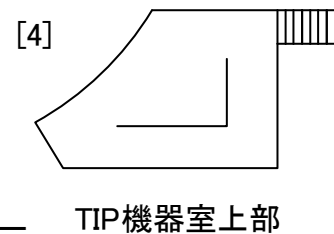
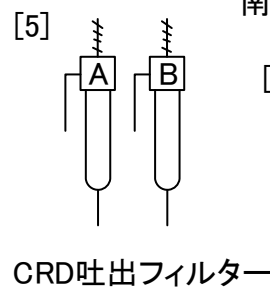
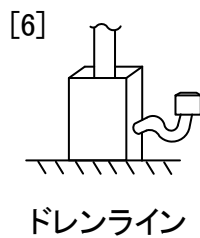
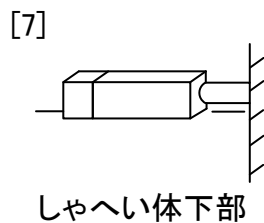
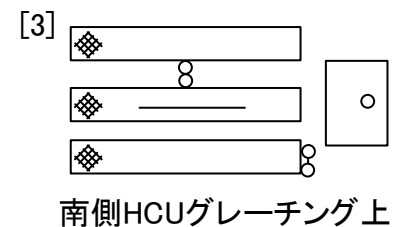
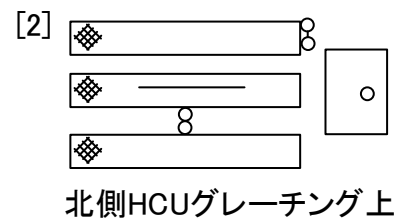
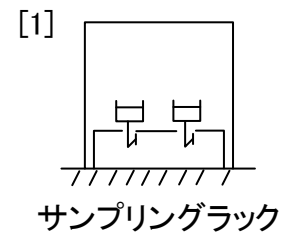
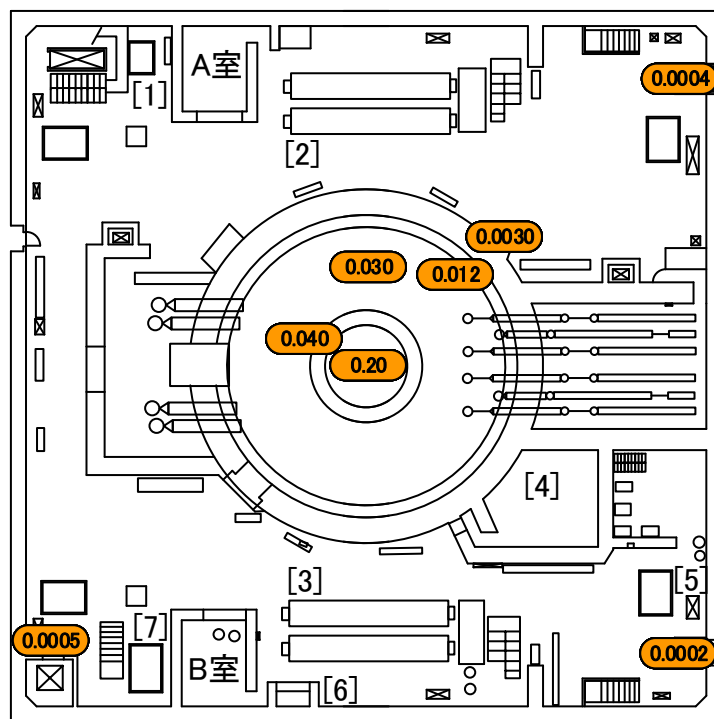
建屋内の空間線量率について

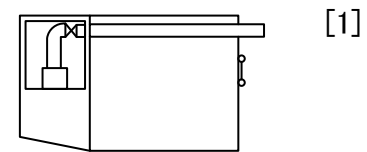
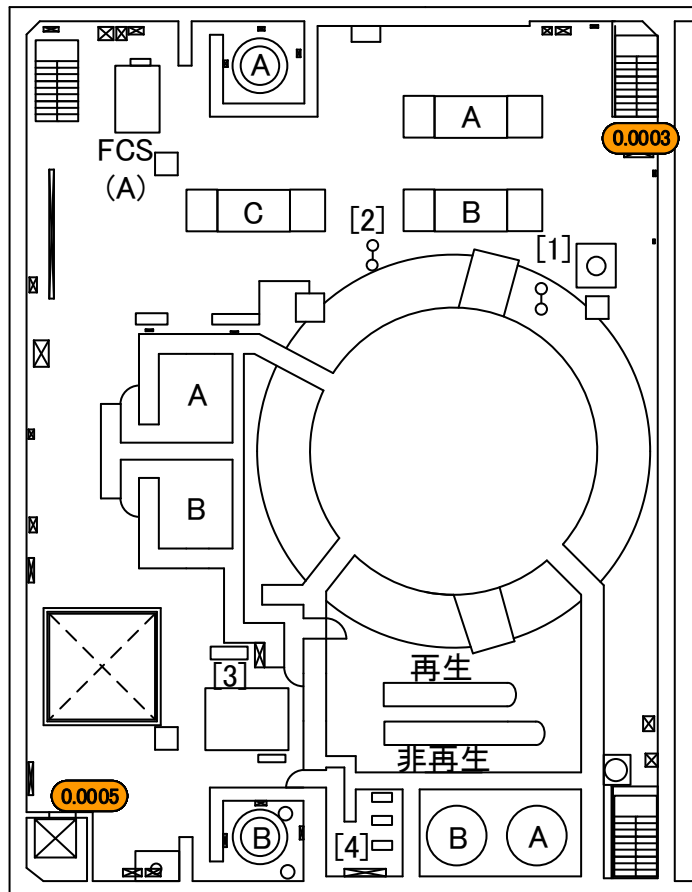
データ採取期間

- ・ 5号機 : 2019年4月1日～2020年3月31日

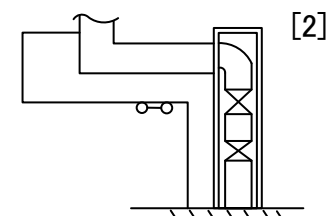




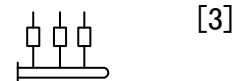




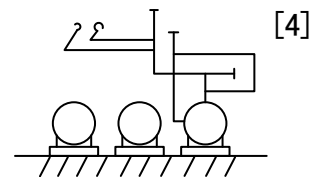
北東側グレーチング上



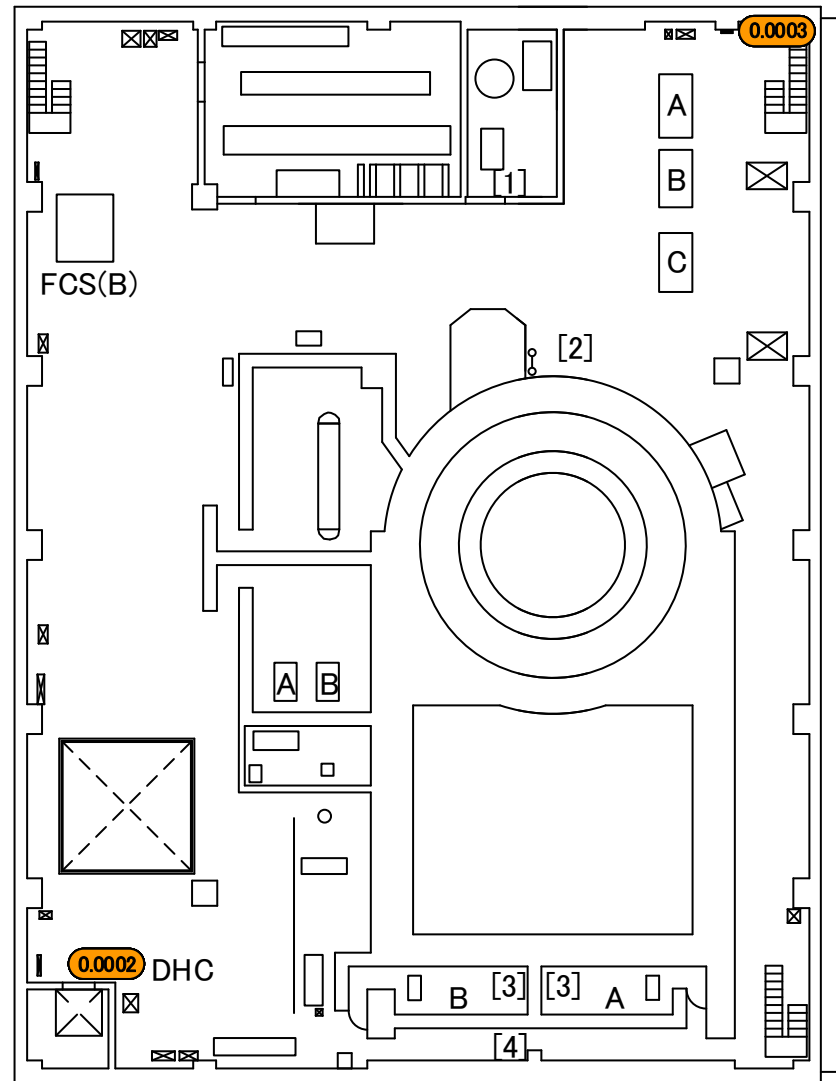
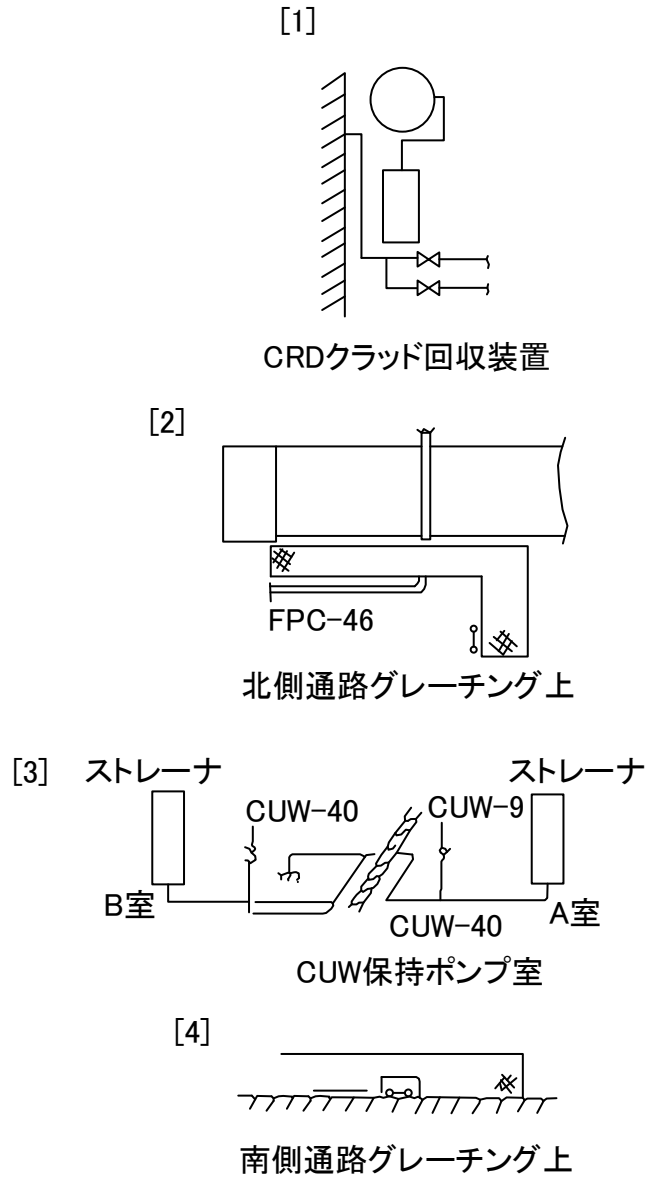
北側グレーチング上

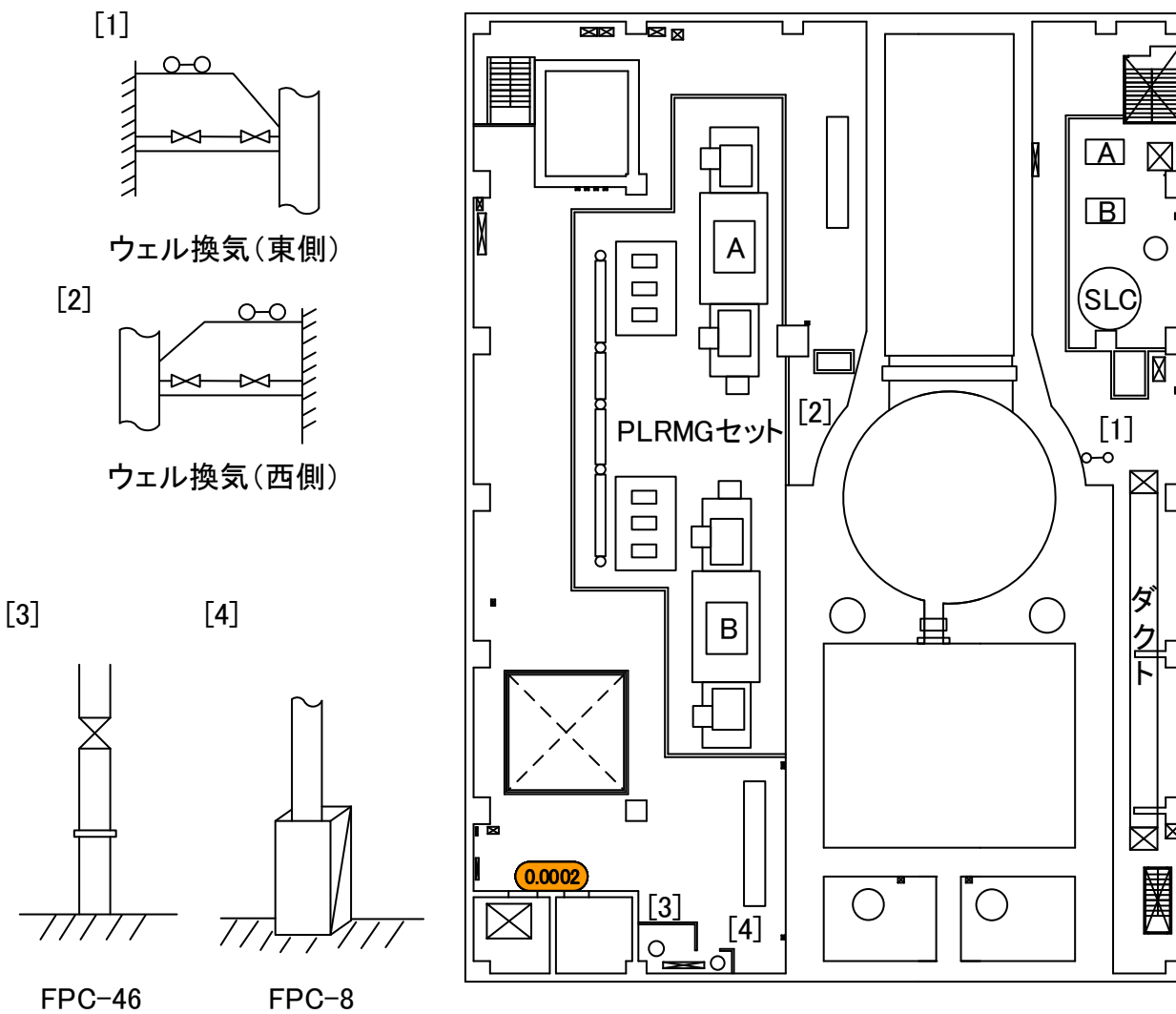


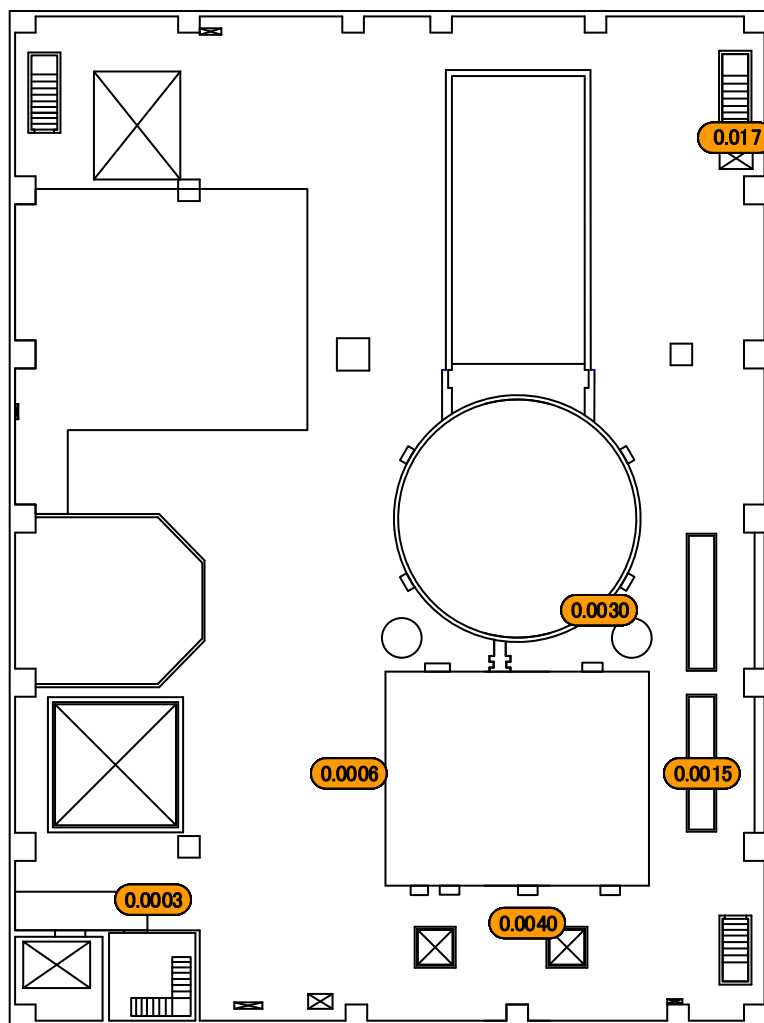
計装ラック下部

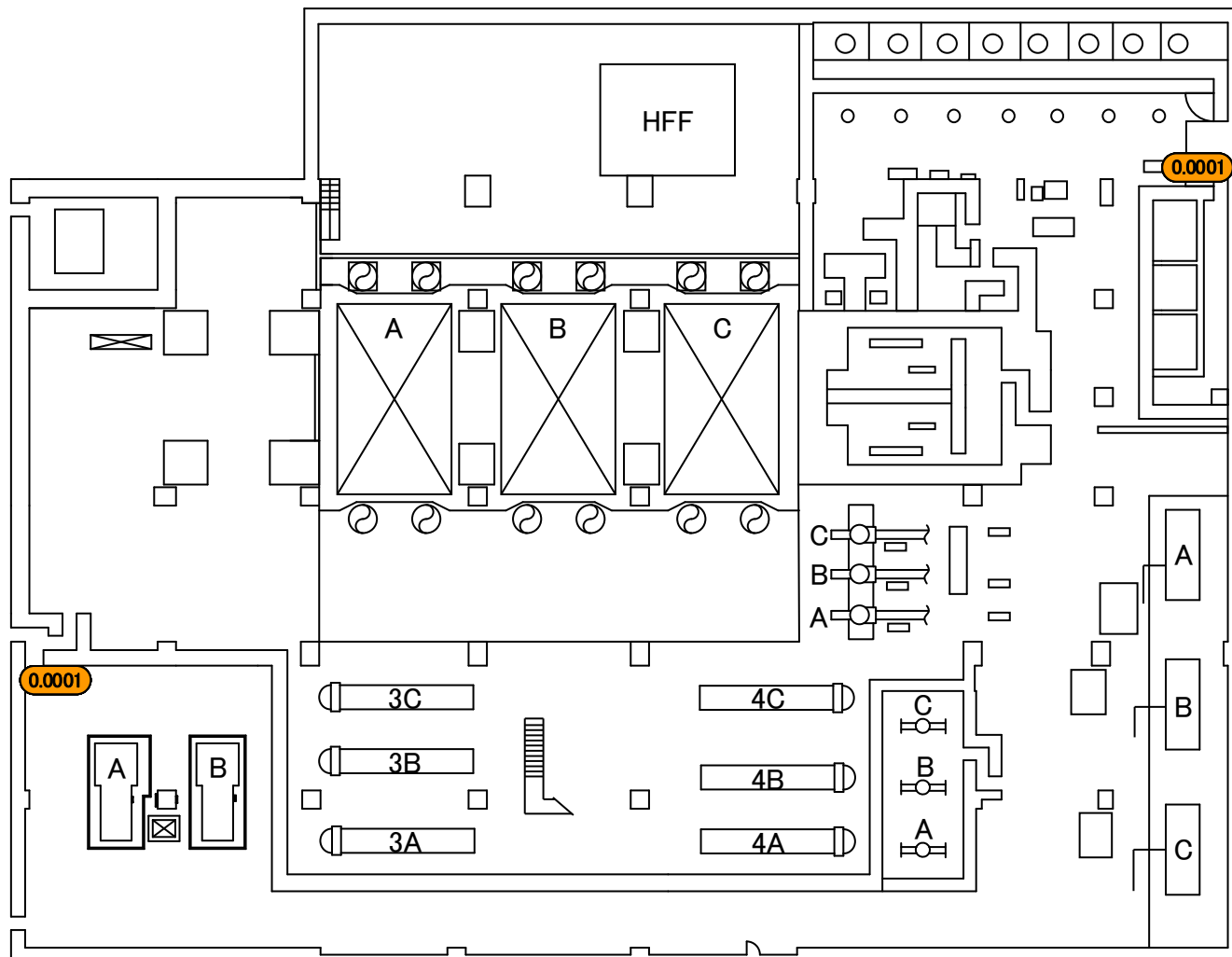


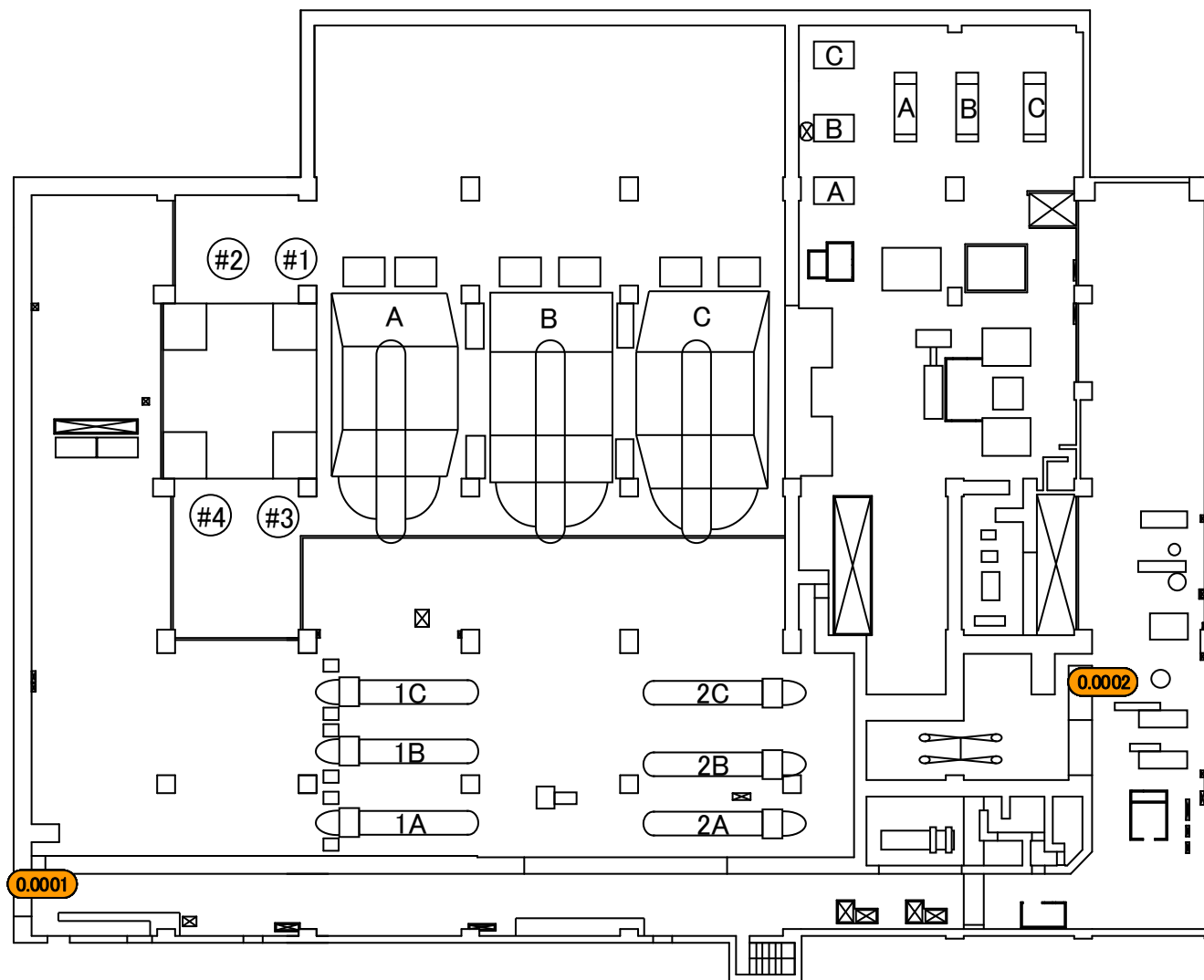
スラッジ放出混合ポンプ



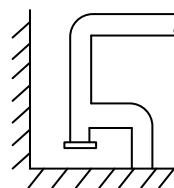




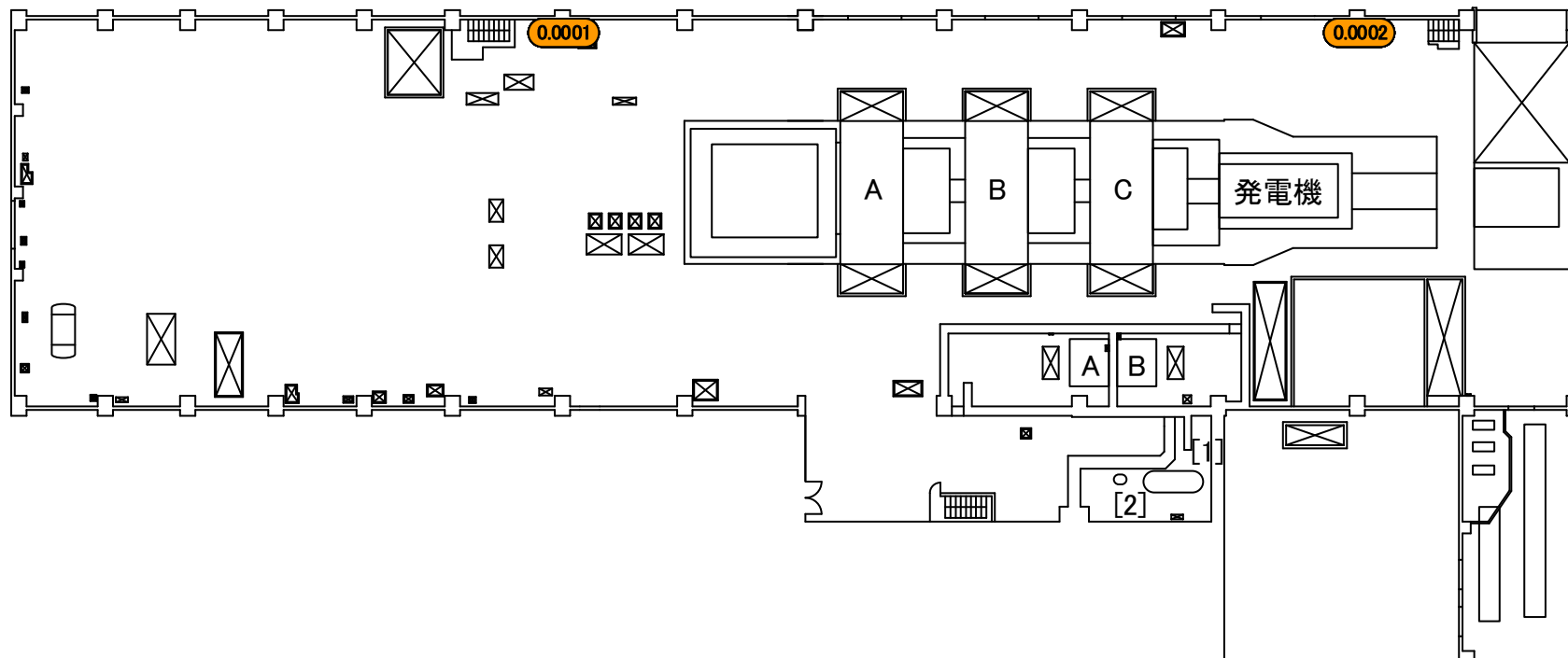
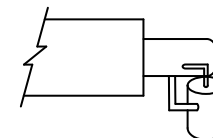


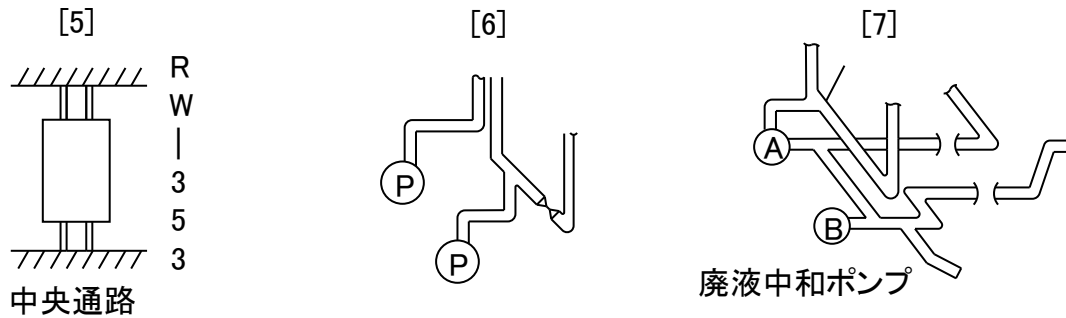
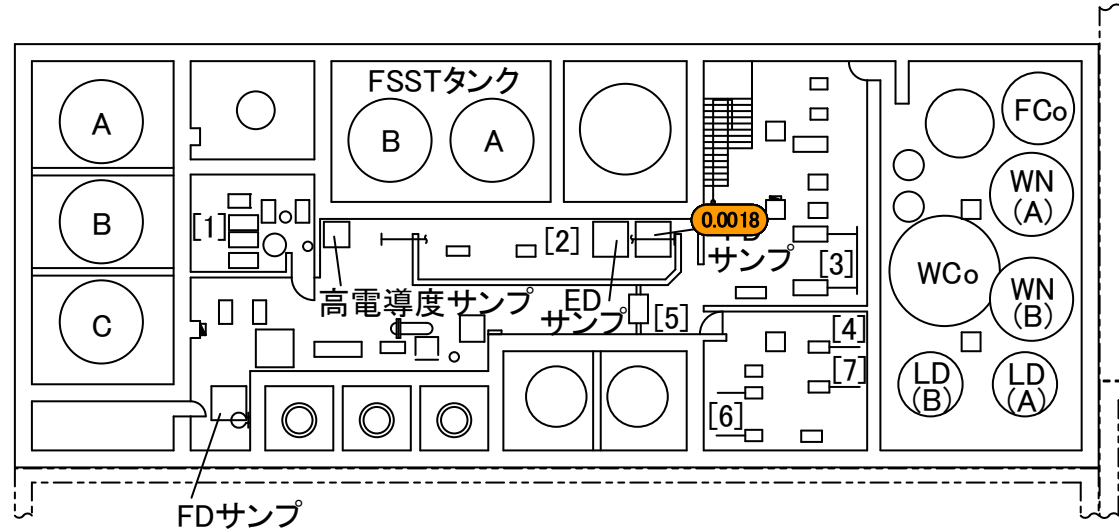
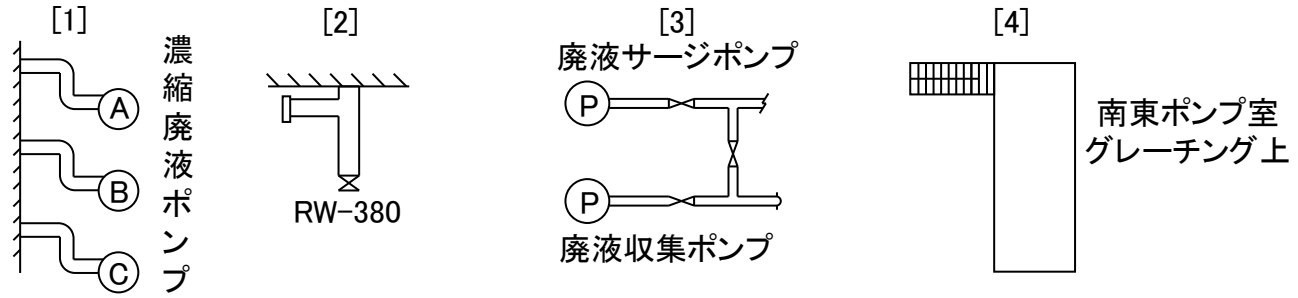


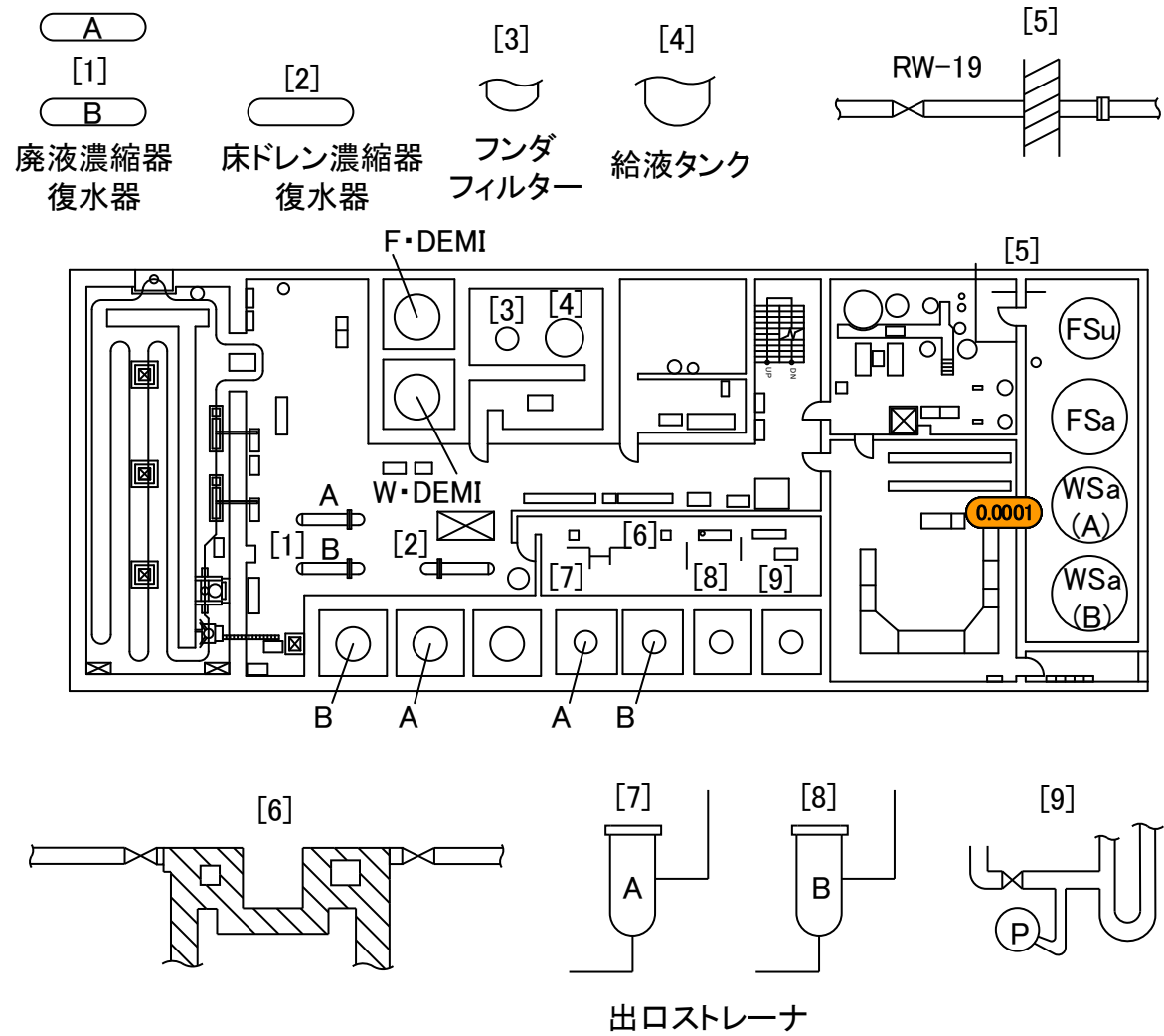
[1]
AS-23

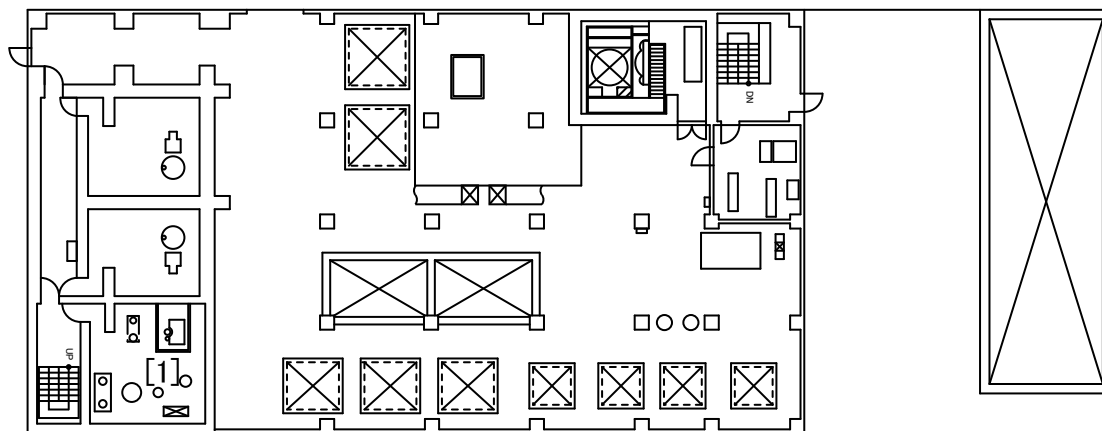


[2]
エバポレータ









[1]



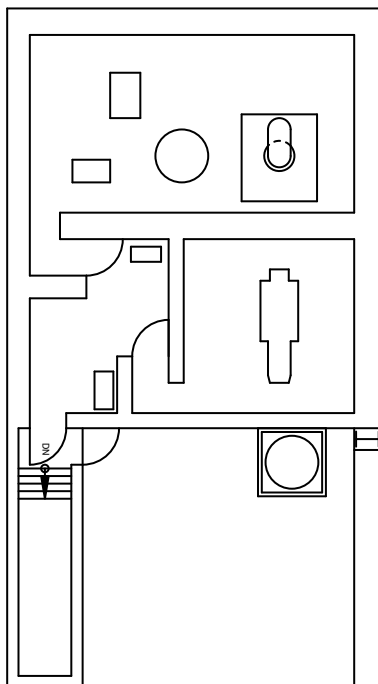
濃縮廃液計量タンク

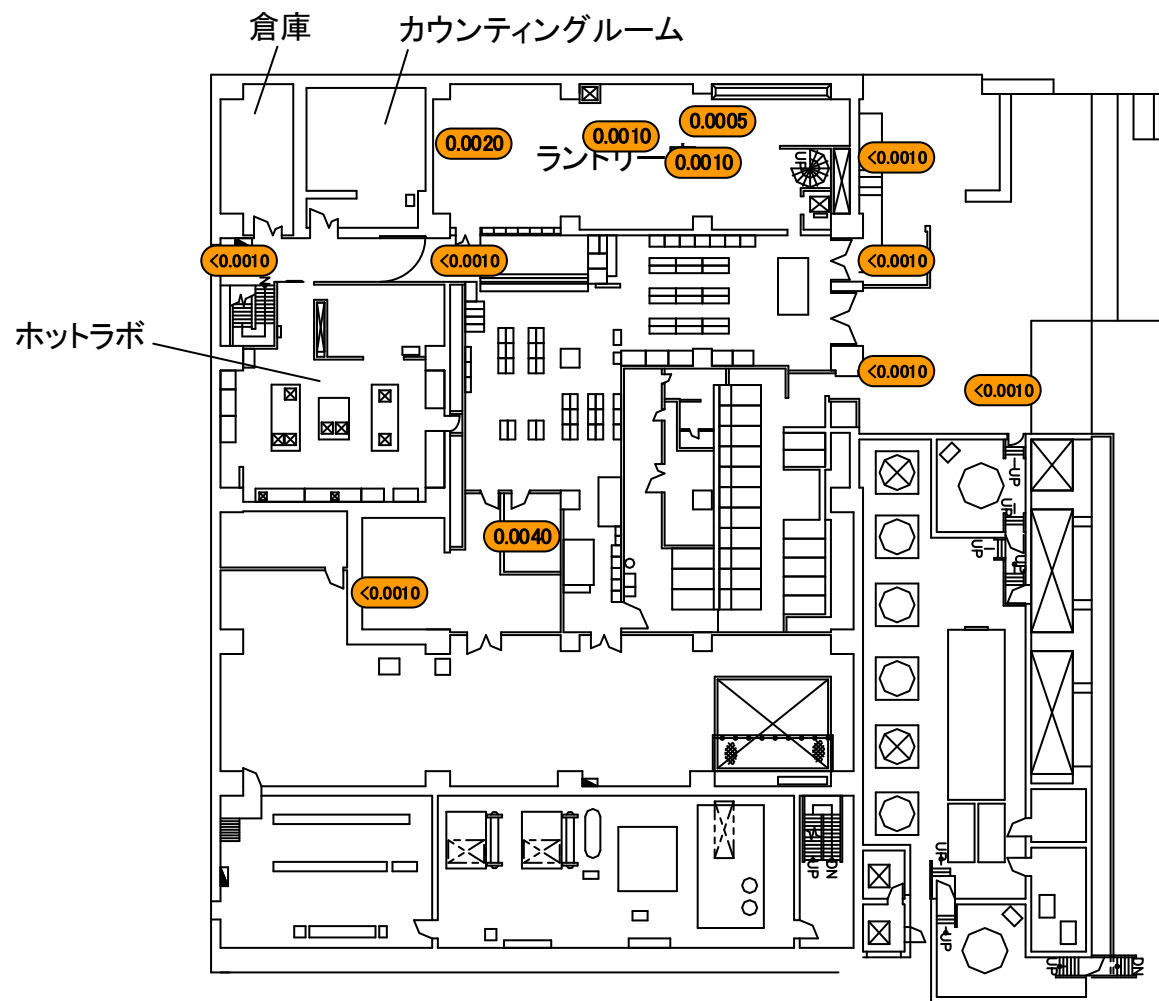
福島第一 原子力発電所

図面名称:

5号機 廃棄物処理建屋 3階

[単位: mSv/h]





福島第一 原子力発電所

図面名称:

5・6号機 サービス建屋 2階

[単位: mSv/h]

