

Completion of the Internal Investigation of the Unit 2 Spent Fuel Pool (SFP) at the Fukushima Daiichi Nuclear Power Station

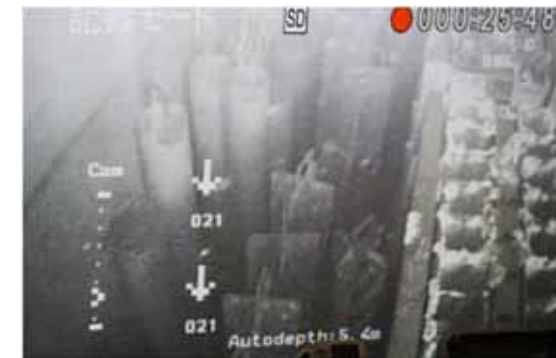
- In continuation from the previous day, the internal investigation of the Unit 2 spent fuel pool (SFP) recommenced at 9:38 AM on June 11.
- We checked for the following using a remotely operated vehicle.
 - ① Fallen control rods and control rod hanger deformation
 - ② Obstructions at the bottom of the cask pit, deformation of cask pit beams and the condition of bolts
- In regards to ①, we confirmed that the control rods are hanging on control rod hangers as normal. In regards to ②, sandy deposits were found at the bottom of the cask pit. However, no large obstructions, nor damage to the beams or bolts, were found.
- During today's portion of the investigation we did not encounter any circumstances that have the potential to interfere with fuel removal.
- In addition, we also checked the condition of channel boxes that have been stored in the SFP since before the disaster, and filters from regular inspections, but have not encountered any circumstances that have the potential to interfere with fuel removal.
- The investigation went smoothly and we were able to take videos/photographs of all the areas slated for visual inspection in accordance with the investigation plan, which enabled us to complete the investigation ahead of schedule. The video/photographs taken shall be closely examined and the results from this investigation shall be reflected in the design of fuel handling machines and other equipment as we aim to commence fuel removal from the Unit 2 SFP between FY2024 and FY2026.



【Control rods and control rod hangers】



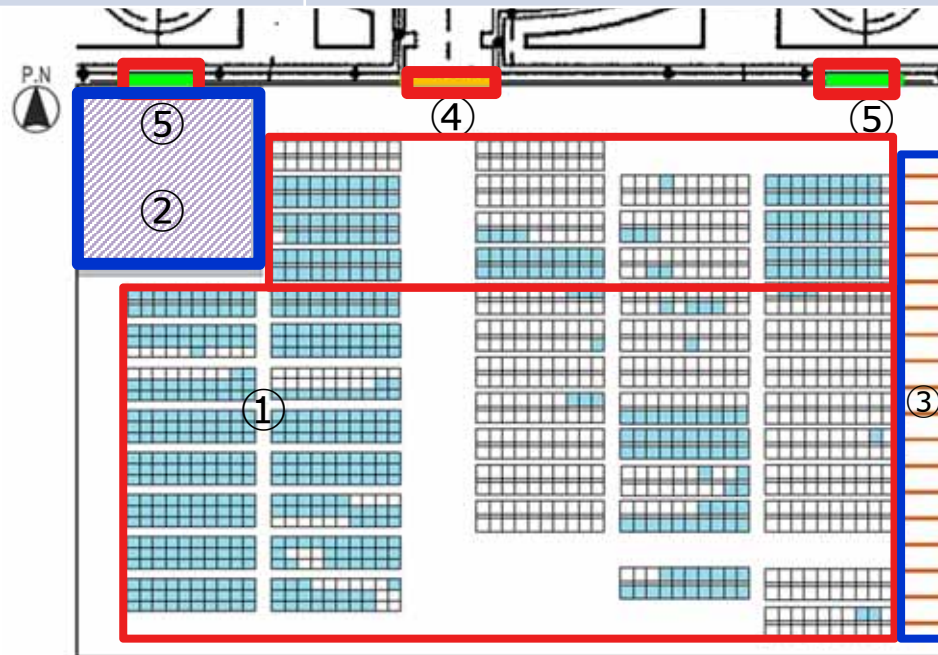
【Bottom of the cask pit】



【Control rod racks and filters】

<Reference> SFP investigation focus

Investigation targets	Investigation focus
① Fuel, and area above the fuel rack	<ul style="list-style-type: none"> Check for fuel deformation and obstructions in the area above the fuel rack
② Cask pit	<ul style="list-style-type: none"> Check for obstructions at the bottom of the cask pit and the deformation of cask pit beams
③ Control rods	<ul style="list-style-type: none"> Check for fallen control rods and control rod hanger deformation
④ Pool gate	<ul style="list-style-type: none"> Check for deformation of the pool gate and the condition of the bolts that hold the pool gate
⑤ Skimmer surge tank inlet	<ul style="list-style-type: none"> Check for deformation of the movable weir inlet and confirm that locking bolts have not come off



Location of investigation targets in the SFP

< Targets of the investigation >

■ : ① Fuel, fuel rack
(□ : Indicates racks without fuel)

▨ : ② Cask pit

≡ : ③ Control rods, control rod hanger

■ : ④ Pool gate

■ : ⑤ Skimmer surge tank inlet

□ : Investigated on June 10

□ : Investigated on June 11