

# ALPS Treated Water Discharge Status Update

July 2, 2026

---



Tokyo Electric Power Company Holdings, Inc.

## 1. Performance of the discharge of ALPS treated water

(Management number\* : 26-2-20)

## 2. Transfer of ALPS treated water in preparation for the future discharges

**[Reference 1] Management structure in light of new executive appointments**

**(June 25, 2026)**

**[Reference 2] Sea area monitoring history after the commencement of discharge**

\* The management number is made up of the fiscal year, followed by the discharge number for that fiscal year, and the total number of discharges to date.  
For example, "26-2-20" indicates that the data is for the second discharge of 2026, which is the twentieth discharge to date.

## 1. Performance of the discharge of ALPS treated water

**(Management number\* : 26-2-20)**

## 2. Transfer of ALPS treated water in preparation for the future discharges

[Reference 1] Management structure in light of new executive appointments

(June 25, 2026)

[Reference 2] Sea area monitoring history after the commencement of discharge

\* The management number is made up of the fiscal year, followed by the discharge number for that fiscal year, and the total number of discharges to date.  
For example, "26-2-20" indicates that the data is for the second discharge of 2026, which is the twentieth discharge to date.

# Overview

- We conducted the discharge of ALPS treated water (management number: 26-2-20) as follows.
- On the next page, we will explain that there was no abnormality in parameters and sea area monitoring.

## FY2026

Management number	Tank group	Tritium Concentration	Commenced	Completed	Amount of discharge	Amount of tritium radioactivity
26-1-19	Group A	24 x 10 <sup>4</sup> Bq/liter	April 2, 2026	April 20, 2026	7,865m <sup>3</sup>	Approx. 1.9 T Bq
26-2-20	Group B	17 x 10 <sup>4</sup> Bq/liter	June 1, 2026	June 20, 2026	7,927m <sup>3</sup>	Approx. 1.3 T Bq

# 1-1. Outline of the Nineteenth discharge of ALPS treated water into the sea (Management number: 26-2-20)

## Outline of discharge for group K4-B

Attributes of the treated water	Concentration of the 29 types of radionuclides (excluding tritium) in scope of measurement/evaluation	Within regulatory requirements (the sum of the ratios of legally required concentrations of radioactive substances is less than 1) (sum of the ratios of concentration: 0.45) (details on p1 of the link)	
	Tritium concentration	17 x 10 <sup>4</sup> Bq/L (details on p2 of the link)	
	Concentration of the 39 significant types of radionuclides measured voluntarily	No significant radionuclides identified (details on p3 of the link)	
	Status of water quality assessment	Within government and prefectural requirements (details on p4 of the link)	
	Water temperature	Same as outdoor temperature. After diluted to 740 times (design dilution factor ), same as sea water temperature (not the same as plant's thermal discharge)	
Actual volume of treated water discharge	7,927m <sup>3</sup>		
Treated water flow rate	Approximately 460m <sup>3</sup> /day (set not to exceed designed maximum on 500m <sup>3</sup> /day)		
Dilution sea water flow rate	Approximately 340,000m <sup>3</sup> /day (same speed as walking in the tunnel [approximated 1m/second])		
Actual amount of tritium radioactivity	Approximately 1.3 T Bq		
Actual concentration of tritium after dilution	175-217 Bq/L		
Actual term of discharge	June 1, 2026 to June 20, 2026		

## 1-2. Analysis results of ALPS treated water in the measurement/confirmation tanks (Management number: 26-2-20)

- Pre-discharge analysis results for the samples taken from the measurement/confirmation tank (Group B) on April 20, 2026, were obtained. It was confirmed that the water satisfies discharge requirements (Table 1. Disclosed on May 28, 2026).
  - Item 1: For 29 nuclides to be measured and assessed, the sum of the ratios of the concentration of each radionuclide to the regulatory concentration is 0.45, and it is confirmed to be less than 1.
  - Item 2: Analysis results of tritium concentration is 17 x 10<sup>4</sup> Bq/L, and it is confirmed to be less than 1 million Bq/L.
  - Item 1/2: The external agency consigned by TEPCO (Kaken) and the third-party consigned by the Japanese Government (JAEA)\*<sup>1</sup> obtained the same results from their analyses.
  - Item 3/4: It was confirmed that operational targets have been satisfied. \*1 ALPS treated water third-party analysis  
([https://fukushima.jaea.go.jp/okuma/alps/index\\_e.html](https://fukushima.jaea.go.jp/okuma/alps/index_e.html))

Table 1. Pre-discharge analysis results of water in the measurement/confirmation tank (Management number: 26-2-20)

Items		Requirement basis	Operational Target	Analysis Results
①	Nuclide to be measured and assessed (29 nuclides)	Implementation plan	The sum of the ratios of the concentration of each radionuclide to the regulatory concentration, except for tritium, is less than 1	<b>0.45 ( &lt; 1 )</b>
②	Tritium		Tritium concentration is less than 1 million Bq/L	<b>17 x 10<sup>4</sup>Bq/liter (less than 1 million Bq/L)</b>
③	Nuclides voluntarily checked to ensure* <sup>2</sup> that they are not significantly present (39 nuclides)	Voluntary	No significant concentrations were found of any of the nuclides* <sup>2</sup>	<b>None of the nuclides are present in significant concentration</b>
④	General water quality: 44 criteria		Pre-check of water quality standards* <sup>3</sup>	<b>All criteria satisfied</b>

\*2 It was confirmed that the concentration was below the detection limit or less than 1/100 of the notification concentration limit as a result of evaluation by radiological equilibrium, etc.

\*3 Diluted ALPS treated water sampled from the discharge vertical shaft (upper-stream storage) once a year to confirm that legal requirements are being satisfied. For the ALPS treated water prior to dilution (tank water for measurement/confirmation), it was voluntarily confirmed to meet the standard values.

# [Reference] Pre-discharge analysis results of ALPS treated water in the measurement/confirmation (Management number: 26-2-20) (1/4)



- For 29 nuclides to be measured and assessed, the sum of the ratios of the concentration of each radionuclide to the regulatory concentration is 0.45, and it is confirmed to be less than 1.

Pre-discharge Analysis Results of ALPS Treated Water in the Measurement/Confirmation Tanks (1/4)

Sample Name	ALPS Treated Water in the Measurement/Confirmation Tanks		Group B		Summary	Nuclides to be measured and assessed (29 nuclides) : The sum of the ratios of the concentration of each radionuclide to the regulatory concentration		0.45 (Confirmed to be less than 1)
Date and Time of Sampling	April 20, 2026	10:20						
Storage Volume (m <sup>3</sup> )	8960							

No.	Nuclide	Analysis Results						Ratios to Regulatory Concentration Limit		Regulatory Concentration Limit *2 (Bq/L)	Analysis Method *4
		Analysis Value (Bq/L)	TEPCO Uncertainty *1 (Bq/L)	Detection Limit (Bq/L)	Analysis Value (Bq/L)	KAKEN Co.,Ltd. Uncertainty *1 (Bq/L)	Detection Limit (Bq/L)	TEPCO	KAKEN Co.,Ltd.		
1	C-14	1.4E+01	± 1.9E+00	1.6E+00	1.3E+01	± 1.2E+00	9.8E-01	7.0E-03	6.6E-03	2000	Measurement
2	Mn-54	ND	—	2.6E-02	ND	—	1.8E-02	less than 2.6E-05	less than 1.8E-05	1000	Measurement
3	Fe-55	ND	—	1.2E+01	ND	—	1.1E+01	less than 5.9E-03	less than 5.7E-03	2000	Measurement
4	Co-60	2.5E-01	± 4.9E-02	2.6E-02	2.5E-01	± 3.6E-02	2.0E-02	1.2E-03	1.2E-03	200	Measurement
5	Ni-63	ND	—	8.5E+00	ND	—	5.5E+00	less than 1.4E-03	less than 9.1E-04	6000	Measurement
6	Se-79	ND	—	8.3E-01	ND	—	1.5E+00	less than 4.2E-03	less than 7.4E-03	200	Measurement
7	Sr-90	4.5E-01	± 2.4E-02	3.5E-02	4.3E-01	± 5.7E-02	3.0E-02	1.5E-02	1.4E-02	30	Measurement
8	Y-90	4.5E-01	—	3.5E-02	4.3E-01	—	3.0E-02	1.5E-03	1.4E-03	300	50-90/Y-90 Radioactive Equilibrium Assessment
9	Tc-99	9.5E+00	± 4.6E-01	4.4E-01	9.5E+00	± 7.4E-01	1.6E-01	9.5E-03	9.5E-03	1000	Measurement
10	Ru-106	ND	—	2.2E-01	ND	—	1.9E-01	less than 2.2E-03	less than 1.9E-03	100	Measurement
11	Cd-113m	ND	—	9.4E-02	ND	—	6.0E-02	less than 2.3E-03	less than 1.5E-03	40	Measurement
12	Sb-125	ND	—	8.8E-02	8.9E-02	± 5.1E-02	7.5E-02	less than 1.1E-04	1.1E-04	800	Measurement
13	Te-125m	ND	—	3.3E-02	3.3E-02	—	2.8E-02	less than 3.6E-05	3.7E-05	900	50-125/Te-125m Radioactive Equilibrium Assessment
14	I-129	3.5E+00	± 1.7E-01	2.4E-02	3.8E+00	± 3.9E-01	6.5E-02	3.9E-01	4.2E-01	9	Measurement
15	Cs-134	ND	—	3.7E-02	ND	—	2.3E-02	less than 6.2E-04	less than 3.8E-04	60	Measurement
16	Cs-137	4.7E-01	± 8.4E-02	3.0E-02	4.7E-01	± 6.7E-02	2.2E-02	5.2E-03	5.8E-03	90	Measurement
17	Pm-147	ND	—	3.0E-01	ND	—	2.5E-01	less than 9.9E-05	less than 8.3E-05	3000	Eu-154 Relative Ratio Assessment
18	Sm-151	ND	—	1.1E-02	ND	—	9.6E-03	less than 1.4E-06	less than 1.2E-06	8000	Eu-154 Relative Ratio Assessment
19	Eu-154	ND	—	6.7E-02	ND	—	5.6E-02	less than 1.7E-04	less than 1.4E-04	400	Measurement
20	Eu-155	ND	—	2.2E-01	ND	—	2.2E-01	less than 7.4E-05	less than 7.2E-05	3000	Measurement
21	U-234								20	Gross Alpha	
22	U-238								20	Gross Alpha	
23	Np-237								9	Gross Alpha	
24	Pu-238	ND	—	2.4E-02	ND	—	2.4E-02	less than 6.1E-03	less than 5.9E-03	4	Gross Alpha
25	Pu-239								4	Gross Alpha	
26	Pu-240								4	Gross Alpha	
27	Am-241								5	Gross Alpha	
28	Cm-244								7	Gross Alpha	
29	Pu-241	ND	—	6.6E-01	ND	—	6.5E-01	less than 3.3E-03	less than 3.2E-03	200	Pu-238 Relative Ratio Assessment
								less than 4.5E-01	less than 4.9E-01		

\* The sum of the ratios of the concentration of each radionuclide to the regulatory concentration (sum of the ratios to regulatory concentration limit)  
 \* ND indicates that analysis result is less than the detection limit.  
 \* Values are expressed in exponential notation.  
 For example, "3.1E+01" means "3.1×10<sup>1</sup>" and equals 31. Similarly, "3.1E+00" means "3.1×10<sup>0</sup>" and equals 3.1, and "3.1E-01" means "3.1×10<sup>-1</sup>" and equals 0.31.  
 \*1 "Uncertainty" refers to the accuracy of analysis data.  
 "Uncertainty" is calculated using "Expanded Uncertainty: Coverage Factor k=2".  
 \*2 Regulatory concentration limits stipulated in the Regulations of the Safety and Physical Protection of Specific Nuclear Fuel Material at Fukushima Daiichi Nuclear Power Station of the Tokyo Electric Power Company, Incorporated. (Attached Chart 1, Row 6: Concentration limits in the water outside of the environmental monitoring area [in this chart Bq/cm<sup>3</sup> has been converted into Bq/L])  
 \*3 The ratio to regulatory concentration limit for alpha-radionuclides has been assessed using the lowest regulatory concentration limit for all the target nuclides.  
 \*4 Analysis methods are as follows:  
 Measurement - The concentrations of each radionuclide have been calculated by directly measuring/analyzing radioactivity intensity and the quantity of the element.  
 Gross Alpha - The total amount of alpha-radionuclides in the specimen are calculated by directly measuring alpha rays.  
 Radioactive Equilibrium Assessment - Calculated using a physical phenomenon in which the amount of radioactivity of one radionuclide and another radionuclide produced by the decay of that radionuclide exist in a certain ratio.  
 Relative Ratio Assessment - Calculated based on the assessment values of radionuclides that existed inside the reactor while considering radionuclide decay and migration into ALPS treated water.

Nuclides to be measured and assessed (29 nuclides)

Analysis results of radioactivity (Bq/L)

Ratios to Regulatory Concentration Limit

[Reference] Pre-discharge analysis results of ALPS treated water in the measurement/confirmation (Management number: 26-2-20) (2/4)

- Analysis results of tritium concentration is  $17 \times 10^4$  Bq/liter.

Tritium Concentration (Bq/L)

Pre-discharge Analysis Results of ALPS Treated Water in the Measurement/Confirmation Tanks (2/4)

Summary	$17 \times 10^4$ Bq/L (confirmed to be less than 1 million Bq/L)
---------	--

Radioactivity Analysis: Tritium

No.	Nuclide	Analysis Results						Analysis Objective	Analysis Method *3
		TEPCO			KAKEN Co.,Ltd.				
		Analysis Value (Bq/L)	Uncertainty *1 (Bq/L)	Detection Limit (Bq/L)	Analysis Value (Bq/L)	Uncertainty *1 (Bq/L)	Detection Limit (Bq/L)		
1	H-3	1.7E+05	$\pm 1.2E+04$	1.8E+01	1.6E+05	$\pm 1.2E+04$	1.9E+01	*2	Measurement

\* Values are expressed in exponential notation.

For example, "3.1E+01" means "3.1x10<sup>1</sup>" and equals 31. Similarly, "3.1E+00" means "3.1x10<sup>0</sup>" and equals 3.1, and "3.1E-01" means "3.1x10<sup>-1</sup>" and equals 0.31.

\*1 "Uncertainty" refers to the accuracy of analysis data.

"Uncertainty" is calculated using "Expanded Uncertainty: Coverage Factor k=2".

\*2 To confirm that the tritium concentration is less than 1E+06Bq/liter (less than 1 million Bq/liter), the maximum concentration stipulated in the implementation plan, ensuring that the tritium concentration after dilution is less than 1,500 Bq/liter.

\*3 Analysis method is as follows:

Measurement - The concentration of radionuclide has been calculated by directly measuring/analyzing radioactivity intensity and the quantity of the element.

<Excerpt from Treated Water Portal Site>

# [Reference] Pre-discharge analysis results of ALPS treated water in the measurement/confirmation (Management number: 26-2-20) (3/4)



- We voluntarily checked that the nuclides (39 nuclides) are not significantly present. We confirmed that all the 39 nuclides are not significantly present.

Pre-discharge Analysis Results of ALPS Treated Water in the Measurement/Confirmation Tanks (3/4)

Summary: No significant concentrations found of any of the nuclides

Radioactivity Analysis: Nuclides voluntarily checked to ensure that they are not significantly present (39 nuclides)

No.	Nuclide	TEPCO		KAKEN Co.,Ltd.		Confirmation Method *2
		Assessment *1	Detection Limit (Bq/L)	Assessment *1	Detection Limit (Bq/L)	
1	Fe-59	○	4.6E-02	○	4.2E-02	Measurement
2	Co-58	○	2.5E-02	○	1.8E-02	
3	Zn-65	○	4.5E-02	○	3.8E-02	
4	Rb-86	○	2.8E-01	○	2.3E-01	
5	Sr-89	○	4.4E-02	○	4.2E-02	
6	Y-91	○	2.7E+00	○	2.1E+00	
7	Nb-95	○	3.0E-02	○	2.7E-02	
8	Ru-103	○	2.9E-02	○	2.3E-02	
9	Ag-110m	○	2.4E-02	○	2.0E-02	
10	Cd-115m	○	1.3E+00	○	1.0E+00	
11	Sn-123	○	1.1E+00	○	8.9E-01	
12	Sn-126	○	7.7E-01	○	1.1E-01	
13	Sb-124	○	5.5E-01	○	4.2E-02	
14	Te-123m	○	4.0E-02	○	4.0E-02	
15	Te-127	○	7.0E-01	○	6.1E-01	
16	Te-129m	○	7.3E-01	○	6.3E-01	
17	Te-129	○	3.3E-01	○	3.2E-01	
18	Cs-136	○	2.2E-02	○	2.2E-02	
19	Ba-140	○	1.1E-01	○	1.1E-01	
20	Ce-141	○	9.9E-02	○	7.5E-02	
21	Ce-144	○	3.1E-01	○	2.7E-01	
22	Pm-146	○	5.1E-02	○	5.5E-02	
23	Pm-148m	○	2.7E-02	○	2.2E-02	
24	Pm-148	○	1.1E-01	○	8.3E-02	
25	Eu-152	○	1.1E-01	○	9.0E-02	
26	Gd-153	○	1.3E-01	○	1.2E-01	
27	Tb-160	○	7.6E-02	○	7.1E-02	
28	Am-243	○	2.4E-02	○	2.4E-02	
29	Cm-242	○	2.4E-02	○	2.4E-02	
30	Cm-243	○	2.4E-02	○	2.4E-02	
31	Rh-103m	○	2.9E-02	○	2.3E-02	
32	Rh-106	○	2.2E-01	○	1.9E-01	
33	Sn-119m	○	6.3E-03	○	4.1E-03	
34	Te-127m	○	7.2E-01	○	6.2E-01	
35	Cs-135	○	2.0E-07	○	1.5E-07	
36	Ba-137m	○	2.9E-02	○	2.1E-02	
37	Pr-144m	○	4.7E-03	○	4.1E-03	
38	Pr-144	○	3.1E-01	○	2.7E-01	
39	Am-242m	○	1.7E-04	○	1.6E-04	

\*1 "○" indicates that the absence of significant concentrations was confirmed by the following, and "×" indicates that significant concentrations of nuclide was confirmed.

- Concentration of nuclide measured was below detection limit
- For nuclide that has been assessed using radioactive equilibrium, etc., if its target nuclide is detected and the assessment value of the target nuclide is extremely small compared to the regulatory concentration limit, or in other words, if it is less than 1/100 of the regulatory concentration limit which is the value set as the detection limit, then it shall be deemed to be below the detection limit.

Nuclide	Assessment Values (Bq/L)		Regulatory Concentration Limit
	TEPCO	KAKEN Co.,Ltd.	
Rh-103m	—	—	2.0E+05
Rh-106	—	—	3.0E+05
Sn-119m	—	—	2.0E+03
Te-127m	—	—	3.0E+02
Cs-135	3.1E-06	3.4E-06	6.0E+02
Ba-137m	4.5E-01	4.9E-01	8.0E+05
Pr-144m	—	—	4.0E+04
Pr-144	—	—	2.0E+04
Am-242m	—	—	5.0E+00

\*2 Analysis Methods are as follows:  
 Measurement - The concentrations of each radionuclide have been calculated by directly measuring/analyzing radioactivity intensity and the quantity of the element.  
 Measurement (substituted with gross alpha) - The total amount of alpha-radionuclides in the specimen are calculated by directly measuring alpha rays.  
 Radioactive Equilibrium Assessment - Calculated using a physical phenomenon in which the amount of radioactivity of one radionuclide and another radionuclide produced by the decay of that radionuclide exist in a certain ratio.  
 Relative Ratio Assessment - Calculated based on the assessment values of radionuclides that existed inside the reactor while considering radionuclide decay and migration into ALPS treated water.

\*3 Regulatory concentration limits stipulated in the Regulations of the Safety and Physical Protection of Specific Nuclear Fuel Material at Fukushima Daiichi Nuclear Power Station of the Tokyo Electric Power Company, Incorporated.  
 (Attached Chart 1, Row 6: Concentration limits in the water outside of the environmental monitoring area [in this chart Bq/cm<sup>3</sup> has been converted into Bq/L])

<Excerpt from Treated Water Portal Site>

Nuclides voluntarily checked to ensure that they are not significantly present (39 nuclides)

Assessment results  
 ○ : absence of significant concentration was confirmed  
 × : significant concentration was confirmed

# [Reference] Pre-discharge analysis results of ALPS treated water in the measurement/confirmation (Management number: 26-2-20) (4/4)



- For 44 general water quality measurement items (voluntary check to confirm that there are no unusual water quality), **it is confirmed that all criteria<sup>※</sup> satisfied.**

※ In accordance with Fukushima Prefecture's "Ordinance on Discharge Standards Based on the Air Pollution Control Act and Wastewater Standard based on the Water Pollution Prevention Act (attached Chart 2)", and "the Ordinance Enforcement Regulations Pertaining to the Preservation of the Living Environment in Fukushima (attached Chart 5)".

General water quality measurement items (44 criteria)

Analysis results

Pre-discharge Analysis Results of ALPS Treated Water in the Measurement/Confirmation (4/4)

Summary | Criteria satisfied

General Water Quality Analysis: Voluntary check to confirm that there are no unusual water quality (44 criteria)

No.	Measurement Items	Unit	Analysis Result	Criteria *1
1	Hydrogen Ions (pH)	-	8.7	Sea Area 5.0~9.0
2	Suspended Solids (SS)	mg/L	<1	Maximum: 70 or less Average: 50 or less
3	Chemical Oxygen Demand (COD)	mg/L	0.8	Maximum: 40 or less Average: 30 or less
4	Boron	mg/L	0.6	Sea Area 230 or less
5	Soluble Iron	mg/L	<1	10 or less
6	Copper	mg/L	<0.1	2 or less
7	Nickel	mg/L	<0.1	2 or less
8	Chrome	mg/L	<0.1	2 or less
9	Zinc	mg/L	<0.1	2 or less
10	Biochemical Oxygen Demand (BOD)	mg/L	2	Maximum: 40 or less Average: 30 or less
11	Escherichia coli	CFU/mL	0	800 or less
12	Cadmium	mg/L	<0.01	0.03 or less
13	Cyanide	mg/L	<0.05	0.5 or less
14	Organic Phosphorus	mg/L	<0.1	1 or less
15	Lead	mg/L	<0.01	0.1 or less
16	Hexavalent Chromium	mg/L	<0.05	0.2 or less
17	Arsenic	mg/L	<0.01	0.1 or less
18	Mercury	mg/L	<0.0005	0.005 or less
19	Alkyl Mercury	mg/L	<0.0005	Not Detected *2
20	Polychlorinated Biphenyl	mg/L	<0.0005	0.003 or less
21	Trichlorethylene	mg/L	<0.03	0.1 or less
22	Tetrachloroethylene	mg/L	<0.01	0.1 or less
23	Dichloromethane	mg/L	<0.02	0.2 or less
24	Carbon Tetrachloride	mg/L	<0.002	0.02 or less

25	1,2-Dichloroethane	mg/L	<0.004	0.04 or less
26	1,1-Dichloroethylene	mg/L	<0.1	1 or less
27	Cis-1,2-Dichloroethylene	mg/L	<0.04	0.4 or less
28	1,1,1-Trichloroethane	mg/L	<0.3	3 or less
29	1,1,2-Trichloroethane	mg/L	<0.006	0.06 or less
30	1,3-Dichloropropene	mg/L	<0.002	0.02 or less
31	Thiuram	mg/L	<0.006	0.06 or less
32	Simazine	mg/L	<0.003	0.03 or less
33	Thiobencarb	mg/L	<0.02	0.2 or less
34	Benzene	mg/L	<0.01	0.1 or less
35	Selenium	mg/L	<0.01	0.1 or less
36	Fenitrothion	mg/L	<0.003	0.03 or less
37	Phenols	mg/L	<0.1	1 or less
38	Fluorine	mg/L	<0.5	Sea Area 10 or less
39	Soluble Manganese	mg/L	<1	10 or less
40	Ammonia, Ammonium Compounds	mg/L	<1	100 or less
41	Nitrite Compounds and Nitrate Compounds	mg/L	9	
42	1,4-Dioxane	mg/L	<0.05	0.5 or less
43	n-Hexane Extractables (Mineral Oils)	mg/L	<0.5	1 or less
44	n-Hexane Extractables (Animal and Vegetable Oils and Fats)	mg/L	<1	10 or less

\* A "less than" symbol (<) indicates that the quantity is below quantitation limit.

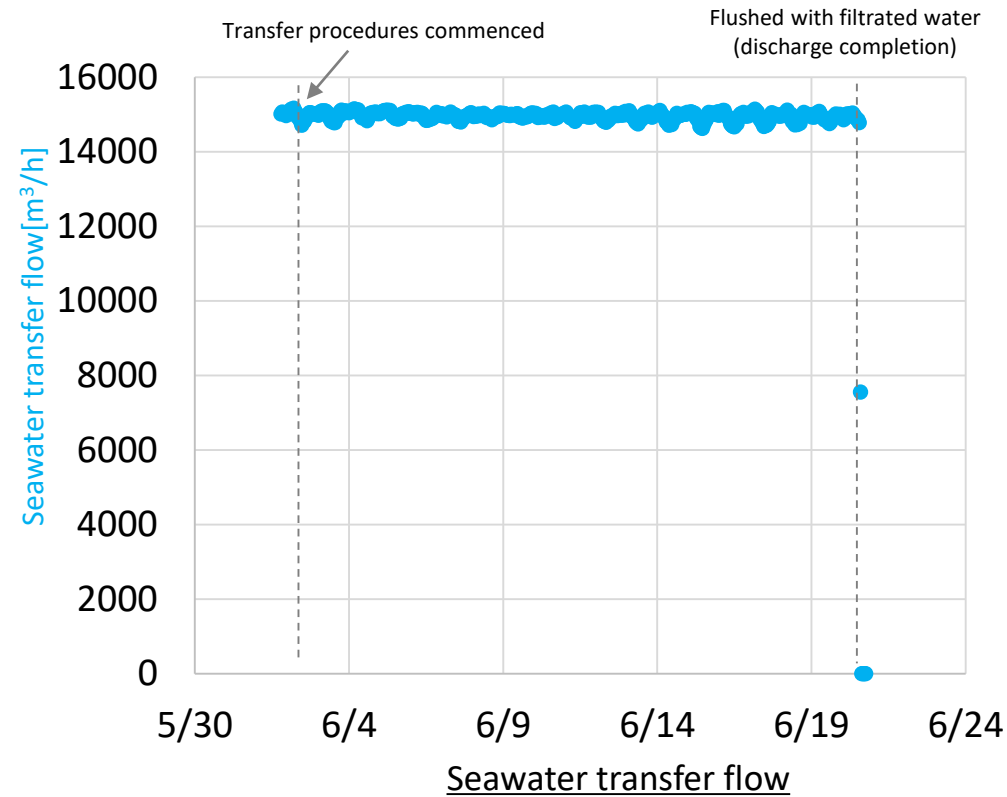
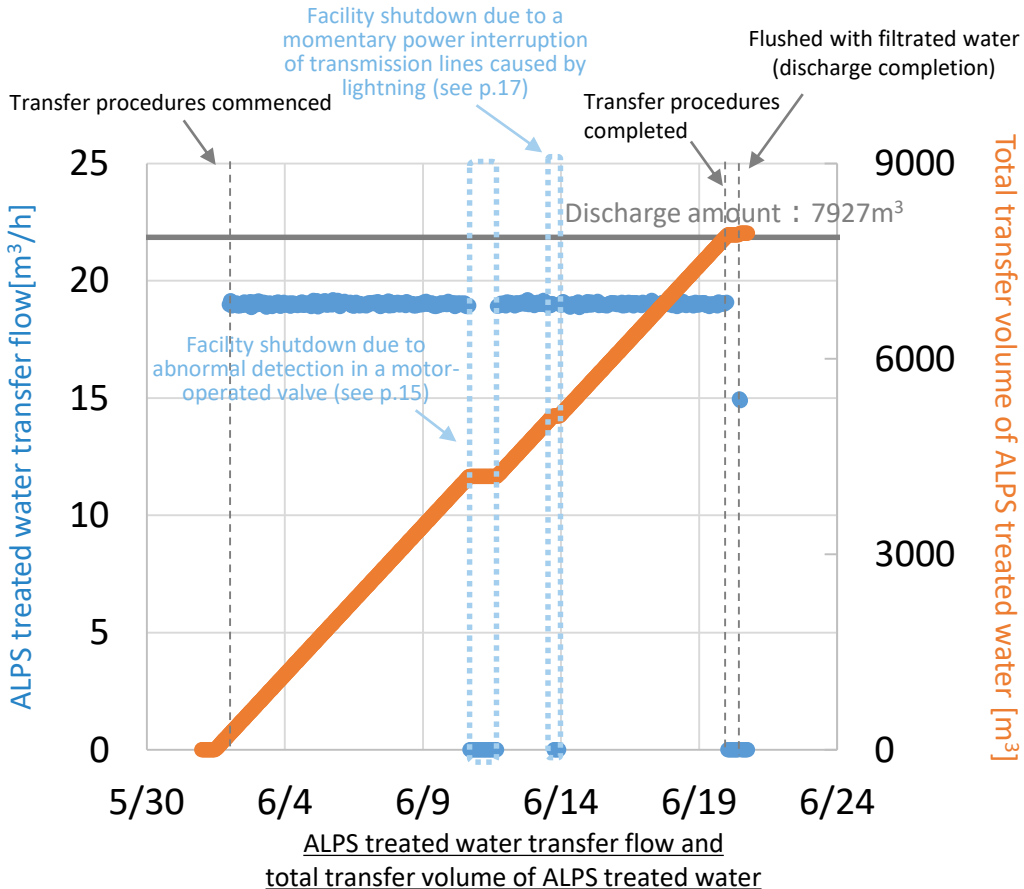
\*1 In accordance with Fukushima Prefecture's "Ordinance on Discharge Standards Based on the Air Pollution Control Act and Wastewater Standards based on the Water Pollution Prevention Act (attached Chart 2) [大気汚染防止法に基づき排出基準及び水質汚濁防止法に基づき排水基準を定める条例(別表第2)]", and "the Ordinance Enforcement Regulations Pertaining to the Preservation of the Living Environment in Fukushima (attached Chart 5) [福島県生活環境の保全等に関する条例施行規則(別表第5)]".

\*2 "Not Detected" indicates that, as described in "Ministerial Ordinance on Effluent standards (attached Table 1) [排水基準を定める省令(別表第一)]", when the state of water pollution is assessed in discharged water using the methods established by the Minister of the Environment, the result is below the limit of quantification (Alkyl Mercury: 0.0005 mg/liter) of the assessment method.

<Excerpt from Treated Water Portal Site>

# 1-3. Operating parameter records during the discharge (1/3)

■ We were able to operate ALPS treated water transfer systems and seawater systems without issue.



- ALPS treated water transfer flow\*<sup>1</sup>
- Total transfer volume of ALPS treated water

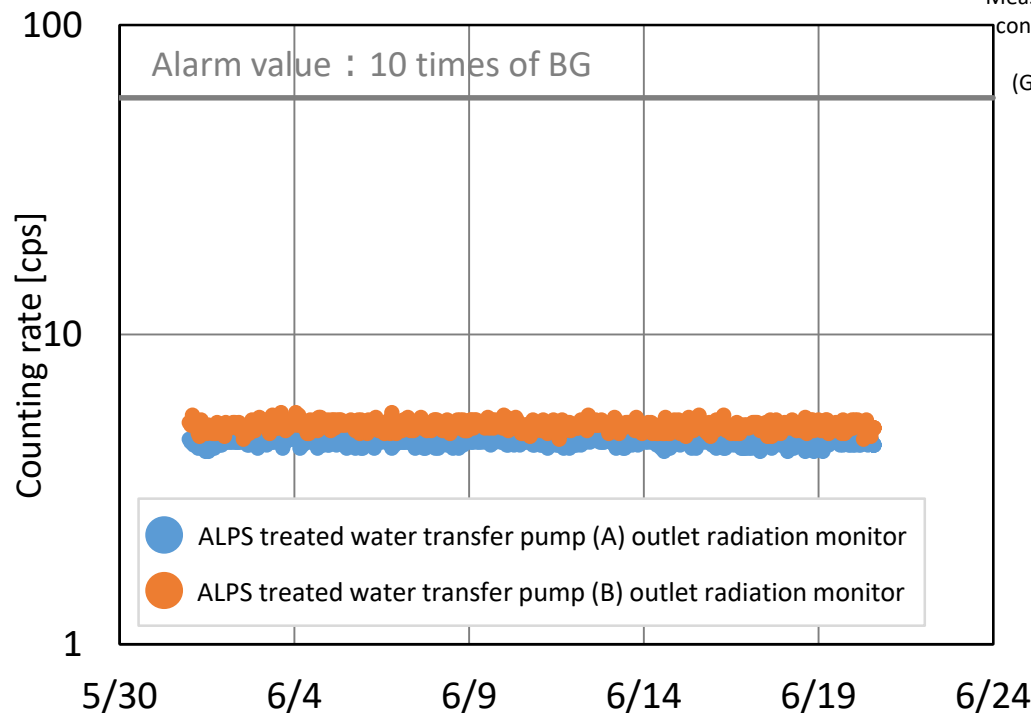
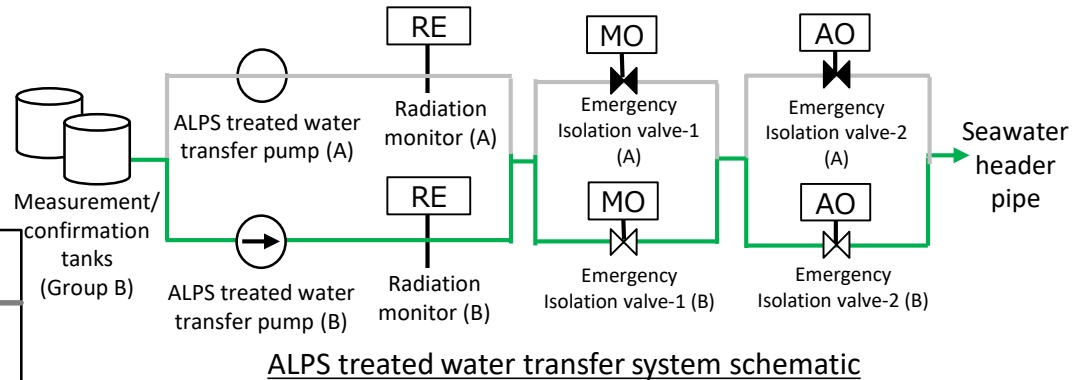
- Seawater transfer flow\*<sup>2</sup>

\*1 : The flowmeters are reduplicate, so the higher of the figures from both meters was used.

\*2 : Total for systems A and B

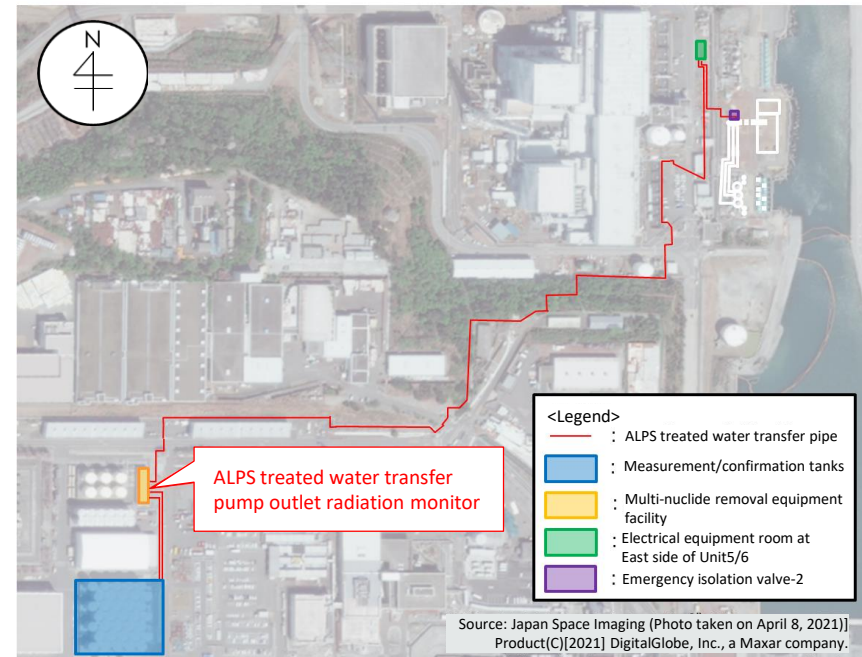
# 1-3. Operating parameter records during the discharge (2/3)

■ No abnormalities were seen in the figures from the ALPS treated water transfer pump outlet radiation monitor.



Figures of ALPS treated water transfer pump outlet radiation monitor※

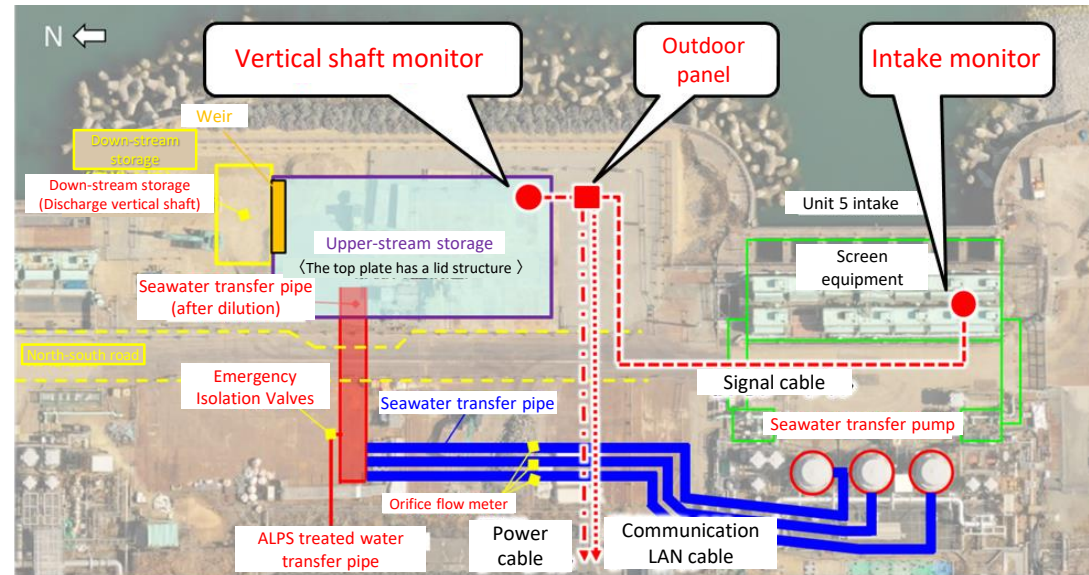
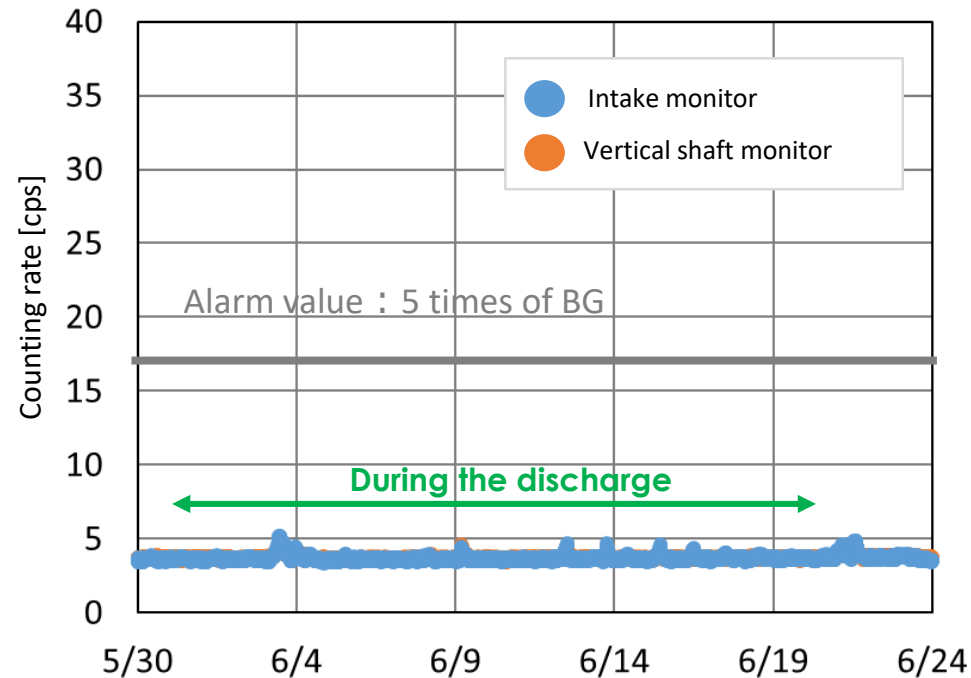
※ : As shown in the schematic on the upper right, ALPS treated water was passed through System B. (System A was filled with filtrated water)



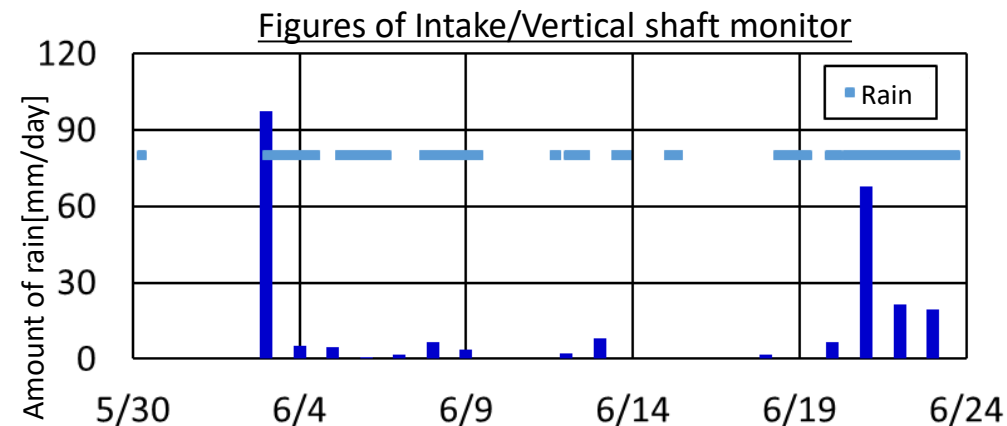
Overview of ALPS treated water dilution/discharge facility

# 1-3. Operating parameter records during the discharge (3/3)

- Temporary increase in values, possibly due to rain is observed at the intake monitor and the vertical shaft monitor, but no abnormalities are seen in the readings.



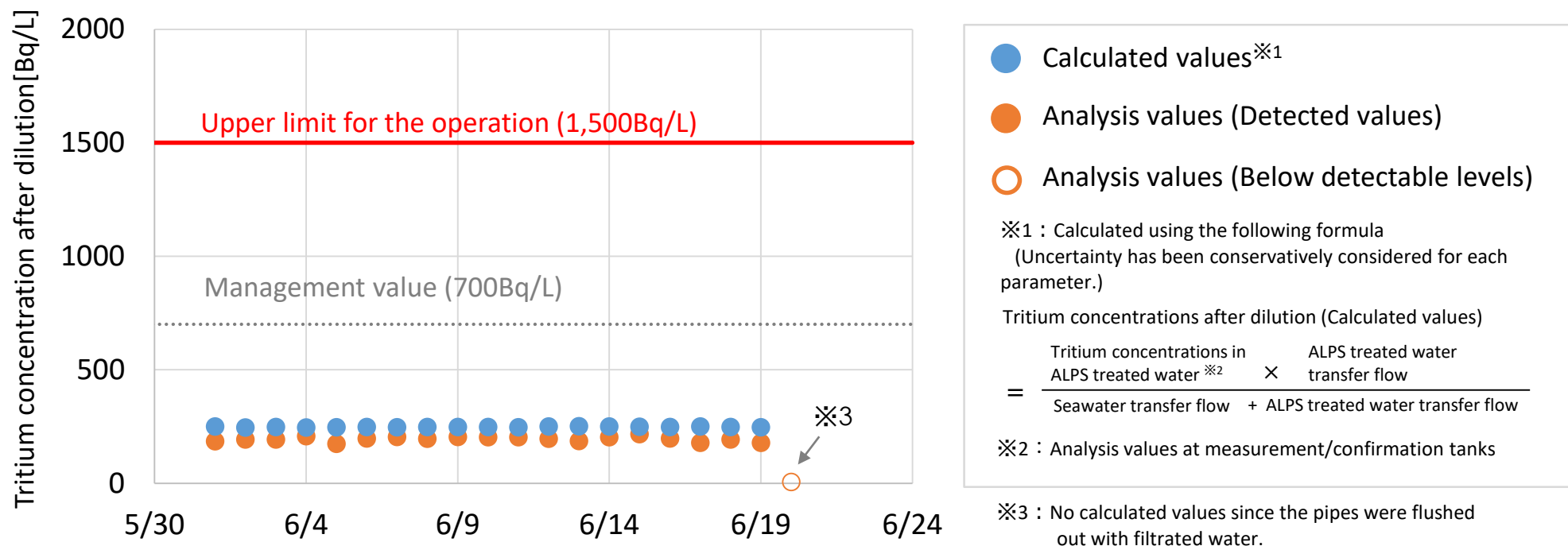
Overview of intake/vertical shaft monitor



※It is assumed that the temporary increases during rainfall were caused by the runoff of fallout from onshore areas and precipitation of natural radionuclides (such as daughter nuclide of radon, etc.).

# 1-4. Tritium concentrations after dilution during the discharge TEPCO

- During the discharge period, water was sampled daily from the seawater pipe to analyze tritium concentrations.  
⇒ Confirmed to be less than the upper limit for the operation: 1,500Bq/liter



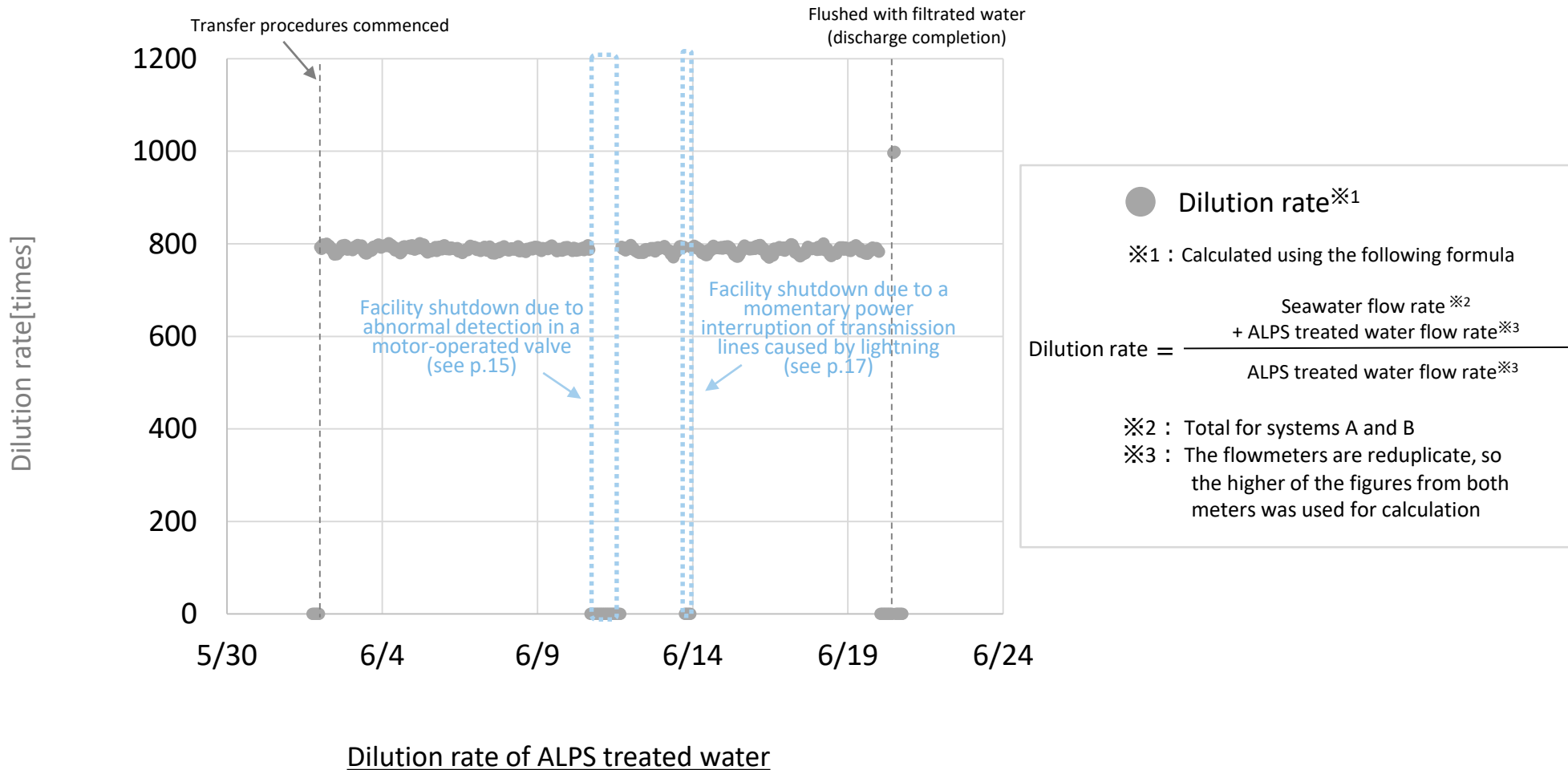
Tritium concentrations after dilution (calculated values and analysis values)

	6/1	6/2~6/10, 6/12~6/19	6/11 <sup>※4</sup>	6/20
Calculated value: Time of data acquisition	13:00	7:00	17:00	—
Analysis value: Time of specimen sampling	13:39	7:00~9:00	17:40	12:02

※4 : The time at which data were extracted/collected when the discharge was resumed after a temporary suspension due to abnormal detection in a motor-operated valve

# [Supplement] Dilution rate of ALPS treated water

- The dilution rate had always been kept at over 100 times during the discharge.



## 1-5. Information on the event resulting in the automatic suspension of the discharge of ALPS treated water into the sea (1/2)

### ■ June 10, 2026

- 4:17 p.m. : An open/close abnormality signal came from a primary discharge valve (MO-F251B) in measurement/confirmation tank Group B within the ALPS treated water discharge and discharge facilities thereby resulting in the automatic suspension of discharge<sup>※</sup>. The open/close abnormality signal was generated when the signal indicating “Full open” sent from the aforementioned valve to the control system in response to an “open” command signal sent to the valve from the control system got cut off.
- 4:24 p.m. : It was confirmed in the field that there are no abnormalities with the shutdown status of the facility since the aforementioned valve is fully closed (no leaks from the system)

### ■ June 11, 2026

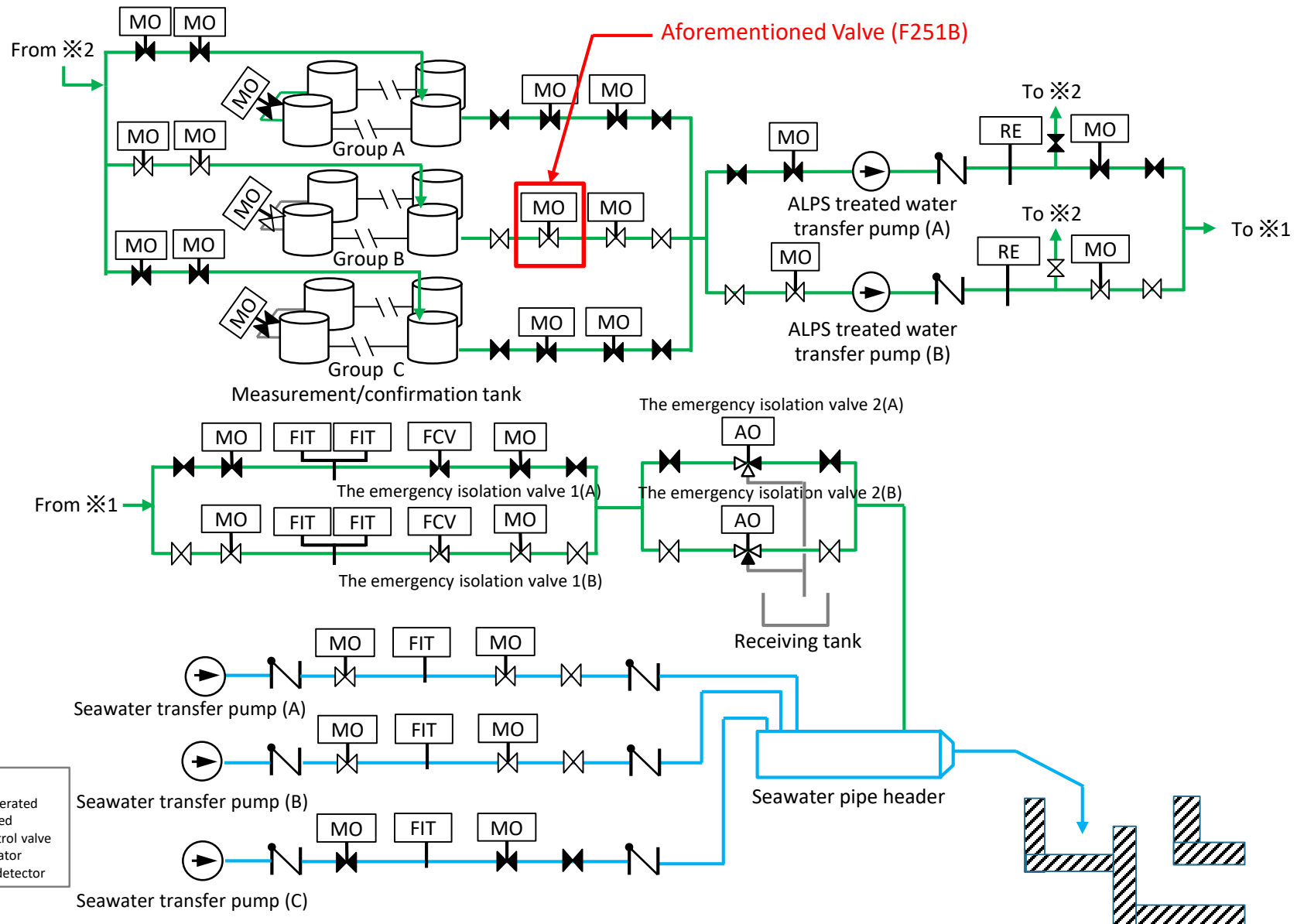
- 4:10 p.m. : Discharge recommenced after the aforementioned valve was replaced with a spare

※: This suspension of discharge does not constitute an “emergency shutdown” (emergency isolation valves 1 and 2 would close first in this case) meant to prevent unintentional discharges of ALPS treated water into the sea, but rather a “normal” shutdown (Emergency isolation valve 1 is closed after closure of the FCV and shutdown of the pump) caused by the detection of an equipment abnormality

### 【Presumed cause】

- Since we have confirmed that no abnormal signals were sent from the control system in the seismically isolated building to the aforementioned valve, it is assumed that there is an abnormality with the motor of the aforementioned valve.
- The event could not be recreated when checking the operation of the aforementioned valve, and no abnormalities were detected during past regular inspections.

# [Supplement] Valve from which an open/close abnormality signal was sent on June 10 **TEPCO**



ALPS Treated water dilution and discharge facility system diagram

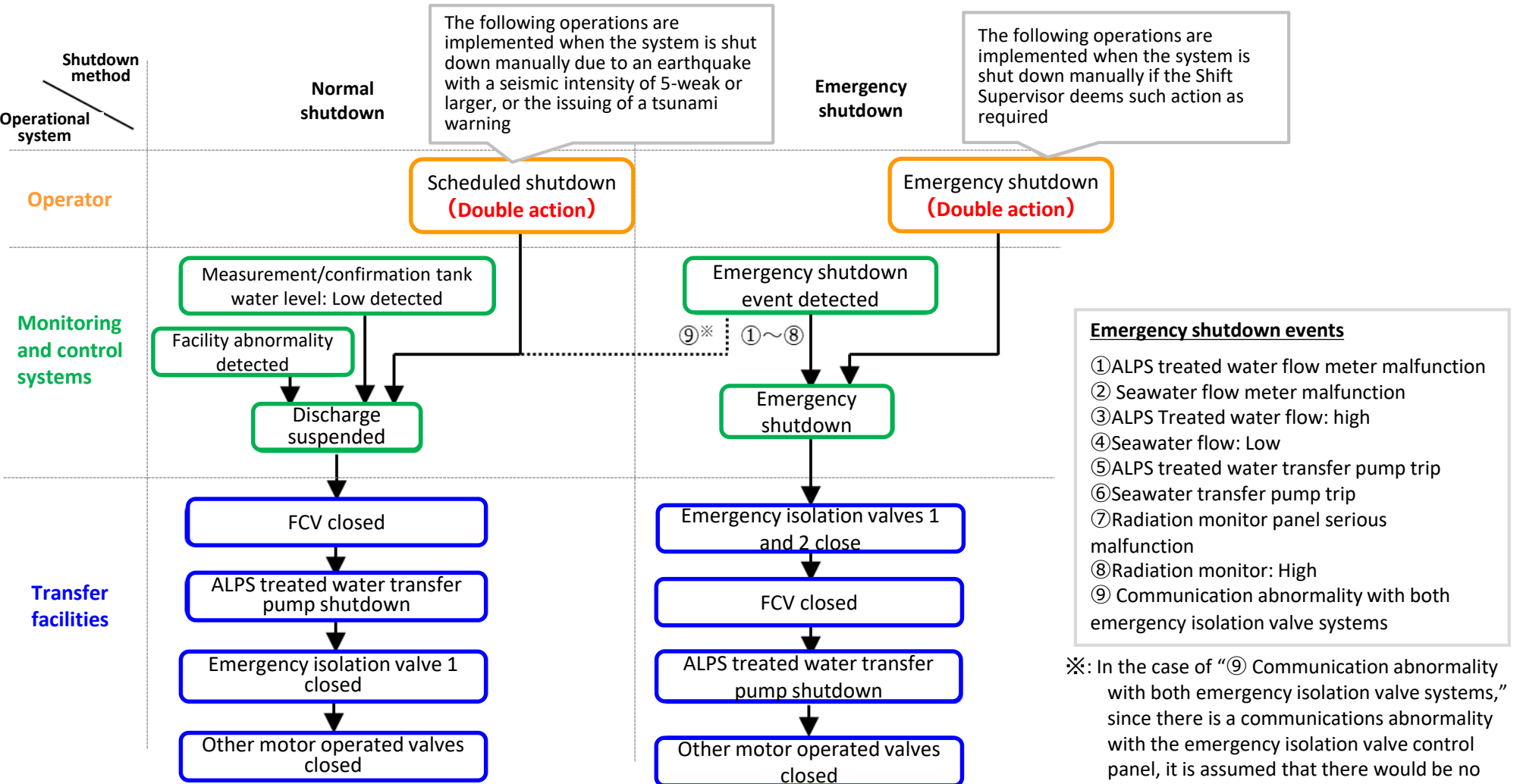
## 1-5. Information on the event resulting in the automatic suspension of the discharge of ALPS treated water into the sea (2/2)

### ■ June 13, 2026

- 5:04 p.m. : A decrease in seawater transfer pump flow in the ALPS treated water dilution/discharge facility resulted in the automatic suspension of discharge※. It is assumed that the decrease in the seawater transfer pump flow was caused by a temporary loss of power to Units 5/6 in conjunction with the temporary and simultaneous loss of power from both Futaba power lines, which are off-site power sources, caused by a lightning strike.
  
- 7:00 p.m. : A field patrol confirmed that there were no abnormalities with facilities after the suspension of discharge
  
- 10:34 p.m. Discharge was recommenced after checking system configuration

※ This shutdown constituted an “emergency shutdown” to prevent the unintentional discharge of ALPS treated water into the ocean (emergency isolation valves 1 and 2 closed first)

# [Supplement] Normal/emergency shut-down operation flow



- Emergency shutdown events**
- ①ALPS treated water flow meter malfunction
  - ② Seawater flow meter malfunction
  - ③ALPS Treated water flow: high
  - ④Seawater flow: Low
  - ⑤ALPS treated water transfer pump trip
  - ⑥Seawater transfer pump trip
  - ⑦Radiation monitor panel serious malfunction
  - ⑧Radiation monitor: High
  - ⑨ Communication abnormality with both emergency isolation valve systems

※: In the case of “⑨ Communication abnormality with both emergency isolation valve systems,” since there is a communications abnormality with the emergency isolation valve control panel, it is assumed that there would be no problem with system operation, so the operations used for normal discharge shutdown would apply.

# 1-6. Sea area monitoring history (1/3)

○ Measurement results of tritium concentrations in water sampled in the vicinity of the discharge outlet (within 3km of the power station) and outside of the vicinity of the discharge outlet (within a 10km square in front of the power station) are all below indices (discharge suspension level and investigation level). (Unit: Bq/L)

(Unit: Bq/L)

	Sampling location*3	Frequency	June 2026										
			1*4	2	3	4	5	6	7	8	9	10	11
In the vicinity of the discharge outlet	T-1	Twice a week*1	<5.9	-	-	<5.5	-	<8.1	<8.5	<6.7	-	-	<6.9
	T-2	Twice a week*1	<5.9	-	-	<5.5	-	<8.1	<8.5	<6.7	-	-	<6.9
	T-0-1	Once a day*2	<5.5	<6.9	<6.5	_*5	_*5	_*5	_*5	_*5	_*5	<6.3	<6.9
	T-0-1A	Once a day*2	<5.5	<6.9	<6.3	_*5	_*5	_*5	_*5	_*5	_*5	<6.9	<9.1
	T-0-2	Once a day*2	<5.5	<6.8	<6.4	_*5	_*5	_*5	_*5	_*5	_*5	<6.2	<6.9
	T-0-3A	Twice a week*1	<7.4	-	-	_*5	_*5	_*5	_*5	_*5	_*5	<7.4	<9.2
	T-0-3	Twice a week*1	<5.5	-	-	_*5	_*5	_*5	_*5	_*5	_*5	<6.3	<9.2
	T-A1	Twice a week*1	<7.3	-	-	_*5	_*5	_*5	_*5	_*5	_*5	<7.3	<8.9
	T-A2	Once a day*2	<7.3	<6.9	<6.3	_*5	_*5	_*5	_*5	_*5	_*5	<7.4	<6.0
T-A3	Twice a week*1	<7.3	-	-	_*5	_*5	_*5	_*5	_*5	_*5	<7.4	<6.0	
Outside the vicinity of the discharge outlet	T-D5	Once a week	<5.9	-	-	-	-	-	-	-	-	<6.8	-
	T-S3	Once a month	-	-	<7.2	-	-	-	-	-	-	-	-
	T-S4	Once a month	-	-	<7.3	-	-	-	-	-	-	-	-
	T-S8	Once a month	-	-	<7.3	-	-	-	-	-	-	-	-

※: A "less than" symbol (<) indicates that the analysis result was less than the detection limit  indicates that the detected value  : Term of discharge of ALPS treated water

\*1: Conduct twice a week during the discharge period and for one week following the completion of discharge. Conduct once a month outside the discharge period, excluding the one week following the completion of discharge

\*2: Conduct once a day during the discharge period and for one week following the completion of discharge. Conduct once a week outside the discharge period, excluding the one week following the completion of discharge

\*3: For sampling locations, refer to "[Reference] Measurement monitoring plan"

\*4: Sampled after the commencement of discharge at 1PM \*5: Sampling suspended due to bad weather condition

# 1-6. Sea area monitoring history (2/3)

(Unit: Bq/L)

	Sampling location*3	Frequency	June 2026								
			12	13	14	15	16	17	18	19	20*4
In the vicinity of the discharge outlet	T-1	Twice a week*1	-	-	-	<8.2	-	-	<6.8	-	-
	T-2	Twice a week*1	-	-	-	<8.2	-	-	<6.8	-	-
	T-0-1	Once a day*2	<7.9	<6.4	<5.1	<7.1	<7.0	<9.4	<6.2	<6.7	<6.2
	T-0-1A	Once a day*2	<8.1	<8.9	<9.4	13	<6.2	<5.9	<6.2	<7.5	<5.4
	T-0-2	Once a day*2	<7.9	<6.4	<5.1	<7.1	<7.0	<9.3	<6.2	<6.6	<6.2
	T-0-3A	Twice a week*1	-	-	-	<6.5	-	-	<7.1	-	-
	T-0-3	Twice a week*1	-	-	-	<7.1	-	-	<6.2	-	-
	T-A1	Twice a week*1	-	-	-	<6.5	-	-	<7.0	-	-
	T-A2	Once a day*2	<8.1	<8.9	<9.4	<6.5	<6.2	<5.9	<7.1	<7.6	<5.4
	T-A3	Twice a week*1	-	-	-	<6.5	-	-	<7.0	-	-
Outside the vicinity of the discharge outlet	T-D5	Once a week	-	-	-	-	-	<5.9	-	-	-
	T-S3	Once a month	-	-	-	-	<7.4	-	-	-	-
	T-S4	Once a month	-	-	-	-	<7.4	-	-	-	-
	T-S8	Once a month	-	-	-	-	<7.4	-	-	-	-

※: A "less than" symbol (<) indicates that the analysis result was less than the detection limit   indicates that the detected value   : Term of discharge of ALPS treated water

\*1: Conduct twice a week during the discharge period and for one week following the completion of discharge. Conduct once a month outside the discharge period, excluding the one week following the completion of discharge

\*2: Conduct once a day during the discharge period and for one week following the completion of discharge. Conduct once a week outside the discharge period, excluding the one week following the completion of discharge

\*3: For sampling locations, refer to "[Reference] Measurement monitoring plan"

\*4: Sampled before the completion of discharge at 9AM

# 1-6. Sea area monitoring history (3/3)

(Unit: Bq/L)

	Sampling location <sup>*3</sup>	Frequency	June 2026							
			21	22	23	24	25	26	27	29
In the vicinity of the discharge outlet	T-1	Twice a week <sup>*1</sup>	-	<6.1	-	-	<8.7	-	-	-
	T-2	Twice a week <sup>*1</sup>	-	<6.1	-	-	<8.8	-	-	-
	T-0-1	Once a day <sup>*2</sup>	<7.0	_*4	_*4	<6.7	<9.1	_*4	<6.9	<7.5
	T-0-1A	Once a day <sup>*2</sup>	<6.9	_*4	_*4	<6.4	<5.7	_*4	<7.1	<7.6
	T-0-2	Once a day <sup>*2</sup>	<7.0	_*4	_*4	<6.7	<8.8	_*4	<7.2	<7.6
	T-0-3A	Twice a week <sup>*1</sup>	-	_*4	_*4	<6.4	<8.8	-	-	-
	T-0-3	Twice a week <sup>*1</sup>	-	_*4	_*4	<6.4	<5.6	-	-	-
	T-A1	Twice a week <sup>*1</sup>	-	_*4	_*4	<7.2	<5.6	-	-	-
	T-A2	Once a day <sup>*2</sup>	<7.0	_*4	_*4	<7.2	<5.7	_*4	<7.1	<7.6
	T-A3	Twice a week <sup>*1</sup>	-	_*4	_*4	<7.1	<5.7	-	-	-
Outside the vicinity of the discharge outlet	T-D5	Once a week	-	-	-	<6.6	-	-	-	<7.8
	T-S3	Once a month	-	-	-	-	-	-	-	-
	T-S4	Once a month	-	-	-	-	-	-	-	-
	T-S8	Once a month	-	-	-	-	-	-	-	-

※: A "less than" symbol (<) indicates that the analysis result was less than the detection limit indicates that the detected value : Term of discharge of ALPS treated water

\*1: Conduct twice a week during the discharge period and for one week following the completion of discharge. Conduct once a month outside the discharge period, excluding the one week following the completion of discharge

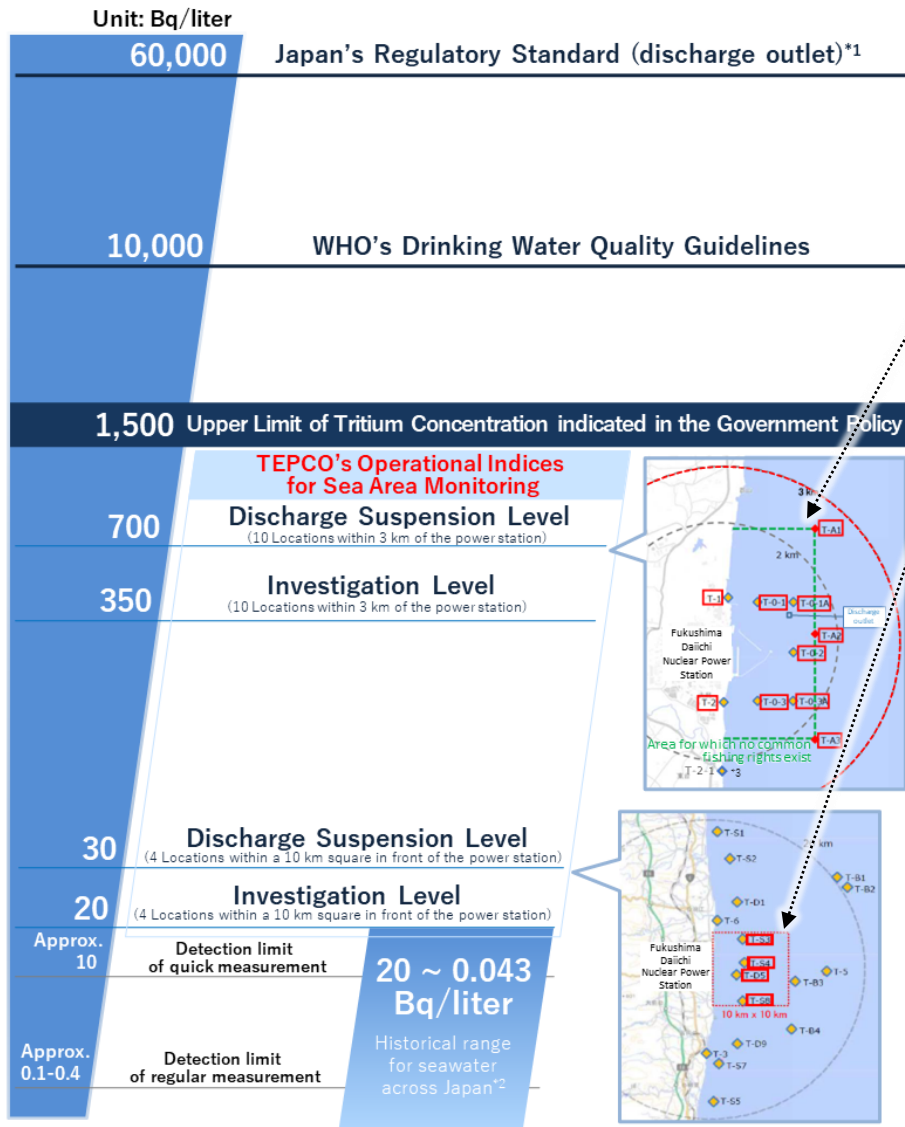
\*2: Conduct once a day during the discharge period and for one week following the completion of discharge. Conduct once a week outside the discharge period, excluding the one week following the completion of discharge

\*3: For sampling locations, refer to "[Reference] Measurement monitoring plan"

\*4: Sampling suspended due to bad weather condition

# [Supplement] Comparison of tritium concentration in seawater **TEPCO**

## [Reference] Comparison of concentration of tritium in seawater



- We have set a discharge suspension level and an investigation level as TEPCO's operational indices.

	Discharge suspension level	Investigation level
<u>Within 3km of the power station</u>	700 Bq/L	350 Bq/L
<u>Within a 10km square in front of the power station</u>	30 Bq/L	20 Bq/L

If the discharge suspension level is exceeded, the sea discharge will be immediately suspended.

If the investigation level is exceeded, facilities/operation status will be inspected and the frequency of monitoring will be increased as necessary.

- Even if the tritium concentration exceeds indices (Discharge suspension level and Investigation level), the levels are well below the Japan's regulatory standard of 60,000 Bq/L and the WHO's drinking water quality guidelines of 10,000 Bq/L, and we assess that the surrounding sea areas are still safe.

- It is expected that the concentration of tritium in seawater will be affected depending on the concentration of tritium in the treated water to be released in the future, and higher values than before will be detected. Even in such cases, it is evaluated that the concentration will remain below the investigation level and other indices.

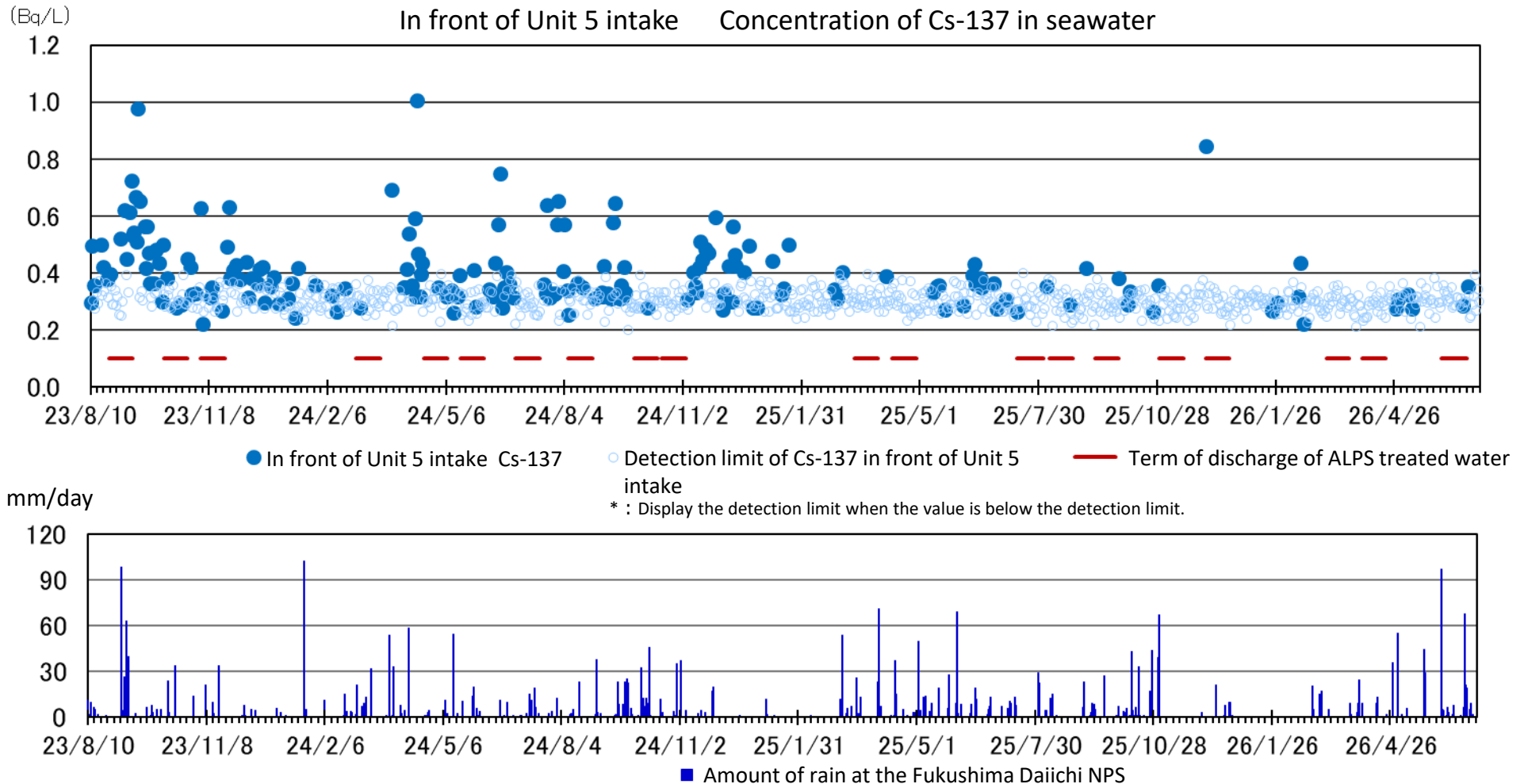
\*1: This standard has been stipulated based on the calculation that if a person were to drink approximately 2L of the water coming out of the discharge outlet of a nuclear facility every day for one year, his/her exposure would be 1mSv.

\*2: Source: Environmental Radioactivity and Radiation in Japan (Period: April 2019 to March 2022)

\*3: Alternative location if safety cannot be ensured at T-2

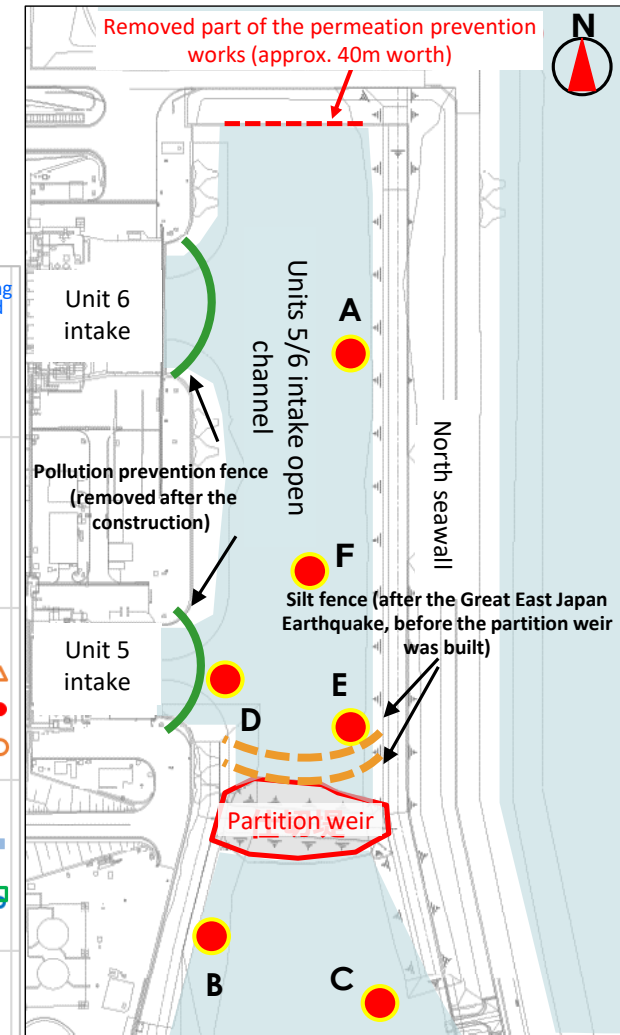
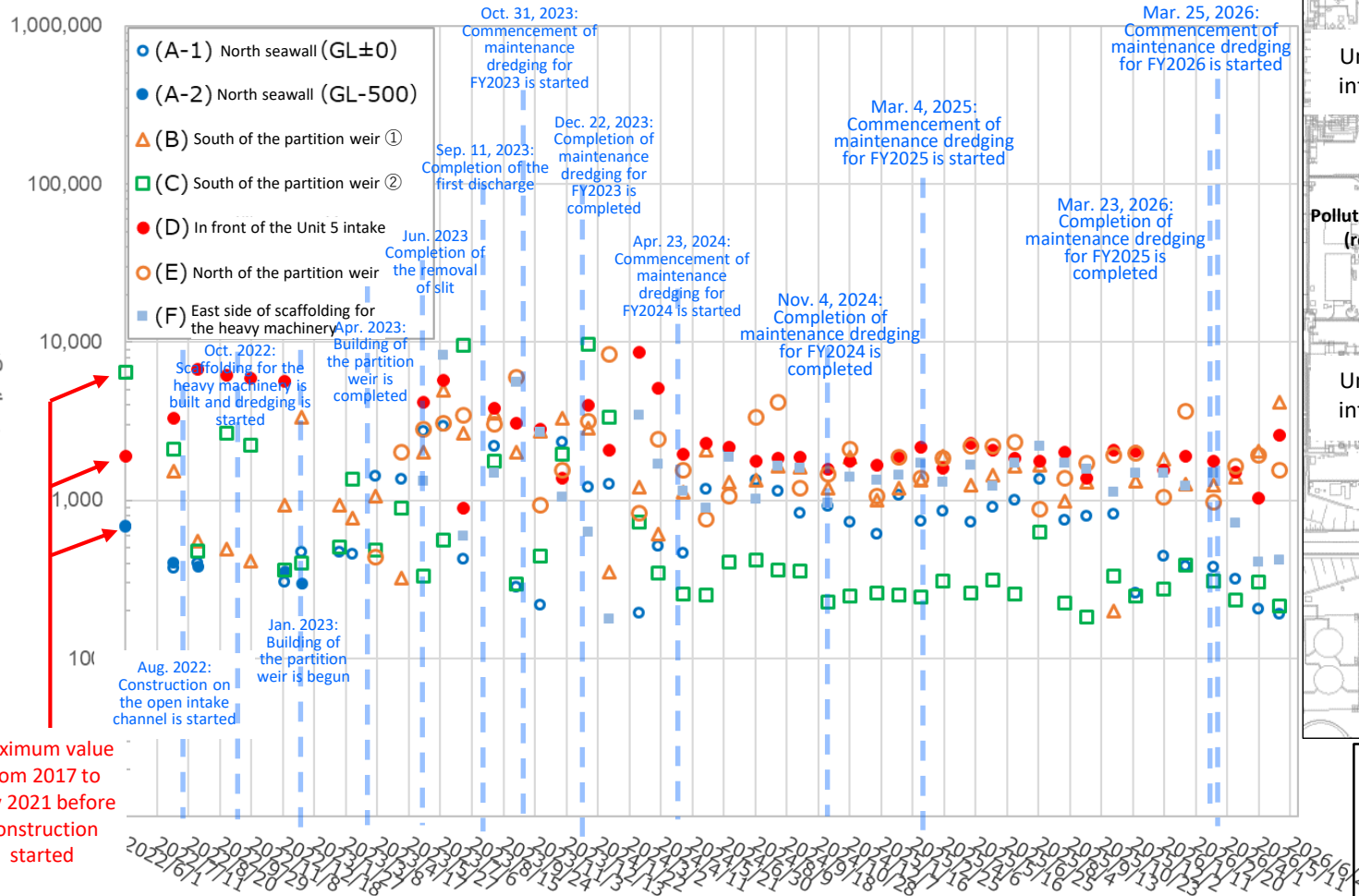
# 1-7. Unit 5 intake channel monitoring

- Sea water monitoring results at near the intake for seawater to be used for dilution during the discharge of ALPS treated water have confirmed that values are similar to those outside of the term of the discharge.



# 1-8. Monitoring results for seabed soil inside the Unit 5/6 intake open channel (1)

- Monitoring results for seabed soil in front of Unit 5 intake did not show significant fluctuations from the beginning of construction at the intake open channel until December 2022. While they showed higher readings after January 2023, we have confirmed that these readings decreased after the completion of silt removal.
- We will continue to monitor the seabed soil.

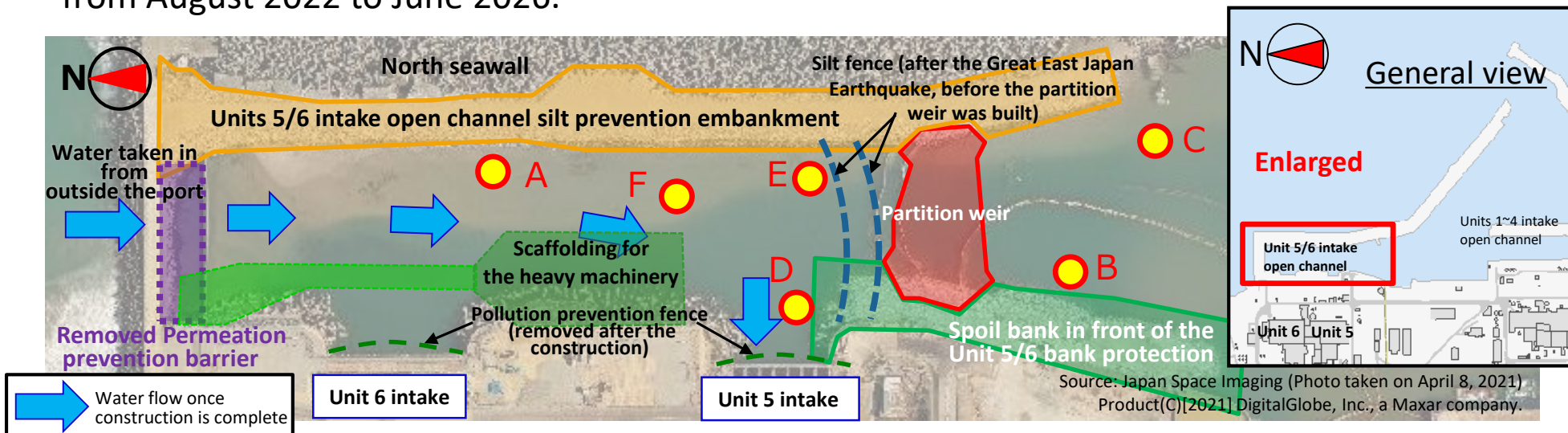


<Legend>

- Sampling location in construction
- Silt fence (before the partition weir was built)
- Pollution prevention fence

# 1-8. Monitoring results for seabed soil inside the Unit 5/6 intake open channel (2)

➤ The following shows monitoring results for seabed soil inside the unit 5/6 intake open channel from August 2022 to June 2026.



Source: Japan Space Imaging (Photo taken on April 8, 2021)  
Product(C)[2021] DigitalGlobe, Inc., a Maxar company.

Sampling points		Before construction	FY2022	FY2023	FY2024	FY2025	FY2026		
		2017 to July 2021	Aug. ~ Mar.	Apr. ~ Mar.	Apr. ~ Mar.	Apr. ~ Mar.	Apr.	May	Jun.
A-1 North side of the Unit 5/6 open channel (North side of the silt fence (GL±0m))	Cs-134	ND~9.5 (4.4)	ND (31.5~39.8)	ND~65.5 (32.0)	ND (34.4~64.5)	ND (29.7~92.3)	ND (24.3)	ND (34.8)	ND (24.7)
	Cs-137	163.6~678.6	303.2~468.1	216.7~2975.0	461.7~2107.0	258.1~1352.0	316.9	204.3	190.4
A-2 North side of the Unit 5/6 open channel (North side of the silt fence (GL-0.5m))	Cs-134	ND~20.0 (25.6)	ND (32.5~38.3)	※Only sampled from the surface (GL±0m) since sand was removed during dredging					
	Cs-137	310.0~689.8	299.1~404.0						
B South side of the partition weir (South side of the silt fence)	Cs-134	723.0	ND~73.9 (42.1)	ND~97.1 (38.2)	ND (35.1~64.5)	ND (35.7~84.1)	ND (63.8)	ND (45.4)	ND (51.4)
	Cs-137	6,475.0	412.8~3,331.0	323.8~4943.0	613.8~1889.0	200.1~1889.0	1,408.0	2,040.0	4,198.0
C South side of the partition weir (South side of the silt fence)	Cs-134	183.0	ND~51.3 (30.9)	ND~234.8 (37.1)	ND (26.5~48.6)	ND (25.1~50.7)	ND (38.8)	ND (25.2)	ND (34.1)
	Cs-137	1,893.0	360.8~2,671.0	295.9~9519.0	227.4~419.6	182.1~633.3	233.6	304.0	214.5
D Unit 5 intake	Cs-134	—	101.6~3,546.0	ND~690.7 (50.3)	ND~114.8 (35.9)	ND (37.6~80.5)	ND (53.4)	ND (52.7)	ND (61.9)
	Cs-137	—	3,301.0~144,000.0	951.7~26400.0	1563.0~2306.0	1380.0~2306.0	1,509.0	1,026.0	2,575.0
E North side of the partition weir	Cs-134	—	—	ND~161.2 (35.6)	ND (30.0~59.7)	ND (36.0~82.8)	ND (40.5)	ND (53.5)	ND (43.7)
	Cs-137	—	—	437.1~5795.0	746.6~4154.0	882.6~3652.0	1,654.0	1,921.0	1,560.0
F East side of scaffolding for the heavy machinery	Cs-134	—	—	ND~166.1 (31.3)	ND (34.1~87.1)	ND (34.1~69.2)	ND (58.3)	ND (38.7)	ND (33.7)
	Cs-137	—	—	592.4~8303.0	891.0~1884.0	1122.0~2187.0	713.2	404.5	416.2

(Note) Unit: Bq/liter, Figures in gray indicate that all data during the relevant period were below the detection limit, the values shown in parentheses in the table above indicate the detection limits.

# [Reference] Total radioactivity of nuclides to be measured and assessed (29 nuclides)

- The following chart shows the total radioactivity (Bq) for nuclides to be measured and assessed (29 nuclides) during the discharge of Management number: 26-2-20. (Calculated from analysis values<sup>※1</sup> (Bq/liter) and discharge volume (7,927m<sup>3</sup>) for each nuclide)

※1: It was confirmed that the sum of the ratios of legally required concentrations of the nuclides targeted for measurement/assessment is 0.45 and less than 1.

- The total radioactivity from nuclides for which analysis values were below detection limit (ND) have not been included.

Nuclide	Analysis value [Bq/liter]	Total radioactivity [Bq]	Nuclide	Analysis value [Bq/liter]	Total radioactivity [Bq]	Nuclide	Analysis value [Bq/liter]	Total radioactivity [Bq]
C-14	1.4E+01	1.1E+08	Cd-113m	<9.4E-02	—	U-234 <sup>※3</sup>	<2.4E-02	—
Mn-54	<2.6E-02	—	Sb-125	<8.8E-02	—	U-238 <sup>※3</sup>	<2.4E-02	—
Fe-55	<1.2E+01	—	Te-125m <sup>※2</sup>	<3.3E-02	—	Np-237 <sup>※3</sup>	<2.4E-02	—
Co-60	2.5E-01	2.0E+06	I-129	3.5E+00	2.8E+07	Pu-238 <sup>※3</sup>	<2.4E-02	—
Ni-63	<8.5E+00	—	Cs-134	<3.7E-02	—	Pu-239 <sup>※3</sup>	<2.4E-02	—
Se-79	<8.3E-01	—	Cs-137	4.7E-01	3.7E+06	Pu-240 <sup>※3</sup>	<2.4E-02	—
Sr-90	4.5E-01	5.0E+06	Pm-147 <sup>※2</sup>	<3.0E-01	—	Pu-241 <sup>※2</sup>	<6.6E-01	—
Y-90 <sup>※2</sup>	4.5E-01	5.0E+06	Sm-151 <sup>※2</sup>	<1.1E-02	—	Am-241 <sup>※3</sup>	<2.4E-02	—
Tc-99	9.5E+00	2.8E+07	Eu-154	<6.7E-02	—	Cm-244 <sup>※3</sup>	<2.4E-02	—
Ru-106	<2.2E-01	—	Eu-155	<2.2E-01	—			

※2 Analysis values were assessed with radioactive equilibrium

※3 Gross Alpha measurements

## 1. Performance of the discharge of ALPS treated water

(Management number\* : 26-2-20)

## 2. Transfer of ALPS treated water in preparation for the future discharges

[Reference 1] Management structure in light of new executive appointments

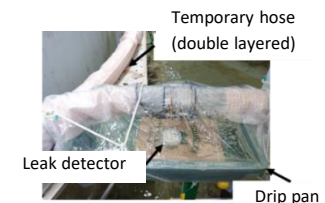
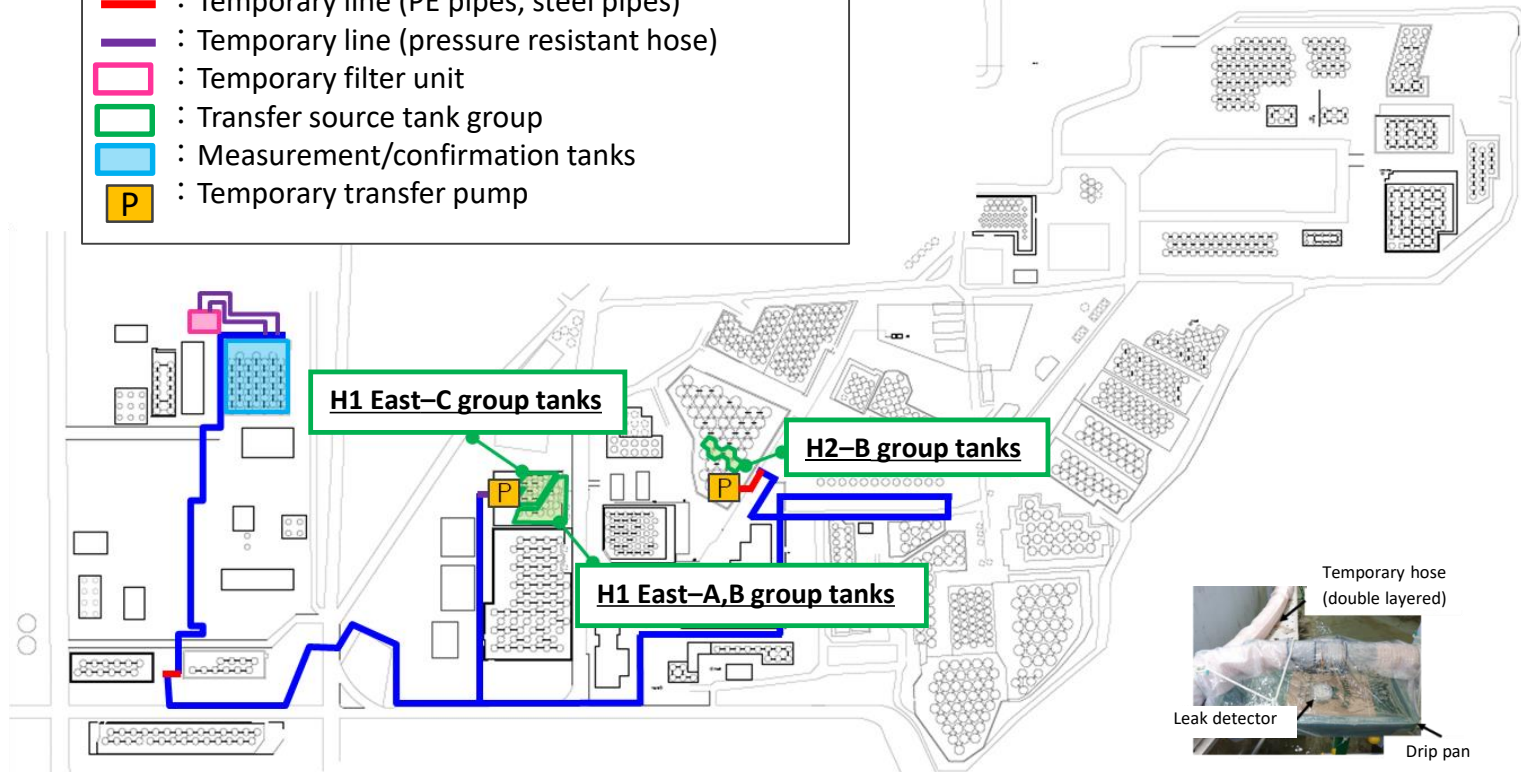
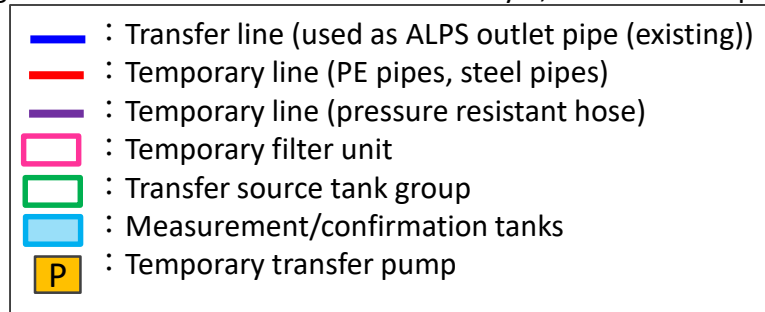
(June 25, 2026)

[Reference 2] Sea area monitoring history after the commencement of discharge

\* The management number is made up of the fiscal year, followed by the discharge number for that fiscal year, and the total number of discharges to date.  
For example, "26-2-20" indicates that the data is for the second discharge of 2026, which is the twentieth discharge to date.

## 2. Transfer of ALPS treated water in preparation for the future discharges

- Transfer of ALPS treated water from H1 East area Group A/B/C to measurement/confirmation facility tank group A in preparation for the discharge of management number: 26-3-21 commenced from April 22, 2026 to May 20, 2026. (Transferred volume (actual): 7,780 m<sup>3</sup> (H1 East area Group C: 3,580 m<sup>3</sup>, H1 East area Group A/B: 4,200 m<sup>3</sup>) Circulation/agitation of the tanks commenced on May 22, 2026 and samples were taken on May 29, 2026. Currently under analysis.
- Transfer of ALPS treated water from H1 East area Group A/B to measurement/confirmation facility tank group C in preparation for the discharge of management number: 26-4-22 was commenced from May 22, 2026 to June 4, 2026. (Transferred volume (actual): 7,770 m<sup>3</sup> (H1 East area Group C: 7,770 m<sup>3</sup>) Circulation/agitation of the tanks commenced on June 15, 2026 and samples were taken on June 22, 2026. Currently under analysis.
- Transfer of ALPS treated water from H1 East area Group A/B and H2 area Group B to measurement/confirmation facility tank group B in preparation for the discharge of management number: 26-5-23 commenced on June 22, 2026, and transfer is scheduled to be completed on July 6, 2026. Circulation/agitation of the tanks commenced on July 9, 2026 and samples will be taken on July 16, 2026.



Images of leak countermeasures

## 1. Performance of the discharge of ALPS treated water

(Management number\* : 26-2-20)

## 2. Transfer of ALPS treated water in preparation for the future discharges

### **[Reference 1] Management structure in light of new executive appointments**

**(June 25, 2026)**

### [Reference 2] Sea area monitoring history after the commencement of discharge

\* The management number is made up of the fiscal year, followed by the discharge number for that fiscal year, and the total number of discharges to date.  
For example, "26-2-20" indicates that the data is for the second discharge of 2026, which is the twentieth discharge to date.

- In August 2023, a system for cross-departmental oversight of all internal units was created in order to smoothly engage in initiatives such as the safe discharge of ALPS treated water, reputational damage countermeasures, and compensation payment, etc., as well coordinate with stakeholders in Japan and overseas.
- In light of the new executive officer appointments made on June 25, 2026, this system is structured as follows.
- Under this system, TEPCO will continue to safely and steadily discharge ALPS treated water and thoroughly implement reputational damage countermeasures.

(1) ALPS Treated Water Integrated Countermeasure Project Team structure

Team leader	Tomoaki Kobayakawa, President
Deputy team leaders	Akira Ono, Executive Vice President Momoko Nagasaki, Executive Vice President Nobuhide Akimoto, Managing Executive Officer Tomomichi Seki, Managing Executive Officer Masayuki Kishino, Managing Executive Officer Akinori Muramatsu, Managing Executive Officer Yoshihiko Shinobu, Managing Executive Officer Shigehiro Yoshino, Director and Executive officer
Team members	Comprised of relevant department office heads, etc. from the Head Office, Fukushima Revitalization Headquarters, and Fukushima Daiichi D&D Engineering Company

(2) ALPS Treated Water Impact Countermeasures Team structure

Team leader	Nobuhide Akimoto, Managing Executive Officer
Assistant team leader	Yoichiro Asakawa, General Manager, Plant Siting and Regional Relations Office
Team members	Relevant personnel from the Head Office and Fukushima Revitalization Headquarters

■ ALPS Treated Water Integrated Countermeasure Project Team

Project team under the direct supervision of the President that provides cross-departmental oversight of departments involved with the Fukushima Daiichi Nuclear Power Station, compensation and reputational damage countermeasures, and regional relations, so as to enable upper management to ascertain information at the appropriate times and quickly give instructions

■ ALPS Treated Water Impact Countermeasures Team

Dedicated team at the Head Office led by a Managing Executive Officer that centrally manages distribution countermeasures, compensation measures, and information dissemination throughout the entire country

## 1. Performance of the discharge of ALPS treated water

(Management number\* : 26-2-20)

## 2. Transfer of ALPS treated water in preparation for the future discharges

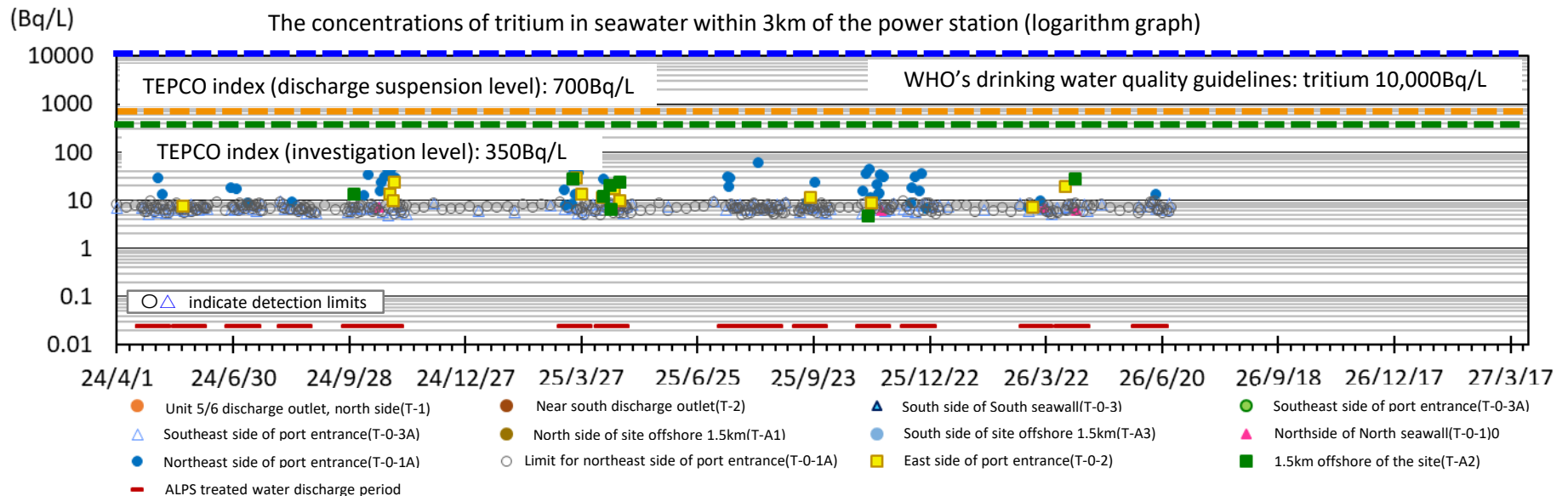
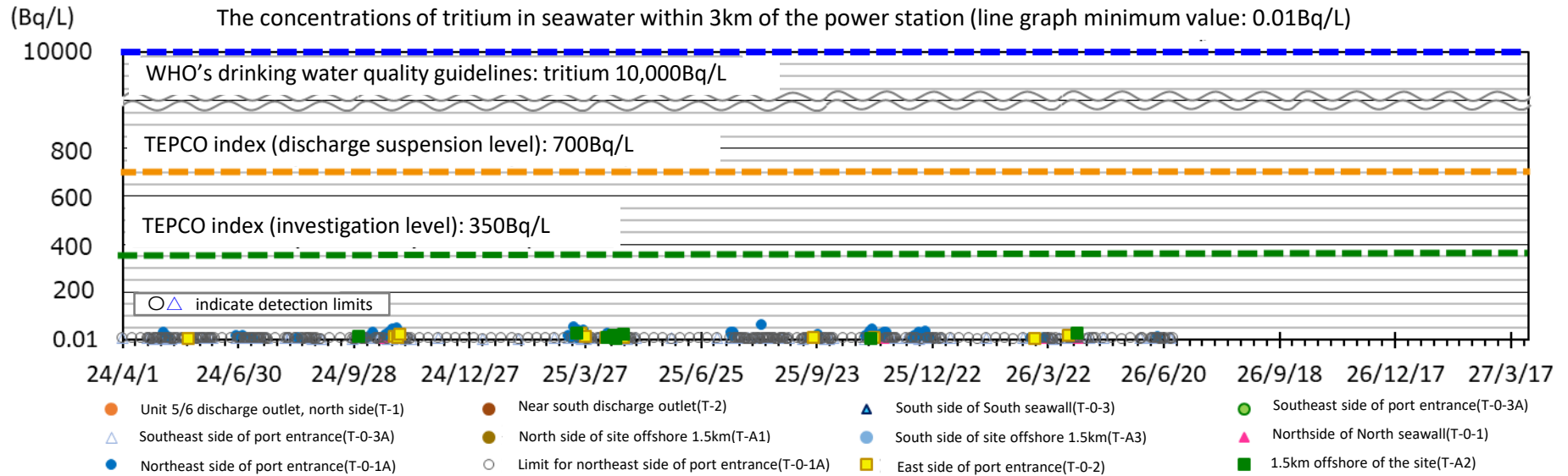
[Reference 1] Management structure in light of new executive appointments

(June 25, 2026)

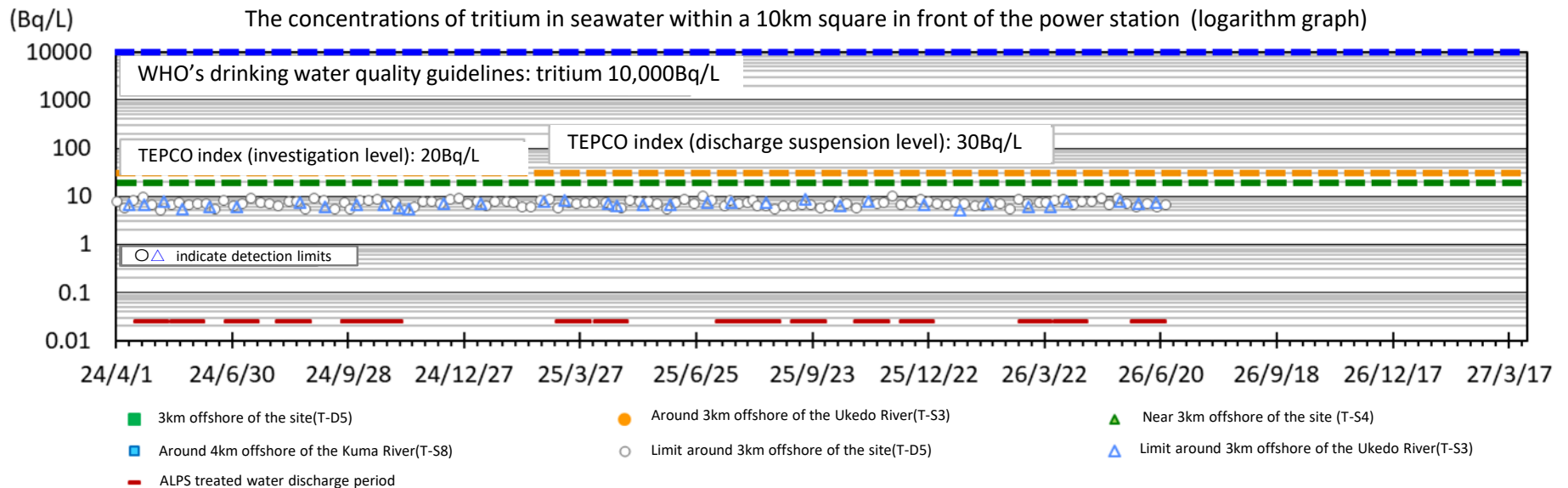
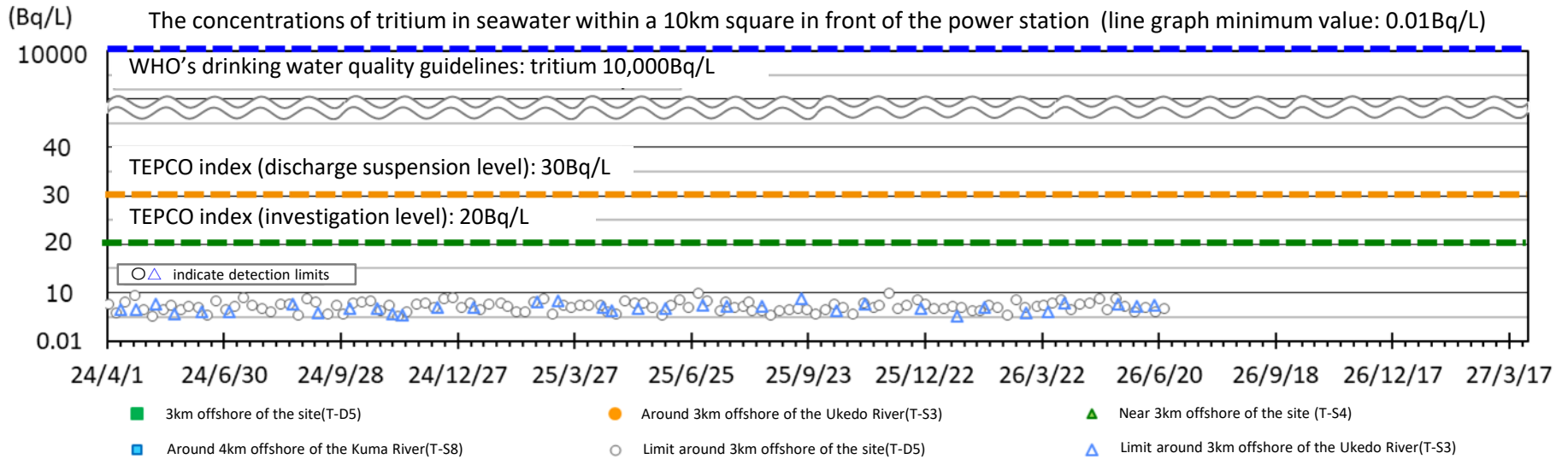
**[Reference 2] Sea area monitoring history after the commencement of discharge**

\* The management number is made up of the fiscal year, followed by the discharge number for that fiscal year, and the total number of discharges to date.  
For example, "26-2-20" indicates that the data is for the second discharge of 2026, which is the twentieth discharge to date.

Within 3km of the power station



Within a 10km square in front of the power station



# [Reference] Sea area monitoring plan

## for obtaining quick measurements of the concentration of tritium in seawater

- We have engaged in monitoring to obtain quick measurements of the concentration of tritium in seawater with targeting the upper detection limit for 10Bq/liter, and index to determine discharge suspension (the discharge suspension level) was set.

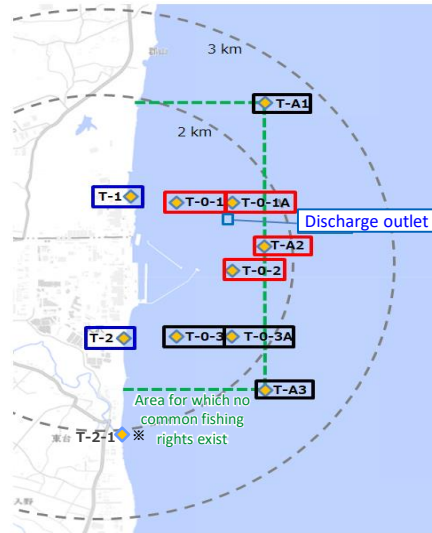


Figure 1: Specimen sampling locations within 3km of the power station (near the discharge outlet)

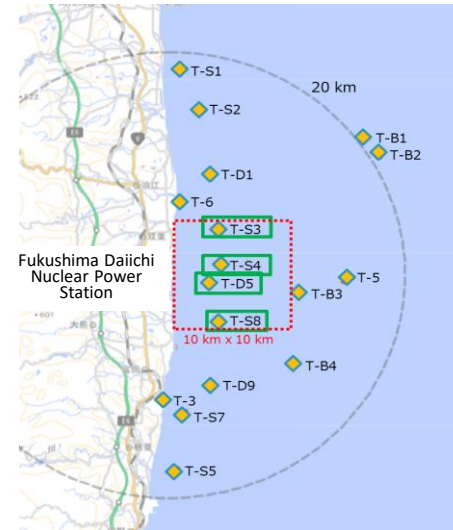


Figure 2: Specimen sampling locations within a 10km square in front of the power station

: Monitoring points used to obtain quick results (10 locations)  
**Index (Discharge suspension level) 700Bq/L**  
 ※ Alternative location if safety cannot be secured at T-2

: Monitoring points used to obtain quick results (4 locations)  
**Index (Discharge suspension level) 30Bq/L**

	【Fig.1】 Within a 3km of the power station (near the discharge outlet)		【Fig. 2】 Four locations within a 10km square in front of the power station <span style="border: 1px solid green; display: inline-block; width: 10px; height: 10px; vertical-align: middle;"></span>
	Four locations in the vicinity of the discharge outlet <span style="border: 1px solid red; display: inline-block; width: 10px; height: 10px; vertical-align: middle;"></span>	Other six locations <span style="border: 1px solid blue; display: inline-block; width: 10px; height: 10px; vertical-align: middle;"></span> <span style="border: 1px solid black; display: inline-block; width: 10px; height: 10px; vertical-align: middle;"></span>	
During the discharge period and for one week after the completion of discharge	Daily <sup>※1</sup>	Twice a week <sup>※2</sup>	T-D5: Once a week T-S3, T-S4, T-S8: Once a month
During the discharge suspension period (Excluding the week following the completion of discharge)	Once a week <sup>※2</sup>	Once a month <sup>※2</sup>	

※1 If bad weather during the discharge period prevents measurements for being taken for two consecutive days, on the following day (third day) if it is again expected that measurements cannot be taken, measured results will be quickly obtained from T-1 and T-2.

※2 Since the commencement of discharge in August 2023, the monitoring plan was changed on December 26, 2023 in light of actual measurements taken during discharge. (Announced on December 25, 2023)