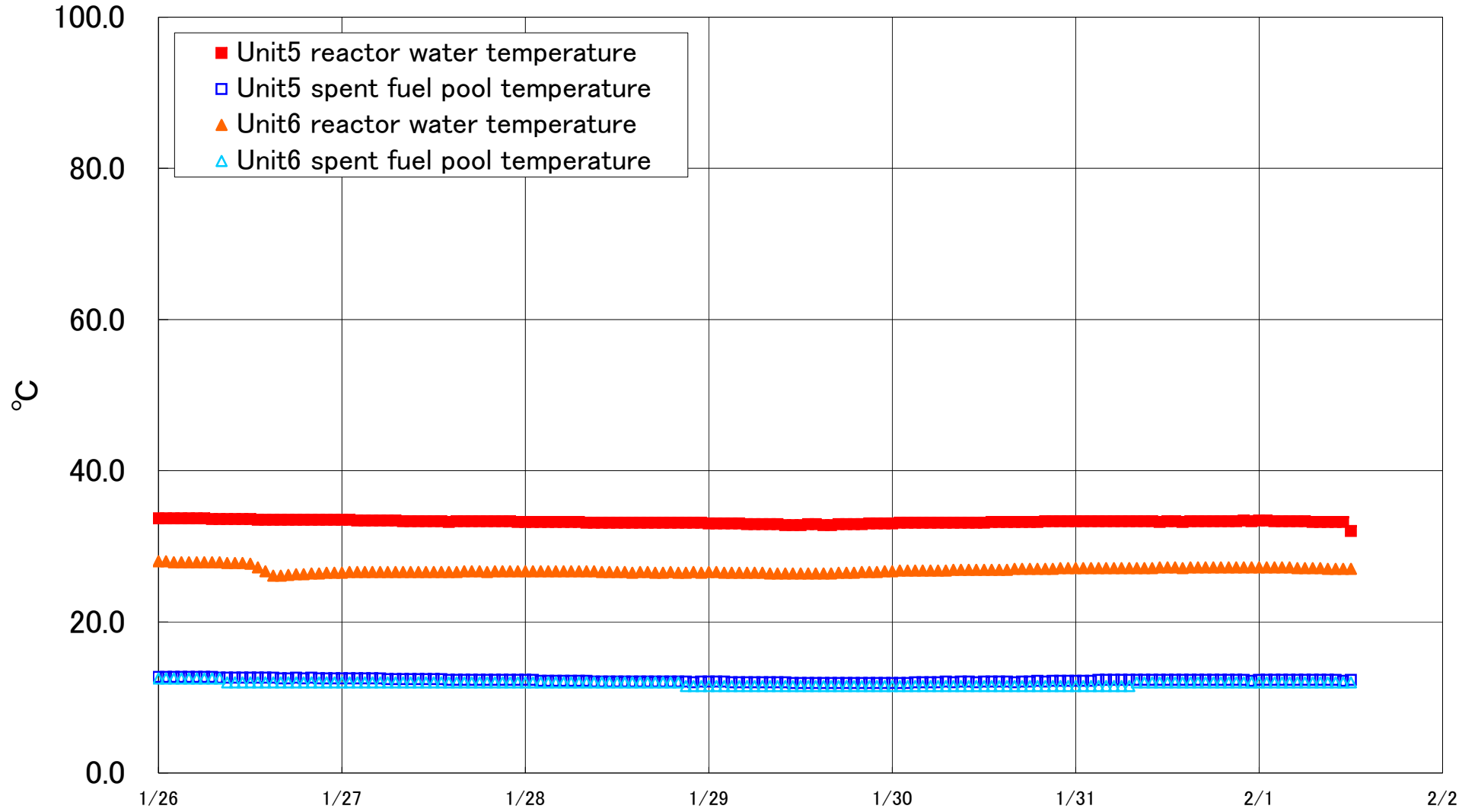


Fukushima Daiichi Nuclear Power Station Units 5·6 Reactor water /spent fuel pool temperature



Fukushima Daiichi Nuclear Power Station Unit5·6 Reactor water/spent fuel pool temperature

Date	Unit5 reactor water temperature	Unit5 spent fuel pool temperature	Unit6 reactor water temperature	Unit6 spent fuel pool temperature
1/29 20:00	32.9	11.9	26.6	11.5
1/29 21:00	33.0	11.9	26.6	11.5
1/29 22:00	33.0	11.9	26.6	11.5
1/29 23:00	33.0	11.9	26.7	11.5
1/30 0:00	33.0	11.9	26.7	11.5
1/30 1:00	33.1	11.9	26.8	11.5
1/30 2:00	33.1	11.9	26.8	11.5
1/30 3:00	33.1	12.0	26.8	11.5
1/30 4:00	33.1	12.0	26.8	11.5
1/30 5:00	33.1	12.0	26.8	11.5
1/30 6:00	33.1	12.0	26.8	11.5
1/30 7:00	33.1	12.1	26.8	11.5
1/30 8:00	33.1	12.0	26.9	11.5
1/30 9:00	33.1	12.1	26.9	11.5
1/30 10:00	33.1	12.1	26.9	11.5
1/30 11:00	33.1	12.0	26.9	11.5
1/30 12:00	33.1	12.1	26.9	11.5
1/30 13:00	33.2	12.1	26.9	11.5
1/30 14:00	33.2	12.1	26.9	11.5
1/30 15:00	33.2	12.1	26.9	11.5
1/30 16:00	33.2	12.0	27.0	11.5
1/30 17:00	33.2	12.1	27.0	11.5
1/30 18:00	33.2	12.1	27.0	11.5
1/30 19:00	33.2	12.2	27.0	11.5
1/30 20:00	33.3	12.1	27.0	11.5
1/30 21:00	33.3	12.2	27.0	11.5
1/30 22:00	33.3	12.2	27.1	11.5
1/30 23:00	33.3	12.2	27.1	11.5
1/31 0:00	33.3	12.2	27.1	11.5
1/31 1:00	33.3	12.2	27.1	11.5
1/31 2:00	33.3	12.2	27.1	11.5
1/31 3:00	33.3	12.3	27.1	11.5
1/31 4:00	33.3	12.3	27.1	11.5
1/31 5:00	33.3	12.3	27.1	11.5
1/31 6:00	33.3	12.3	27.1	11.5
1/31 7:00	33.3	12.3	27.1	11.5
1/31 8:00	33.3	12.3	27.1	12.0
1/31 9:00	33.3	12.3	27.1	12.0
1/31 10:00	33.3	12.3	27.1	12.0
1/31 11:00	33.2	12.3	27.2	12.0
1/31 12:00	33.3	12.3	27.2	12.0
1/31 13:00	33.3	12.3	27.2	12.0
1/31 14:00	33.2	12.3	27.1	12.0
1/31 15:00	33.3	12.3	27.2	12.0
1/31 16:00	33.3	12.3	27.2	12.0
1/31 17:00	33.3	12.3	27.2	12.0
1/31 18:00	33.3	12.3	27.2	12.0
1/31 19:00	33.3	12.3	27.2	12.0
1/31 20:00	33.3	12.3	27.2	12.0
1/31 21:00	33.3	12.3	27.2	12.0
1/31 22:00	33.4	12.3	27.2	12.0
1/31 23:00	33.3	12.2	27.2	12.0
2/1 0:00	33.4	12.3	27.2	12.0
2/1 1:00	33.4	12.3	27.2	12.0
2/1 2:00	33.3	12.3	27.2	12.0
2/1 3:00	33.3	12.3	27.2	12.0
2/1 4:00	33.3	12.3	27.2	12.0
2/1 5:00	33.3	12.3	27.1	12.0
2/1 6:00	33.3	12.3	27.1	12.0
2/1 7:00	33.2	12.3	27.1	12.0
2/1 8:00	33.2	12.3	27.1	12.0
2/1 9:00	33.2	12.3	27.0	12.0
2/1 10:00	33.2	12.3	27.0	12.0
2/1 11:00	33.2	12.2	27.0	12.0
2/1 12:00	32.0	12.3	27.0	12.0