

Nuclide Analysis Results of Fish and Shellfish (The Ocean Area Within 20km Radius of Fukushima Daiichi NPS) < 1/10 >

(Data summarized on March 15)

Name of Sample (Region)	Place of Sampling (Place No.)	Date of Sampling	Radioactivity Density [Bq/kg (Raw)] (Half-life)		
			Cs-134 (Approx. 2 years)	Cs-137 (Approx. 30 years)	Total
Northern dogfish (Muscle)	Around 3km Offshore of Ukedo River (T-S3)	February 20, 2013	ND	13	13
Snailfish (Muscle)	Around 3km Offshore of Ukedo River (T-S3)	February 20, 2013	ND	ND	ND
Sea raven (Muscle)	Around 3km Offshore of Ukedo River (T-S3)	February 20, 2013	79	120	199
Common skete (Muscle)	Around 3km Offshore of Ukedo River (T-S3)	February 20, 2013	110	220	330
Sea bass (Muscle)	Around 3km Offshore of Ukedo River (T-S3)	February 20, 2013	310	570	880
Ovalipes unctatus (Whole)	Around 3km Offshore of Ukedo River (T-S3)	February 20, 2013	ND	6.8	6.8
Flatfish (Muscle)	Around 3km Offshore of Ukedo River (T-S3)	February 20, 2013	7.7	26	33.7
Marbled sole (Muscle)	Around 3km Offshore of Ukedo River (T-S3)	February 20, 2013	83	150	233
Pacific cod (Muscle)	Around 3km Offshore of Ukedo River (T-S3)	February 20, 2013	9.4	23	32.4
Northern dogfish (Muscle)	Around 3km Offshore of Fukushima Daiichi NPS (T-S4)	February 20, 2013	6.3	11	17.3

* When the measurement value is below the detection limit, "ND" is marked. The detection limits are as follows.

Cs-134: Approx. 4.5Bq/kg (Raw), Cs-137: Approx. 4.2Bq/kg (Raw)

As the detection limit may vary depending on the detectors and sample properties, there are cases where nuclides below the detection limit are detected.

* Standard Value (after April 1, 2012) Cs-134+Cs-137: 100Bq/kg

* Analyzed by Tokyo Electric Power Environmental Engineering Co., Inc.

Nuclide Analysis Results of Fish and Shellfish
(The Ocean Area Within 20km Radius of Fukushima Daiichi NPS) < 2/10 >

(Data summarized on March 15)

Name of Sample (Region)	Place of Sampling (Place No.)	Date of Sampling	Radioactivity Density [Bq/kg (Raw)] (Half-life)		
			Cs-134 (Approx. 2 years)	Cs-137 (Approx. 30 years)	Total
Schlegel's black rockfish (Muscle)	Around 3km Offshore of Fukushima Daiichi NPS (T-S4)	February 20, 2013	180	320	500
Sea raven (Muscle)	Around 3km Offshore of Fukushima Daiichi NPS (T-S4)	February 20, 2013	53	99	152
Common skete (Muscle)	Around 3km Offshore of Fukushima Daiichi NPS (T-S4)	February 20, 2013	74	120	194
Microstoms achne (Muscle)	Around 3km Offshore of Fukushima Daiichi NPS (T-S4)	February 20, 2013	64	110	174
Ovalipes unctatus (Whole)	Around 3km Offshore of Fukushima Daiichi NPS (T-S4)	February 20, 2013	5.3	12	17.3
Flatfish (Muscle)	Around 3km Offshore of Fukushima Daiichi NPS (T-S4)	February 20, 2013	25	51	76
Marbled sole (Muscle)	Around 3km Offshore of Fukushima Daiichi NPS (T-S4)	February 20, 2013	220	430	650
Pacific cod (Muscle)	Around 3km Offshore of Fukushima Daiichi NPS (T-S4)	February 20, 2013	12	16	28
Blue crab (Whole)	Around 4km Offshore of Kumagawa (T-S8)	February 10, 2013	5.7	7.6	13.3
Snailfish (Muscle)	Around 4km Offshore of Kumagawa (T-S8)	February 10, 2013	ND	ND	ND

* When the measurement value is below the detection limit, "ND" is marked. The detection limits are as follows.

Cs-134: Approx. 4.3Bq/kg (Raw), Cs-137: Approx. 3.9Bq/kg (Raw)

As the detection limit may vary depending on the detectors and sample properties, there are cases where nuclides below the detection limit are detected.

* Standard Value (after April 1, 2012) Cs-134+Cs-137: 100Bq/kg

* Analyzed by Tokyo Electric Power Environmental Engineering Co., Inc.

Nuclide Analysis Results of Fish and Shellfish
(The Ocean Area Within 20km Radius of Fukushima Daiichi NPS) < 3/10 >

(Data summarized on March 15)

Name of Sample (Region)	Place of Sampling (Place No.)	Date of Sampling	Radioactivity Density [Bq/kg (Raw)] (Half-life)		
			Cs-134 (Approx. 2 years)	Cs-137 (Approx. 30 years)	Total
Common skete (Muscle)	Around 4km Offshore of Kumagawa (T-S8)	February 10, 2013	85	160	245
Flatfish (Muscle)	Around 4km Offshore of Kumagawa (T-S8)	February 10, 2013	28	49	77
Marbled sole (Muscle)	Around 4km Offshore of Kumagawa (T-S8)	February 10, 2013	92	160	252
Pacific cod (Muscle)	Around 4km Offshore of Kumagawa (T-S8)	February 10, 2013	20	52	72
Blue crab (Whole)	Around 4km Offshore of Kumagawa (T-S8)	February 26, 2013	ND	5.7	5.7
Snailfish (Muscle)	Around 4km Offshore of Kumagawa (T-S8)	February 26, 2013	ND	ND	ND
Common skete (Muscle)	Around 4km Offshore of Kumagawa (T-S8)	February 26, 2013	85	160	245
Spotted halibut (Muscle)	Around 4km Offshore of Kumagawa (T-S8)	February 26, 2013	140	270	410
Marbled sole (Muscle)	Around 4km Offshore of Kumagawa (T-S8)	February 26, 2013	87	130	217
Flathead (Platycephalus sp.) (Muscle)	Around 4km Offshore of Kumagawa (T-S8)	February 26, 2013	42	97	139

* When the measurement value is below the detection limit, "ND" is marked. The detection limits are as follows.

Cs-134: Approx. 3.4Bq/kg (Raw), Cs-137: Approx. 4.2Bq/kg (Raw)

As the detection limit may vary depending on the detectors and sample properties, there are cases where nuclides below the detection limit are detected.

* Standard Value (after April 1, 2012) Cs-134+Cs-137: 100Bq/kg

* Analyzed by Tokyo Electric Power Environmental Engineering Co., Inc.

Nuclide Analysis Results of Fish and Shellfish
(The Ocean Area Within 20km Radius of Fukushima Daiichi NPS) < 4/10 >

(Data summarized on March 15)

Name of Sample (Region)	Place of Sampling (Place No.)	Date of Sampling	Radioactivity Density [Bq/kg (Raw)] (Half-life)		
			Cs-134 (Approx. 2 years)	Cs-137 (Approx. 30 years)	Total
Pacific cod (Muscle)	Around 4km Offshore of Kumagawa (T-S8)	February 26, 2013	15	30	45
Greenling (Muscle)	Around 15km Offshore of Odaka Ward (T-B1)	February 21, 2013	16	30	46
Stone flounder (Muscle)	Around 15km Offshore of Odaka Ward (T-B1)	February 21, 2013	6.1	15	21.1
Lepidotrigla microptera (Muscle)	Around 15km Offshore of Odaka Ward (T-B1)	February 21, 2013	ND	6.9	6.9
Common skate (Muscle)	Around 15km Offshore of Odaka Ward (T-B1)	February 21, 2013	23	50	73
Microstoms achne (Muscle)	Around 15km Offshore of Odaka Ward (T-B1)	February 21, 2013	68	130	198
Flatfish (Muscle)	Around 15km Offshore of Odaka Ward (T-B1)	February 21, 2013	9.8	15	24.8
Pacific cod (Muscle)	Around 15km Offshore of Odaka Ward (T-B1)	February 21, 2013	19	23	42
Octopus dofleini (Muscle)	Around 15km Offshore of Odaka Ward (T-B1)	February 21, 2013	ND	ND	ND
Lepidotrigla microptera (Muscle)	Around 18km Offshore of Ukedo River (T-B2)	February 21, 2013	ND	4.4	4.4

* When the measurement value is below the detection limit, "ND" is marked. The detection limits are as follows.

Cs-134: Approx. 4.3Bq/kg (Raw), Cs-137: Approx. 4.1Bq/kg (Raw)

As the detection limit may vary depending on the detectors and sample properties, there are cases where nuclides below the detection limit are detected.

* Standard Value (after April 1, 2012) Cs-134+Cs-137: 100Bq/kg

* Analyzed by Tokyo Electric Power Environmental Engineering Co., Inc.

Nuclide Analysis Results of Fish and Shellfish
 (The Ocean Area Within 20km Radius of Fukushima Daiichi NPS) < 5/10 >

(Data summarized on March 15)

Name of Sample (Region)	Place of Sampling (Place No.)	Date of Sampling	Radioactivity Density [Bq/kg (Raw)] (Half-life)		
			Cs-134 (Approx. 2 years)	Cs-137 (Approx. 30 years)	Total
Common skete (Muscle)	Around 18km Offshore of Ukedo River (T-B2)	February 21, 2013	40	71	111
Sea bass (Muscle)	Around 18km Offshore of Ukedo River (T-B2)	February 21, 2013	9.7	21	30.7
Microstoms achne (Muscle)	Around 18km Offshore of Ukedo River (T-B2)	February 21, 2013	7.8	27	34.8
Flatfish (Muscle)	Around 18km Offshore of Ukedo River (T-B2)	February 21, 2013	16	45	61
Littlemouth flounder (Muscle)	Around 18km Offshore of Ukedo River (T-B2)	February 21, 2013	8.4	12	20.4
Marbled sole (Muscle)	Around 18km Offshore of Ukedo River (T-B2)	February 21, 2013	12	29	41
Pacific cod (Muscle)	Around 18km Offshore of Ukedo River (T-B2)	February 21, 2013	15	25	40
Roundnose flounder (Muscle)	Around 18km Offshore of Ukedo River (T-B2)	February 21, 2013	ND	ND	ND
Ridged-eye flounder (Muscle)	Around 18km Offshore of Ukedo River (T-B2)	February 21, 2013	3.7	7.9	11.6
Greenling (Muscle)	Around 10km Offshore of Fukushima Daiichi NPS (T-B3)	February 18, 2013	44	70	114

* When the measurement value is below the detection limit, "ND" is marked. The detection limits are as follows.

Cs-134: Approx. 4.1Bq/kg (Raw), Cs-137: Approx. 3.5Bq/kg (Raw)

As the detection limit may vary depending on the detectors and sample properties, there are cases where nuclides below the detection limit are detected.

* Standard Value (after April 1, 2012) Cs-134+Cs-137: 100Bq/kg

* Analyzed by Tokyo Electric Power Environmental Engineering Co., Inc.

Nuclide Analysis Results of Fish and Shellfish
(The Ocean Area Within 20km Radius of Fukushima Daiichi NPS) < 6/10 >

(Data summarized on March 15)

Name of Sample (Region)	Place of Sampling (Place No.)	Date of Sampling	Radioactivity Density [Bq/kg (Raw)] (Half-life)		
			Cs-134 (Approx. 2 years)	Cs-137 (Approx. 30 years)	Total
Stone flounder (Muscle)	Around 10km Offshore of Fukushima Daiichi NPS (T-B3)	February 18, 2013	12	15	27
Andrea cuttlefish (Whole)	Around 10km Offshore of Fukushima Daiichi NPS (T-B3)	February 18, 2013	ND	ND	ND
Schlegel's black rockfish (Muscle)	Around 10km Offshore of Fukushima Daiichi NPS (T-B3)	February 18, 2013	ND	6.3	6.3
Common skete (Muscle)	Around 10km Offshore of Fukushima Daiichi NPS (T-B3)	February 18, 2013	60	110	170
Loliginid (Whole)	Around 10km Offshore of Fukushima Daiichi NPS (T-B3)	February 18, 2013	ND	ND	ND
Sea bass (Muscle)	Around 10km Offshore of Fukushima Daiichi NPS (T-B3)	February 18, 2013	27	43	70
Microstoms achne (Muscle)	Around 10km Offshore of Fukushima Daiichi NPS (T-B3)	February 18, 2013	6.4	13	19.4
Takifugu pardalis (Muscle)	Around 10km Offshore of Fukushima Daiichi NPS (T-B3)	February 18, 2013	ND	ND	ND
Flatfish (Muscle)	Around 10km Offshore of Fukushima Daiichi NPS (T-B3)	February 18, 2013	16	32	48
Marbled sole (Muscle)	Around 10km Offshore of Fukushima Daiichi NPS (T-B3)	February 18, 2013	22	40	62

* When the measurement value is below the detection limit, "ND" is marked. The detection limits are as follows.

Cs-134: Approx. 4.1Bq/kg (Raw), Cs-137: Approx. 4.3Bq/kg (Raw)

As the detection limit may vary depending on the detectors and sample properties, there are cases where nuclides below the detection limit are detected.

* Standard Value (after April 1, 2012) Cs-134+Cs-137: 100Bq/kg

* Analyzed by Tokyo Electric Power Environmental Engineering Co., Inc.

Nuclide Analysis Results of Fish and Shellfish
(The Ocean Area Within 20km Radius of Fukushima Daiichi NPS) < 7/10 >

(Data summarized on March 15)

Name of Sample (Region)	Place of Sampling (Place No.)	Date of Sampling	Radioactivity Density [Bq/kg (Raw)] (Half-life)		
			Cs-134 (Approx. 2 years)	Cs-137 (Approx. 30 years)	Total
Pacific cod (Muscle)	Around 10km Offshore of Fukushima Daiichi NPS (T-B3)	February 18, 2013	14	26	40
Octopus dofleini (Muscle)	Around 10km Offshore of Fukushima Daiichi NPS (T-B3)	February 18, 2013	ND	ND	ND
Greenling (Muscle)	Around 10km Offshore of Fukushima Daini NPS (T-B4)	February 18, 2013	30	60	90
Northern dogfish (Muscle)	Around 10km Offshore of Fukushima Daini NPS (T-B4)	February 18, 2013	4.2	12	16.2
Andrea cuttlefish (Whole)	Around 10km Offshore of Fukushima Daini NPS (T-B4)	February 18, 2013	ND	ND	ND
Lepidotrigla microptera (Muscle)	Around 10km Offshore of Fukushima Daini NPS (T-B4)	February 18, 2013	ND	6.2	6.2
Schlegel's black rockfish (Muscle)	Around 10km Offshore of Fukushima Daini NPS (T-B4)	February 18, 2013	23	42	65
Common skete (Muscle)	Around 10km Offshore of Fukushima Daini NPS (T-B4)	February 18, 2013	56	120	176
Loliginid (Whole)	Around 10km Offshore of Fukushima Daini NPS (T-B4)	February 18, 2013	ND	ND	ND
Sea bass (Muscle)	Around 10km Offshore of Fukushima Daini NPS (T-B4)	February 18, 2013	ND	5.9	5.9

* When the measurement value is below the detection limit, "ND" is marked. The detection limits are as follows.

Cs-134: Approx. 4.3Bq/kg (Raw), Cs-137: Approx. 4.7Bq/kg (Raw)

As the detection limit may vary depending on the detectors and sample properties, there are cases where nuclides below the detection limit are detected.

* Standard Value (after April 1, 2012) Cs-134+Cs-137: 100Bq/kg

* Analyzed by Tokyo Electric Power Environmental Engineering Co., Inc.

Nuclide Analysis Results of Fish and Shellfish
(The Ocean Area Within 20km Radius of Fukushima Daiichi NPS) < 8/10 >

(Data summarized on March 15)

Name of Sample (Region)	Place of Sampling (Place No.)	Date of Sampling	Radioactivity Density [Bq/kg (Raw)] (Half-life)		
			Cs-134 (Approx. 2 years)	Cs-137 (Approx. 30 years)	Total
Takifugu pardalis (Muscle)	Around 10km Offshore of Fukushima Daini NPS (T-B4)	February 18, 2013	ND	8.5	8.5
Flatfish (Muscle)	Around 10km Offshore of Fukushima Daini NPS (T-B4)	February 18, 2013	13	32	45
Marbled sole (Muscle)	Around 10km Offshore of Fukushima Daini NPS (T-B4)	February 18, 2013	17	40	57
Pacific cod (Muscle)	Around 10km Offshore of Fukushima Daini NPS (T-B4)	February 18, 2013	12	23	35
Octopus dofleini (Muscle)	Around 10km Offshore of Fukushima Daini NPS (T-B4)	February 18, 2013	ND	ND	ND
Roundnose flounder (Muscle)	Around 10km Offshore of Fukushima Daini NPS (T-B4)	February 18, 2013	7.4	14	21.4
Ridged-eye flounder (Muscle)	Around 10km Offshore of Fukushima Daini NPS (T-B4)	February 18, 2013	6.0	9.2	15.2
Marbled sole (Muscle) No.1	In the Port of Fukushima Daiichi NPS (Around the Port Entrance)	February 19, 2013	230	520	750
Flathead (Platycephalus sp.) (Muscle) No.1	In the Port of Fukushima Daiichi NPS (Around the Port Entrance)	February 19, 2013	430	830	1260
Greenling (Muscle) No.1	In the Port of Fukushima Daiichi NPS (Around the Port Entrance)	February 20, 2013	360	670	1030

* When the measurement value is below the detection limit, "ND" is marked. The detection limits are as follows.

Cs-134: Approx. 4.2Bq/kg (Raw), Cs-137: Approx. 4.0Bq/kg (Raw)

As the detection limit may vary depending on the detectors and sample properties, there are cases where nuclides below the detection limit are detected.

* Standard Value (after April 1, 2012) Cs-134+Cs-137: 100Bq/kg

* Analyzed by Tokyo Electric Power Environmental Engineering Co., Inc.

Nuclide Analysis Results of Fish and Shellfish
(The Ocean Area Within 20km Radius of Fukushima Daiichi NPS) < 9/10 >

(Data summarized on March 15)

Name of Sample (Region)	Place of Sampling (Place No.)	Date of Sampling	Radioactivity Density [Bq/kg (Raw)] (Half-life)		
			Cs-134 (Approx. 2 years)	Cs-137 (Approx. 30 years)	Total
Sebastes cheni (Muscle) No.1	In the Port of Fukushima Daiichi NPS (Around the Port Entrance)	February 20, 2013	12000	23000	35000
Flathead (Platycephalus sp.) (Muscle) No.2	In the Port of Fukushima Daiichi NPS (Around the Port Entrance)	February 20, 2013	800	1500	2300
Spotbelly rockfish (Muscle)	In the Port of Fukushima Daiichi NPS (Around the Port Entrance)	February 20, 2013	53000	95000	148000
Sebastes cheni (Muscle) No.2	In the Port of Fukushima Daiichi NPS (Around the Port Entrance)	February 21, 2013	57000	100000	157000
Sebastes cheni (Muscle) No.3	In the Port of Fukushima Daiichi NPS (Around the Port Entrance)	February 21, 2013	14000	26000	40000
Marbled sole (Muscle) No.2	In the Port of Fukushima Daiichi NPS (Around the Port Entrance)	February 21, 2013	480	910	1390
Greenling (Muscle) No.2	In the Port of Fukushima Daiichi NPS (Around the Water Intake Open Conduit at Unit 1-4)	February 21, 2013	20000	36000	56000
Greenling (Muscle) No.3	In the Port of Fukushima Daiichi NPS (Around the Water Intake Open Conduit at Unit 1-4)	February 21, 2013	120000	220000	340000
Greenling (Muscle) No.4	In the Port of Fukushima Daiichi NPS (Around the Water Intake Open Conduit at Unit 1-4)	February 21, 2013	53000	97000	150000
Greenling (Muscle) No.5	In the Port of Fukushima Daiichi NPS (Around the Water Intake Open Conduit at Unit 1-4)	February 21, 2013	260000	480000	740000

* Standard Value (after April 1, 2012) Cs-134+Cs-137: 100Bq/kg

Nuclide Analysis Results of Fish and Shellfish
(The Ocean Area Within 20km Radius of Fukushima Daiichi NPS) < 10/10 >

(Data summarized on March 15)

Name of Sample (Region)	Place of Sampling (Place No.)	Date of Sampling	Radioactivity Density [Bq/kg (Raw)] (Half-life)		
			Cs-134 (Approx. 2 years)	Cs-137 (Approx. 30 years)	Total
Brown hakeling (Muscle) No.1	In the Port of Fukushima Daiichi NPS (Around the Water Intake Open Conduit at Unit 1-4)	February 21, 2013	9800	18000	27800
Brown hakeling (Muscle) No.2	In the Port of Fukushima Daiichi NPS (Around the Water Intake Open Conduit at Unit 1-4)	February 21, 2013	4000	7600	11600

* Standard Value (after April 1, 2012) Cs-134+Cs-137: 100Bq/kg

Fish Sampling Situation in the port of Fukushima Daiichi NPS (preliminary report)

1. Basket fishing

Date of Sampling	Place of Sampling	Number of sampling	Sampling of Highest Cesium Density (Place of Sampling)	Cesium Density (Unit: Bq/kg (Raw))		
				Cs-134	Cs-137	Cesium Amount
Oct 10, 2012	A	4	Common Japanese conger (A)	5,900	9,600	15,500
Dec 20, 2012	A,C	29	Spotbelly rockfish (A)	94,000	160,000	254,000
Jan 18, 2013	A,B,C,D	42	Spotbelly rockfish (B)	51,000	90,000	141,000
Jan 30, 2013	A,B,C,D	28	Spotbelly rockfish (B)	75,000	130,000	205,000
Feb 15, 2013	A,A',B,C,D	21	Spotbelly rockfish (A*)	97,000	180,000	277,000
Feb 21, 2013	E	6	Greenling (E*)	260,000	480,000	740,000
Feb 27, 2013	A,B,C,D	14		The samples are currently under radioactivity density measurements		
Mar 13, 2013	A,B,C,D	41				

* Sampled at inner side of Silt Fence

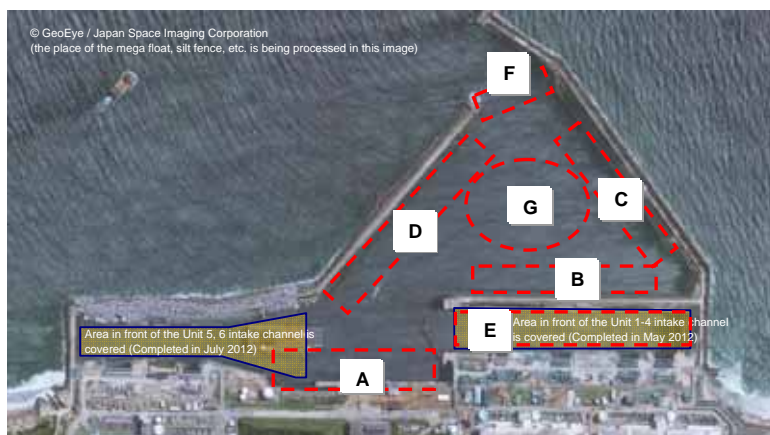
2. Gill net in the port entrance

Date of Sampling	Place of Sampling	Number of sampling	Sampling of Highest Cesium Density (Place of Sampling)	Cesium Density (Unit: Bq/kg (Raw))		
				Cs-134	Cs-137	Cesium Amount
Feb 12, 2013	F	154	Greenling	86,000	160,000	246,000
Feb 13, 2013	F	47	Spotbelly rockfish	55,000	99,000	154,000
Feb 15, 2013	F	17	Greenling	50,000	90,000	140,000
Feb 16, 2013	F	8	Sebastes cheni	30,000	55,000	85,000
Feb 17, 2013	F	6	Greenling	180,000	330,000	510,000
Feb 19, 2013	F	2	Flathead (Platycephalus sp.)	430	830	1,260
Feb 20, 2013	F	5	Spotbelly rockfish	53,000	95,000	148,000
Feb 21, 2013	F	3	Sebastes cheni	57,000	100,000	157,000
Feb 22, 2013	F	44		The samples are currently under radioactivity density measurements		
Feb 25, 2013	F	11				
Feb 26, 2013	F	7				
Feb 28, 2013	F	3				
Mar 1, 2013	F	5				
Mar 4, 2013	F	14				
Mar 5, 2013	F	7				
Mar 6, 2013	F	23				
Mar 7, 2013	F	18				
Mar 8, 2013	F	12				
Mar 9, 2013	F	8				
Mar 12, 2013	F	18				

3. Gill net fishing in the port entrance

Date of Sampling	Place of Sampling	Number of sampling	Sampling of Highest Cesium Density (Place of Sampling)	Cesium Density (Unit: Bq/kg (Raw))		
				Cs-134	Cs-137	Cesium Amount
Mar 8, 2013	C	4		The samples are currently under radioactivity density measurements		
Mar 13, 2013	A,B,D	5				

Total amount of sampling	601
--------------------------	-----



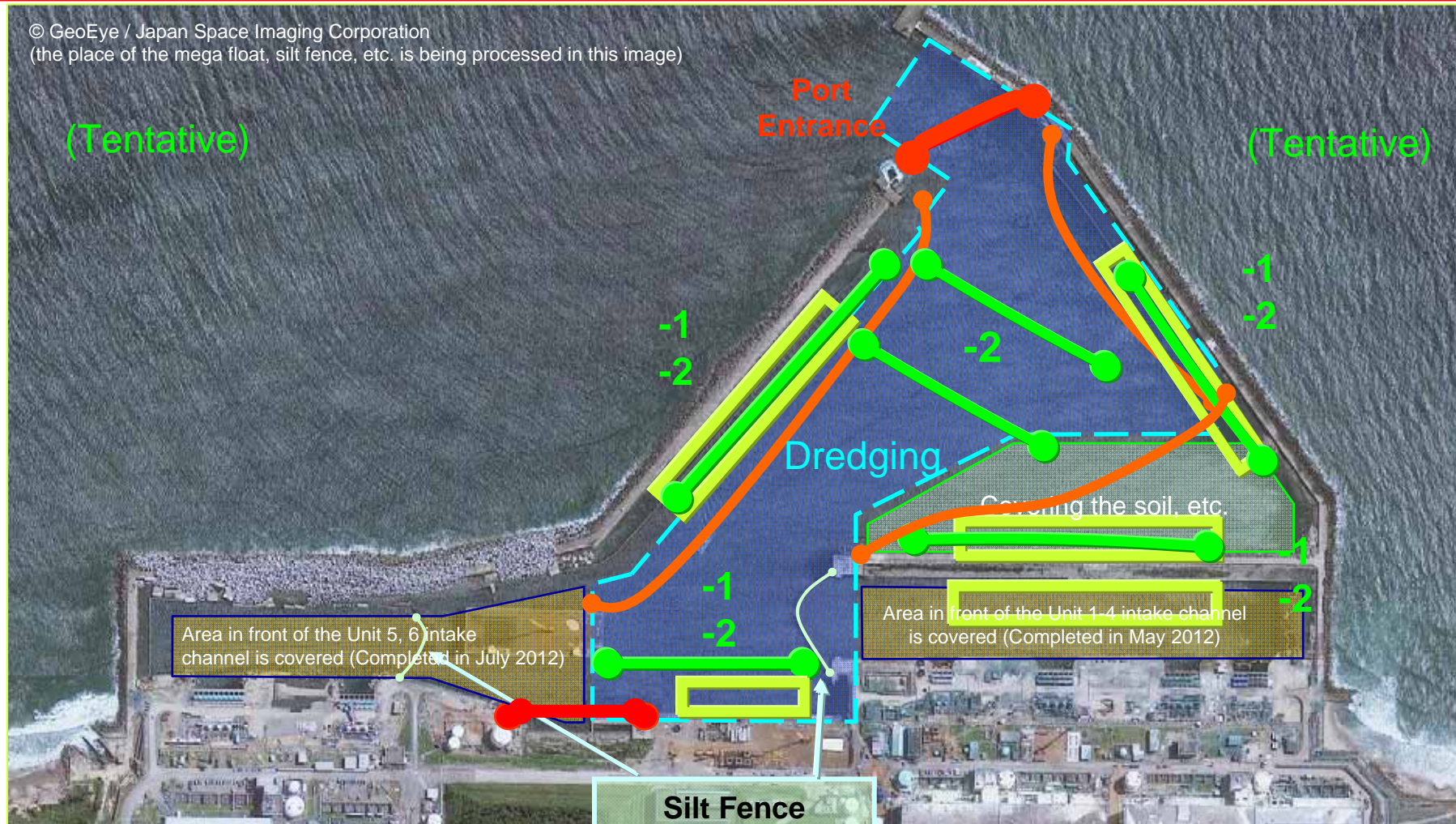
A: Around the Shallow Draft Quay
 B: Around the East Seawall Break
 C: Around the South Breakwater
 D: Around the North Breakwater
 E: Around the Water Intake Open Conduit at Unit 1-4
 F: Around the Port Entrance
 G: Around the Center of the Port

Figure. Place of Sampling

- (1) Since Feb 8, 2013, silt fence has been installed at point A, and gill net has been installed at point F.
- (2) Since Feb 27, 2013, gill nets have been installed continuously at inner side of silt fence at point A and point B.
- (3) Since Mar 5, 2013, 35 baskets have been installed continuously at point E. Since Mar 13, 15 baskets have been added continuously at point E.
- (4) On Mar 7-8, 2013, gill net fishing was conducted at point C.
- (5) On Mar 12-13, 2013, gill net fishing was conducted at point A,B,D. Also, basket fishing was conducted at point A,B,C,D.
- (6) On Mar 15-16, 2013, gill net fishing will be conducted at point G.

* As for the report previously announced on March 15, 2013, we have added the data obtained on March 9, 2013 at "2. Gill net in the port entrance" on March 18, 2013.

Outline Process (Draft) of the Countermeasures for Fish in the Port at Fukushima Daiichi NPS



Preventing fish from moving out
Sampling (extermination) of fish

-1: Basket fishing -2: Gill net in the port entrance

Improving environment of the marine soil in the port (dredging)

		FY 2012						FY 2013							
		10	11	12	1	2	3	4	5	6	7	8	9	10	11
Overall Schedule		Sampling (extermination) of fish, Preventing fish from moving to outside the port of Fukushima Daiichi NPS, etc. (Trend monitoring the number and the radioactivity level of fish and review the countermeasures accordingly.)													
1	Preventing fish from moving out														
	<Placement of gill net at the port entrance of Fukushima Daiichi NPS>														
	<Placement of block fence at port entrance (permanent installation)>														
	<Placement of partition net inside the embankment>														
	<Placement of silt fence and gill net at shallow draft quay>														
2	Sampling (extermination) of fish														
	<Basket fishing> ①-1 5 sampling points (Shallow draft quay, south and north breakwater, east seawall bank, in the Water Intake Open Conduit at Unit 1-4)	● (1 point)	● (2 points)												
	<Gill net fishing> ②-2 In the port of Fukushima Daiichi NPS														
	<Gill net fishing> 2 points in north and south sea area outside the port of Fukushima Daiichi NPS														
3	Improving environment of the marine soil in the port														
	<Dredging the ocean lane and the anchorage>														

Ongoing since February 8

Construction of fence | Installation of fence scheduled in mid-July

Arrangement of the net | Construction to place the net | Preventing fish from moving by partition net

Installation of silt fence since February 8 | Installation of gill net since February 27

Around 3 times a month

Ongoing sequentially since February 27

(Under discussion toward implement)

*

* Under consideration toward early launch