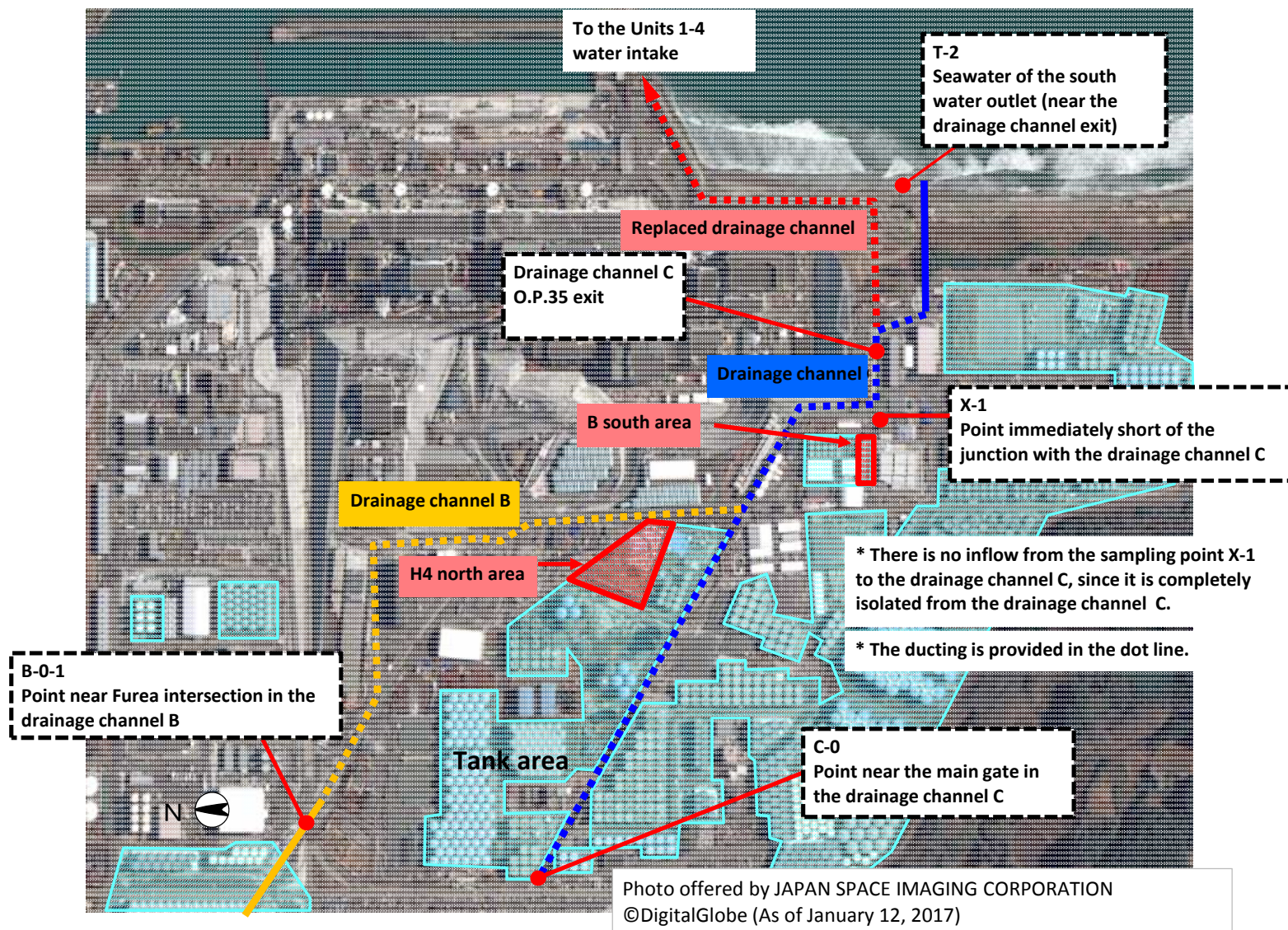


Sampling points of the water leak at the tanks in the H4 area in Fukushima Daiichi Nuclear Power Station (South water outlet, drainage channel)



<Reference> YY/MM/DD

Tokyo Electric Power Company Holdings,
Fukushima Daiichi D & D Engineering Company

Sampling Results Regarding the Water Leak at the Tanks in the H4 area in Fukushima Daiichi Nuclear Power Station (South Water Outlet, Drainage Channel)

Unit: Bq/L

	Seawater of the south water outlet ^{Note1} (near the drainage channel exit) (T-2)	Switched drainage channel C OP.35 exit (C-2-1)	Point near the main gate in the drainage channel C ^{Note 2} (C-0)	Point near Fureai Intersection in the drainage channel B ^{Note 2} (B-0-1)	Side ditch next to the tank (point immediately short of the junction with the drainage channel C) (X-1)
Date of Sampling (MM/DD)					
Time of sampling					
Cs-134 (Approx. 2 years)					
Cs-137 (Approx.30 years)					
Gross β					

Note 1: Approx. 330m south of Unit 1-4 water outlets (T-2)

Note 2: Water inflow location of drainage channel to the tank area

*A hyphen, "-", indicates that the particle is out of range

* "ND"s indicate that the measurement results are below the detection limits, and the detection limit of each nuclide is provided in parentheses.

<Reference> The Highest Dose Until the Previous Measurement (South Water Outlet, Drainage Channel)

Unit : Bq/L

	Seawater of the south water outlet ^{Note1} (near the drainage channel exit) (T-2)	Switched drainage channel C OP.35 exit (C-2-1)	Point near the main gate in the drainage channel C ^{Note2} (C-0)
Cs-134 (Approx. 2 years)			
Cs-137 (Approx.30 years)			
Gross β			

	Point near Fureai Intersection in the drainage channel B ^{Note2} (B-0-1)	Side ditch next to the tank (point immediately short of the junction with the drainage channel C) (X-1)
Cs-134 (Approx. 2 years)		
Cs-137 (Approx.30 years)		
Gross β		

* The sampling date is provided in parentheses.

[]: 2013, < >: 2014, 【 】: 2015年, < >: 2016, << >>: 2017