

< Reference >

Results of Soundness Inspection of Unit 2 TIP Guide Pipe (4th Day)

July 11, 2013

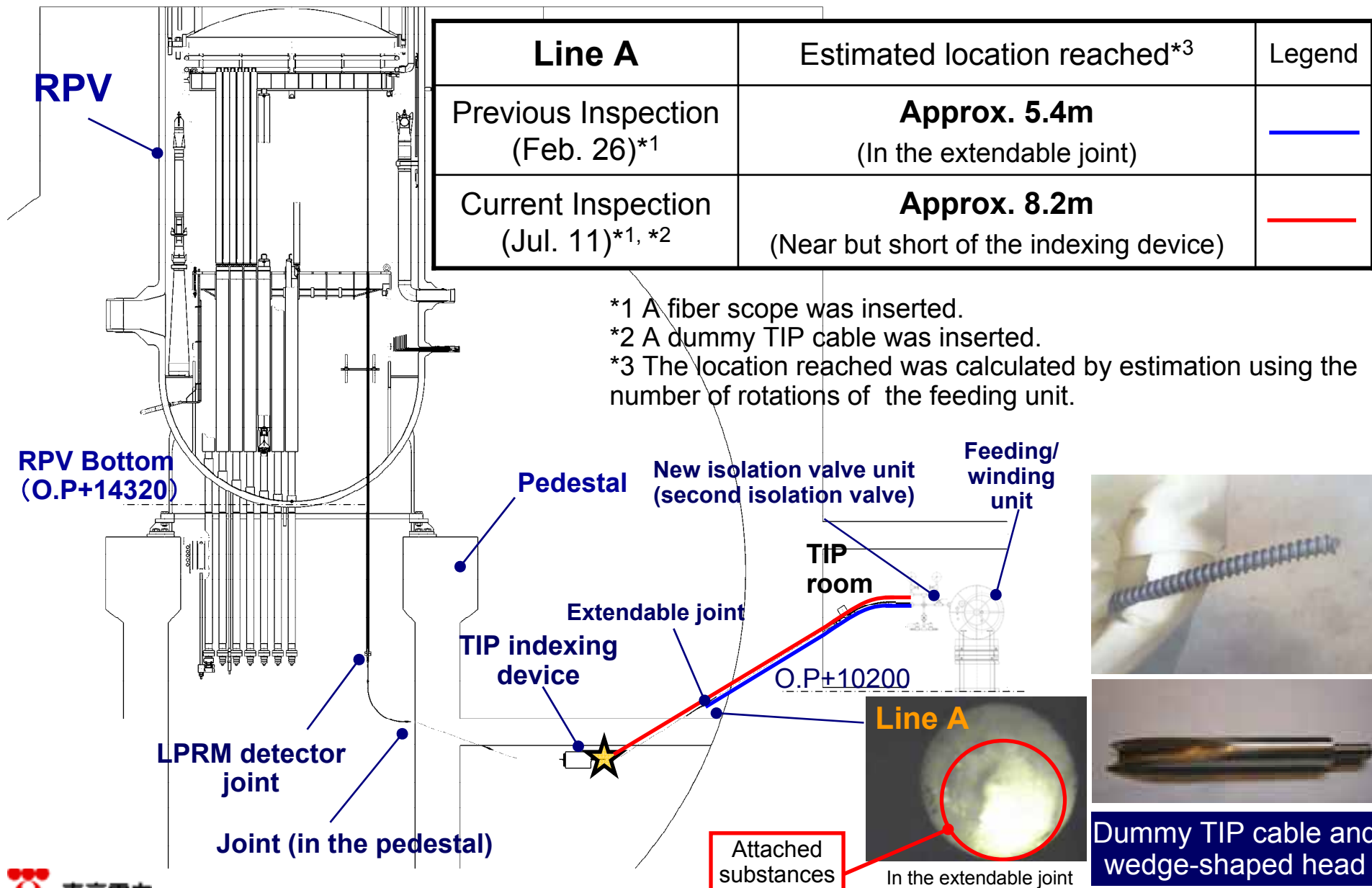
Tokyo Electric Power Company



東京電力

TEPCO

1-1. Contents of Work



1-2. Conditions of the Guide Pipe Interior (Photo)

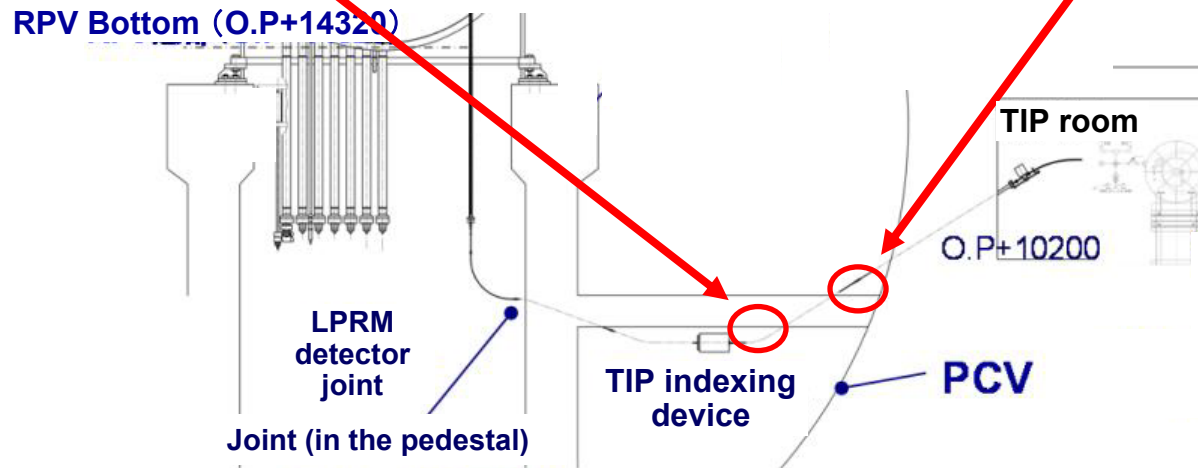


At the location near but short of the indexing device



Near the location reached previously

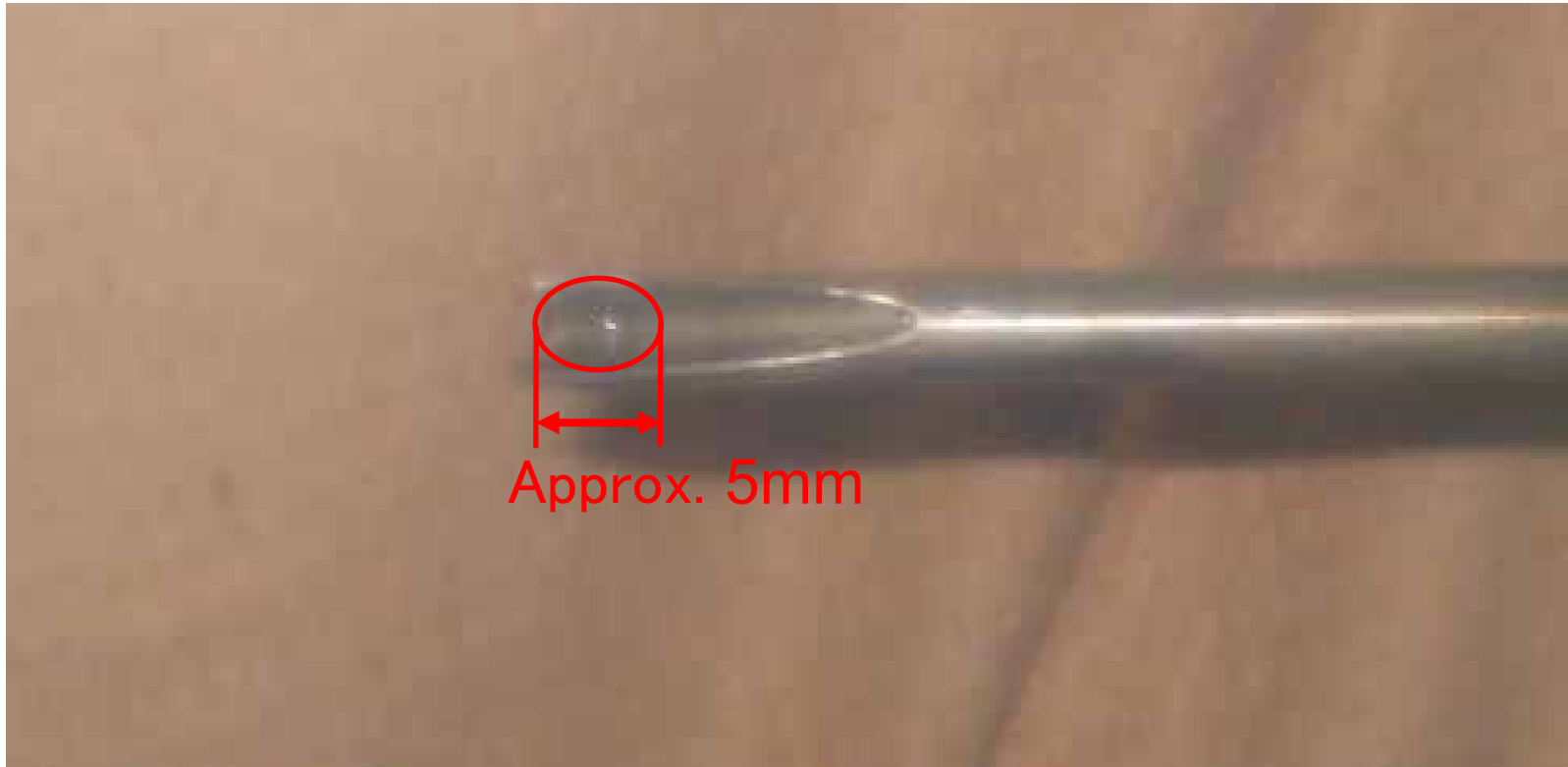
Attached substances



1-3. Conditions of Attached Substances (Photo)

3

■ Dummy TIP cable head



- After the dummy TIP cable was pulled out, attached substances were found on the head.
 γ -ray: 17.0mSv/h, β - and γ -rays: 45.0mSv/h

- Radiation exposure received by workers
Highest dose: 0.77mSV (Planned dose: 3mSV)

■ Results

- The dummy TIP cable was inserted and reached approx. 8.2m from the second isolation valve inlet flange of Line A. Further insertion of the cable became impossible at a location near but short of the indexing device.
- After the dummy TIP cable was pulled out, attached substances were found on the head.
(γ -ray: 17.0mSv/h, β - and γ -rays: 45.0mSv/h)
- Inspection of Line A was completed.

■ Next steps

- We will study the inspection results of the respective lines and decide on our next course of actions.