

Measures to Prevent Fish From Moving to Outside the Port Which were Already Implemented at Fukushima Daiichi Nuclear Power Station (As of July 12, 2013)

<Reference>
July 12, 2013
Tokyo Electric Power Company

1. Measures which were added this time



On July 11, installation of block fence at the port entrance was completed.
(Photo: Installation work of the block fence)



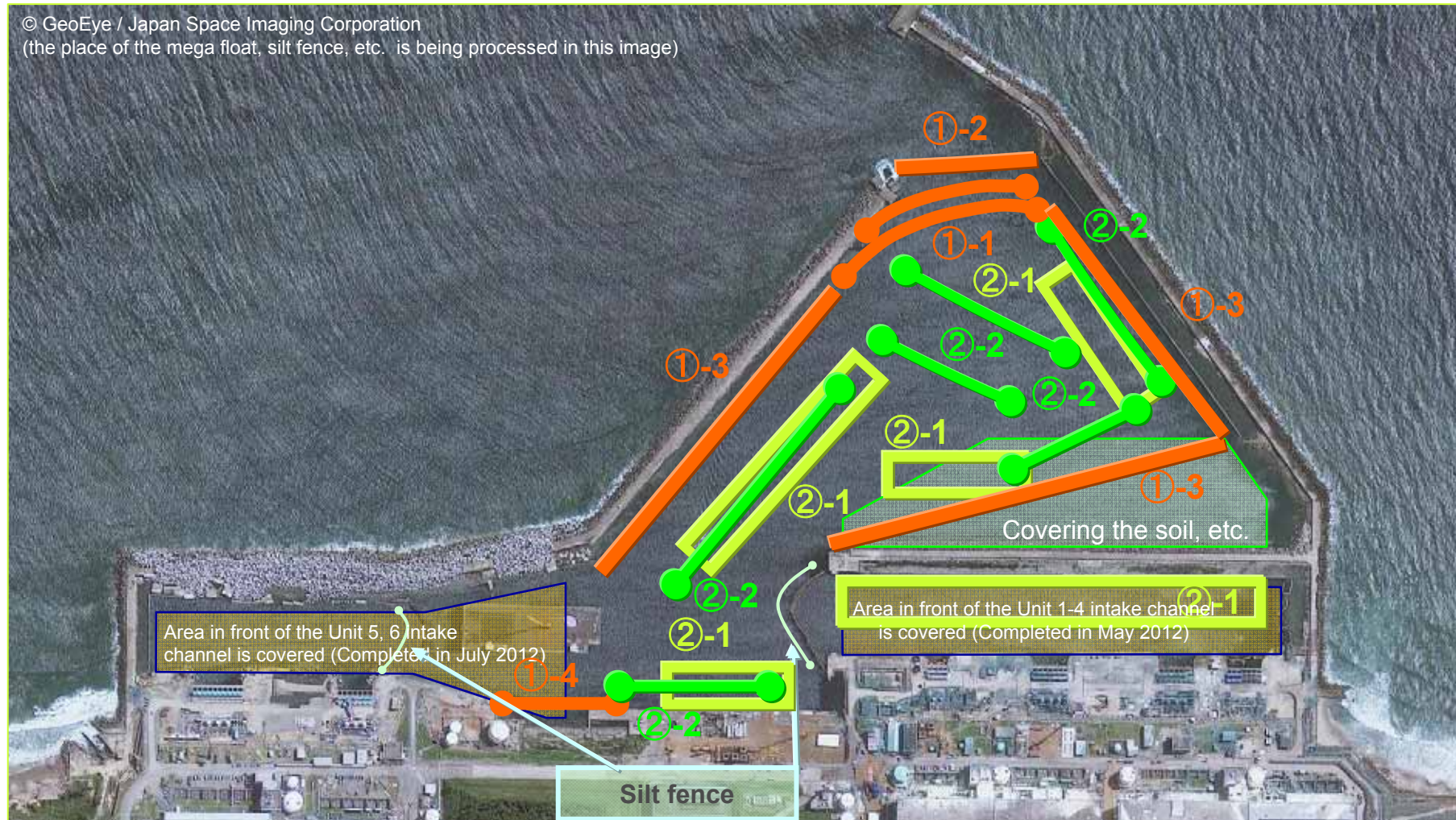
On June 26, installation of partition net around the north breakwater was completed.



On June 26, installation of partition net around the south breakwater was completed.

* All photos are taken on July 7.

2. Measures which were already implemented



① Preventing fish from moving out


①-1: Installation of gill net at the port entrance

①-2: Installation of block fence at the port entrance

①-3: Installation of partition net inside the breakwater

①-4: Installation of silt fence and gill net at shallow draft quay

② Sampling of fish

②-1: Basket fishing  ②-2: Gill net in the port 