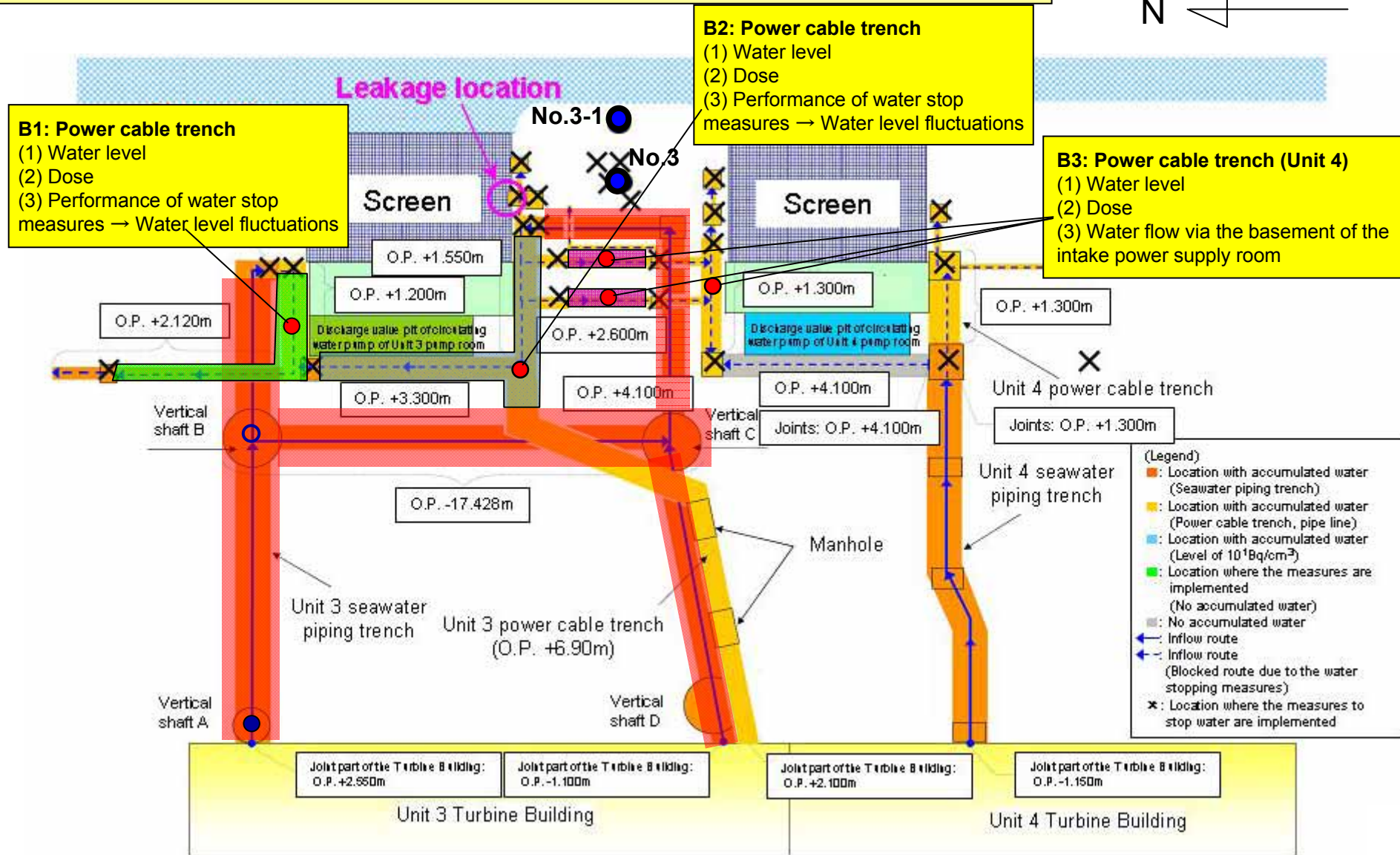


Investigation of Unit 3, 4 Seaside Trench at Fukushima Daiichi Nuclear Power Station

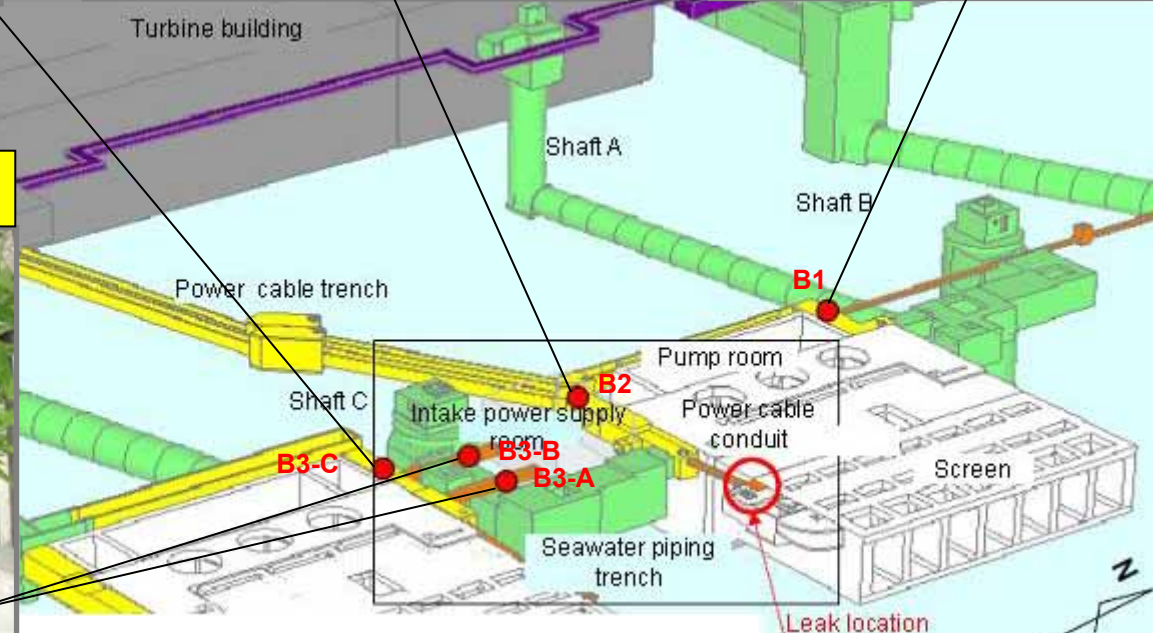
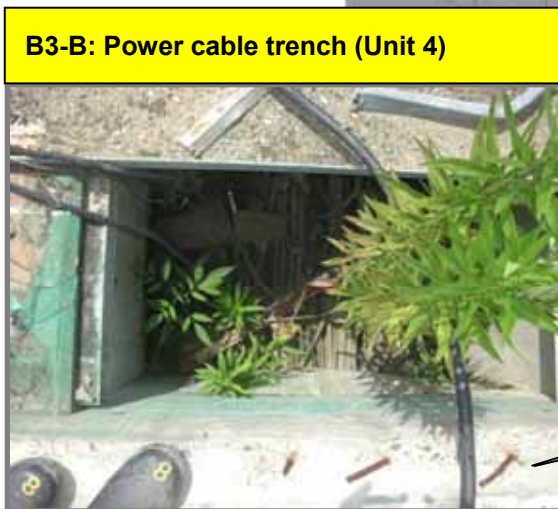
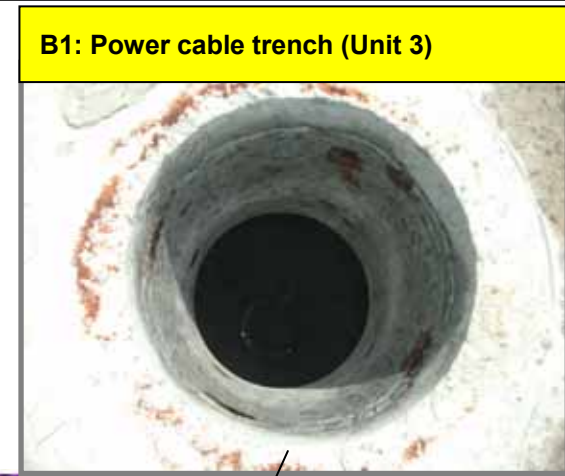
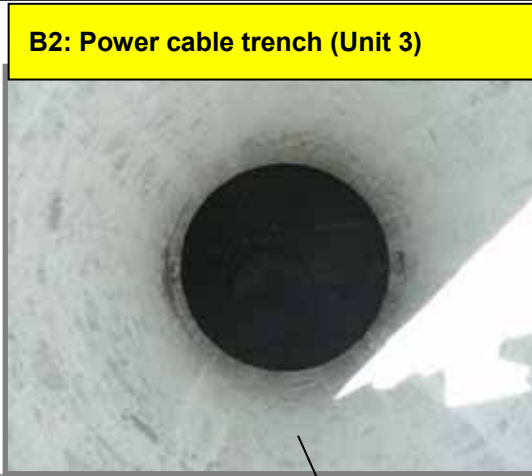
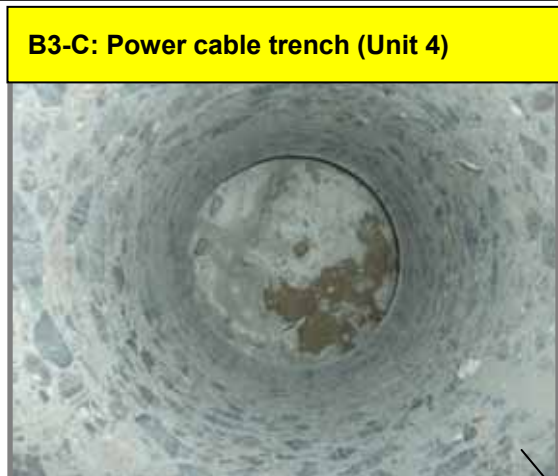
<Reference>
August 13, 2013
Tokyo Electric Power Company

Investigation will be implemented by the categories of water stop areas.



[Investigation Result at the Site]

- No water which seems to be the accumulated water was found at all areas of B1 to B3.
- Dose at the site was almost the same level (1.5 - 2mSv/h) or slightly higher (B2: 5mSv/h) than the surrounding area.
- Sediment is filled inside B3-A, B3-B, and mortar is filled inside B3-C.



* B3-A is the same situation as B3-B.

Photo taken by TEPCO on August 13, 2013