

**Investigation Results of Groundwater Inflow at
Unit 1 Turbine Building and the Miscellaneous
Solid Waste Volume Reduction Treatment Building
(High Temperature Incinerator Building) in
Fukushima Daiichi Nuclear Power Station**

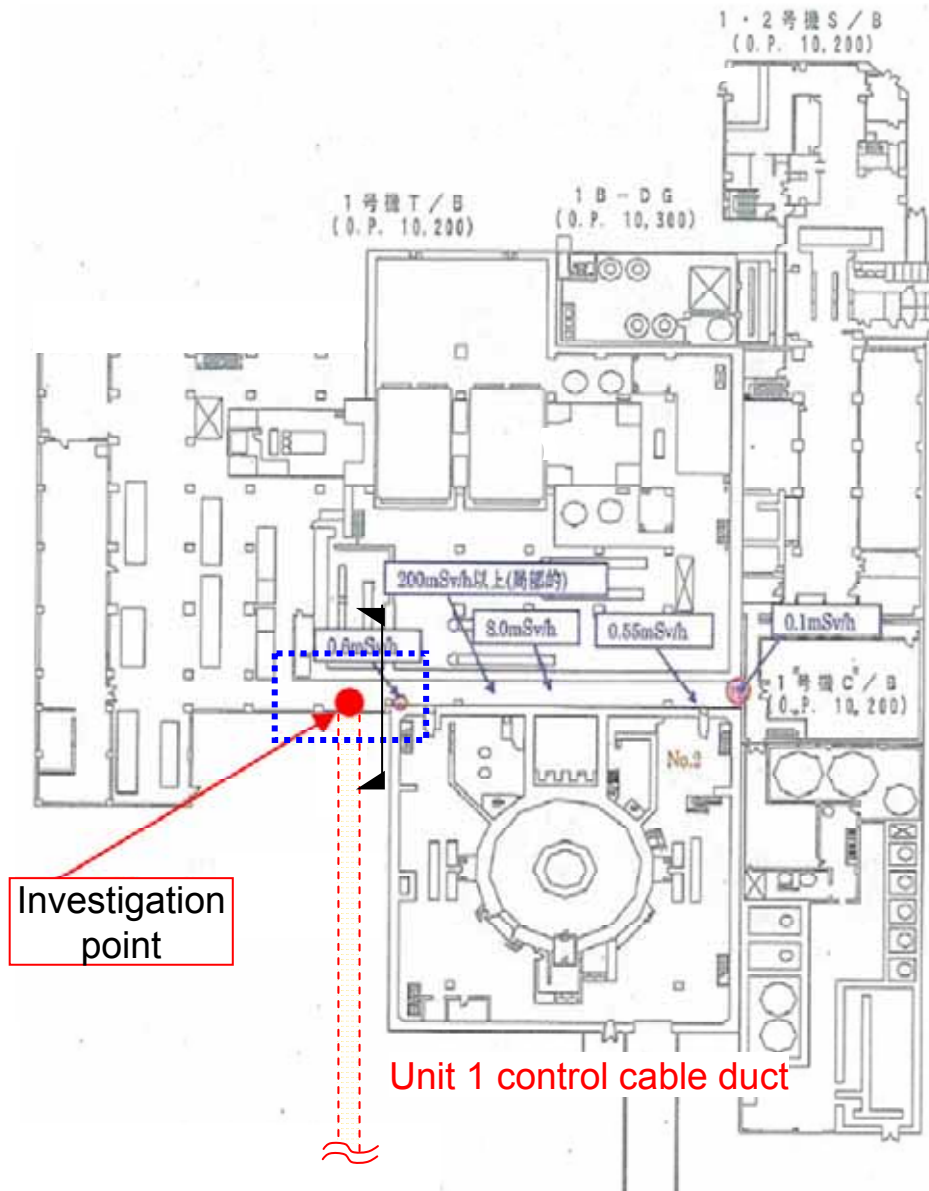
September 4, 2013

Tokyo Electric Power Company

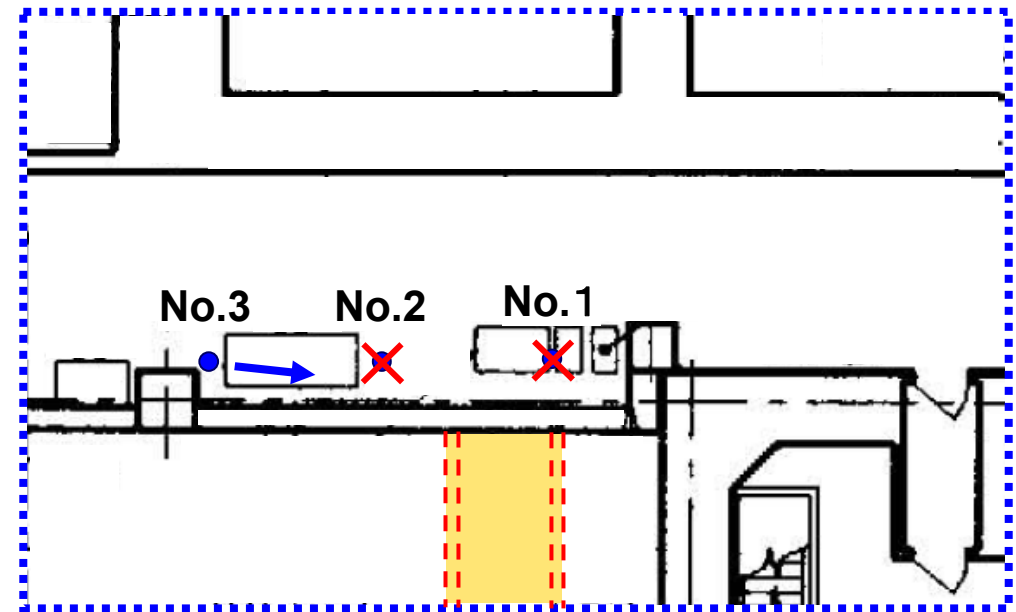
Overview of the Investigation Results

- **As a result of inspection using a camera by making a hole in the floor around the joint part of a duct, inflow of groundwater was found at Unit 1 Turbine Building (T/B) and the Miscellaneous Solid Waste Volume Reduction Treatment Building (High Temperature Incinerator Building: HTI Building).**
- **We will continue investigation in order to identify the detailed inflow location and amount.**
- **In parallel with such process, water stop method is being considered, and water stop construction will be started soon after it is ready.**

Investigation Results of Groundwater Inflow at Unit 1 T/B (1/2)



Plane view of the first floor of Unit 1

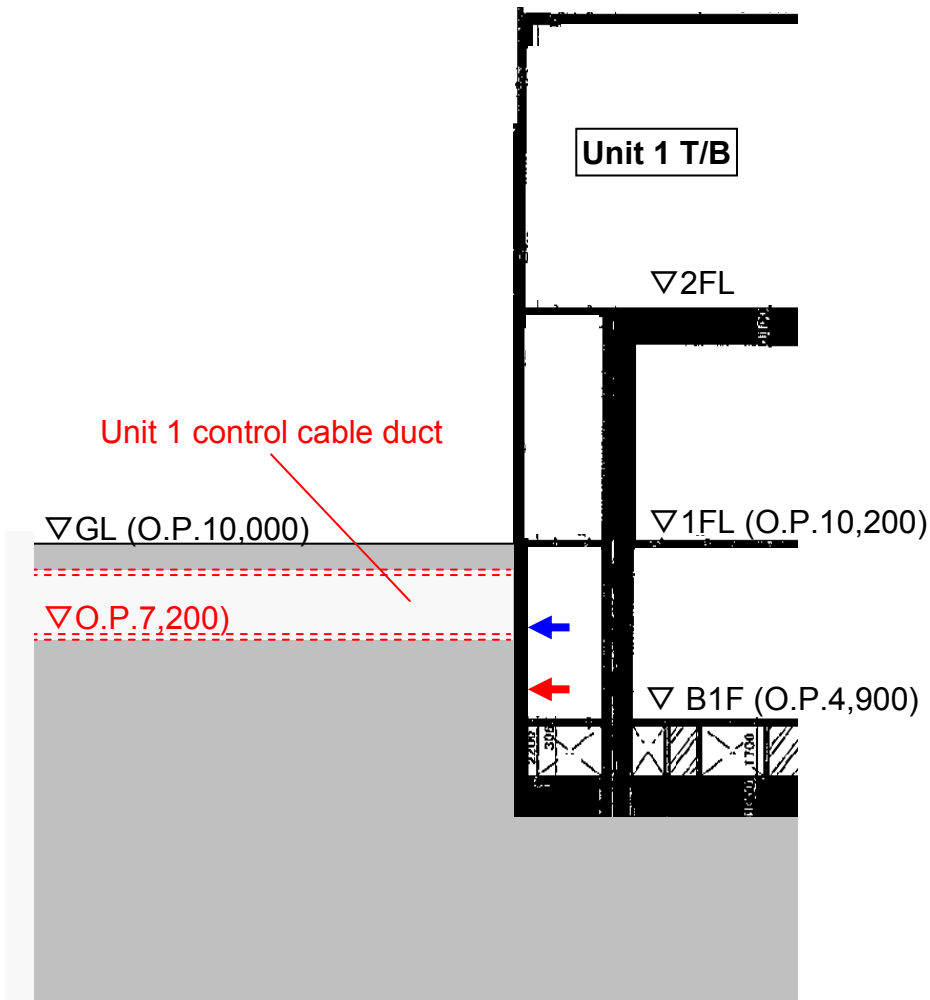


Plane view of the first floor of Unit 1 (enlarged image)

On August 30, 2013, water inflow was found by inserting a camera in the observation point No.3.

(We could not check the observation point No.1 and No.2 due to the interference with pipe.)

Investigation Results of Groundwater Inflow at Unit 1 T/B (2/2)



Cross sectional view of Unit 1 T/B
(enlarged image)

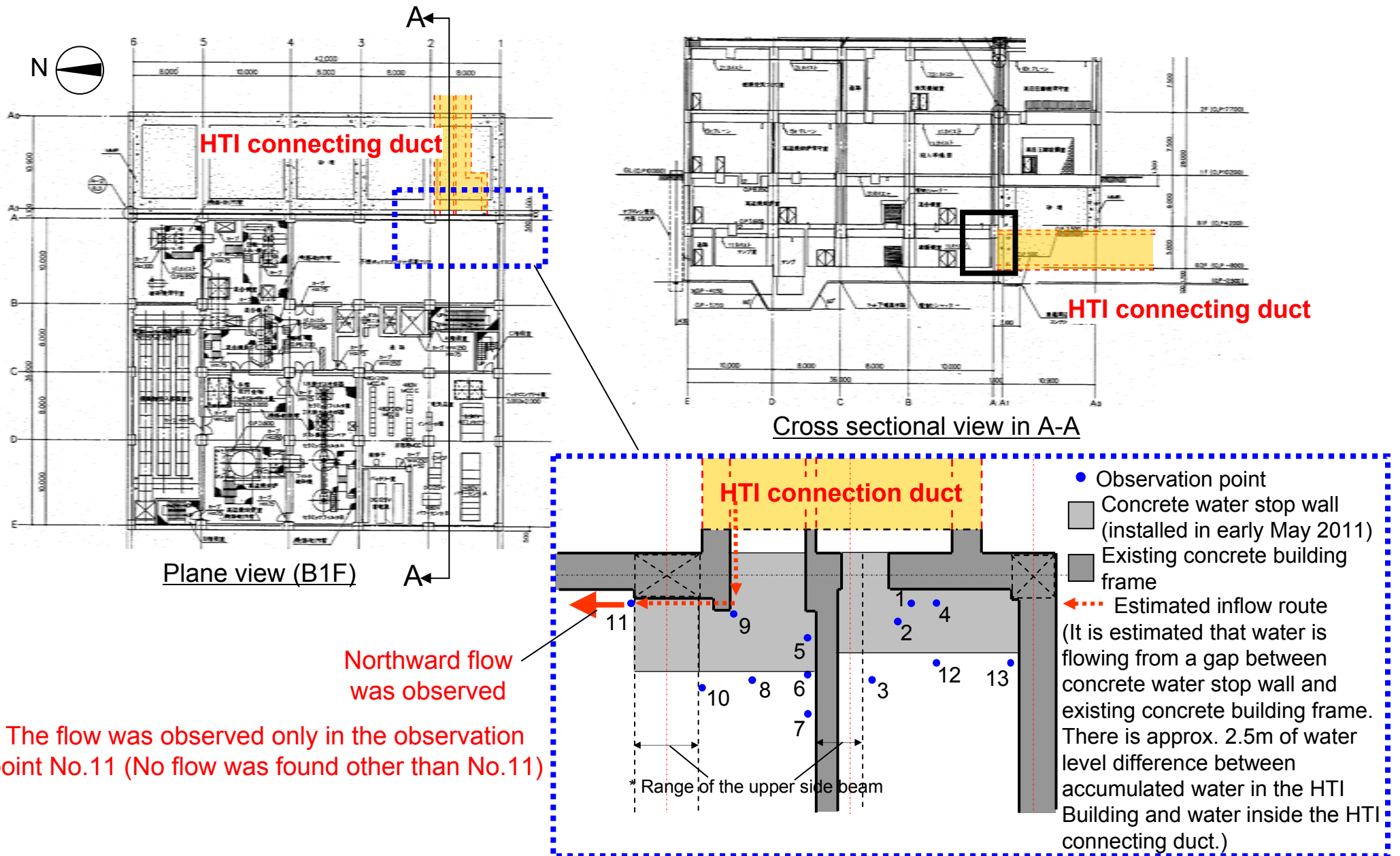


Around OP.7,200: We could not check due to the interference with obstacle

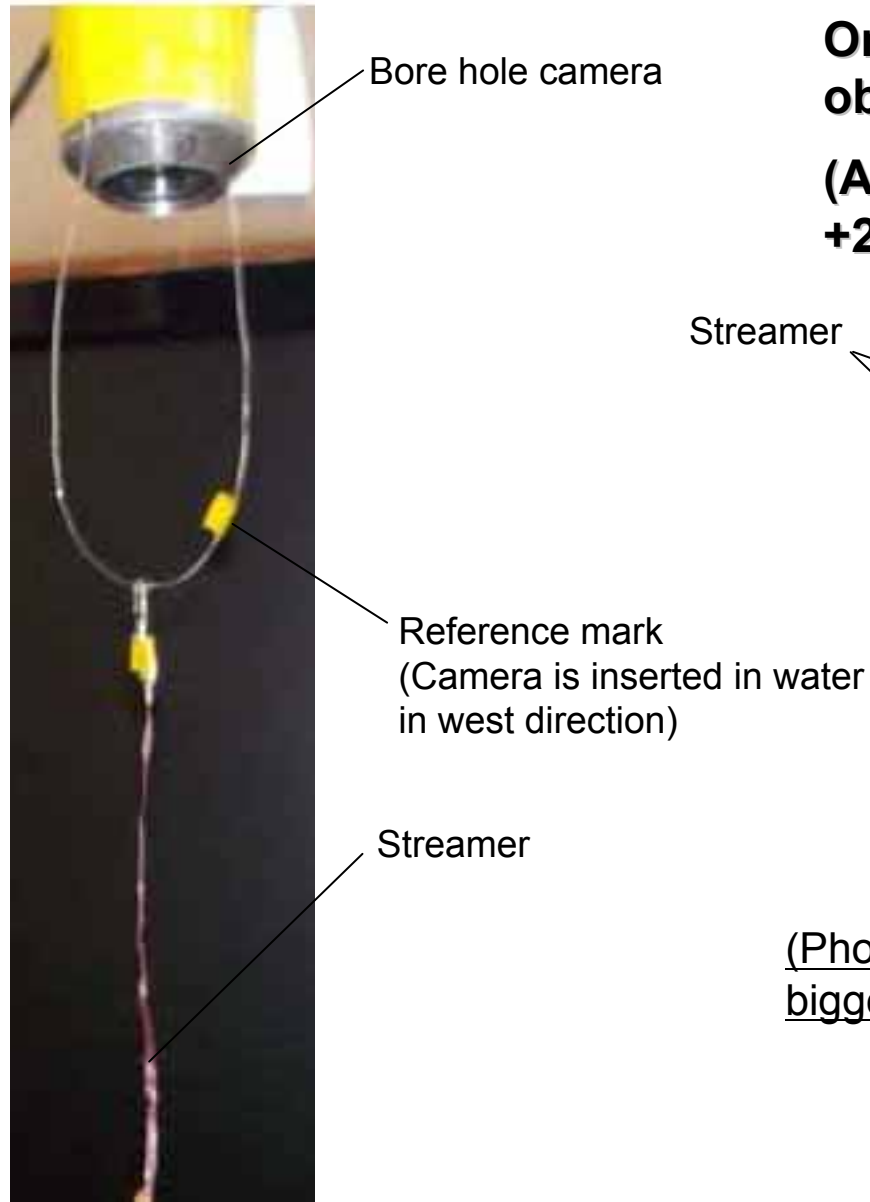


Around OP.5,900: We found that water was dropping from the upper part

Investigation Results of Groundwater Inflow at HTI Building (1/2)

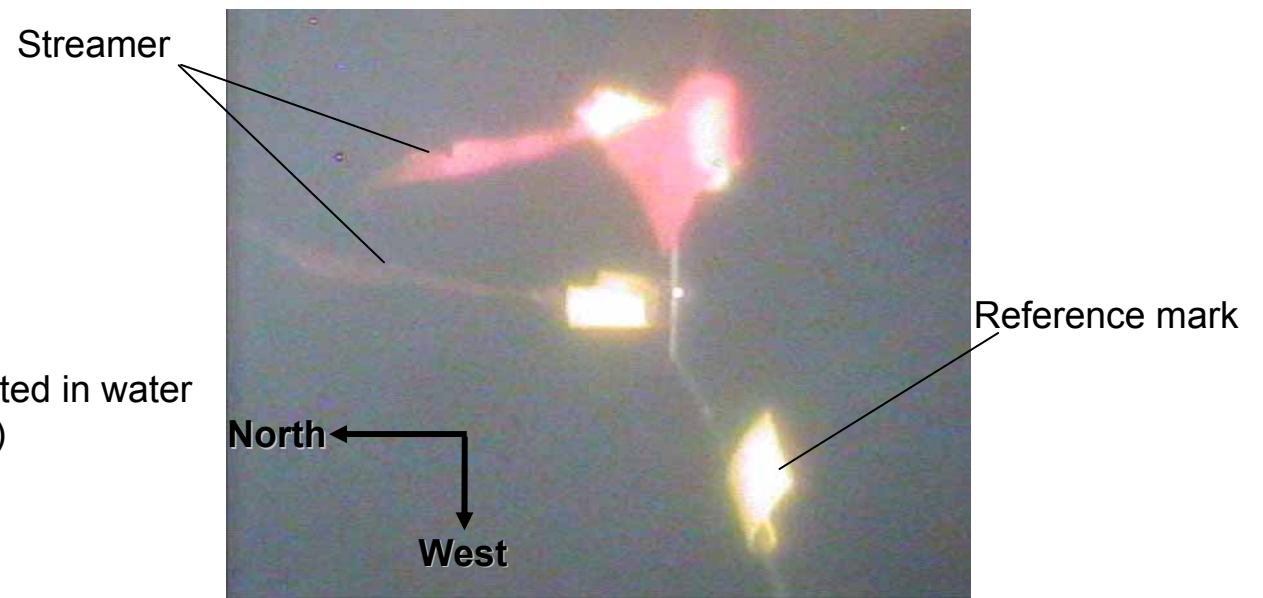


Investigation Results of Groundwater Inflow at HTI Building (2/2)



On August 20, 2013, northward flow was observed at the observation point No.11.

(Altitude was within the range of +1,000 to +2,000 from the floor of B2F)



(Photo) Altitude which movement of the streamer was the biggest: Approx. +1,500 from the floor of B2F