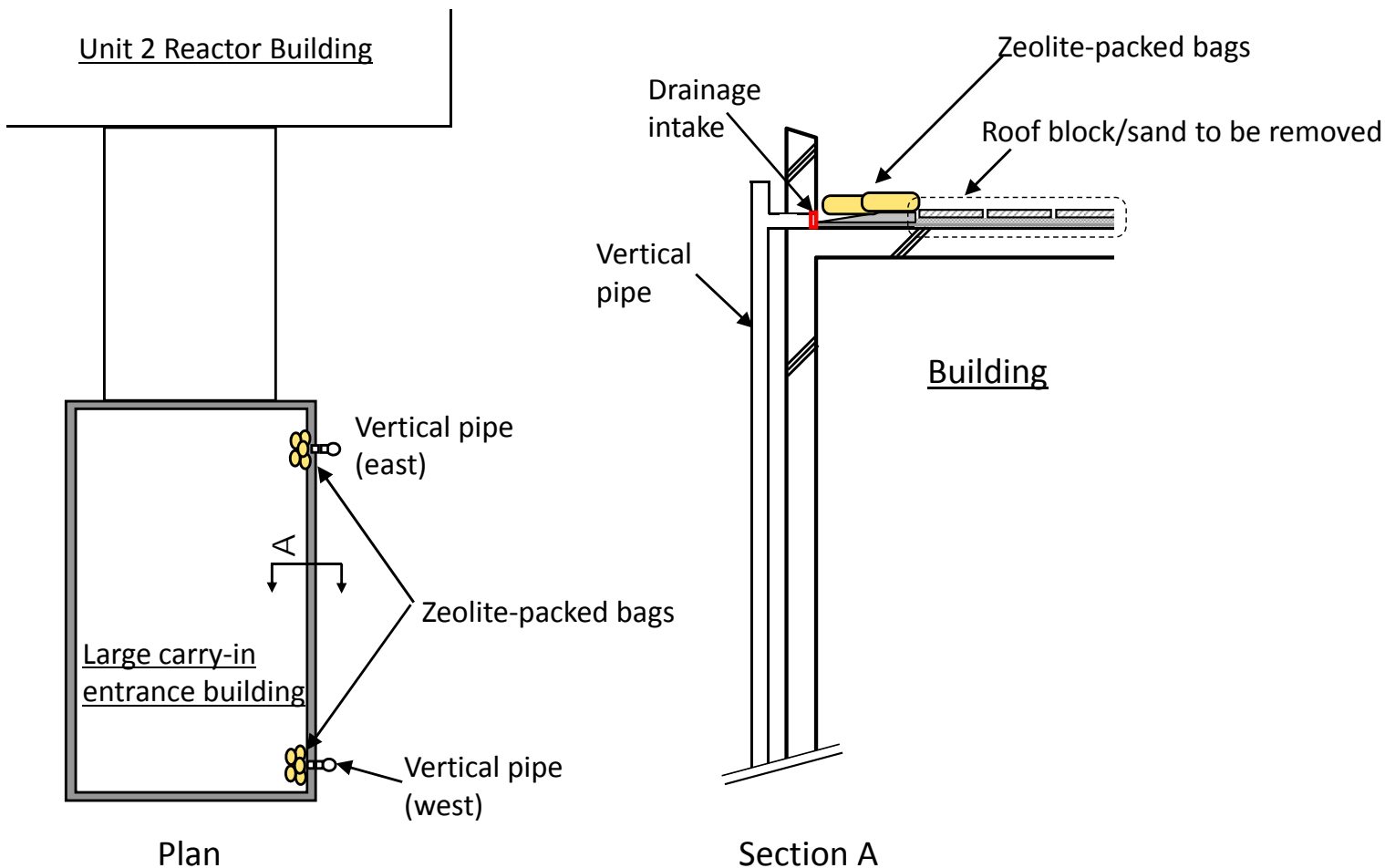


Progress of placing zeolite-packed bags on the rooftop of Unit 2 large carry-in entrance building (Feb.27)

- On Feb 27, 2015, zeolite-packed bags were placed in front of the two drainage intakes on the rooftop of Unit 2 large carry-in entrance building (a 2 floor building)
- The zeolite-packed bag works as a filter in front of the drainage intake, filtering radioactive materials from rainwater.
- As the effect is limited, fundamental measures such as removal of the radiation source will be conducted.



Before

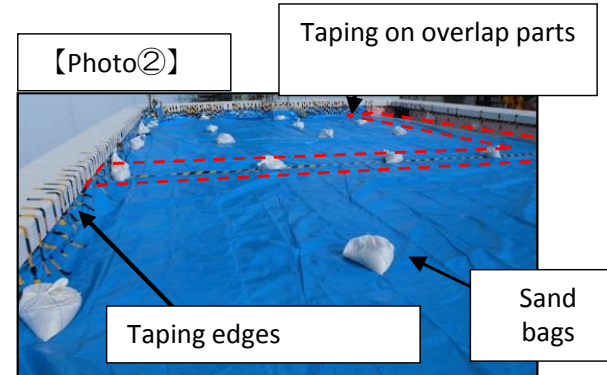
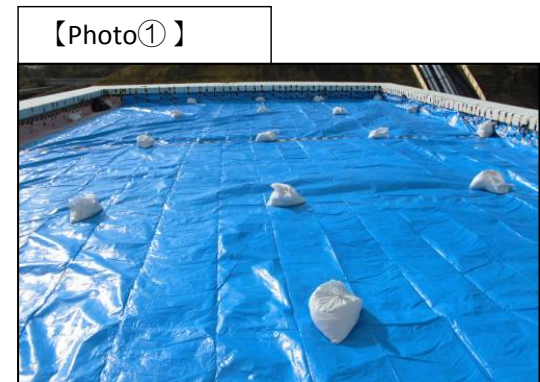
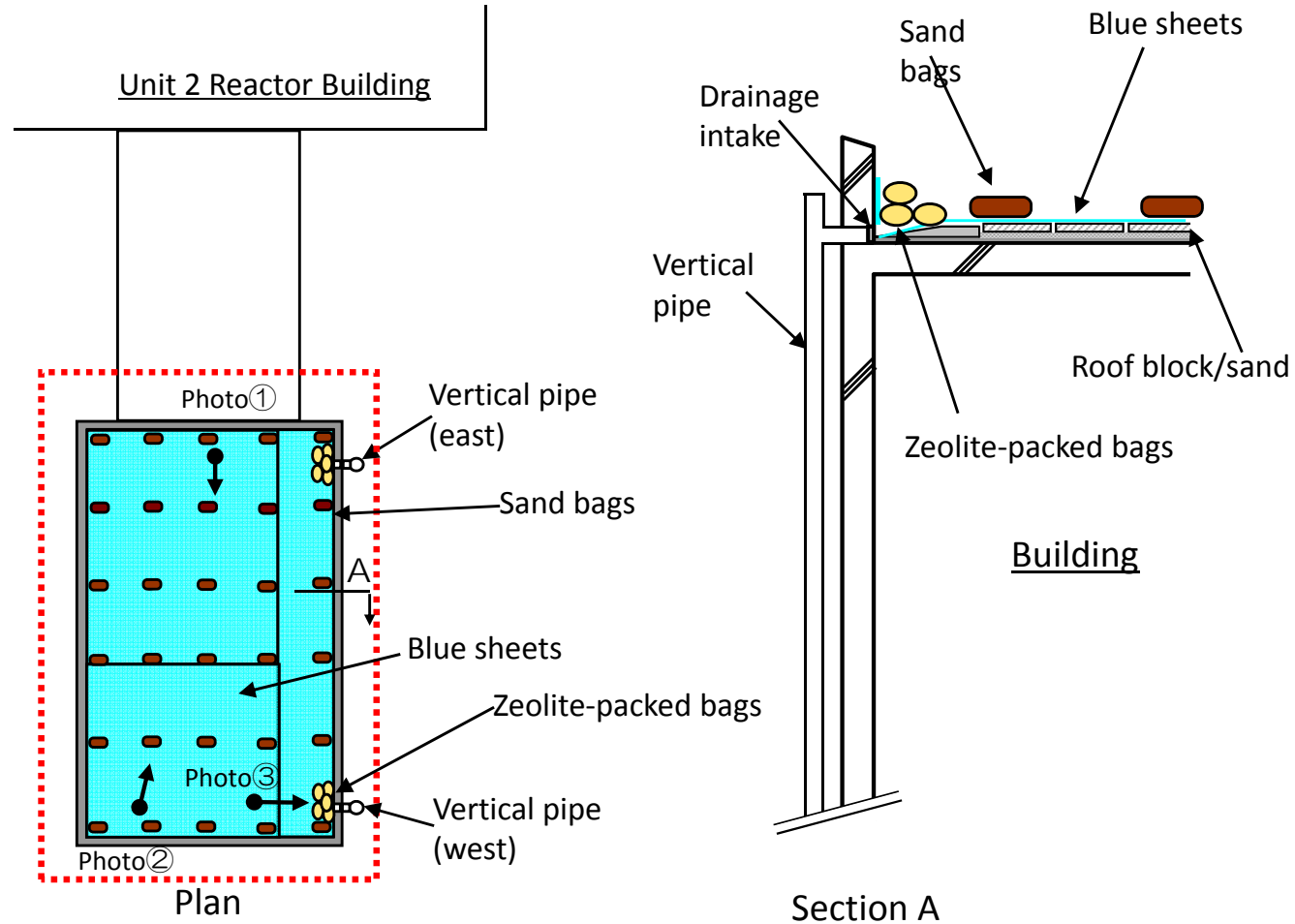


After

Progress of placing blue sheets on the rooftop of Unit 2 large carry-in entrance building (Mar. 2)

■ On March 2, 2015, blue sheets were placed on the rooftop of Unit 2 carry-in entrance building for preventing rainwater from touching the surface of the roof blocks and creating a contaminated puddle before flowing to the drainage intake

Legend  Place where prevention measures were conducted



Blue sheet placing work