

<Reference>

“Development of a technology to investigate inside the Reactor Primary Containment Vessel (PCV)”

- Site test “Investigation B1” on grating around the pedestal inside Unit 1 PCV -

[Prompt report for April 15, 2015]

April 16, 2015
Tokyo Electric Power
Company

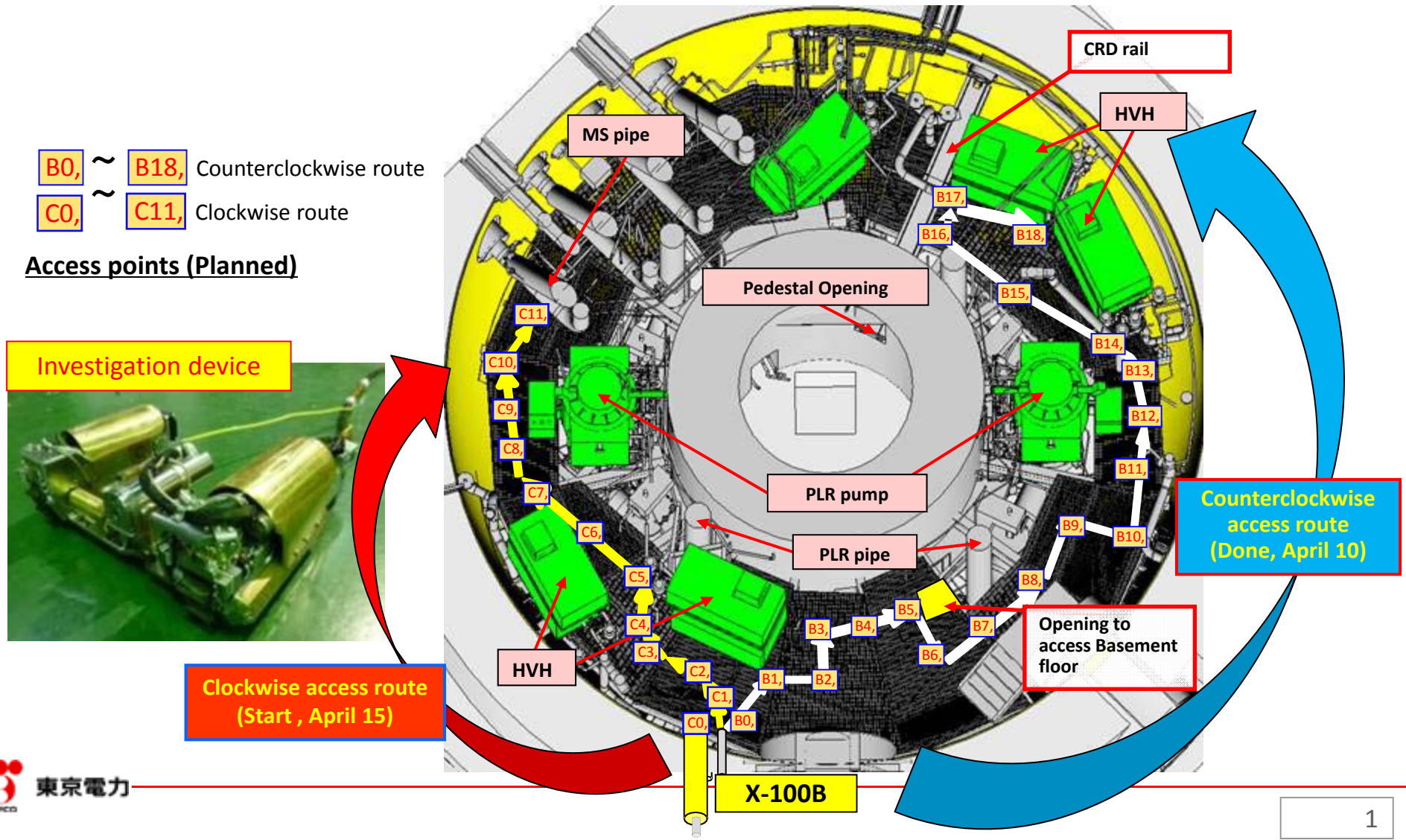


IRID

The content of this material includes the output of the International Research Institute for Nuclear Decommissioning (IRID)

1. Investigation scope

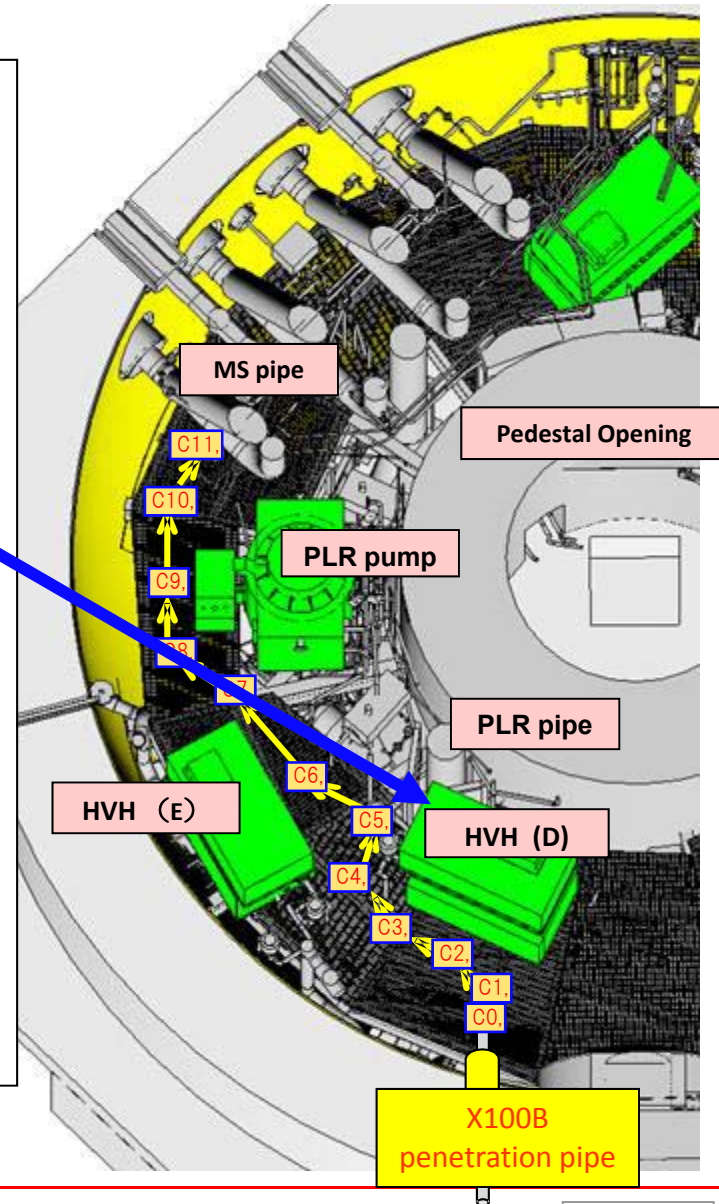
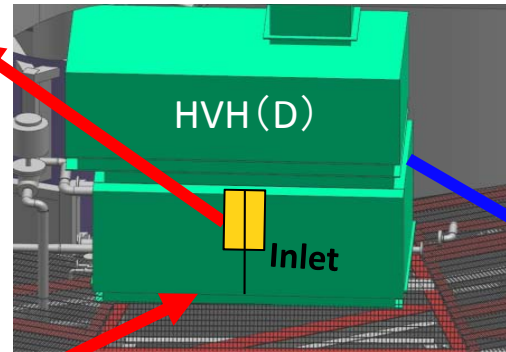
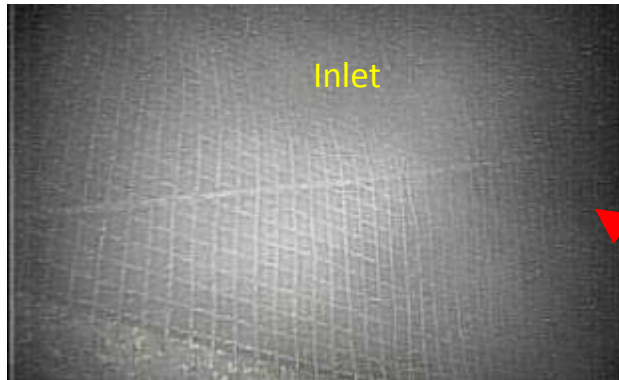
Purpose: For Unit 1, conduct an investigation in order to collect information on “the 1st floor grating inside the Primary Containment Vessel (PCV)” from the robot inserted through X-100B penetration pipe.



2-1. Images obtained along the clockwise route (HVH* (D))

C2

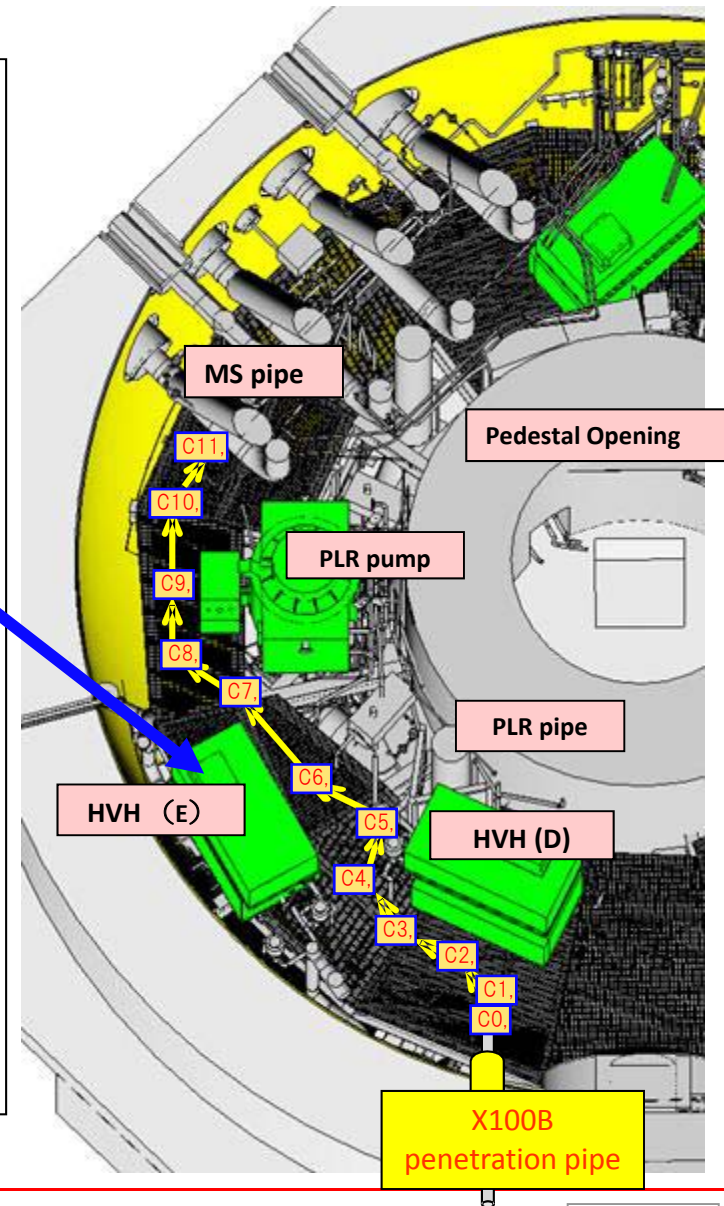
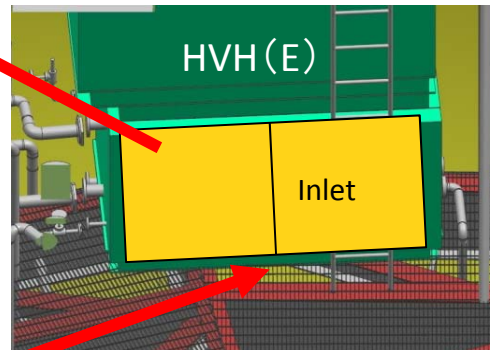
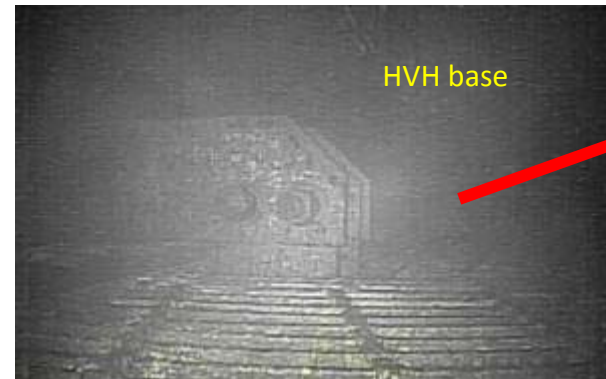
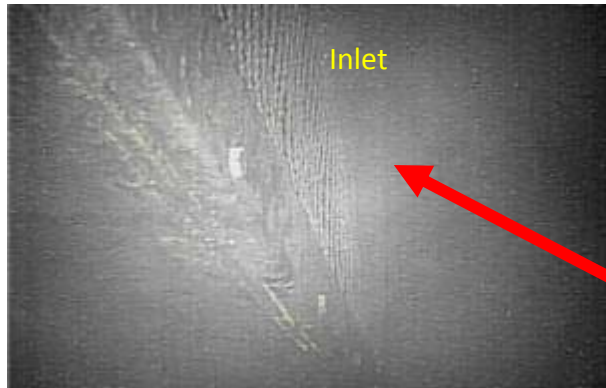
No significant damages were found on HVH (D).



* : Heating Ventilating Handling Unit.

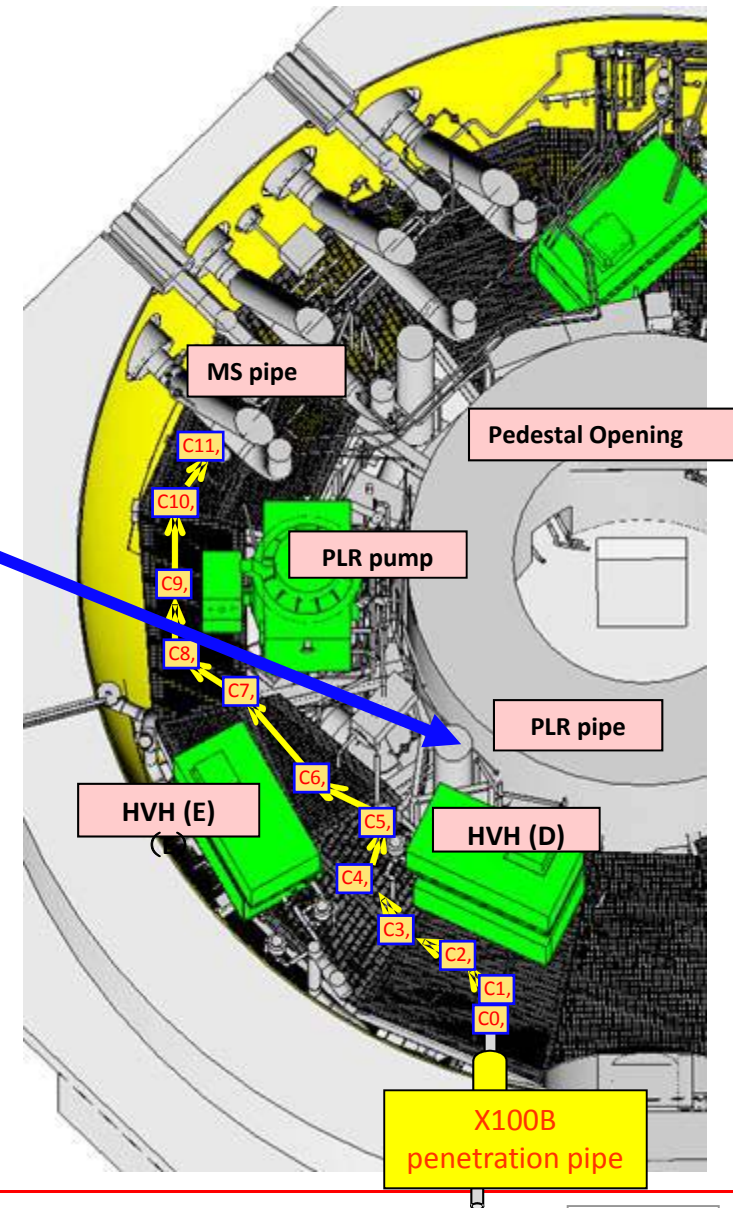
2-2. Images obtained along the clockwise route (HVH (E))

C6 No significant damages were found on HVH (E).



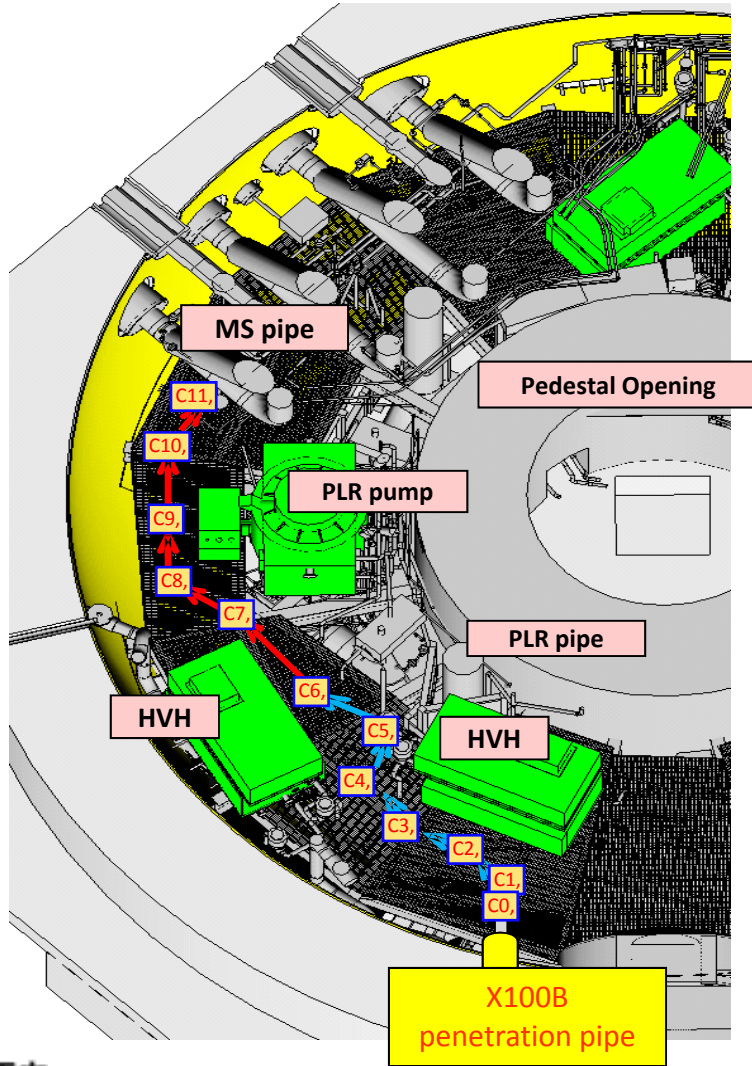
2-1. Images obtained along the clockwise route (PLR pipe)

C5



3. Investigation results on the clockwise route for April 15 (Temperature/ Dose rate)

Temperature and dose rate were measured at the following points.



| | Dose rate (Sv/h) | Temperature (°C) |
|----|------------------|------------------|
| C2 | 6.7 | 19.6 |
| C5 | 8.3 | 19.5 |
| C6 | 7.7 | 19.4 |

← : Route and points investigated on April 15, 2015

← : Route and points to be investigated on and after April 16, 2015