

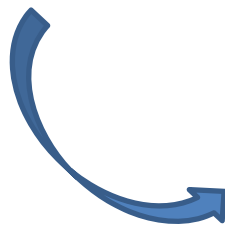
Transportation of the supporting part of a new roof for the Unit 3 fuel removal at Fukushima Daiichi Nuclear Power Station

Reference
December 20, 2016
Tokyo Electric Power Company Holdings, Inc.

On December 20, 2016, the supporting part of a new roof for the Unit 3 reactor building, known as a “stopper,” was transported by sea and loaded onto the Fukushima Daiichi site toward future fuel removal from the Unit 3 spent fuel pool.



Being transported by sea to Fukushima Daiichi site



Being lifted by a crane from a barge



Loaded onto the shallow draft quay



For reference: Overview of a new roof for Unit 3 fuel removal

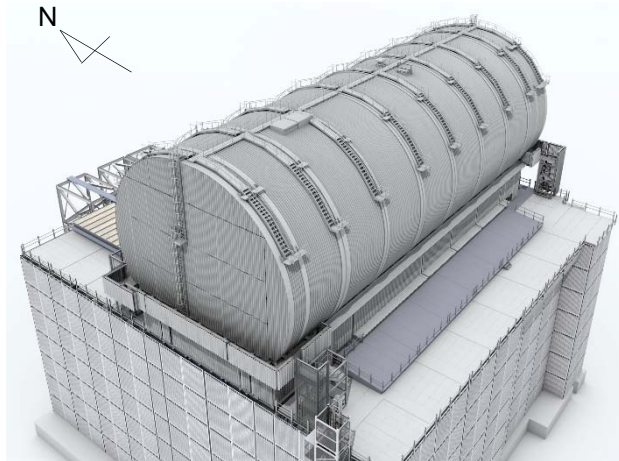
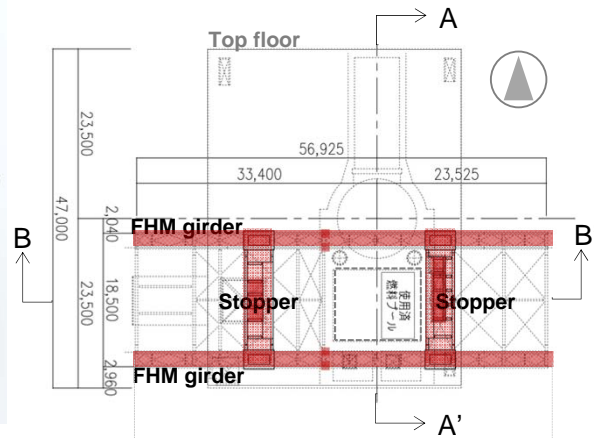
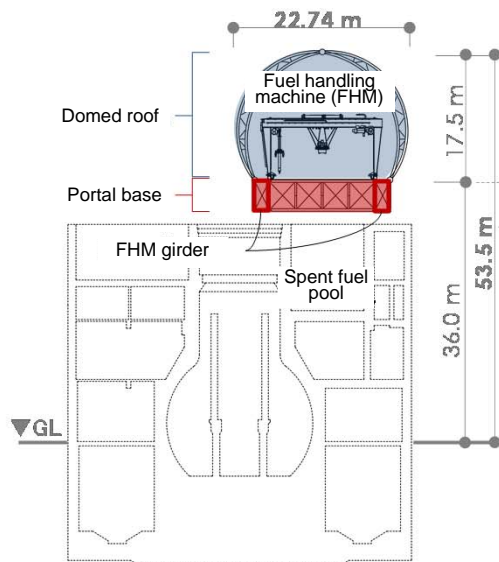


Image of a new roof for Unit 3 fuel removal

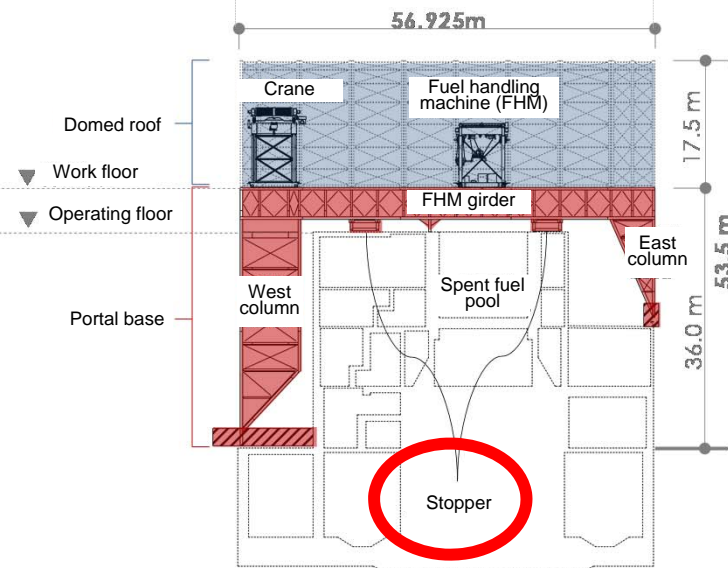


Beam plan

- A new roof for fuel removal is consisted of domed roof and portal base crossing the reactor building's top floor in the direction of east to west.
- A fuel handling machine (FHM) will be installed on the work floor laying on the FHM girder.



A-A' cross section



B-B' cross section

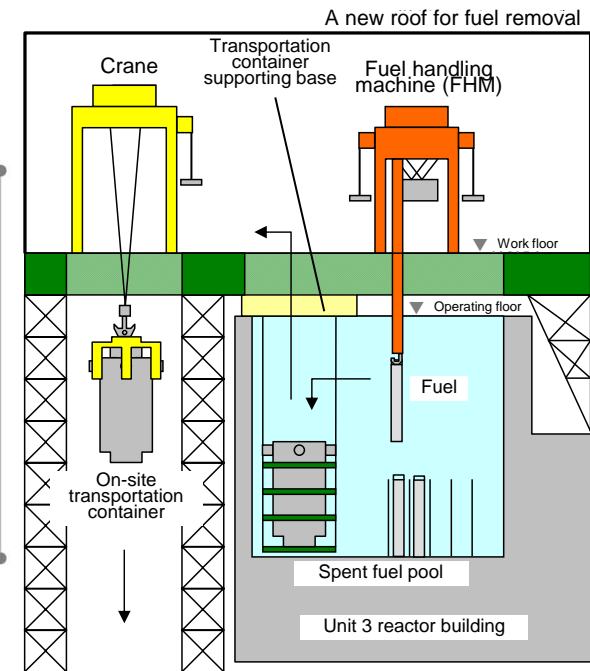


Image of Unit 3 fuel removal work