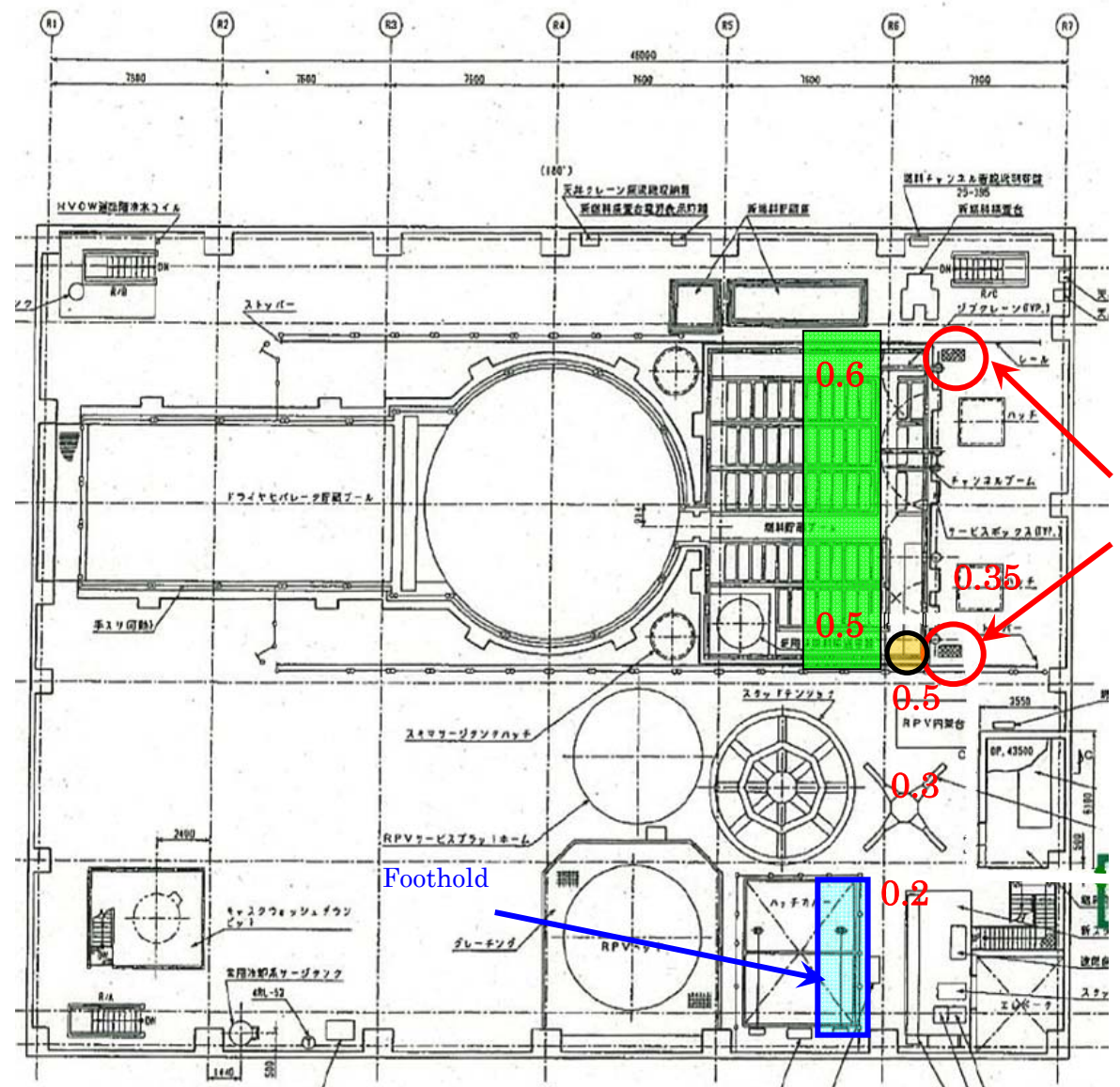
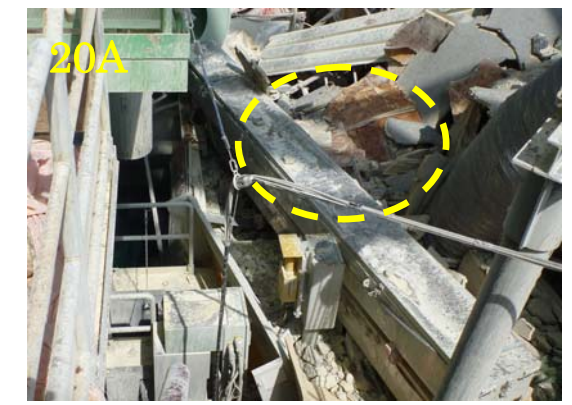
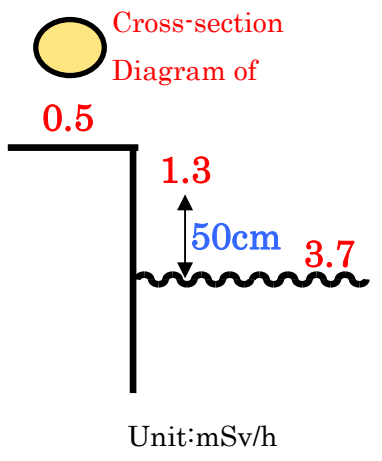


Results of Investigation on 5th Floor of the Reactor Building Unit 4 Tokyo Electric Power Company

Date and Time :	1:28pm~2:21pm, June 29, 2011
Workers :	TEPCO 2 employees Cooperative Firm 4 workers
Exposed Dose :	Maximum 0.31mSv Minimum 0.21mSv



Fuel Pool Cooling and Filtering System Valve 20A/B Under the hatch



Fuel Pool Cooling and Filtering System Valve



Equipment Storage Pool side to the Fuel Exchange Truck



Reactor Well



Spent Fuel Pool Gate