

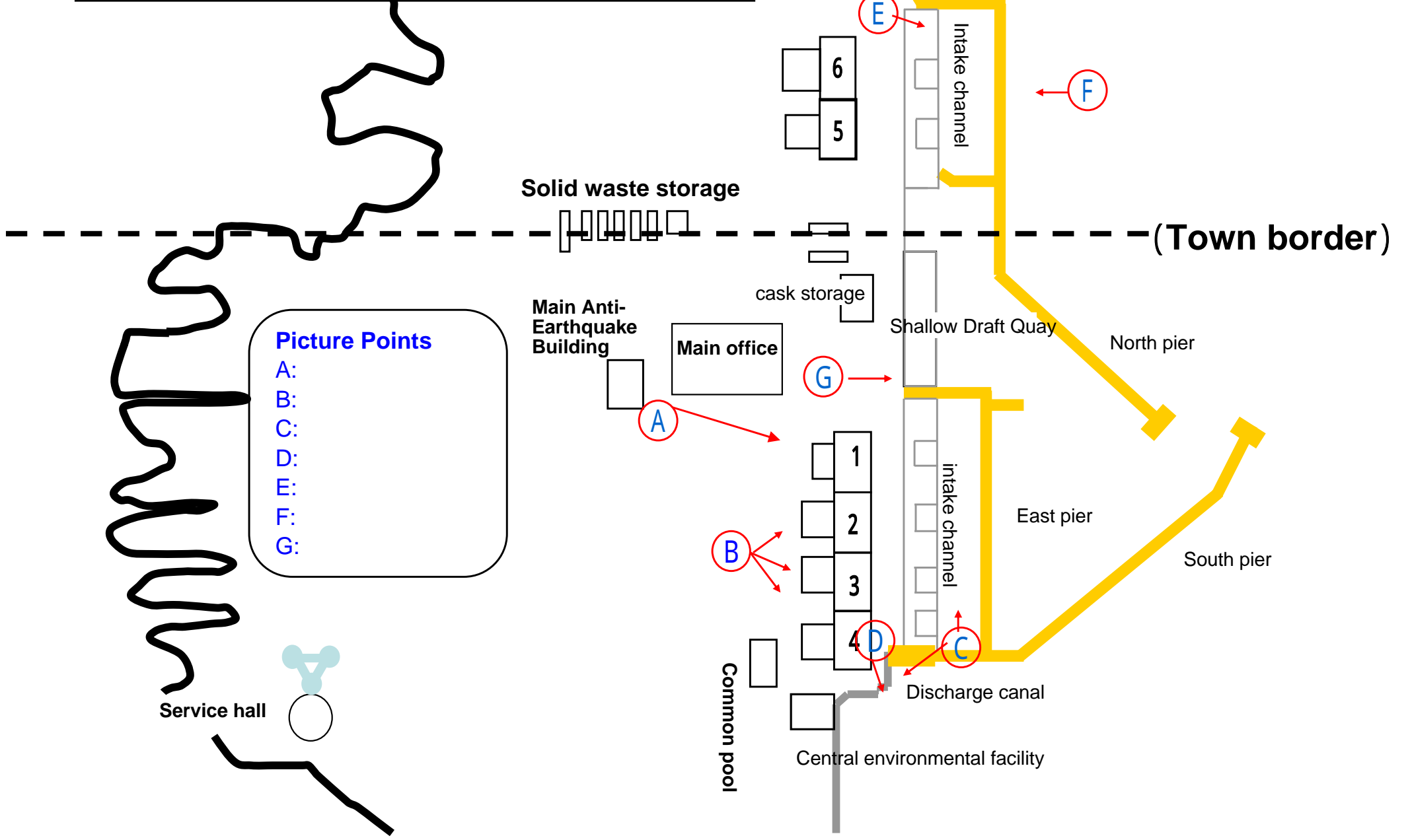
< Reference >

October 8,2011

Tokyo Electric Power Company

Fukushima Daiichi Nuclear Power  
Plant Photo Collection

# Location Map of Fukushima Daiichi Nuclear Power Plant



- Picture Points**
- A:
  - B:
  - C:
  - D:
  - E:
  - F:
  - G:



**Overview of reactor building of Unit 1  
–From south direction of Main Anti-Earthquake Building -  
October 8, 2011 by TEPCO employee**



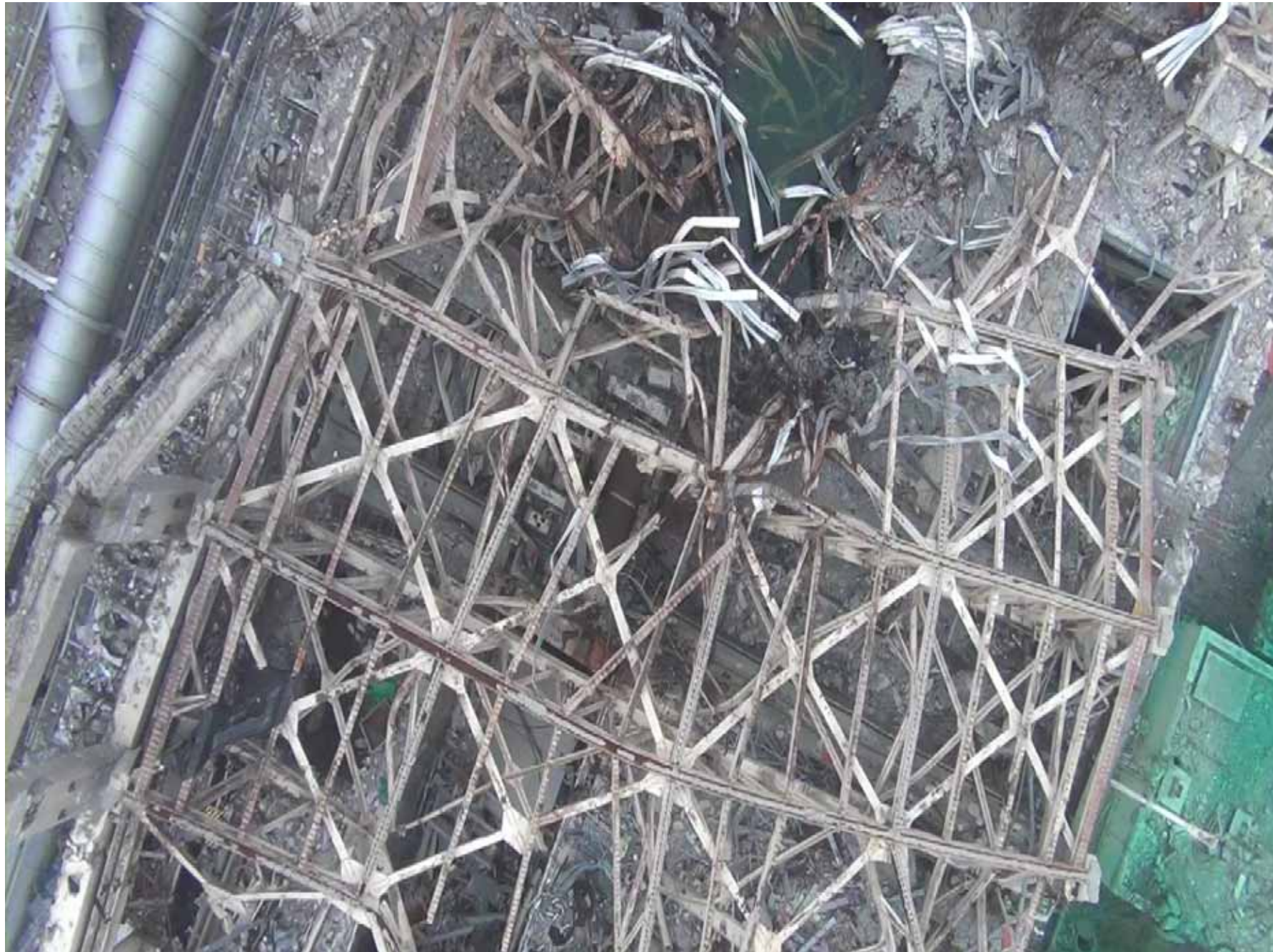
**Overview of reactor building of Unit 1 –From a crane above Unit 1-  
September 9, 2011 by Cooperating Company Employee**



**Overview of reactor building of Unit 2 -From western hilltop between Unit 2 and 3-  
September 29, 2011 by TEPCO employee**



**Overview of reactor building of Unit 3 -From western hilltop between Unit 2 and 3-  
September 29, 2011 by TEPCO employee**



**Overview of reactor building of Unit 3 -From a crane above Unit 3-  
September 24, 2011 by Cooperating Company Employee**



**Overview of a reactor building of Unit 4 -From western hilltop between Unit 2 and 3-  
September 29, 2011 by TEPCO employee**





**Main control room of Unit 1 and 2  
September 22, 2011 by TEPCO employee**



**Outside Monitoring Post Control Panel (Monitoring Post) -Main control room of Unit 1 and 2-  
September 22, 2011 by TEPCO employee**



**Silt protector -Around discharge canals of Unit 1-4-  
September 29, 2011 by TEPCO employee**



**Steel pipe sheet-pile -Around discharge canals of Unit 1-4-  
September 28, 2011 by Cooperating Company Employee**



**Breakwaters for Unit 5 and 6 (Under construction)  
June 8, 2011 by Cooperating Company Employee**



**Breakwaters for Unit 5 and 6  
September 29, 2011 by TEPCO employee**



**Breakwaters for Unit 5 and 6 (Complete)  
October 5, 2011 by Cooperating Company Employee**



**Breakwaters –From the shore-  
September 29, 2011 by TEPCO employee**





**Breakwaters -From the sea-  
September 29, 2011 by TEPCO employee**