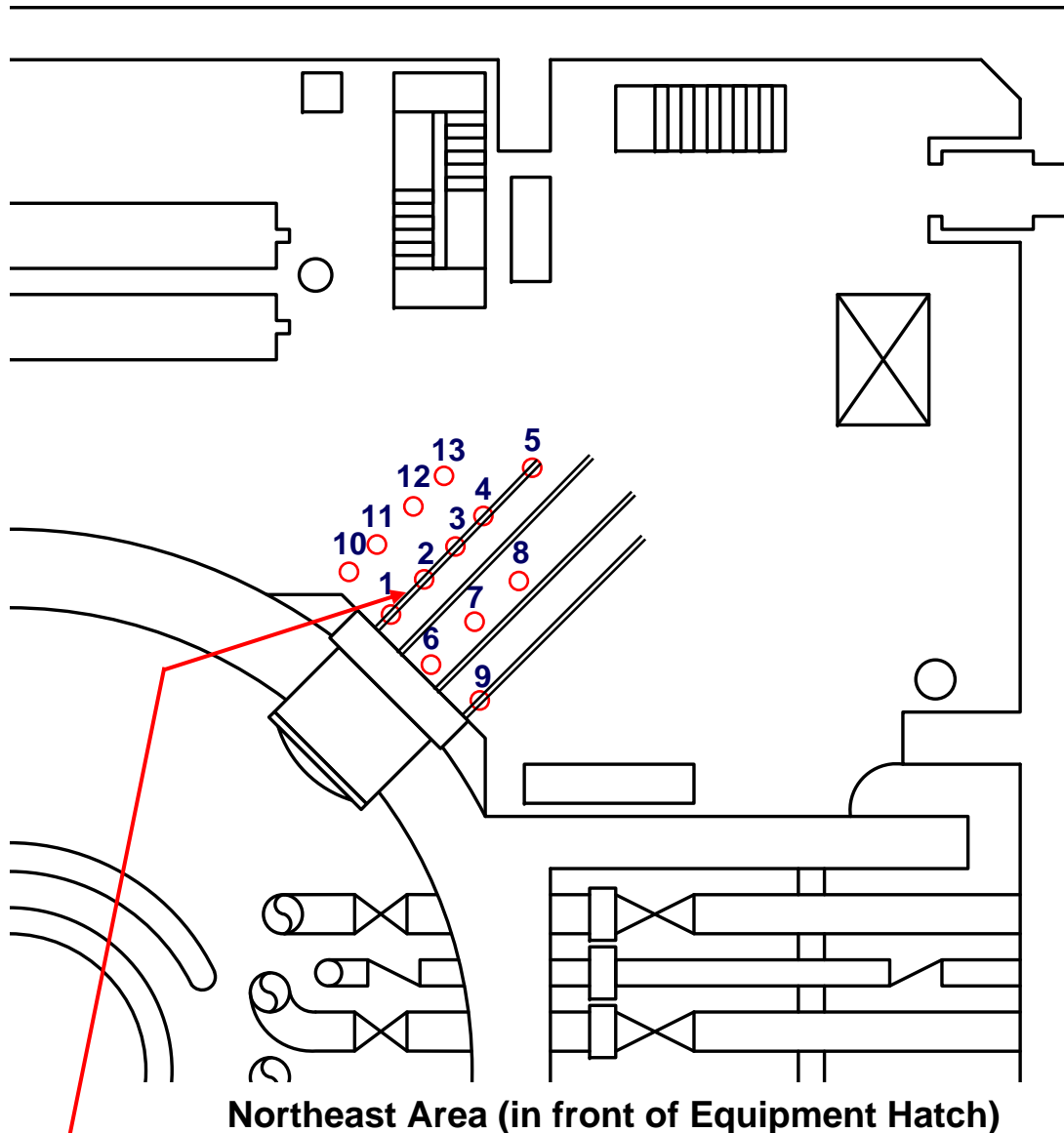


Airborne Radiation Dose Measured by Robot at 1st floor of Reactor Buildings of Unit 3 at Fukushima Daiichi Nuclear Power Station

November 16, 2011
Tokyo Electric Power Company



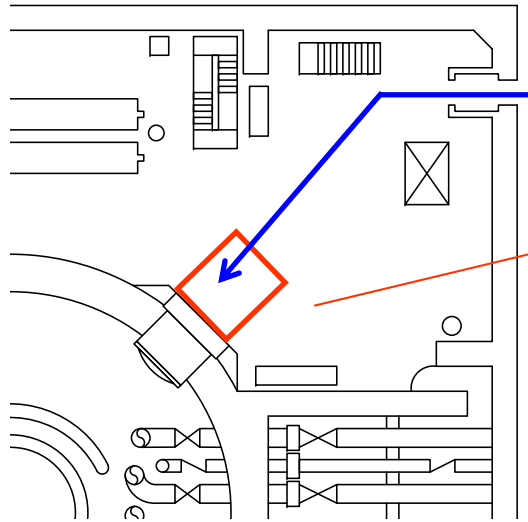
Approx. 1,300mSv/h detected near the surface of the northern grooved rail when whether the water exists in the rail or not was being checked.

Measurement points	Measurement Height [m]		
	0.4	1.2	1.7
1	870	370	255
2	800	415	290
3	750	420	280
4	650	410	270
5	380	200	130
6	180	190	180
7	170	190	180
8	145	180	180
9	120	105	105
10	180	200	200
11	180	220	210
12	190	210	205
13	170	190	185

Measurement results of airborne radiation [mSv/h]

Condition of floor in front of Equipment Hatch at Primary Containment Vessel

Entry Route of Robot



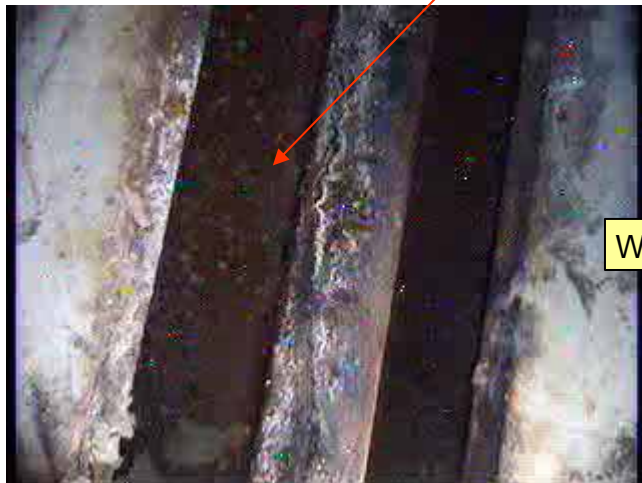
Area in front of Equipment Hatch



Floor is dry

Rail at Equipment Hatch

Surface is sludgy



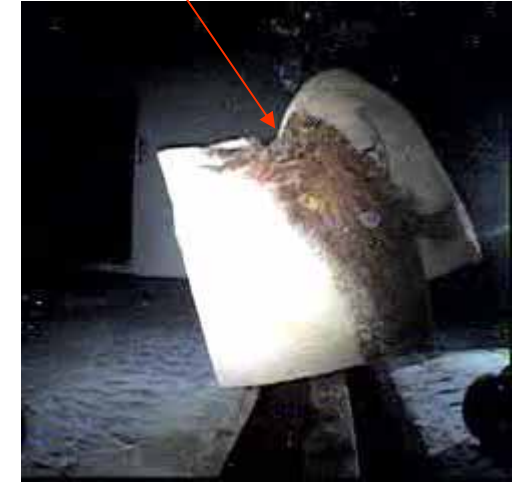
Grooved rail (before wiped off)

Exposed water surface



Grooved rail (after wiped off)

Got wet



Waste used for wipe

Wipe off