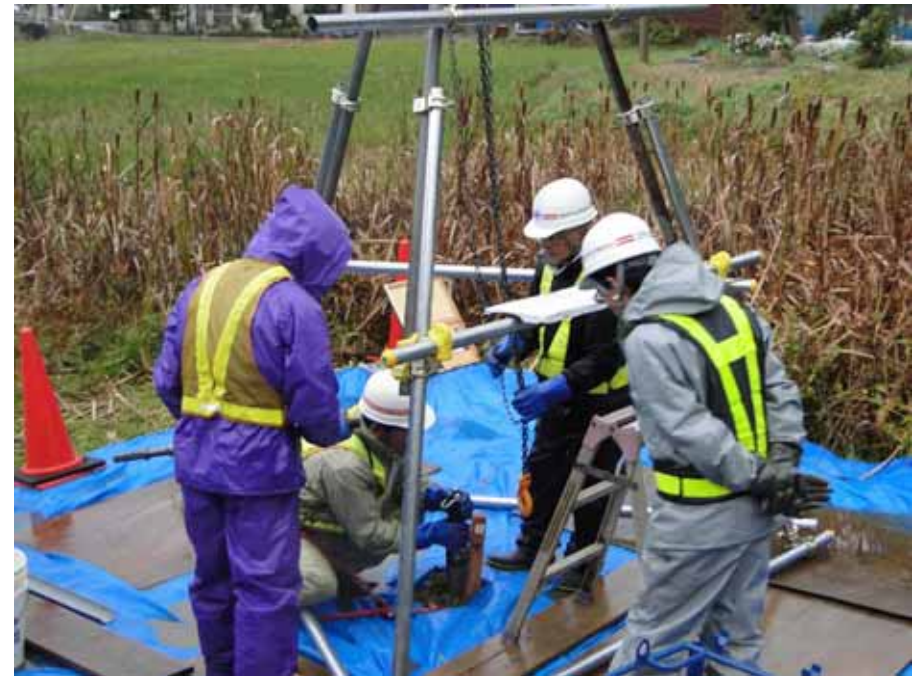


November 18, 2011

Tokyo Electric Power Company, Inc.

**Current Status of Tsunami Sediments Study  
Around the Coast of Kashiwazaki Kariwa Nuclear Power Station  
The First Day of Investigation (November 15, 2011)  
Investigation in Miyagawa, Kashiwazaki**



Sampling by boring

Photographer: Tokyo Electric Power Company